

ODC Daily Coaling Plan

14/08/2025

Geologist Contact: 0473 223 132

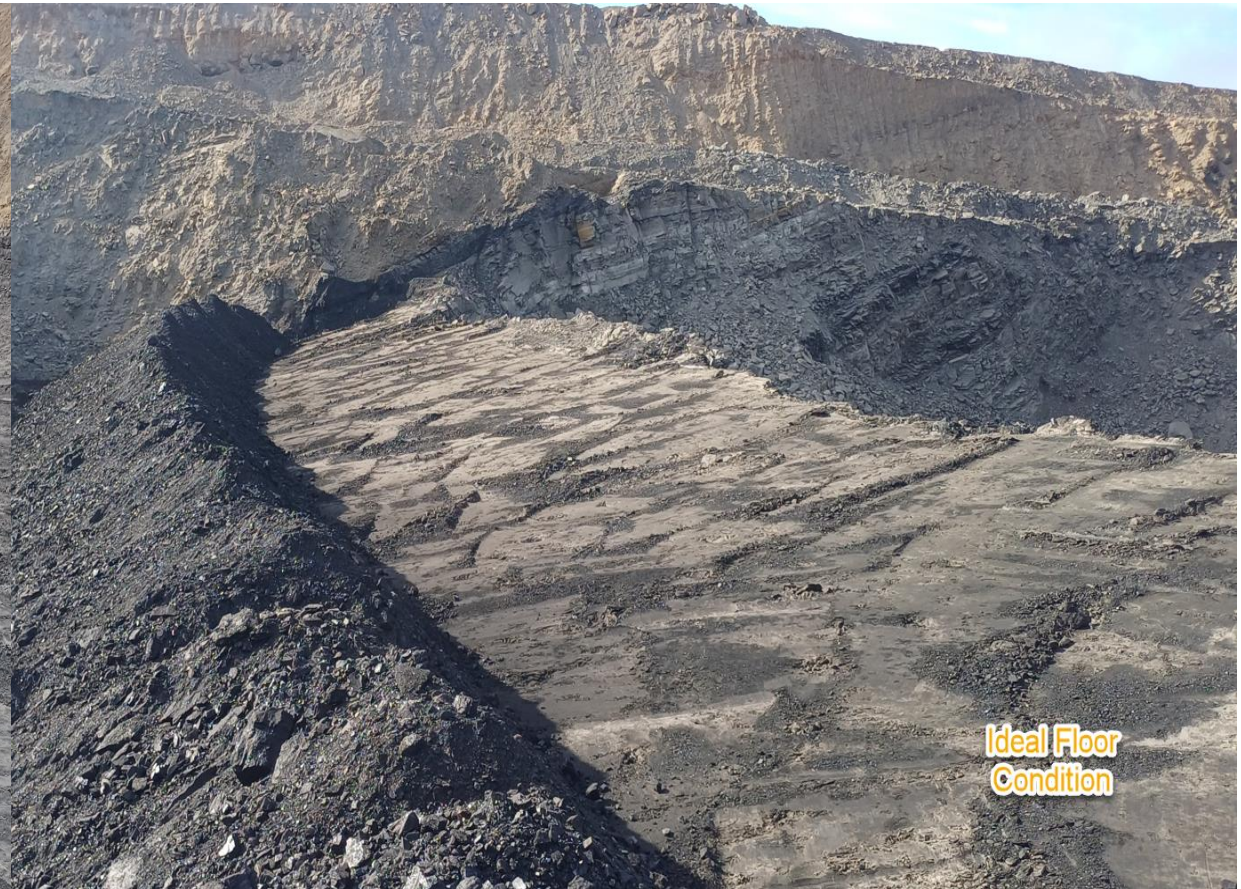


Coal Locations

Location	Coal Type	Destination	Comments
T02	C_VU1_VU3	SP_C	
T03	C_VU1_VU3		
	C_LL1	SP_B	Thin seam – take care when mining Tip Stockpile South to North
	C_LL2T_LL2B	SP_G	
	C_LL3B	SP_M	Thin seam – take care when mining.
T04	C_LL1	SP_B	Thin seam – take care when mining
	C_LL2T_LL2B	SP_P	
	C_LL3B	SP_Q	
	C_VU1_VU3	SP_O	
T05	C_LL1	SP_B	Thin seam – take care when mining
	C_LL2T_LL2B	SP_D	
	C_LL3B	SP-R	Thin seam – take care when mining
	C_VU1_VU3	SP_A	

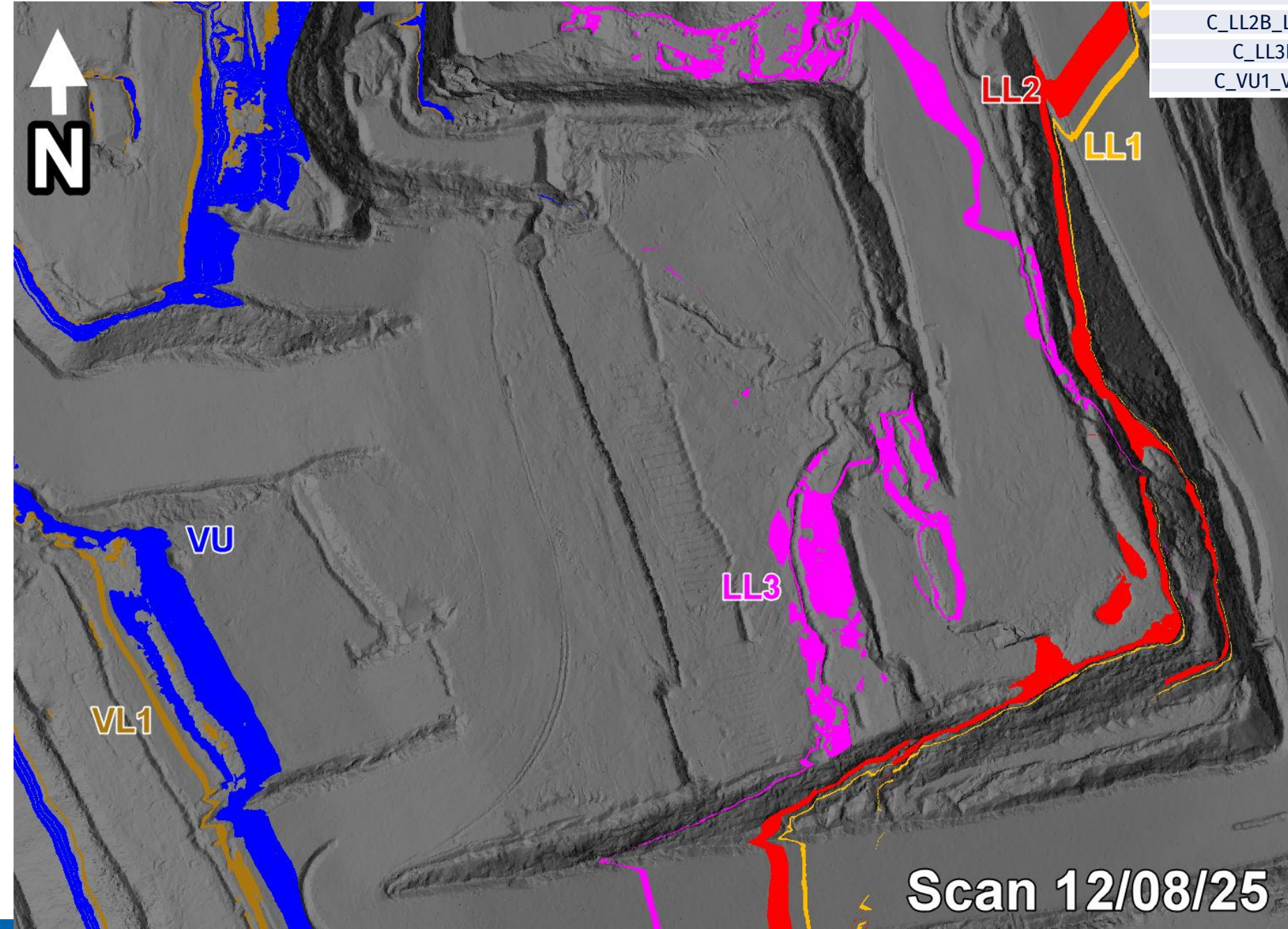
All VL1 to go
to the VL Pad

Ideal Roof and Floor Conditions



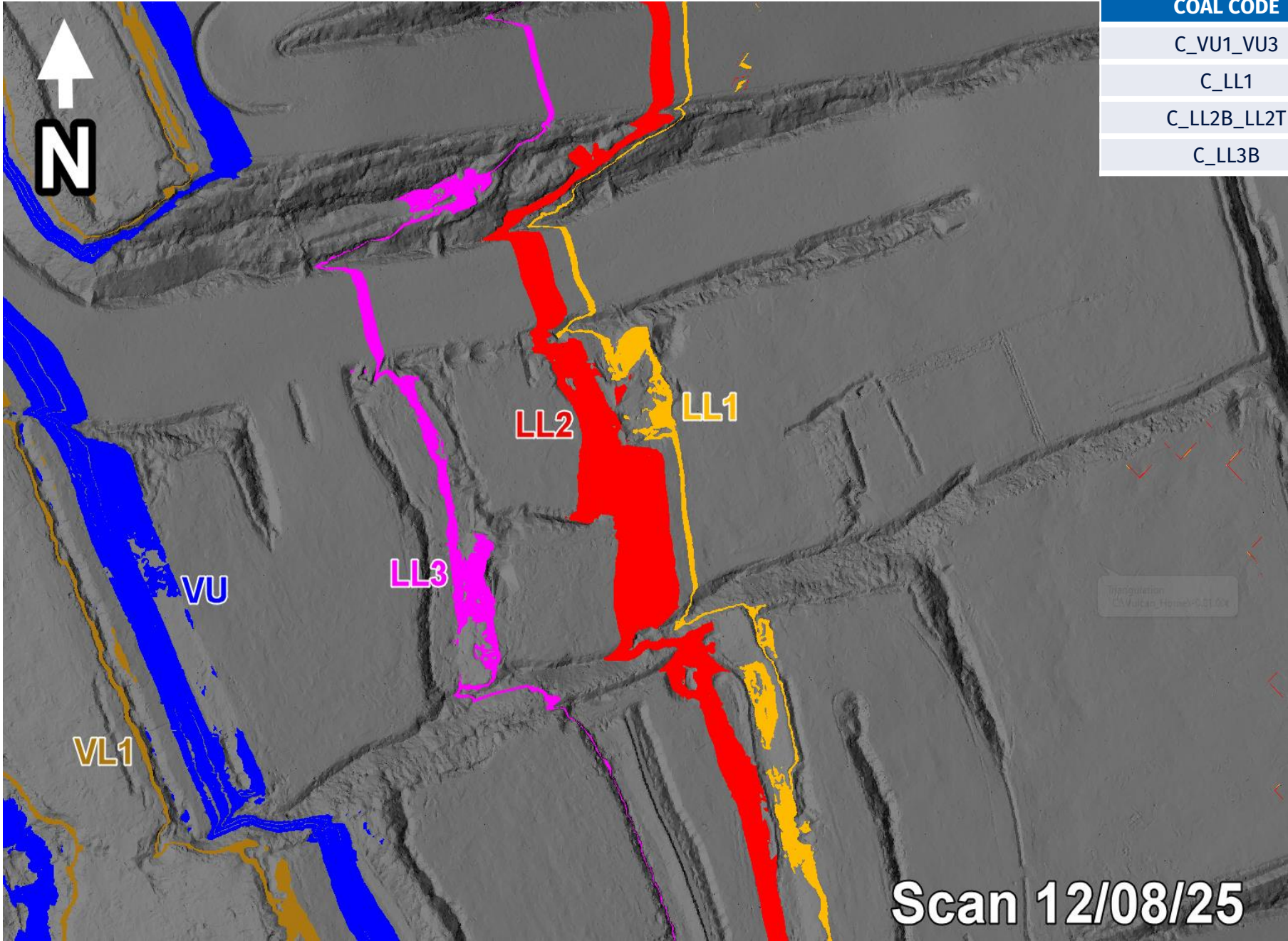
T03/S02

COAL CODE	STOCKPILE	COMMENTS
C_LL1	SP_B	Thin seam – take care when mining
C_LL2B_LL2T	SP_G	
C_LL3B	SP_M	Separated to OX Coal
C_VU1_VU3		



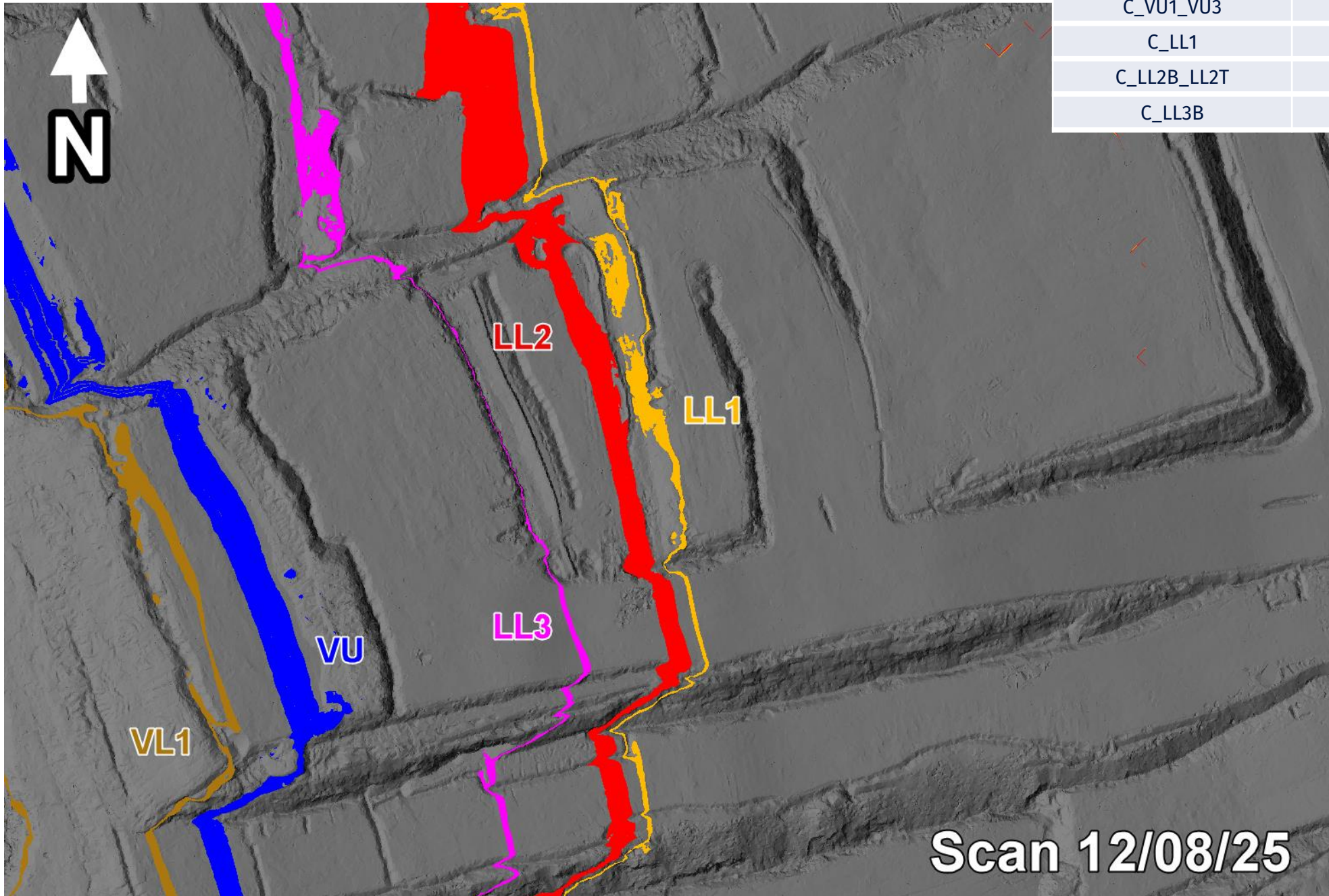
THIESS

T04/S01 Ramp 5 De-Stack



T04/S01

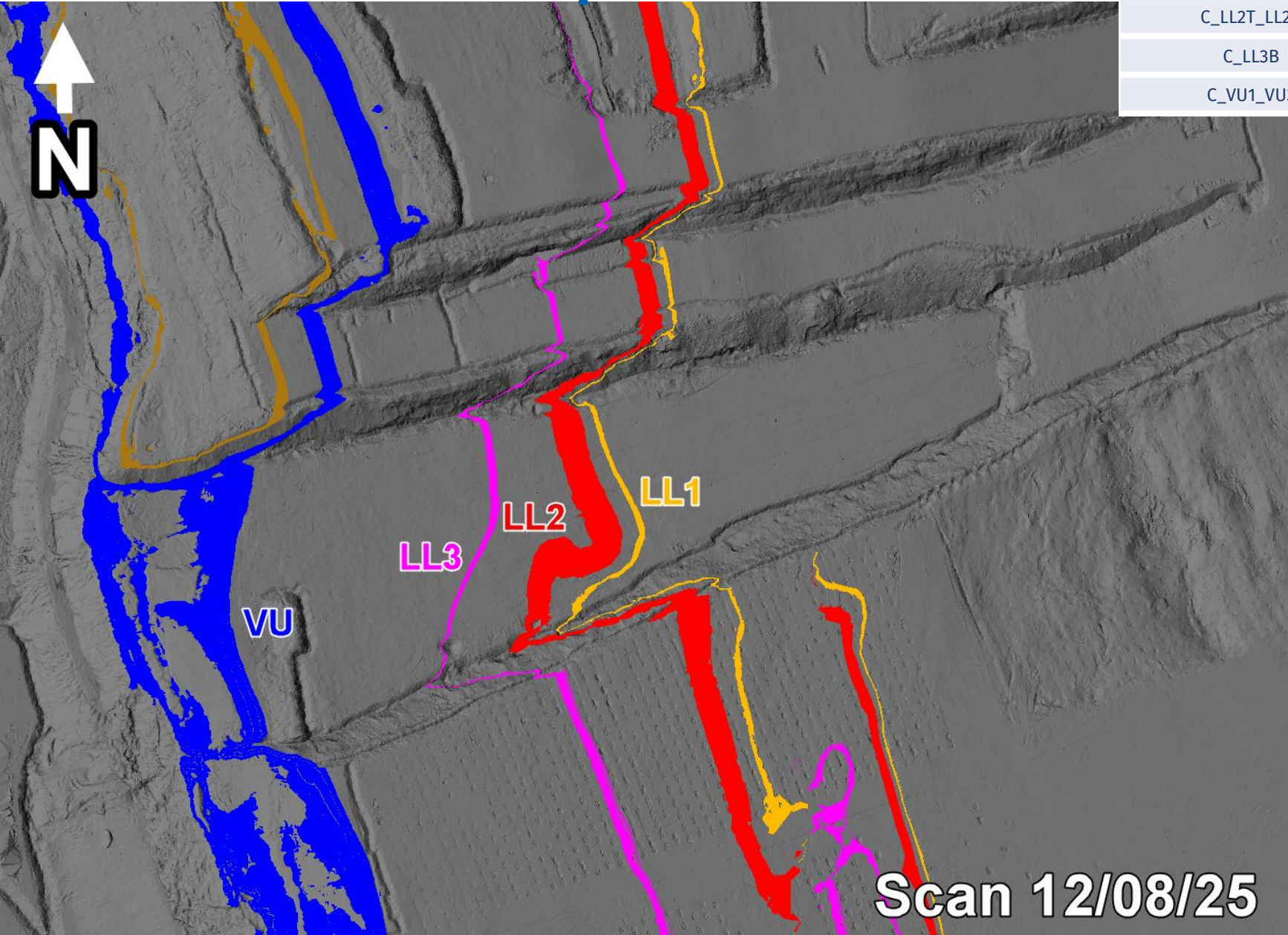
COAL CODE	STOCKPILE	COMMENTS
C_VU1_VU3	SP_O	
C_LL1	SP_B	Thin seam – take care when mining
C_LL2B_LL2T	SP_P	
C_LL3B	SP_M	Keep a gap between existing OX coal please



Scan 12/08/25

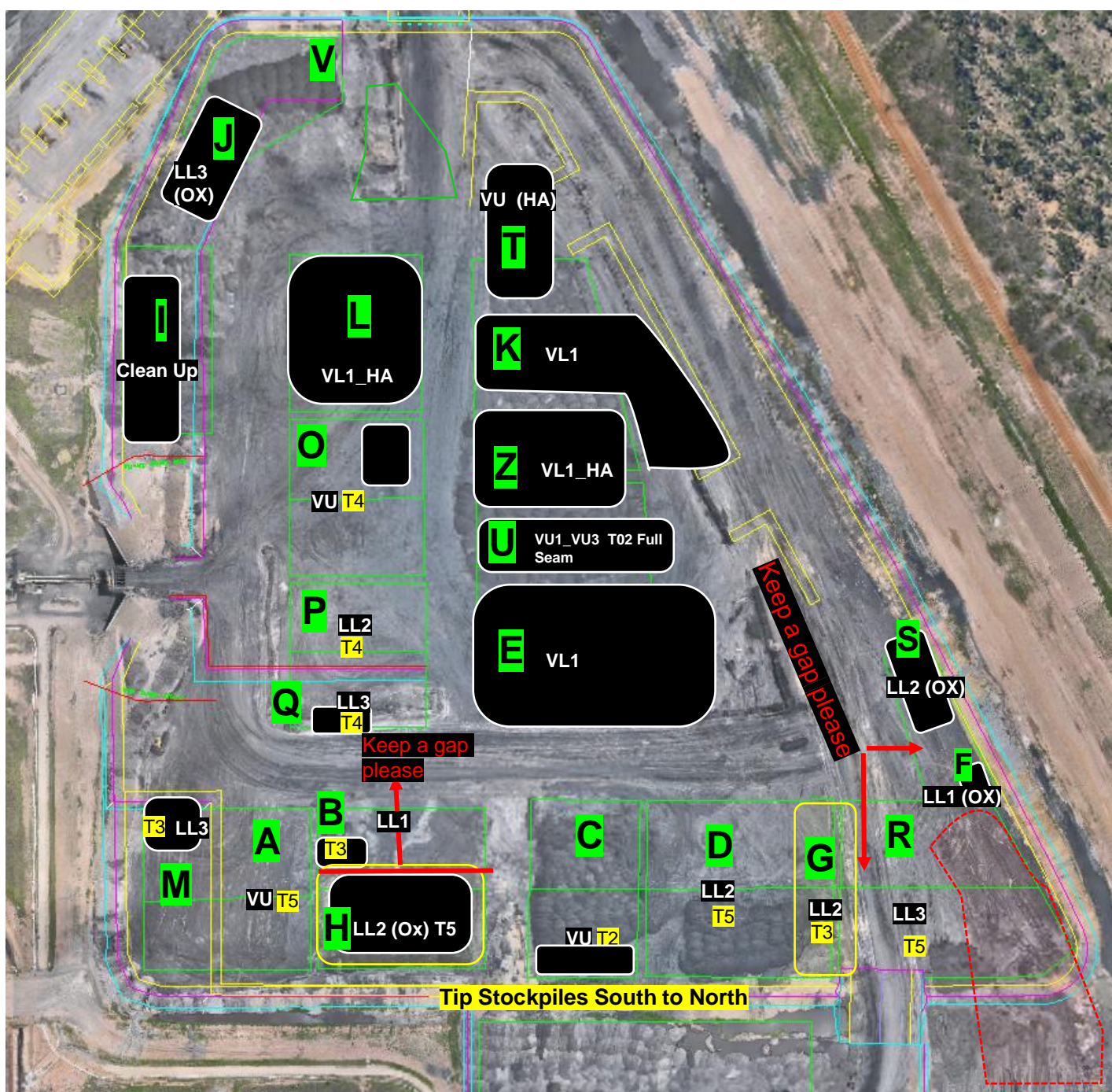
THIESS

T05/S01 Ramp 6 De-Stack



COAL CODE	STOCKPILE	COMMENTS
C_LL1	SP_B	Thin seam – take care when mining
C_LL2T_LL2B	SP_D	
C_LL3B	SP_R	Eastern Side
C_VU1_VU3	SP_A	

ROM



Communicate any direct feed start and finish time to CHPP control.

Notes:

Currently on Blend 4

Once Blend 4 exhausted change to Blend 1

	Blends							
	Feed 1	Feed 2	Feed 3	Ratio	ROM Loaders	ROM Trucks	Direct Feed	Comments
Blend 1	SP-T	SP-H		1:1	1	2	No	1 x VU FA : 1 x LL2 (Ox T05S01)
Blend 2	SP-T	SP-H	SP-M	1:1:1	1	2	No	1 x VU FA : 1 x LL2 (Ox T05S01) : 1 x LL3 (T03S02)
Blend 3	SP-T	SP-H	SP-Q	1:1:1	1	2	No	1 x VU FA : 1 x LL2 (Ox T05S01) : 1 x LL3 (T04S01)
Blend 4	SP-B	SP-I		1:1	1	1	No	1 x LL1 (T03S01) : 1 x CC
Blend 5								
Blend 6								
Wet weather								

[illegible]

