

ODC Daily Coaling Plan

16/08/2025

Geologist Contact: 0473 223 132



Coal Locations

Location	Coal Type	Destination	Comments
T02	C_VU1_VU3	SP_C	
T03	C_VU1_VU3	SP_G	
	C_LL1	SP_B	Thin seam – take care when mining Tip Stockpile South to North
	C_LL2T_LL2B		
	C_LL3B	SP_M	Thin seam – take care when mining.
T04	C_LL1	SP_B	Thin seam – take care when mining
	C_LL2T_LL2B	SP_P	
	C_LL3B	SP_Q	
	C_VU1_VU3	SP_O	
T05	C_LL1	SP_B	Thin seam – take care when mining
	C_LL2T_LL2B	SP_D	
	C_LL3B	SP-R	Thin seam – take care when mining
	C_VU1_VU3	SP_A	

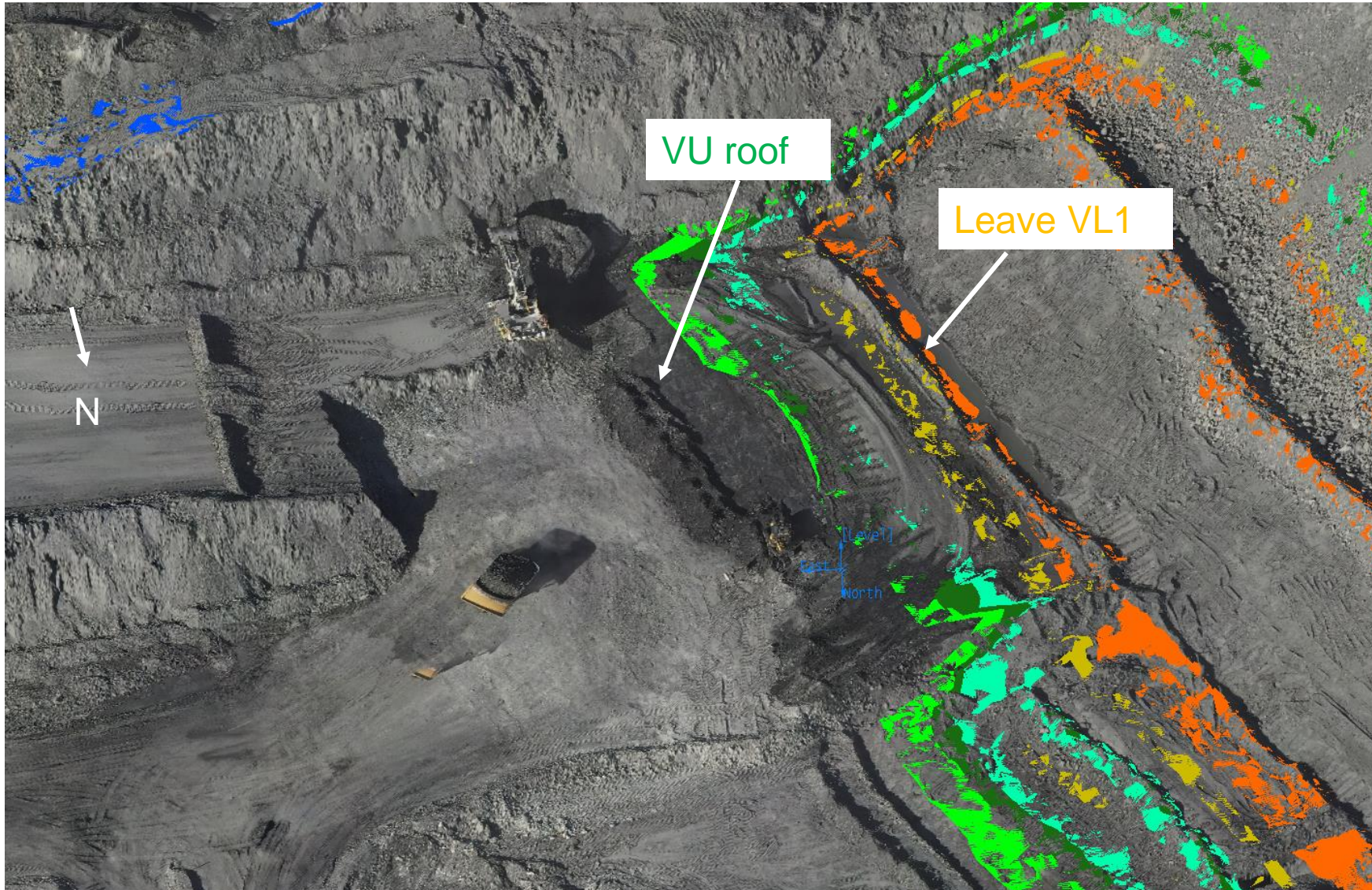
All VL1 to go
to the VL Pad

Ideal Roof and Floor Conditions



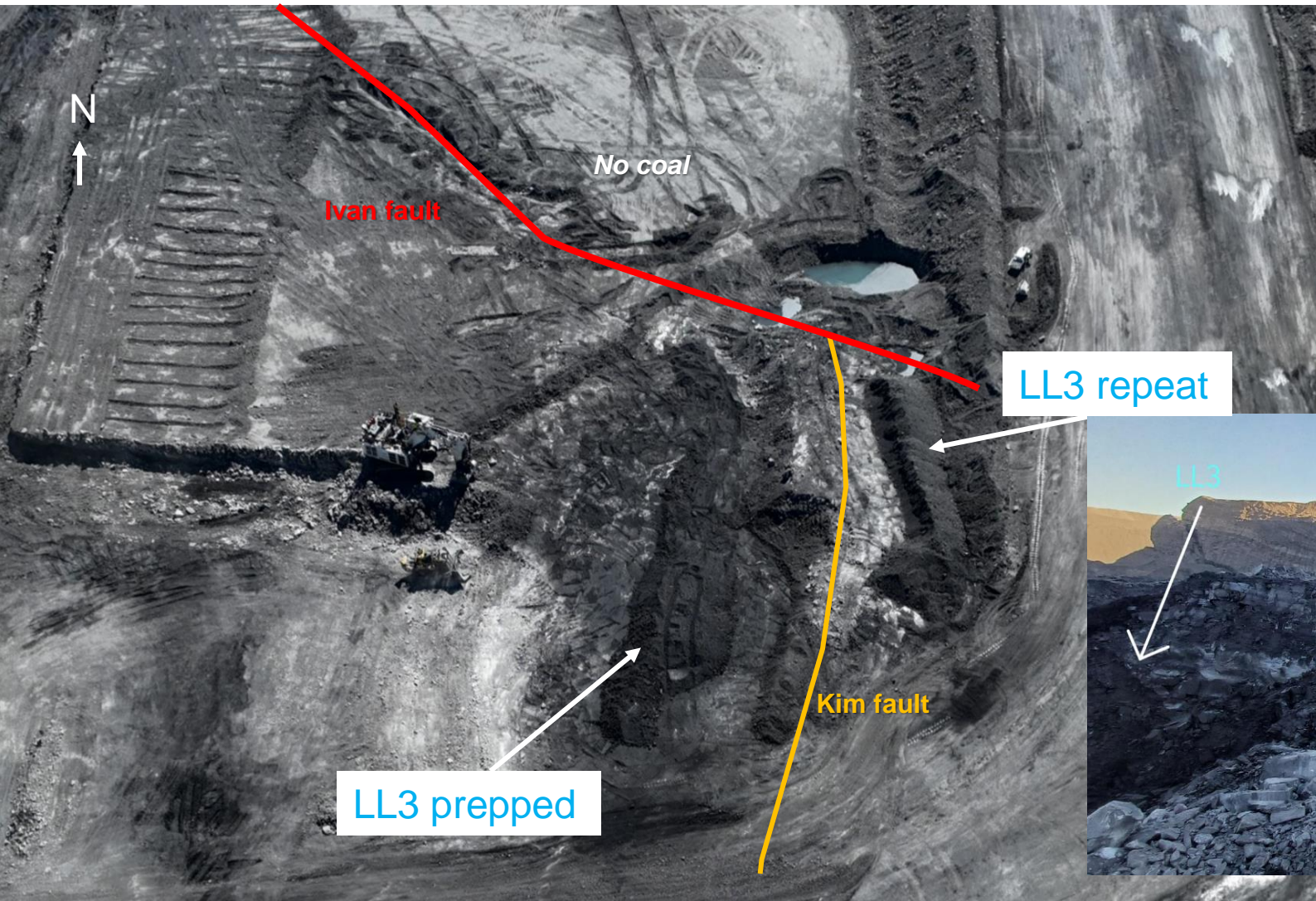
T03/S01

COAL CODE	STOCKPILE	COMMENTS
C_LL1	SP_B	Thin seam – take care when mining
C_LL2B_LL2T		
C_LL3B	SP_M	Separated to OX Coal
C_VU1_VU3	SP_G	

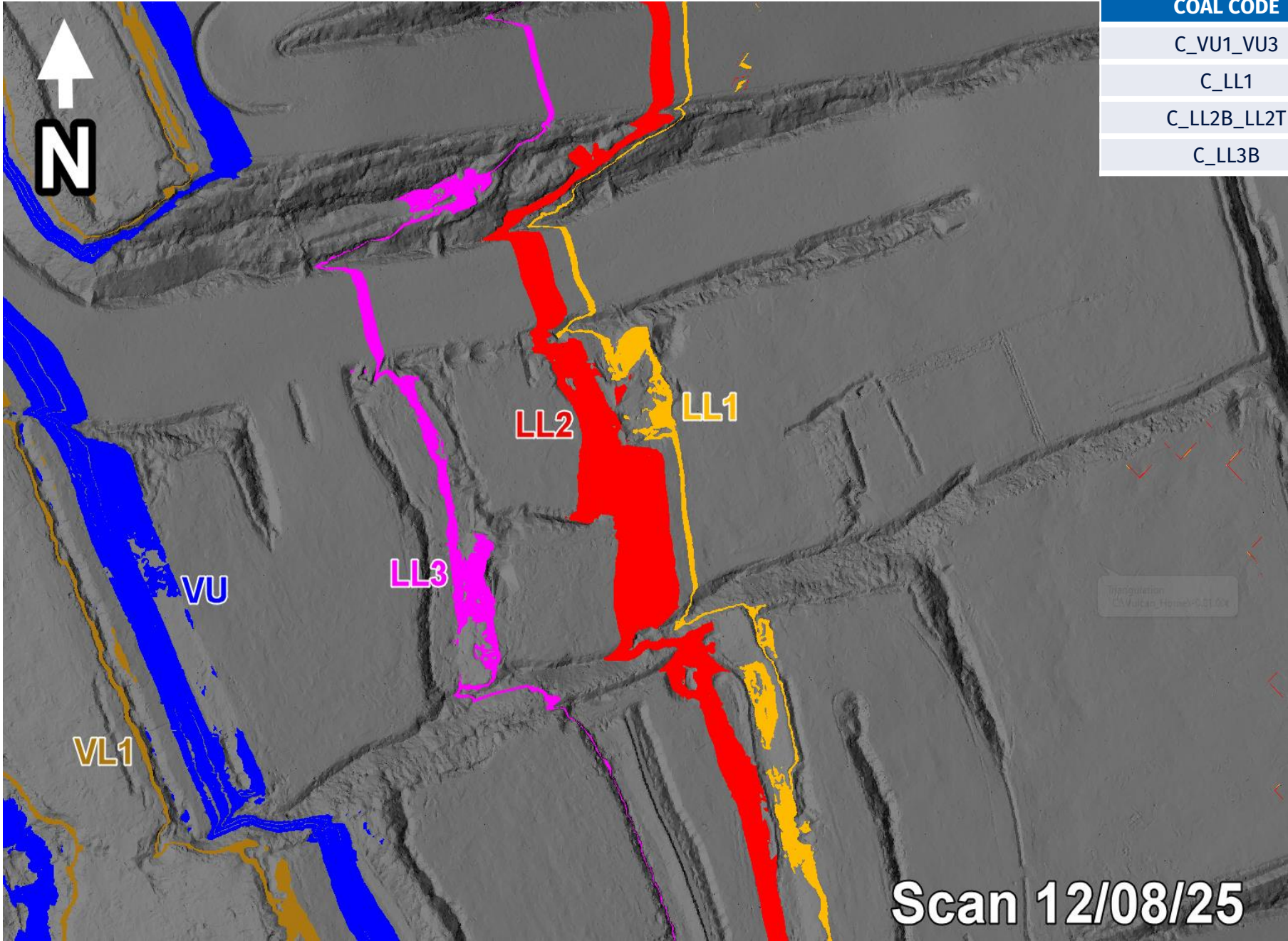


T03/S02

COAL CODE	STOCKPILE	COMMENTS
C_LL1	SP_B	Thin seam – take care when mining
C_LL2B_LL2T		
C_LL3B	SP_M	Separated to OX Coal
C_VU1_VU3	SP_G	



T04/S01 Ramp 5 De-Stack



COAL CODE	STOCKPILE	COMMENTS
C_VU1_VU3	SP_O	
C_LL1	SP_B	Thin seam – take care when mining
C_LL2B_LL2T	SP_P	
C_LL3B	SP_Q	

T04/S01

COAL CODE	STOCKPILE	COMMENTS
C_VU1_VU3	SP_O	
C_LL1	SP_B	Thin seam – take care when mining
C_LL2B_LL2T	SP_P	
C_LL3B	SP_M	Keep a gap between existing OX coal please



Mine VL1
to VL Pad

VU

LL2

LL1

LL3

VL1

Scan 12/08/25

THIESS

COAL CODE	STOCKPILE	COMMENTS
C_VU1_VU3	SP_O	
C_LL1	SP_B	Thin seam – take care when mining
C_LL2B_LL2T	SP_P	
C_LL3B	SP_M	Keep a gap between existing OX coal please

Mine VL1 to VL Pad

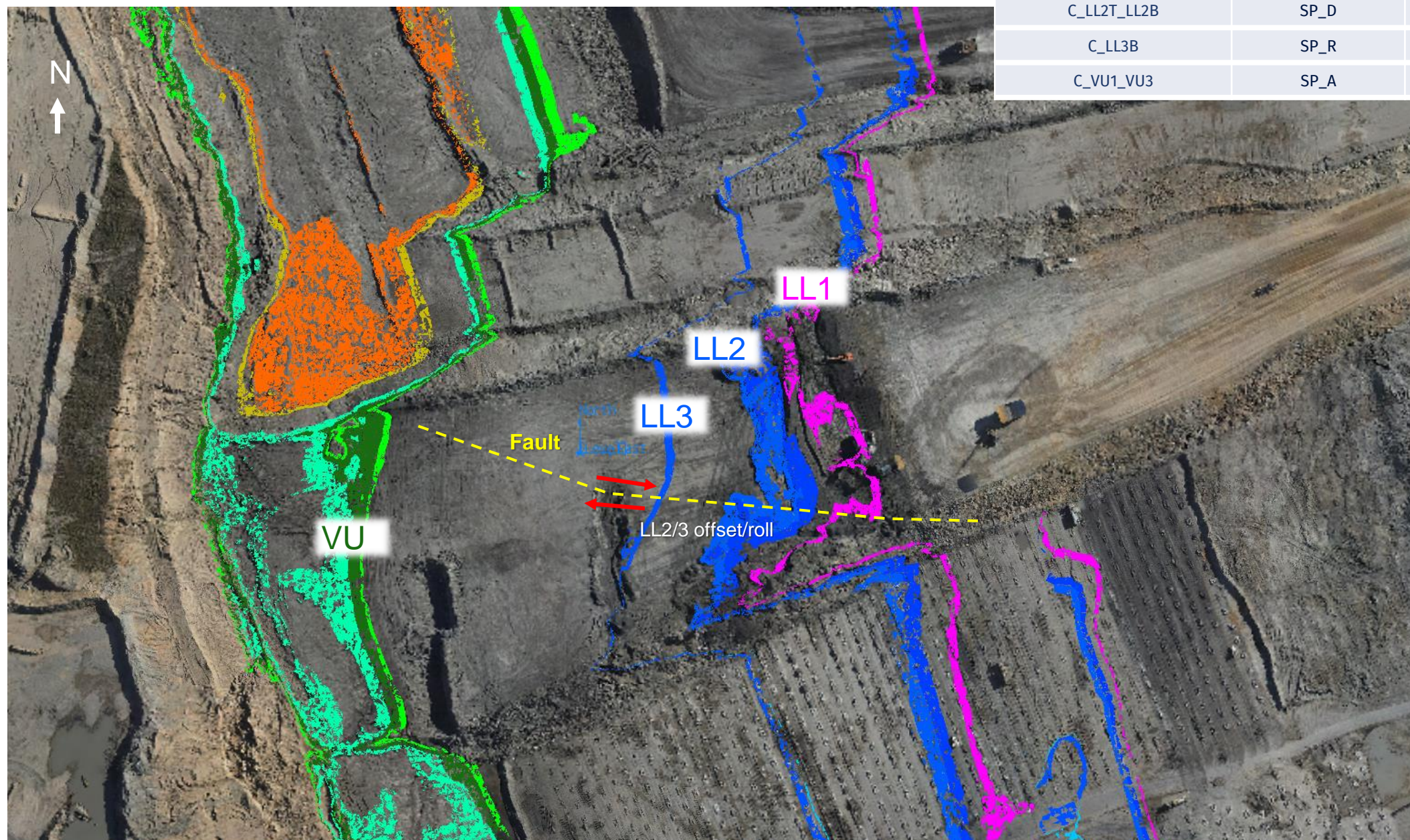
VL1 being marked up

VU remaining

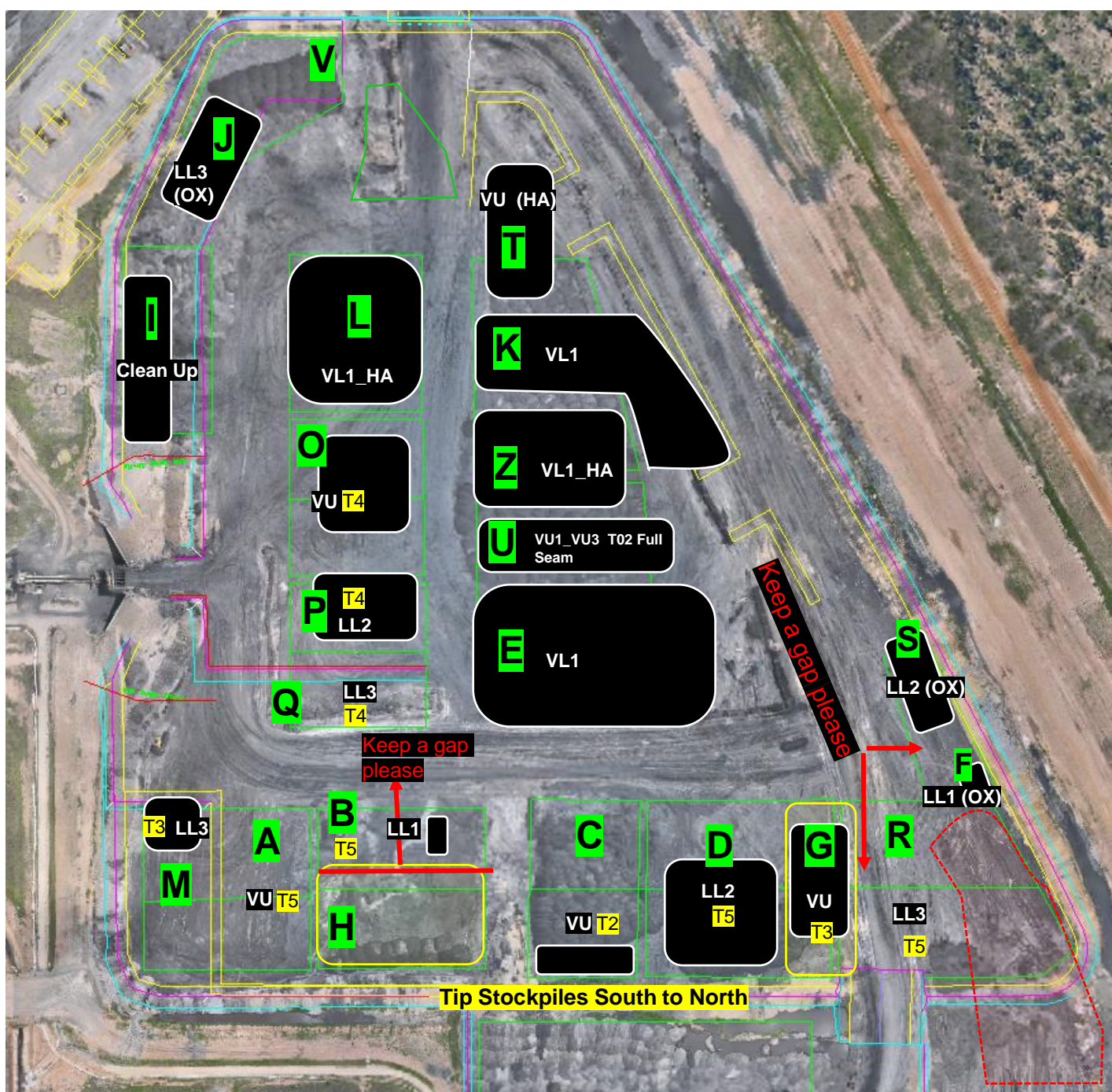


T05/S01 Ramp 6 De-Stack

COAL CODE	STOCKPILE	COMMENTS
C_LL1	SP_B	Thin seam – take care when mining
C_LL2T_LL2B	SP_D	
C_LL3B	SP_R	Eastern Side
C_VU1_VU3	SP_A	



ROM



Communicate any direct feed start and finish time to CHPP control.

Notes:

Currently on Blend 1

If can't maintain target yield on Blend 6 change to Blend 1

	Blends							
	Feed 1	Feed 2	Feed 3	Ratio	ROM Loaders	ROM Trucks	Direct Feed	Comments
Blend 1	SP-T	SP-P		1:1	1	2	No	1 x VU FA : 1 x LL2 (T04S01)
Blend 2								
Blend 3								
Blend 4								
Blend 5	SP-G	SP-D		1:1	1	2	No	1 x VU (T03S01) : 1 x LL2 (T05S02)
Blend 6	SP-T	SP-P	SP-E	1:1:1	1	2	No	1 x VU FA : 1 x LL2 (T04S01) : 1 xVL
Wet weather								

[illegible]

