

ODC Daily Coaling Plan

27/08/2025

Geologist Contact: 0473 223 132



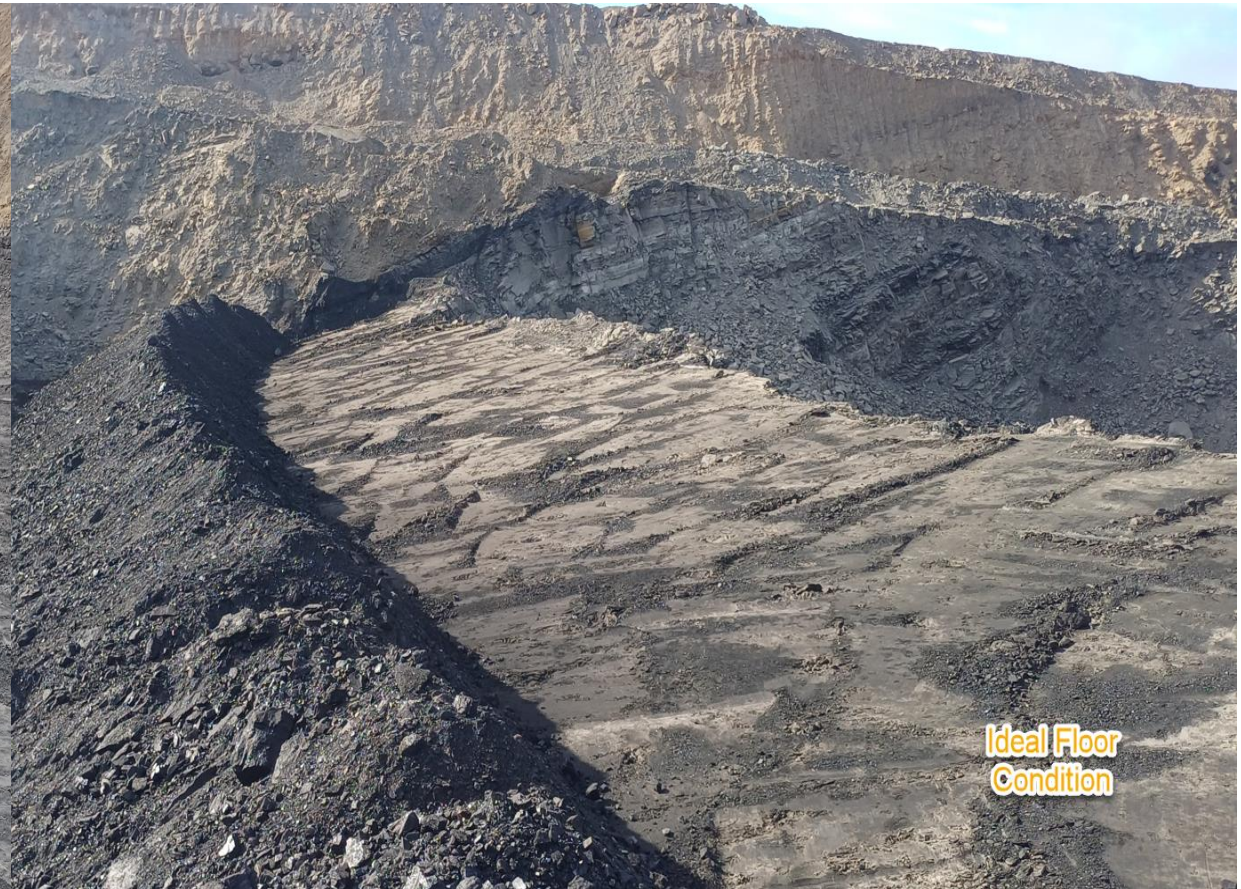
Coal Locations

| Location | Coal Type | Destination | Comments |
|----------|-------------|-------------|---|
| T03 | C_VU1_VU3 | SP_N | |
| | C_LL1 | SP_B | Thin seam – take care when mining Tip Stockpile South to North |
| | C_LL2T_LL2B | | |
| | C_LL3B | SP_M | Thin seam – take care when mining. |
| T04 | C_LL1 | SP_B (west) | Thin seam – take care when mining |
| | C_LL2T_LL2B | SP_P | |
| | C_LL3B | SP_Q | |
| | C_VU1_VU3 | SP_O | |
| T05 | C_LL1 | SP_B (east) | Thin seam – take care when mining |
| | C_LL2T_LL2B | SP_D | |
| | C_LL3B | SP-R | Thin seam – take care when mining |
| | C_VU1_VU3 | SP_A | |

NON-
Trial
VL1 to
VL_PAD

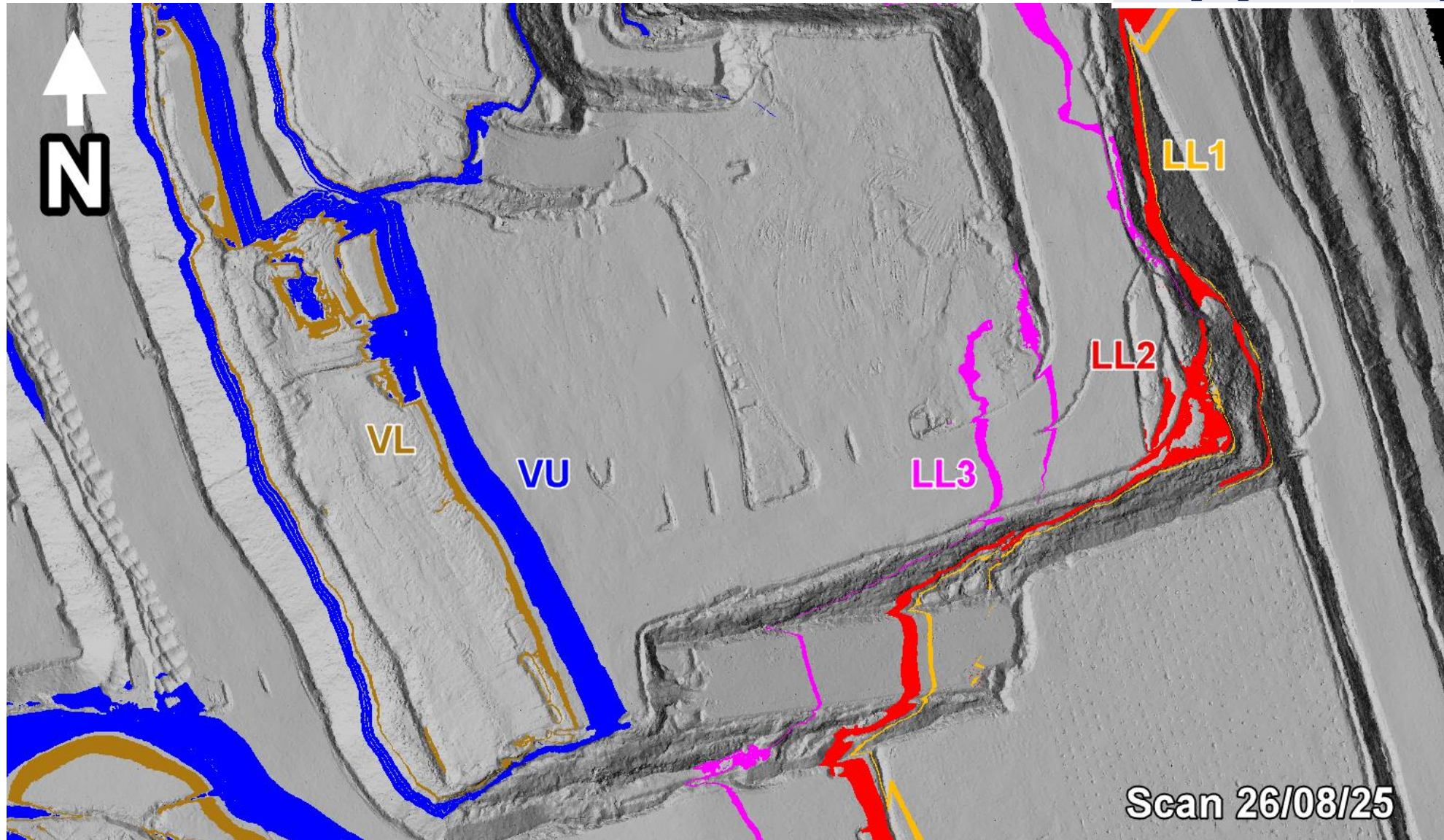
| Location | Coal Type | Destination | Comments |
|----------------|-------------|-------------|---|
| T03 – VL Trial | C_VL11_VL12 | VL_Pad | North-Eastern Section (Separate from other VL) |
| | C_VL13 | SP_T | Southern End |
| | C_VL15 | SP_T2 | Northern End |

Ideal Roof and Floor Conditions



T03 - Overview

| COAL CODE | STOCKPILE | COMMENTS |
|-------------|-----------|-----------------------------------|
| C_LL1 | SP_B | Thin seam – take care when mining |
| C_LL2B_LL2T | | |
| C_LL3B | SP_M | |
| C_VU1_VU3 | SP_G | SP_N overflow |



T03/S01



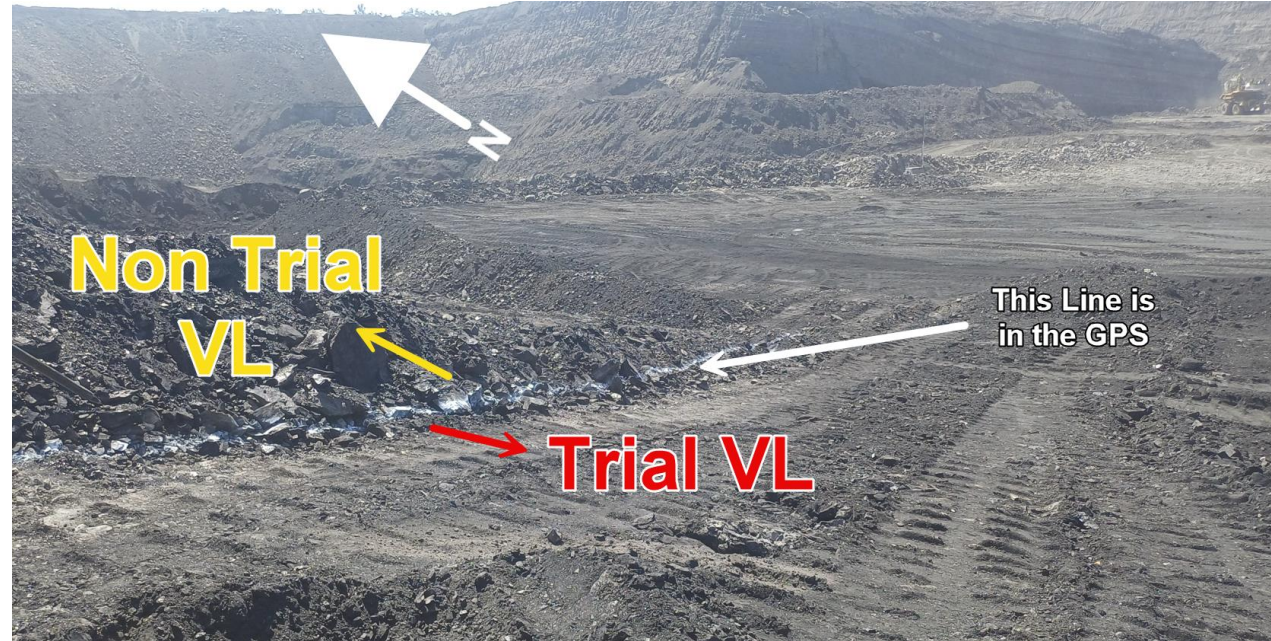
**Please liaise
with
Geology
prior to
starting in
morning**

T04S01 Ramp 5 De-stack trial to be done with Dozers

| Location | Coal Type | Destination | Comments |
|-----------------------|-------------|-------------|---|
| T03 – VL Trial | C_VL11_VL12 | VL_Pad | North-Eastern Section (Separate from other VL) |
| | C_VL13 | SP_T | Southern End |
| | C_VL15 | SP_T2 | Northern End |

| COAL CODE | STOCKPILE | COMMENTS |
|-------------|-----------|-----------------------------------|
| C_LL1 | SP_B | Thin seam – take care when mining |
| C_LL2B_LL2T | | |
| C_LL3B | SP_M | |
| C_VU1_VU3 | SP_G | SP_N overflow |

T03 S01 – VL TRIAL



DAY SHIFT ONLY

T03S01 trial to be done with dozers

| Location | Coal Type | Destination | Comments |
|----------------|-------------|-------------|--|
| T03 – VL Trial | C_VL11_VL12 | VL_Pad | North-Eastern Section (Separate from other VL) |
| | C_VL13 | SP_T | Southern End |
| | C_VL15 | SP_T2 | Northern End |

VL Splitting Trial – Terrace 3

Purpose: To separate out the VL13 and VL15 as separate coal stockpiles on the main ROM, as these are the highest quality plies in the VL seam.


VL11_VL12 (including thick parting at the base)
Sent to the VL ROM, in the marked area.

Waste band
separated with
dozers and sent
to the dump

VL13 (clean coal) – Stockpiled separately on the main ROM,
South side of SP_T

VL15 (clean coal) – Stockpiled separately on the main ROM
Northern side of SP_T

**DAY SHIFT
ONLY**



Mine down to the thick waste band at the base of the VL11_VL12

Stockpile on the VL ROM, In the marked area.

**DAY SHIFT
ONLY**



Mine out the VL13 and stockpile on the main ROM

**DAY SHIFT
ONLY**



**DAY SHIFT
ONLY**

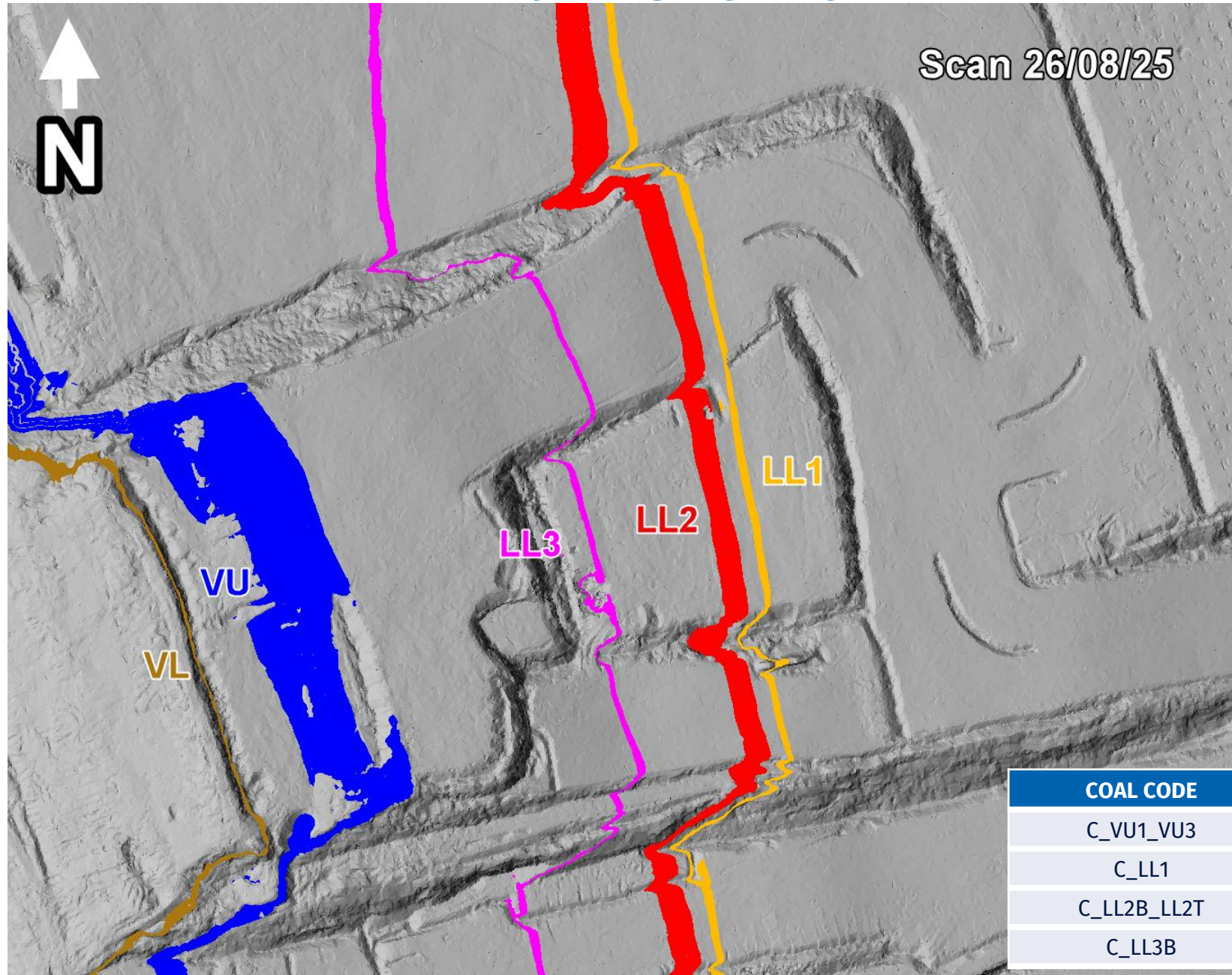
Split out the waste band using dozers – Send as waste



**DAY SHIFT
ONLY**

Mine the VL15 and stockpile separately on the main ROM

T04 - Overview



| COAL CODE | STOCKPILE | COMMENTS |
|-------------|-----------|-----------------------------------|
| C_VU1_VU3 | SP_O | |
| C_LL1 | SP_B | Thin seam – take care when mining |
| C_LL2B_LL2T | SP_P | |
| C_LL3B | SP_Q | |

T04/S01

| COAL CODE | STOCKPILE | COMMENTS |
|-------------|-----------|--|
| C_VU1_VU3 | SP_O | |
| C_LL1 | SP_B | Thin seam – take care when mining |
| C_LL2B_LL2T | SP_P | |
| C_LL3B | SP_M | Keep a gap between existing OX coal please |



VL

Roof Surveyed

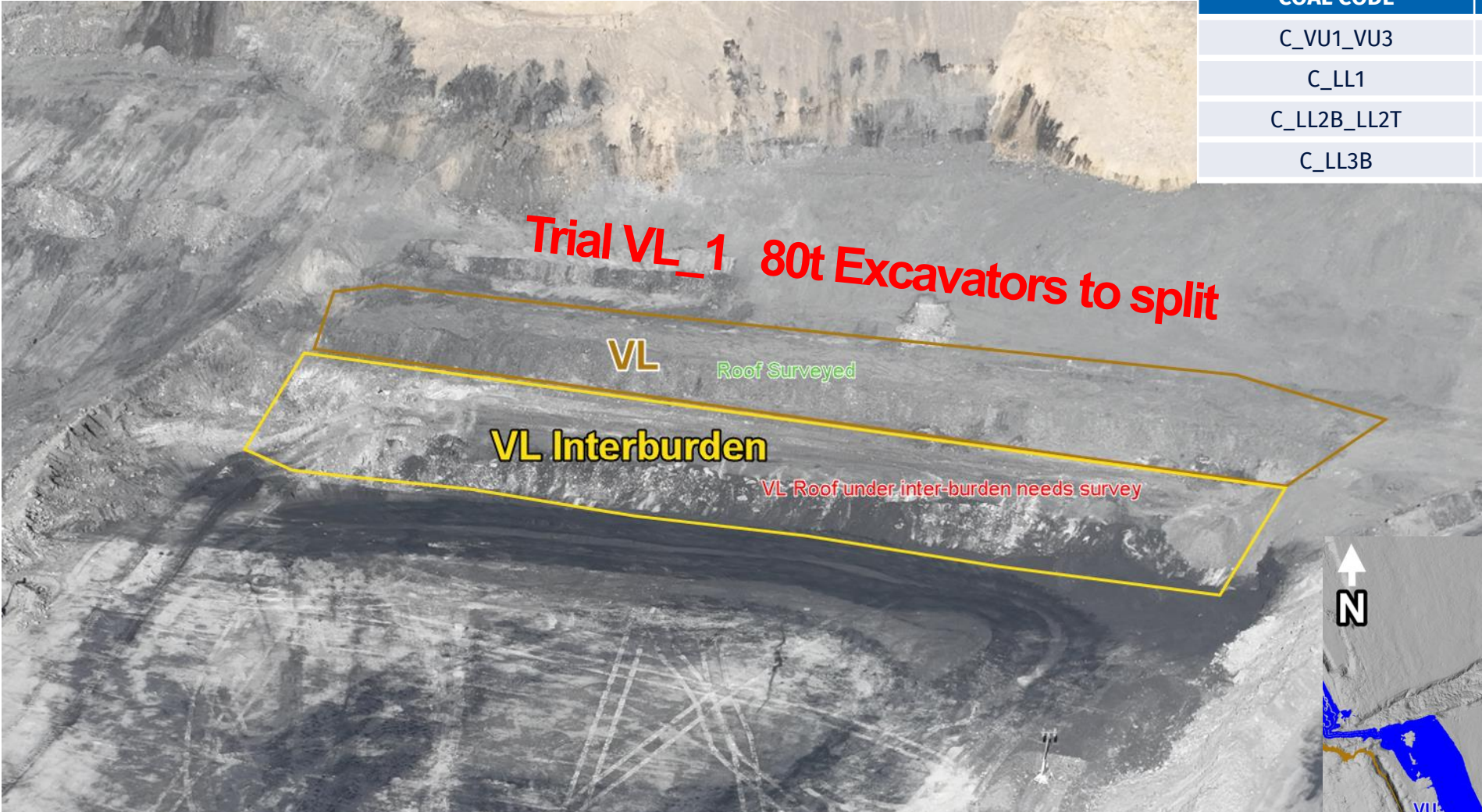
T04 S01 – VL TRIAL

DAY SHIFT ONLY

| Location | Coal Type | Destination | Comments |
|----------------|-------------|-------------|--|
| T03 – VL Trial | C_VL11_VL12 | VL_Pad | North-Eastern Section (Separate from other VL) |
| | C_VL13 | SP_T | Southern End |
| | C_VL15 | SP_T2 | Northern End |

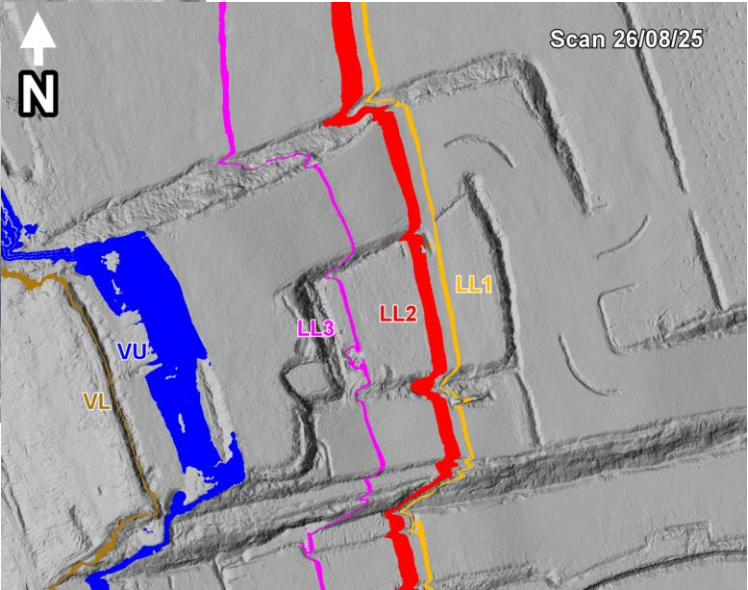
T04S01 Ramp 5 De-stack trial to be done with 80t Excavators

T04/S01 Ramp 5 De-Stack



| COAL CODE | STOCKPILE | COMMENTS |
|-------------|-----------|-----------------------------------|
| C_VU1_VU3 | SP_O | |
| C_LL1 | SP_B | Thin seam – take care when mining |
| C_LL2B_LL2T | SP_P | |
| C_LL3B | SP_Q | |

| Location | Coal Type | Destination | Comments |
|----------------|-------------|-------------|---|
| T03 – VL Trial | C_VL11_VL12 | VL_Pad | North-Eastern Section (Separate from other VL) |
| | C_VL13 | SP_T | Southern End |
| | C_VL15 | SP_T2 | Northern End |



VL Splitting Trial – Terrace 4

Purpose: To separate out the VL13 and VL15 as separate coal stockpiles on the main ROM, as these are the highest quality plies in the VL seam.


VL11_VL12 (including thick parting at the base)
Sent to the VL ROM, in the marked area.

Waste band
separated with
80t and sent to
the dump

VL13 (clean coal) – Stockpiled separately on the main ROM,
South side of SP_T

VL15 (clean coal) – Stockpiled separately on the main ROM
Northern side of SP_T

**DAY SHIFT
ONLY**



Mine down to the thick waste band at the base of the VL11_VL12

Stockpile on the VL ROM, In the marked area.

**DAY SHIFT
ONLY**



Mine out the VL13 and stockpile on the main ROM

**DAY SHIFT
ONLY**



**DAY SHIFT
ONLY**

Split out the waste band using 80t – Send as waste

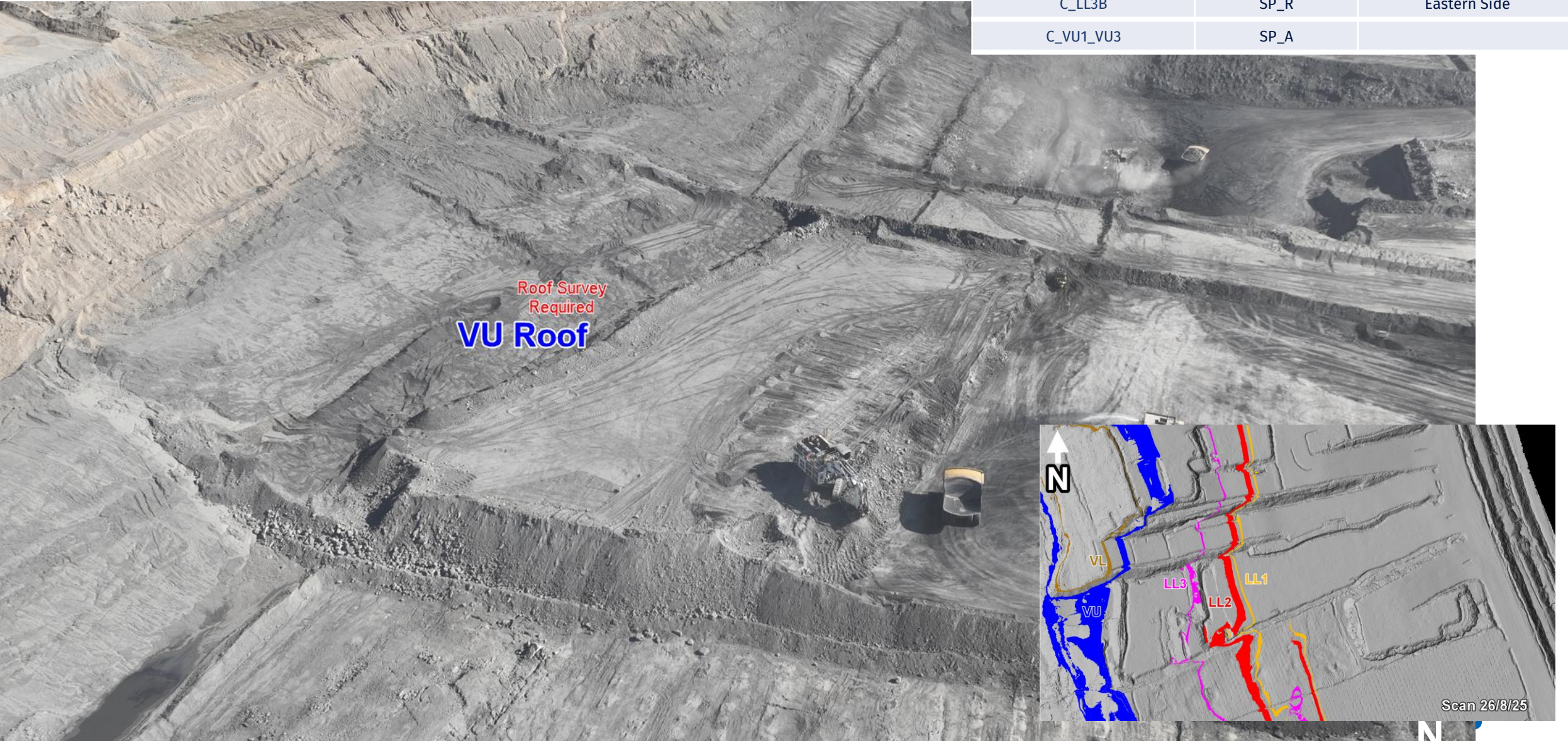


**DAY SHIFT
ONLY**

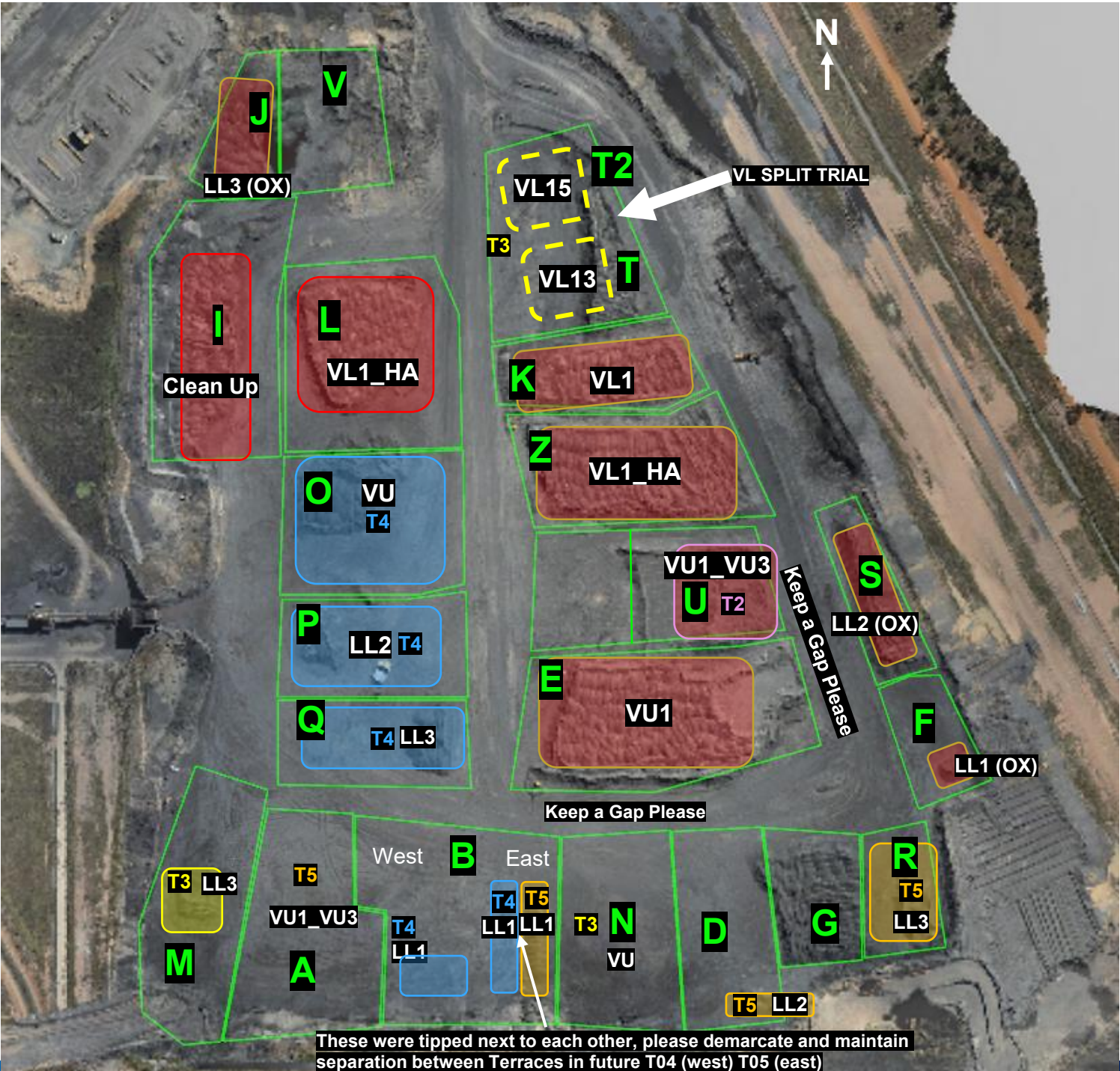
Mine the VL15 and stockpile separately on the main ROM

T05/S01 Ramp 6 De-Stack

| COAL CODE | STOCKPILE | COMMENTS |
|-------------|-----------|-----------------------------------|
| C_LL1 | SP_B | Thin seam – take care when mining |
| C_LL2T_LL2B | SP_D | |
| C_LL3B | SP_R | Eastern Side |
| C_VU1_VU3 | SP_A | |



ROM



These were tipped next to each other, please demarcate and maintain separation between Terraces in future T04 (west) T05 (east)

ROM



Communicate any direct feed start and finish time to CHPP control.

Notes:

Once Stockpile P is exhausted change to Blend 4

[illegible]

