

ODC Daily Coaling Plan

28/08/2025

Geologist Contact: 0473 223 132



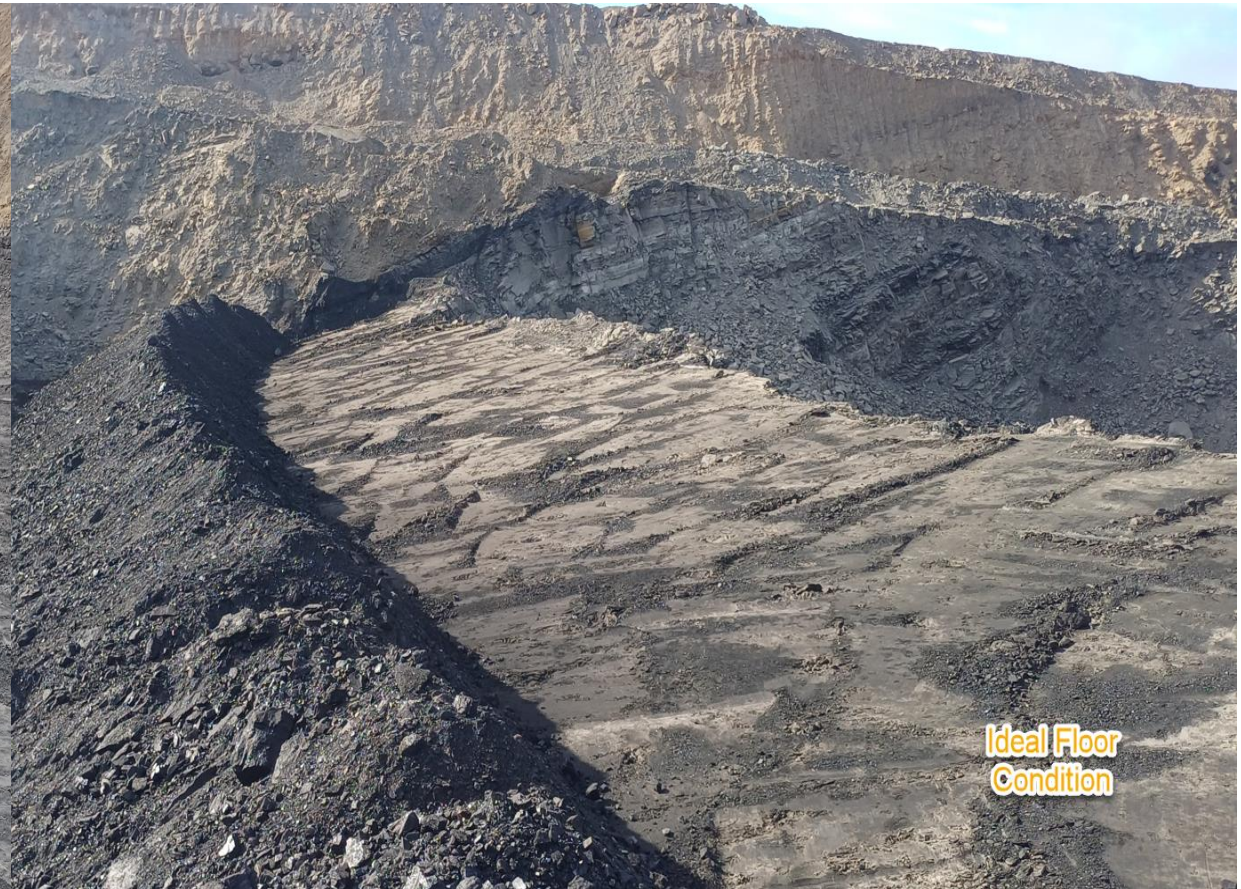
Coal Locations

Location	Coal Type	Destination	Comments
T03	C_VU1_VU3	SP_N	
	C_LL1	SP_B	Thin seam – take care when mining Tip Stockpile South to North
	C_LL2T_LL2B		
	C_LL3B	SP_M	Thin seam – take care when mining.
T04	C_LL1	SP_B (west)	Thin seam – take care when mining
	C_LL2T_LL2B	SP_P	
	C_LL3B	SP_Q	
	C_VU1_VU3	SP_O	
T05	C_LL1	SP_B (east)	Thin seam – take care when mining
	C_LL2T_LL2B	SP_D	
	C_LL3B	SP-R	Thin seam – take care when mining
	C_VU1_VU3	SP_A	

NON-
Trial
VL1 to
VL_PAD

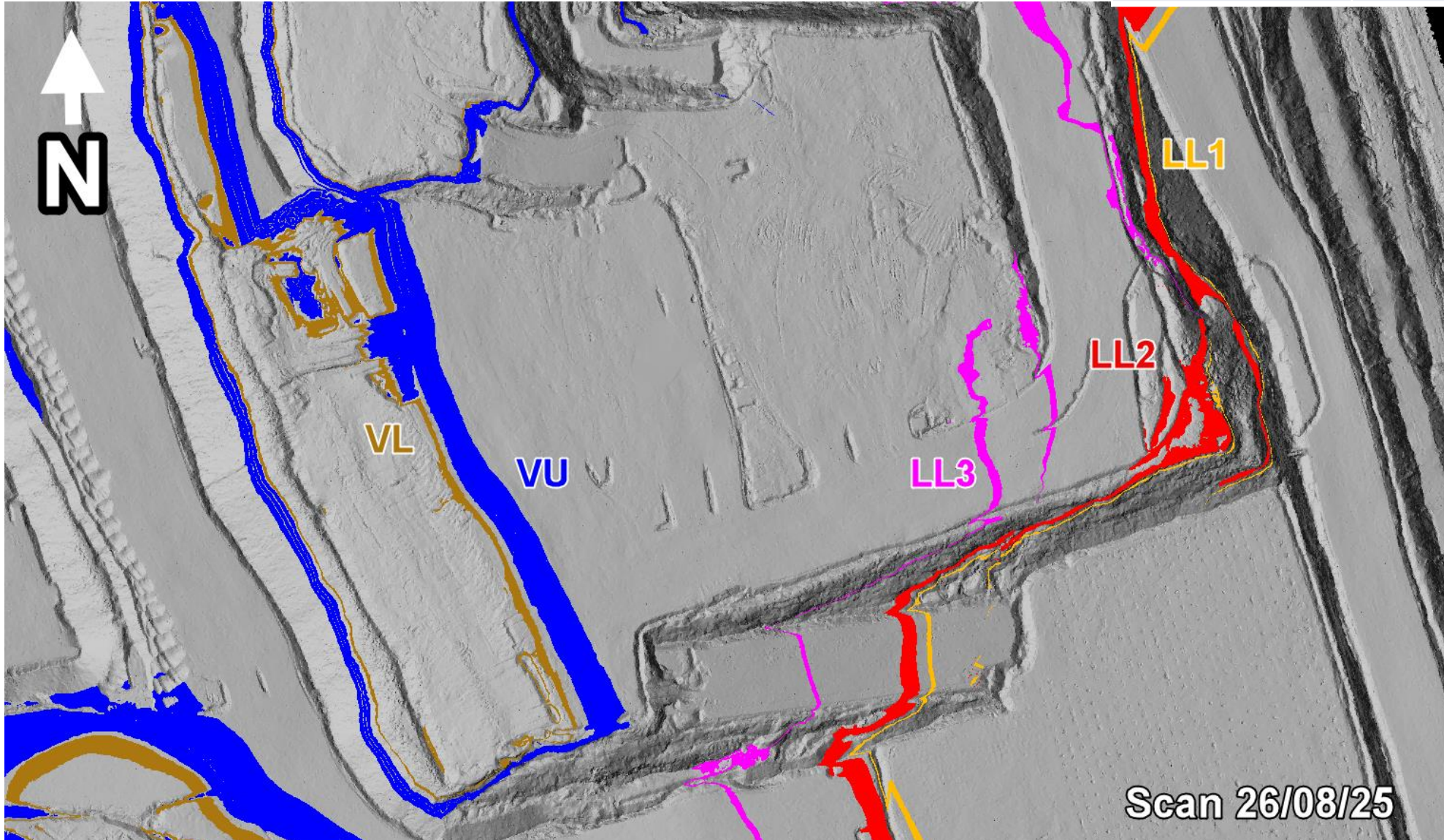
Location	Coal Type	Destination	Comments
T03 – VL Trial	C_VL11_VL12	VL_Pad	North-Eastern Section (Separate from other VL)
	C_VL13	SP_T	Southern End
	C_VL15	SP_T2	Northern End

Ideal Roof and Floor Conditions



T03 - Overview

COAL CODE	STOCKPILE	COMMENTS
C_LL1	SP_B	Thin seam – take care when mining
C_LL2B_LL2T		
C_LL3B	SP_M	
C_VU1_VU3	SP_G	SP_N overflow



T03/S01

Area has been mined full seam

Morning 28/08/2025

Please mark up back edges with 80t to guide dozer for push.

Process (DAY SHIFT ONLY):

1. 80t mark up back edge of VL14 (parting) and dozer
2. Dozer push down VL14 (parting) onto floor (push to side or load out)
3. Ensure 80t has marked up back edge of VL15 (good coal), and then dozer commence push of VL15. Take care when pushing down – have found only idle required with not a lot of power.

VL13 roof

VL13 prepped

VL15

VL14 (parting)

surveyed

N

VL Seam (VL1) Stratigraphy

T03_TP1 – Sampled on 13/08/25

Completed

Completed DS 28/08

Step 1: Split out VL14 (parting)

Step 2: Push down VL15 coal with dozers (good, bright coal). Aim to get this as clean as possible. Stockpile separately on SP_T2 (Northern end)

Location

Coal Type

Destination

Comments

T03 – VL Trial

C_VL11_VL12

VL_Pad

North-Eastern Section
(Separate from other VL)

C_VL13

SP_T

Southern End

C_VL15

SP_T2

Northern End

COAL CODE

STOCKPILE

COMMENTS

C_LL1

SP_B

Thin seam – take care when mining

C_LL2B_LL2T

C_LL3B

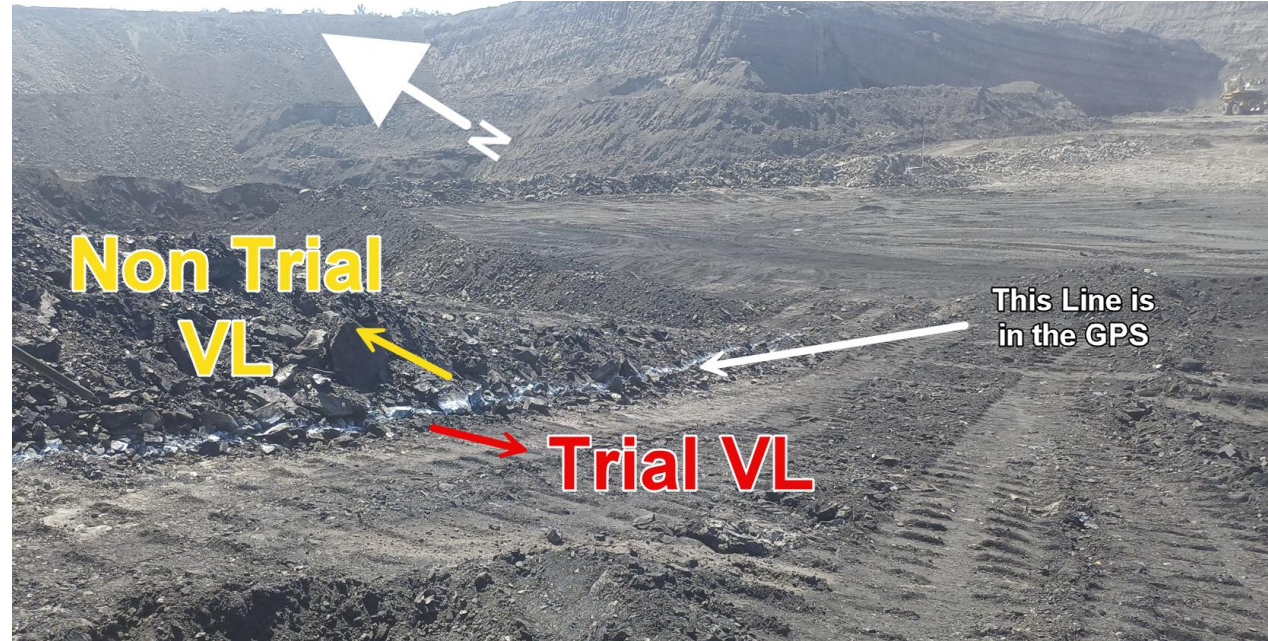
SP_M

C_VU1_VU3

SP_G

SP_N overflow

T03 S01 – VL TRIAL



DAY SHIFT ONLY

T03S01 trial to be done with dozers

Location	Coal Type	Destination	Comments
T03 – VL Trial	C_VL11_VL12	VL_Pad	North-Eastern Section (Separate from other VL)
	C_VL13	SP_T	Southern End
	C_VL15	SP_T2	Northern End

VL Splitting Trial – Terrace 3

Purpose: To separate out the VL13 and VL15 as separate coal stockpiles on the main ROM, as these are the highest quality plies in the VL seam.


VL11_VL12 (including thick parting at the base)
Sent to the VL ROM, in the marked area.

Waste band
separated with
dozers and sent
to the dump

VL13 (clean coal) – Stockpiled separately on the main ROM,
South side of SP_T

VL15 (clean coal) – Stockpiled separately on the main ROM
Northern side of SP_T

**DAY SHIFT
ONLY**



Mine down to the thick waste band at the base of the VL11_VL12

Stockpile on the VL ROM, In the marked area.

**DAY SHIFT
ONLY**



Mine out the VL13 and stockpile on the main ROM

**DAY SHIFT
ONLY**



**DAY SHIFT
ONLY**

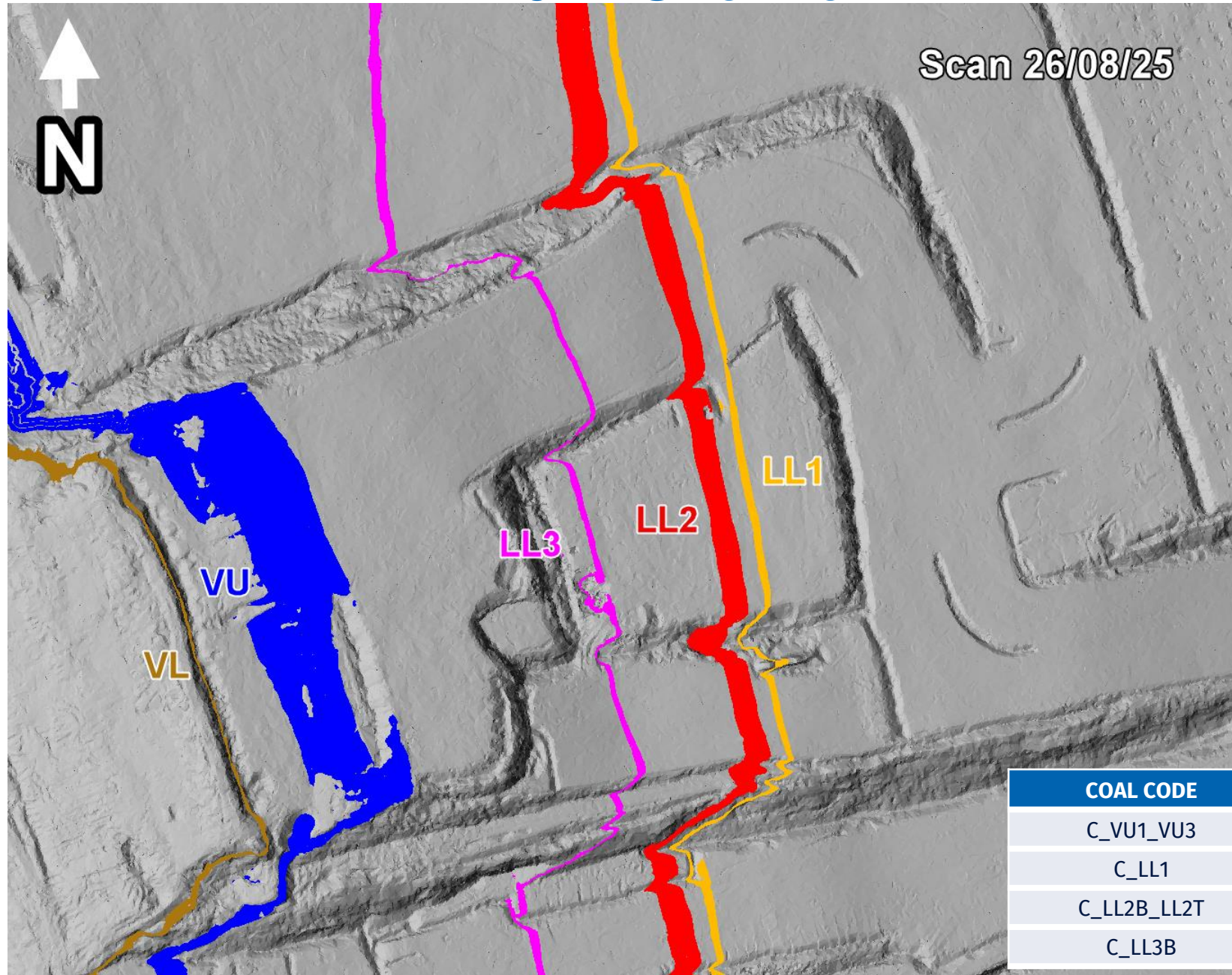
Split out the waste band using dozers – Send as waste



**DAY SHIFT
ONLY**

Mine the VL15 and stockpile separately on the main ROM

T04 - Overview



COAL CODE	STOCKPILE	COMMENTS
C_VU1_VU3	SP_O	
C_LL1	SP_B	Thin seam – take care when mining
C_LL2B_LL2T	SP_P	
C_LL3B	SP_Q	

T04/S01

COAL CODE	STOCKPILE	COMMENTS
C_VU1_VU3	SP_O	
C_LL1	SP_B	Thin seam – take care when mining
C_LL2B_LL2T	SP_P	
C_LL3B	SP_M	Keep a gap between existing OX coal please



T04/S01 (LL's)

Morning 28/08/2025



COAL CODE	STOCKPILE	COMMENTS
C_VU1_VU3	SP_O	
C_LL1	SP_B	Thin seam – take care when mining
C_LL2B_LL2T	SP_P	
C_LL3B	SP_M	Keep a gap between existing OX coal please

T04 S01 – VL TRIAL

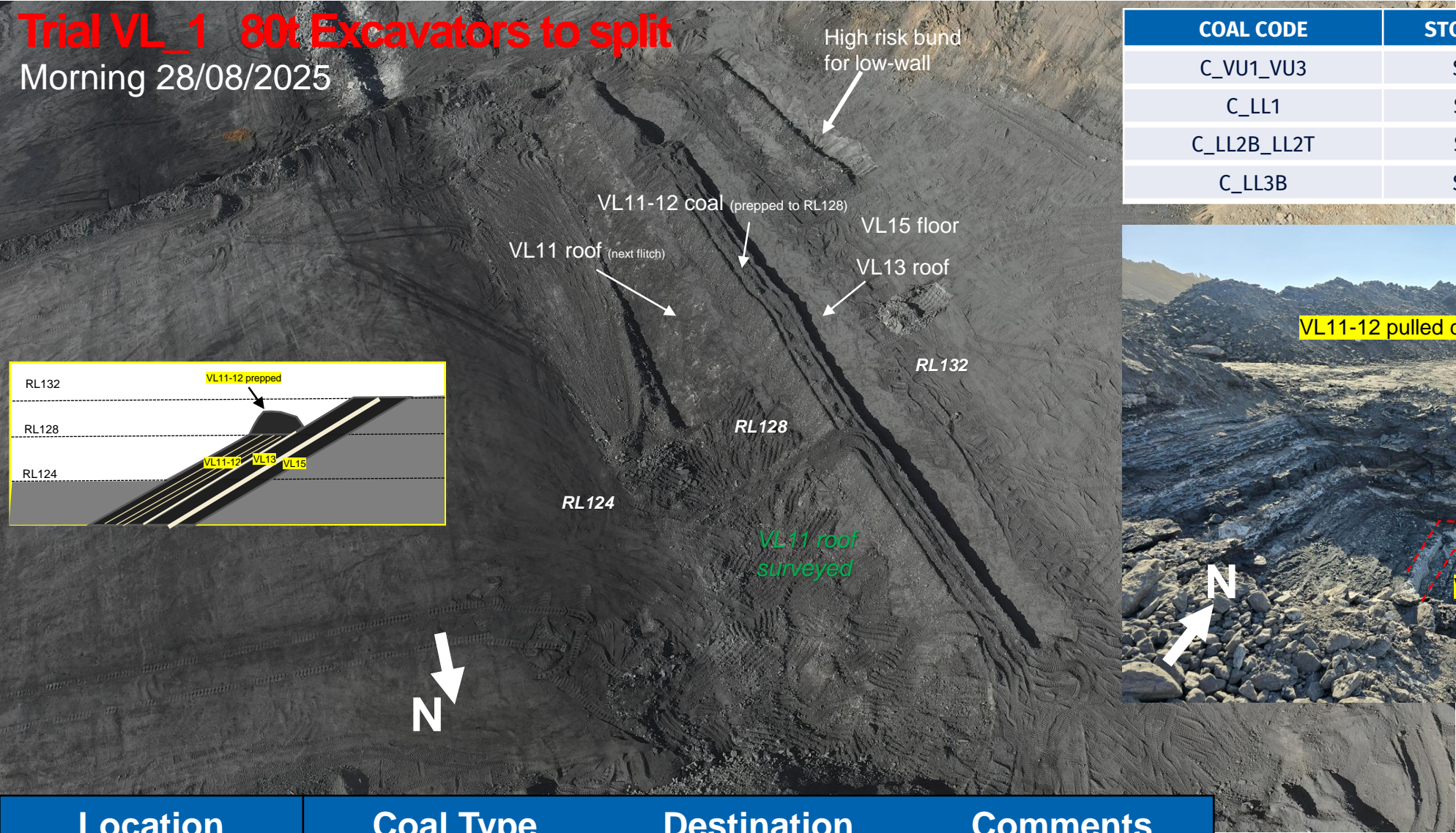
DAY SHIFT ONLY

Location	Coal Type	Destination	Comments
T03 – VL Trial	C_VL11_VL12	VL_Pad	North-Eastern Section (Separate from other VL)
	C_VL13	SP_T	Southern End
	C_VL15	SP_T2	Northern End

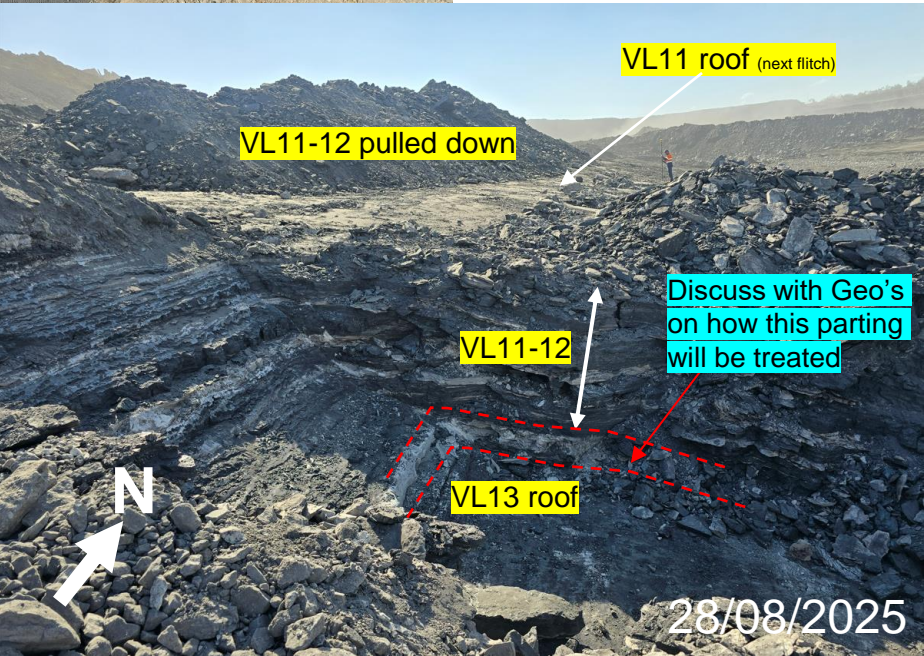
**T04S01 Ramp 5 De-stack trial to be done with 80t
Excavators**

Trial VL_1 80t Excavators to split

Morning 28/08/2025



COAL CODE	STOCKPILE	COMMENTS
C_VU1_VU3	SP_O	
C_LL1	SP_B	Thin seam – take care when mining
C_LL2B_LL2T	SP_P	
C_LL3B	SP_Q	



Location	Coal Type	Destination	Comments
T03 – VL Trial	C_VL11_VL12	VL_Pad	North-Eastern Section (Separate from other VL)
	C_VL13	SP_T	Southern End
	C_VL15	SP_T2	Northern End

VL Splitting Trial – Terrace 4

Purpose: To separate out the VL13 and VL15 as separate coal stockpiles on the main ROM, as these are the highest quality plies in the VL seam.


VL11_VL12 (including thick parting at the base)
Sent to the VL ROM, in the marked area.

Waste band
separated with
80t and sent to
the dump

VL13 (clean coal) – Stockpiled separately on the main ROM,
South side of SP_T

VL15 (clean coal) – Stockpiled separately on the main ROM
Northern side of SP_T

**DAY SHIFT
ONLY**



Mine down to the thick waste band at the base of the VL11_VL12

Stockpile on the VL ROM, In the marked area.

**DAY SHIFT
ONLY**



Mine out the VL13 and stockpile on the main ROM

**DAY SHIFT
ONLY**



**DAY SHIFT
ONLY**

Split out the waste band using 80t – Send as waste

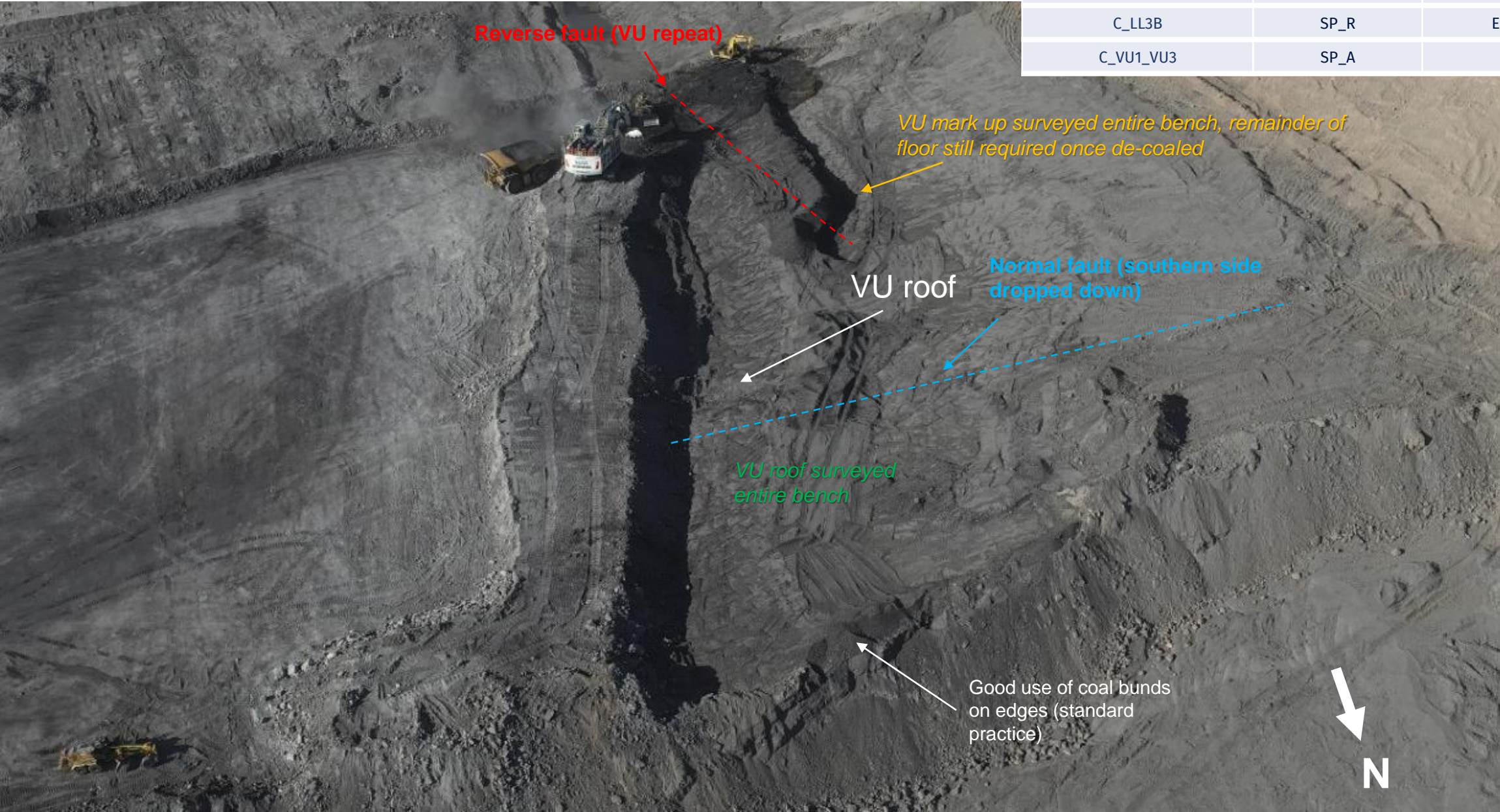


**DAY SHIFT
ONLY**

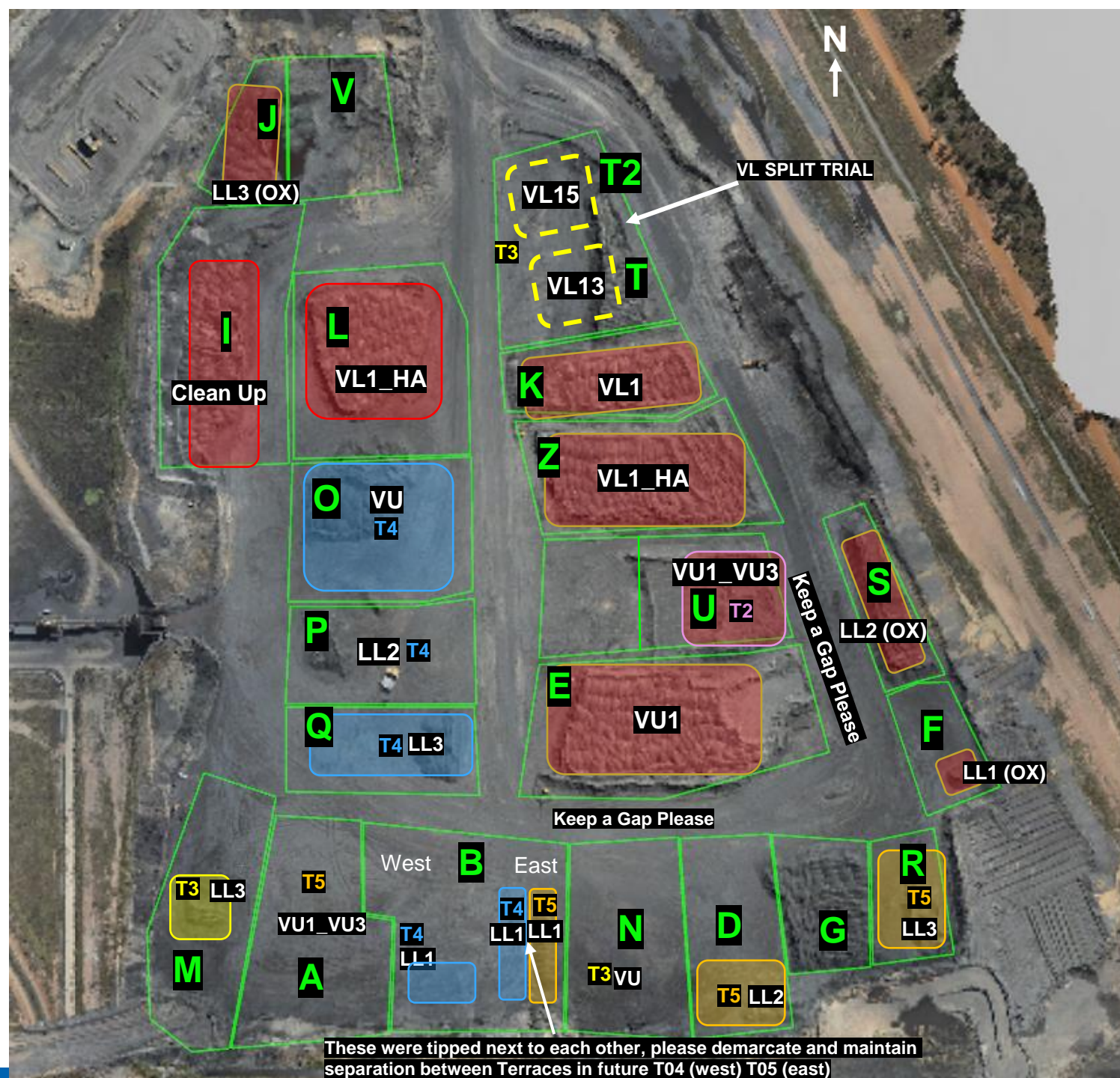
Mine the VL15 and stockpile separately on the main ROM

T05/S01 Ramp 6 De-Stack

COAL CODE	STOCKPILE	COMMENTS
C_LL1	SP_B	Thin seam – take care when mining
C_LL2T_LL2B	SP_D	
C_LL3B	SP_R	Eastern Side
C_VU1_VU3	SP_A	



ROM



THIASS

Tip Stockpiles South to North

ROM



Communicate any direct feed start and finish time to CHPP control.

Currently on Blend 4

Once Stockpile D is exhausted change to Blend 2
Once Stockpile O is exhausted change to Blend 5

Notes:

Change to VL trial whenever mining is ready to direct feed full Batch. Once trial is complete return to whichever Blend running on previously.

Blends								
Feed 1	Feed 2	Feed 3	Ratio	ROM Loaders	ROM Trucks	Direct Feed	Comments	active
SP-T			Straight			Yes	VL Trial Blend (VL13 and VL15)	
SP-O	SP-U		1:1			No	1 x VU (T04S01) : 1 x VU FA	
SP-O	SP-D		1:1			NO	1 x VU (T04S01) : 1 x LL2 (T05S01)	x
SP-S	SP-U	SP-R	1:1:1			No	1 x LL2 (Ox T04S01) : 1 x VU FA : 1 x LL3 (T03S02)	

[illegible]

