

ODC Daily Coaling Plan

29/08/2025

Geologist Contact: 0473 223 132



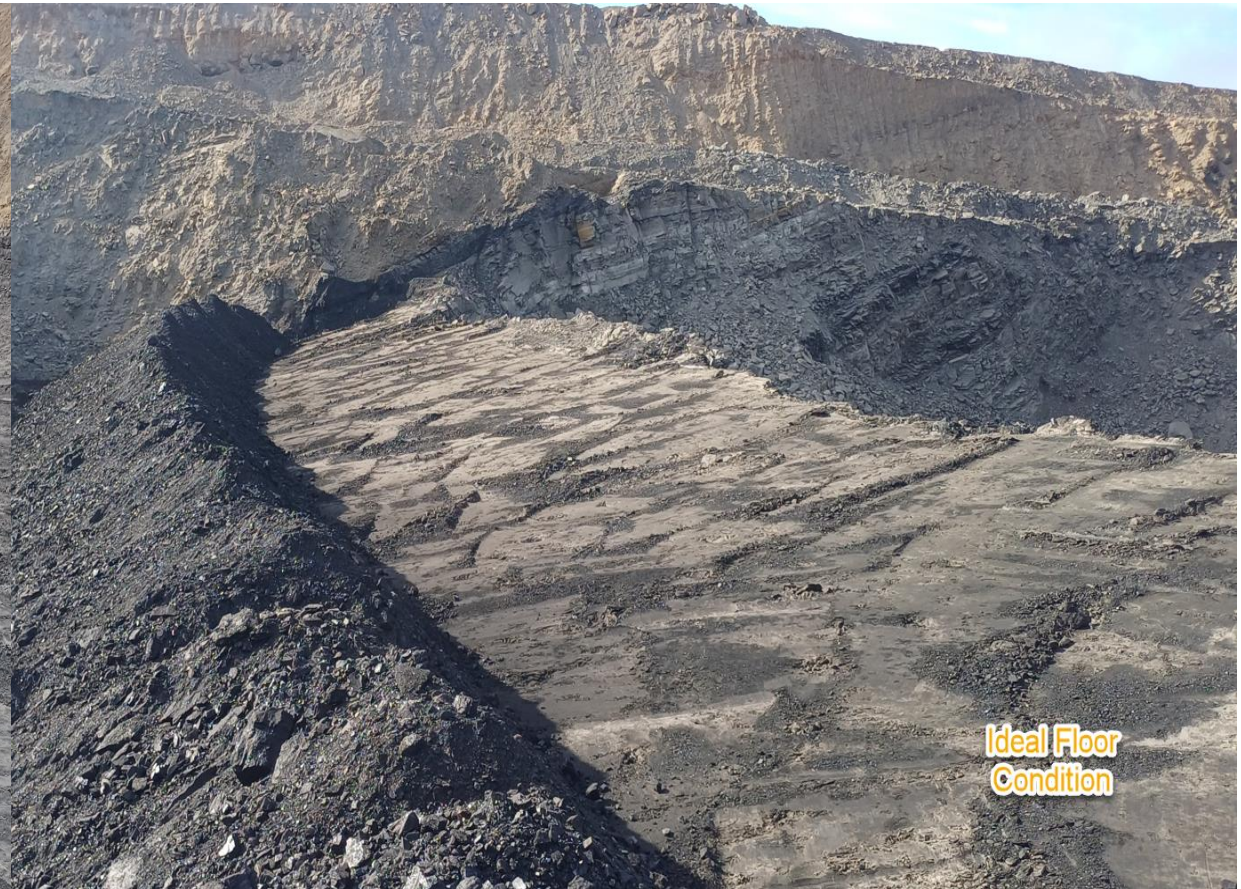
Coal Locations

Location	Coal Type	Destination	Comments
T03	C_VU1_VU3	SP_N	
	C_LL1	SP_B	Thin seam – take care when mining Tip Stockpile South to North
	C_LL2T_LL2B		
	C_LL3B	SP_M	Thin seam – take care when mining.
T04	C_LL1	SP_B (west)	Thin seam – take care when mining
	C_LL2T_LL2B	SP_P	
	C_LL3B	SP_Q	
	C_VU1_VU3	SP_O	
T05	C_LL1	SP_B (east)	Thin seam – take care when mining
	C_LL2T_LL2B	SP_D	
	C_LL3B	SP-R	Thin seam – take care when mining
	C_VU1_VU3	SP_A	

NON-Trial
VL1 to
VL_PAD

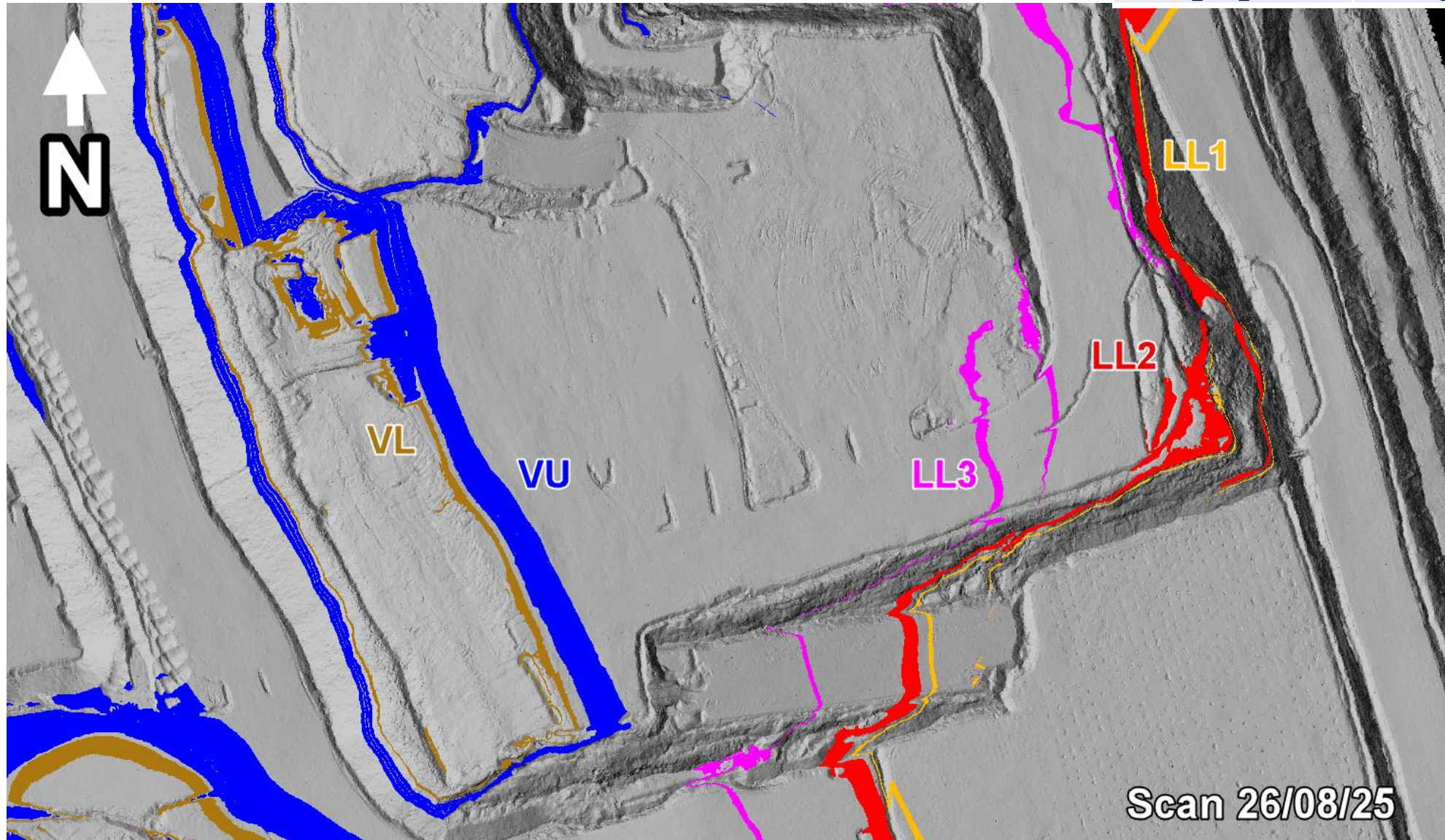
Location	Coal Type	Destination	Comments
T03/04 – VL Trial	C_VL11_VL12	VL_Pad	North-Eastern Section (Separate from other VL)
	C_VL13	SP_T	Southern End
	C_VL15	SP_T2	Northern End

Ideal Roof and Floor Conditions



T03 - Overview

COAL CODE	STOCKPILE	COMMENTS
C_LL1	SP_B	Thin seam – take care when mining
C_LL2B_LL2T		
C_LL3B	SP_M	
C_VU1_VU3	SP_G	SP_N overflow



T03/S01

Afternoon 29/08/2025

80t digger ONLY

Remaining Process (DAY SHIFT ONLY):

1. Clean up any remaining VL13 remaining (in orange polygon)
2. Pull down VL14 parting (waste) with 80t digger (blue polygon) exposing VL15 roof
3. Clean VL15 roof further with 80t digger
4. Throw down VL15 into piles on floor (likely need 3 side-casts) **attempting to break up any slabby material**
5. Load out VL15 to SP-T2 (north) for geo inspection on ROM

VL15 roof marked up with 80t

Area has been mined full seam

surveyed

VL15 roof – please clean further with 80t

VL14 parting to be pulled down with 80t

VL14 (parting) pushed down by dozer

Small amount of cleanup VL13

VL13 clean up

→ N

Location

Coal Type

Destination

Comments

T03 – VL Trial

C_VL11_VL12

VL_Pad

North-Eastern Section
(Separate from other VL)

C_VL13

SP_T

Southern End

C_VL15

SP_T2

Northern End

COAL CODE

STOCKPILE

COMMENTS

C_LL1

SP_B

Thin seam – take care when mining

C_LL2B_LL2T

C_LL3B

SP_M

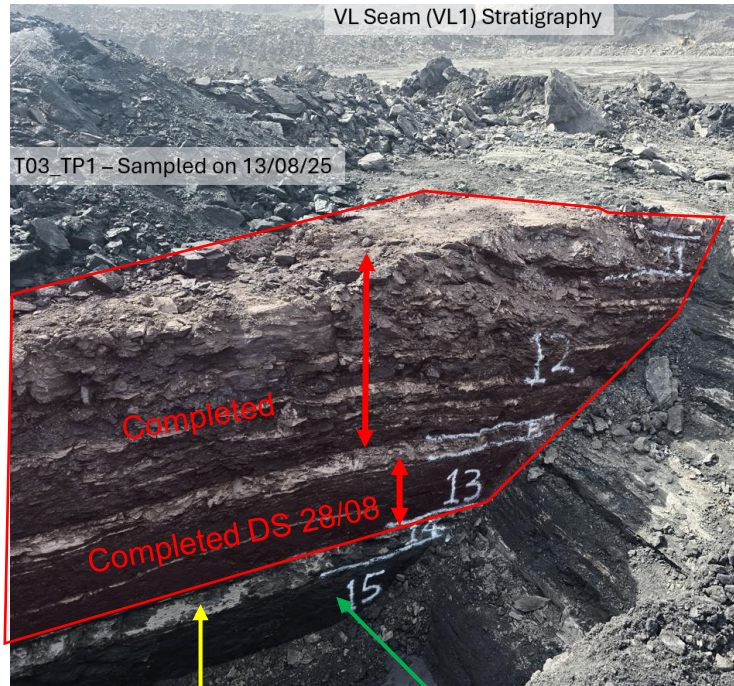
C_VU1_VU3

SP_G

SP_N overflow

ESS

T03 S01 – VL TRIAL



Step 1: Split out VL14 (parting)
with 80t

Step 2: Pull down VL15 coal
with 80t (good, bright coal). Aim
to get this as clean as
possible. Stockpile separately
on SP_T2 (Northern end)

DAY SHIFT ONLY

**T03S01 trial to be done with
80t diggers ONLY**

Location	Coal Type	Destination	Comments
T03 – VL Trial	C_VL11_VL12	VL_Pad	North-Eastern Section (Separate from other VL)
	C_VL13	SP_T	Southern End
	C_VL15	SP_T2	Northern End

VL Splitting Trial – Terrace 3

Purpose: To separate out the VL13 and VL15 as separate coal stockpiles on the main ROM, as these are the highest quality plies in the VL seam.


VL11_VL12 (including thick parting at the base)
Sent to the VL ROM, in the marked area.

Waste band
separated with
80t and sent to
the dump

VL13 (clean coal) – Stockpiled separately on the main ROM,
South side of SP_T

VL15 (clean coal) – Stockpiled separately on the main ROM
Northern side of SP_T

**DAY SHIFT
ONLY**



Mine down to the thick waste band at the base of the VL11_VL12

Stockpile on the VL ROM, In the marked area.

**DAY SHIFT
ONLY**



Mine out the VL13 and stockpile on the main ROM

**DAY SHIFT
ONLY**



**DAY SHIFT
ONLY**

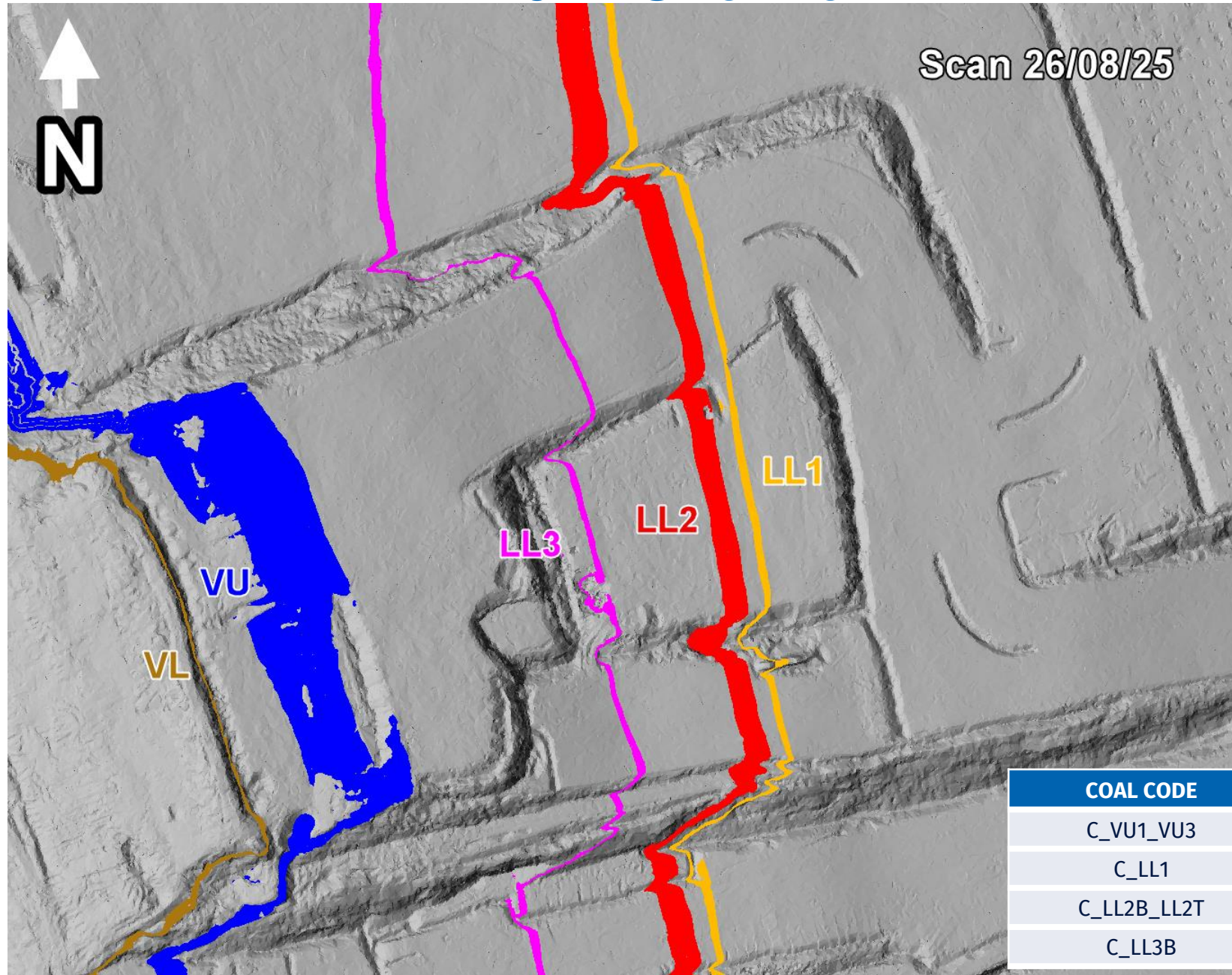
Split out the waste band using 80t – Send as waste



**DAY SHIFT
ONLY**

Mine the VL15 and stockpile separately on the main ROM

T04 - Overview



COAL CODE	STOCKPILE	COMMENTS
C_VU1_VU3	SP_O	
C_LL1	SP_B	Thin seam – take care when mining
C_LL2B_LL2T	SP_P	
C_LL3B	SP_Q	

T04/S01 (LL's)

Morning 28/08/2025



COAL CODE	STOCKPILE	COMMENTS
C_VU1_VU3	SP_O	
C_LL1	SP_B	Thin seam – take care when mining
C_LL2B_LL2T	SP_P	
C_LL3B	SP_M	Keep a gap between existing OX coal please

T04 S01 – VL TRIAL

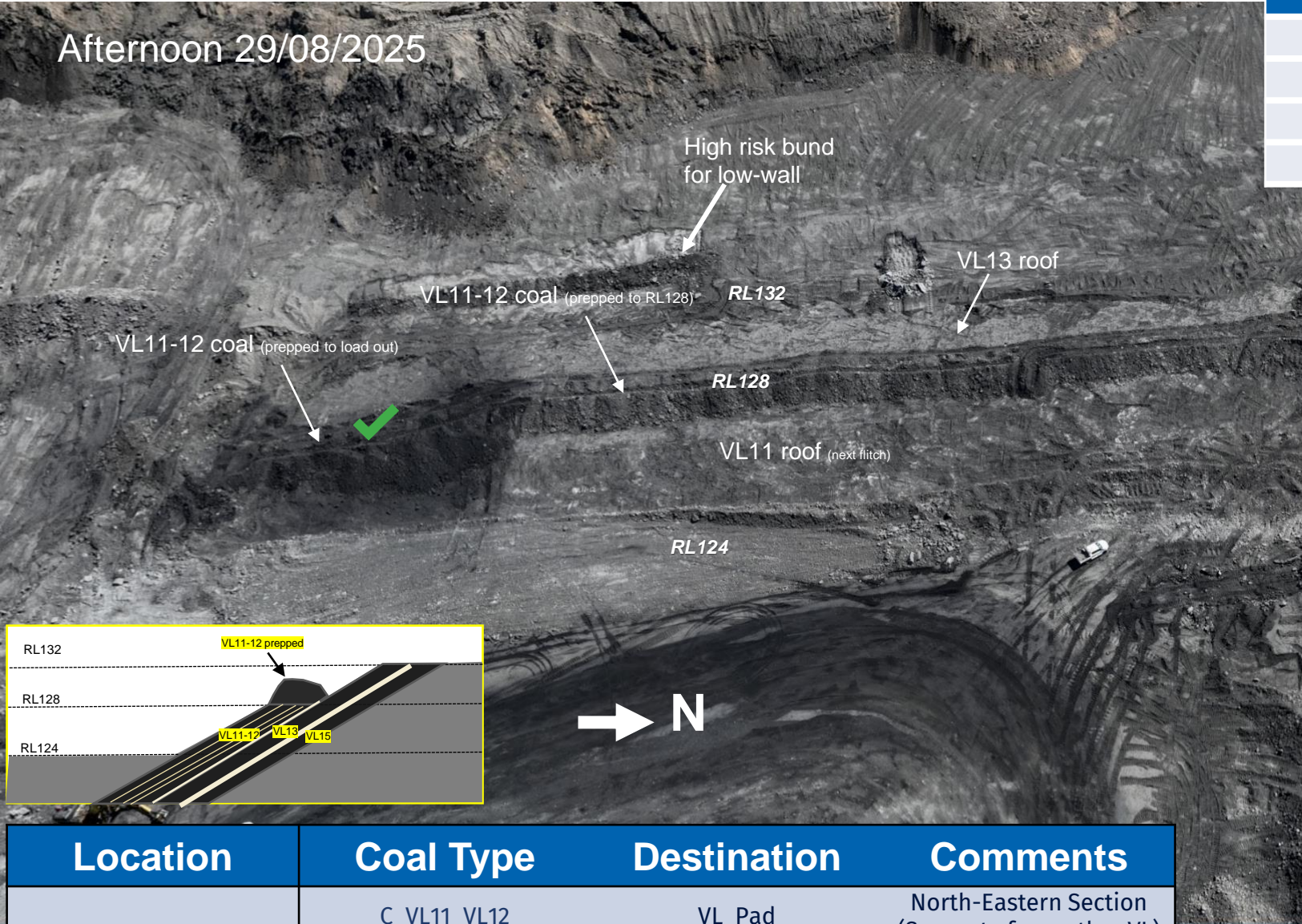
DAY SHIFT ONLY

Location	Coal Type	Destination	Comments
T03 – VL Trial	C_VL11_VL12	VL_Pad	North-Eastern Section (Separate from other VL)
	C_VL13	SP_T	Southern End
	C_VL15	SP_T2	Northern End

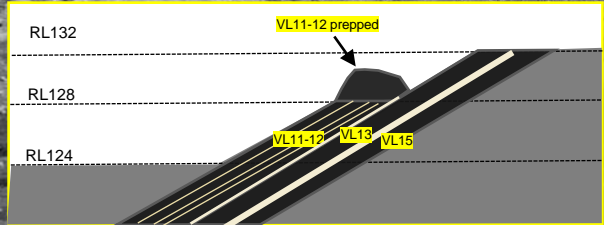
T04S01 Ramp 5 De-stack trial to be done with 80t Excavators

Trial VL_1 80t Excavators to split

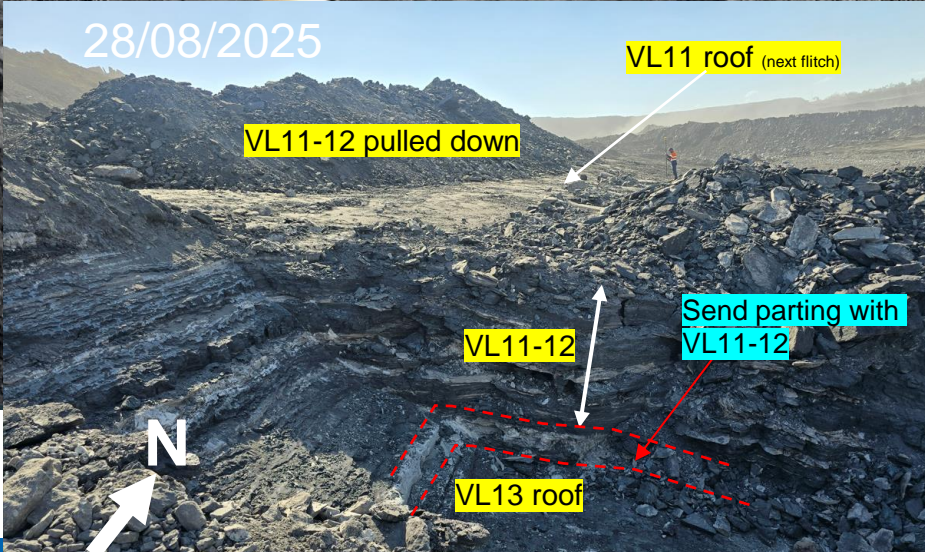
Afternoon 29/08/2025



COAL CODE	STOCKPILE	COMMENTS
C_VU1_VU3	SP_O	
C_LL1	SP_B	Thin seam – take care when mining
C_LL2B_LL2T	SP_P	
C_LL3B	SP_Q	



Location	Coal Type	Destination	Comments
T03 – VL Trial	C_VL11_VL12	VL_Pad	North-Eastern Section (Separate from other VL)
	C_VL13	SP_T	Southern End
	C_VL15	SP_T2	Northern End



VL Splitting Trial – Terrace 4

Purpose: To separate out the VL13 and VL15 as separate coal stockpiles on the main ROM, as these are the highest quality plies in the VL seam.


VL11_VL12 (including thick parting at the base)
Sent to the VL ROM, in the marked area.

Waste band
separated with
80t and sent to
the dump

VL13 (clean coal) – Stockpiled separately on the main ROM,
South side of SP_T

VL15 (clean coal) – Stockpiled separately on the main ROM
Northern side of SP_T

**DAY SHIFT
ONLY**



Mine down to the thick waste band at the base of the VL11_VL12

Stockpile on the VL ROM, In the marked area.

**DAY SHIFT
ONLY**



Mine out the VL13 and stockpile on the main ROM

**DAY SHIFT
ONLY**



**DAY SHIFT
ONLY**

Split out the waste band using 80t – Send as waste



**DAY SHIFT
ONLY**

Mine the VL15 and stockpile separately on the main ROM

T05/S01 Ramp 6 De-Stack

COAL CODE	STOCKPILE	COMMENTS
C_LL1	SP_B	Thin seam – take care when mining
C_LL2T_LL2B	SP_D	
C_LL3B	SP_R	Eastern Side
C_VU1_VU3	SP_A	

Afternoon 29/08/2025



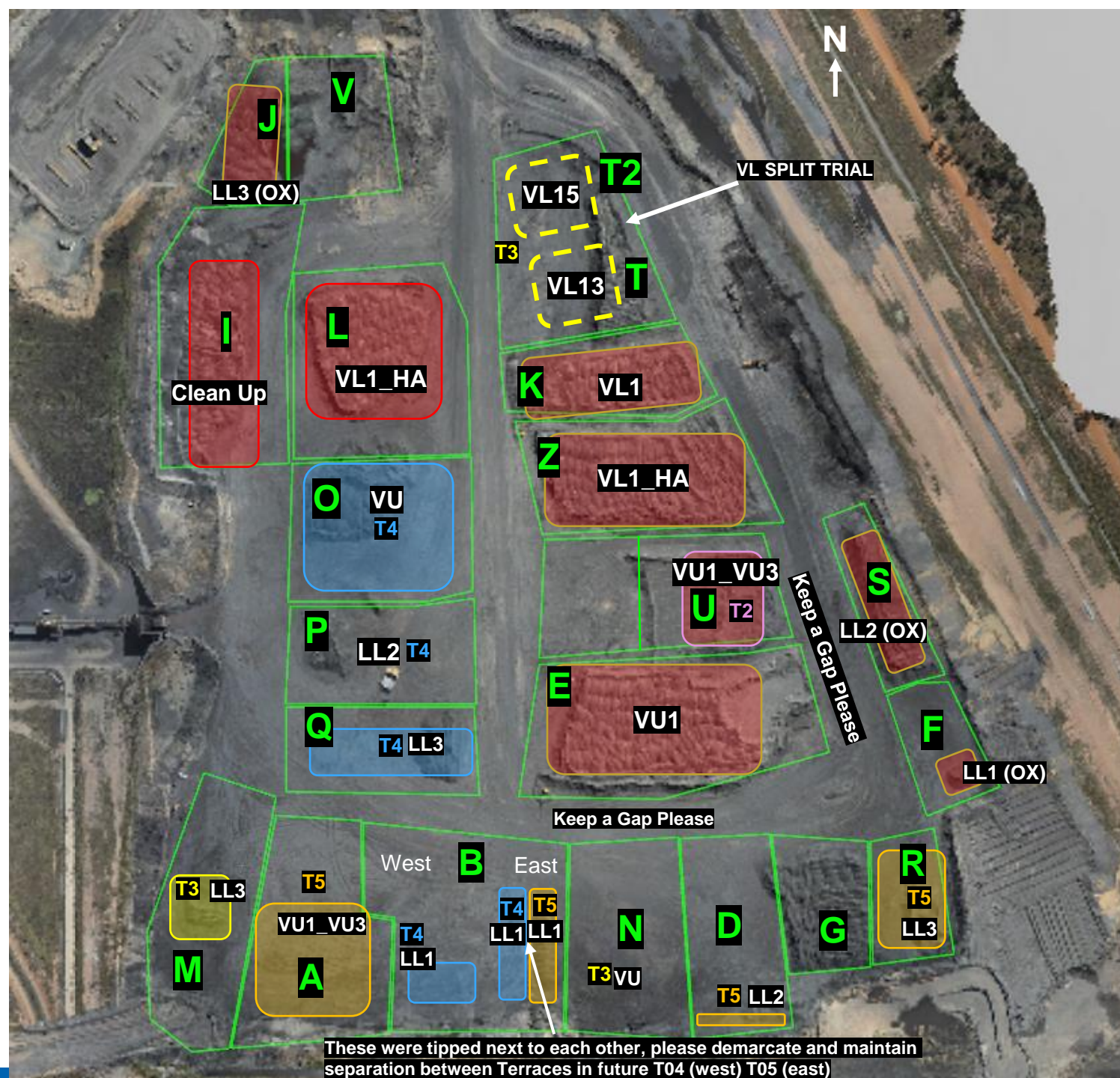
T05/S02

Afternoon 29/08/2025

COAL CODE	STOCKPILE	COMMENTS
C_LL1	SP_B	Thin seam – take care when mining
C_LL2T_LL2B	SP_D	
C_LL3B	SP_R	Eastern Side
C_VU1_VU3	SP_A	



ROM



THIASS

Tip Stockpiles South to North

ROM



CHPP Coal Feed Sequence

Communicate any direct feed start and finish time to CHPP control.

Comments

Currently on Blend 4

Once Stockpile D is exhausted change to Blend 2
Once Stockpile O is exhausted change to Blend 3

Notes:

Change to VL trial whenever mining is ready to direct feed full Batch. Once trial is complete return to whichever Blend running on previously.

	Blends								
	Feed 1	Feed 2	Feed 3	Ratio	ROM Loaders	ROM Trucks	Direct Feed	Comments	active
VL TRIAL	SP-T			Straight			Yes	VL Trial Blend (VL13 and VL15)	
Blend 2	SP-O	SP-U		1:1			No	1 x VU (T04S01) : 1 x VU FA	
Blend 3	SP-A	SP-U		1:1			No	1 x VU (T03S01) : 1 x VU FA	
Blend 4	SP-O	SP-D		1:1			NO	1 x VU (T04S01) : 1 x LL2 (T05S01)	x
Blend 5	SP-S	SP-U	SP-R	1:1:1			No	1 x LL2 (Ox T04S01) : 1 x VU FA : 1 x LL3 (T03S02)	
Blend 6									
Wet weather									

