

ODC Daily Coaling Plan

03/09/2025

Geologist Contact: 0473 223 132



Coal Locations

Location	Coal Type	Destination	Comments
T03	C_VU1_VU3	SP_N	
	C_LL1	SP_B	Thin seam – take care when mining Tip Stockpile South to North
	C_LL2T_LL2B		
	C_LL3B	SP_M	Thin seam – take care when mining.
T04	C_LL1	SP_B (west)	Thin seam – take care when mining
	C_LL2T_LL2B	SP_P	
	C_LL3B	SP_Q	
	C_VU1_VU3	SP_O	
T05	C_LL1	SP_B (east)	Thin seam – take care when mining
	C_LL2T_LL2B	SP_D/SP-N	SP-D for ramp de-stack and SP-N for T05 dig
	C_LL3B	SP-R	Thin seam – take care when mining
	C_VU1_VU3	SP_A	

Location	Coal Type	Destination	Comments
T03/04 – VL Trial	C_VL11_VL12	VL_Pad	North-Eastern Section (Separate from other VL)
	C_VL13	SP_T	Southern End
	C_VL15	SP_T2	Northern End

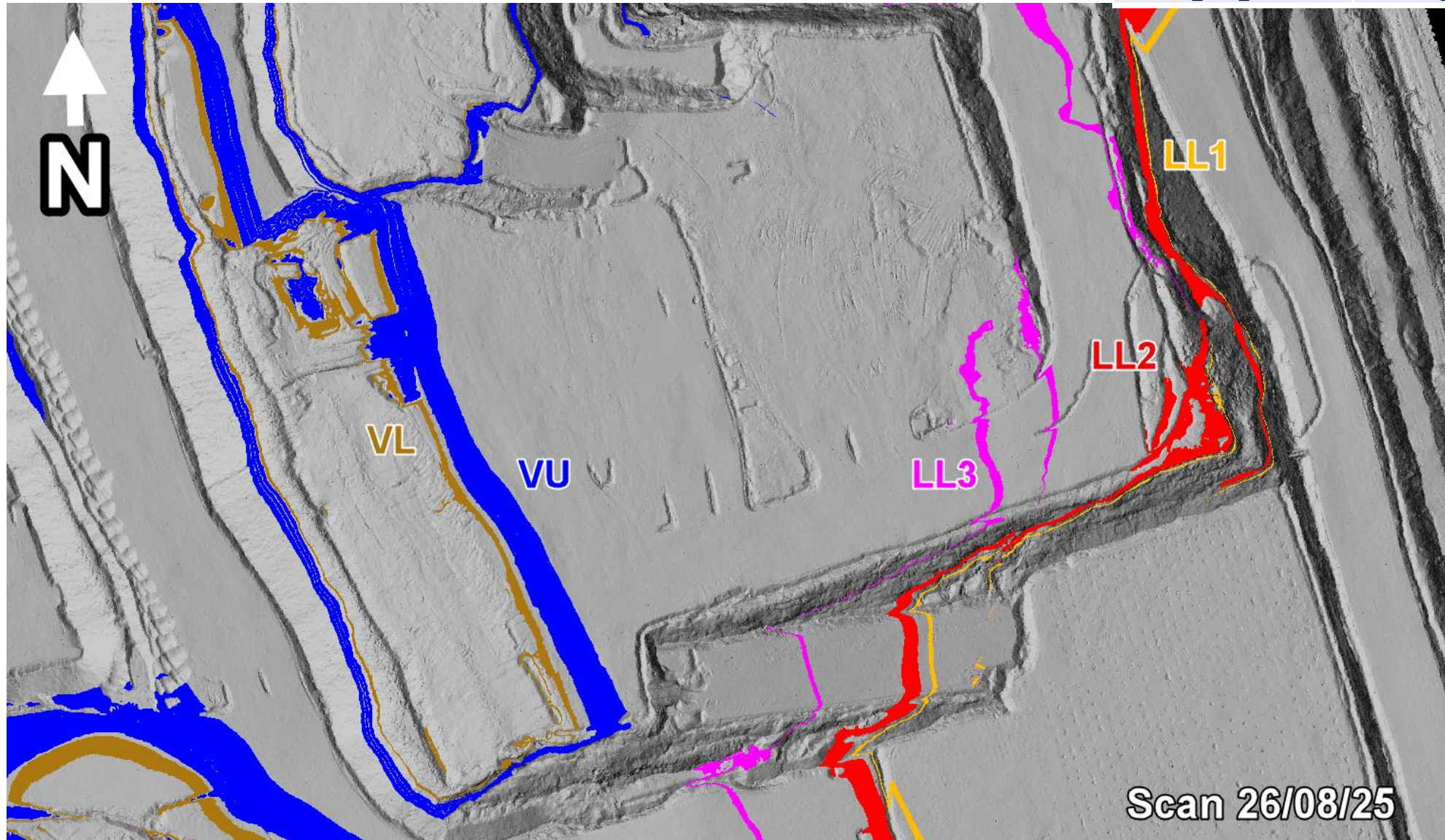
NON-
Trial
VL1 to
VL_PAD

Ideal Roof and Floor Conditions

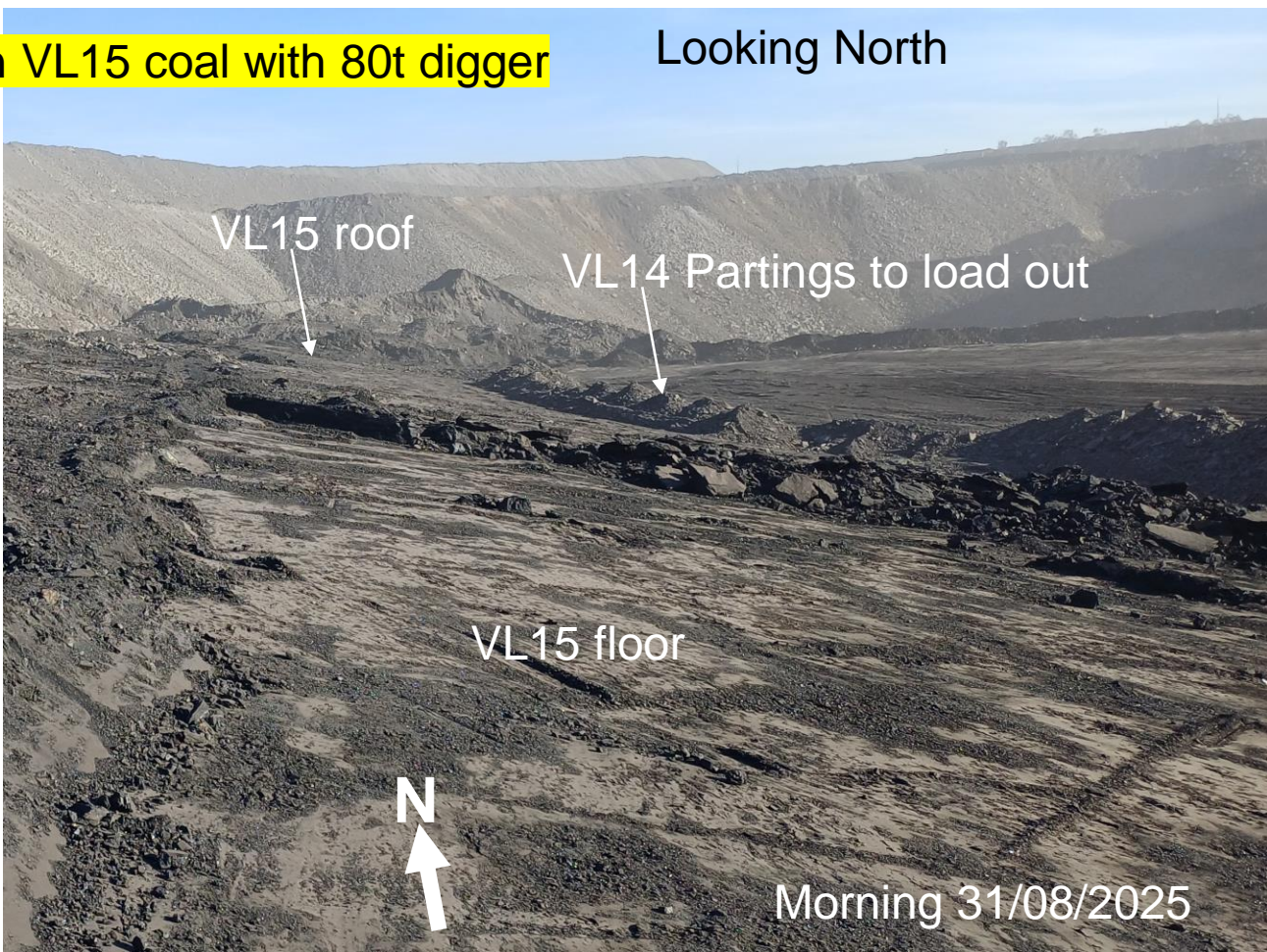
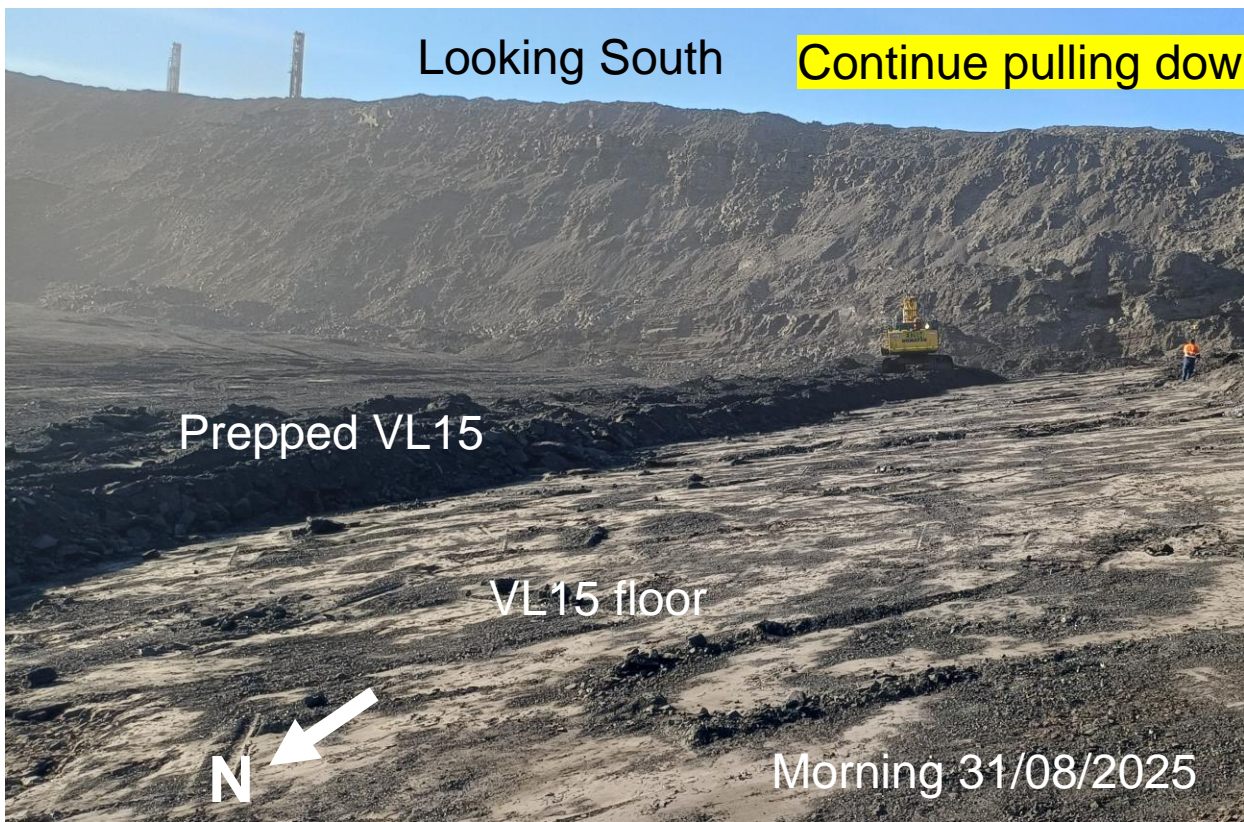


T03 - Overview

COAL CODE	STOCKPILE	COMMENTS
C_LL1	SP_B	Thin seam – take care when mining
C_LL2B_LL2T		
C_LL3B	SP_M	
C_VU1_VU3	SP_G	SP_N overflow



T03/S01 (VL Trial)



Have received good feedback so far from client on the coal prep of VL15, thanks for your efforts.

Location	Coal Type	Destination	Comments
T03 – VL Trial	C_VL11_VL12	VL_Pad	North-Eastern Section (Separate from other VL)
	C_VL13	SP_T	Southern End
	C_VL15	SP_T2	Northern End

COAL CODE	STOCKPILE	COMMENTS
C_LL1	SP_B	Thin seam – take care when mining
C_LL2B_LL2T		
C_LL3B	SP_M	
C_VU1_VU3	SP_G	SP_N overflow

T03/S01 (VL Trial)

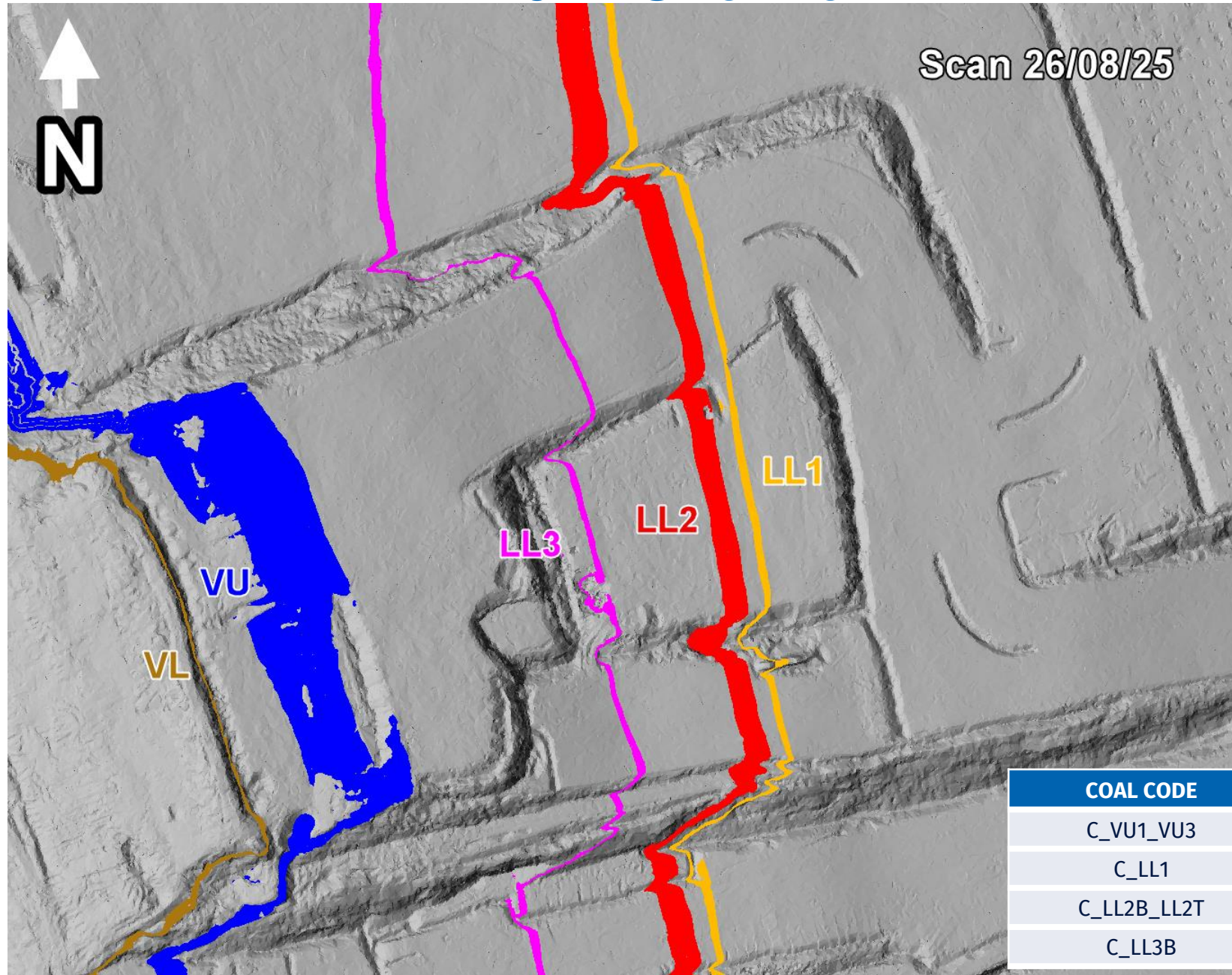
Continue pulling down VL15 coal with 80t digger

Have received good feedback so far from client on the coal prep of VL15, thanks for your efforts.



Afternoon 31/08/2025

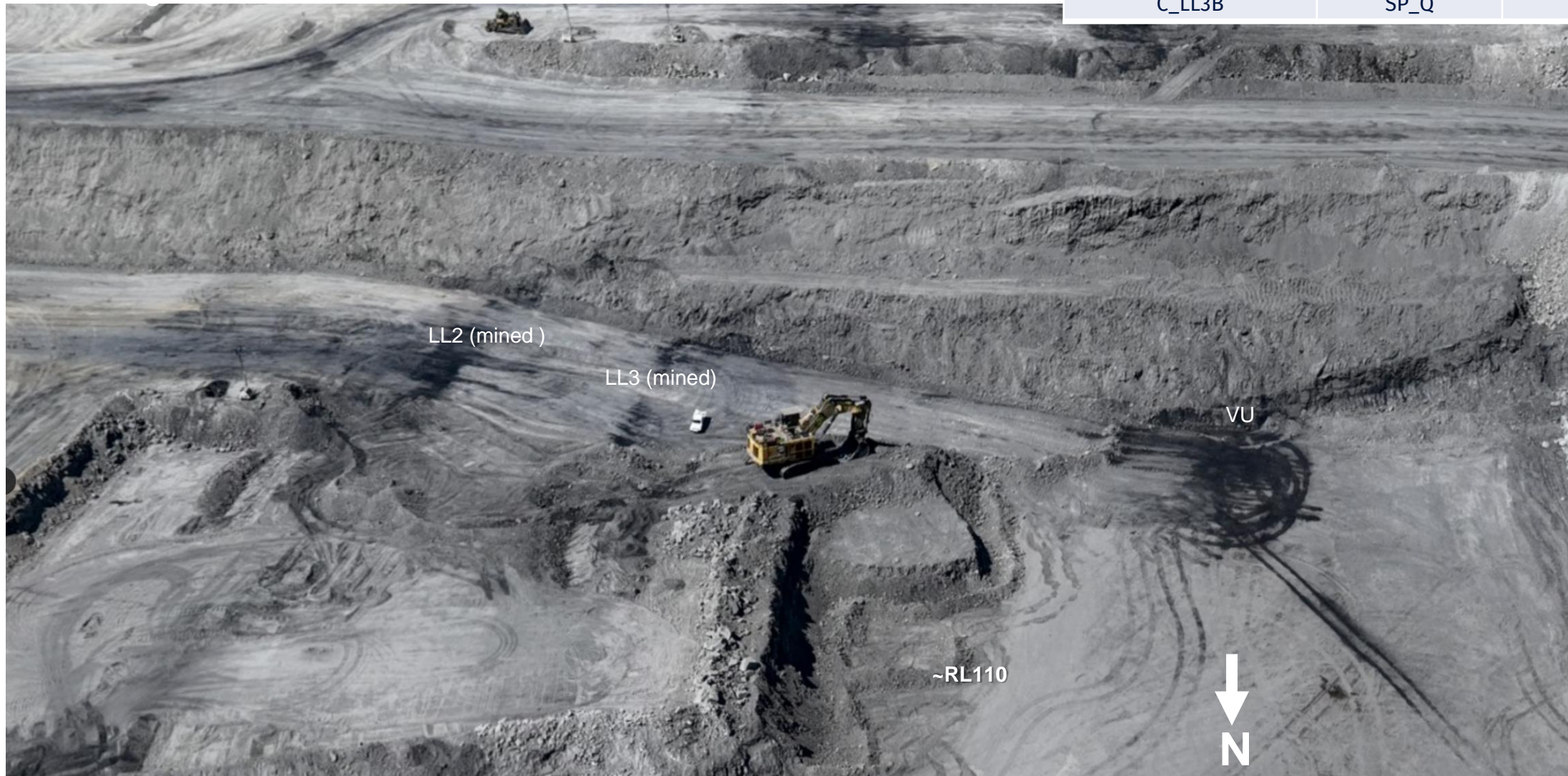
T04 - Overview



COAL CODE	STOCKPILE	COMMENTS
C_VU1_VU3	SP_O	
C_LL1	SP_B	Thin seam – take care when mining
C_LL2B_LL2T	SP_P	
C_LL3B	SP_Q	

T04/S01

COAL CODE	STOCKPILE	COMMENTS
C_VU1_VU3	SP_O	
C_LL1	SP_B	Thin seam – take care when mining
C_LL2B_LL2T	SP_P	
C_LL3B	SP_Q	



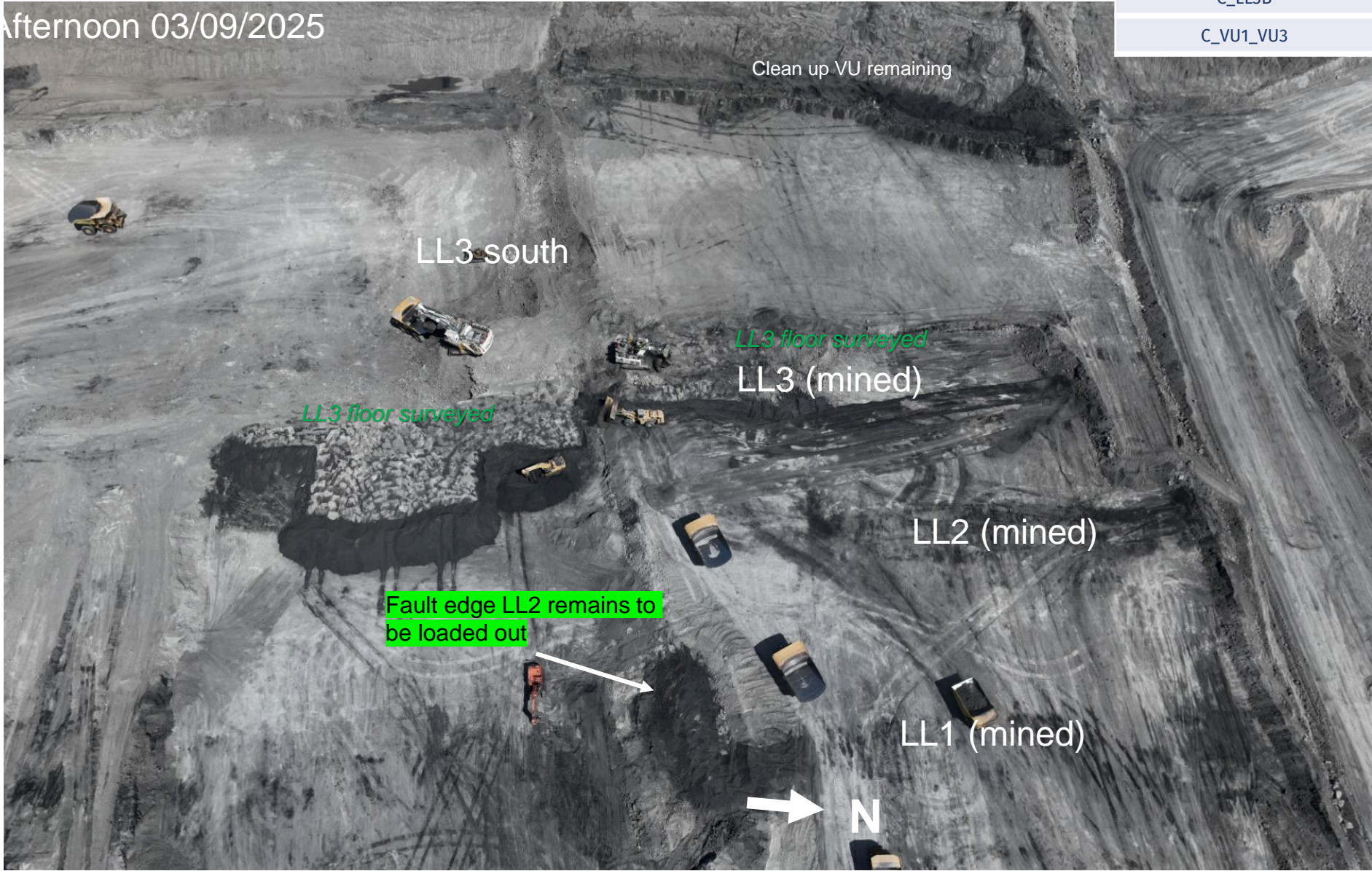
VL1 Trial postponed. Bulk mine VL1

COAL CODE	STOCKPILE	COMMENTS
C_VU1_VU3	SP_O	
C_LL1	SP_B	Thin seam – take care when mining
C_LL2B_LL2T	SP_P	
C_LL3B	SP_Q	
C_VL1	VL_Pad	Bulk VL1 to VL Pad



T05/S01 Ramp 6 De-Stack

Afternoon 03/09/2025



COAL CODE	STOCKPILE	COMMENTS
C_LL1	SP_B	Thin seam – take care when mining
C_LL2T_LL2B	SP_D	
C_LL3B	SP_R	Eastern Side
C_VU1_VU3	SP_A	

T05/S02

Afternoon 31/08/2025

Currently uncovering marked up LL3

LL3

LL1 and LL2 mined out

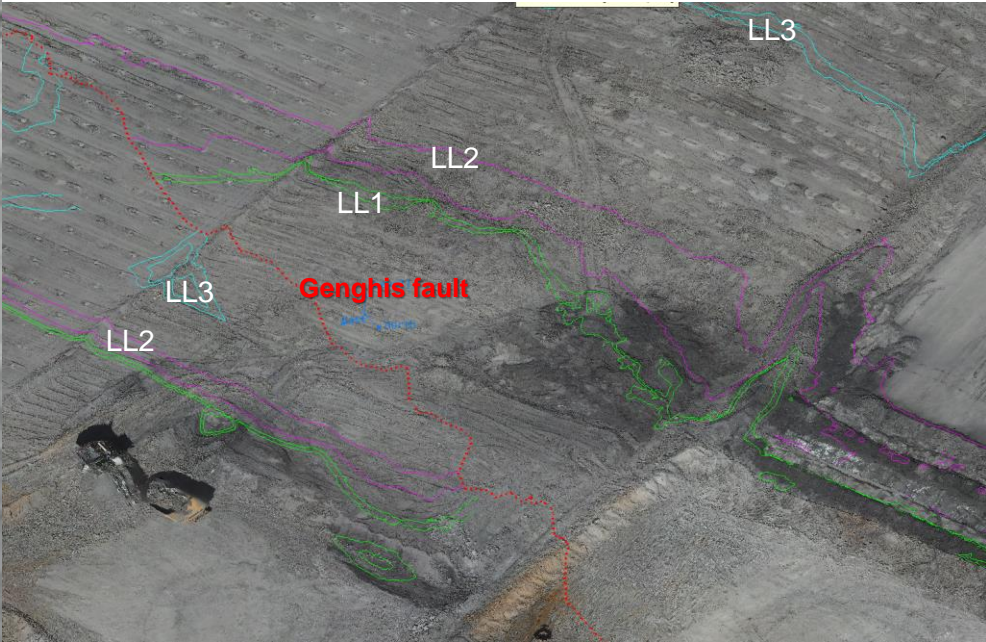
Genghis fault

LL3 (mined)

LL2 (mined)

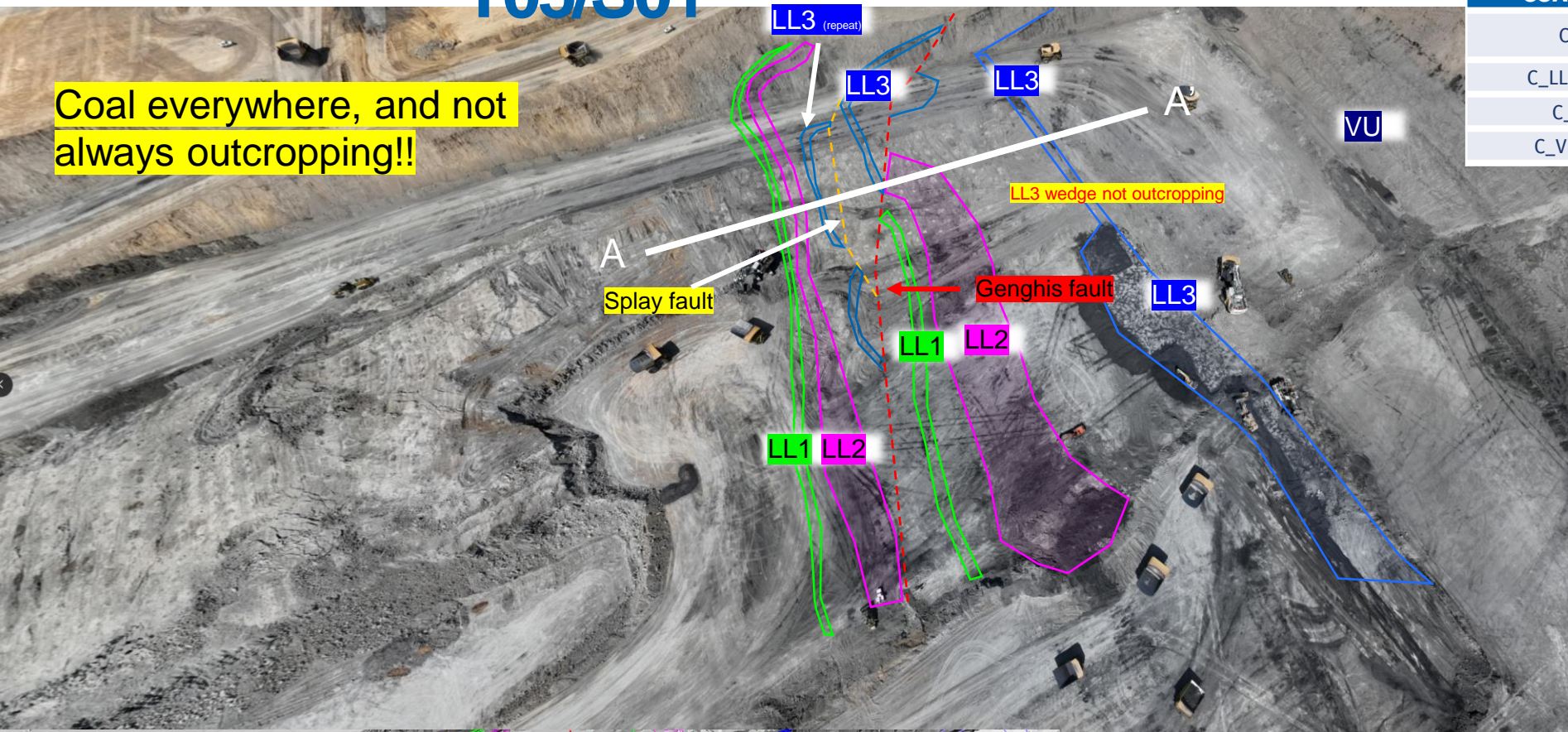
Coal near vertical

COAL CODE	STOCKPILE	COMMENTS
C_LL1	SP_B (east)	Thin seam – take care when mining
C_LL2T_LL2B	SP_N	Stockpile on SP-N
C_LL3B	SP_R	Eastern Side
C_VU1_VU3	SP_A	

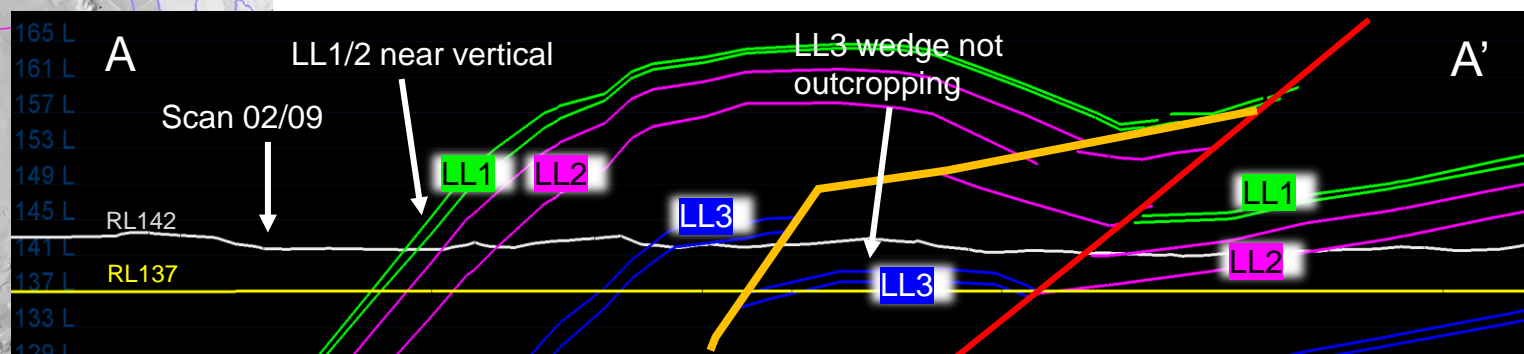
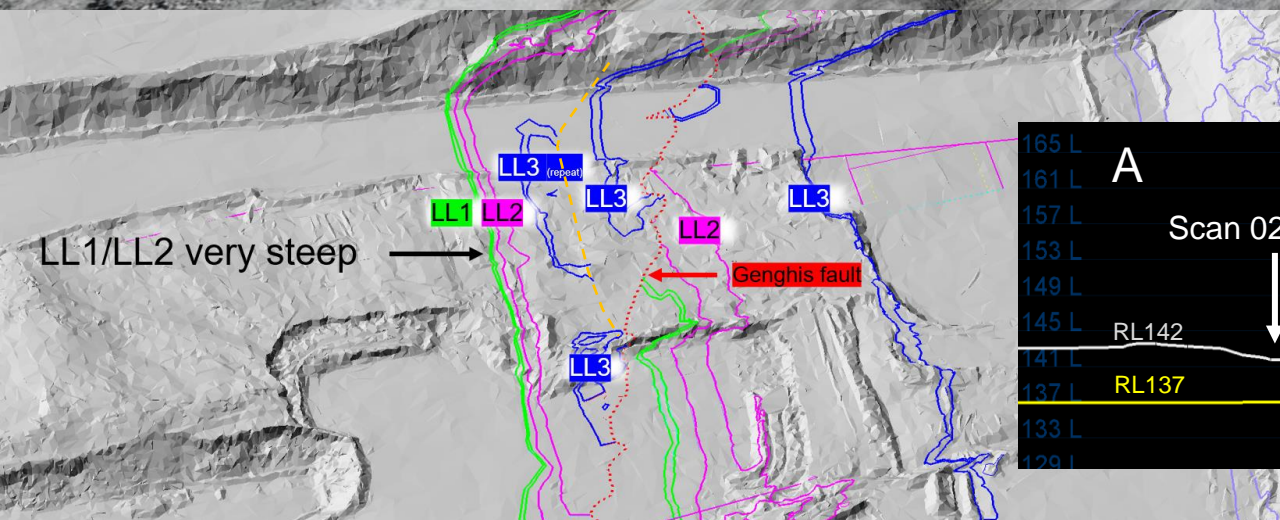


T05/S01

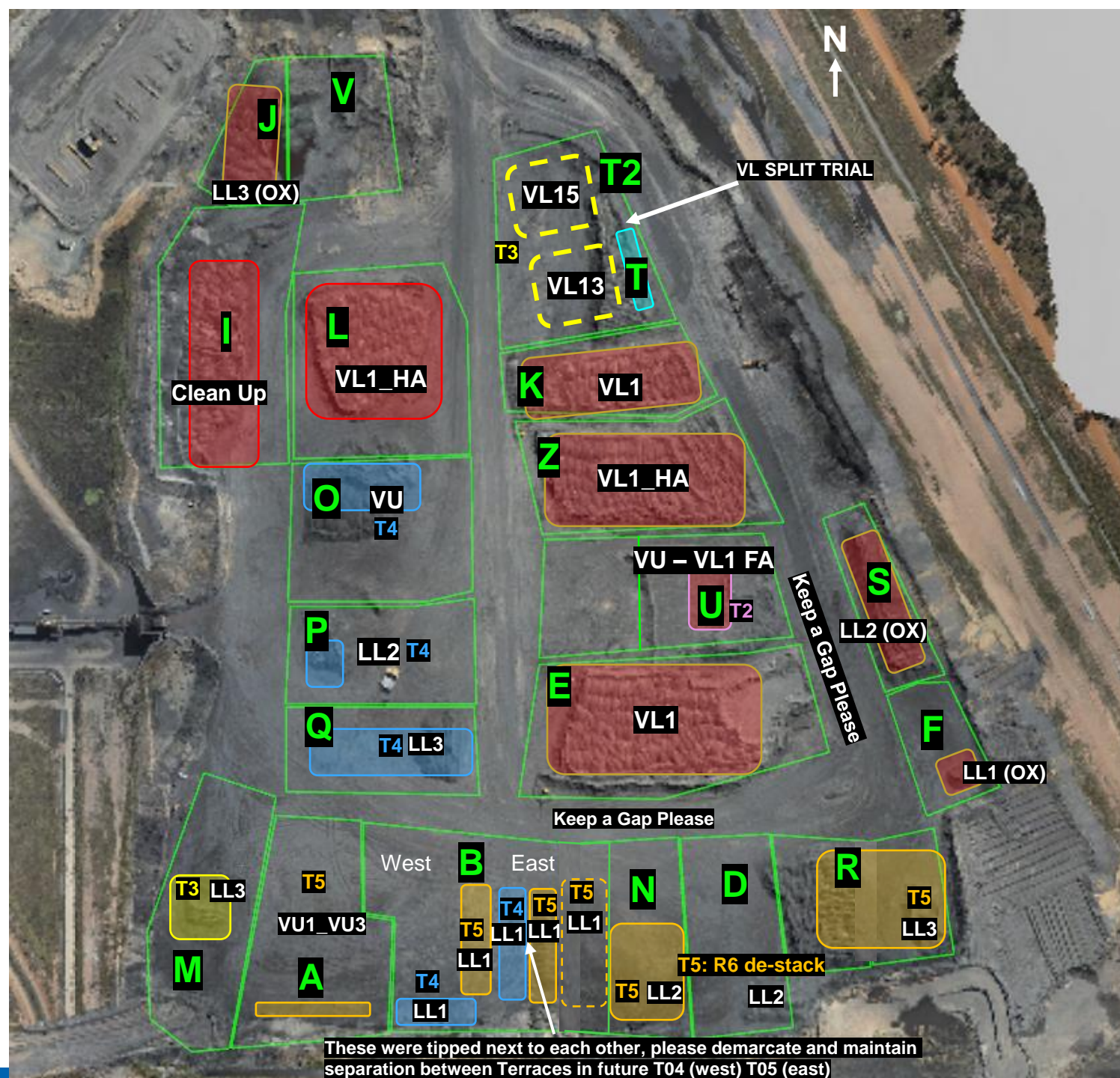
Coal everywhere, and not always outcropping!!



COAL CODE	STOCKPILE	COMMENTS
C_LL1	SP_B (east)	Thin seam – take care when mining
C_LL2T_LL2B	SP_N	Stockpile on SP-N
C_LL3B	SP_R	Eastern Side
C_VU1_VU3	SP_A	



ROM



THIASS

Tip Stockpiles South to North

ROM

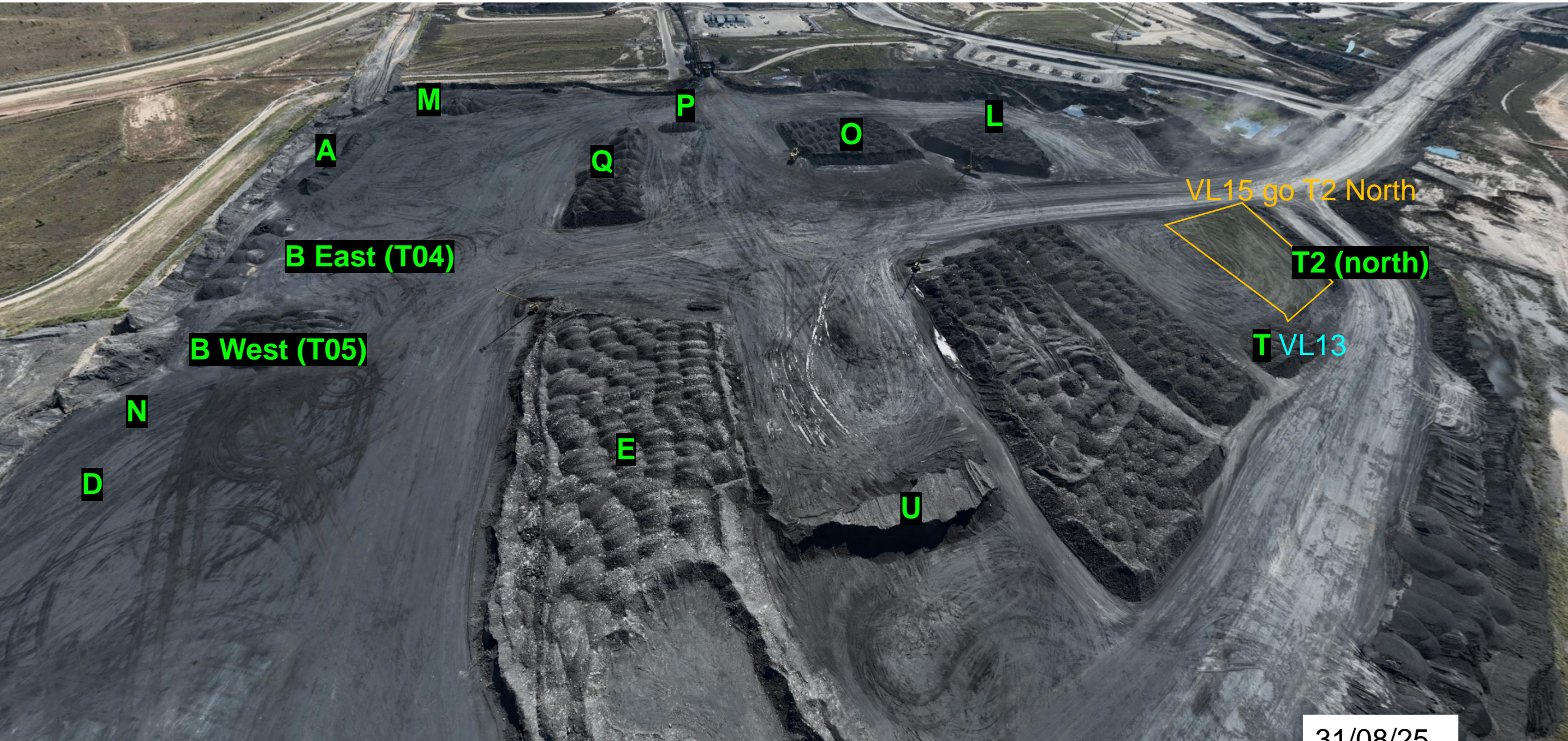
VL1 ROM Pad

VL11_VL12 – VL Trial – keep separate and maintain access

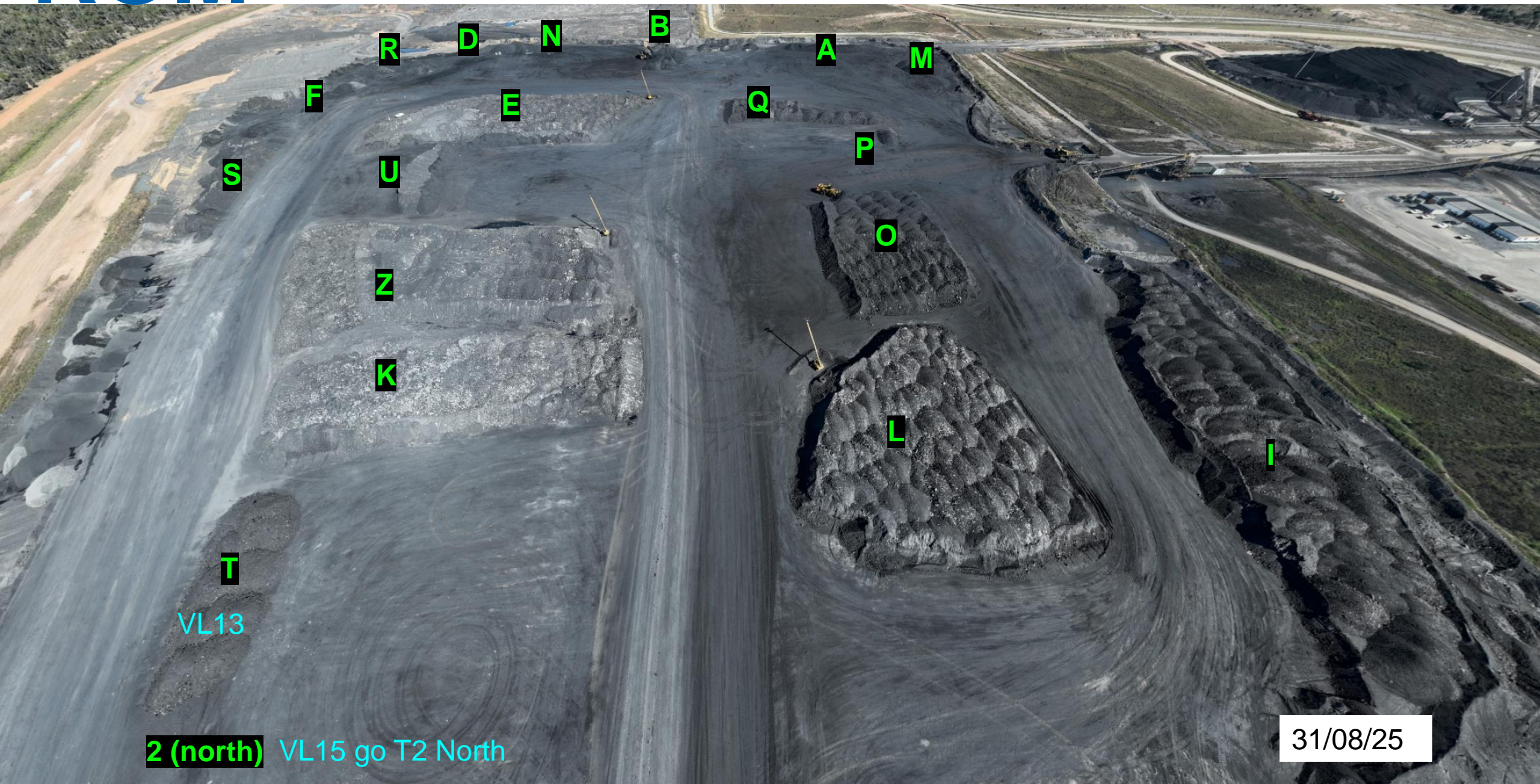


31/08/25

ROM



ROM



2 (north) VL15 go T2 North

31/08/25

CHPP Coal Feed Sequence

Comments

Currently on blend 3 - Plant Shutdown from 3am 03/09 until 19:00 4/09

CHPP shutdown 03:00 03/09 . Can we plaese request intruck Blending on Blend 3 please.

Communicate any direct feed start and finish time to CHPP control.

	Blends								
	Feed 1	Feed 2	Feed 3	Ratio	ROM Loaders	ROM Trucks	Direct Feed	Comments	active
VL TRIAL	SP-T			Straight			Yes	VL Trial Blend (VL13 and VL15)	
Blend 2	SP-O	SP-N		1:1	1	2	No	1 x VU (T04S01) : 1 x LL2 (T05S01)	
Blend 3	SP-N	SP-B	SP-Q	1:1:1	1	2	No	1 x LL2 (T05S01) : 1 x LL1 (T05S02) : 1 x LL3 (T04S01)	x
Blend 4	SP-O	SP-D		1:1			Yes	1 x VU (T04S01) : 1 x LL2 (T05S01)	
Blend 5									
Blend 6									
Wet weather	SP-O			Straight			NO	VU (T04S01)	

	Plant Settings															active
				Primary DMC	Sec DMC	Reflux	Planned Feed Ash	Gate 401	Coke Stacker	Thermal Stacker	Primary Yield	Secondary Yield	Primary Ash	Primary Moisture	Expected CSN	
VL TRIAL				1.35				To Primary	South		20%	20%	10.4%	11.0%	8	
Blend 2				1.4				To Primary			64%	15%	10.4%	11.0%	6	
Blend 3				1.4				To Primary			53%	16%	10.4%	11.0%	9	
Blend 4				1.4				To Primary			64%	15%	10.4%	11.0%	6	
Blend 5																
Blend 6																
Wet weather				1.41							63%	15%	10.4%	11.0%	6	

