

# ODC Daily Coaling Plan

08/09/2025

Geologist Contact: 0473 223 132



# Coal Locations

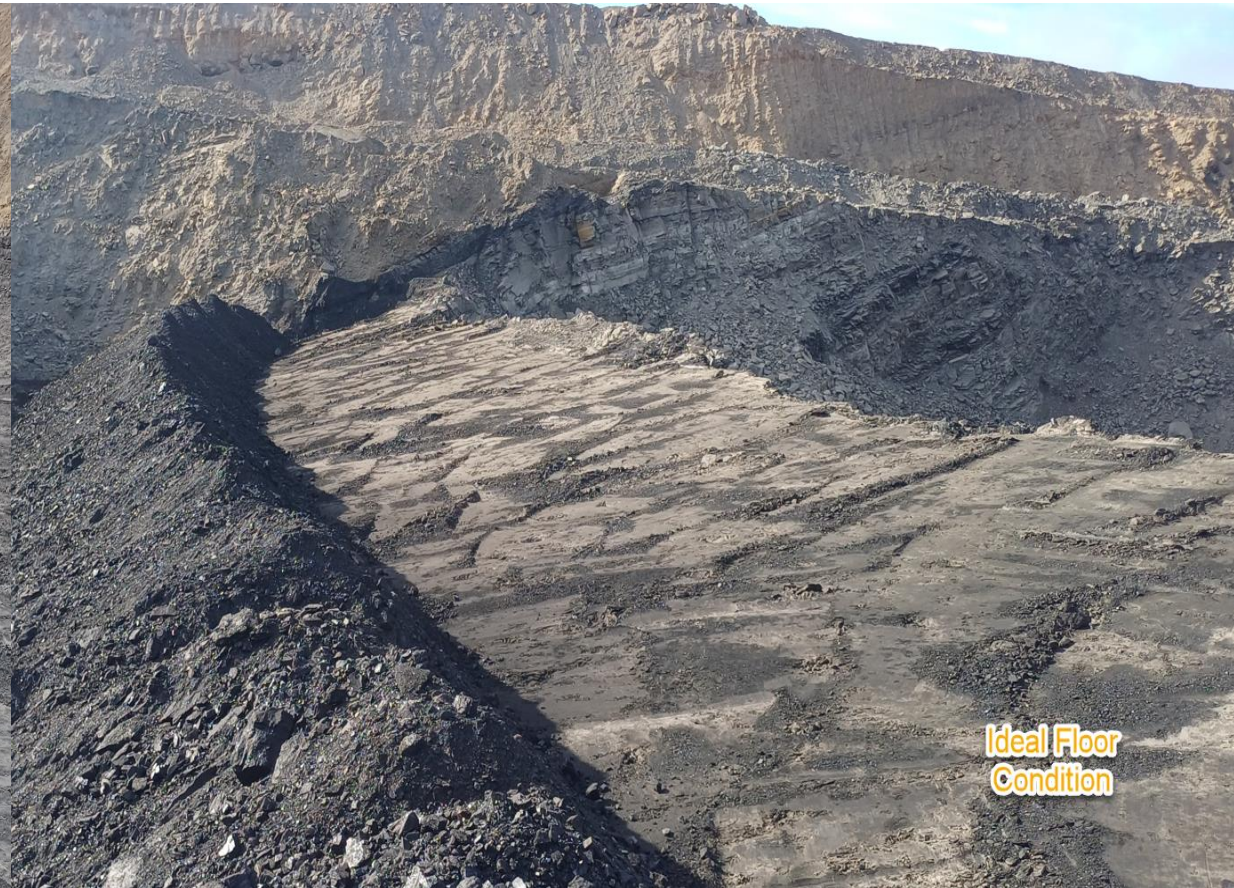
Location	Coal Type	Destination	Comments
T03	C_VU1_VU3	SP_N	
	C_LL1	SP_B	Thin seam – take care when mining Tip Stockpile South to North
	C_LL2T_LL2B		
	C_LL3B	SP_M	Thin seam – take care when mining.
T04	C_LL1	SP_B (west)	Thin seam – take care when mining
	C_LL2T_LL2B	SP_P	
	C_LL3B	SP_Q	
	C_VU1_VU3		
T05	C_LL1	SP_B (east)	Thin seam – take care when mining
	C_LL2T_LL2B	SP-N	
	C_LL3B	SP-R	Thin seam – take care when mining
	C_VU1_VU3	SP_O	

NON-  
Trial  
VL 1 to  
VL\_PAD

Location	Coal Type	Destination	Comments
T03/04 – VL Trial	C_VL11_VL12	VL_Pad	North-Eastern Section (Separate from other VL)
	C_VL13	SP_T	Southern End
	C_VL15	SP_T2	Northern End



# Ideal Roof and Floor Conditions





# T05/S01



COAL CODE	STOCKPILE	COMMENTS
C_LL1	SP_B (east)	Thin seam – take care when mining
C_LL2T_LL2B	SP_N	Stockpile on SP-N
C_LL3B	SP_R	Eastern Side
C_VU1_VU3	SP_O	



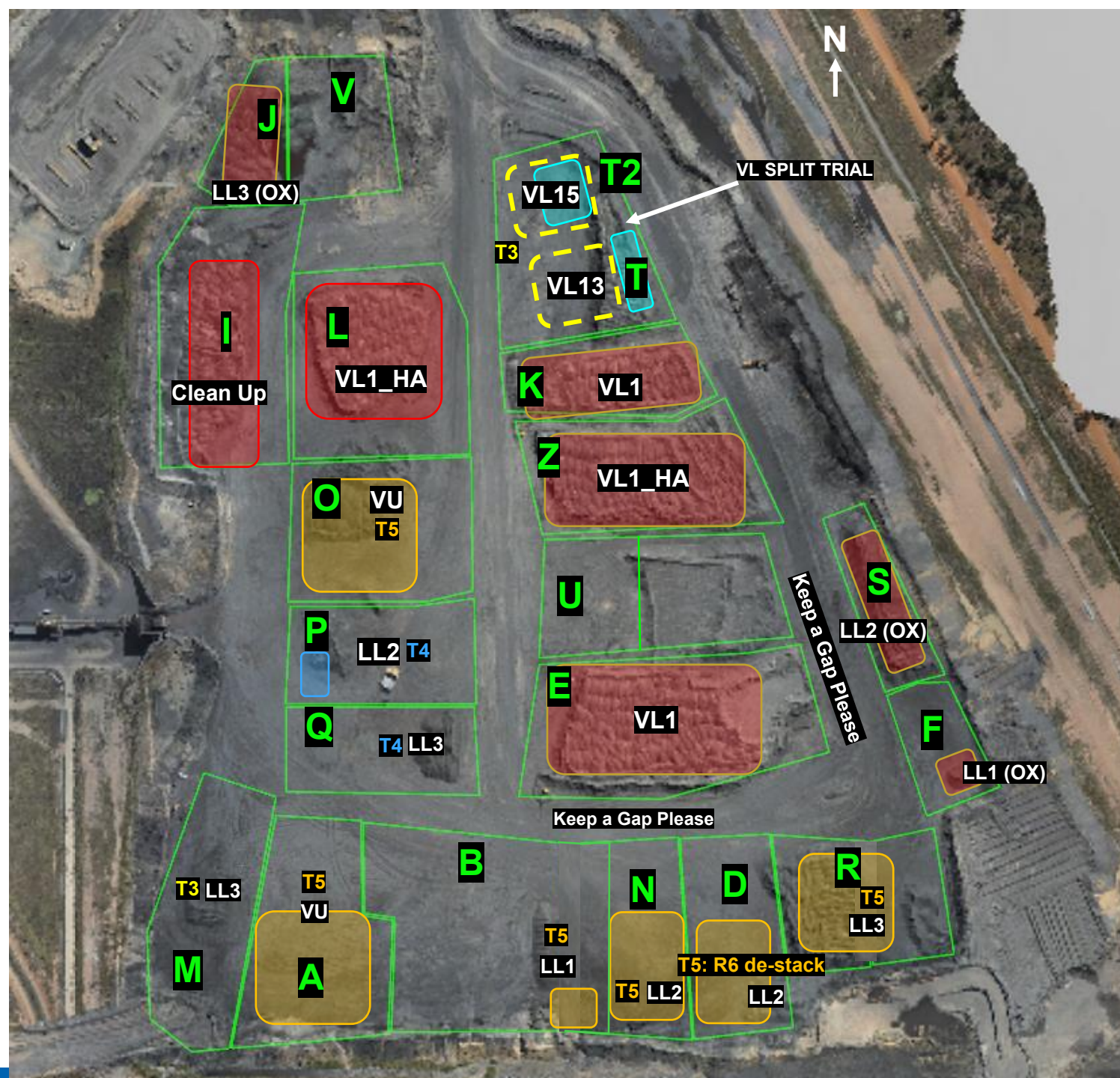
# T05/S02

COAL CODE	STOCKPILE	COMMENTS
C_LL1	SP_B (east)	Thin seam – take care when mining
C_LL2T_LL2B	SP_N	
C_LL3B	SP_R	
C_VU1_VU3	SP_O	





# ROM



**THIASS**

Tip Stockpiles South to North



# ROM

VL1 ROM Pad

VL11\_VL12 – VL Trial – keep separate and maintain access



31/08/25



Communicate any direct feed start and finish time to CHPP control.

Currently running Blend 2

**Once Stockpile A and O are exhausted change to Blend 4**

**Once Stockpile D is exhausted change to Blend 5**

[illegible]



