

ODC Daily Coaling Plan

09/09/2025

Geologist Contact: 0473 223 132



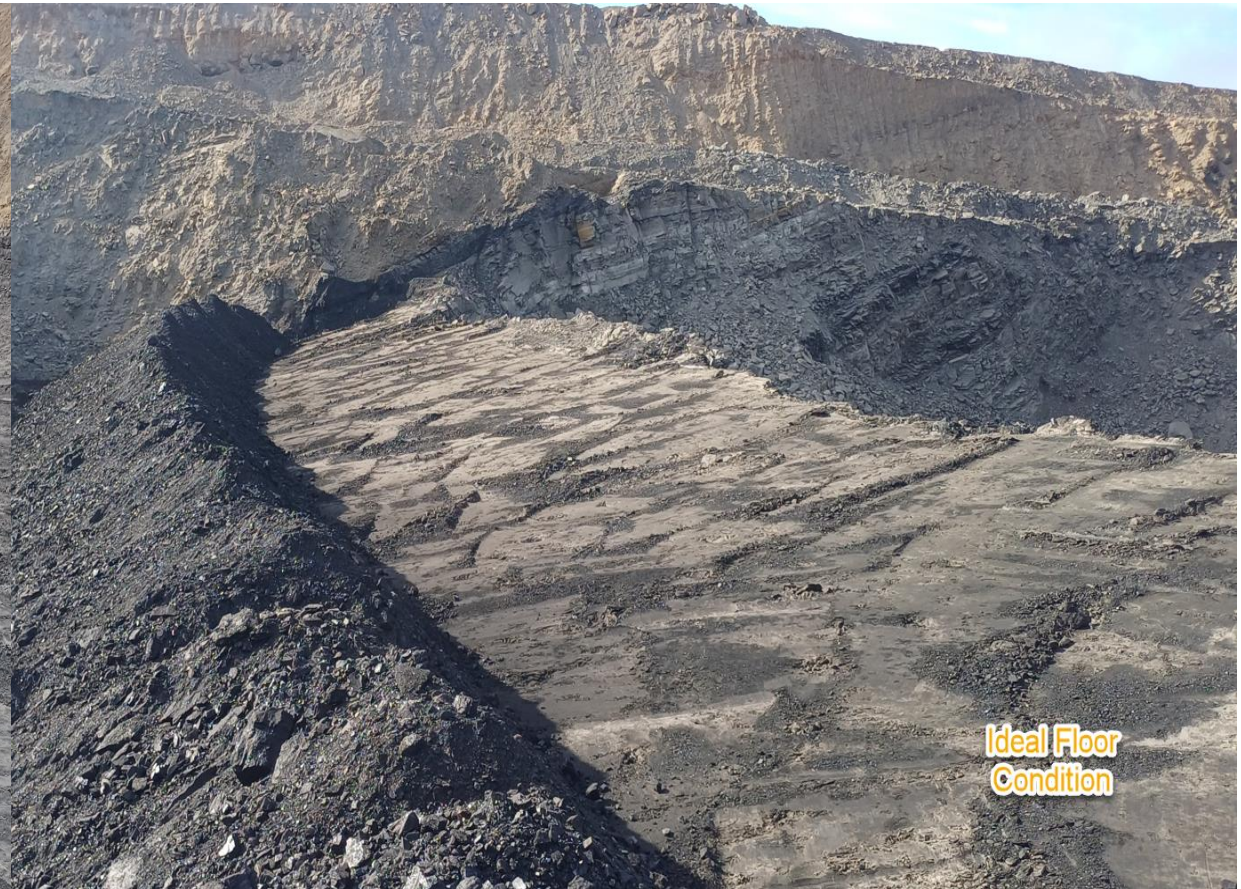
Coal Locations

Location	Coal Type	Destination	Comments
T03	C_VU1_VU3	SP_N	
	C_LL1	SP_B	Thin seam – take care when mining Tip Stockpile South to North
	C_LL2T_LL2B		
	C_LL3B	SP_M	Thin seam – take care when mining.
T04	C_LL1	SP_B (west)	Thin seam – take care when mining
	C_LL2T_LL2B	SP_P	
	C_LL3B	SP_Q	
	C_VU1_VU3		
T05	C_LL1	SP_B (east)	Thin seam – take care when mining
	C_LL2T_LL2B	SP-N	
	C_LL3B	SP-R	Thin seam – take care when mining
	C_VU1_VU3	SP_O	

NON-
Trial
VL1 to
VL_PAD

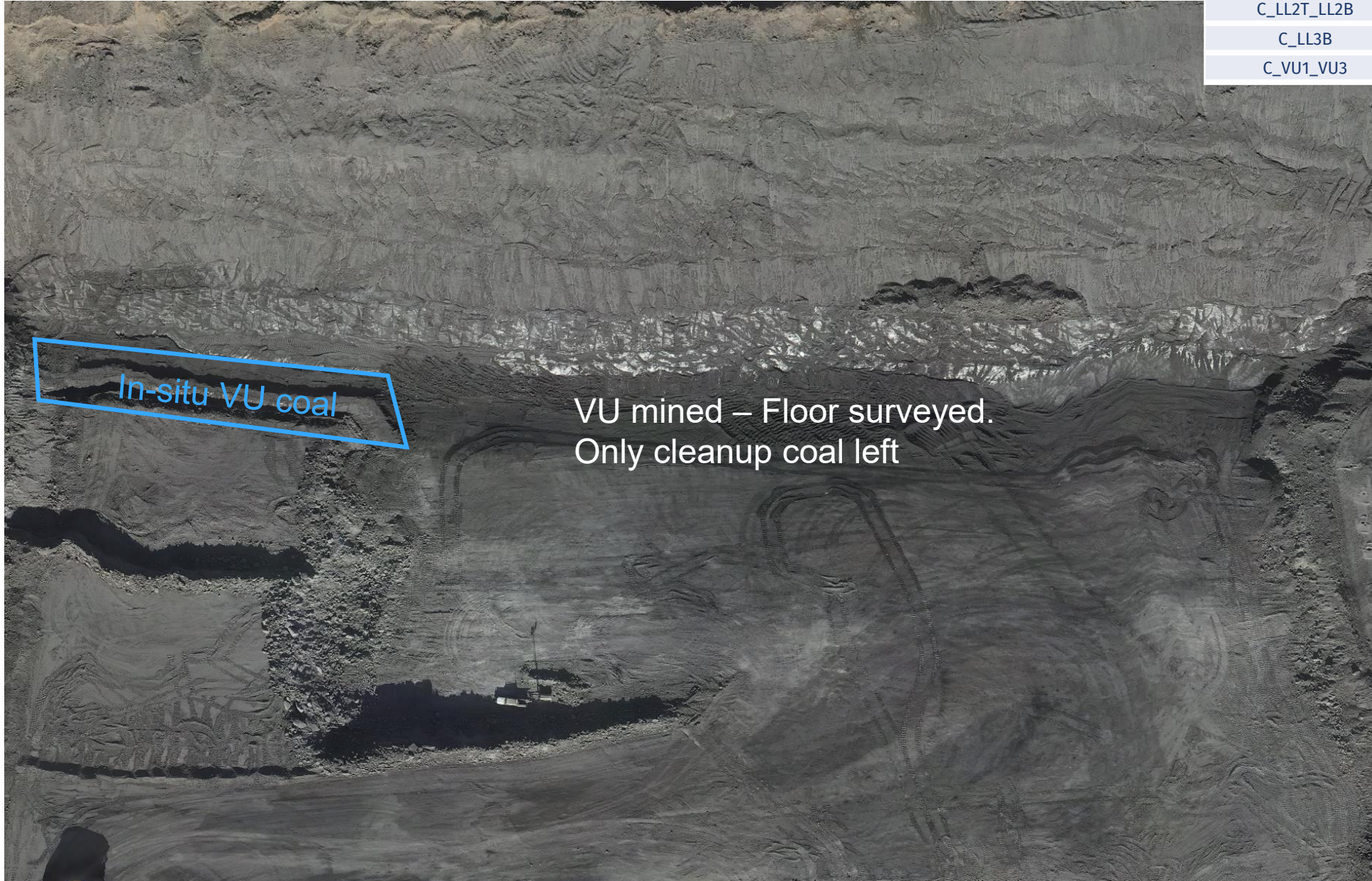
Location	Coal Type	Destination	Comments
T03/04 – VL Trial	C_VL11_VL12	VL_Pad	North-Eastern Section (Separate from other VL)
	C_VL13	SP_T	Southern End
	C_VL15	SP_T2	Northern End

Ideal Roof and Floor Conditions

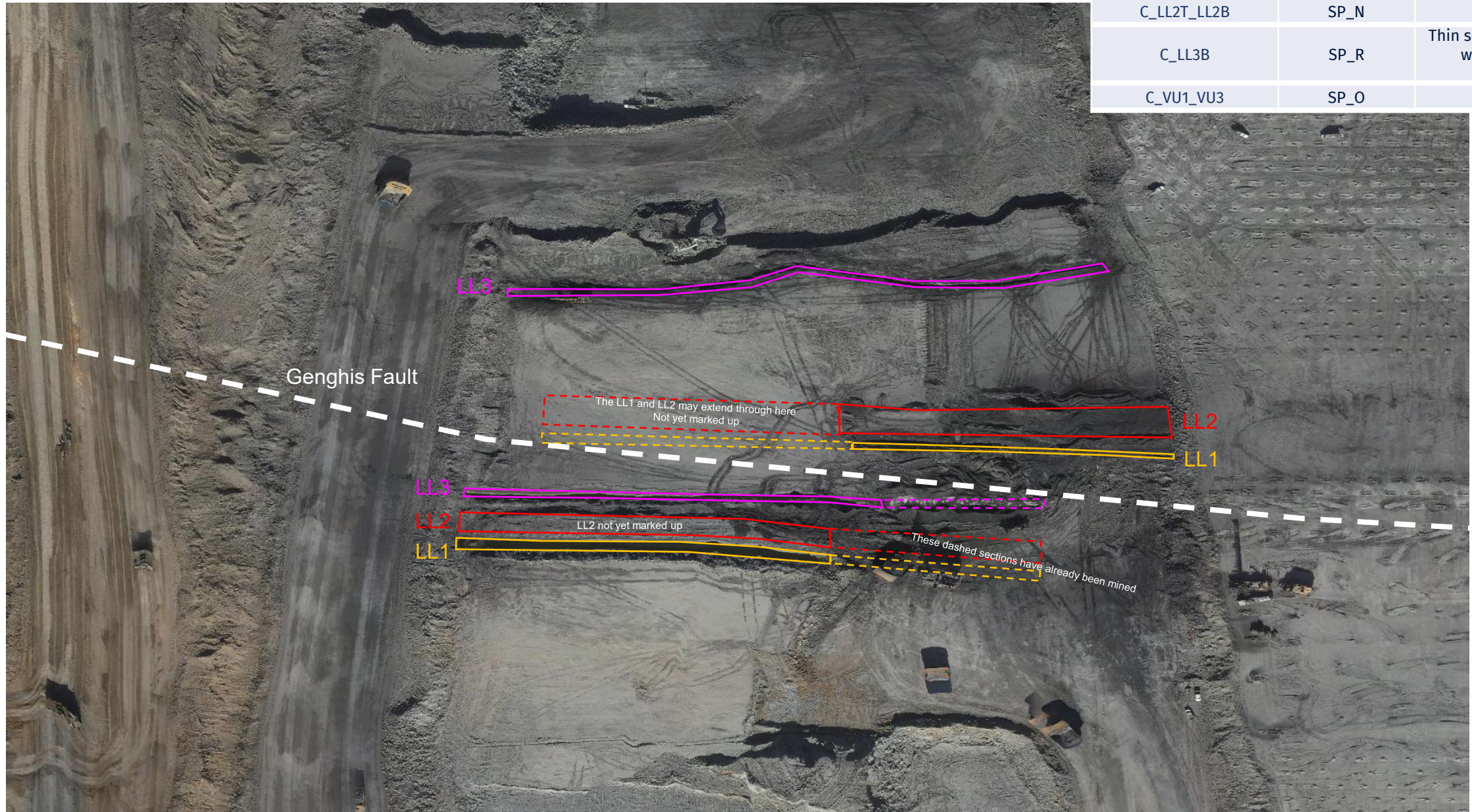


T05/S01

COAL CODE	STOCKPILE	COMMENTS
C_LL1	SP_B (east)	Thin seam – take care when mining
C_LL2T_LL2B	SP_N	Stockpile on SP-N
C_LL3B	SP_R	Eastern Side
C_VU1_VU3	SP_O	

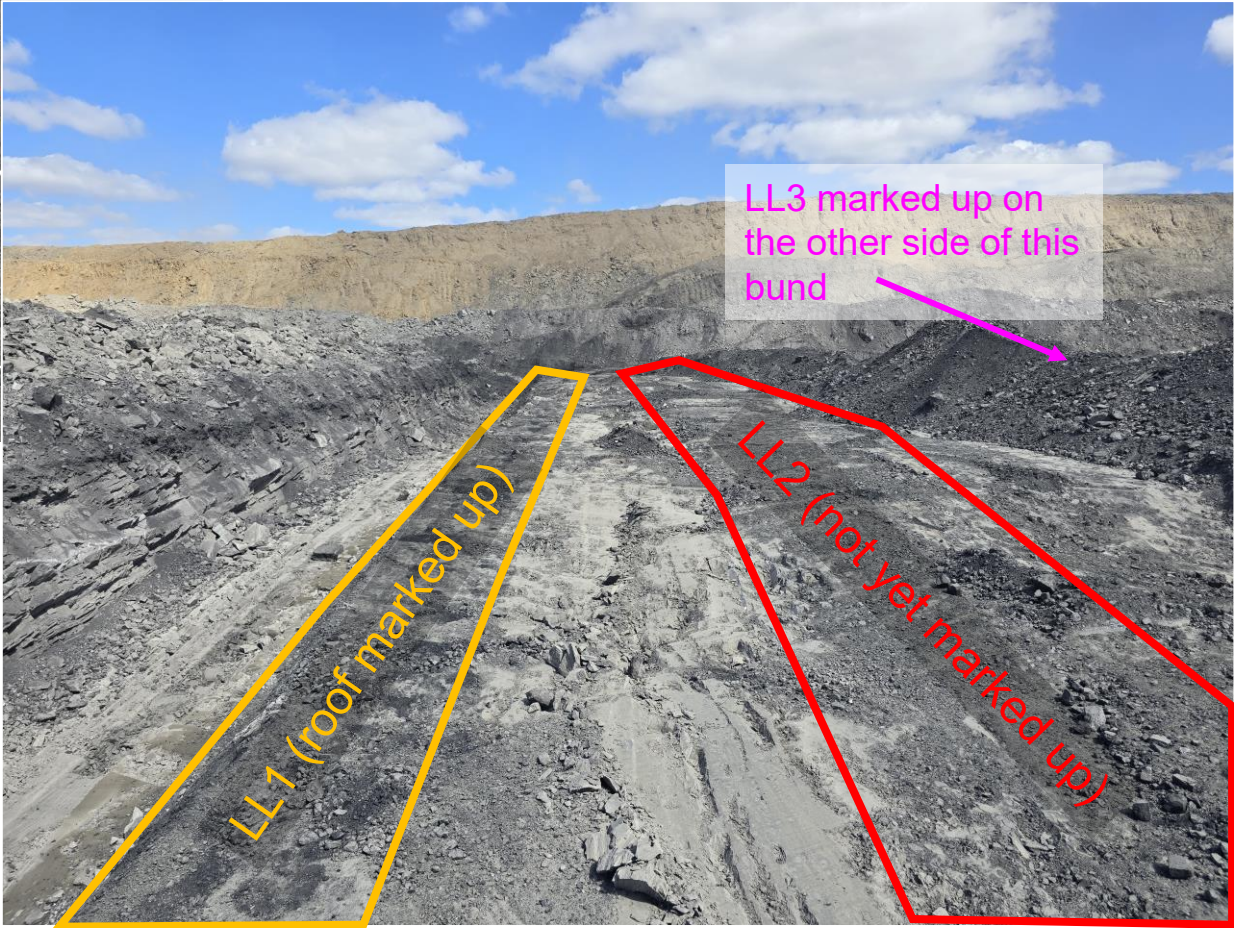


COAL CODE	STOCKPILE	COMMENTS
C_LL1	SP_B (east)	Thin seam – take care when mining
C_LL2T_LL2B	SP_N	
C_LL3B	SP_R	Thin seam – take care when mining
C_VU1_VU3	SP_O	



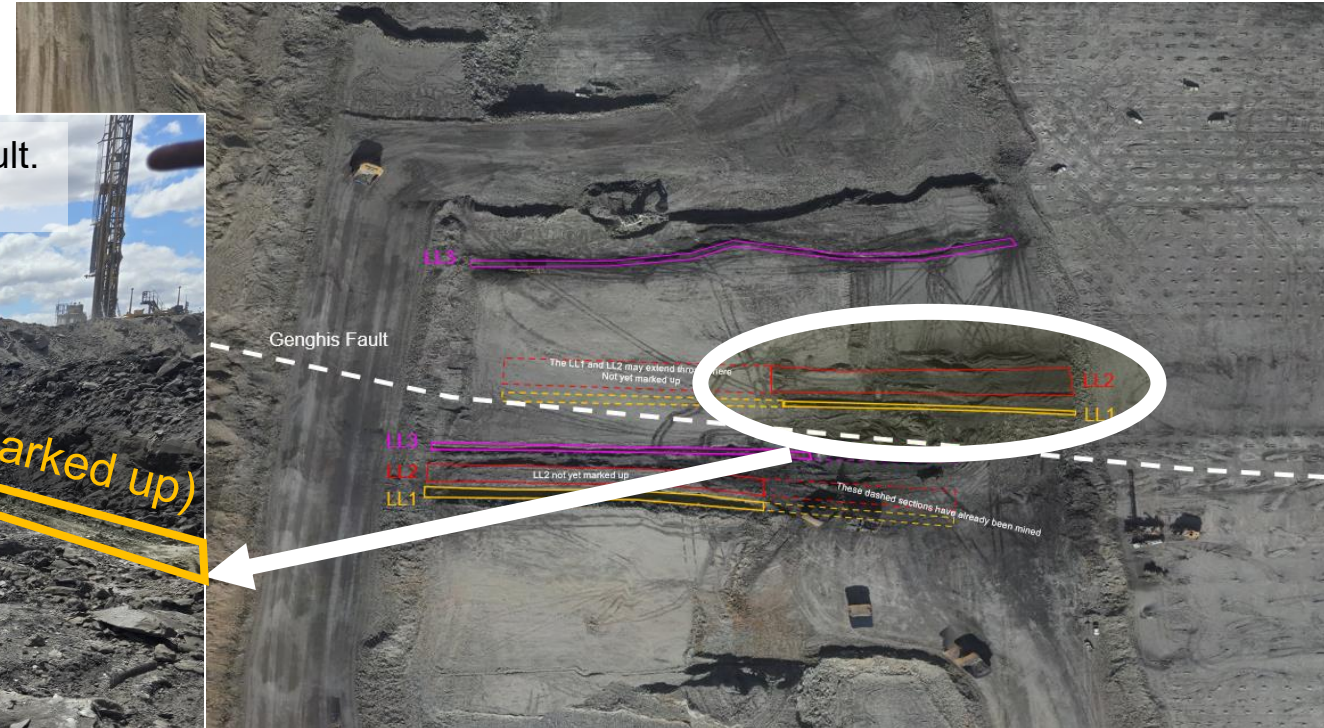
T05/S02

COAL CODE	STOCKPILE	COMMENTS
C_LL1	SP_B (east)	Thin seam – take care when mining
C_LL2T_LL2B	SP_N	
C_LL3B	SP_R	Thin seam – take care when mining
C_VU1_VU3	SP_O	

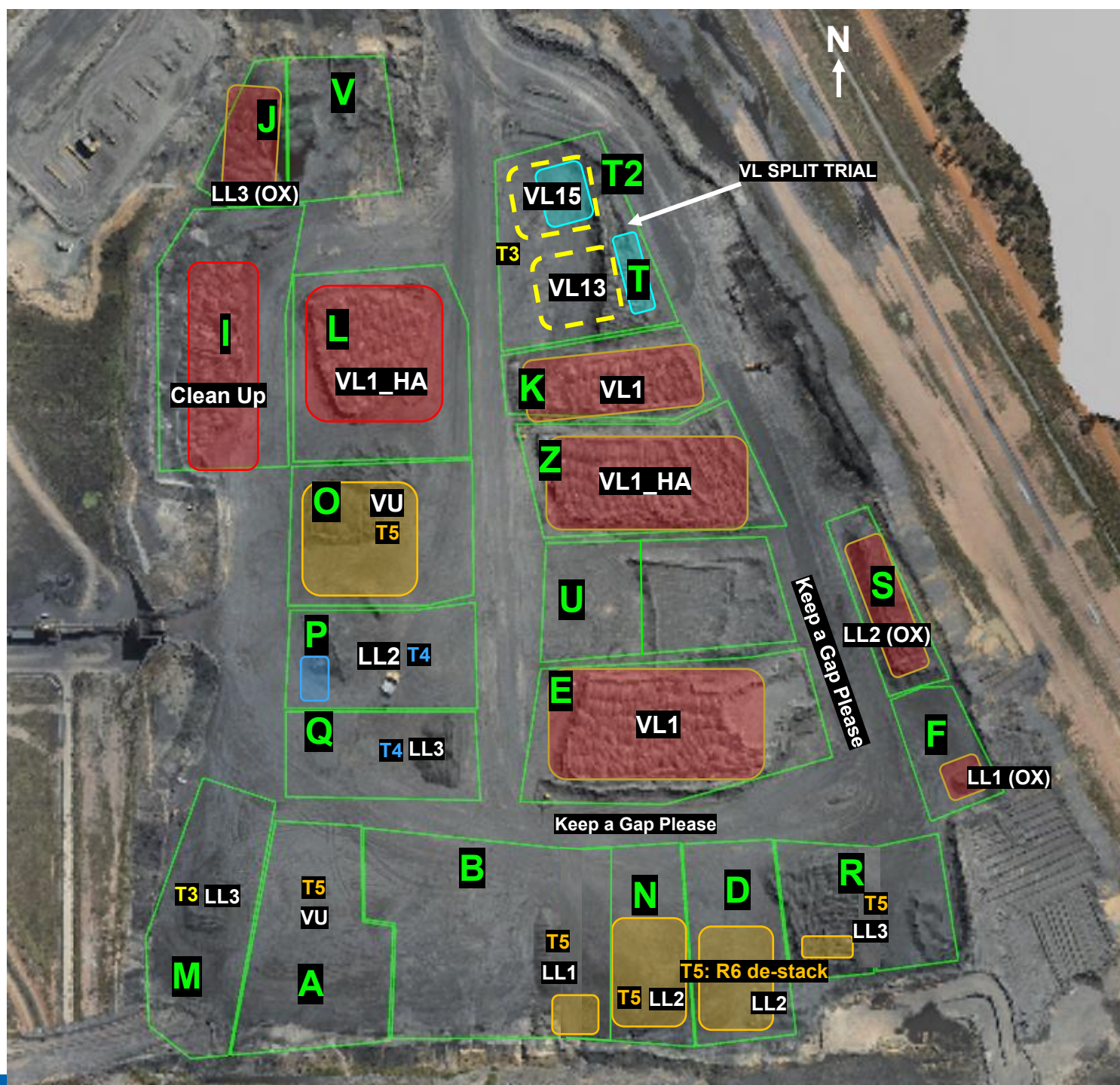


COAL CODE	STOCKPILE	COMMENTS
C_LL1	SP_B (east)	Thin seam – take care when mining
C_LL2T_LL2B	SP_N	
C_LL3B	SP_R	Thin seam – take care when mining
C_VU1_VU3	SP_O	

Note, the LL1 is very thin and has been displaced by the fault. The LL1 may merge with the LL2 in some places.



ROM

**THIESS**

Tip Stockpiles South to North

ROM

VL1 ROM Pad

VL11_VL12 – VL Trial – keep separate and maintain access



31/08/25

THIASS

CHPP Coal Feed Sequence

Communicate any direct feed start and finish time to CHPP control.

Comments

Currently running Blend 5 - Change to VL TRIAL at 15:00 09/09

Once VL trial completed change to Blend 6

		Blends											
	Feed 1	Feed 2	Feed 3	Ratio	ROM Loaders	ROM Trucks	Direct Feed	Comments		active			
VL TRIAL	SP-T2			Straight			Yes	VL Trial Blend (VL15)					
Blend 2	SP-A/O	SP-R		1:1				1 x VU (T05S01) : 1 x LL3 (T05S02)					
Blend 3	SP-A/O	SP-D	SP-S	1:1:1				1 x VU (T05S01) : 1 x LL2 (T05S01) :1 x LL2 (ok T04S01)					
Blend 4	SP-D	SP-I		2:1				2 x LL2 (T05S01) : 1 x Clean Up Coal					
Blend 5	SP-N	SP-I		2:1				2 x LL2 (T05S01) : 1 x Clean Up Coal		X			
Blend 6	SP-A/O	SP-N	SP-S	1:1:1				1 x VU (T05S01) : 1 x LL2 (T05S01) :1 x LL2 (ok T04S01)					
Wet weather													
		Plant Settings											
	Primary DMC	Sec DMC	Reflux	Planned Feed Ash	Gate 401	Coke Stacker	Thermal Stacker	Primary Yield	Secondary Yield	Primary Ash	Primary Moisture	Expected CSN	active
VL TRIAL	1.35				To Primary	South		20%	20%	10.4%	11.0%	8	
Blend 2	1.41				To Primary			48%	18%	10.4%	11.0%	8	
Blend 3	1.4				To Primary	South		51%	14%	10.4%	11.0%	6	
Blend 4	1.4				To Primary			51%	14%	10.4%	11.0%	6	
Blend 5	1.4				To Primary			51%	14%	10.4%	11.0%	6	x
Blend 6	1.4				To Primary	South		51%	14%	10.4%	11.0%	6	
Wet weather													

