

ODC Daily Coaling Plan

12/09/2025

Geologist Contact: 0473 223 132



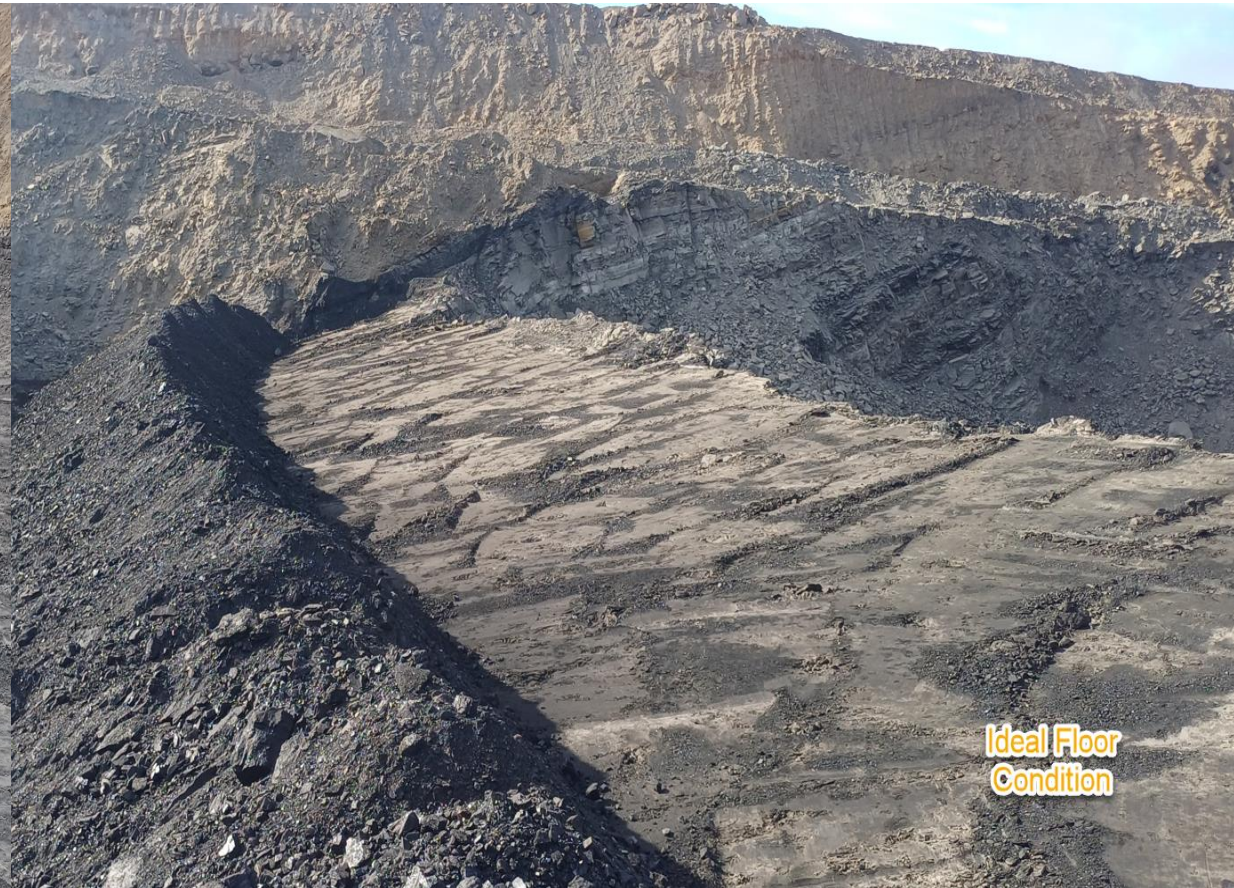
Coal Locations

Location	Coal Type	Destination	Comments
T03	C_VU1_VU3	SP_F (north)	Stockpile separately to the LL1 OX
	C_LL1	SP_B	Thin seam – take care when mining Tip Stockpile South to North
	C_LL2T_LL2B		
	C_LL3B	SP_M	Thin seam – take care when mining.
T04	C_LL1	SP_B (west)	Thin seam – take care when mining
	C_LL2T_LL2B	SP_P	
	C_LL3B	SP_A	
	C_VU1_VU3		
T05	C_LL1	SP_B (east)	Thin seam – take care when mining
	C_LL2T_LL2B	SP-C	
	C_LL3B	SP-R	Thin seam – take care when mining
	C_VU1_VU3	SP_O	

Location	Coal Type	Destination	Comments
T03/04 – VL Trial	C_VL11_VL12	VL_Pad	North-Eastern Section (Separate from other VL)
	C_VL13	SP_T	Southern End
	C_VL15	SP_T2	Northern End

NON-Trial
VL1 to
VL_PAD

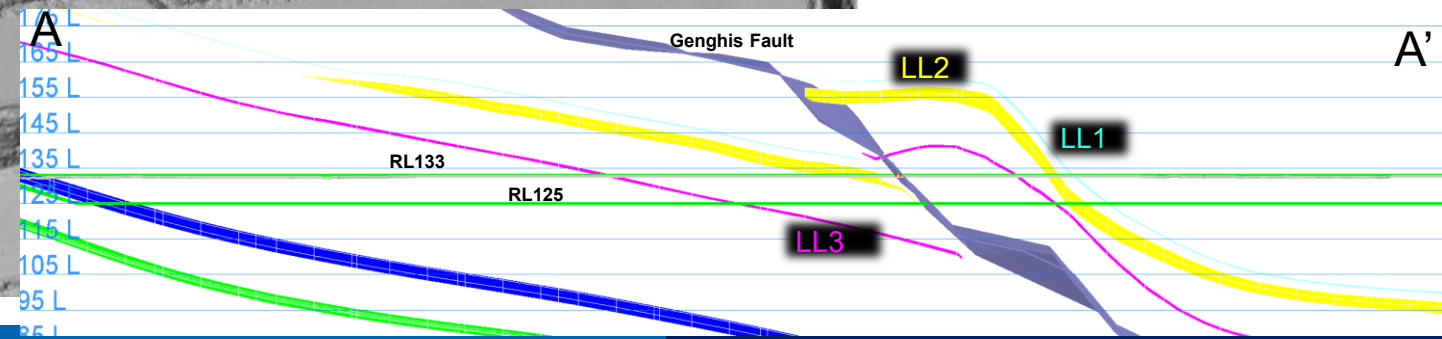
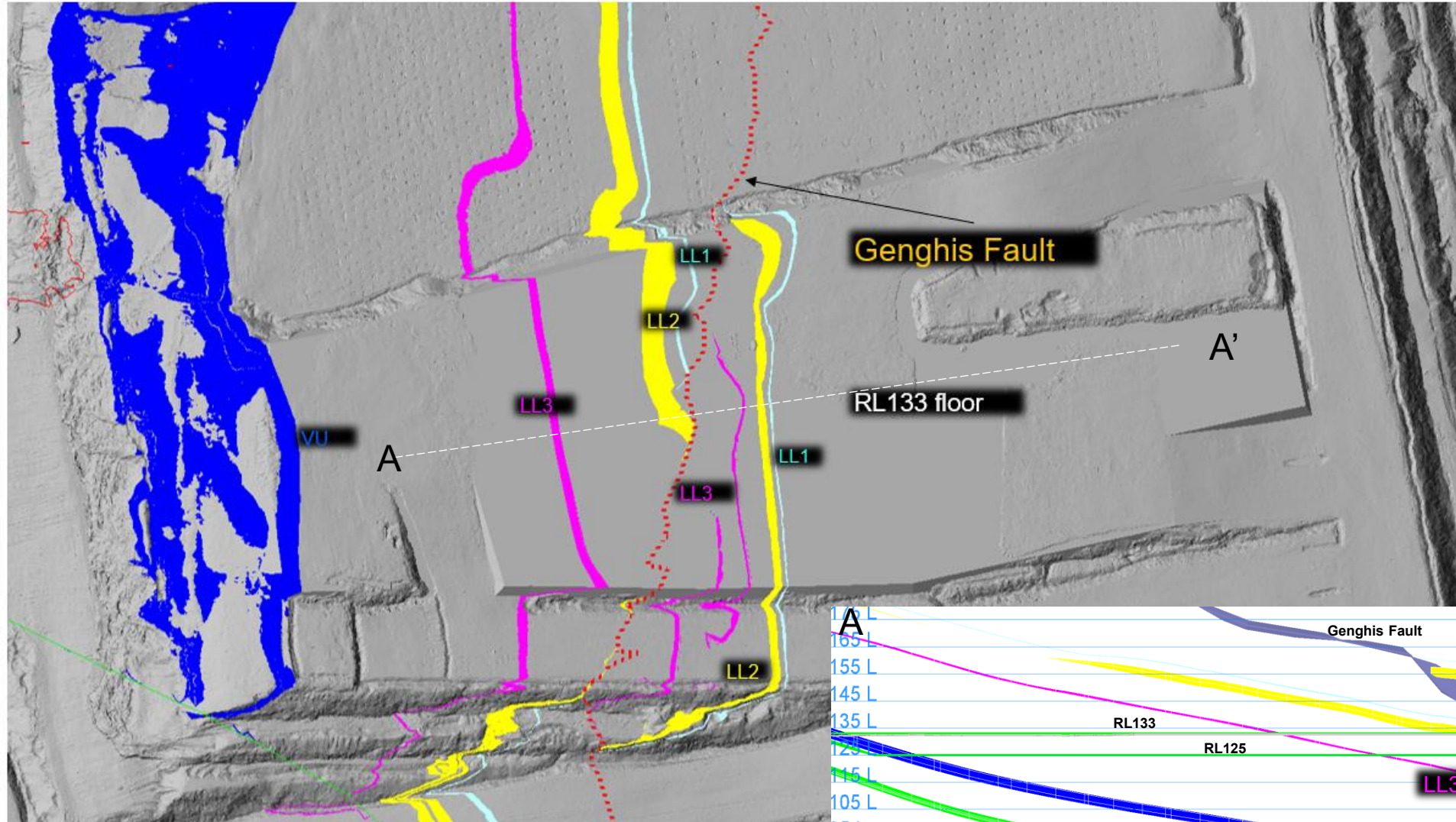
Ideal Roof and Floor Conditions



T05/S02

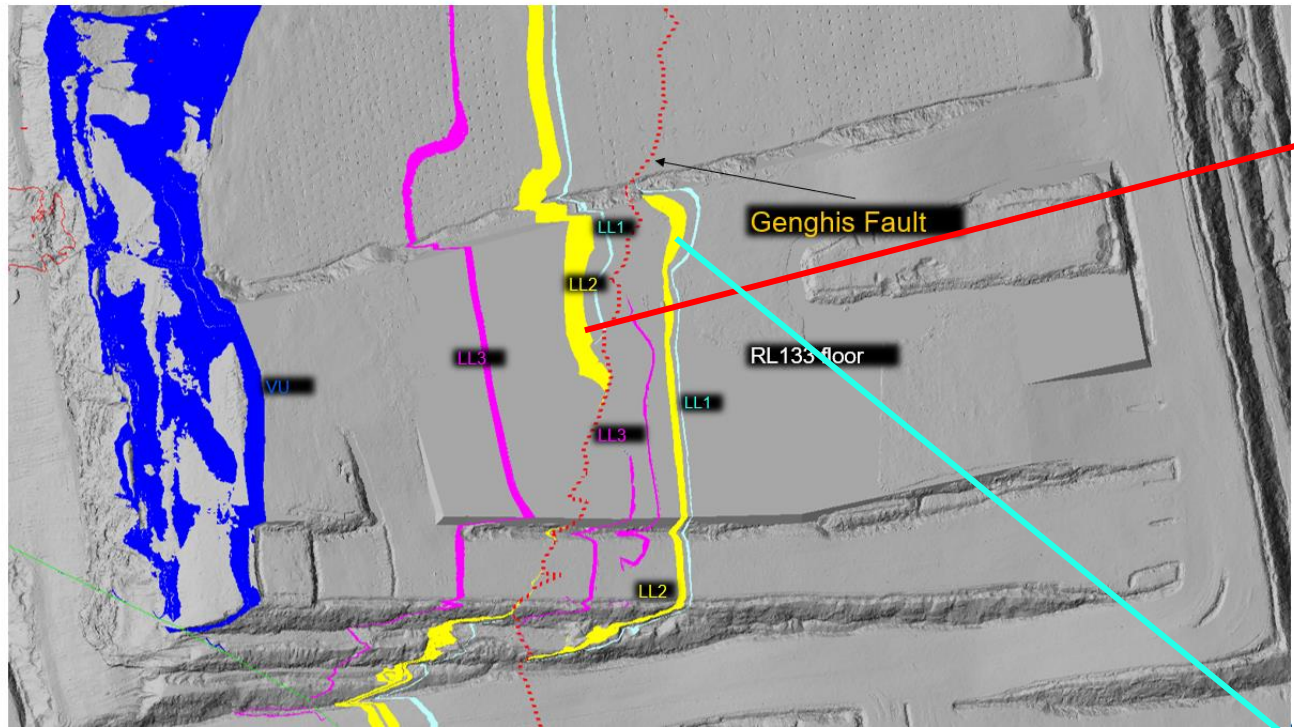
COAL CODE	STOCKPILE	COMMENTS
C_LL1	SP_B (east)	Thin seam – take care when mining
C_LL2T_LL2B	SP_C	Stockpile on SP-N
C_LL3B	SP_R	Eastern Side
C_VU1_VU3	SP_O	

Flitch 133

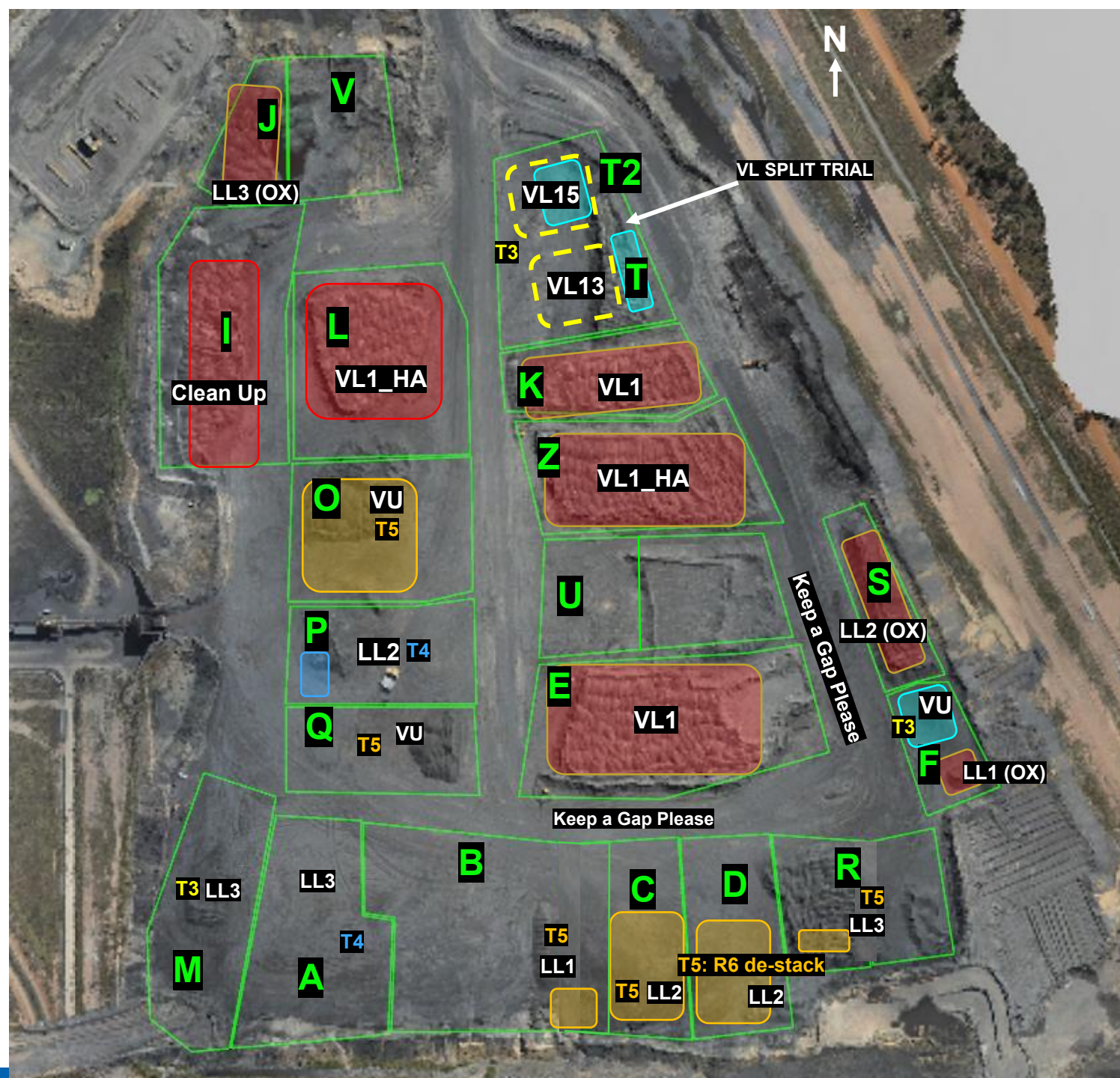


Flitch 133

T05/S02



ROM



THIESS

Tip Stockpiles South to North

ROM

VL1 ROM Pad

VL11_VL12 – VL Trial – keep separate and maintain access



31/08/25

CHPP Coal Feed Sequence

Communicate any direct feed start and finish time to CHPP control.

Comments

Currently running Blend 3
Once Stockpile O is exhausted change to Blend 4
Once Stockpile Q is exhausted change to Blend 5

In Truck Blending required for Blend 2, 3 and 4 (email sent)

Blend 4 and 5 are similar blends, when changing between blends continue to run same SG.

	Blends								
	Feed 1	Feed 2	Feed 3	Ratio	ROM Loaders	ROM Trucks	Direct Feed	Comments	active
VL TRIAL	SP-T2			Straight				VL Trial Blend (VL15)	
Blend 2	SP-C	SP-E		1:1				1 x LL2 (T05S01): 1 x VL	
Blend 3	SP-O	SP-E		1:1				1 x VU (T05S01): 1 x VL	x
Blend 4	SP-Q	SP-E		1:1				1 x VU (T05S01): 1 x VL	
Blend 5	SP-I	SP-L		1:1				1 x CC : 1 x VL HA	
Blend 6	SP-K			Straight				VL	
Wet weather									

