

ODC Daily Coaling Plan

15/09/2025

Geologist Contact: 0473 223 132



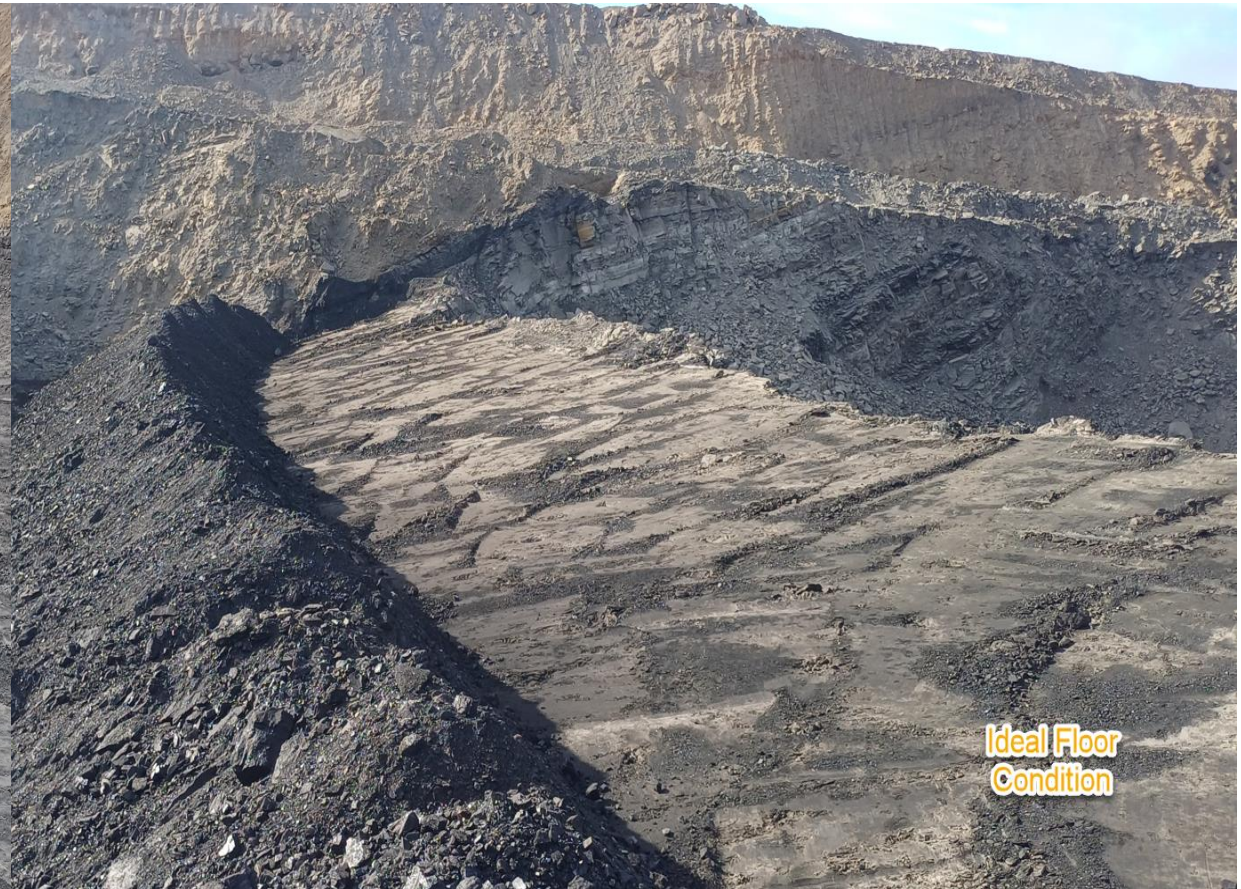
Coal Locations

| Location | Coal Type | Destination | Comments |
|----------|-------------|--------------|---|
| T03 | C_VU1_VU3 | SP_F (north) | Stockpile separately to the LL1 OX |
| | C_LL1 | | Thin seam – take care when mining Tip Stockpile South to North |
| | C_LL2T_LL2B | | |
| | C_LL3B | SP_M | Thin seam – take care when mining. |
| T04 | C_LL1 | SP_A | C_LL1_FA if faulted coal. Keep separately |
| | C_LL2T_LL2B | SP_P | C_LL2B_LL2T_FA if faulted coal. Keep separately |
| | C_LL3B | SP_M | |
| | C_VU1_VU3 | | |
| T05 | C_LL1 | SP_B | Thin seam – take care when mining |
| | C_LL2T_LL2B | SP-C | |
| | C_LL3B | SP-R | Thin seam – take care when mining |
| | C_VU1_VU3 | SP_O/SP_Q | |

NON-
Trial
VL1 to
VL_PAD

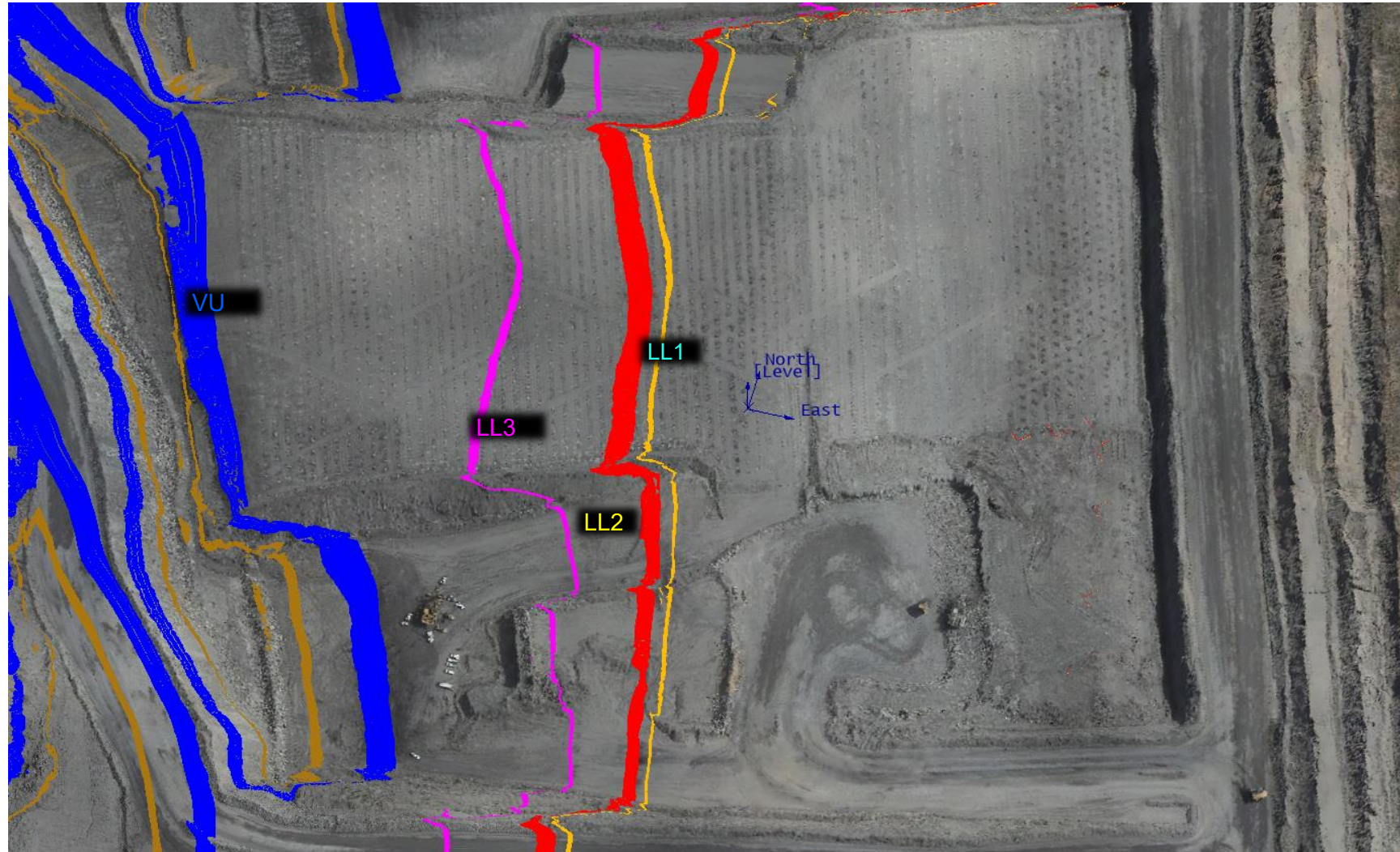
| Location | Coal Type | Destination | Comments |
|-------------------|-------------|-------------|---|
| T03/04 – VL Trial | C_VL11_VL12 | VL_Pad | North-Eastern Section (Separate from other VL) |
| | C_VL13 | SP_T | Southern End |
| | C_VL15 | SP_T2 | Northern End |

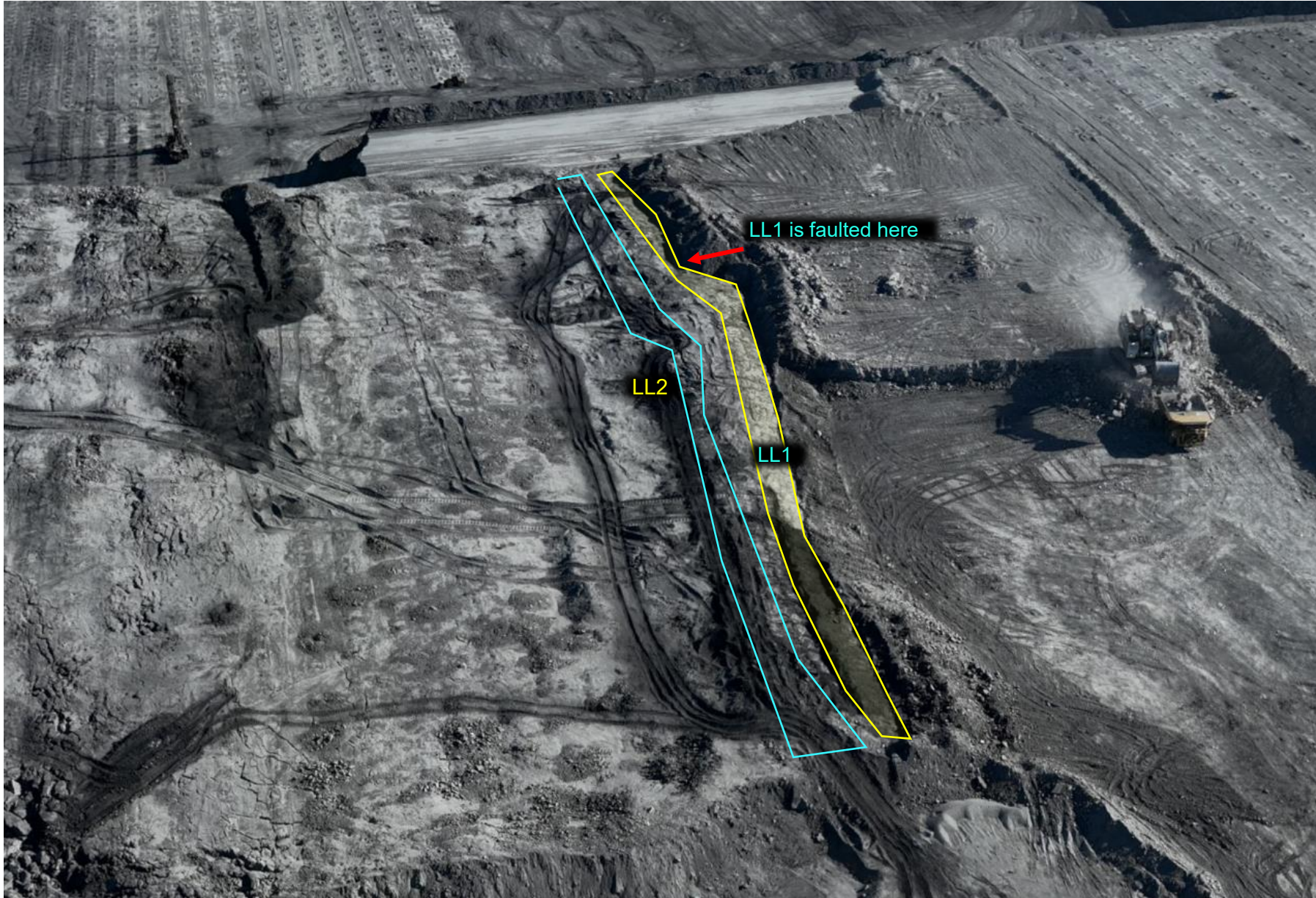
Ideal Roof and Floor Conditions



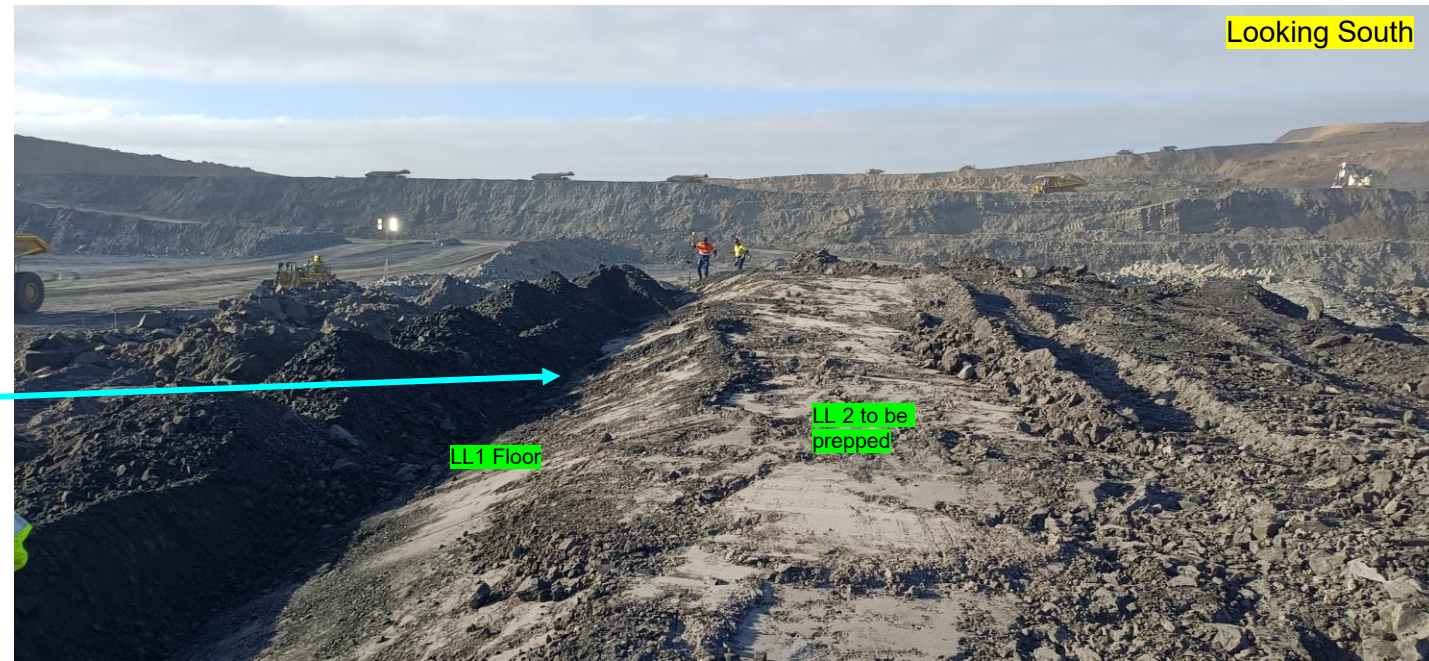
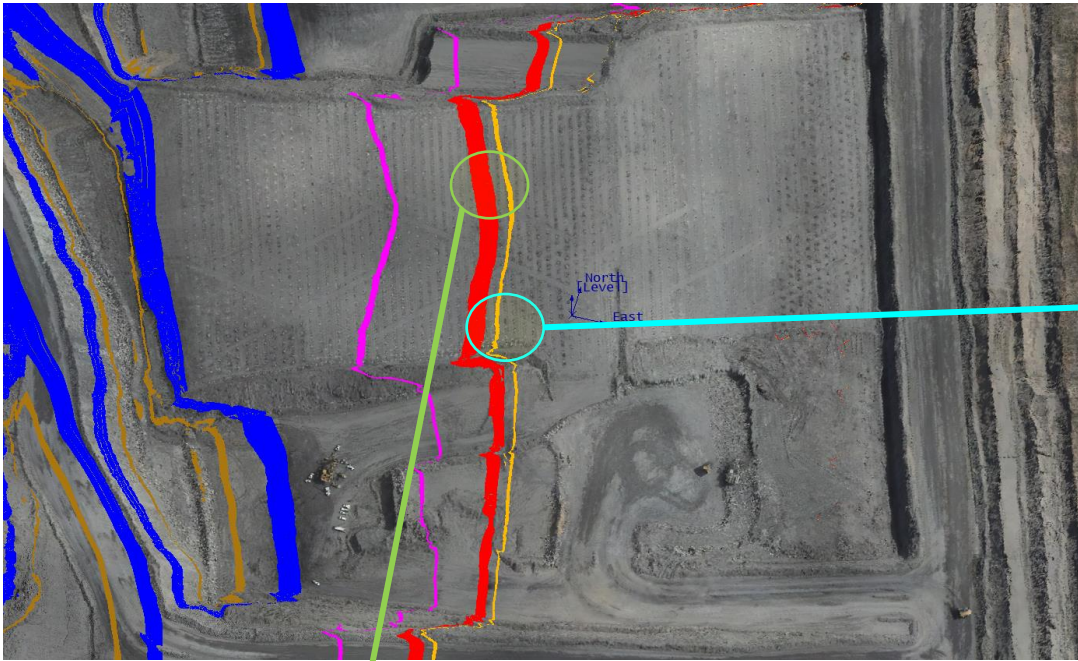
T04/S02

| COAL CODE | STOCKPILE | COMMENTS |
|-------------|-----------|--|
| C_VU1_VU3 | SP_O | |
| C_LL1 | SP_B | C_LL1_FA if faulted coal. Keep separately |
| C_LL2B_LL2T | SP_P | C_LL2B_LL2T_FA if faulted coal. Keep separately |
| C_LL3B | SP_M | |





T04/S02



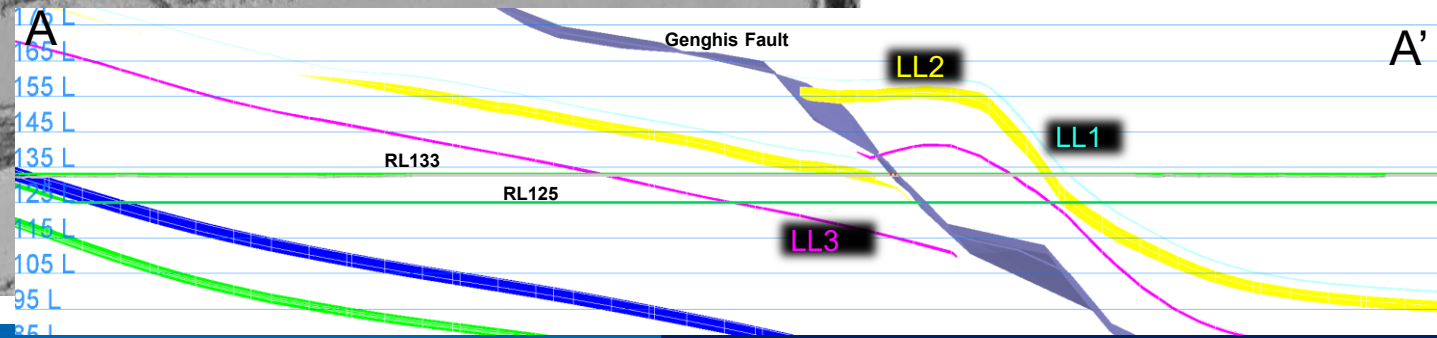
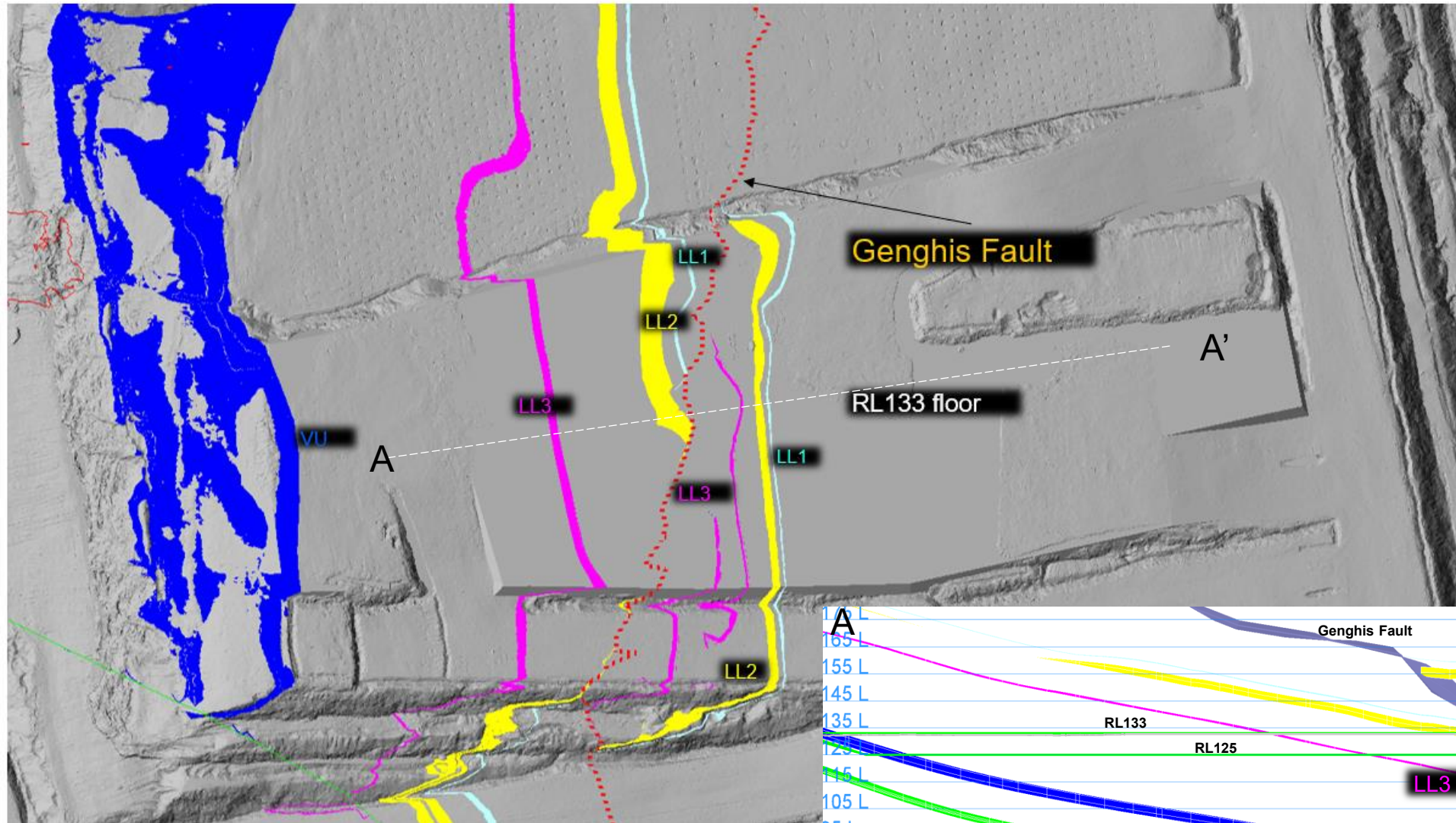
Looking South

Looking North

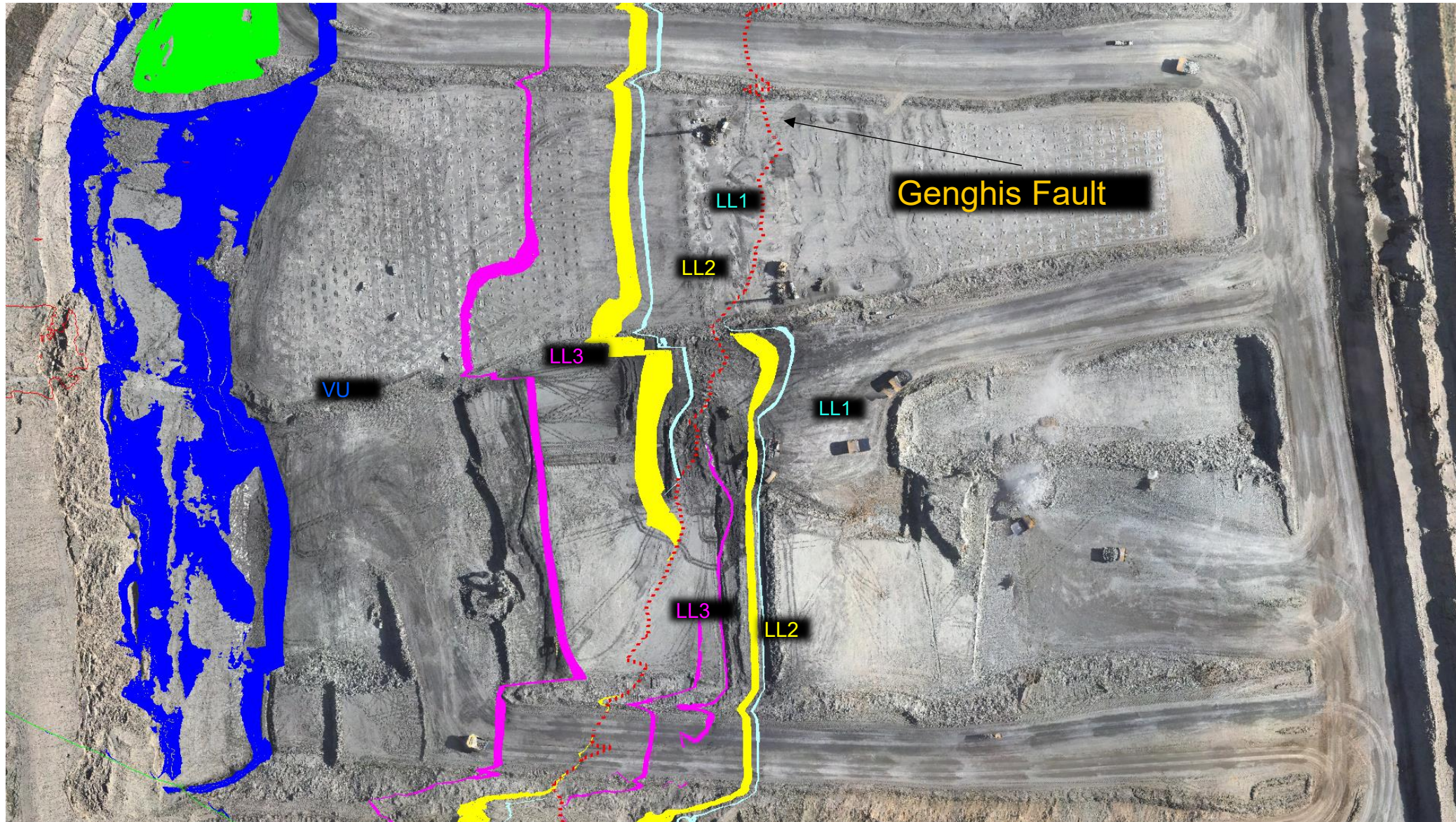
T05/S02

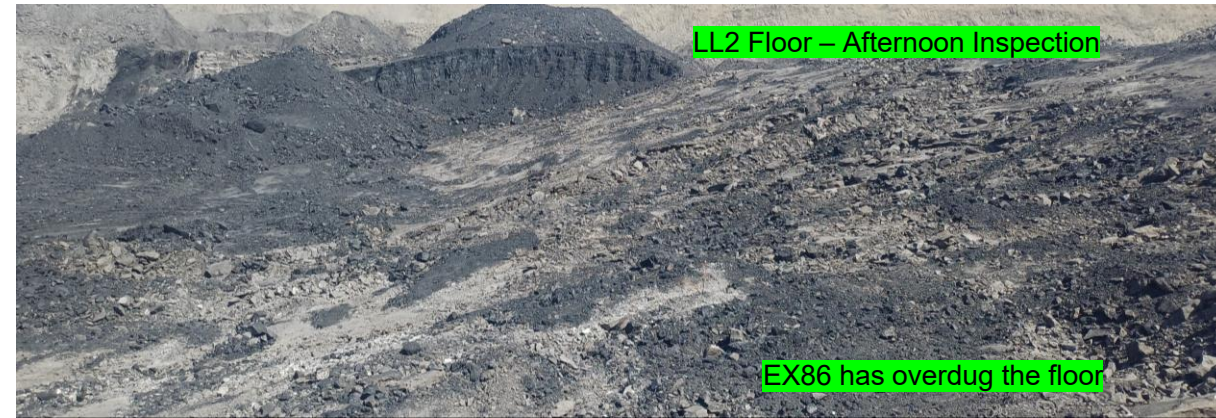
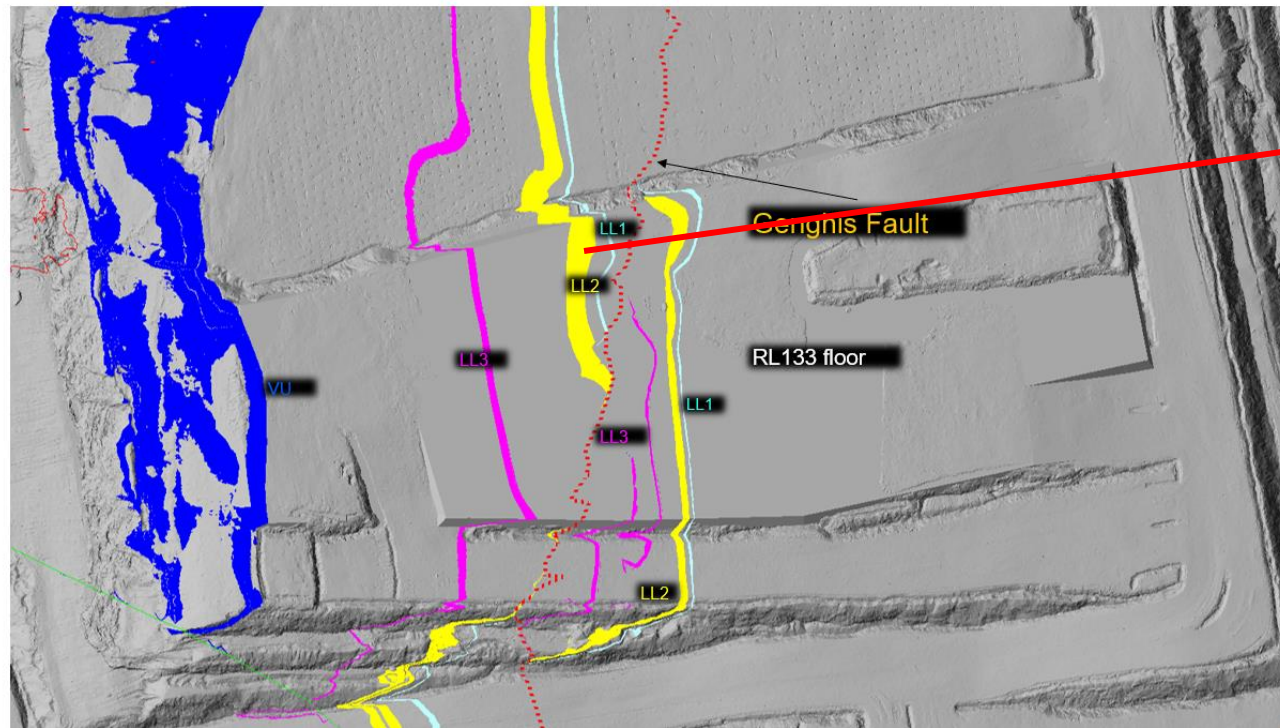
| COAL CODE | STOCKPILE | COMMENTS |
|-------------|-------------|-----------------------------------|
| C_LL1 | SP_B (east) | Thin seam – take care when mining |
| C_LL2T_LL2B | SP_C | Stockpile on SP-N |
| C_LL3B | SP_R | Eastern Side |
| C_VU1_VU3 | SP_O/SP_Q | |

Flitch 133



Flitch 133



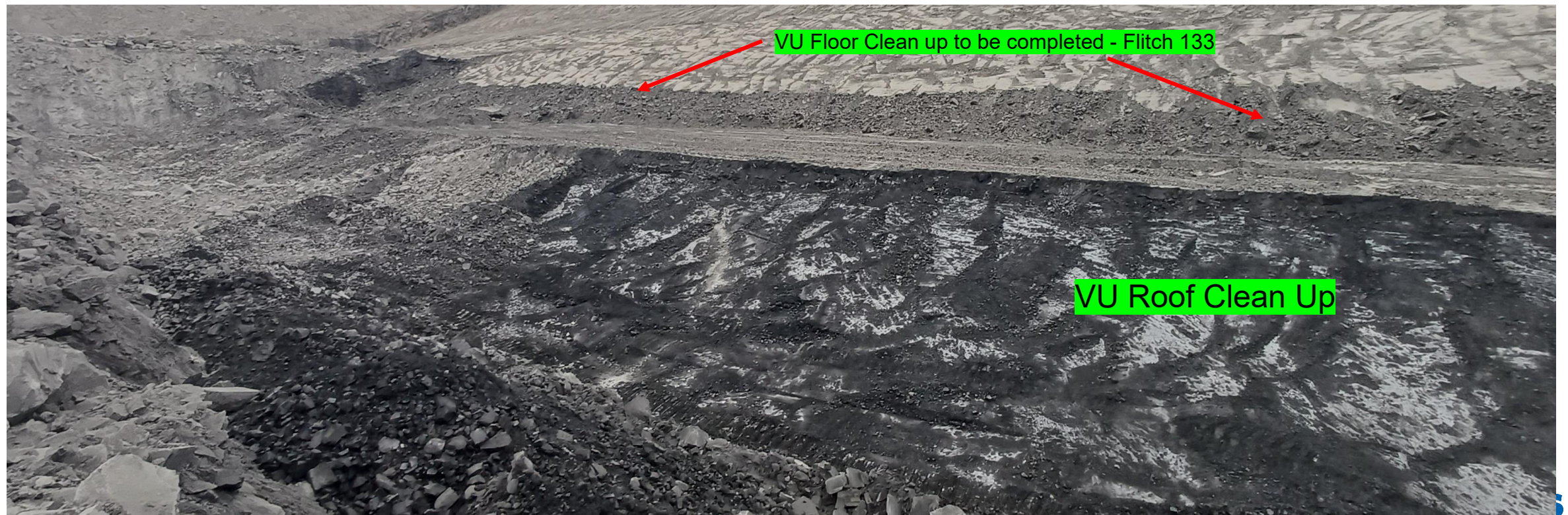


T05/S02

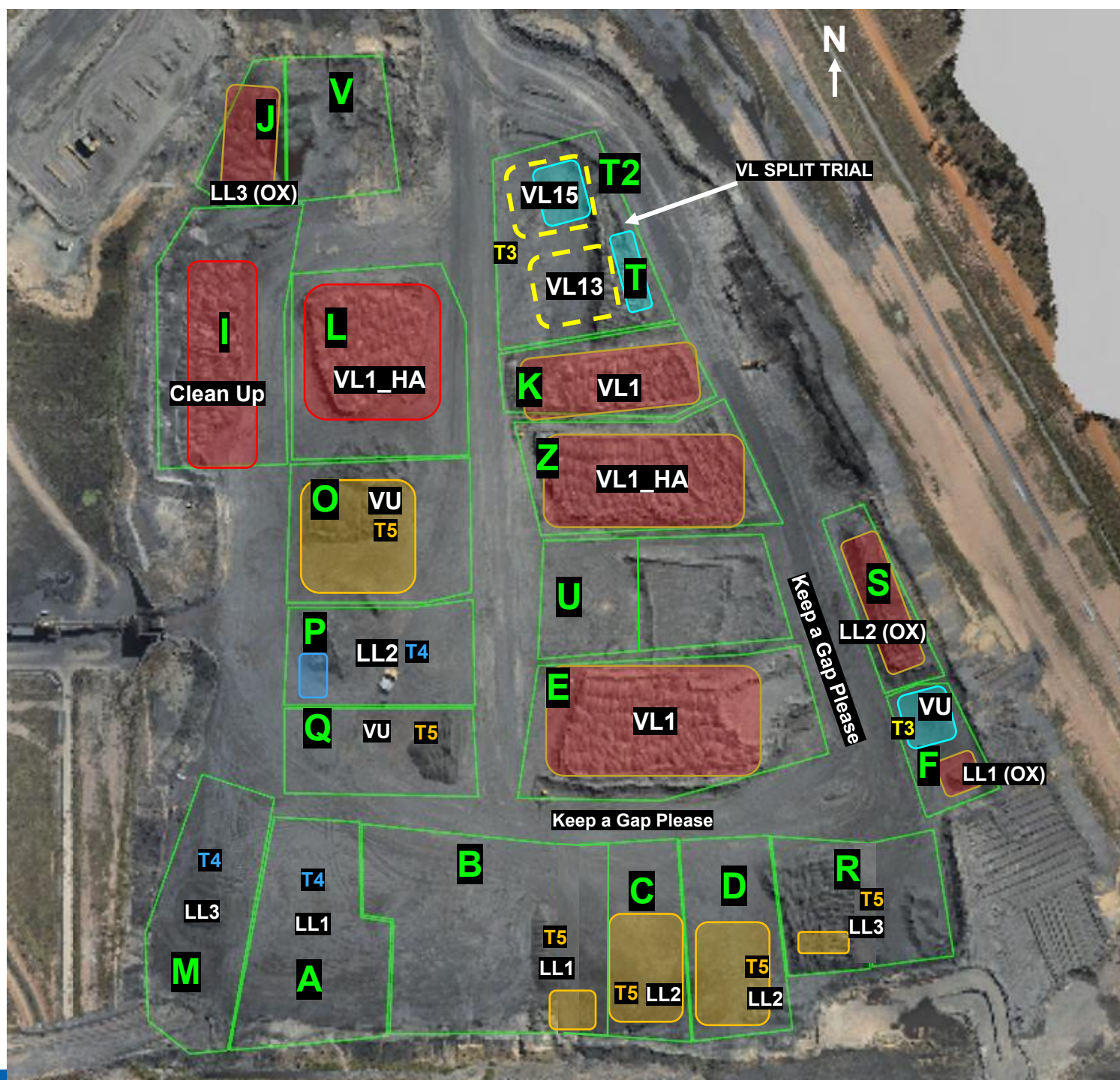


T05/S02

| COAL CODE | STOCKPILE | COMMENTS |
|-------------|-------------|-----------------------------------|
| C_LL1 | SP_B (east) | Thin seam – take care when mining |
| C_LL2T_LL2B | SP_C | Stockpile on SP-N |
| C_LL3B | SP_R | Eastern Side |
| C_VU1_VU3 | SP_O/SP_Q | |



ROM



THIESS

Tip Stockpiles South to North

ROM

VL1 ROM Pad

VL11_VL12 – VL Trial – keep separate and maintain access



31/08/25

CHPP Coal Feed Sequence

Communicate any direct feed start and finish time to CHPP control.

Comments

Currently running Blend 4

Once stockpile is exhausted change to Blend 5. If Blend 5 unavailable (<5kt on Stockpile O/Q) change to Blend 6

In Truck Blending required for Blend 2, 3 , 4 and 5 (email sent)

| | Blends | | | | | | | | |
|-------------|--------|--------|--------|----------|-------------|------------|-------------|---|--------|
| | Feed 1 | Feed 2 | Feed 3 | Ratio | ROM Loaders | ROM Trucks | Direct Feed | Comments | active |
| VL TRIAL | SP-T2 | | | Straight | | | | VL Trial Blend (VL15) | |
| Blend 2 | SP-C | SP-E | | 1:1 | | | | 1 x LL2 (T05S01): 1 x VL | |
| Blend 3 | SP-D | SP-E | | 1:1 | | | | 1 x LL2 (T05S01): 1 x VL | |
| Blend 4 | SP-B | SP-R | SP-E | 1:1:1 | | | | 1 xLL1 (T05S02) : 1 x (LL3 T03S02) : 1 x VL | X |
| Blend 5 | SP-O/Q | SP-I | | 1:1 | | | | 1 x VU (T05S01) : 1 x CC | |
| Blend 6 | SP-K | | | Straight | | | | Straight VL | |
| Wet weather | | | | | | | | | |

