

ODC Daily Coaling Plan

17/09/2025

Geologist Contact: 0473 223 132

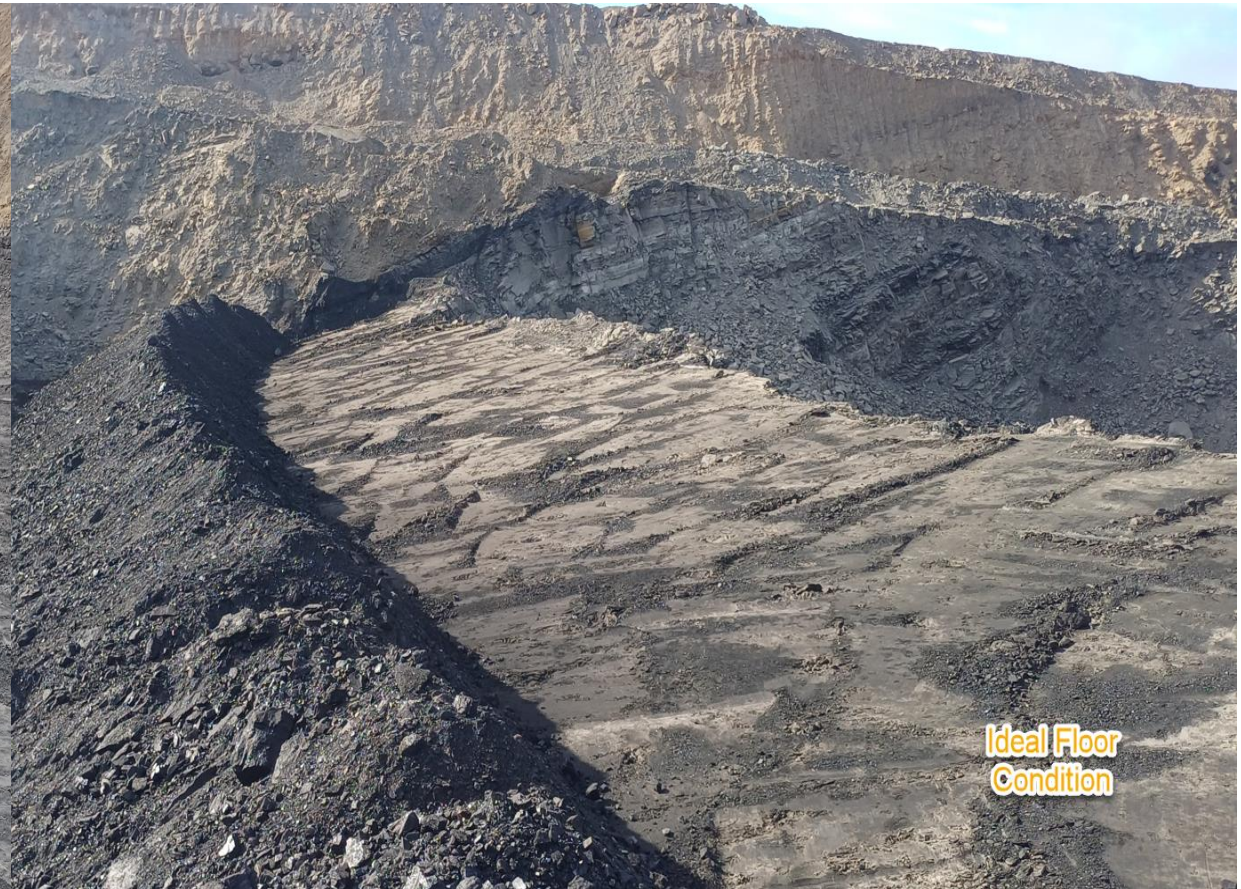


Coal Locations

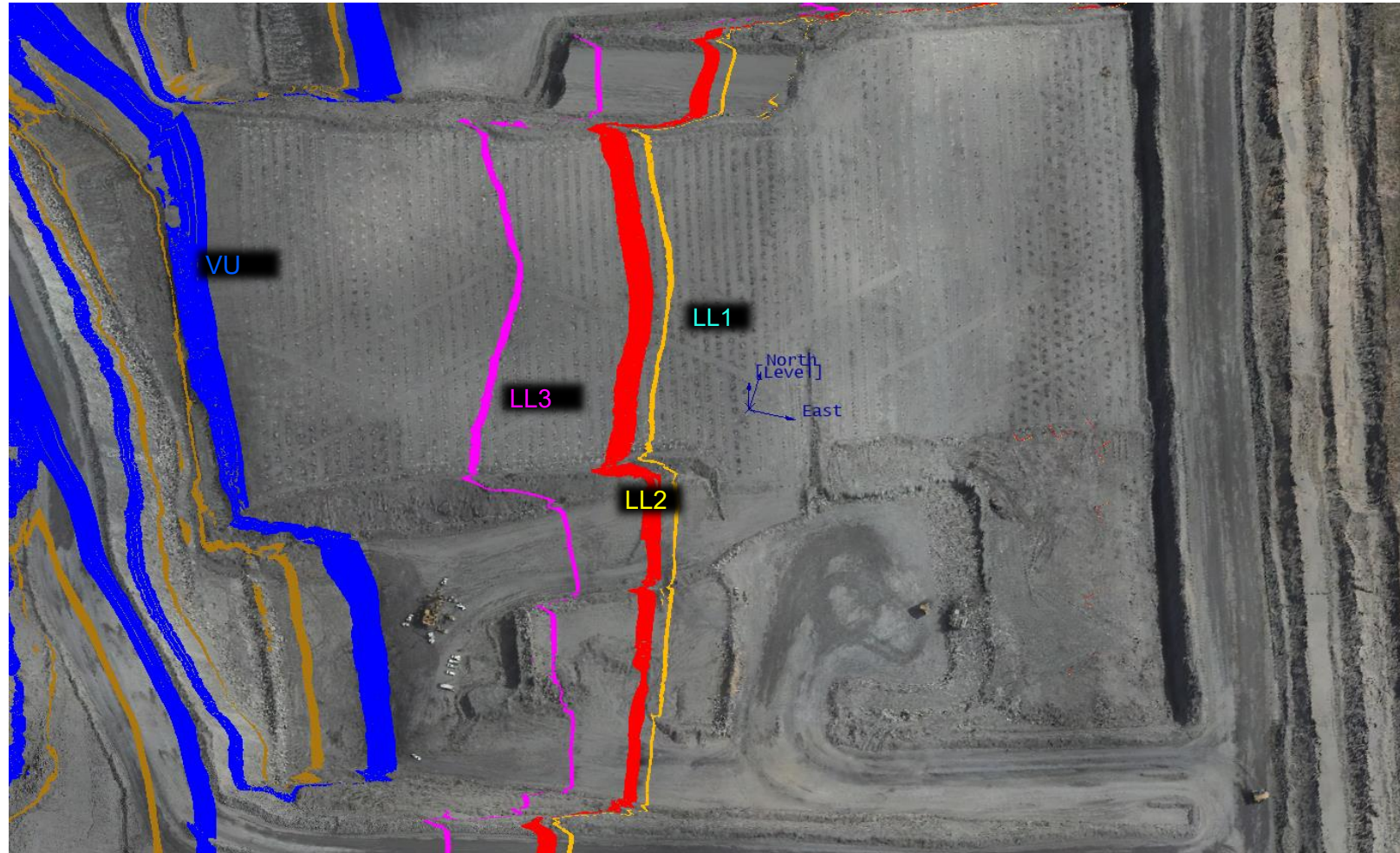
Location	Coal Type	Destination	Comments
T03	C_VU1_VU3	SP_F (north)	Stockpile separately to the LL1 OX
	C_LL1		Thin seam – take care when mining Tip Stockpile South to North
	C_LL2T_LL2B		
	C_LL3B	SP_M	Thin seam – take care when mining.
T04	C_LL1	SP_B	C_LL1_FA if faulted coal. Keep separately
	C_LL2T_LL2B	SP_P	C_LL2B_LL2T_FA if faulted coal. Keep separately
	C_LL3B	SP_M	
	C_VU1_VU3	SP-Q	
T05	C_LL1	SP_A	Thin seam – take care when mining
	C_LL2T_LL2B	SP-C	
	C_LL3B	SP-R	Thin seam – take care when mining
	C_VU1_VU3	SP_O	

Location	Coal Type	Destination	Comments
T03/04 – VL Coal	C_VL11_VL12	Waste	Capture as C_VL11_VL12
	C_VL13	SP_T	Southern End
	C_VL15	SP_T2	Northern End

Ideal Roof and Floor Conditions



T04/S02

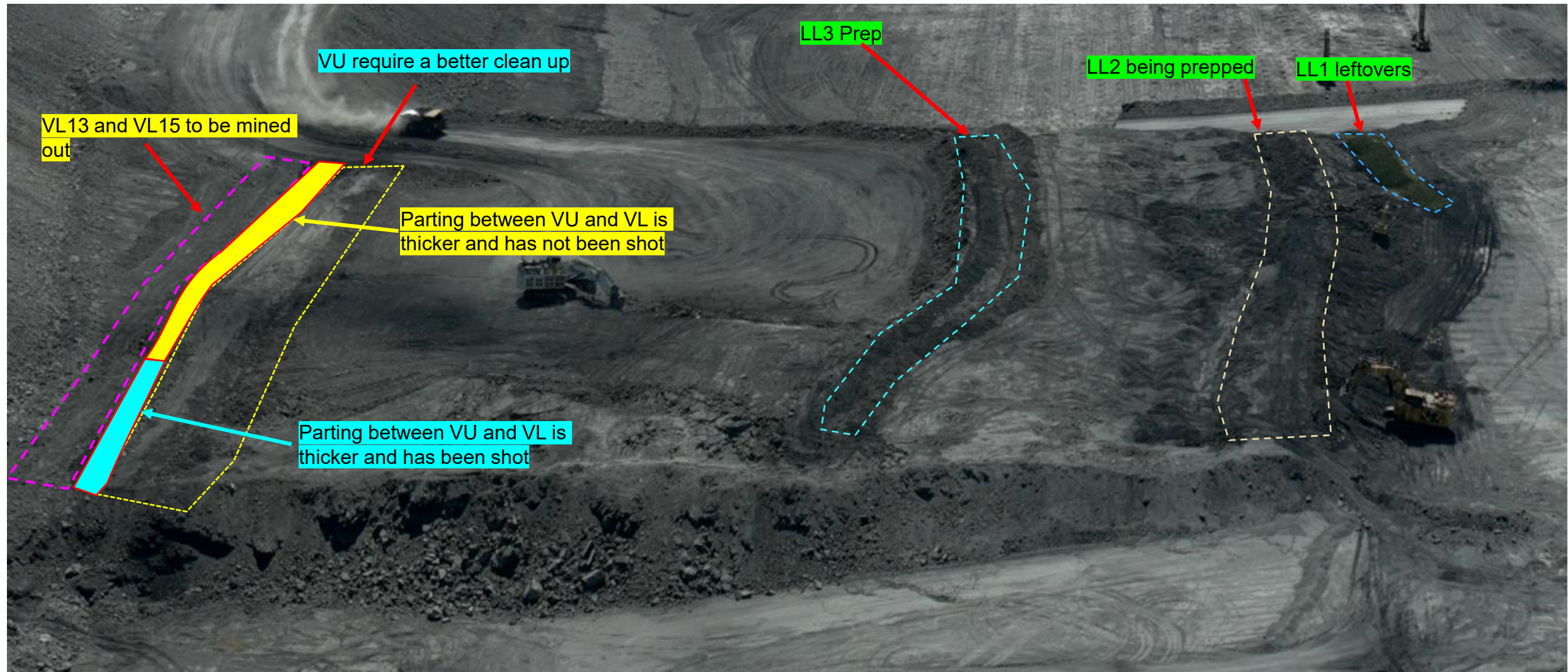


COAL CODE	STOCKPILE	COMMENTS
C_VU1_VU3	SP_Q	
C_LL1	SP_B	C_LL1_FA if faulted coal. Keep separately
C_LL2B_LL2T	SP_P	C_LL2B_LL2T_FA if faulted coal. Keep separately
C_VL11_VL12	Waste	
C_VL13	SP_T	Southern End
C_VL15	SP_T2	Northern End

T04/S02

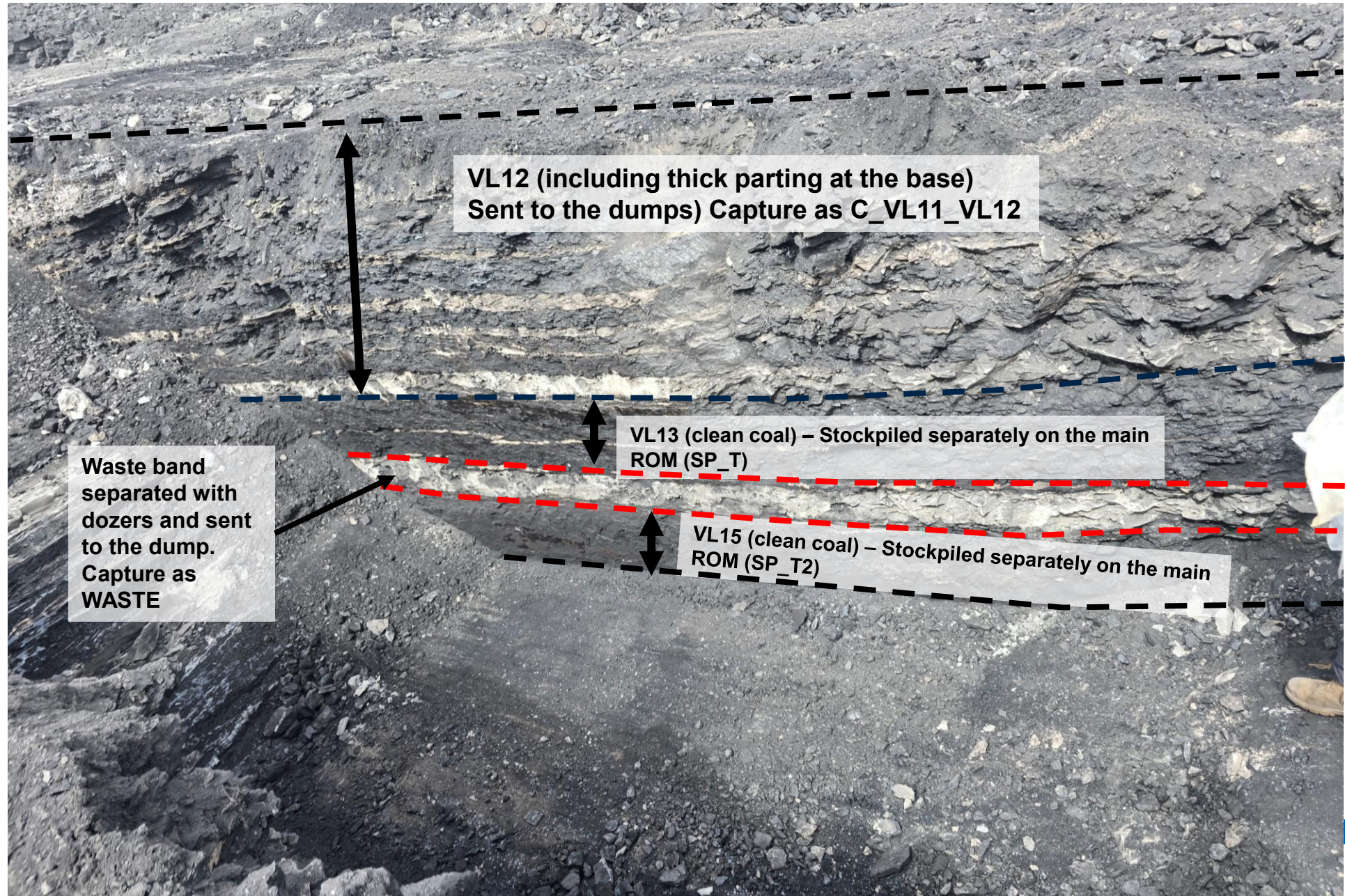
Coal Code	Destination	Comments
C_VL11_VL12	Waste	
C_VL13	SP_T	Southern End
C_VL15	SP_T2	Northern End


COAL CODE	STOCKPILE	COMMENTS
C_VU1_VU3	SP_Q	
C_LL1	SP_B	C_LL1_FA if faulted coal. Keep separately
C_LL2B_LL2T	SP_P	C_LL2B_LL2T_FA if faulted coal. Keep separately
C_LL3B	SP_M	



T04/S02 – VL Coal Mining – Only CRS Operators

Coal Code	Destination	Comments
C_VL11_VL12	Waste	
C_VL13	SP_T	Southern End
C_VL15	SP_T2	Northern End





Mine down to the thick waste band at the base of the VL12


Stockpile on the VL ROM



Mine out the VL13 and stockpile on the main ROM

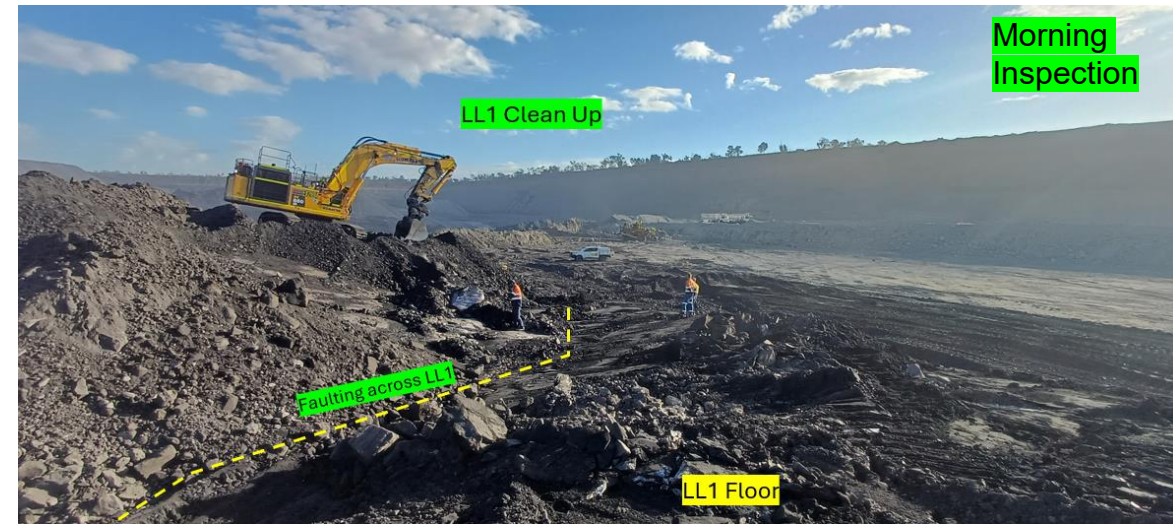
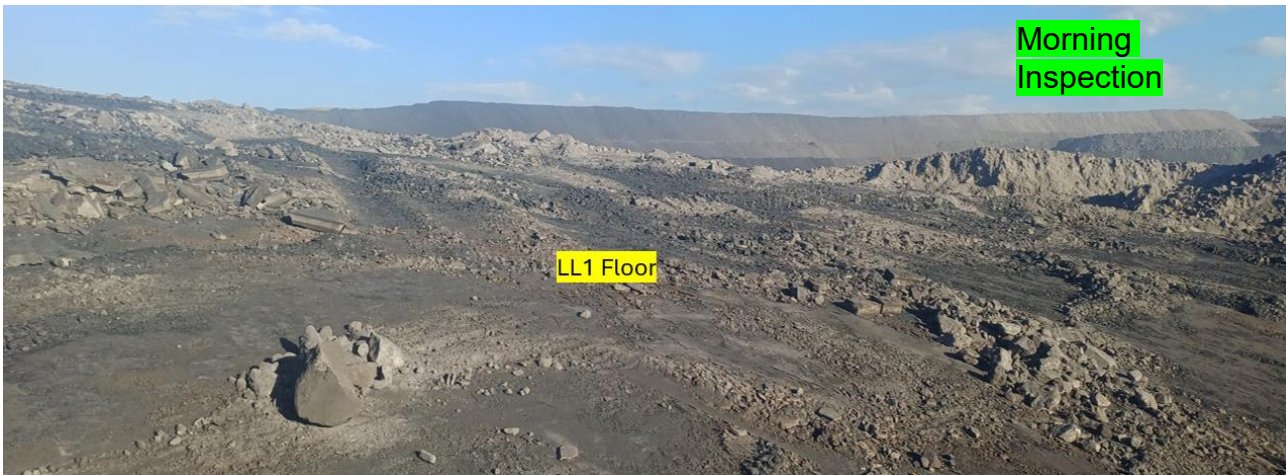


Split out the waste band using 80t digger – Send as waste



Mine the VL15 and stockpile separately on the main ROM

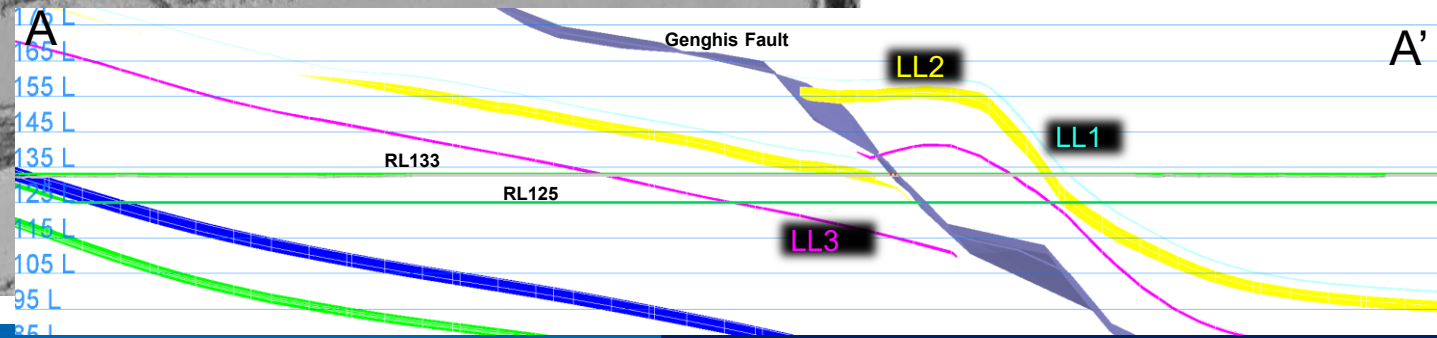
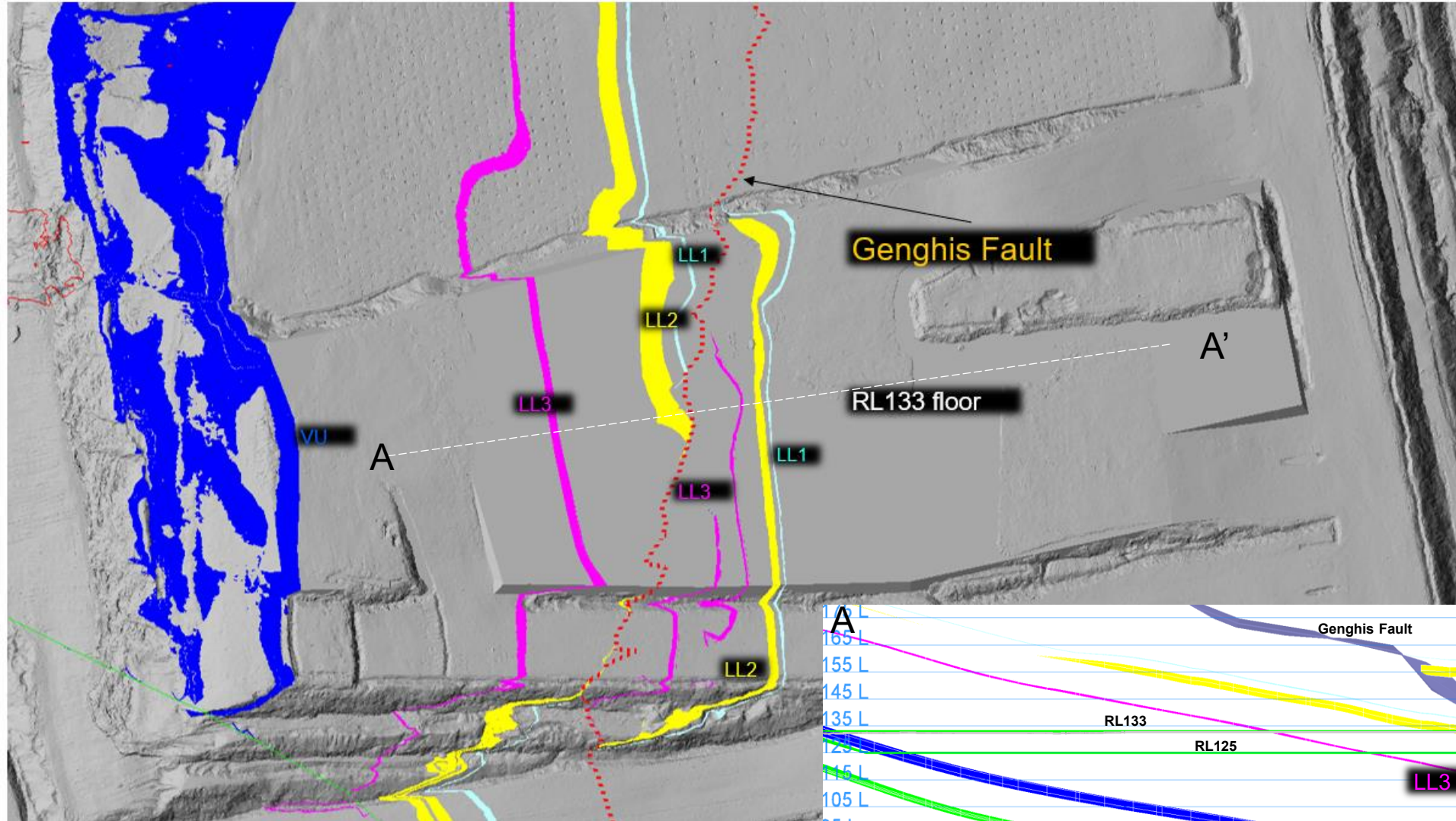
T04/S02



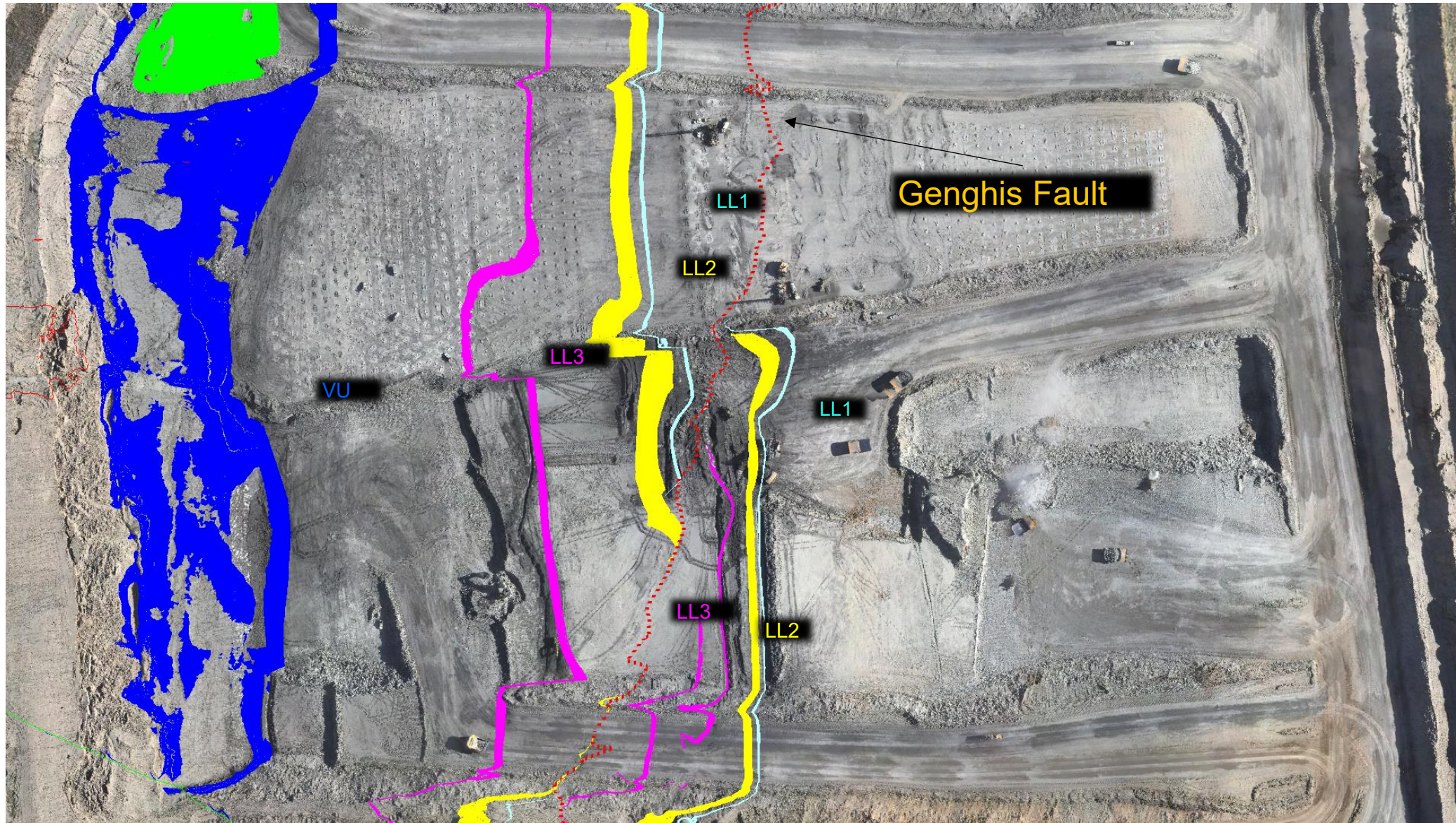
T05/S02

COAL CODE	STOCKPILE	COMMENTS
C_LL1	SP_A	Thin seam – take care when mining
C_LL2T_LL2B	SP_C	
C_LL3B	SP_R	
C_VU1_VU3	SP_O	

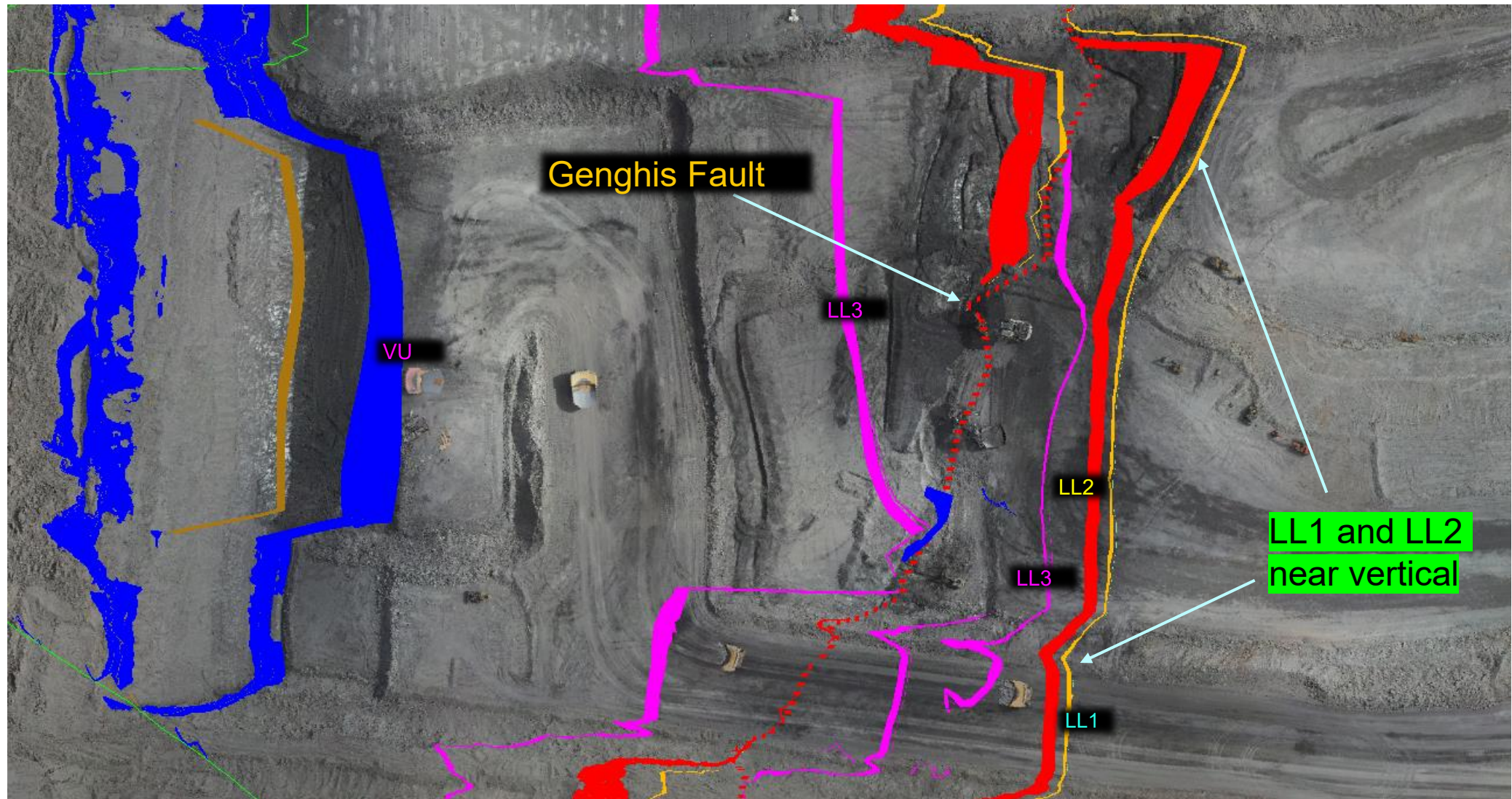
Flitch 133



Flitch 133



T05/S02 - RL125

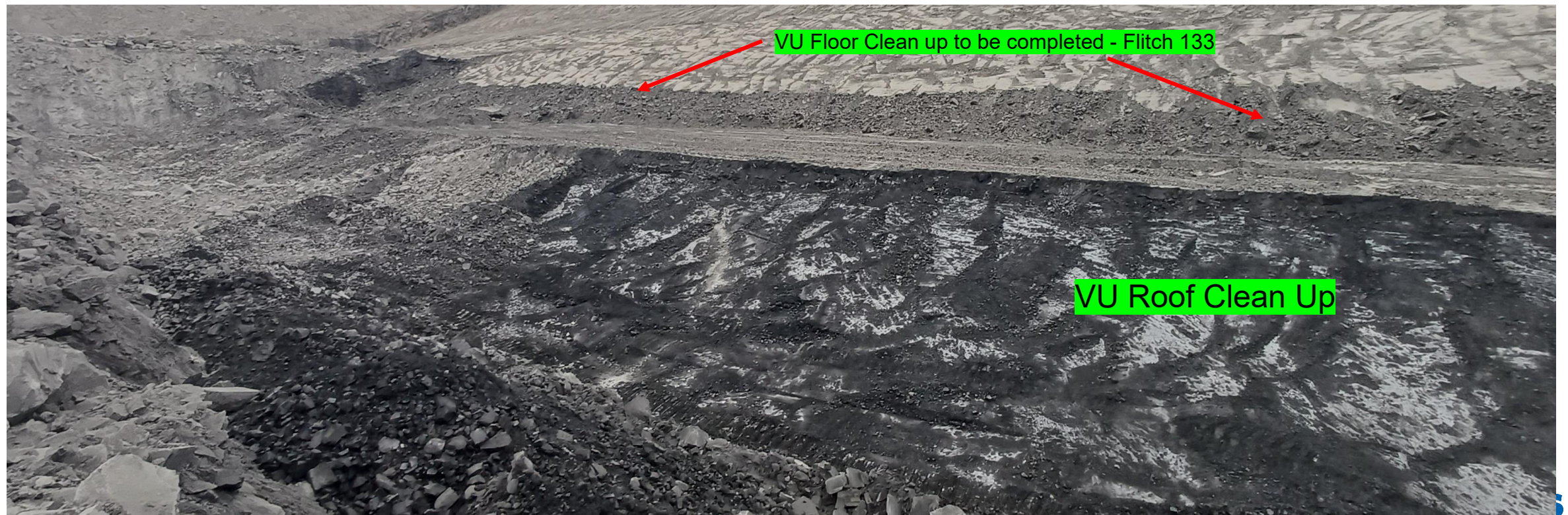


T05/S02 - RL129



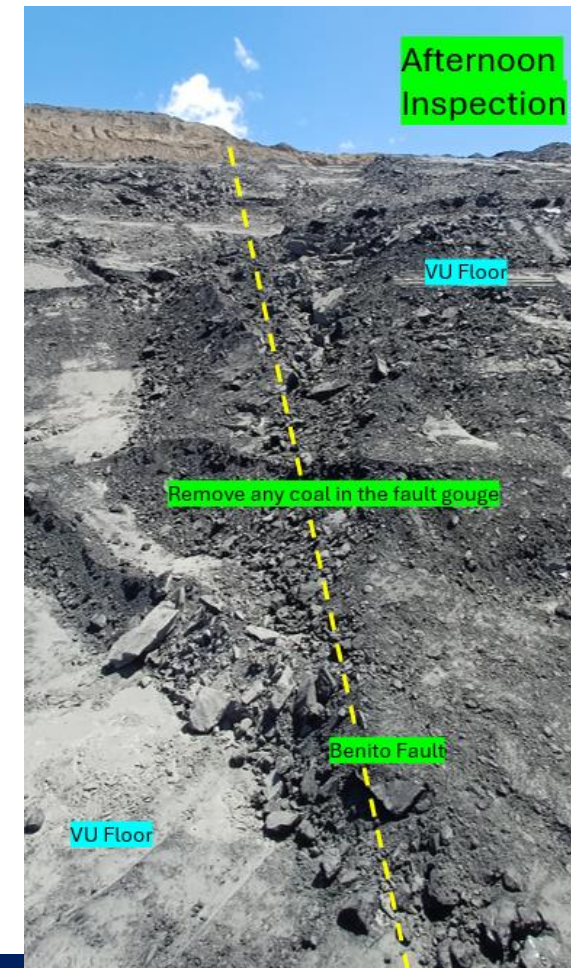
T05/S02

COAL CODE	STOCKPILE	COMMENTS
C_LL1	SP_A	Thin seam – take care when mining
C_LL2T_LL2B	SP_C	
C_LL3B	SP_R	
C_VU1_VU3	SP_O	

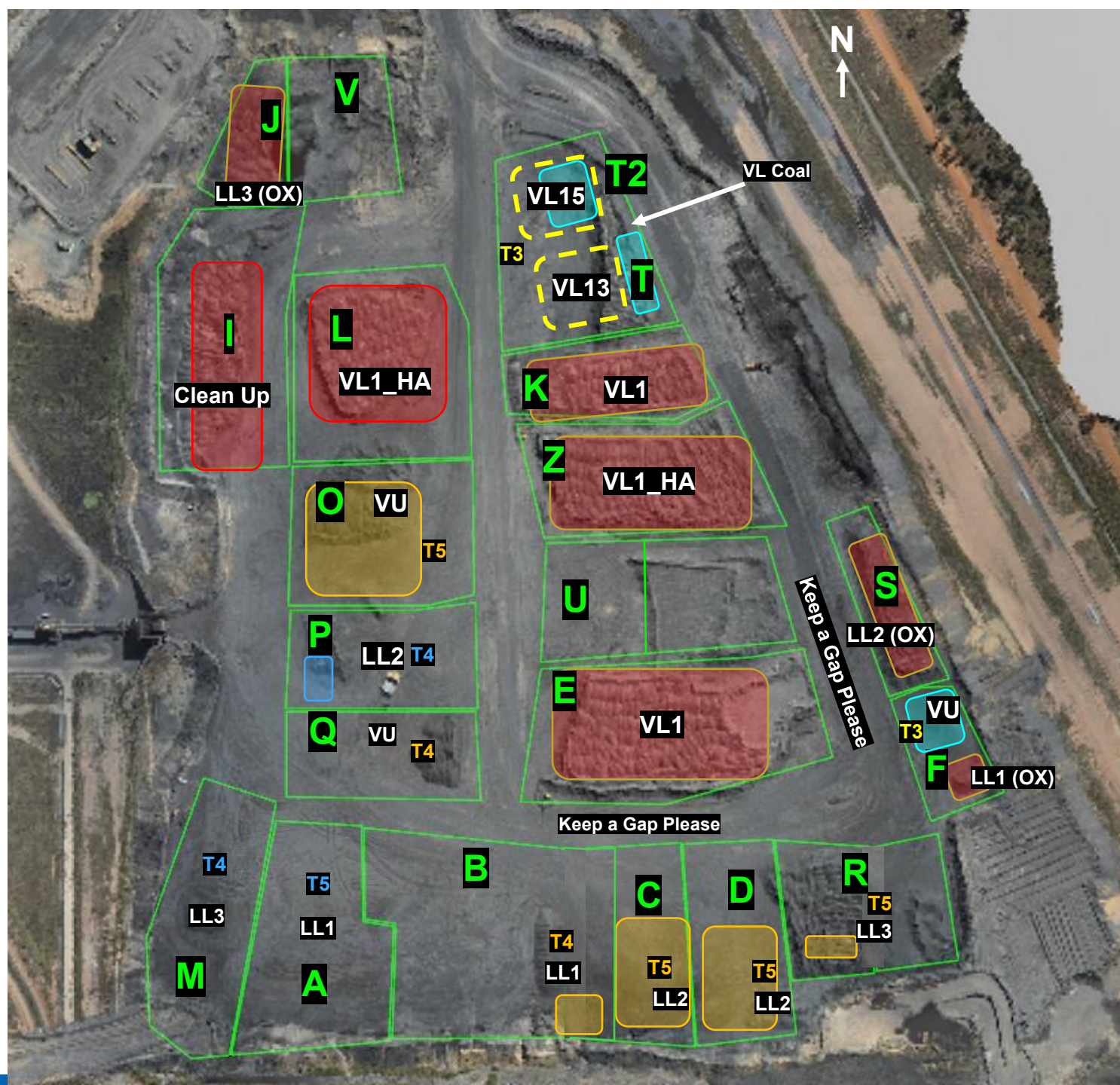


T05/S01 Ramp 6 De-Stack

Only put a CRS operator on 80t digger in this area



ROM



THIESS

Tip Stockpiles South to North



31/08/25

CHPP Coal Feed Sequence

Communicate any direct feed start and finish time to CHPP control.

Comments

Currently Running Blend 5

Once Stockpile O is exhausted change to Blend 2

If no LL2 available change to Blend 3

If no LL1/LL2 or VU available change to Blend 6

In Truck Blending required for Blend 2, 3 , 4 and 5 (email sent)

Auto trucks dumping LL2 on both C and D. Utilise whichever stockpile is available.
Auto trucks dumping VU on both O and Q. Utilise whichever stockpile is available.

	Blends								
	Feed 1	Feed 2	Feed 3	Ratio	ROM Loaders	ROM Trucks	Direct Feed	Comments	active
VL TRIAL	SP-T2			Straight				VL Trial Blend (VL15)	
Blend 2	SP-C/D	SP-E		1:1				1 x LL2 (T05S01): 1 x VL	
Blend 3	SP-B	SP-R	SP-E	1:1:1				1 xLL1 (T04S02) : 1 x (LL3 T05S02) : 1 x VL	
Blend 4									
Blend 5	SP-O/Q	SP-I		1:1				1 x VU (T05S01) : 1 x CC	x
Blend 6	SP-K			Straight				Straight VL	
Wet weather									

