

# ODC Daily Coaling Plan

24/09/2025

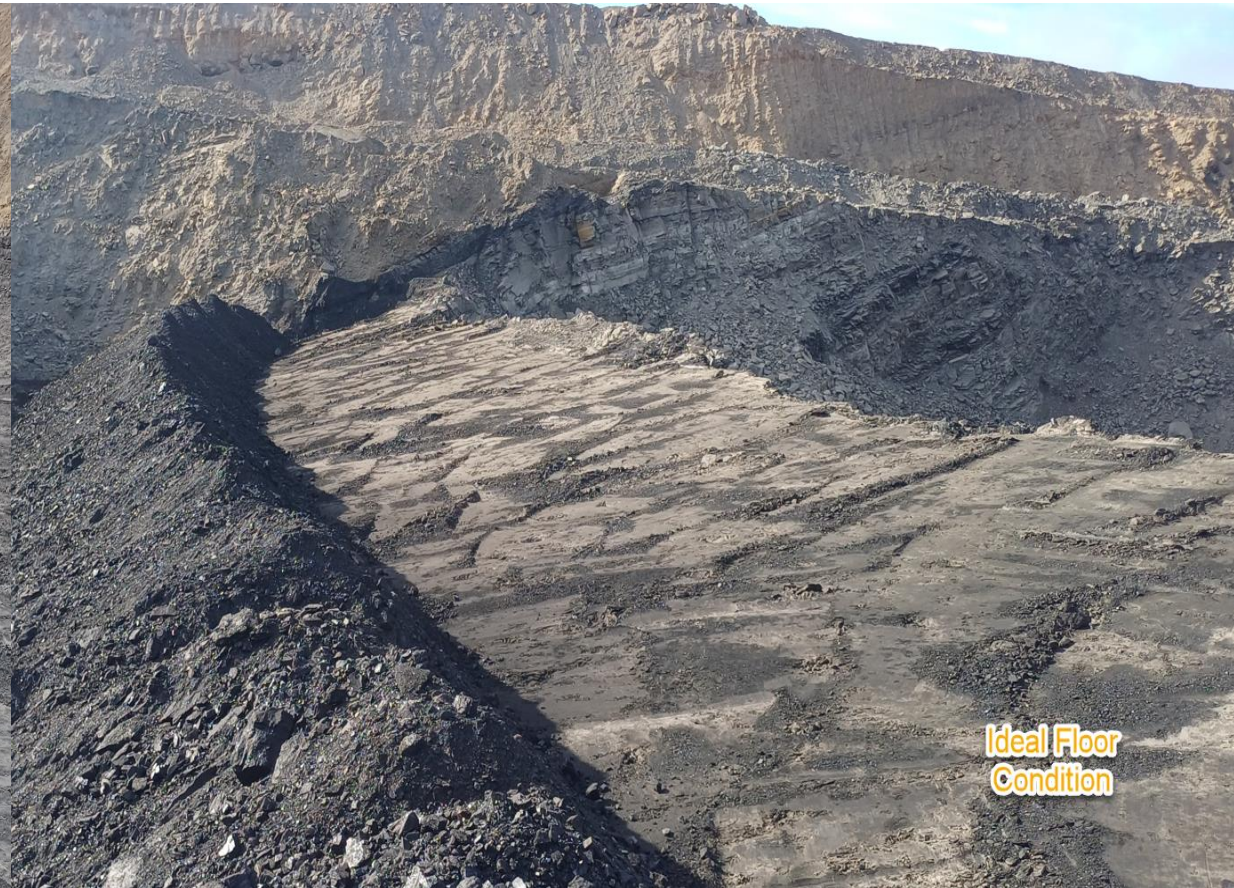
Geologist Contact: 0473 223 132



Location	Coal Type	Destination	Comments
T03	C_VU1_VU3		
	C_LL1		
	C_LL2T_LL2B		
	C_LL3B		
T04	C_LL1	SP_B (East)	Keep separate from T04 LL1
	C_LL2T_LL2B	SP_C	
	C_LL3B	SP_M	
	C_VU1_VU3	Refer To VU Trial Slide	
T05	C_LL1	SP_B (West)	Keep separate from T04 LL1
	C_LL2T_LL2B	SP_U	
	C_LL3B	SP_R	Use SP_S as overflow
	C_VU1_VU3	SP_O	Use SP_D as overflow
	C_VU1_VU3_FA	SP_I	
Location	Coal Type	Destination	Comments
T04 – VL Coal	C_VL11_VL12	Waste	Capture as C_VL11_VL12
	C_VL13	E1	Northern Section
	C_VL13	E2	Southern Section
	C_VL15	E3	Northern Section
	C_VL15	E4	Southern Section



# Ideal Roof and Floor Conditions





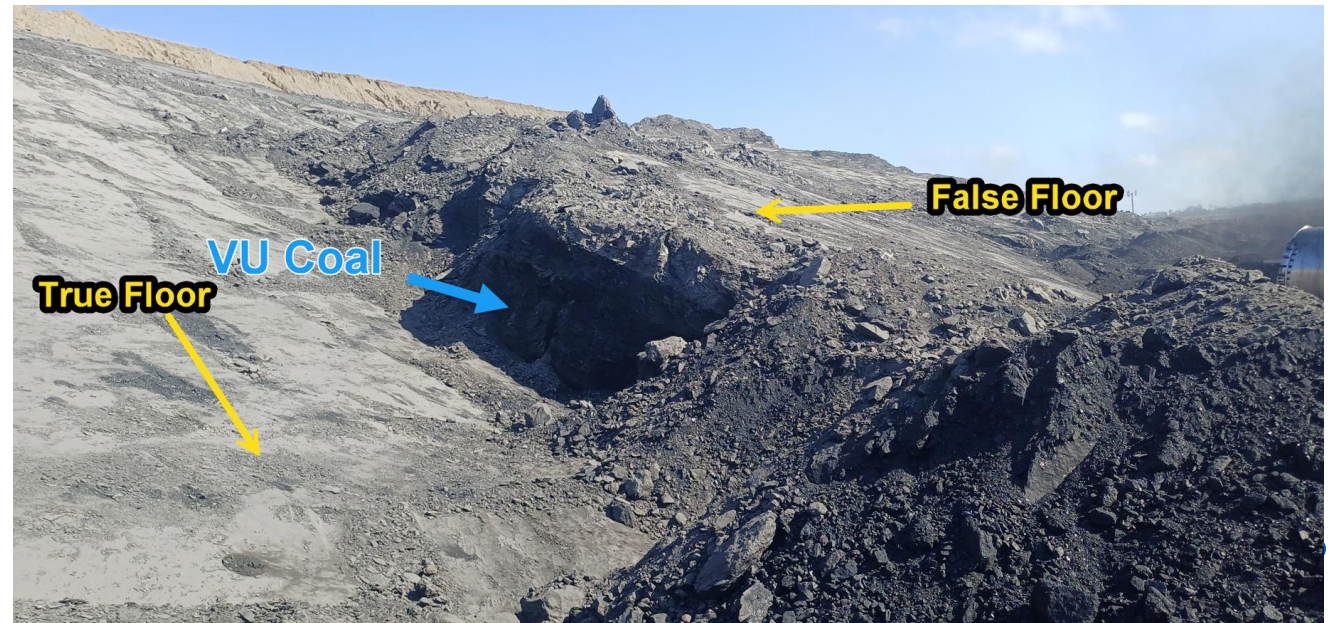
# Test Holes

For the bottom seam in a dig can we please ensure a minimum of 3 test holes spread across the coal floor are dug, to refusal, prior to walking equipment away from the area.

For terraces 1 through 4 this will be in the VL floor. Terraces 5 onwards this will be the VU floor.

Can we make this a standard practice moving forward to prevent leaving potential coal behind.

Example of why this is important

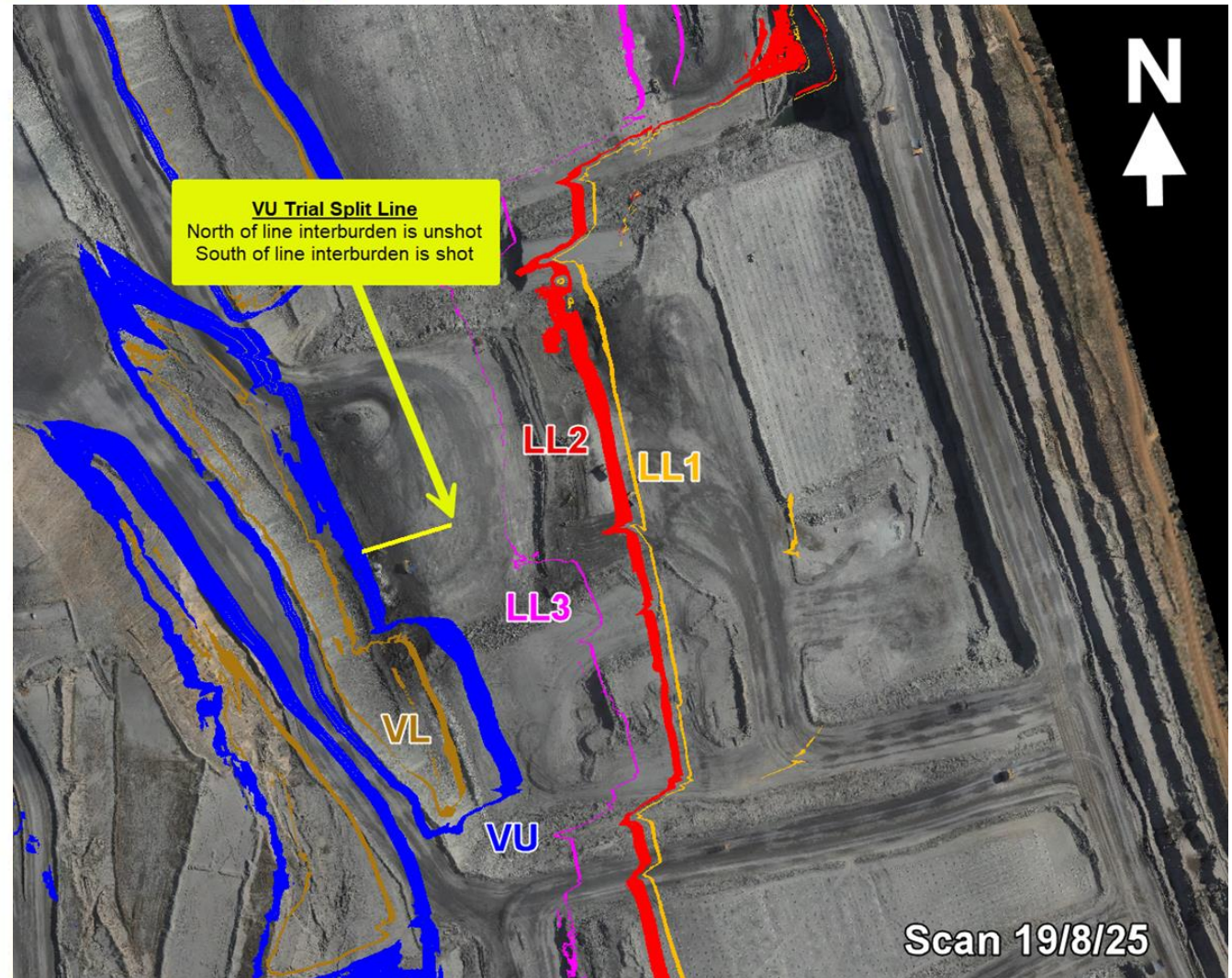




# T04S01 – VU / VL Trial

## Loss & Dilution Initiative - VU / VL Parting

- The Ramp 5 Destack (Terrace 04) has been identified as an area to trial a L&D initiative where the interburden between the VU and VL coal is ripped & pushed in place of Through Seam blasted.
- The proposal is to split a coal mining area in half, trialling rip & push on one side, and conventional Through seam blasting on the other. The recovery & dilution of the coal will be studied during the mining.
- Drilling from 140RL to 125RL is currently scheduled to begin on July 22<sup>nd</sup>. Need to commit to the trial by this date.
- Due to coal chasing holes from the 140RL blast, the parting from 140RL to 125RL has already been blasted (see slide 5 & 6 cross sections). This trial will need to occur in the next bench down with a ~85m section on the North of the bench being unblasted from 125RL to 110RL. This will be drilled from the 140RL.
- Based on the July MTP, the trial area will start mining in mid September.



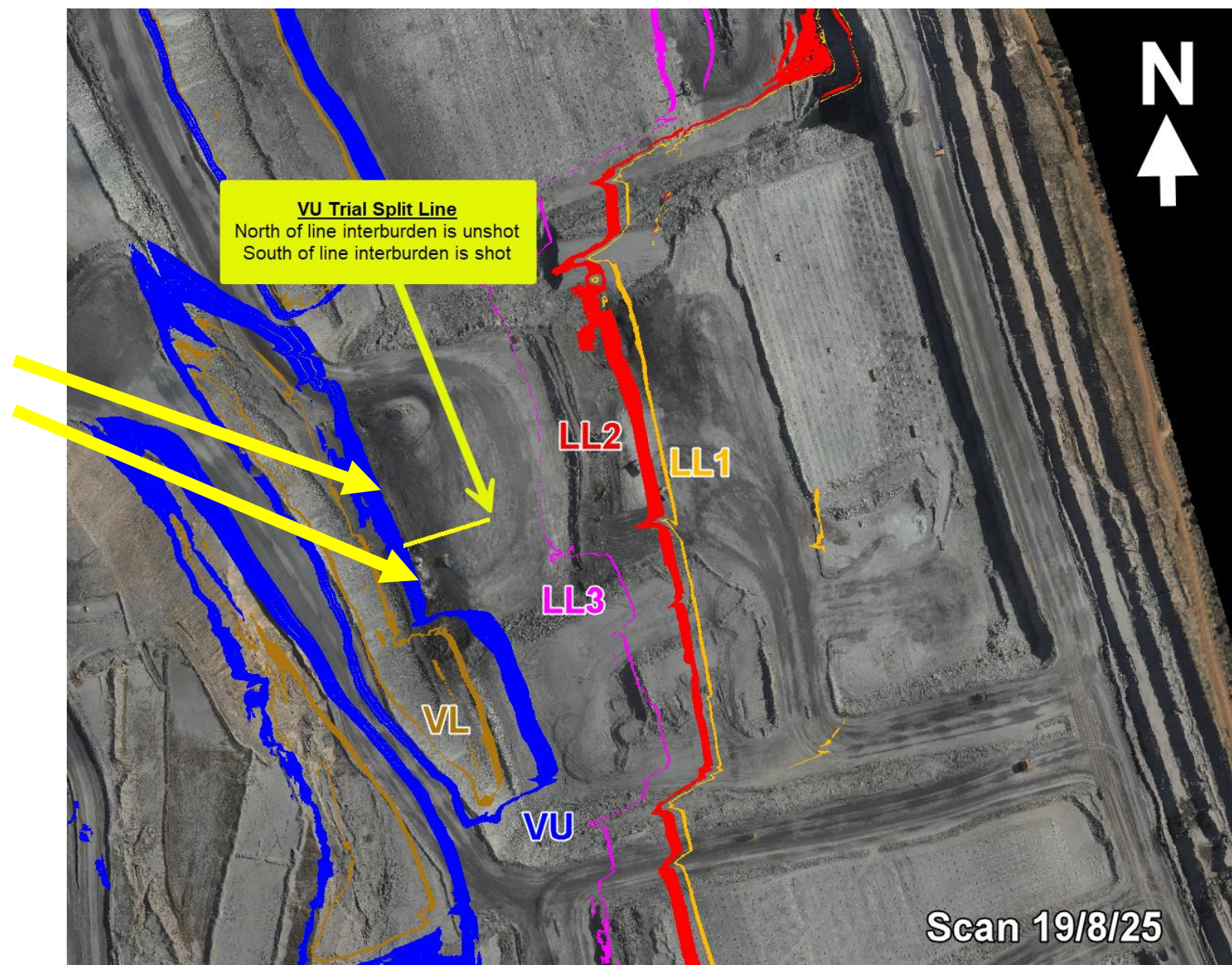


# T04/S01

COAL CODE	STOCKPILE	COMMENTS
C_LL1	SP_B	Eastern Side
C_LL2B_LL2T	SP_C	
C_VL11_VL12	Waste	
C_VL13	SP_T	Southern End
C_VL15	SP_T2	Northern End

COAL CODE	STOCKPILE	COMMENTS
VU1_VU3	SP_P	Coal north of split line, interburden has been shot
VU1_VU3	SP_A	Coal south of split line, interburden is un-shot

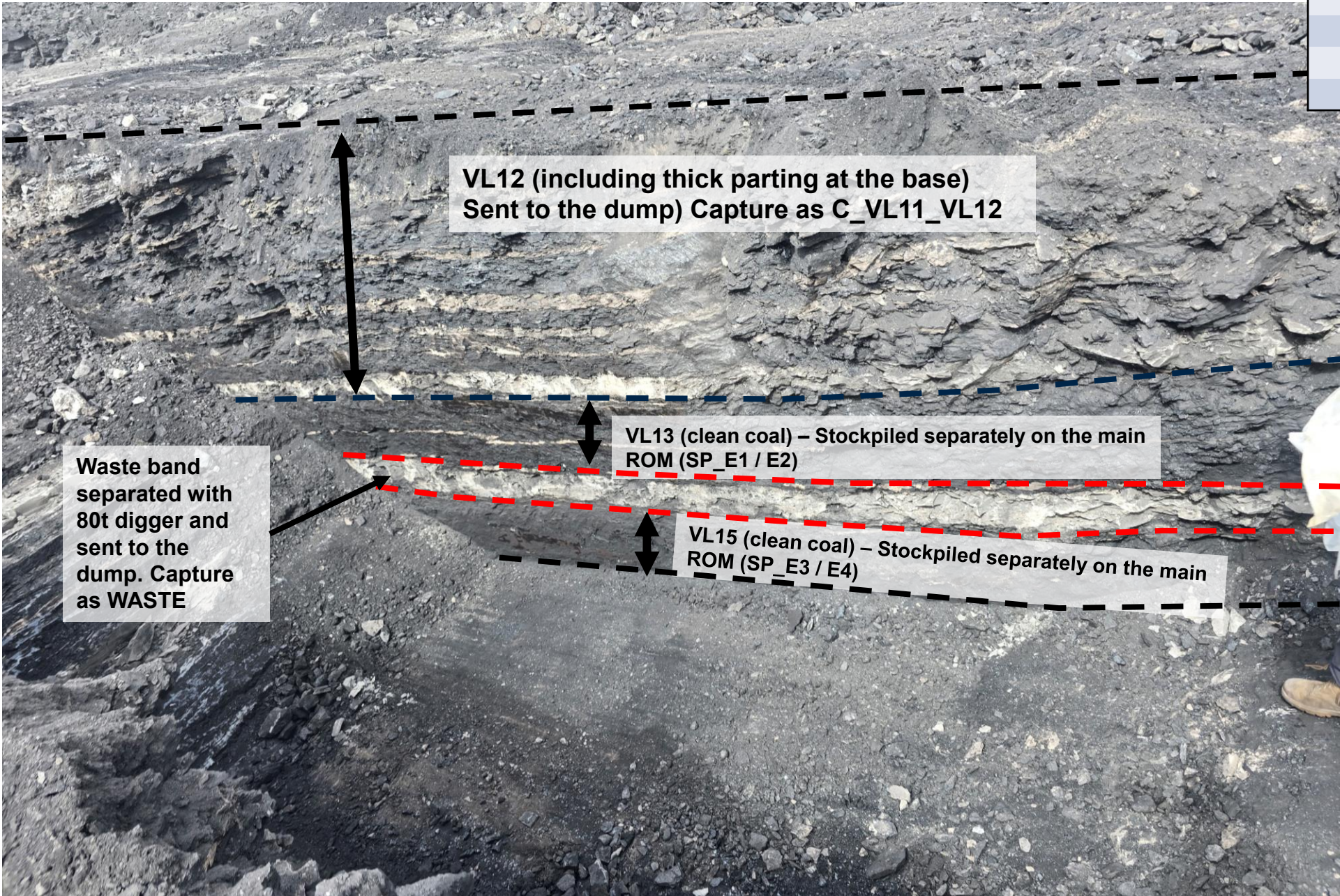
Split line is clearly marked on the Topes screen.






# T04/S01 – VL Coal Mining – Only CRS Operators

Coal Code	Destination	Comments
C_VL11_VL12	Waste	
C_VL13	E1	Northern Section
C_VL13	E2	Southern Section
C_VL15	E3	Northern Section
C_VL15	E4	Southern Section







Mine down to the thick waste band at the base of the VL12  
Send to Dump, capture as VL11\_VL12.






Mine out the VL13 and stockpile on the main ROM





Split out the waste band using 80t digger – Send as waste

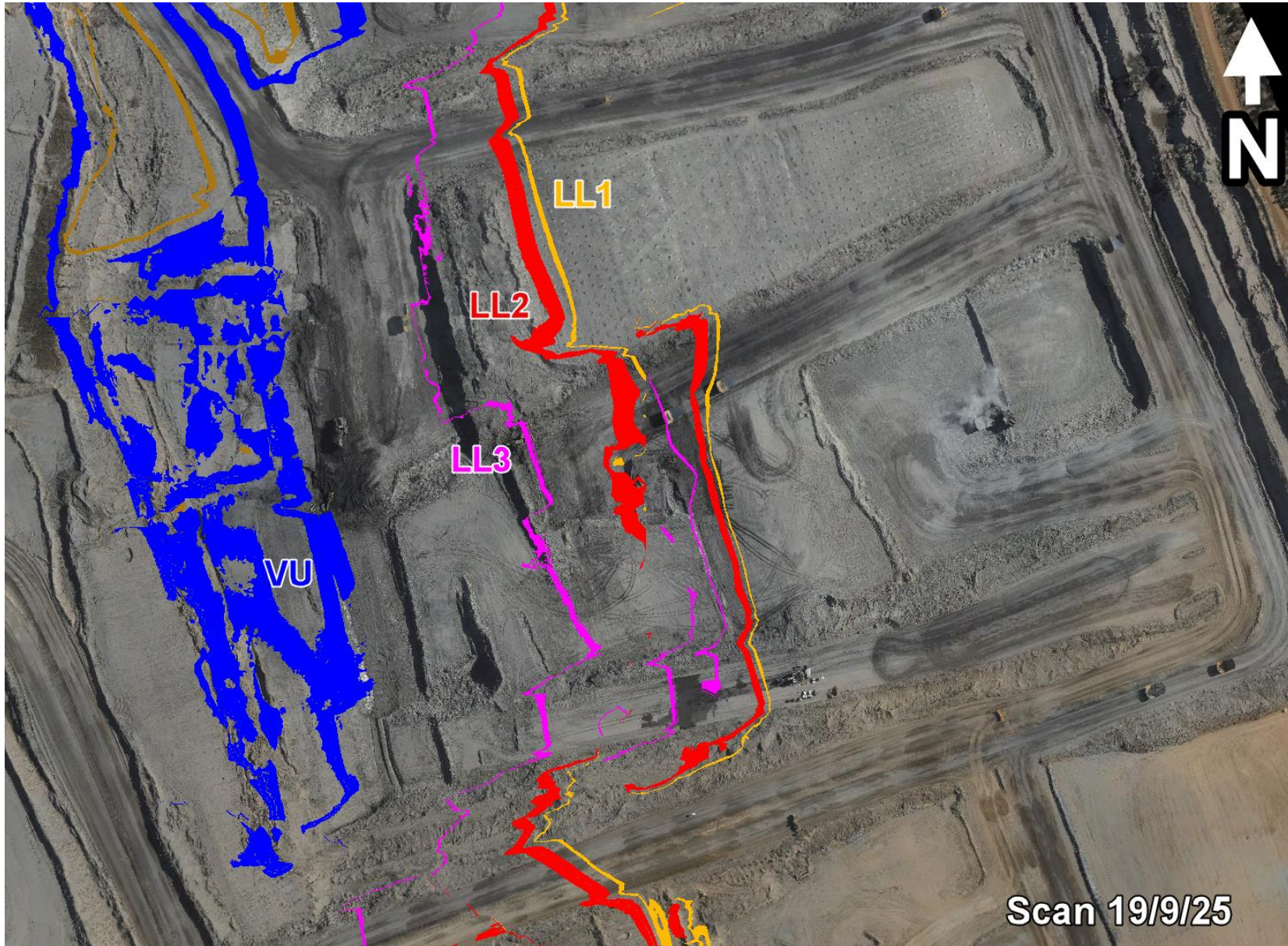




Mine the VL15 and stockpile separately on the main ROM



# T05



COAL CODE	STOCKPILE	COMMENTS
C_LL1	SP_B	Western Side
C_LL2T_LL2B	SP_C	
C_LL3B	SP_R	
C_VU1_VU3	SP_O	Use SP_D as overflow



# T05/S01

COAL CODE	STOCKPILE	COMMENTS
C_LL1	SP_B	Western Side
C_LL2T_LL2B	SP_U	
C_LL3B	SP_R	Use SP_S as overflow
C_VU1_VU3	SP_O	Use SP_D as overflow
C_VU1_VU3_FA	SP_I	

Faulted Repeat VU -  
Send to SP\_I





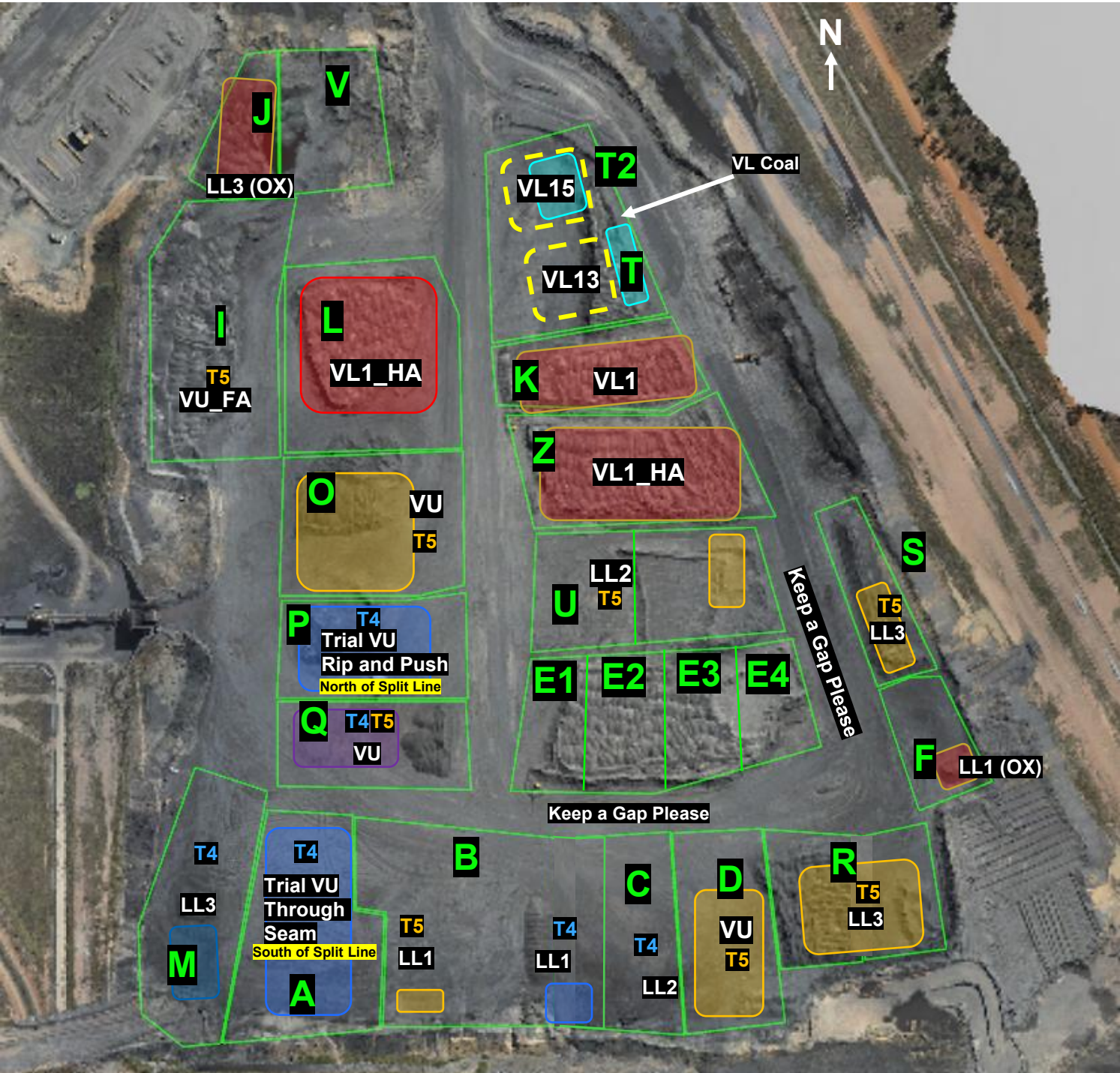
# T05/S02

COAL CODE	STOCKPILE	COMMENTS
C_LL1	SP_B	Western Side
C_LL2T_LL2B	SP_U	
C_LL3B	SP_R	Use SP_S as overflow
C_VU1_VU3	SP_O	Use SP_D as overflow





# ROM







31/08/25



Communicate any direct feed start and finish time to CHPP control.

**Currently Running Blend 4 (VU Trial)**  
**then Blend 2**  
**then Blend 3**

**Auto trucks dumping LL2 on both C and D. Utilise whichever stockpile is available.**

**Auto trucks dumping VU on both O and Q. Utilise whichever stockpile is available.**

[illegible]



# GEOTECHNICAL HAZARD MAP WITH PREDICTED FAULTS

Olive Downs Complex, Wednesday, September 17, 2025

THIESS BlueView

