

ODC Daily Coaling Plan

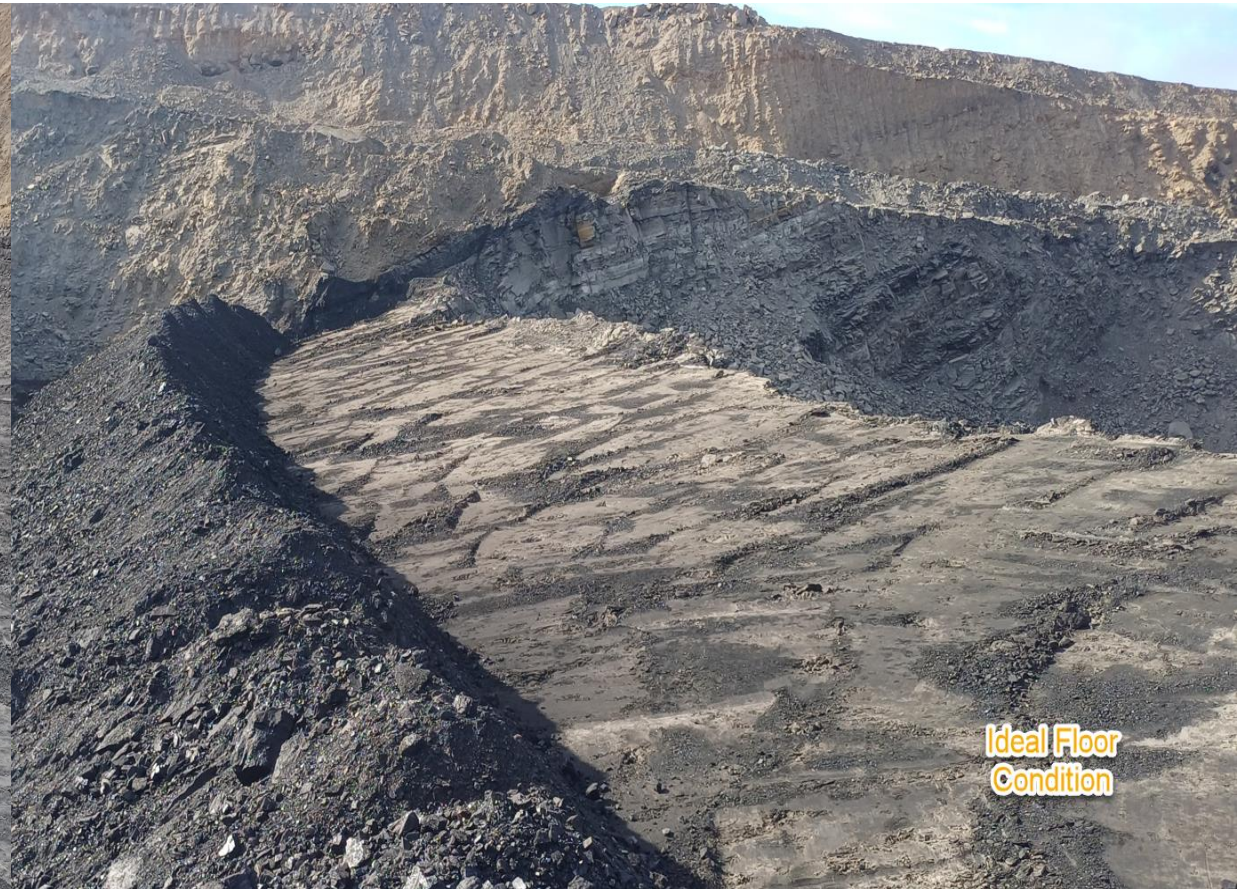
24/10/2025

Geologist Contact: 0473 223 132

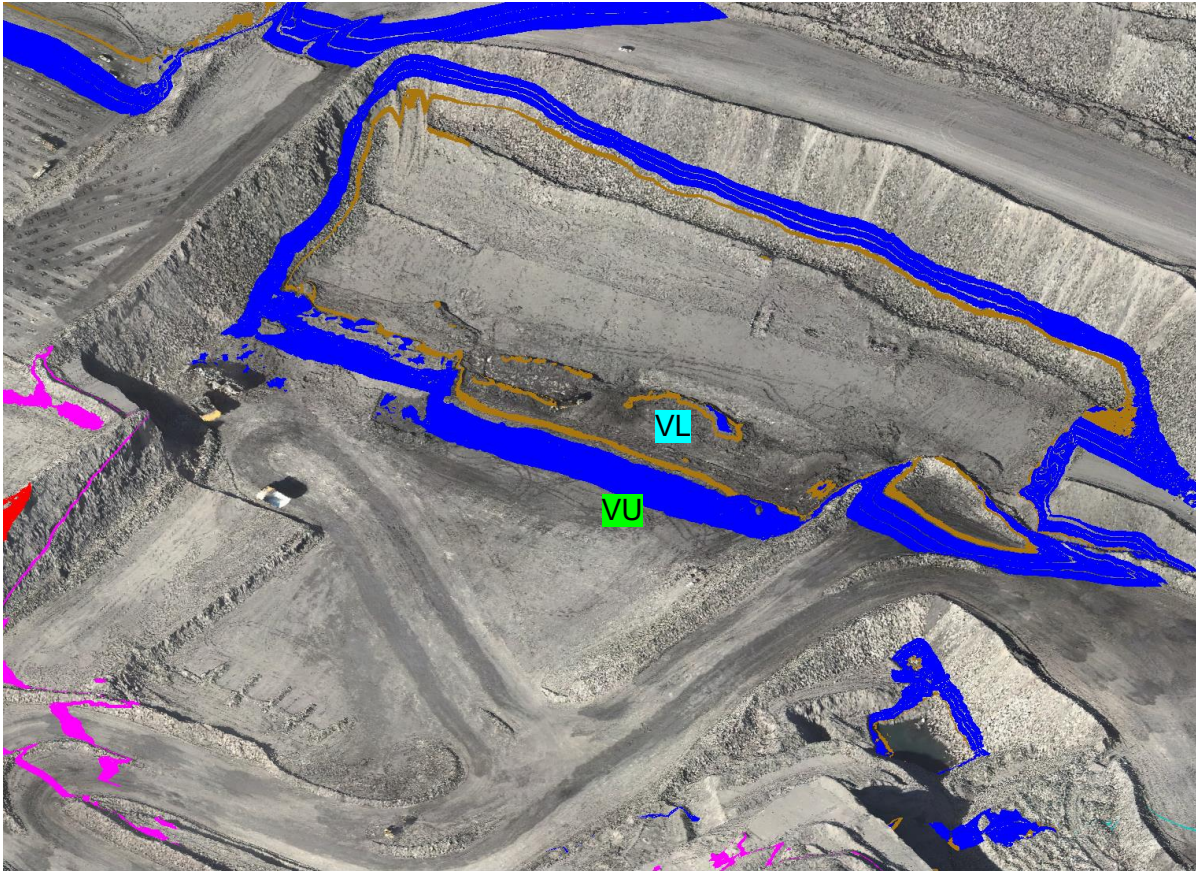


Location	Coal Type	Destination	Comments
T03	C_VU1_VU3	SP_L	
	C_LL3B	SP_U	
	C_VL13	SP_T1	
	C_VL15	SP_T2	
T04	C_LL1	SP_N	
	C_LL2T_LL2B	SP_A	
	C_LL3B	SP_M	
	C_VU1_VU3		
T05	C_LL1	SP_B	
	C_LL2T_LL2B	SP-P	
	C_LL3B	SP_R	
			SP_Loc Overflow
Location	Coal Type	Destination	Comments
T03 – VL Coal	C_VL11_VL12	Waste	Capture as C_VL11_VL12
	C_VL13	SP_T1	
	C_VL15	SP_T2	
	C_VL13	SP_E2	Only if loaded by 9800
	C_VL15	SP_E1	Only if loaded by 9800
	C_VL1	SP_K	Full VL1 Seam only from topload

Ideal Roof and Floor Conditions



T03/S01



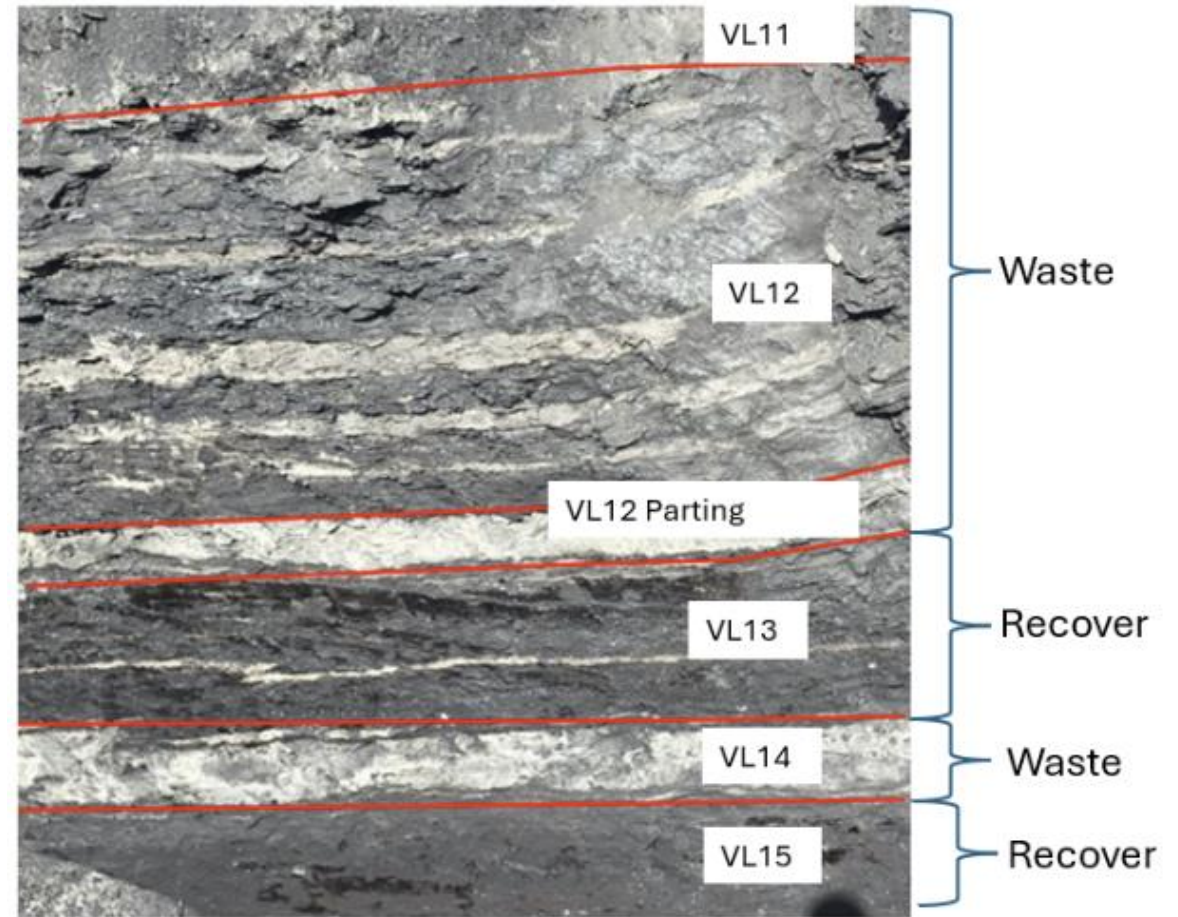


**Any coal loaded
by a 9800 is to
go to either
SP_E1(VL15) or
SP_E2 (VL13)**

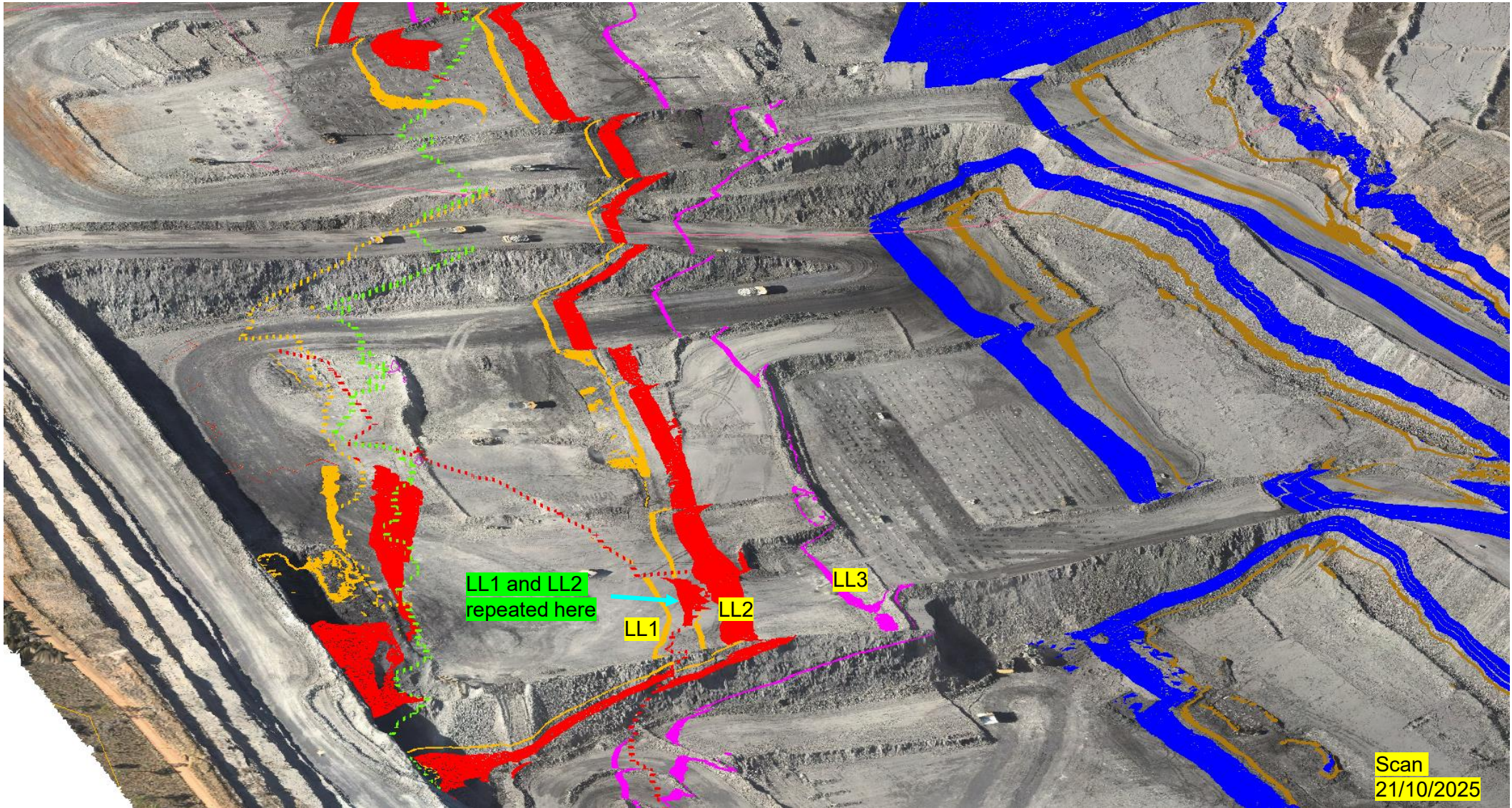
VL1 T03 Trial Instructions

Fresh coal must not be delayed

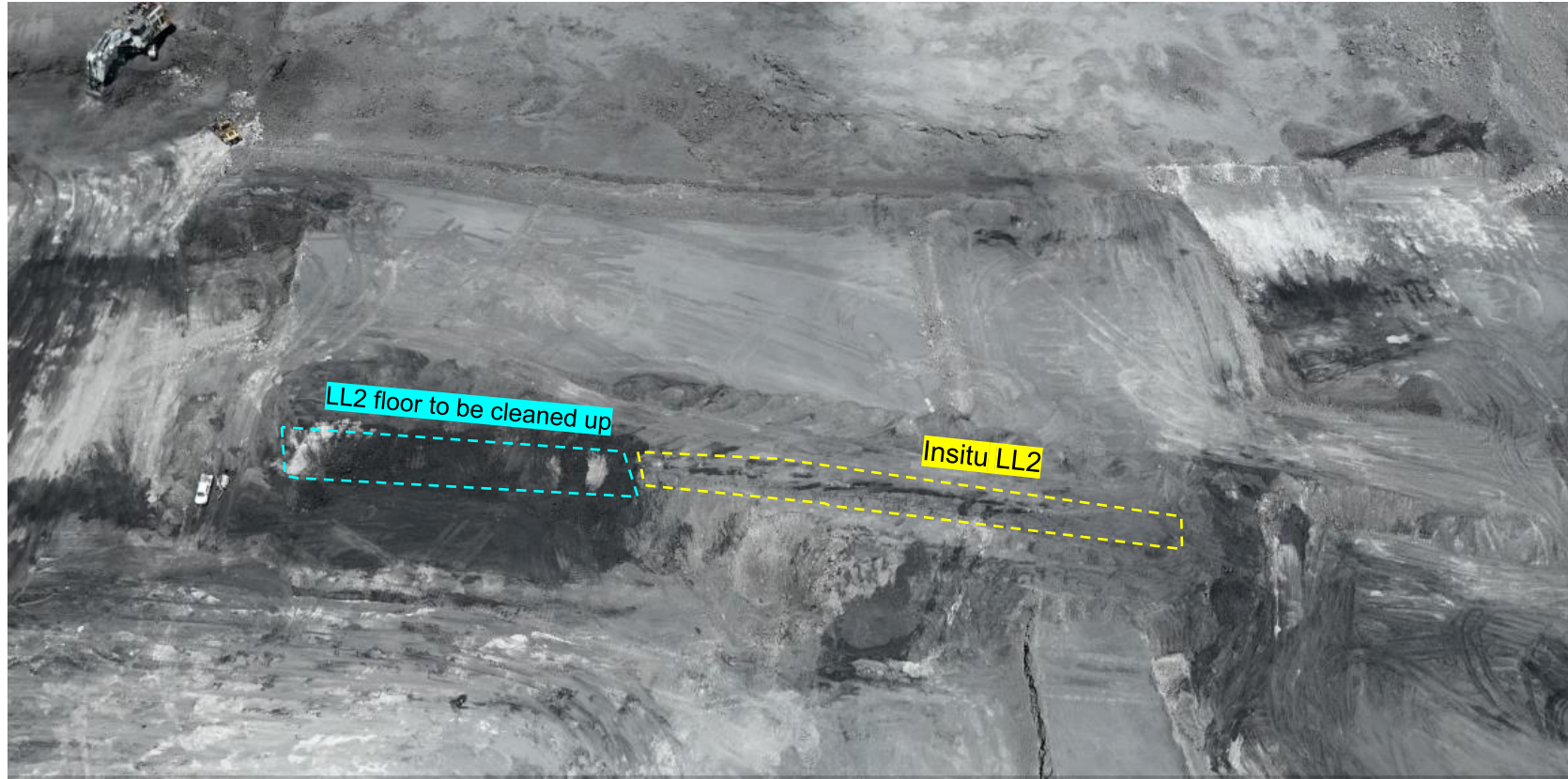
- VL13 and VL15 must be recovered in accordance with industry best practice.
- Ensure the roof and floor are properly cleaned using small excavators, avoiding dozer use in these areas.
- The parting between VL13 and VL15 must be wasted and correctly surveyed.
- The VL to be brought down with each VU flitch, VL is not to be left more than 8m (2 flitches) in the low wall.



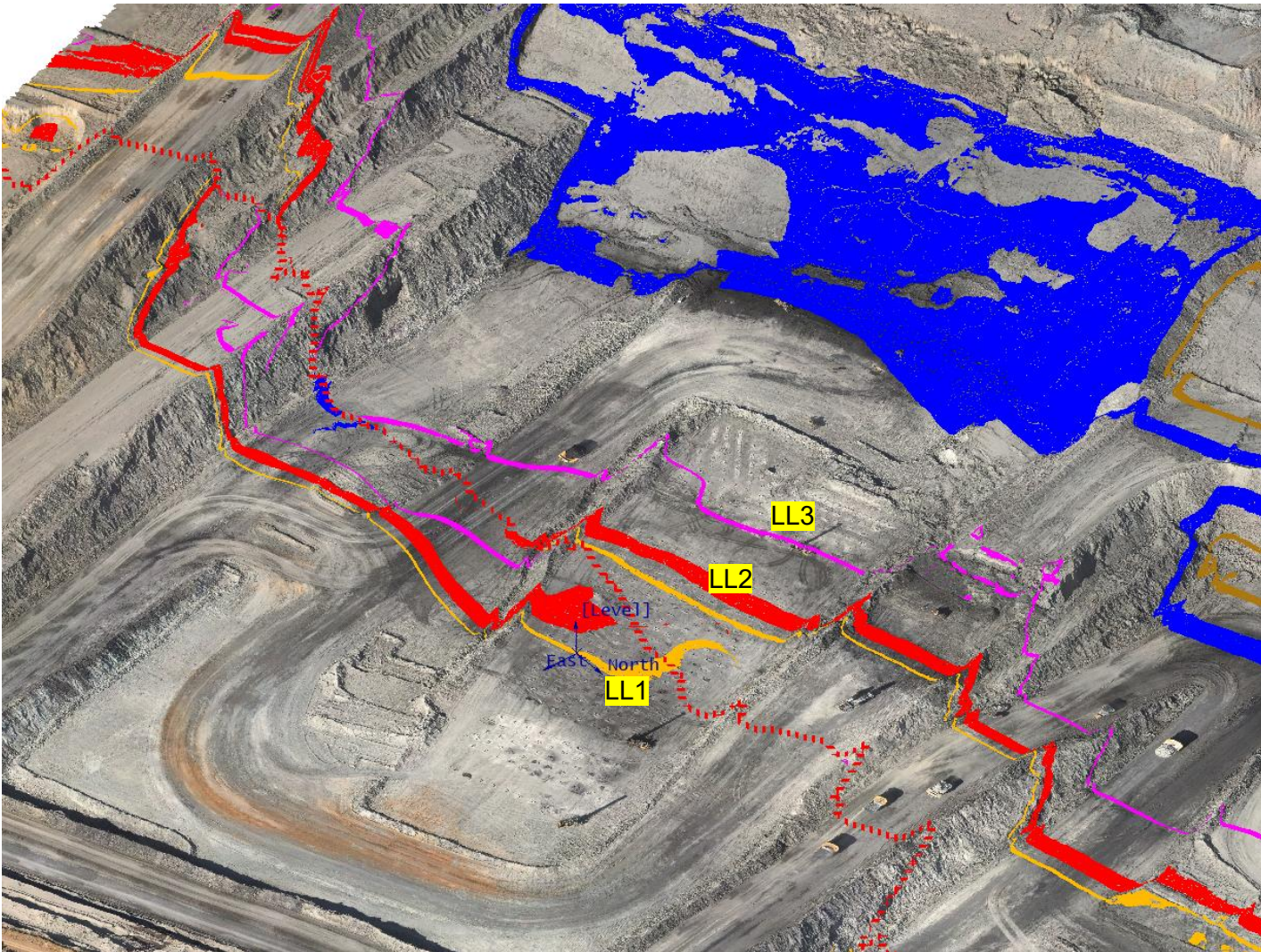
T04



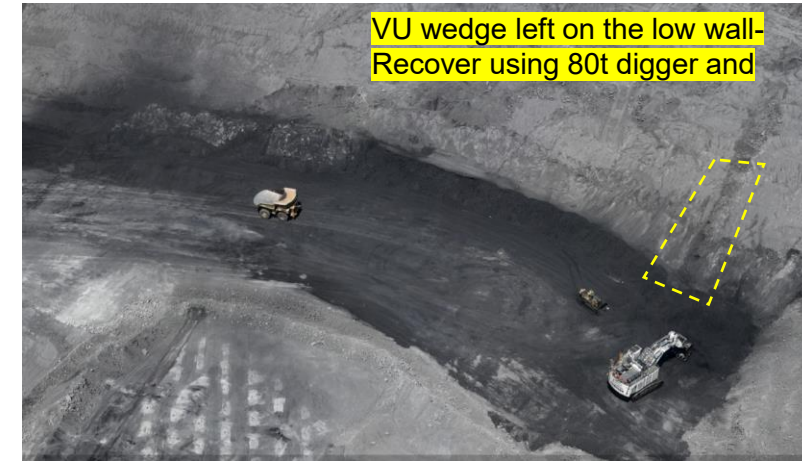
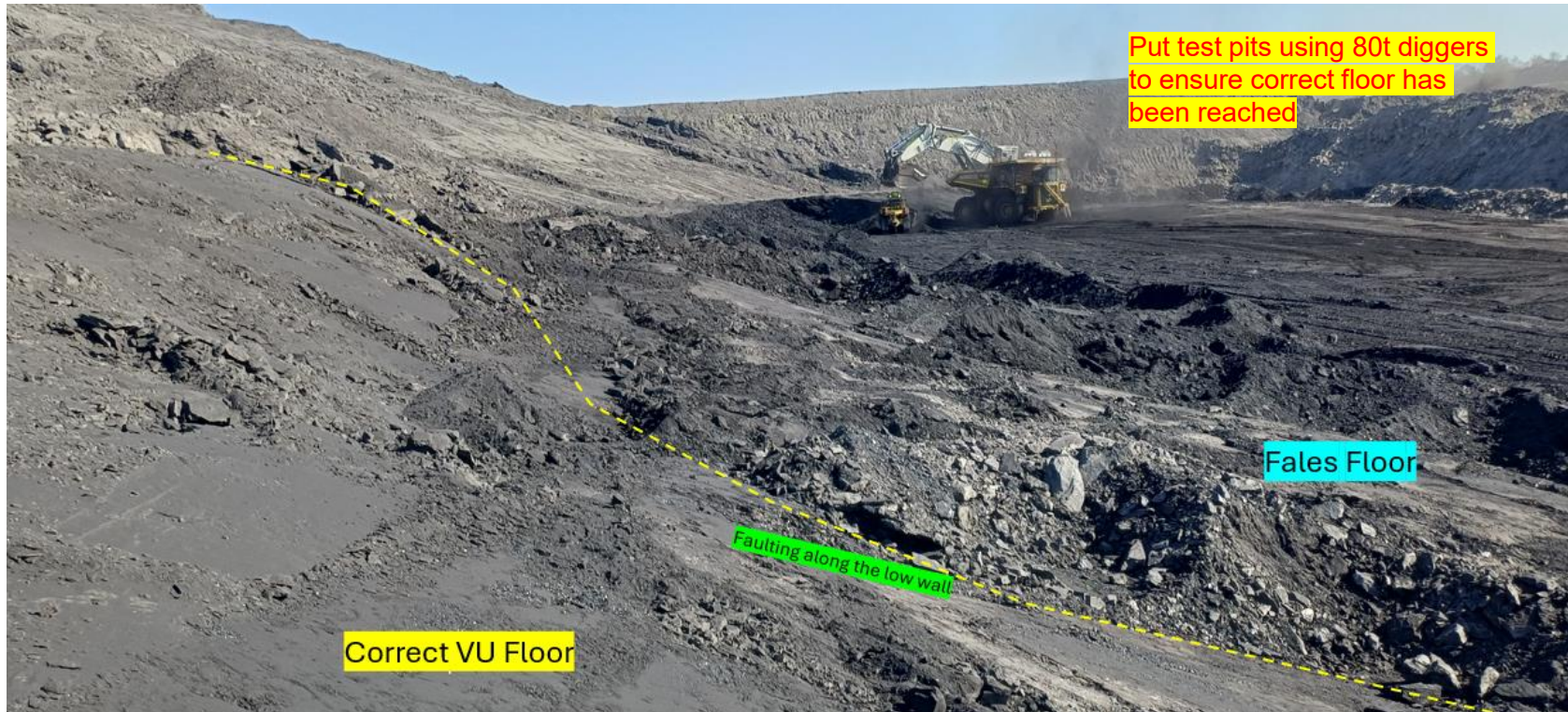
LL2 floor has been disrupted by the large excavator on the mid section of the bench



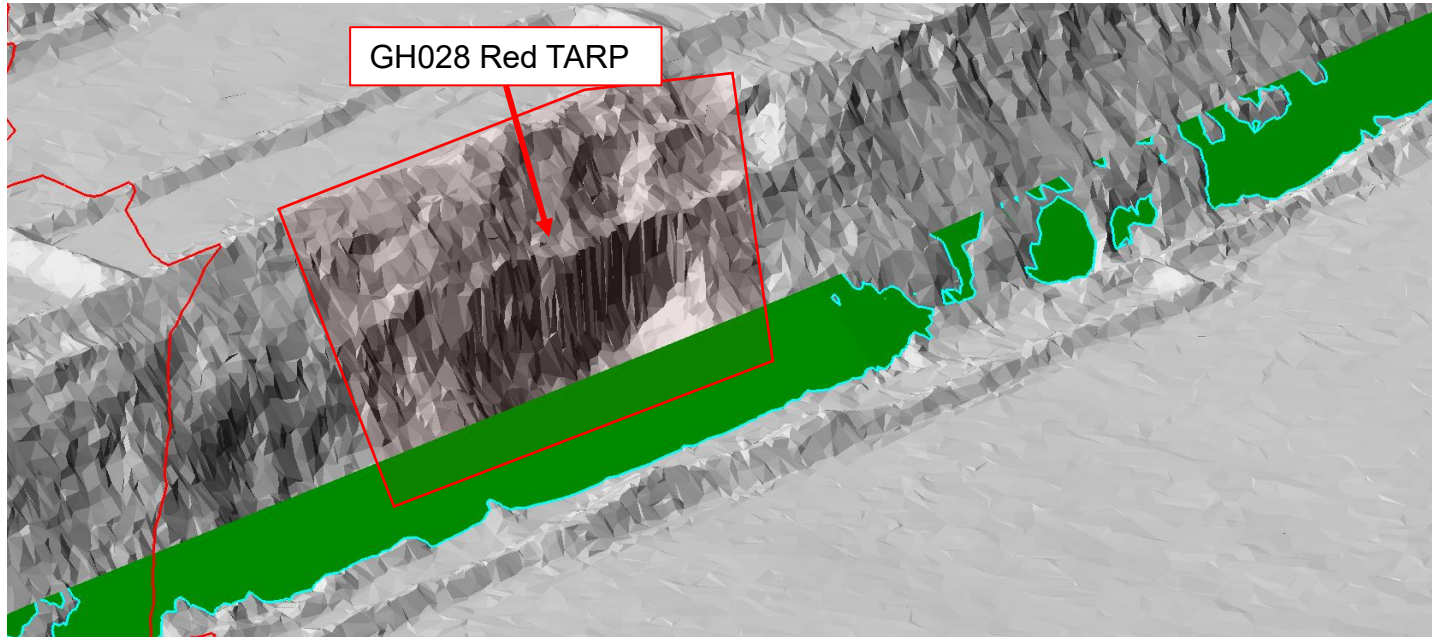
T05



T05

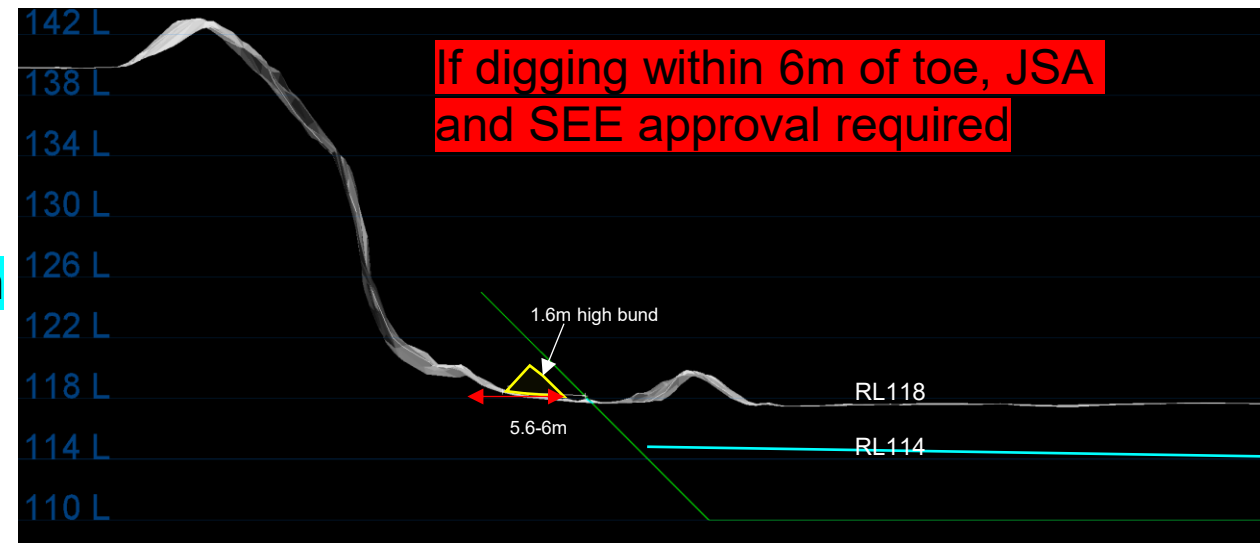
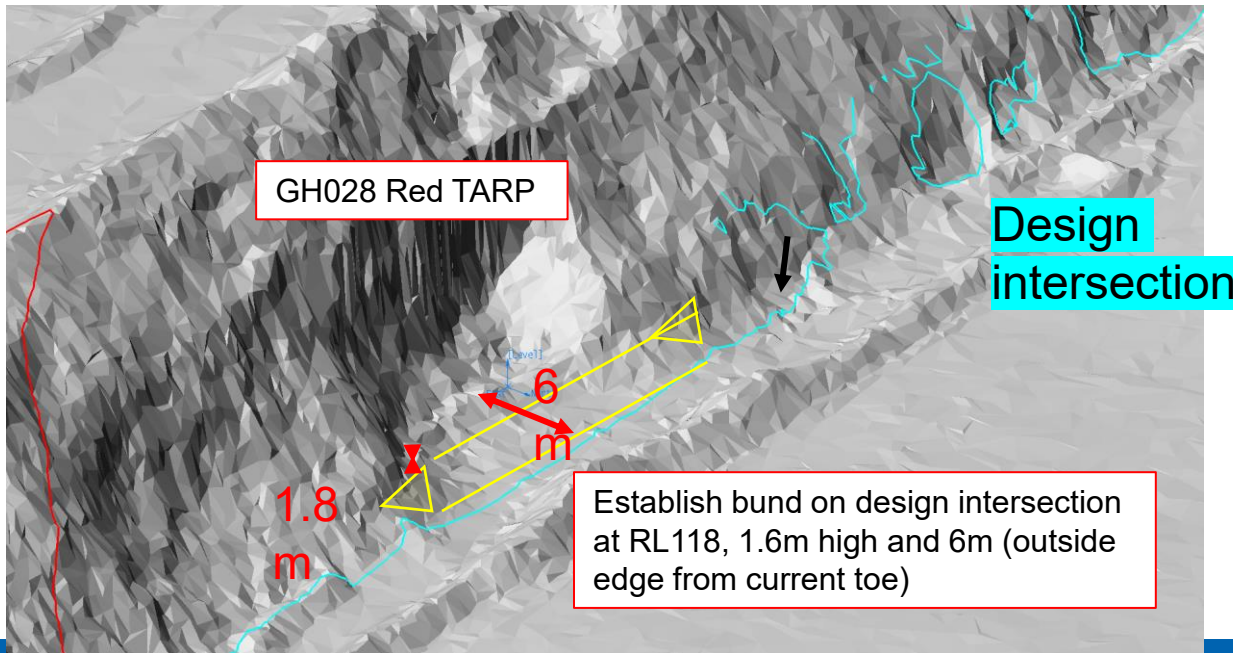
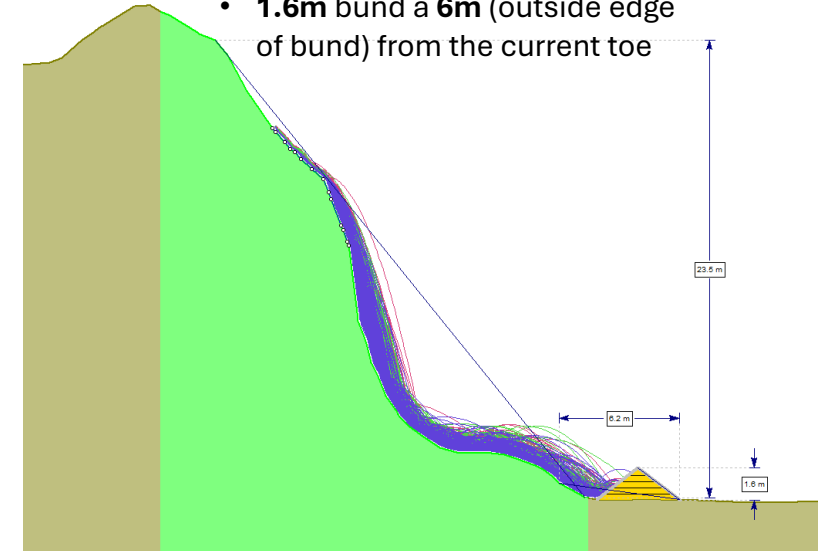


T05 – GH028

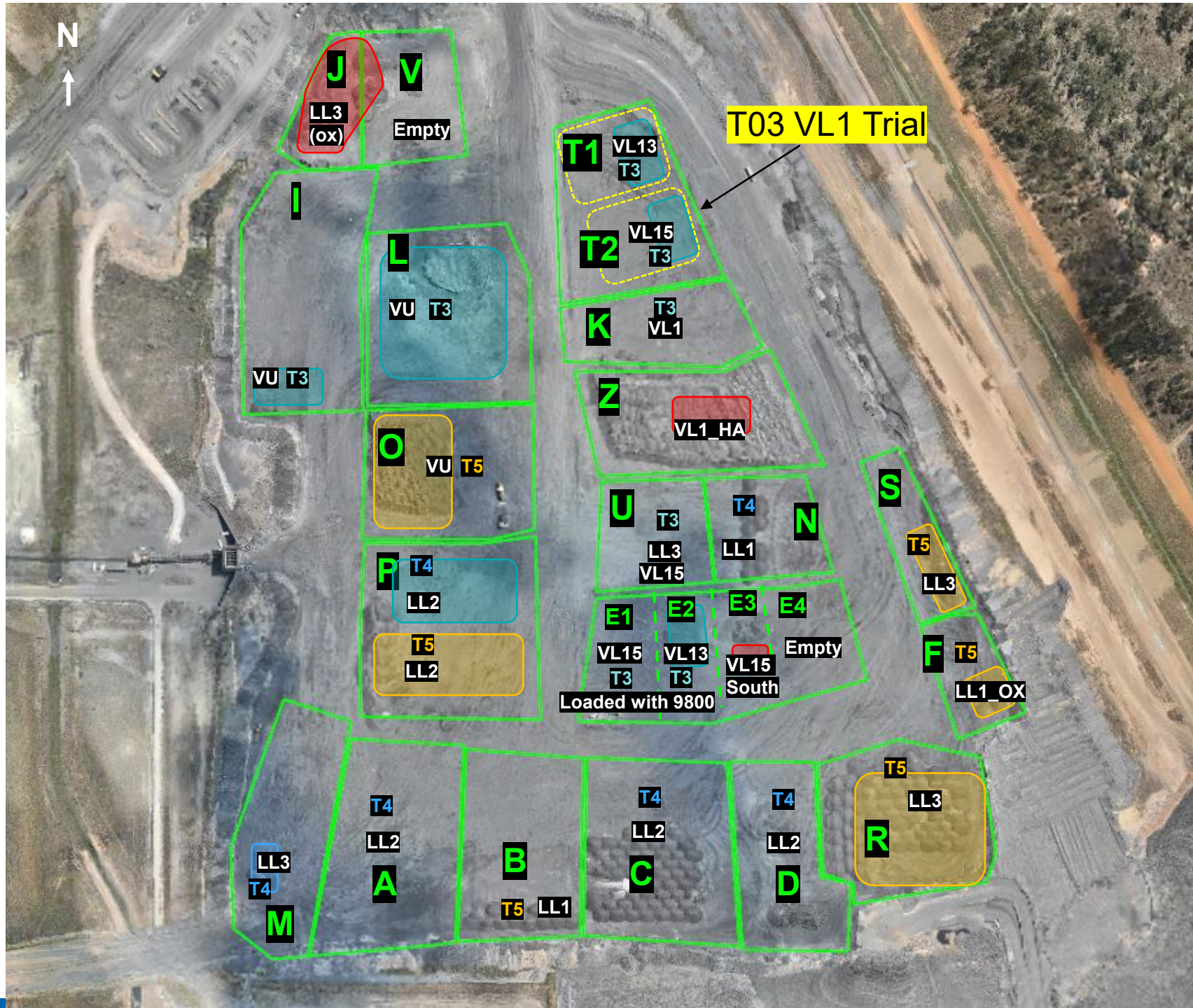


RED TARP Controls:

- **1.6m** bund a **6m** (outside edge of bund) from the current toe



ROM



THIASS

Tip Stockpiles South to North

CHPP Coal Feed Sequence

Communicate any direct feed start and finish time to CHPP control.

Continue

Currently Washing Blend 6

Once Stockpile C is exhausted change to Blend 1
Once Stockpile P is exhausted change to Blend 2
Once Stockpile S is exhausted change to Blend 3
Once Stockpile M is exhausted change to Blend 4

In truck blending required for all current blends

When running Stockpile O or L - Take material from front of pile if Autotrucks are dumping on the back of the pile

	Blends								
	Feed 1	Feed 2	Feed 3	Ratio	ROM Loaders	ROM Trucks	Direct Feed	Comments	active
Blend 1	SP-L	SP-P		1:1				1 x VU (T03S01): 1 x LL2 (T05S01)	
Blend 2	SP-L	SP-S		2:1				2 x VU (T03S01): 1 x LL3 (T05S01)	
Blend 3	SP-L	SP-R		2:1				2 x VU (T03S01): 1 x LL3 (T05S01)	
Blend 4	SP-L	SP-M		2:1				2 x VU (T03S01): 1 x LL3 (T04S01)	
Blend 5									
Blend 6	SP-L	SP-C		1:1				1 x VU (T03S01): 1 x LL2 (T04S01)	x
Wet weather									



0100200300400500

Metres

Scale @ A3: 1:12,000

Coordinate System: GDA 1994 MGA Zone 55

Red TARP Hazard

Amber TARP Hazard

Yellow TARP Hazard

Unassigned TARP Hazard

SSE Area of Responsibility

Predicted Faults

New Fault

Caesar

Hannibal

Churchill

Mugabe

Cyrus

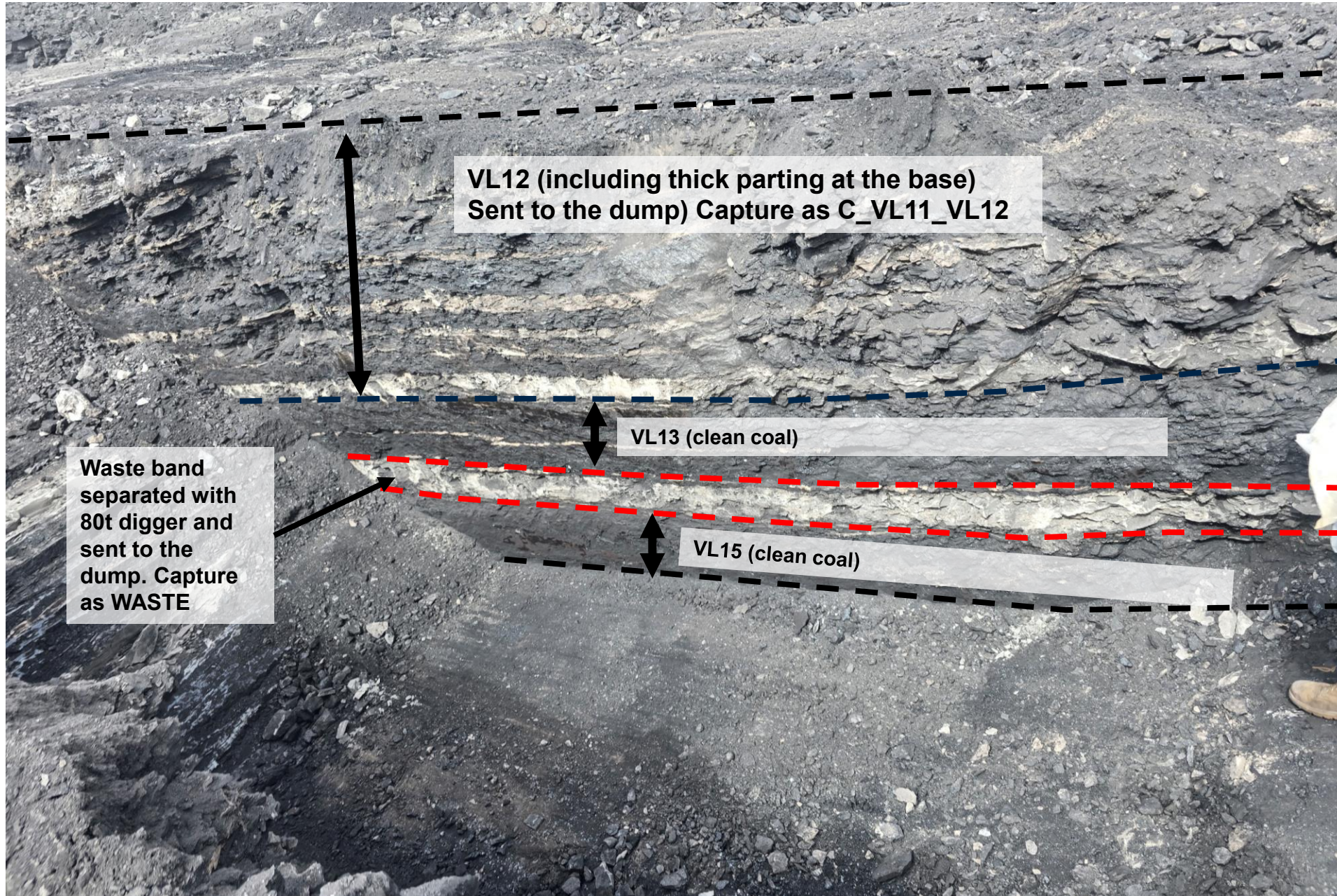
Ghengis


Kim

Copyright: This document is confidential and remains the property of Thies Pty Ltd. It must not be disclosed or copied by any member or used for any other project without the written approval of Thies Pty Ltd.

Appendix 1: VL1 SPLITTING GUIDE (T03 & T04)

T04 & T03/S01 – VL Coal Mining – Only CRS Operators






Mine down to the thick waste band at the base of the VL12
Send to Dump, capture as VL11_VL12.



Mine out the VL13 and stockpile on the main ROM

A photograph of a geological rock face, likely a coal seam or similar sedimentary rock. The rock shows distinct horizontal layering or bedding. A red arrow points to a specific layer, which is identified as a waste band. The text overlay indicates that this band was split out using an 80t digger and is to be sent as waste.

Split out the waste band using 80t digger – Send as waste



Mine the VL15 and stockpile separately on the main ROM