

# ODC Daily Coaling Plan

11/11/2025

Geologist Contact: 0473 223 132

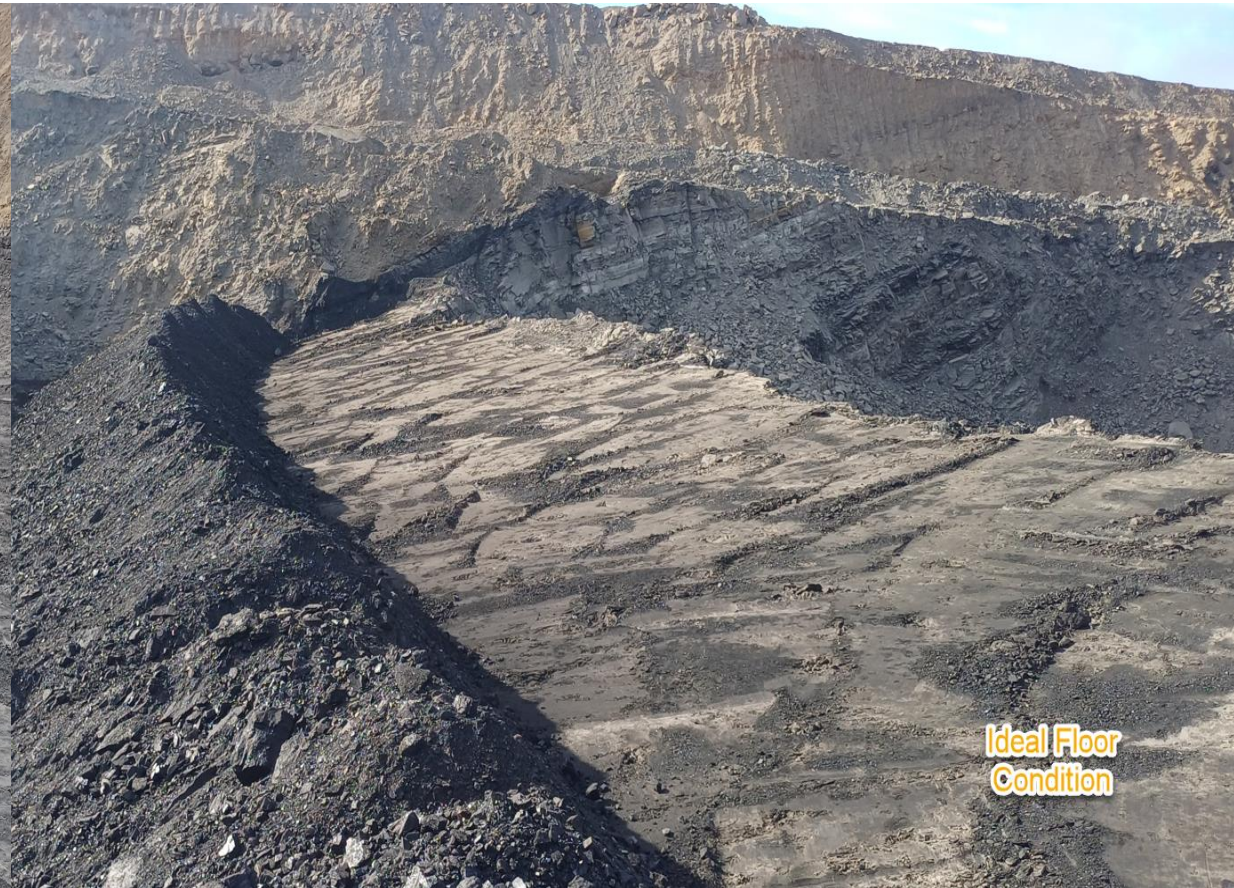


Location	Coal Type	Destination	Comments
T03	C_VU1_VU3	SP_L	SP-W for burnt zone coal
	C_LL3B		
	C_VL13	SP_T	
	C_VL15	SP_S	
T04	C_LL1	SP_N	
	C_LL2T_LL2B	SP_H	
	C_LL3B	SP_V	
	C_VU1_VU3	SP-G	
	C_VL13	SP_P	
	C_VL15	SP_Z	
T05	C_LL1	SP_Y	Overflow to SP-B
	C_LL2T_LL2B	SP_C	
	C_LL3B	SP_M	
	C_VU1_VU3	SP_O	

Location	Coal Type	Destination	Comments
T03 and T04	C_VL11_VL12	Waste	Capture as C_VL11_VL12
VL_PAD	C_VL1	SP-D	Only coal on second lift – See ROM Plan page
VL_PAD	C_VL1	SP-K	

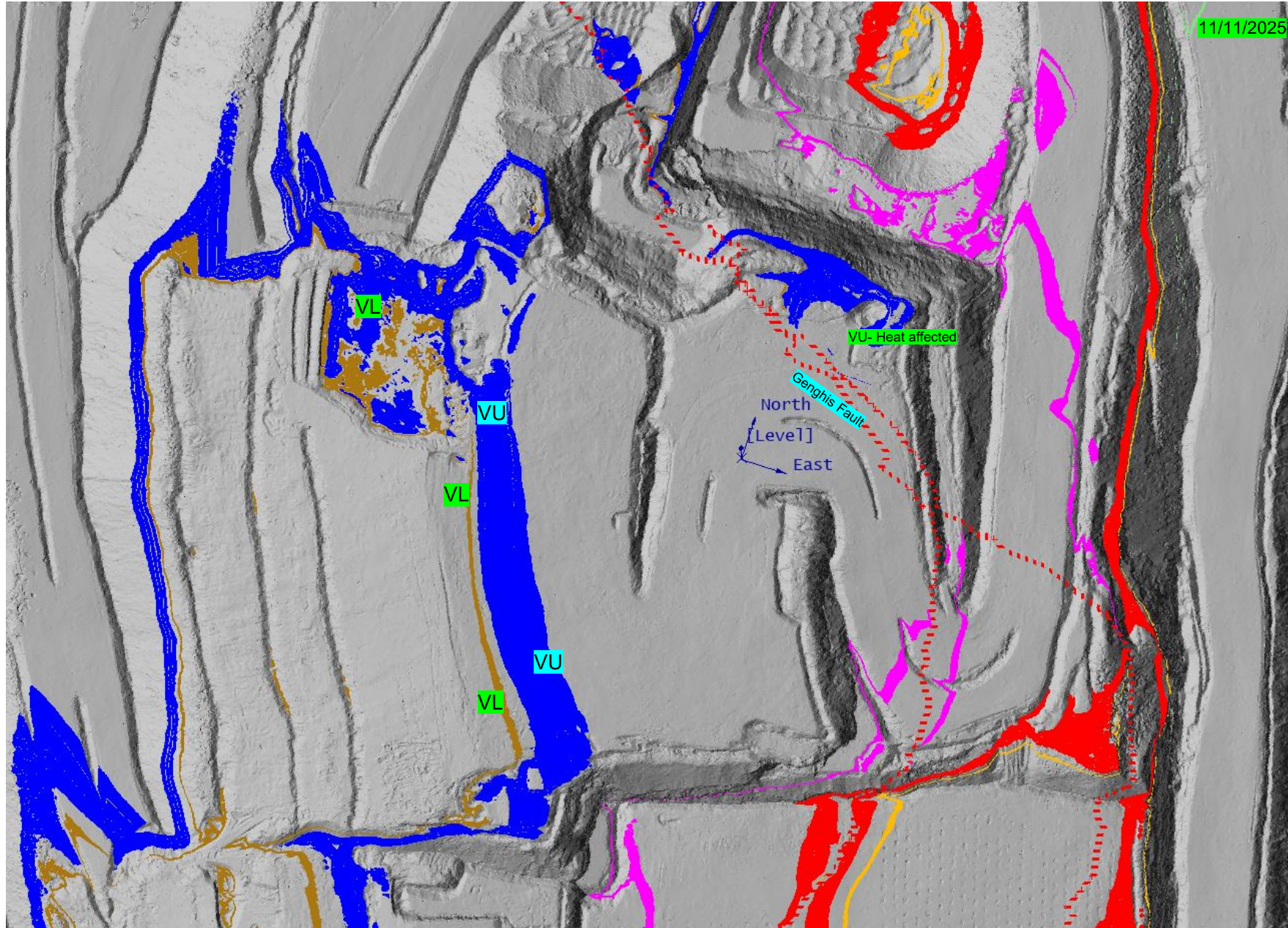


# Ideal Roof and Floor Conditions



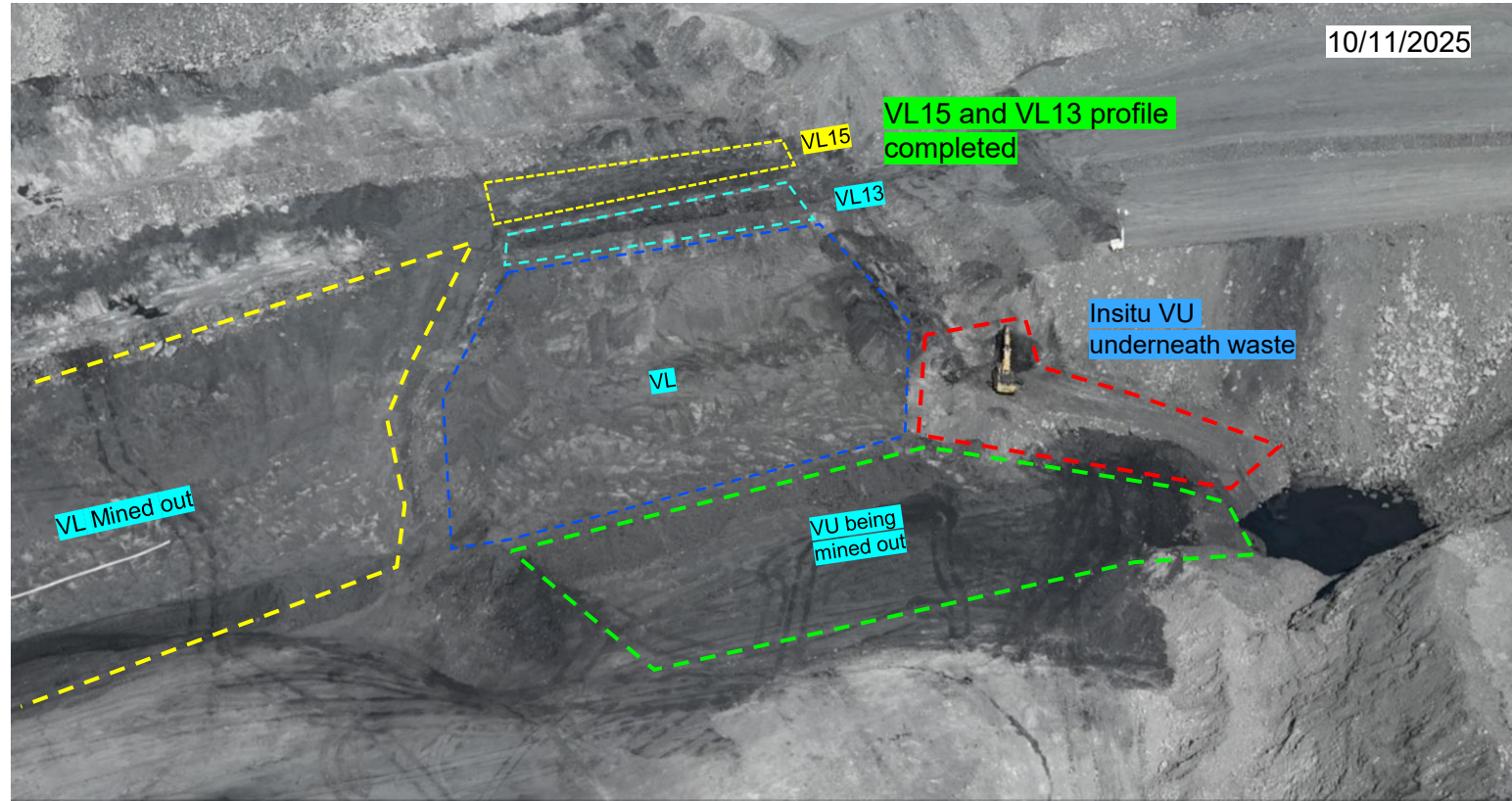


# T03



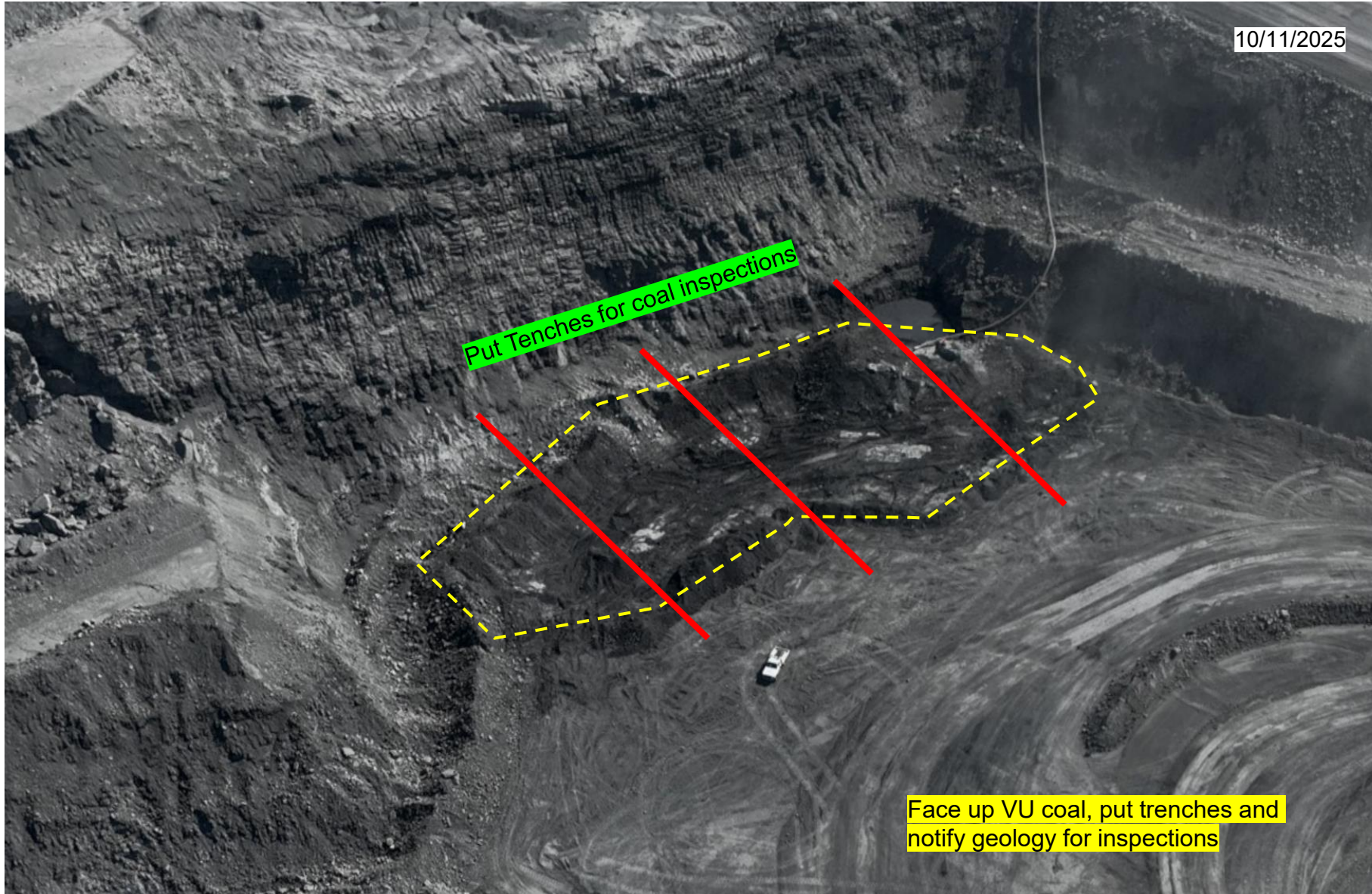


# T03/S01





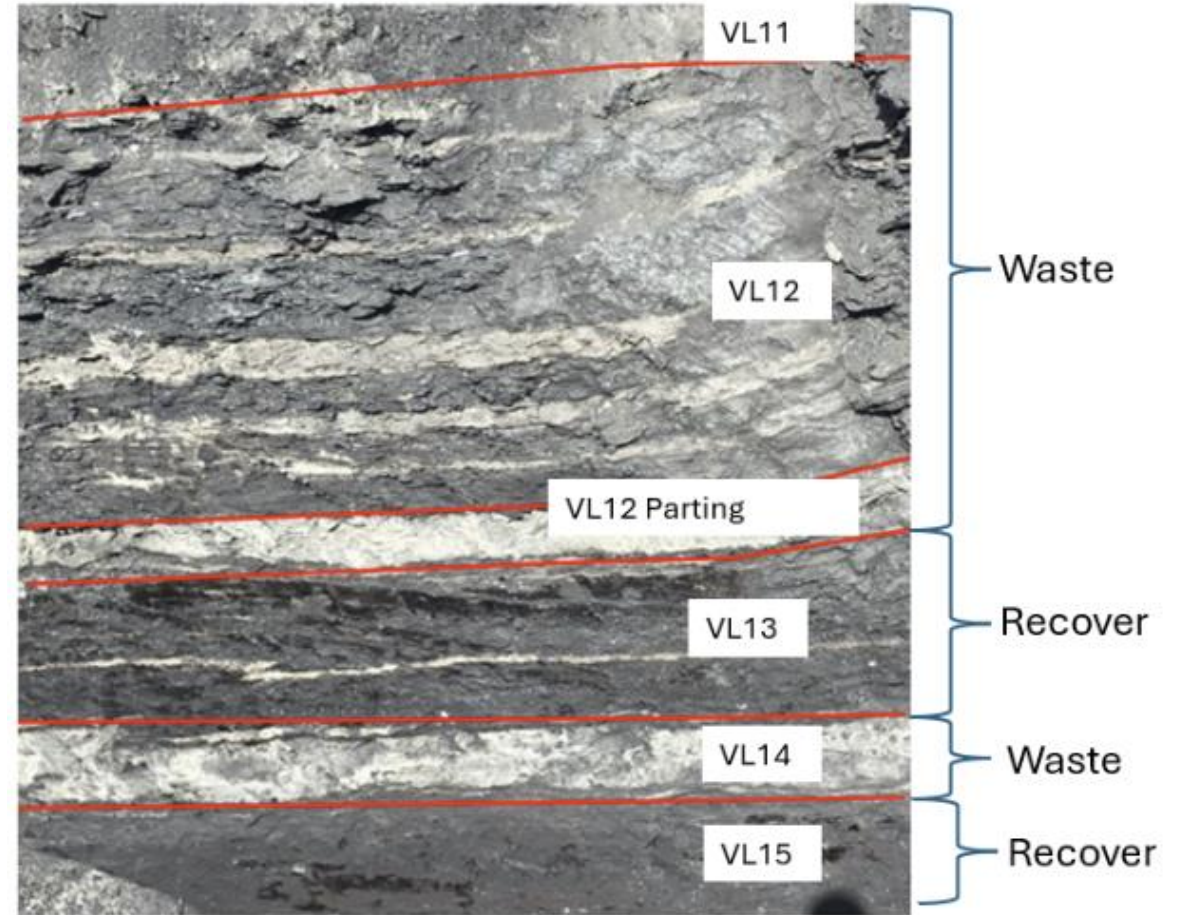
# T03/S02 – VU Near Bunt Zone



## VL1 T03 Trial Instructions

### Fresh coal must not be delayed

- VL13 and VL15 must be recovered in accordance with industry best practice.
- Ensure the roof and floor are properly cleaned using small excavators, avoiding dozer use in these areas.
- The parting between VL13 and VL15 must be wasted and correctly surveyed.
- The VL to be brought down with each VU flitch, VL is not to be left more than 8m (2 flitches) in the low wall.





# T04 / S01

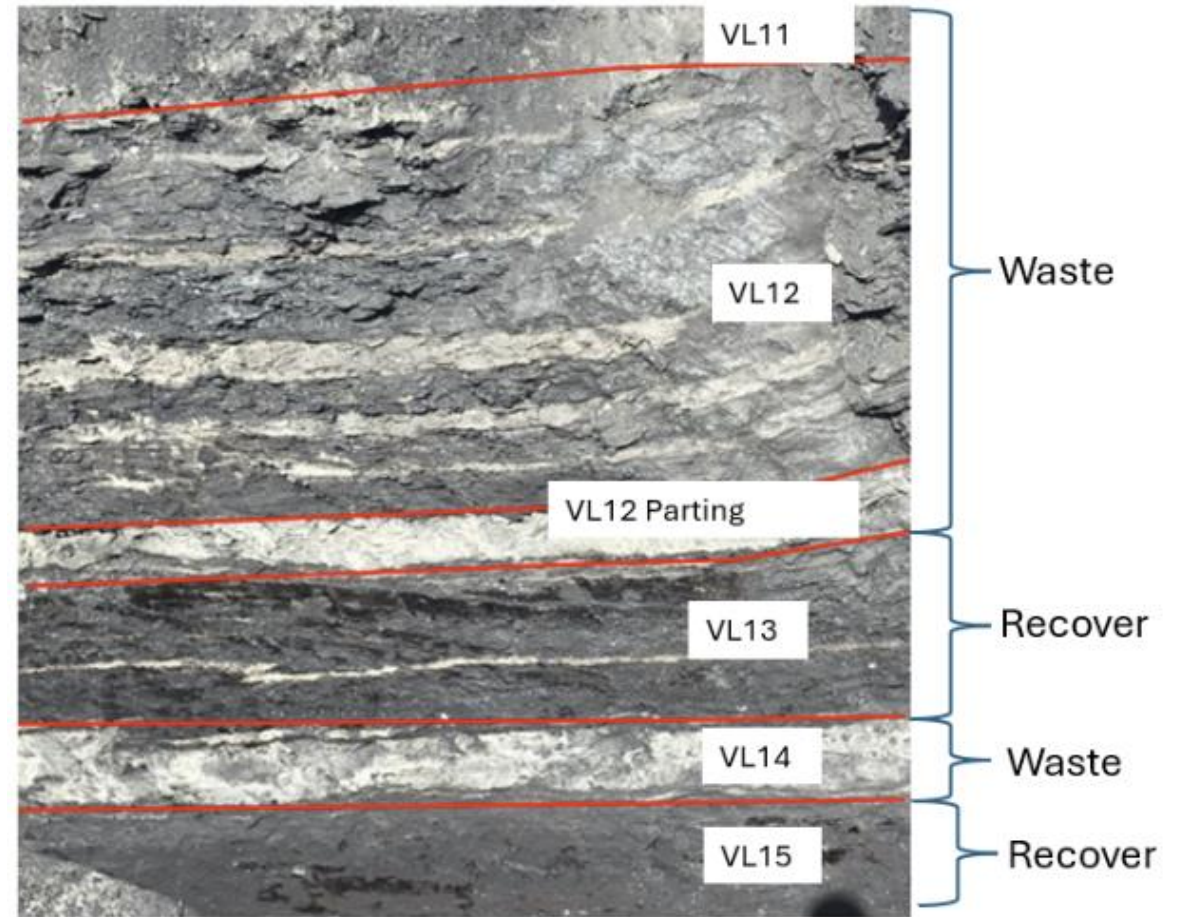




## VL1 T04 and T03 Instructions

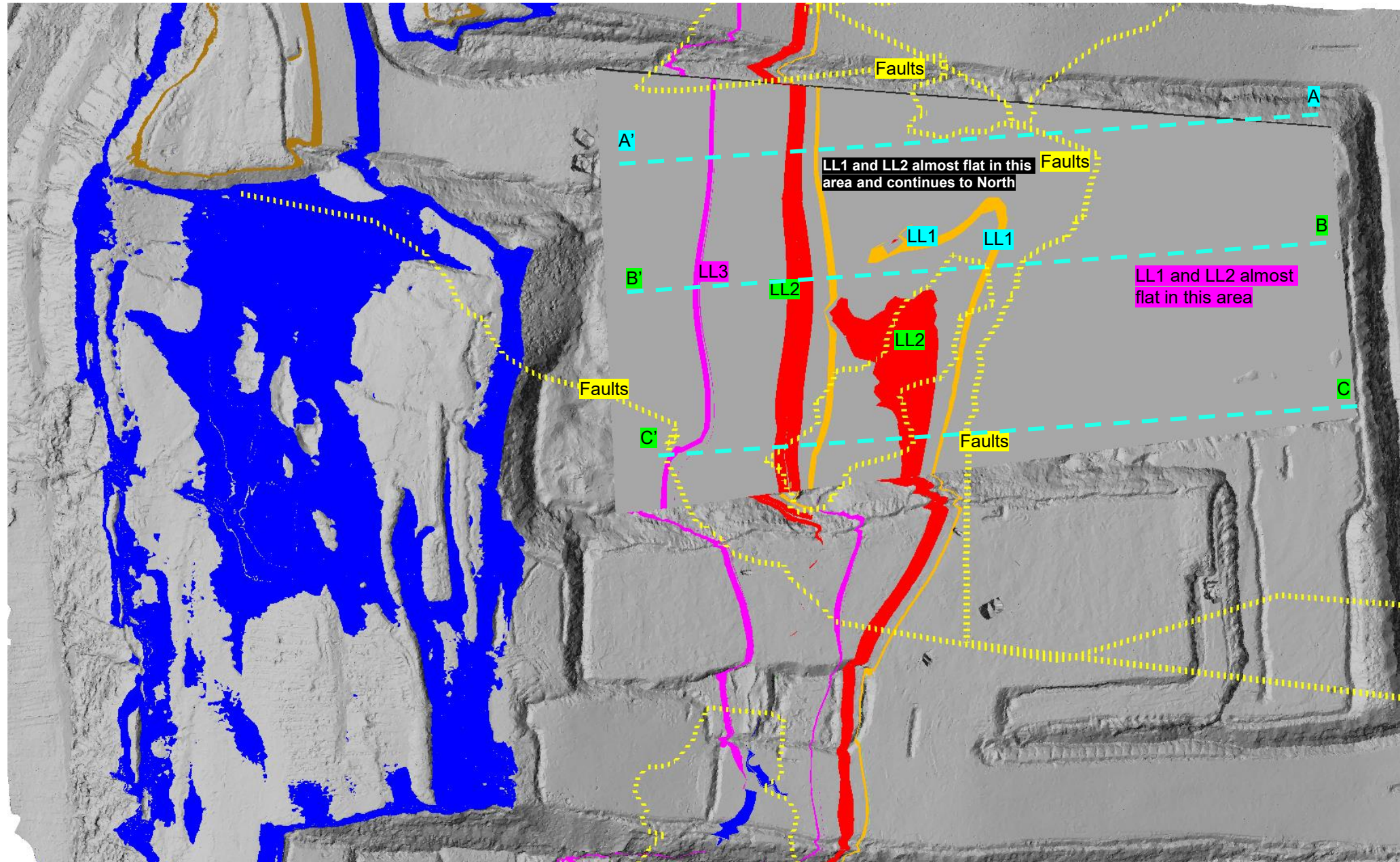
### Fresh coal must not be delayed

- VL13 and VL15 must be recovered in accordance with industry best practice.
- Ensure the roof and floor are properly cleaned using small excavators, avoiding dozer use in these areas.
- The parting between VL13 and VL15 must be wasted and correctly surveyed.
- The VL to be brought down with each VU flitch, VL is not to be left more than 8m (2 flitches) in the low wall.

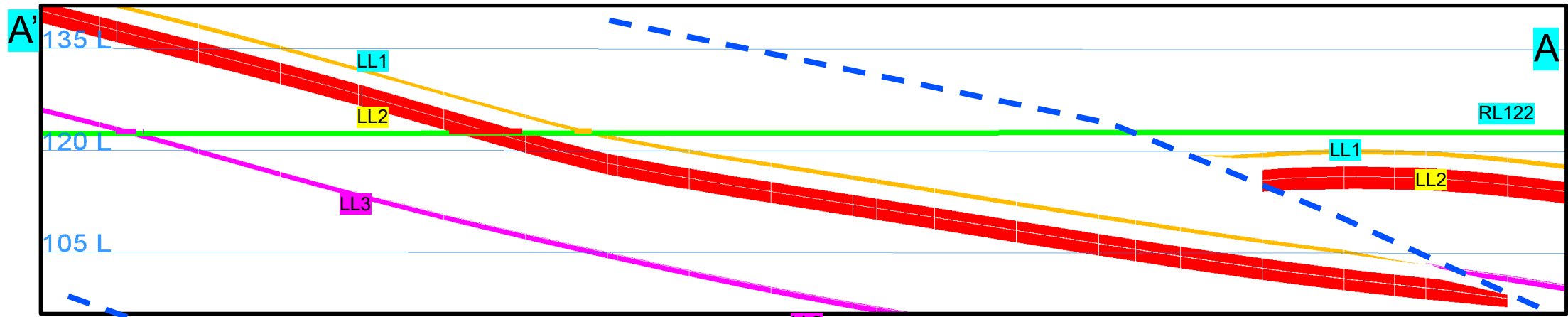




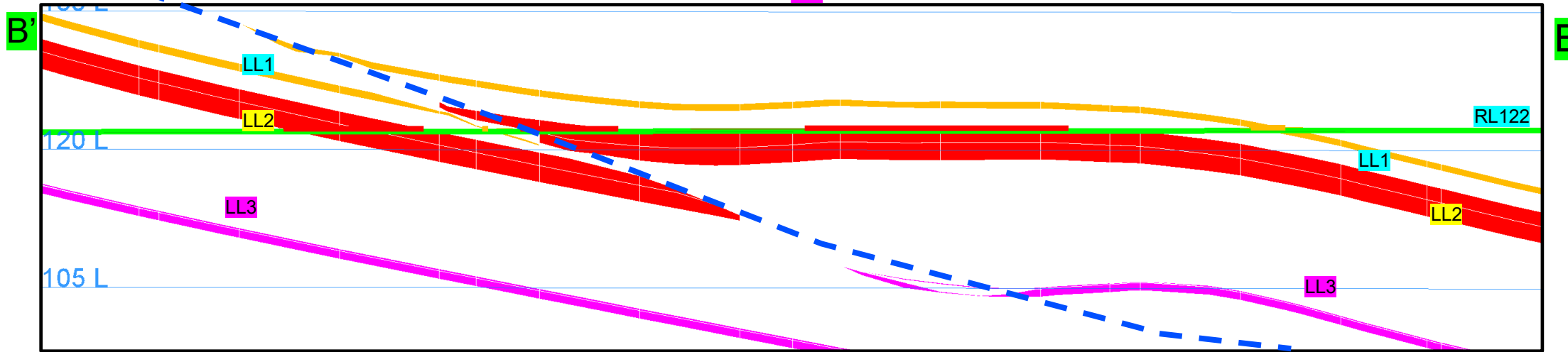
# T05 – RL122 Floor



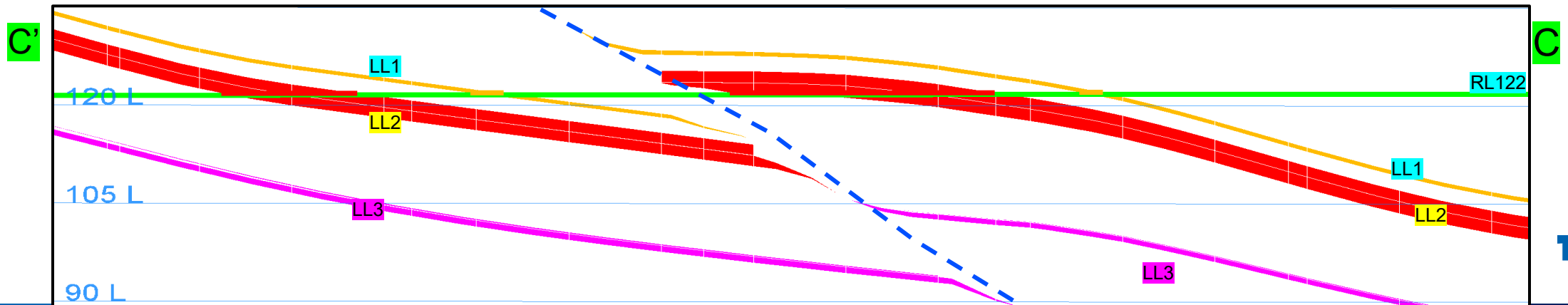




Section 1



Section 2



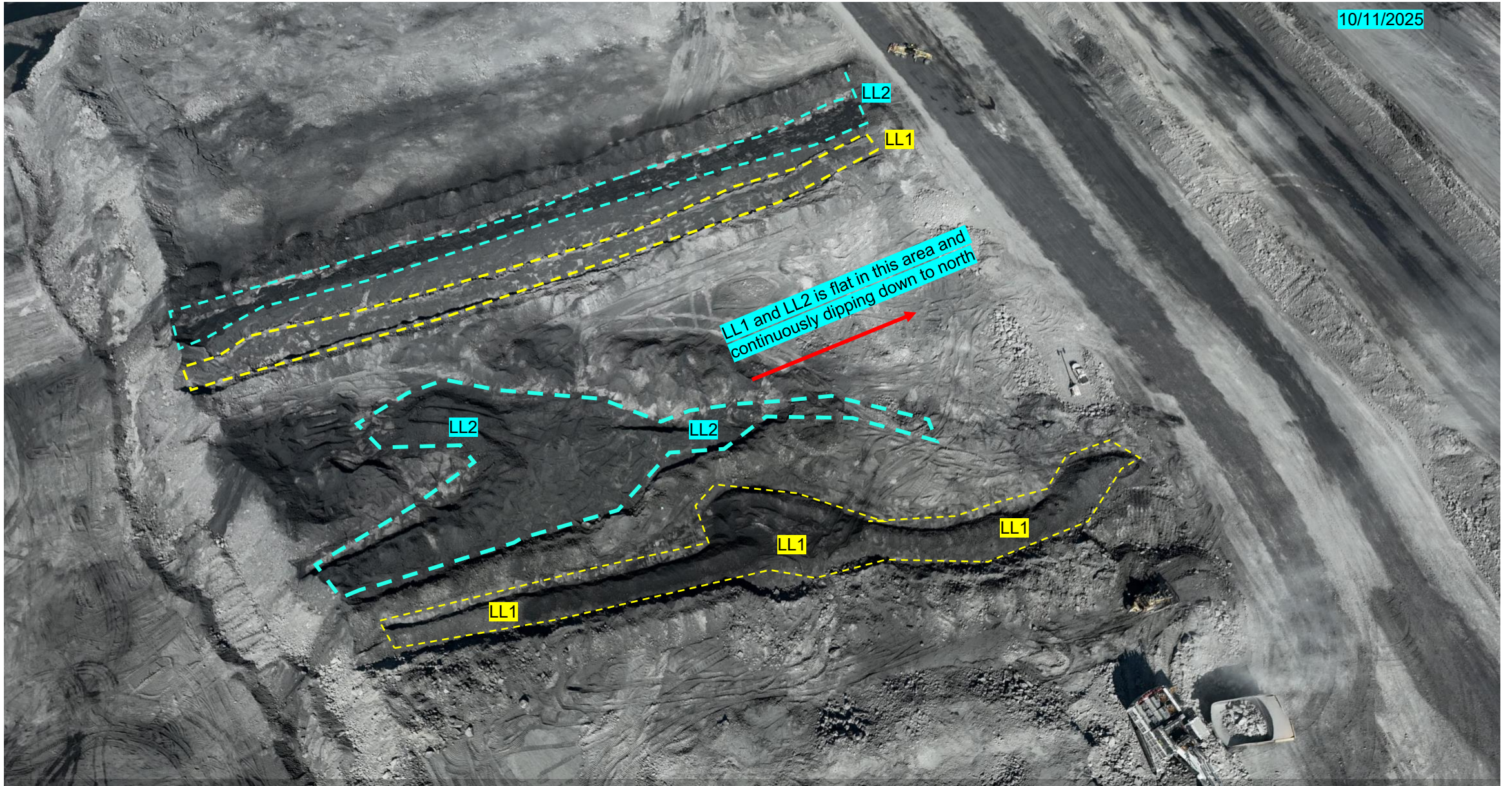
Section 3

**THIESS**

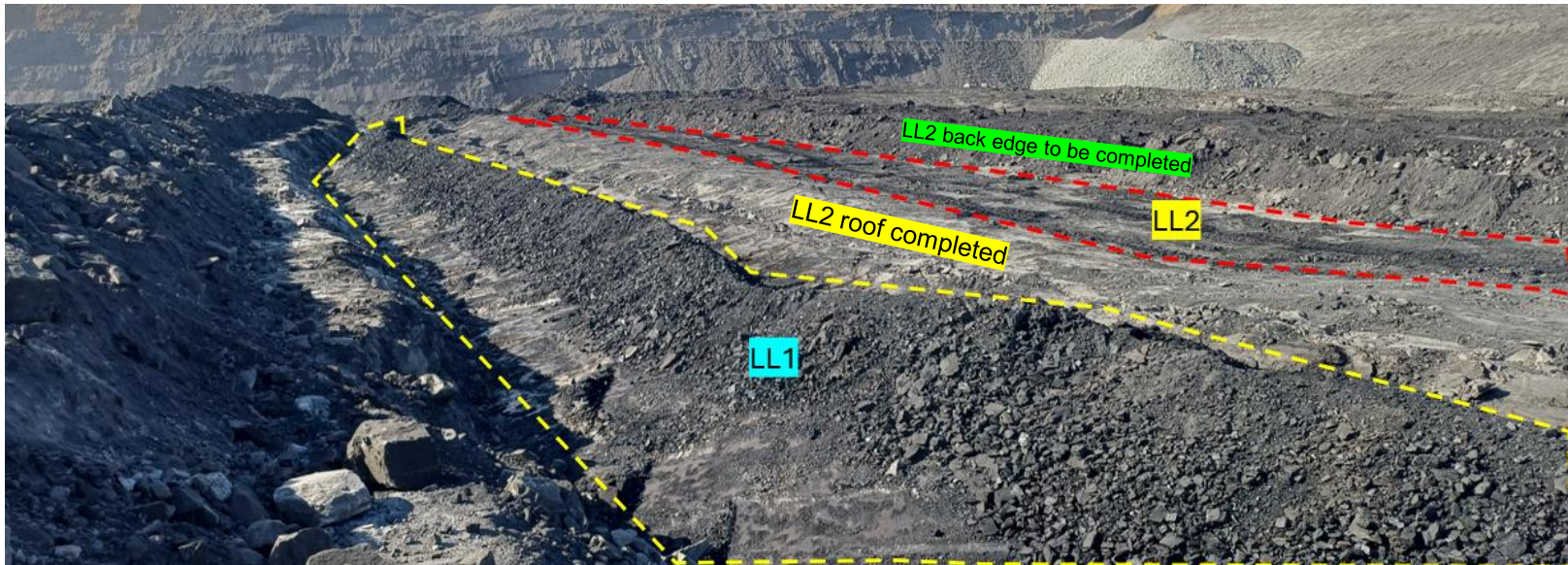
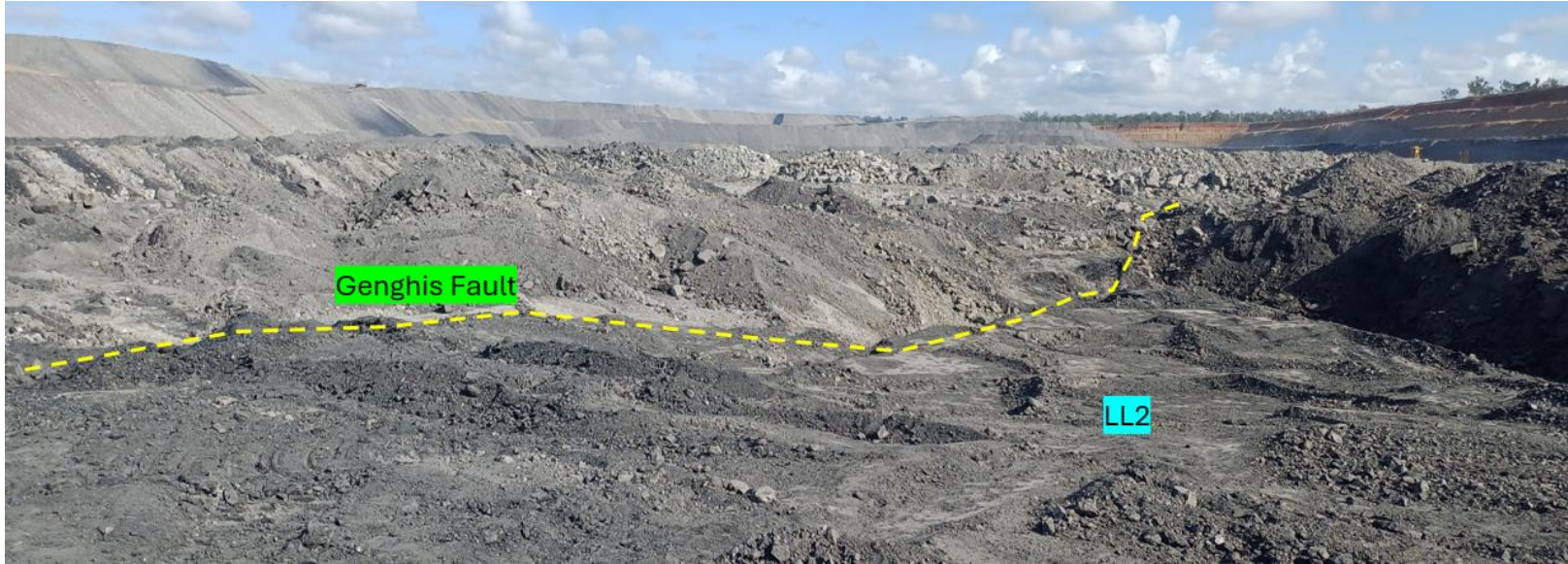


# T05

10/11/2025











1. Send VL coal on second lift first to SP-D
2. Send VL coal SP-K (Push the SP-K southern boundary further south)



# VL-PAD

Moving VL coal to  
VL Pad

1. Send VL coal on second lift first to SP-D
2. Send VL coal SP-K (Push the SP-K southern boundary further south)





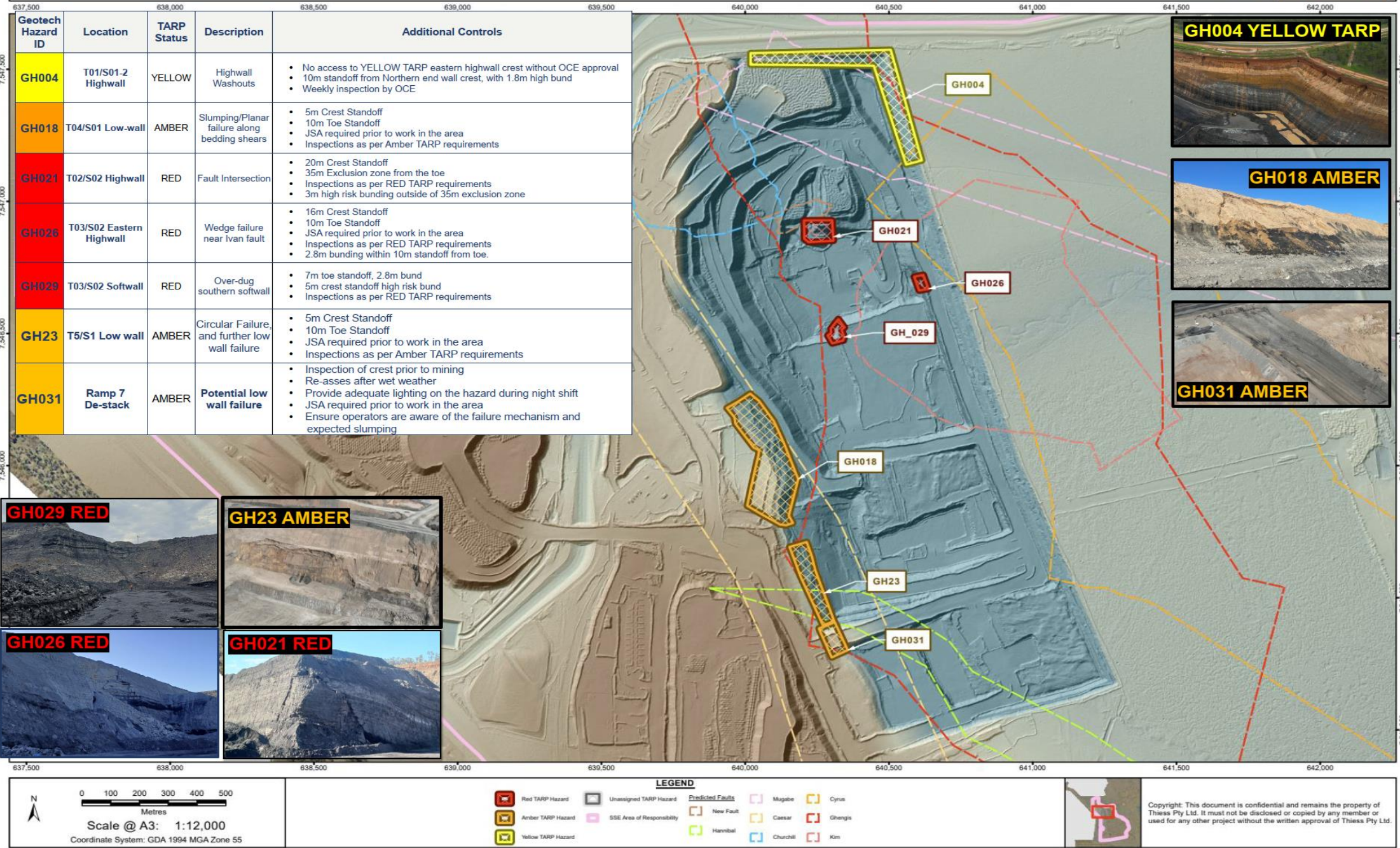
# CHPP Coal Feed Sequence

Communicate any direct feed start and finish time to CHPP control.

Continue  
Currently Washing Wet Weather Blend

In truck blending required for all current blends

	Blends								
	Feed 1	Feed 2	Feed 3	Ratio	ROM Loaders	ROM Trucks	Direct Feed	Comments	active
Blend 1									
Blend 2									
Blend 3									
Blend 4									
Blend 5									
Blend 6									
Wet weather	SP-O			Straight			Yes	VU T05S01	x

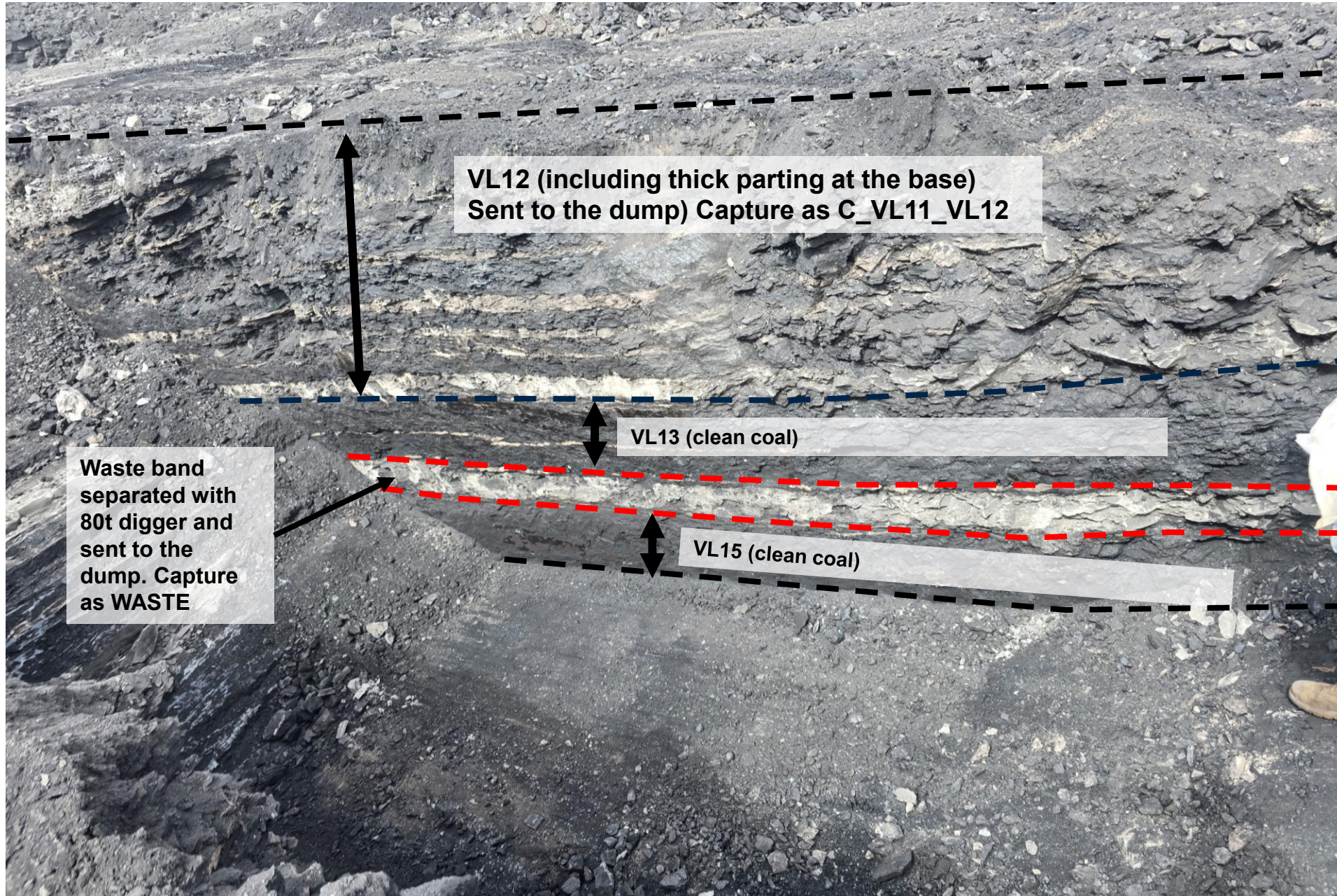





# **Appendix 1: VL1 SPLITTING GUIDE (T03 & T04)**



# T04 & T03/S01 – VL Coal Mining – Only CRS Operators







Mine down to the thick waste band at the base of the VL12  
Send to Dump, capture as VL11\_VL12.






Mine out the VL13 and stockpile on the main ROM





Split out the waste band using 80t digger – Send as waste





Mine the VL15 and stockpile separately on the main ROM