

# SITMATIC®



**COATED FABRICS**

INTERACTIVE CARD

**Stinson®**

# Lara



LRA87 Haze



LRA80 Tint



LRA83 Minty



LRA85 Lake



LRA82 Titanium



LRA90 Bahama



LRA94 Patriot



LRA81 Athens



LRA86 Gate



LRA86 Gate



LRA95 Tranquil



LRA104 Evening



LRA73 Pumice



LRA96 Hearth



LRA91 Kitten



LRA100 Wizard



LRA89 Champion



LRA50 Stone



LRA102 Espresso



LRA101 Tempest



LRA93 Clover



LRA99 Mid-Blue



LRA92 Mink



LRA106 Java



LRA107 Pitch



LRA103 Sherwood



LRA105 Mystery

## Performance Features

- CFF-Healthcare-201 Certified
- Denim stain resistant
- No PFAS, fluorocarbons or perfluorinated compounds
- No added flame retardants
- No added antimicrobials
- Formulated without phthalates
- Exceeds 1,300,000 double rubs
- BIFMA and IMO certified

## Hopsack



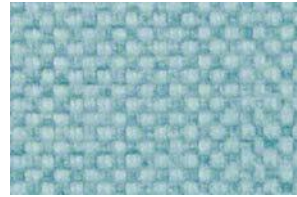
HOP12 Twine



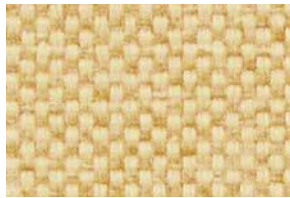
HOP10 Stucco



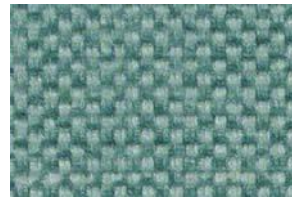
HOP20 Willow



HOP19 Bahama



HOP15 Bamboo



HOP25 Hemlock



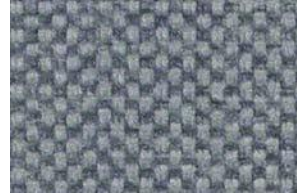
HOP14 Rain



HOP16 Cedar



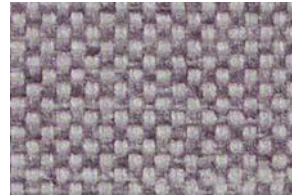
HOP27 Shadow



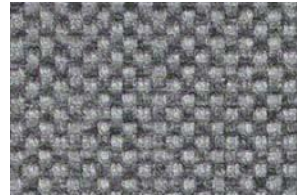
HOP22 Cori



HOP26 Earth



HOP23 Mystic

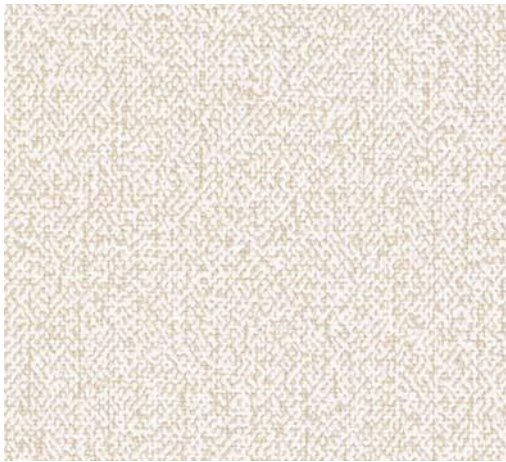


HOP17 Carbon

## Performance Features

- CFF-Healthcare-201 Certified
- Denim stain resistant
- No PFAS, fluorocarbons or perfluorinated compounds
- No added flame retardants
- No added antimicrobials
- Does not contain formaldehyde
- Formulated without phthalates
- Exceeds 500,000 double rubs
- Formulated without phthalates

## Gabby



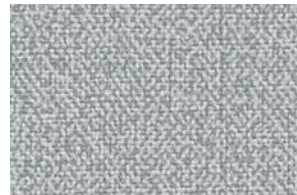
GAB12 Linen



GAB13 Sand



GAB20 Greywick



GAB14 Pool



GAB15 Fog



GAB25 Slate



GAB10 Wave



GAB16 Oro



GAB28 Pinot



GAB24 Blue



GAB27 Paprika



GAB23 Green

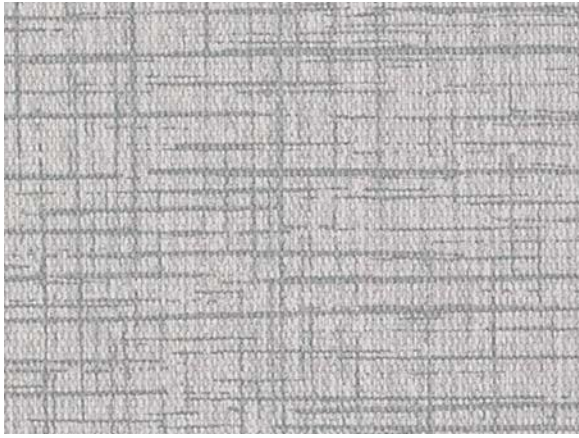


GAB29 Dusk

## Performance Features

- Enhanced soil & stain resistant
- CFFA-Healthcare-201 Certified
- Denim stain resistant
- No PFAS, fluorocarbons or perfluorinated compounds
- No added flame retardants
- No added antimicrobials
- Does not contain formaldehyde
- Formulated without phthalates

## Criss Cross



CRS265 Glass



CRS246 Quicksilver



CRS251 Meadow



CRS250 Rain



CRS244 Graystone



CRS256 Leaf



CRS272 Azure



CRS245 Mineral



CRS249 Ocean



CRS260 Navy



CRS276 Onyx



CRS274 Caribbean



CRS261 Abyss

## Performance Features

- CFF-Healthcare-201 Certified
- Denim stain resistant
- No PFAS, fluorocarbons or perfluorinated compounds
- No added flame retardants
- No added antimicrobials
- Does not contain formaldehyde
- Formulated without phthalates
- Exceeds 500,000 double rubs
- Formulated without phthalates

## Fuse



FSE238 Slate



FSE222 Raffia



FSE228 Moss



FSE233 Aqua



FSE225 Nugget



FSE227 Chive



FSE223 Peacock



FSE230 Tangelo



FSE232 Jade



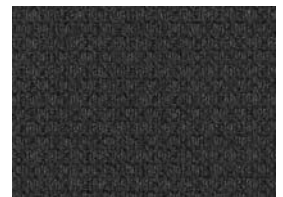
FSE237 Ink



FSE236 Plum



FSE241 Charcoal



FSE242 Onyx

## Performance Features

- Enhanced soil & stain resistant
- CFFA-Healthcare-201 Certified
- Denim stain resistant
- No PFAS, fluorocarbons or perfluorinated compounds
- No added flame retardants
- No added antimicrobials
- Does not contain formaldehyde
- Formulated without phthalates

## PERFORMANCE FEATURES

---

- Extreme durability 100,000+ DR
- Moisture barrier
- Bleach-solution cleanable
- GREENGUARD Gold Certified
- Advanced soil + stain protection
- Resistant to harsh disinfectants\*

\*Visit [cfstinson.com](https://cfstinson.com) for specific care guides and disinfectant compatibility.



The UL GREENGUARD Gold Certification includes health-based criteria for limiting emissions of more than 360 VOCs and total chemical emissions, to ensure that products are acceptable for use in environments such as schools and healthcare facilities.

**SITMATIC**<sup>®</sup>

To order memo samples:  
[samples@cfstinson.com](mailto:samples@cfstinson.com) | (800) 841-6279  
[cfstinson.com](https://cfstinson.com)

**Stinson**<sup>®</sup>  
STINSON | ANZEA | DESIGNMIX