



Continuous Document Management (cDM)

“Continuous, AI-Powered Document Management for GxP-
Regulated Organizations”



INTRODUCTION

Many life sciences companies struggle with outdated management systems that are clunky, fragmented, and slow to adapt to strict regulatory environments. Traditional approaches create multiple uncontrolled versions, depend heavily on manual workflows, and require significant effort to stay audit-ready. Continuous Document Management (cDM) from xLM changes this.

It is an AI-driven, GxP-compliant document management platform that enables:

- Real-time collaboration with version control
- Automated review and approval workflows with e-signatures
- Built-in audit trails and compliance features
- Intelligent content summaries, smart linking, and search
- Continuous validation to ensure ongoing readiness

We believe document management must be:

- **Continuous** – Not fragmented or static
- **Integrated** – Not siloed across drives and tools
- **Automated** – Not dependent on manual routing
- **Traceable** – Not reactive or opaque



VISION FOR cDM



In today's regulated, hybrid work environment, organizations require document systems that:

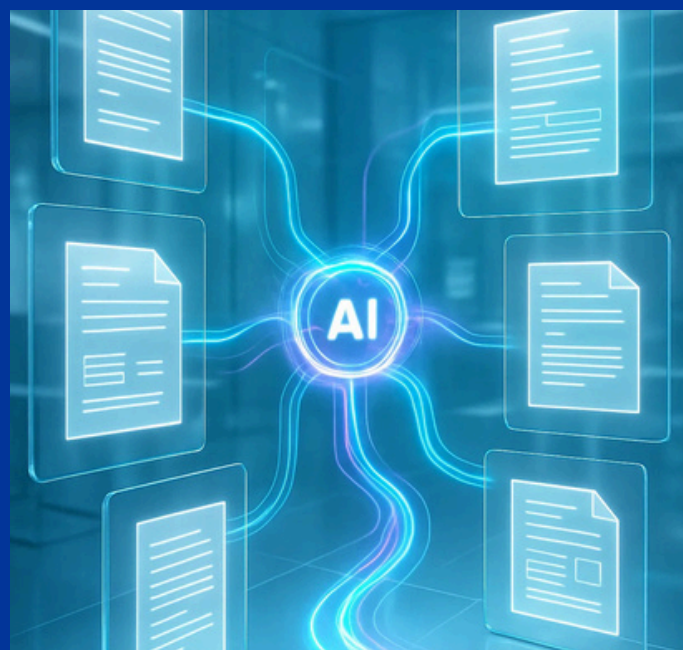
- Adapt seamlessly to constant change
- Deliver intelligent and automated workflows
- Provide real-time traceability and transparency
- Support global collaboration while meeting compliance expectations

cDM unites lifecycle management, automation, AI, and compliance for smarter, faster and scalable document control without losing regulatory rigor.

Continuous Document Management (cDM) by xLM transforms document management from a compliance burden into a strategic enabler of productivity, compliance, and collaboration.

By combining AI, automation, and GxP-ready governance, cDM empowers life sciences organizations to:

- Shorten document cycles
- Reduce compliance risk
- Lower costs
- Improve global collaboration



OUR PROCESS

► Discovery & Scoping

Assess existing workflows, compliance needs, and system gaps.

► AI-Enhanced Content

Generates summaries, smart links, and content recommendations for faster decision-making.

► Document Authoring & Collaboration

Create and edit documents directly in cDM with centralized version control.

► Audit & Compliance Tracking

Log every action with timestamps, e-signatures, and metadata for audit readiness.

► Automated Workflows

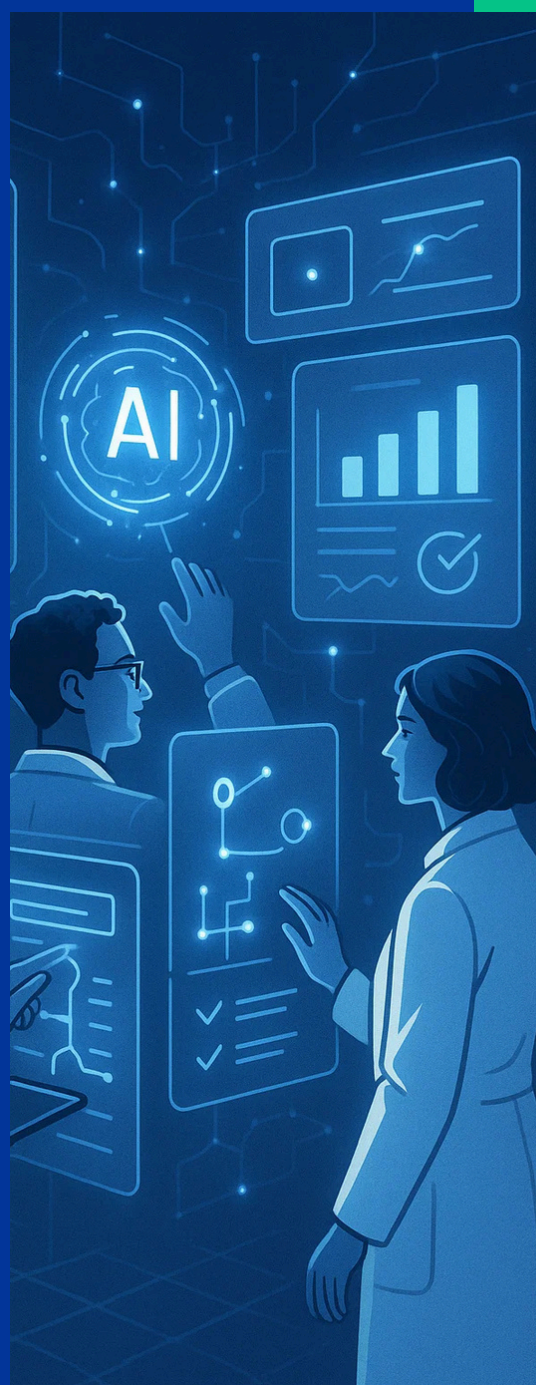
Route documents for review, approval, and publishing with built-in enforcement.

► Continuous Validation

Maintain compliance through automated change tracking and ongoing validation.

INTELLIGENT FEATURES

- **Instant Collaboration & Versioning**
Multiple users can edit in real time; version history ensures a single source of truth.
- **Custom Workflows & Role-Based Access**
Configurable approval stages and secure, role-based permissions.
- **GxP Compliance & Audit Readiness**
Built for 21 CFR Part 11 & Annex 11 with audit trails, e-signatures, and sensitivity classifications.
- **AI-Enhanced Content Intelligence**
AI-powered summaries, recommendations, and smart linking streamline document use.
- **Advanced Search & Document Discovery**
Metadata tagging, full-text search, and AI recommendations enable fast, accurate retrieval.
- **Rapid Deployment & Continuous Validation**
Deployed in days with automated validation to maintain compliance.



VALUE MATRIX

Aspect	Traditional Document Management System	cDM by xLM	Impact
Deployment Time	Weeks to months, heavy setup effort	Deploy in a day with pre-built workflows	Faster time to value
Document Review / Approval	Manual routing via email, delays common	Automated workflows & real-time collaboration	Faster cycle times
Version Control	Multiple uncontrolled copies, confusion	Centralized repository with complete version history	Improved accuracy & control
Compliance & Audit Prep	Manual logging & signatures, high risk	Built-in audit trails, e-signatures, continuous validation	Reduced audit prep time
Search & Retrieval	Slow, manual search across silos	AI-powered search, metadata, and smart links	Higher productivity
Cost of Ownership	High OPEX from inefficiency & errors	Automation reduces manual effort and errors	Lower long-term cost, higher ROI

ABOUT US

xLM is a trusted managed application provider enabling FDA-regulated organizations to modernize compliance, quality, and IT operations.

With decades of domain expertise and a technology-first mindset, xLM helps companies scale digital transformation without compromising on validation, traceability, or audit-readiness.

Our Other Applications

➤ Continuous Intelligent Validation (cIV)

➤ Continuous Predictive Maintenance (cPdM)

➤ Continuous Environmental Monitoring System (cEMS)

➤ Continuous Temperature Mapping (cTM)



Our stack incorporates intelligent and responsible AI into all our managed services. From Predictive Analytics to Software Validation, our apps are pre-built with best practices so that they can be deployed within days or hours.



Intelligent Application Provider

All our apps are delivered as managed apps. We do the heavy lifting so that you can focus on building your business



Intelligent and Responsible AI

Through our partnership with IBM, all our AI centric apps are delivered with cLCG (Continuous Life Cycle Governance)



White Glove Service

Our team does more than 95% of the heavy lifting. All we need from you are approvals



Extensive App Portfolio

xLM leverages its robust partner ecosystem to deliver over 15 managed apps and it is growing



Delivered Validated

All our managed apps are delivered “validated”



21 CFR Part 11/Annex 11/FDA CSA Compliant

Ensures all our managed services are compliant out of the box



High Data Integrity Assurance

Our services guarantee accurate, reliable and resilient data across all our managed apps

[Get Started](#)

