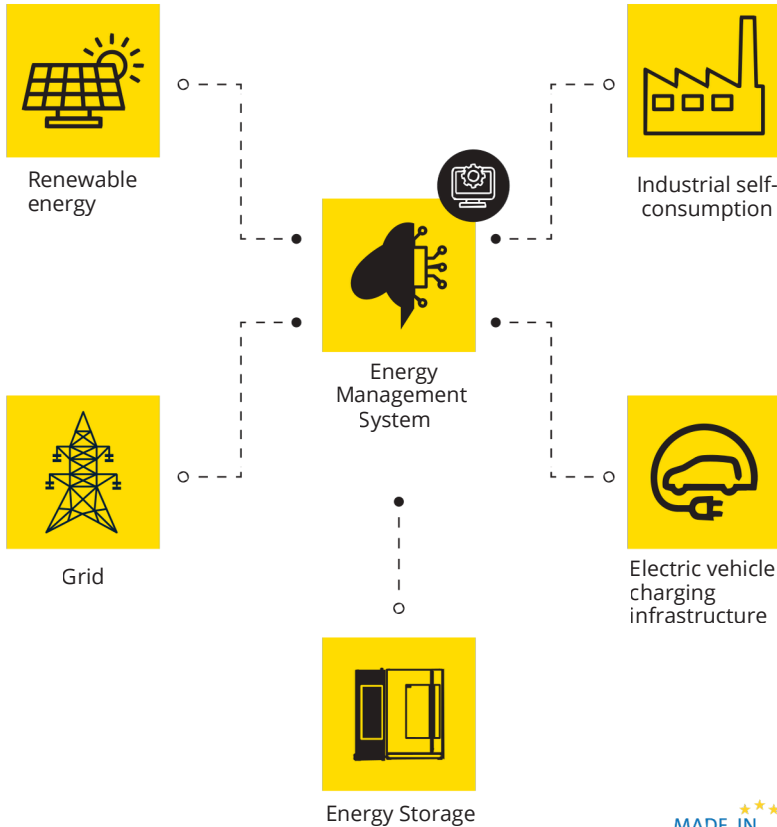




Microgrid EMS Management

Optimize and manage your energy with utmost precision and efficiency

Guarantee the return on investment, optimizing the operation of every asset



+50
supervised
facilities

+2^{GWh}
efficiently
managed energy

+99[%]
availability



—
**INTEROPERABILITY WITH MULTI BRAND
EQUIPMENT**

—
**REMOTE MANAGEMENT WITH
24/7 MONITORING**

—
**CERTIFIED CYBERSECURITY AND ROBUST
NETWORK MANAGEMENT**

—
**SCALABLE AND ADAPTABLE TO ANY TYPE OF
INSTALLATION**

—
**AUTONOMOUS OPTIMIZATION BASED ON
PRICING AND FORECASTING**

—
**API ACCESS AND INTEGRATION WITH EXTERNAL
SYSTEMS**

—
**IN-HOUSE TECHNICAL SUPPORT AND CERTIFIED
HARDWARE**

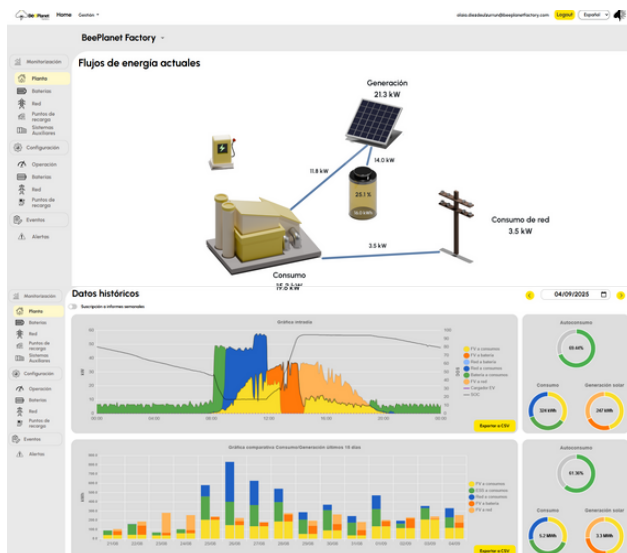


BeePlanet
factory

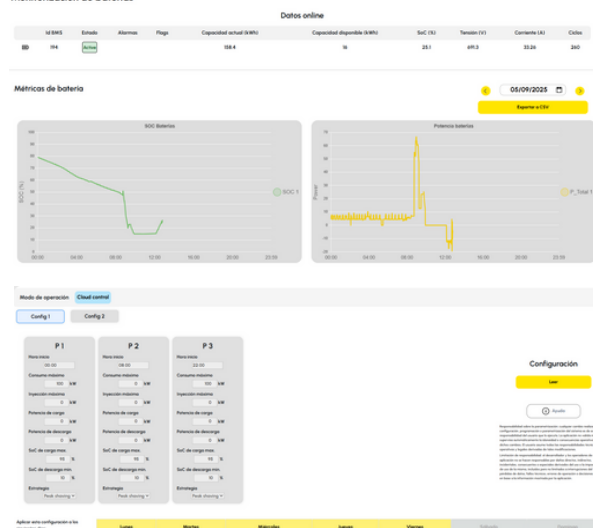
SUSTAINABLE
STORAGE

—
Automotive Battery Power

WEB PLATFORM



Monitorización de baterías



SMART ANALYSIS AND MONITORING

- Energy data analysis with **proprietary algorithms**
- **Real-time** access and **remote maintenance**
- Automatic **alerts** and predictive anomaly detection
- **Centralized**, intuitive, multi-user web interface

FLEXIBLE AND CONNECTED

- **Dynamic** power management based on demand and generation
- **Compatible** with inverters, chargers, meters, and PV systems
- **Active integrations** with multiple brands and devices

ADVANCED OPTIMIZATION WITH AI

- Optimization of energy **resources**, demand **flexibility**, and grid services **participation** powered by AI (integrated with Bamboo Energy)

ACTIVE DEVELOPMENT

- Continuously **evolving** platform
- **Automatic** OTA updates

REGULATIONS AND CE MARKING

Class I, Zone 2, AEx nA IIC T4. Class I,	IE366272
Div. 2, Groups A, B, C, D. Ex nA IIC Gc T4	
Industrial IT Security, IACS Component	IITS2 029429 0027
cULus	E238705
Cibersecurity	IEC 62351-3, IEC 62443-42 SL2, IEC 61850
Certificado de anti-dumping	RD 244/2019, UNE 217001:2020

GENERAL SPECIFICATIONS

Supply Voltage	24 V DC
Power Consumption	1 A
Protection Index	IP20
Communication Protocol	ModBus TCP o RTU, OPC-UA, MQTT, REST API, FTP y VPN
Functionality	Monitoring and configuration management (HMI)

