



opa projects

“Out of LA: Contemporary Voices”

July 10 – September 26, 2025

Opening Reception: July 10, 6–9 PM

opa projects is proud to present **Out of LA: Contemporary Voices**, a group exhibition celebrating Los Angeles's dynamic artistic landscape in the wake of the devastating Southern California wildfires of January 2025. Featuring eight LA-based artists—some of whom were directly affected by these fires—the show reflects themes of survival, renewal, and resilience through painting, sculpture, and mixed media.

Los Angeles has long been fertile ground for artistic innovation. With its expansive studio spaces, multicultural communities, and landmark institutions like MOCA, LACMA, and the Hammer Museum, LA has emerged as a world-class art capital. Once defined by grassroots energy in areas such as the Arts District — a “SoHo of the West” born from industrial lofts and punk gatherings — LA thrives on experimentation and reinvention. This exhibition honors that legacy, spotlighting the cultural force and undaunted optimism that continues to define the city.

Los Angeles has long occupied a singular position in the world of contemporary art. Unlike the traditional East Coast art capitals, LA's sprawl offers light, space, and freedom: a landscape of palm trees, freeways, and cinematic dreams. Its layered cultural history and openness to experimentation have made it a haven for artists seeking reinvention. As Ed Ruscha once said, *“Los Angeles is Eden, after the fall.”*

In this moment of rebuilding, **Out of LA** honors the artistic voices that define this city—not through nostalgia, but through action, expression, and an unshakable belief in creative future-building.

Cleon Peterson confronts the violence and chaos embedded in society, turning Los Angeles into a dystopian stage for power struggles that echo globally.

Ed Ruscha, a foundational figure of the LA art scene, elevates the vernacular of the West Coast into minimalist poetry.

Kour Pour explores cultural hybridity through intricate, cross-historical painting languages that echo the global currents running through LA.

Emily Ferguson paints quiet, ghostlike portraits that evoke femininity and interiority, grounded in LA's artistic counterculture.

Jessica Taylor Bellamy gathers data, memory, and light to build fragile ecosystems, in love with the changing sky of her native LA.

Kenny Scharf transforms Los Angeles' pop culture and street energy into a psychedelic, subversive playground.

Nicolas Shake mines the desert outskirts of LA for traces of 20th-century Americana, sculpting luminous ruins of postwar optimism.

Zoe Walsh navigates queerness, media, and abstraction through layered digital-analog paintings inspired by LA's visual and social landscapes.

CLEON PETERSON

(b. 1973, Seattle, USA)

Cleon Peterson is a provocative voice in contemporary painting, known for his stark, graphic portrayals of violence, domination, and social collapse. Based in Los Angeles, Peterson's works are populated by faceless figures locked in chaotic struggles—a metaphor for global imbalance and collective anxiety. His aesthetic, rooted in Greco-Roman form and modernist reduction, mirrors the structural tensions of LA: a city both radiant and fractured. His pieces resonate with mythic violence and dystopian critique, offering an allegorical take on contemporary power.

His work has been exhibited at institutions including the Palais de Tokyo (Paris), Cranbrook Art Museum, Denver Art Museum, Musée des Abattoirs (Toulouse), and galleries such as Albertz Benda (New York) and Kaikai Kiki Gallery (Tokyo).



Cleon Peterson

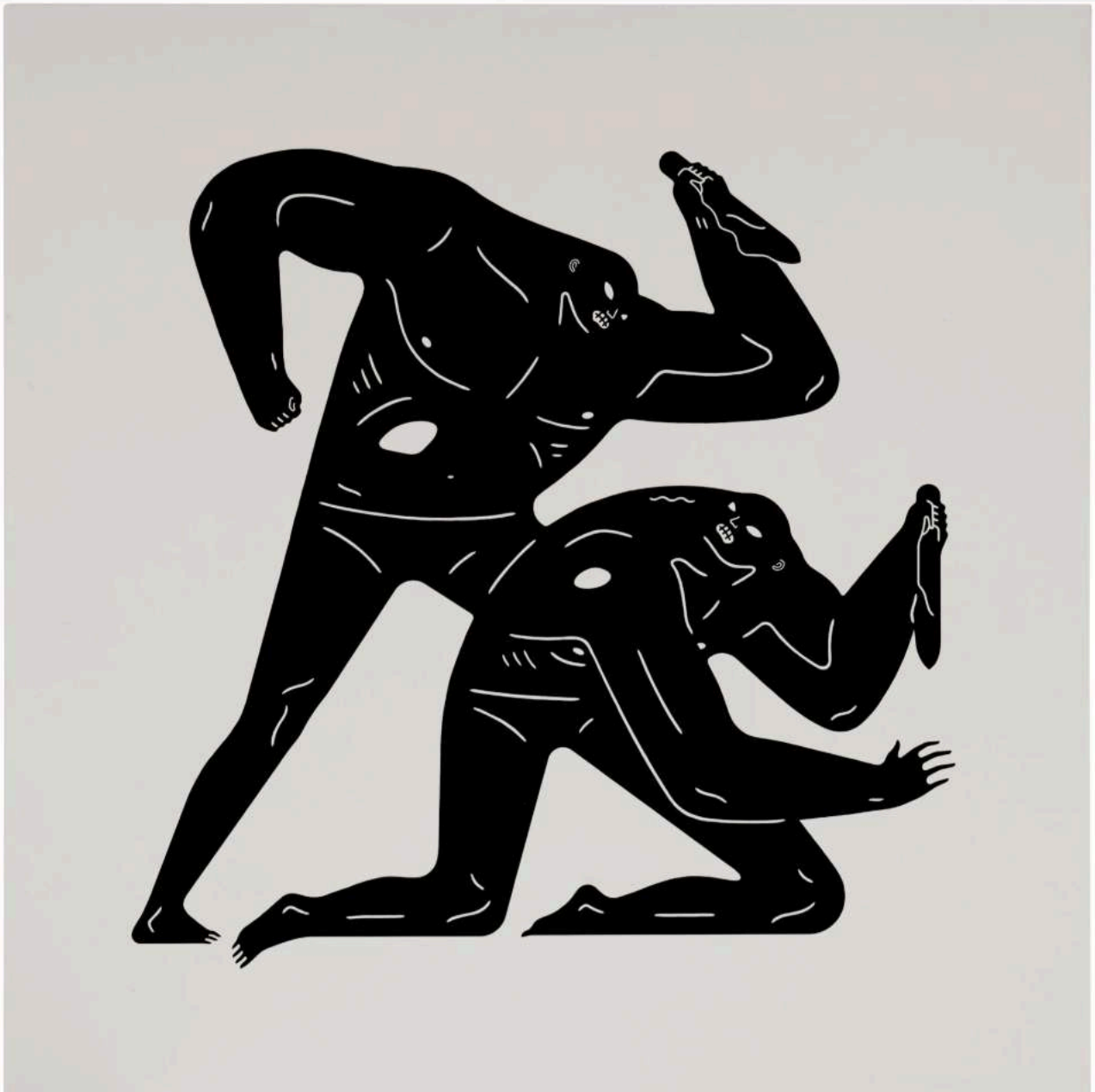
Between Fate and destiny I, 2025

Acrylic on canvas

Signed and dated on verso

45 1/4 x 45 1/4 inches - 114.9 x 114.9 cm

Price upon request



Cleon Peterson

Between Fate and destiny II, 2025

Acrylic on canvas

Signed and dated on verso

45 1/4 x 45 1/4 inches - 114.9 x 114.9 cm

Price upon request

ED RUSCHA

(b. 1937, Omaha, USA)

Ed Ruscha is one of the defining artists of postwar America and an enduring icon of Los Angeles.

Since moving to the city in 1956, he has distilled the spirit of the West into word paintings, drawings, photographs, and artist books that have become part of the cultural canon. A master of paper and print, Ruscha once remarked, “I like the idea of a word becoming a picture, almost leaving its body, then coming back and becoming a word again.” In this exhibition, his work on paper foregrounds that material intuition—anchoring text in space, silence, and suggestion. LA’s vastness, language, and roadside ephemera have remained his subject and muse for over six decades.

His works are held by leading institutions including The Museum of Modern Art (New York), Whitney Museum (New York), J. Paul Getty Museum (Los Angeles), and Tate Modern (London).



Ed Ruscha

FAST FROM, 2019

Dry pigment and acrylic on paper

9 3/8 x 14 3/8 inches - 23.8 x 36.5 cm (framed)

Price upon request

KOUR POUR

(b. 1987, Exeter, UK)

Kour Pour creates complex and richly layered paintings that merge cultural memory with formal innovation.

Drawing from Persian carpets, Japanese ukiyo-e prints, and Western abstraction, his work traces the histories of image-making across civilizations. Based in Los Angeles, Pour finds in the city's hybridity and fluidity a mirror of his own identity as a British-Iranian artist. His surfaces—meticulously built through layering, cropping, and recontextualization—become sites where art histories overlap and dissolve. Far from decorative, his compositions subtly critique ideas of cultural ownership and originality.

His work has been exhibited in major institutions such as the Tehran Museum of Contemporary Art, Tokyo Metropolitan Art Museum, Tate Britain (London), Hong Kong Arts Centre, and New Museum (New York).



Kour Pour

Purify and Protect, 2023

Acrylic on canvas over panel
60 x 48 inches - 152.4 x 122 cm

Price upon request





Kour Pour

Not Yet Titled, 2025

Acrylic on canvas over panel
30 x 25 inches - 76.2 x 63.5 cm

Price upon request

EMILY FERGUSON

(b. 1998, San Rafael, USA)

Emily Ferguson is a self-taught artist whose introspective portraits evoke dreamlike vulnerability and feminine poise.

Working in muted tones and gestural brushwork, her paintings suggest a suspended inner world, at once fragile and powerful. Based in Los Angeles, Ferguson draws inspiration from the city's undercurrents—its sense of psychic space, its artistic lineage of women painters, and its embrace of emotional abstraction.

She has exhibited at Nicodim Annex (LA), Half Gallery (LA), Phillips (LA), Prince & Wooster (New York), and Sow and Tailor (Hong Kong).



Emily Ferguson
Bed Studies, 2025
Oil on canvas
60 x 48 inches - 152.4 x 122 cm

Price upon request

JESSICA TAYLOR BELLAMY

(b. 1992, Whittier, USA)

Jessica Taylor Bellamy's practice spans painting, silkscreen, and video, fusing data, ecology, and memory into layered visual fields.

Inspired by her multicultural heritage and years of archiving weather maps from the LA Times, Bellamy maps cycles of time, light, and belonging. Her hometown of Los Angeles—its light, chaos, and fragility—deeply informs her sense of paradise and dystopia, of the real and the remembered.

She has exhibited at Anat Ebgi (LA), Lyles & King (NY), Make Room (NY), and is the recipient of grants from LACE and the Los Angeles Lakers' In the Paint program.



Jessica Taylor Bellamy
Pastime paradise, 2025
Oil on canvas
50 x 38 inches - 127 x 96.5 cm

Price upon request



Security System, 2025
Oil on canvas
25.5 x 19.5 inches - 64.8 x 49.5 cm



Grappling with Paradise, 2025
Oil on canvas
25.5 x 19.5 inches - 64.8 x 49.5 cm

Price upon request

KENNY SCHARF

(b. 1958, Los Angeles, USA)

Kenny Scharf emerged in the 1980s as a central figure of New York's East Village art scene, but his roots – and much of his artistic energy – are unmistakably Los Angeles.

A protégé of Andy Warhol and contemporary of Basquiat and Haring, Scharf pioneered a practice that blends graffiti, animation, psychedelia, and environmental critique. With his vibrant, technicolor worlds populated by smiling aliens and cartoon flora, he coined the term Pop Surrealism to define his singular vision. Beneath the playful surface, Scharf warns of ecological destruction and cultural amnesia, wielding humor and fantasy as critical tools.

He currently has a solo show at the Modern Art Museum (MAM) in Shanghai, and his work is included in the collections of MoMA, Guggenheim Museum, Stedelijk Museum, and MOCA Los Angeles.



Kenny Scharf

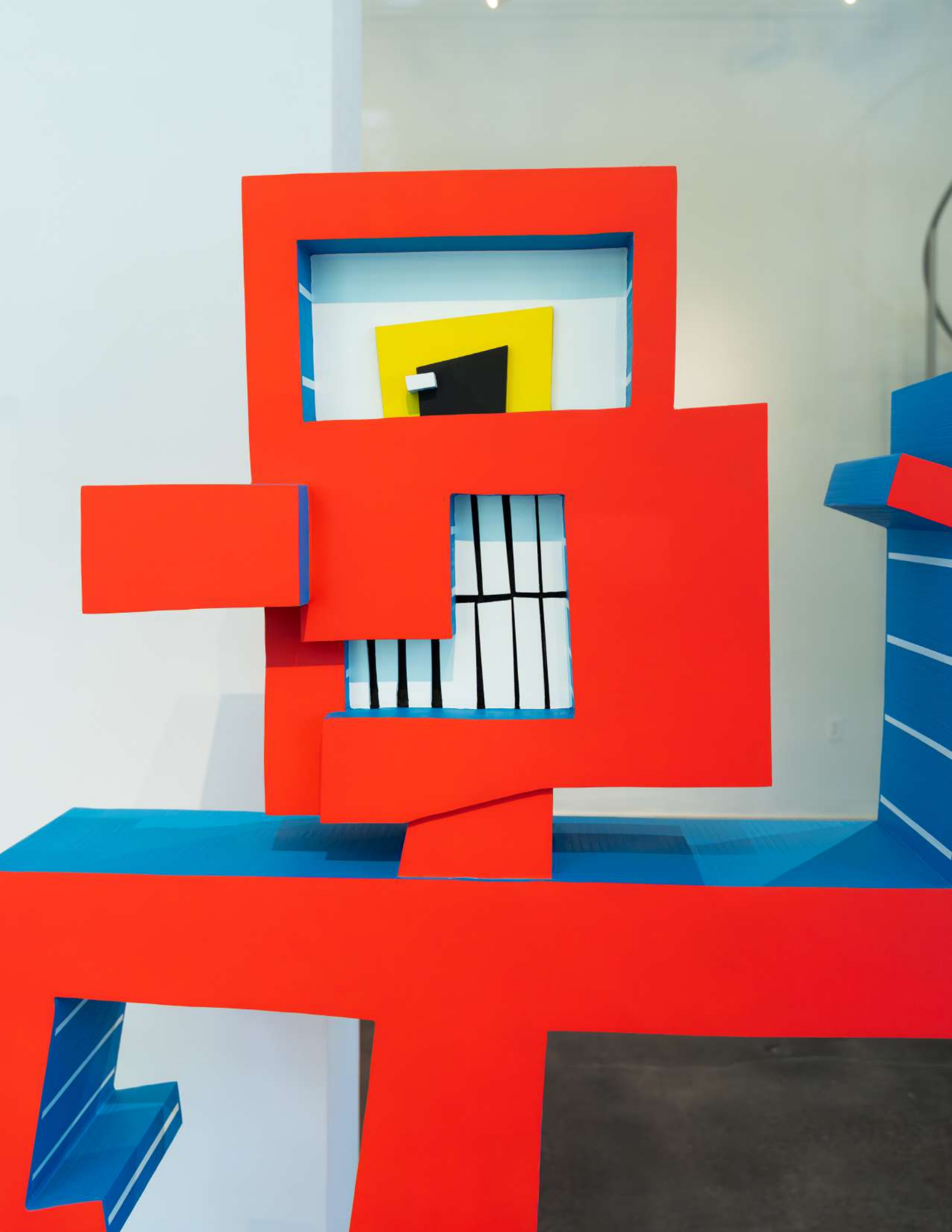
HI GUY!, 1986 / 2021

Painted aluminium

72 x 43.3 x 17.4 inches -

183 x 110 x 44.25 cm

Price upon request





Kenny Scharf

Baby Blue Meanie , 2019

Spray paint on canvas

40 x 40 inches - 101.6 x 101.6 cm

Price upon request

NICOLAS SHAKE

(b. 1981, Northridge, CA)

Rooted in the landscape and mythos of the Antelope Valley, Nicolas Shake constructs sculptural and photographic works from the discarded material culture of Southern California.

Repurposing tires, plastics, faded signage, and industrial dyes, he forges poetic objects that evoke the optimism and decay of postwar Americana. Using the desert as a studio and the sun as a tool, Shake bleaches, dyes, and distorts his materials into works that are both luminous and melancholic. His “open-air darkroom” canvases and sculptural installations bear witness to a world eroded by time yet still pulsing with symbolic charge.

Shake was a resident artist at the Chinati Foundation (Marfa, 2019) and has exhibited with Nino Mier Gallery (Brussels), Galerie Timonier (New York), Rogers Office (Los Angeles), and Brant/Timonier (Palm Beach, FL).



Nicolas Shake

GOLD STAR (trio), 2024

Dye on canvas

50.25 x 72 x 2 inches - 127.6 x 182.9 x 5 cm

Price upon request

COLOLO

STAR



ZOE WALSH

(b. 1989, Washington, D.C., USA)

Zoe Walsh channels LA's media richness and queer identity through digital-born, layered paintings.

Working from 3D digital models – which they build in Blender – Zoe creates screen-printed, stenciled canvases using cyan-magenta-yellow acrylics. These layered compositions explore the tension between landscape and identity, public and private. As a Los Angeles resident, their work is steeped in the city's architectural and social histories, reflecting Zoe's own journey of self-discovery within their queer culture.

Zoe has been shown at M+B Gallery (Los Angeles), and their work has been featured at USC Fisher Museum of Art (LA), La Maison des Arts (Malakoff, France), and Abrons Art Center (New York). In 2019, Zoe was nominated for the Emerging Artist Grant from the Rema Hort Mann Foundation and received the Al Held Foundation Fellowship at the American Academy in Rome. Most recently, they were awarded a residency at Fountainhead (Miami) beginning February 2024.



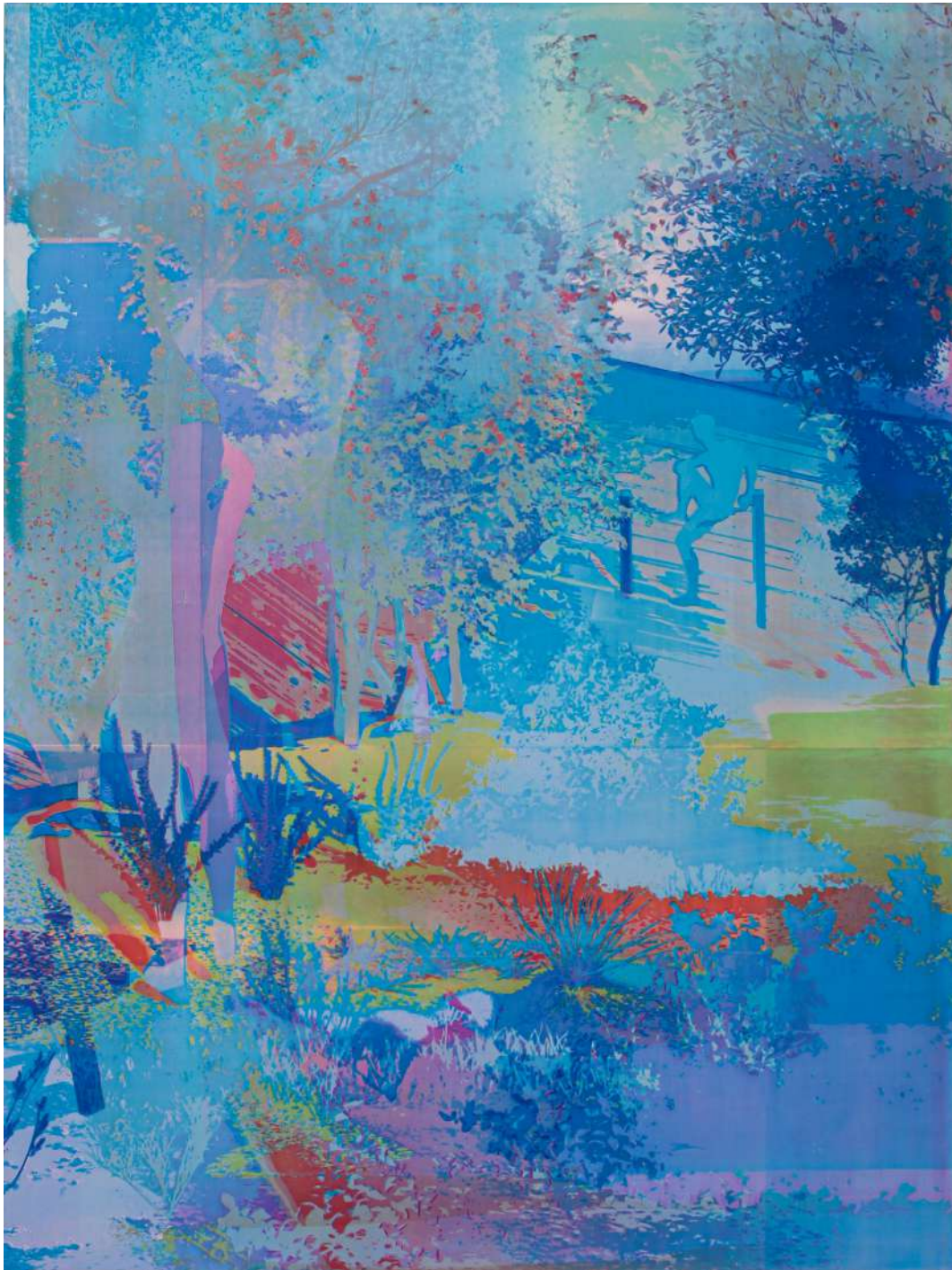
Zoe Walsh

Night spin, 2025

Acrylic on canvas wrapped panel

60 x 48 inches - 152.4 x 122 cm

Price upon request



Zoe Walsh

Traveler, 2025

Acrylic on canvas wrapped panel
40 x 30 inches - 101.6 x 76.2 cm

Price upon request



opa projects

"A New Contemporary Art Hub in Miami"

7622 NE 4 CT, Little River, 33138 Miami

contact@opaprojects.com

+1 516 807 5419

opaprojects.com