



**opa projects**

**"Echoes of the Unseen"**

**Opening April 10, 2025**

opa projects is happy to present “**Echoes of the Unseen**,” a group exhibition featuring eight artists who explore memory, materials, and hidden meanings. This exhibition brings together different artistic voices that use various techniques to show the invisible forces that shape our identity, history, and sense of place. Through mysterious portraits, forgotten objects, and a mix of text and images, these artists reveal what exists beyond what we see. Their works do not just show images—they bring to life memories, emotions, and past experiences, inviting the viewer into a world where the visible and invisible meet.

**Maurice Mboa** creates faceless portraits in wild, natural landscapes. Instead of showing physical details, his works invite us to feel the inner spirit of his subjects.

**David Salle**, a master of contemporary painting, weaves layered compositions that juxtapose imagery drawn from magazines, interiors, and art history. His works unfold like visual palimpsests, where the echoes of pop culture and classical motifs collide in a dialogue between past and present.

**Tyrrell Winston** transforms found objects into charged relics of urban memory. His sculptural assemblages of weathered basketballs interrogate the histories embedded in discarded matter, revealing how everyday artifacts bear witness to time, movement, and cultural narratives.

**Noel W. Anderson** explores the power of mediated images in shaping identity. Through printmaking, painting, and material interventions, he deconstructs socially constructed visual codes, questioning how

representations of race, masculinity, and history inform contemporary consciousness.

**Jessica Taylor Bellamy** works at the intersection of text and image, abstraction and figuration. Rooted in her multicultural heritage, her practice navigates themes of home, belonging, and ecological transformation, constructing fragile paradises that reflect both personal and collective histories.

**Ben Arpéa** reinterprets the classical themes of still life and landscape through a contemporary lens. His vibrant, geometric compositions draw from art historical references while engaging with the aesthetics of digital culture, creating a bridge between the tangible and the virtual.

**Ho Jae Kim** merges mythology, philosophy, and digital technology to craft compositions that are at once precise and dreamlike. Inspired by Renaissance perspectives and 3D modeling, his paintings explore the liminal space between the real and the surreal, capturing the suspended moments of existence.

**Sofia Nifora** transforms memory into landscape, drawing inspiration from the fleeting beauty of the natural world. Her dreamlike paintings evoke nostalgia and the ephemeral, channeling the wild, transient elements of her rural Greek upbringing into meditations on time and remembrance.

With “**Echoes of the Unseen**,” opa projects invites viewers to experience art that goes beyond the material world. This exhibition encourages reflection on what we remember, what we forget, and what remains in between.

# BEN ARPEA

**(b. 1989, Paris, France)**

Ben Arpea is a French artist whose vibrant, dreamlike works merge geometric abstraction with semi-figurative elements, offering a fresh take on contemporary art. Drawing inspiration from modern and contemporary artists like Tom Wesselmann and David Hockney, his paintings explore color, material, and texture through a unique lens. Arpea's work reflects his love for the Mediterranean, using flat areas of vivid color and rich textures to evoke both the real and the unreal. His compositions often reference architecture, natural motifs, and everyday environments, creating an intimate dialogue with the viewer.

With a hands-on approach, Arpea works with jute and linen canvases, mixing paint with minerals and sand for a tactile experience. His pieces invite the viewer into a synesthetic journey, blending simplicity with mystery. Ben Arpea's works have been showcased in prestigious art fairs like the Dallas Art Fair, Zona Maco, and Untitled Art Miami Beach, and continue to captivate audiences worldwide.





**Ben Arpea**

*A Timeless Instant*

Acrylic, oil, and sand on linen and wood

51.18 x 35.43 inches - 130 x 90 cm

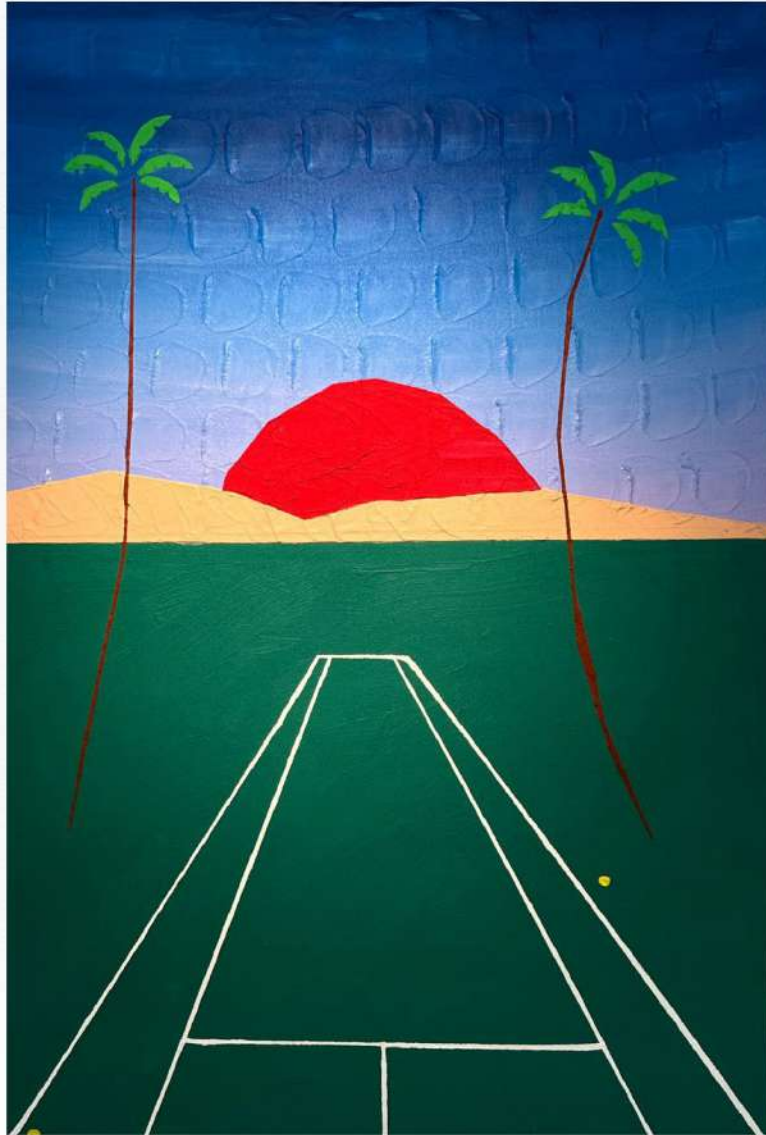


**Ben Arpea**

*Game on*

Acrylic, oil, and sand on linen and wood

51.18 x 35.43 inches - 130 x 90 cm



**Ben Arpea**

*The Crimson Sunset*

Acrylic, oil, and sand on linen and wood

51.18 x 35.43 inches - 130 x 90 cm

# NOEL W. ANDERSON

(b. 1981 in Louisville, KY;  
lives in New York, NY)

**A powerful voice in contemporary art, Noel W. Anderson investigates Black male identity through distorted, hauntingly beautiful textile works that blend photography, weaving, and conceptual practice.**

Born in 1981 in Louisville, Kentucky, Anderson is an American artist who lives and works in Harlem, New York.

Through the manipulation of found imagery—especially media portrayals of Black men—Anderson produces jacquard tapestries that are both visually rich and politically charged. After printing the images into fabric, he distresses the surface by loosening threads or applying dyes, blurring their contours and challenging the viewer's perception. This tension between erasure and revelation lies at the heart of his exploration of race, masculinity, and memory.

Inspired by authors like Ralph Ellison and theorists like Frantz Fanon, Anderson evokes the "shadow" as a metaphor for the complex visibility of Black identity. His process, which mixes traditional weaving with digital tools, invites reflection on how images shape social consciousness.

His work has been shown at the Studio Museum in Harlem, the Cincinnati Contemporary Arts Center, and the Hunter Museum of American Art. It is also part of public collections such as FRAC Sud - Cité de l'art contemporain (Marseille) and Mudam Luxembourg - Musée d'Art Moderne Grand-Duc Jean.





**Noel W. Anderson**  
*Alligator, BOY !!!*, 2021  
Jacquard tapestry  
106 x 77 inches - 269.2 x 195.6 cm







# JESSICA TAYLOR BELLAMY

## (b. 1992, Whittier, US)

**A rising voice in contemporary art, Jessica Taylor Bellamy creates richly layered works that blend painting, video, and text to reflect on ecology, identity, and the body in motion.**

Born in 1992 in Whittier, California, Bellamy lives and works in Los Angeles. Her work is deeply inspired by the city's landscape, where nature and urban life collide in a fragile equilibrium shaped by climate change and cultural transformation. Through bold, semi-figurative compositions, Bellamy explores how the body—often her own—interacts with machines, media, and memory. She frequently incorporates elements like sunsets, flowers, fences, or industrial materials, creating surreal visual narratives infused with irony, vulnerability, and strength. Her practice often reflects on car culture and construction tools, reinterpreting these masculine-coded spaces with a distinctly feminist sensibility.

Her recent work has been exhibited at respected institutions and galleries including GRIMM (New York), UTA Artist Space (Los Angeles), Charlie James Gallery (Los Angeles), Make Room (Los Angeles), Lyles and King (New York), and Anat Ebgi (Los Angeles/New York). She holds an MFA from the Roski School of Art at USC and is a recipient of the LACE Lighting Fund and the 'In the Paint' artist grant from the Los Angeles Lakers.



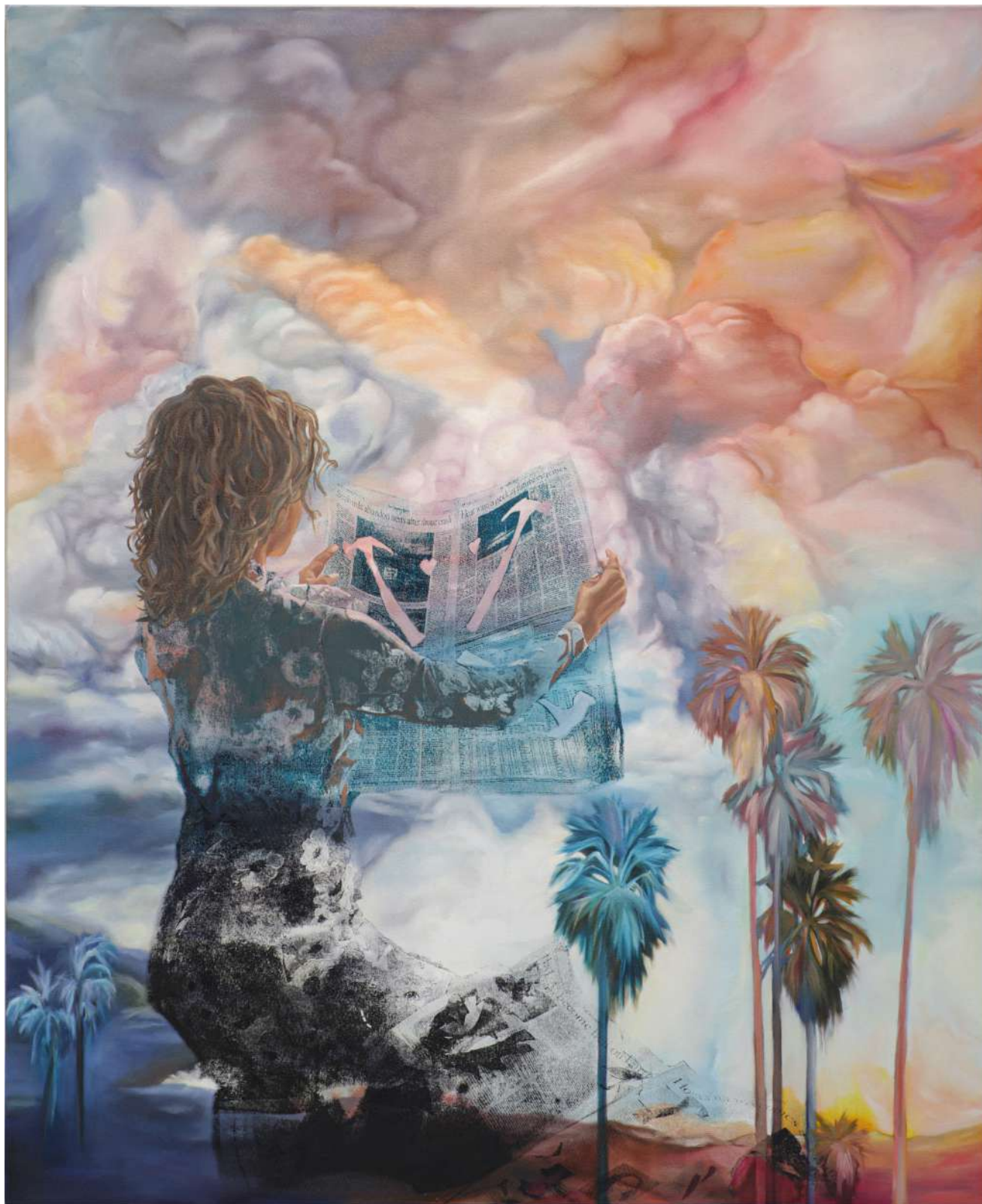
**Jessica Taylor Bellamy**

*Security System, 2025*

Oil on canvas

25.5 x 19.5 inches - 64.8 x 49.5 cm





**Jessica Taylor Bellamy**

*Optimistic Nihilism, 2025*

Oil on canvas

57.5 x 47 inches - 146 x 119.4 cm

# HO JAE KIM

(b. 1993, Seoul, South Korea)

**Ho Jae Kim's evocative creations challenge our perceptions of reality and the surreal. Originally from South Korea and now living in Brooklyn, he embodies a global creative spirit. From an early age, his restless passion for art led him through varied professional roles. He refined his vision at the Rhode Island School of Design, laying the foundation for his unique practice.**

Kim's work explores the in-between spaces of existence, transforming everyday moments into evocative purgatories. He captures liminality by blending rich textures, vibrant color contrasts, and layered techniques. His canvases play with light and shadow, evoking echoes of Plato's cave in each silhouetted form. Each piece invites viewers to question the visible and seek deeper truths beyond mere appearances.

His work has been showcased at prestigious venues such as Gana Art in Seoul and Fountainhead Arts in Miami. Renowned institutions and collectors, including JPMorgan Chase, Morgan Stanley, and Musée X in Beijing, proudly feature his art.





**Ho Jae Kim**

*Icarus : Praise the Fallen, 2025*

Oil, acrylic, graphite; charcoal, inkjet transfer, enamel on canvas  
96 x 72 inches - 243.84 x 182.88 cm





**Ho Jae Kim**

*Palm Resort, 2025*

Oil, acrylic, graphite, charcoal, inkjet transfer, enamel on canvas  
50 x 40 inches - 127 x 101.6 cm



# MAURICE MBOA

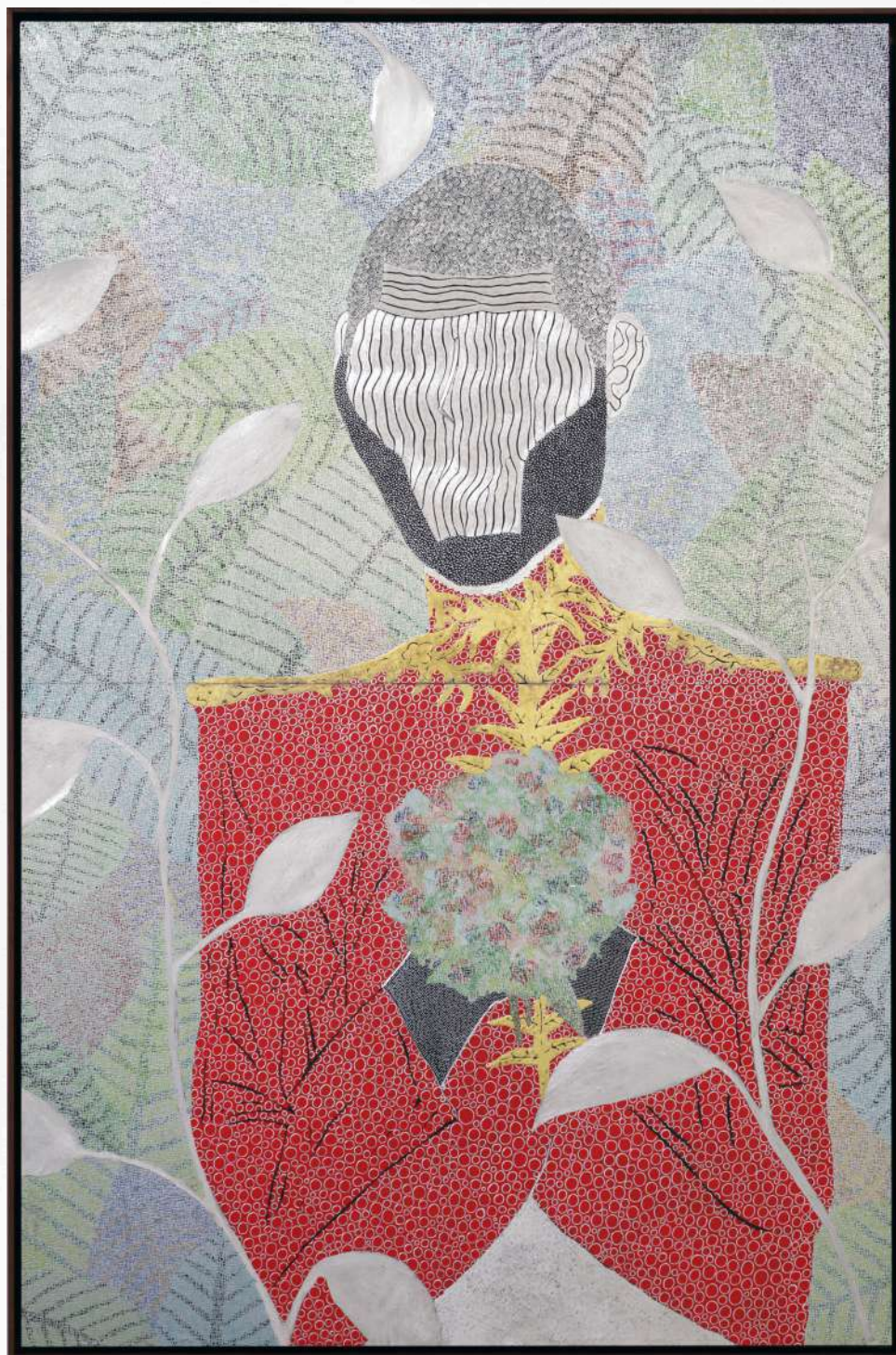
## (b. 1983, Yaounde, Cameroun)

**A unique force in contemporary portraiture, Maurice Mboa crafts mysterious figures that channel ancestral memory and spiritual presence.**

Born in Cameroon, Mboa is a self-taught artist currently based in Geneva, Switzerland. His work focuses on the invisible energies that shape human identity. Known for his faceless figures—what he calls “soulprints”—Mboa invites viewers to look beyond the physical form. Inspired by animist beliefs and early teachings from his grandmother, a traditional healer, his practice connects body and soul, nature and spirit. Mboa engraves dark steel panels using a custom glass tool, then paints over them with vibrant colors. His motifs often resemble natural elements, like leaves or branches, and express the movement of energy across living bodies.

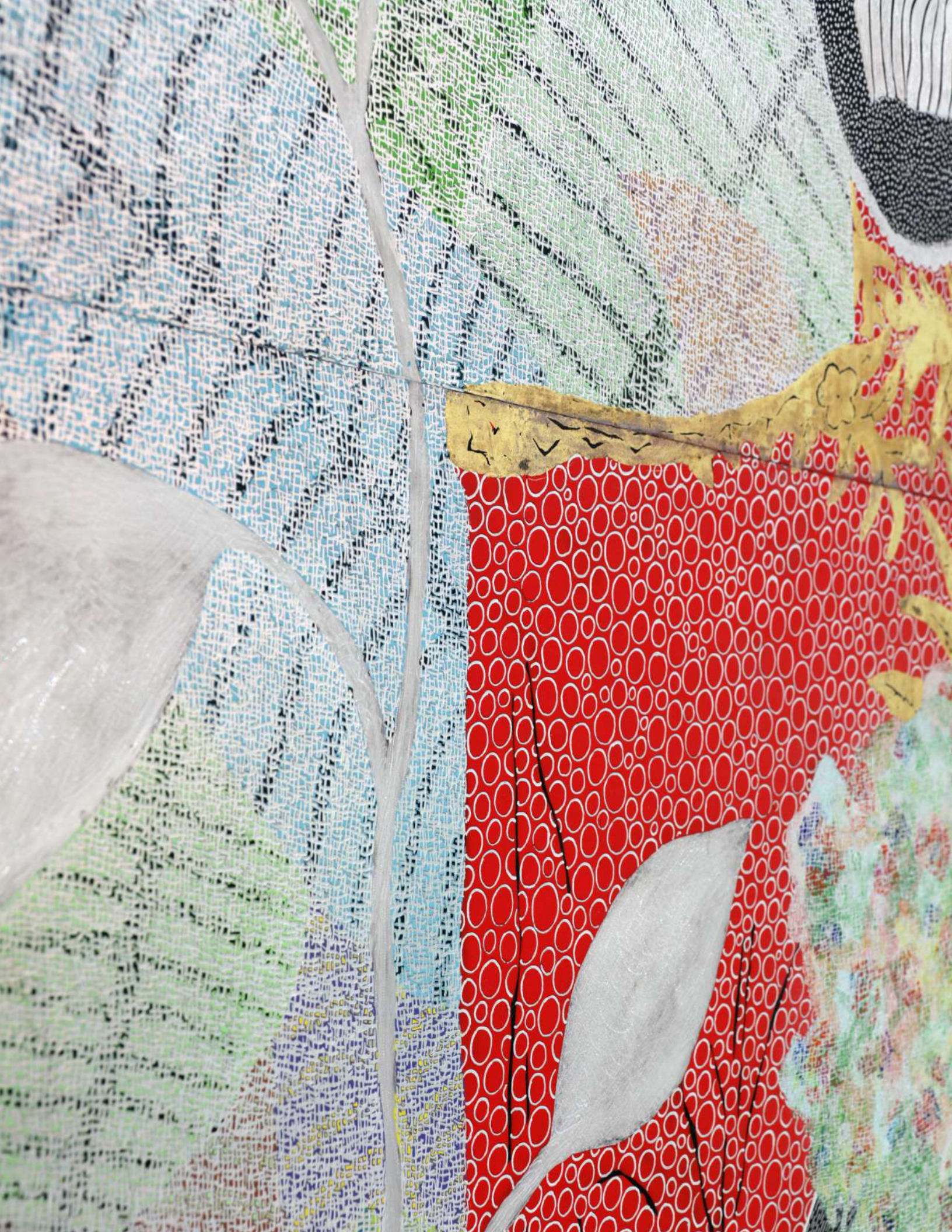
Mboa’s works have been exhibited in institutions and fairs across Europe and the Middle East, including Art Genève, Pace Gallery, and the Nassima Landau Foundation in Tel Aviv, which published a monograph on his work.





**Maurice Mboa**  
*LE DUC DU VILLAGE*  
Acrylic on metal  
70.86 x 39.37 inches - 180 x 100 cm







# SOFIA NIFORA

## (b. 1995, Patras, Greece)

**With a unique blend of abstraction and nature, Sofia Nifora paints landscapes that transport viewers into realms where memory and dream converge.**

Born in 1995 in Patras, Greece, Nifora lives and works between Greece and the UK. She completed her MFA at the Royal College of Art in London in 2022.

Drawing from her rural upbringing, Nifora transforms natural elements into poetic compositions that reflect on loss, nostalgia, and migration. Her works often depict surreal environments where vegetation, emotion, and abstraction converge. With delicate linework and fluid brushstrokes, she evokes fleeting states of mind, crafting imaginary terrains that feel both intimate and timeless.

Her work has been shown internationally, including solo exhibitions at Baert Gallery in Los Angeles (2024) and ATM Gallery in New York (2023). Group exhibitions include Phillips New York, Art021 Shanghai with Galerie Marguo, and Cromwell Place in London. She has received notable awards such as the NEON Organisation Scholarship (2020, 2021) and the Elizabeth Greenshields Foundation Grant (2021).



**Sofia Nifora**

*No Longer*

Oil on linen

82.67 x 39.37 inches - 210 x 100 cm





**Sofia Nifora**

*Southern Zephyr*

Oil on linen

51.18 x 31.49 inches - 130 x 80 cm

# DAVID SALLE

**(b. 1952, Norman, Oklahoma, US)**

**David Salle is a renowned figure in contemporary art, celebrated for his dynamic, collage-like paintings that combine pop culture, art history, and personal imagery.**

Born in 1952 in Norman, Oklahoma, Salle studied at the California Institute of the Arts, where he was mentored by John Baldessari. His breakthrough came in the 1980s with a style that merged Neo-Expressionism and cinematic techniques, using fragmented imagery and bold compositions.

Salle's work is characterized by its layering of figures, patterns, and symbols from various sources—magazines, art history, and media. This creates complex narratives that resist easy interpretation, offering a fluidity akin to film montage. His exploration of themes like abstraction and representation continues with motifs such as the vortex, adding depth to his visual language.

Salle's paintings are housed in major collections, including the Whitney Museum of American Art, the Guggenheim, and the Tate Gallery. His influence as an artist extends beyond painting, with notable work in stage design and film.





**David Salle**

*The Pumpkin Eater, 2004*

Oil on linen, in 4 parts

60 x 84 inches - 152.4 x 213.4 cm

# TYRRELL WINSTON

## (b. 1985 in Orange County, CA)

**Tyrrell Winston, a California-born artist, captures the essence of forgotten objects through his striking assemblages. His work is a reflection of his obsession with collecting discarded items from the streets of Manhattan and Brooklyn, transforming these seemingly insignificant objects into profound visual statements.**

Born in 1985 in Southern California, Winston now lives and works in Detroit, MI. His art is driven by a fascination with the energy left behind in found objects, particularly basketballs. By manipulating these items into sculptural forms, he explores themes of hope, despair, vitality, and recklessness.

His basketball wall sculptures highlight the history embedded in everyday objects, suggesting abstract narratives about time and the forgotten remnants of human existence. Winston's works serve as a reminder of the persistent energy within the things we overlook.

Winston's art is part of esteemed public collections, including the Cranbrook Art Museum and the Columbus Museum of Art, solidifying his place in contemporary art.





**Tyrrell Winston**

*No Cash Redemption Value, 2025*

Used Basketballs, liquid plastic, steel, epoxy

44 x 54 x 9 inches - 111.8 x 137.2 x 22.9 cm





**Tyrrell Winston**

*Don't Let the Door Hit You On The Way Out, Jimmy, 2025*

Used Basketballs, liquid plastic, steel, epoxy

44 x 54 x 9 inches - 111.8 x 137.2 x 22.9 cm



# opa projects

*"A New Contemporary Art Hub in Miami"*

7622 NE 4 CT, Little River, 33138 Miami

[contact@opaprojects.com](mailto:contact@opaprojects.com)

+1 516 807 5419

[opaprojects.com](http://opaprojects.com)