



Ministry of Industries  
Government of the People's Republic of Bangladesh



# Bangladesh Steel & Engineering Corporation

**BSEC**

Corporate Profile | 2026





# Pragoti Industries Ltd. (PIL)

78, East Nasirabad Industrial Area  
Plot No. D-1 & D-2, Chattogram-4209



## Location and Distance of Factory From Some Important Establishment

Factory: Barabkunda, Sitakunda, Chattogram

- **Dhaka–Chattogram Highway (N1):** direct factory frontage (0 km)
- **Chattogram Sea Port:** 36 km for CKD imports & parts
- **Container depots (Bay Link / BM):** 4–5 km at Barabkunda
- **Chattogram Elevated Expressway:** 50 km (Patenga ramp)
- **Chattogram Railway Station:** 42 km (Kadamtali)
- **Shah Amanat Int’l Airport (CGP):** 50 km (Patenga)

### Factory

Barabkunda, Sitakunda, Chattogram

### Dhaka Regional office

151-152, Tejgaon I/A, Dhaka-1208



Establishment in 1966

Nationalized in 1972



Land Area

**30.56 acres**

### Land Details (acres)

Nasirabad, Chattogram

Office : 4.31

Dhaka Regional

Office, Tejgaon : 1.5

Barabkunda, Sitakunda

Factory : 24.75

(Used : 14.75 Unused: 10)

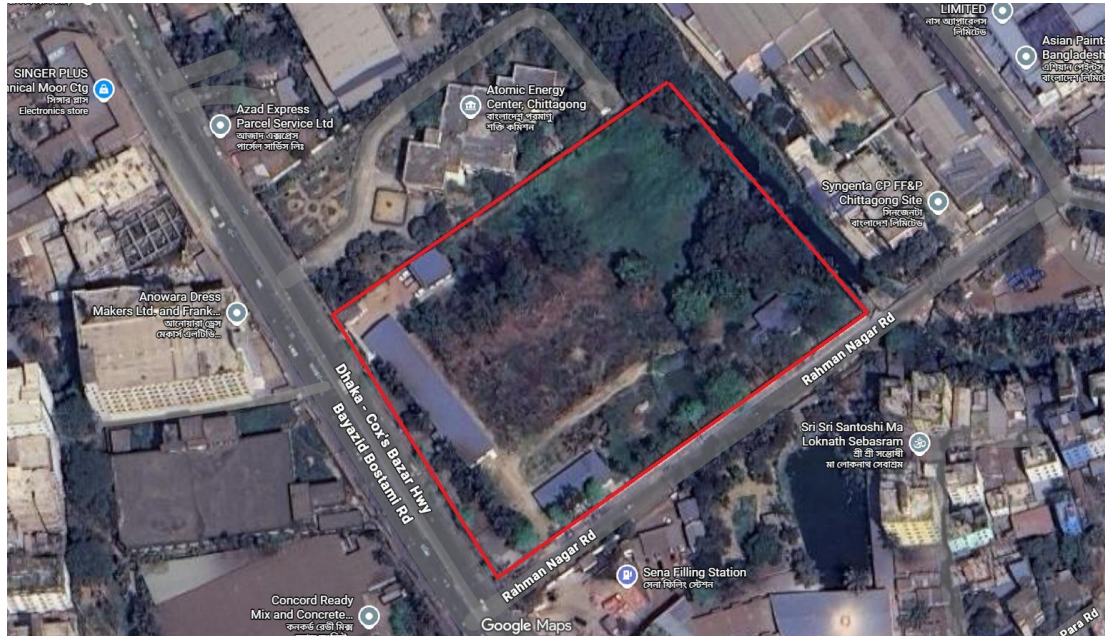


# Pragoti Industries Ltd. (PIL)

78, East Nasirabad Industrial Area  
Plot No. D-1 & D-2, Chattogram-4209



## Aerial View



Aerial view of PIL Office, Nasirabad, Chattogram

Aerial view of PIL Factory, Barabkunda, Sitakunda, Chattogram

[Site Map](#)

[Site Map](#)



# Pragoti Industries Ltd. (PIL)

78, East Nasirabad Industrial Area  
Plot No. D-1 & D-2, Chattogram-4209



Products Manufactured/ Assembled	Major Customers
Mitsubishi Pajero Sport QX SUV Jeep, Mitsubishi L-200 Double Cabin Pick-up, Mahindra Scorpio Double Cabin Pick-up, Kia Cerato Sedan Car, Toyota Hiace (Microbus) and SUV Rush	Various ministries/ divisions/ departments/ agencies, Government Transport Directorate, autonomous bodies and projects



## Production Capacity

900 unit / Year

## Market Demand VS Share

Market Demand : ~33,200 unit  
Market Value (BDT) : 30,000 million  
PIL Market Share : ~2%



# Pragoti Industries Ltd. (PIL)

78, East Nasirabad Industrial Area  
Plot No. D-1 & D-2, Chattogram-4209



CKD Importing Country	CBU Importing Country
<ul style="list-style-type: none"><li>Mitsubishi Pajero Sport QX SUV Jeep : Japan &amp; Thailand</li></ul>	<ul style="list-style-type: none"><li>Toyota Hiace (Microbus) : Japan</li><li>Toyota Ambulance : Japan</li><li>Toyota SUV Rush : Indonesia</li><li>Toyota coaster : Japan</li><li>Mitsubishi L-200 Double Cabin Pick-up : Thailand</li></ul>



# Pragoti Industries Ltd. (PIL)

78, East Nasirabad Industrial Area  
Plot No. D-1 & D-2, Chattogram-4209



## Investment opportunities

### Prime logistics location

Highway frontage on the Dhaka–Chattogram N1, 36 km to the sea port and 4–5 km to container depots — ideal for CKD imports and nationwide delivery.

### Large room to grow

PIL holds only ~2% of a ~33,200-unit (Ambulance 300, Bus 1888, Jeep 10732, Microbus 5879, Pick Up 5083 and Private Car 9387 unit) national market.

### EV & green upside

Scope to add electric-vehicle assembly positions PIL for Bangladesh's shift to cleaner transport and new policy incentives.

### Captive institutional demand

Steady orders from ministries, the Government Transport Directorate, autonomous bodies and projects give a reliable, repeat customer base.

### Established, proven plant

Assembling since 1966 (nationalised 1972), with know-how and trusted OEM ties to Mitsubishi, Toyota, Mahindra and Kia.

### Lower-cost CKD model

Local CKD assembly undercuts fully-imported (CBU) vehicles on duty and cost — better margins and import substitution.



# Pragoti Industries Ltd. (PIL)

78, East Nasirabad Industrial Area  
Plot No. D-1 & D-2, Chattogram-4209



## Marketing Opportunities

- **Government fleets:** ministries, Transport Directorate, autonomous bodies & projects
- **Market headroom:** only ~2% of a ~33,200-unit (25-30% New and 70-75% Recondition Vehicle) national market today
- **Multi-brand line-up:** Mitsubishi, Toyota, Mahindra and Kia models
- **Import substitution:** local CKD assembly in place of costly CBU imports
- **Private & retail buyers:** extend sales beyond government to private firms and consumers



# Pragoti Industries Ltd. (PIL)

78, East Nasirabad Industrial Area  
Plot No. D-1 & D-2, Chattogram-4209



## Industry can be developed

- Establishment of Automobile Industry
- EV (Electric Vehicle) Manufacturing/ Assembling Plant with Modern Body Paint Shop
- Automobile Hub cum Commercial Building Nasirabad, Chattogram
- Establishment of Commercial Complex at Tejgaon

## Utilities

- Electricity, Water and Commercial gas connection is available in Factory

## Other Opportunities

- Vacant Land
- The factory has sheds and infrastructure for car assembly and painting.
- Machineries and Testing Lab
- Sales facilities at DPM as per government policy.
- Brand Value
- Risk sharing and quick break-even potential



# General Electric Manu. Co. Ltd. (GEMCo)

North Patenga, Chattogram-4204



Establishment in 1963

**Nationalized in 1972**



Land Area

**122.96 acres**



## Location and Distance of Factory From Some Important Establishment

3954/5322, North Patenga, Chattogram

- **Chattogram Elevated Expressway:** 1 km (Patenga ramp)
- **Shah Amanat Int'l Airport (CGP):** 3.7 km
- **Chattogram Sea Port:** 6.2 km for raw-material imports
- **Dhaka–Chattogram Highway (N1):** 11 km
- **Chattogram Railway Station:** 11 km (Kadamtali)

## Land Details (acres)

- Factory Area : 37.00  
(building and road – 13 acres)  
(unused land – 12 acres)
- Housing Colony : 27.35  
(used : 6.35 acres)  
(unused : 21 acres)  
(proposed 20 acres Lease to ERL)
- Joint Housing Colony : 13.61  
(2 nos of Five storied residential building,  
where 7 families live in)
- Lease Eastern Refinery Ltd : 45

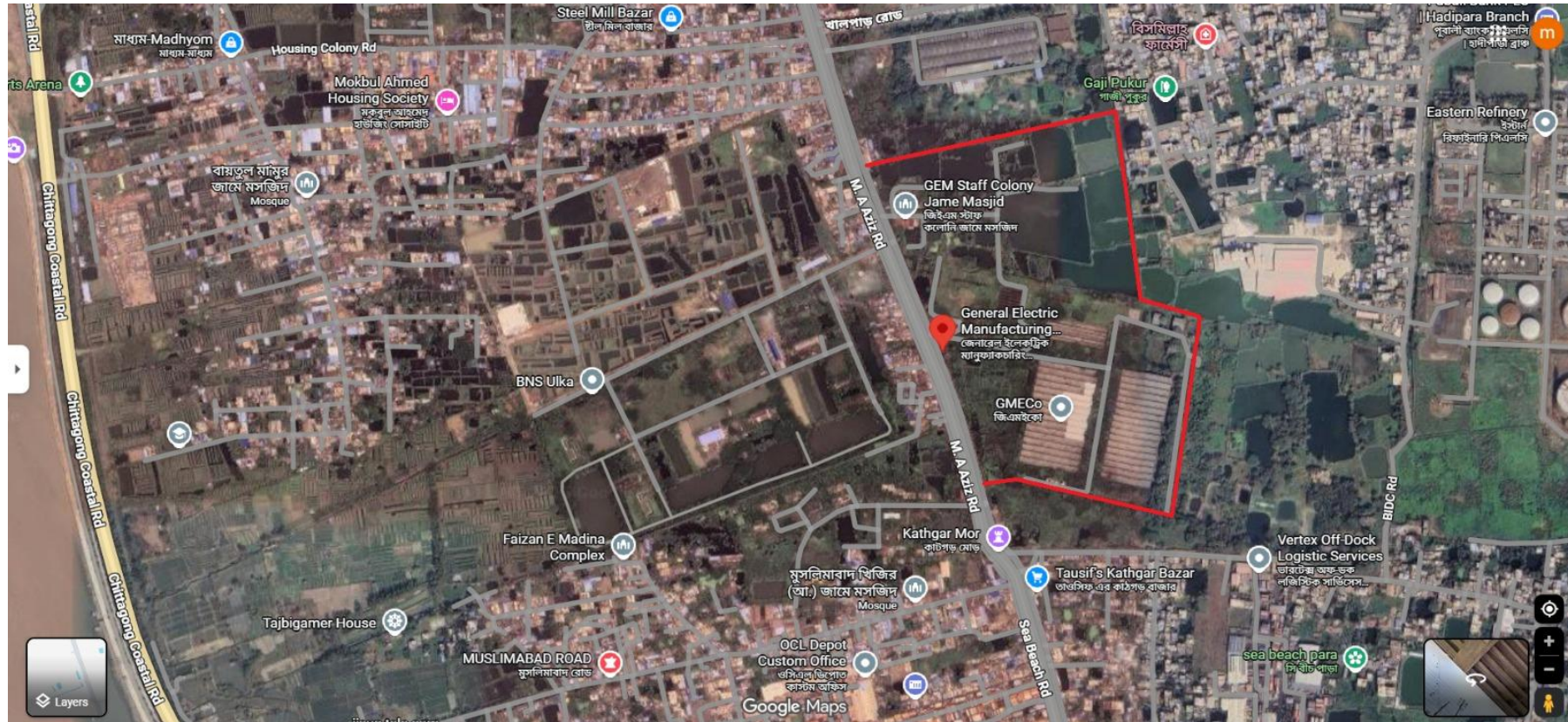


# General Electric Manu. Co. Ltd.(GEMCo)

North Patenga, Chattogram-4204



## Aerial View



[Site Map](#)

Aerial view of GEMCo Ltd., North Potenga, Chattogram



# General Electric Manu. Co. Ltd.(GEMCo)

North Patenga, Chattogram-4204



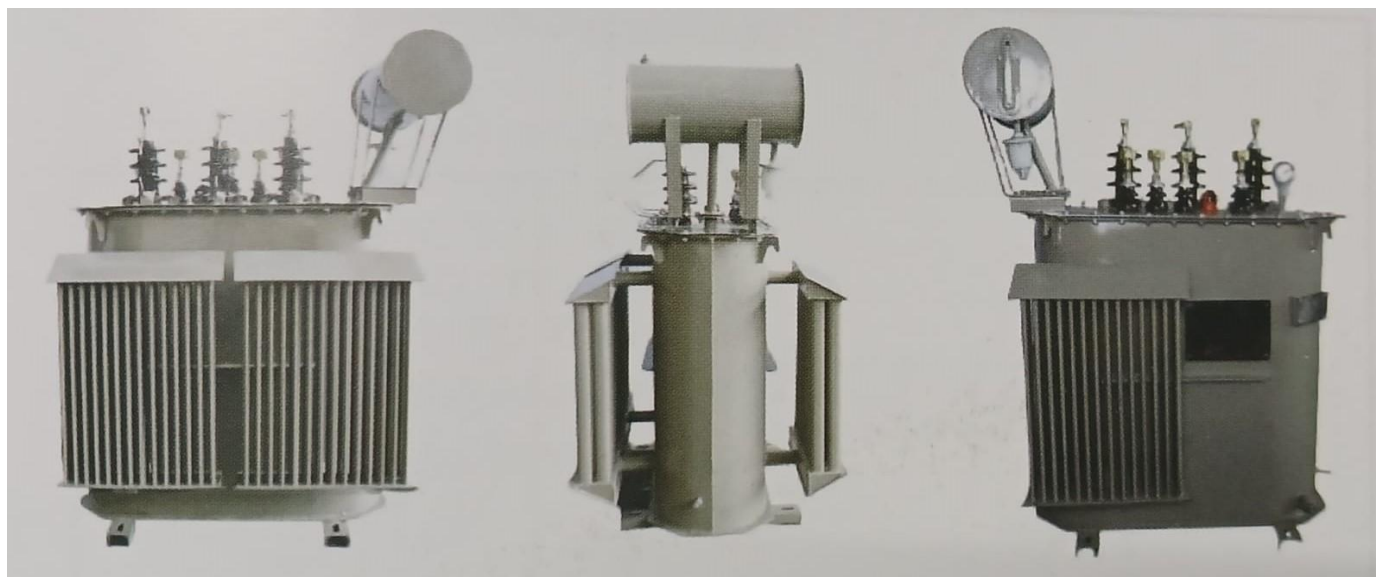
Products Manufactured/ Assembled	Major Customers
3-phase distribution transformers (50 KVA to 1000 KVA)	BPDB, NESCO, DPDC, DESCO, West Zone Power Distribution Company, Dhaka WASA, Chattogram WASA

## Production Capacity

**In Weight:** 1850 MT / Year

### **In Number:**

1681 unit on 250 KVA OR  
1875 unit on 200 KVA OR  
2803 unit on 100 KVA



## Market Demand VS Share

Market Demand :10,000 unit (approx)

Market Value (BDT): 7000 million

GEMCo's Share : 5 %

Import : 20-25%



## General Electric Manu. Co. Ltd.(GEMCo)

North Patenga, Chattogram-4204



### Raw Materials imported from UAE/S. Korea, China, India & other countries

Silicon Electrical Steel Sheet, Paper Insulated Copper Strip, Super Enameled Copper Wire, Transformer Oil, Insulated Paper and Paper Board, Tap Changer, Dial Type Thermometer, MS Sheet etc.

### Locally available Raw Materials

MS Channel, Oval Pipe, MS Pipe, MS Plug and Pipe Connection, Drain Cork, Full Lug, MS Wire, MS Rod etc.



## Investment Opportunities

### Wide import-substitution gap

20–25% of transformers are still imported and GEMCo holds just 5% of a 10,000-unit market — large headroom to win demand at home then export to other countries.

### Reliable utility demand

Supply opportunities for BPDB, NESCO, DPDC, DESCO, WZPDC and institutions.

### Established market leader

The largest transformer producer in Bangladesh, operating since 1963, with proven technology and a trusted brand.

### Prime industrial location

North Patenga – 1 km to the elevated expressway, 6.2 km to the sea port and 3.7 km to the airport — easy imports to raw materials and delivery.

### Land & expansion upside

Developed unused land

### Grid & green-energy tailwind

Electrification, grid upgrades and renewable integration drive transformer demand, with scope for a modern, eco-friendly plant.



## General Electric Manu. Co. Ltd.(GEMCo)

North Patenga, Chattogram-4204



### Marketing Opportunities

- **Power & water utilities:** BPDB, NESCO, DPDC, DESCO, WZPDC and WASA
- **Import substitution:** capture the 20–25% now imported
- **Market-share growth:** from 5% toward leading a 10,000-unit market
- **Product range:** 50–1000 KVA, with scope for higher-capacity units
- **Private & industrial buyers:** factories, real estate and infrastructure projects
- **Renewable & grid projects:** transformers for new generation and grid upgrades



# General Electric Manu. Co. Ltd.(GEMCo)

North Patenga, Chattogram-4204



## Industry can be developed

- Establishment of Power Transformer Manufacturing Plant (Substations and rid)
- Establishment of Single-Phase Transformer Manufacturing Plant
- Establishment of Substation Assembly Plant including LT and HT Switchgear, PFI Plant
- Lightning Arrester (LA) and Drop-Out-Fuse (DOFC)
- Production of Current Transformer (CT) and Potential Transformer (PT)
- Production of Pole Fittings Equipment

## Utilities

- 10 MVA 33/11KV Substation (Approved Load: 2400 kW)
- Residential gas line connection available

## Other Opportunities

- 2 nos of Administration Building (20,500 sft)
- Training Building (three stories with an approximate area of 7,700 sft)
- 2 nos of Factory Shade (420000 sft) with Machineries
- Training Workshop (24000 sft)
- Vacant Land
- Brand Value



## Atlas Bangladesh Ltd.(ABL)

265-267, Tongi Industrial Area, Gazipur



**Establishment 1966**

**Nationalized in 1972**

### Location and Distance of Factory From Some Important Establishment

265-267, Tongi Industrial Area, Gazipur

- **Dhaka–Mymensingh Highway (N3):** 1 km
- **Tongi Railway Station:** 2 km
- **Hazrat Shahjalal Int'l Airport:** 6 km
- **Dhaka Elevated Expressway:** 6 km (Airport ramp)
- **Uttara North (Diabari) Metro:** 13 km
- **Kamlapur Inland Container Depot:** 22 km
- **Chattogram Sea Port:** 266 km for CKD imports



**Land Area**

**9.62 acres**

#### Land Details (acres)

Used (Factory) : 3.50

Unused : 6.12

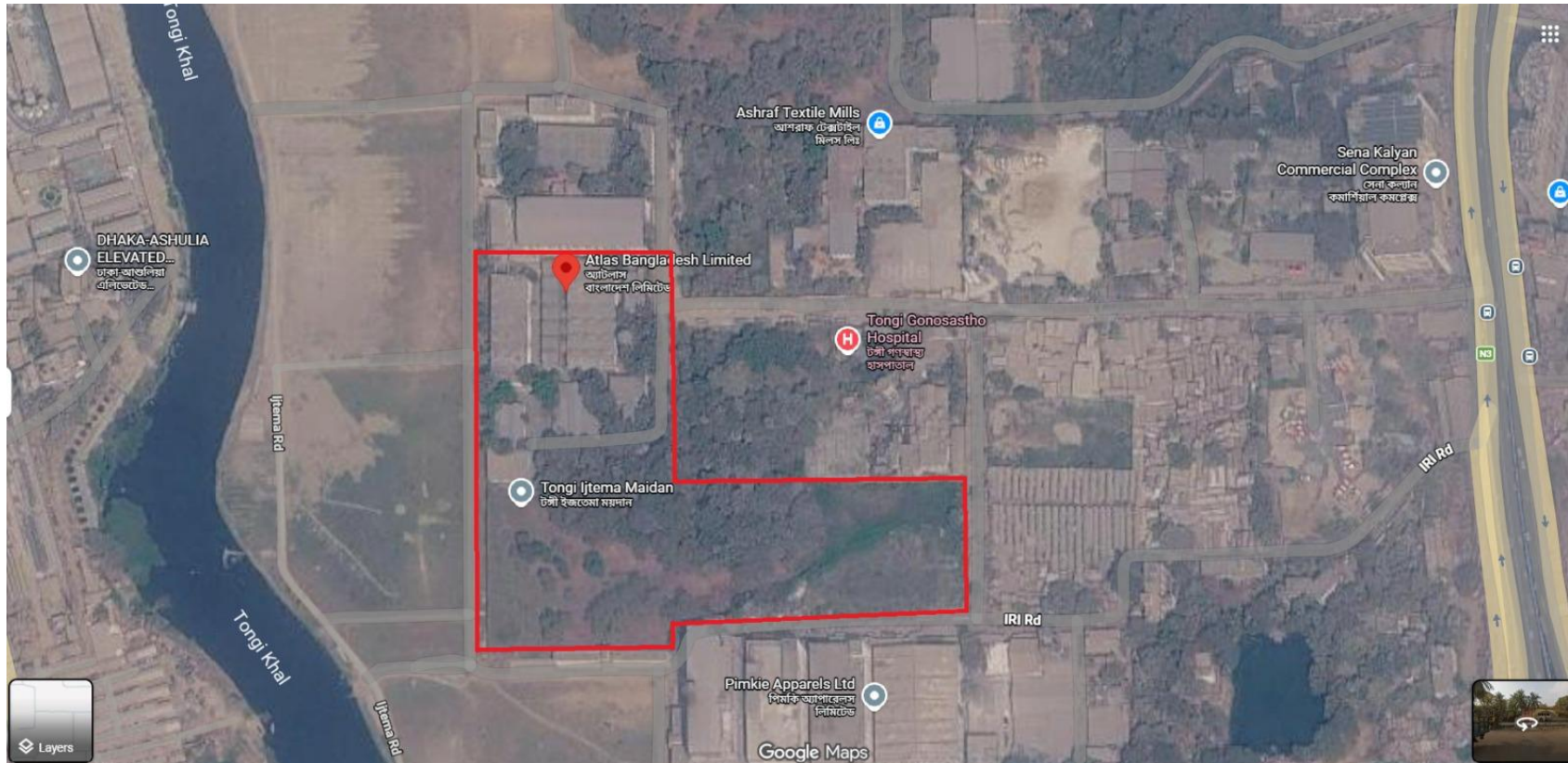


# Atlas Bangladesh Ltd.(ABL)

265-267, Tongi Industrial Area, Gazipur



## Aerial View



## [Site Map](#)

Aerial view of Atlas Bangladesh Ltd., 265-267, Tongi I/A, Gazipur



# Atlas Bangladesh Ltd.(ABL)

265-267, Tongi Industrial Area, Gazipur



## Products Manufactured/ Assembled

Electric motorcycle/scooter,  
Honda brand motorcycle

## Major Customers

Various ministries/ divisions/ departments/  
agencies, Government Transport  
Directorate, autonomous bodies, projects  
and dealers/ general customers, etc.

## Production Capacity

7000 Unit Motorcycle /  
Year



## Market Demand VS Share

Motorcycle : 4,70,000 unit  
Market Value (BDT):70,000 million  
ABL Share : 0.7%

EV Demand : 15,000 unit  
Market Value : 800 million  
ABL Share : 8%



## Investment Opportunities

### **EV first-mover advantage**

The Atlas EV brand already holds ~8% of a 15,000-unit electric two-wheeler market set to grow fast with the green-transport shift.

### **Captive + dealer demand**

Government ministries, the Transport Directorate and autonomous bodies, plus a nationwide dealer and retail network.

### **Land for expansion**

9.62 acres with 6.12 acres (64%) unused — a large expansion runway on owned land, no acquisition needed.

### **Huge motorcycle headroom**

ABL just contain 0.7% of 4,70,000 Unit Local Motorcycle Market share Today — there is vast room to grow local share

### **Prime Dhaka-edge location**

Tongi – 1 km to the N3 highway, 2 km to rail, 6 km to the airport and expressway — fast CKD imports and delivery.

### **Proven brand, low-cost CKD**

Running since 1966 with Atlas brand equity.



# Atlas Bangladesh Ltd.(ABL)

265-267, Tongi Industrial Area, Gazipur



## Marketing Opportunities

- **EV market:** grow ~8% share of a 15,000-unit electric two-wheeler market
- **Motorcycle market:** expand from 0.7% of 4,70,000 units
- **Government fleets:** ministries, Transport Directorate, autonomous bodies & projects
- **Dealer & retail network:** general customers nationwide
- **Import substitution:** local CKD assembly versus imported (CBU) bikes
- **Green-mobility tailwind:** EV incentives and emission-reduction goals



# Atlas Bangladesh Ltd.(ABL)

265-267, Tongi Industrial Area, Gazipur



## Industry can be developed

- Motorcycle Manufacturing Plant
- Electric Motorcycle (EV) Manufacturing Plant
- Battery Production/Assembly Plant
- Motorcycle helmet production

## Utilities

- Electricity, Water and Residential gas line connection is available

## Other Opportunities

- Vacant Land
- 1 nos of Administrative building
- 5 nos of Factory Shade  
(3 nos CKD and 2 nos Finish Godown)



# Proposed Environment-Friendly Modern Steel Mill, Bogura

(This Factory May be Established Through Joint-Venture Investment )



LOCATION

Bogura (northern Bangladesh)



CAPACITY

3 lakh MT / year



PERIOD

2026 – 2030



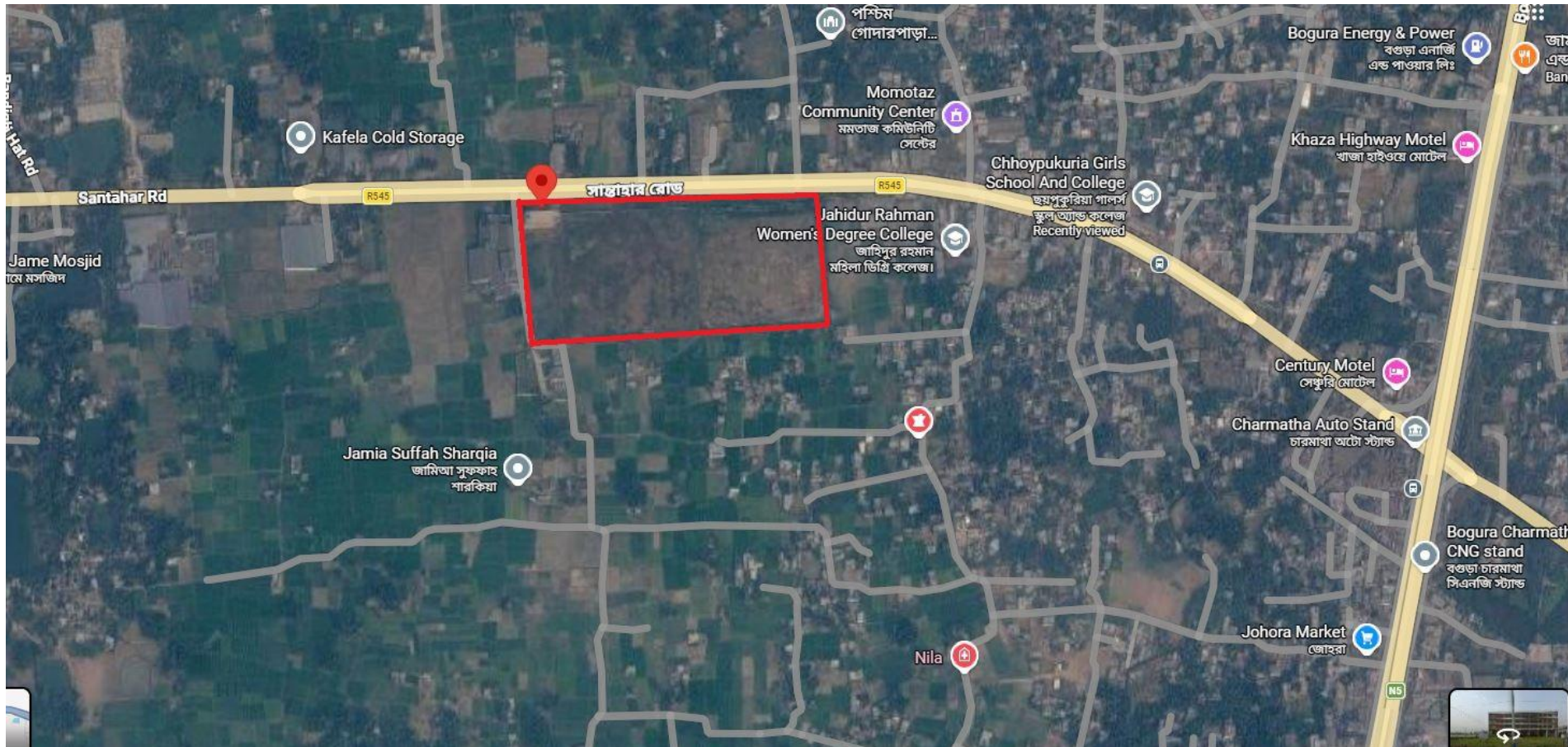
PRODUCTION COST

BDT 83,000 / ton

**On BSEC's own land — no land acquisition required**

# Environment-Friendly Modern Steel Mill

## Aerial View



[Site Map](#)

Aerial view of Environment-Friendly Modern Steel Mill, Choybukuria, Bogura

# Investment & Feasibility



TOTAL ESTIMATED COST

**BDT 1,940 cr**  
*(BDT 19,400 Million)*

FEASIBILITY: Dockyard & Engineering Works Ltd. (Bangladesh Navy), Narayangonj  
(10 Mar 2024)

## Location and Distance of Environment-Friendly Modern Steel Mill

Choypukuria, Bogura

- Bogura Airport : ~4 km
- Bogura Railway Station : 8 km
- Dhaka–Rangpur Highway (N5) via Charmatha: 4 km
- Dhaka Airport : ~187 km
- Chattogram Sea Port: ~413 km
- Payra Sea Port : ~461 km
- Mongla Sear Port : ~418 km

**NPV**

Financial	Economical
BDT <b>1,212.04 cr</b>	BDT <b>636.04 cr</b>

**BCR**

Financial	Economical
<b>1.03</b>	<b>1.03</b>

**IRR**

Financial	Economical
<b>15.26%</b>	<b>15.53%</b>

Note: 1 crore = BDT 10 Million..

# Market Context

Bangladesh's steel rod market — a wide supply gap filled by imports

## ANNUAL DEMAND

**90** lakh MT

Total national demand for steel rod

## DOMESTIC CAPACITY

**60** lakh MT

Current local production capacity

## IMPORTED

**30** lakh MT

From USA, Brazil, UK, India, China & Russia



## A 30 lakh MT supply gap — met entirely by imports

The new Steel mill will add 3 lakh MT of environment-friendly MS products each year, supporting domestic supply, helping stabilise prices, and reducing import dependence.

# Raw Materials

- Require Raw Materials : 339536 Metric Ton
- Raw Material Category: Heavy Melting Steel (HMS)-1 & Plate and Structural steel scrap (PNS) (35%)  
Heavy Melting Steel (HMS)-2 & Light Melting Scrap (LMS) (15%)  
Shredded (20%)  
NTP Bundles/Tin Bundles/Sponge Iron (15%)  
CI/Busheling/Blue Steel & Others (13.5%)  
Alloy (Fe-Si, Fe-Mn, Si-Mn) (1.5%)

# Investment Opportunities

## The commercial case for private capital



### Attractive, proven returns

A 15.26% financial IRR and positive NPV of BDT 1,212 cr beat typical fixed-income returns.



### Captive, unmet demand

A 30 lakh MT supply gap now met entirely by imports means a ready market for output.



### Lower-cost brownfield entry

BSEC's own land and idle capacity to revive mean no land cost and a faster path to revenue.



### Communication facilities

Road, rail and 132 kV power links at Bogura ease inbound raw materials and outbound dispatch.



### Independently validated

A third-party feasibility study (DEW Ltd, 2024) confirms a benefit-cost ratio above 1.0.



### Import-substitution edge

Local supply undercuts imports on freight, duty and FX, protecting margins at BDT 83,000/ton.



### Government-backed, de-risked

An ADP framework and state partner enable PPP or blended finance and policy support.



### Marketing opportunities

There is no other Steel Mill in Northern Area of Bangladesh.



# Thank You

Bangladesh Steel & Engineering Corporation  
Ministry of Industries

---

[www.bsec.gov.bd](http://www.bsec.gov.bd)

