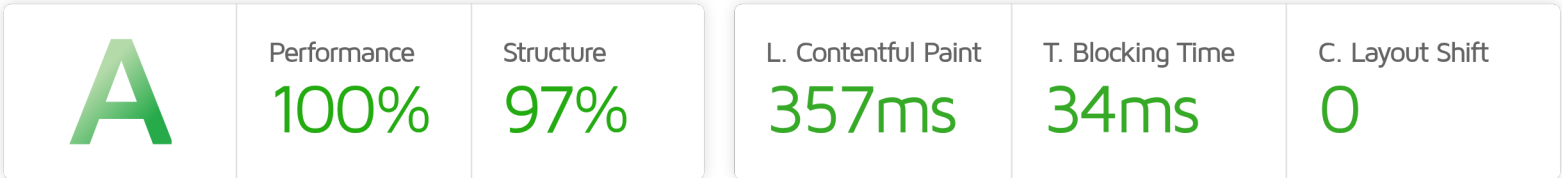


Performance Report for: <https://cleancarpet-ilicdev.webflow.io/>

Report generated: Tue, Apr 7, 2026 11:35 AM -0700
 Test Server Location: 🇺🇸 Seattle, WA, USA
 Using: 🌐 Chrome 142.0.0.0, Lighthouse 12.6.1



Top Issues

Med-Low	Use explicit width and height on image elements <small>CLS</small>	2 images found
Med-Low	Serve static assets with an efficient cache policy	Potential savings of 49.2KB
Low	Avoid an excessive DOM size <small>TBT</small>	1,208 elements
Low	Reduce JavaScript execution time <small>TBT</small>	177ms spent executing JavaScript
Low	Avoid chaining critical requests <small>FCP</small> <small>LCP</small>	13 chains found

Focus on these audits first

These audits likely have the largest impact on your page performance.

Structure audits do not directly affect your Performance Score, but improving the audits seen here can help as a starting point for overall performance gains.

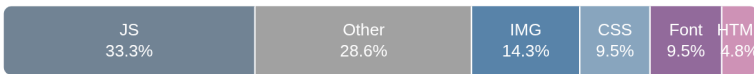
Page Details



Total Page Size - 424KB



Total Page Requests - 21



How does this affect me?

Modern web users have a short attention span and expect a fast and seamless website experience. Delivering that fast experience can result in more traffic, more conversions, and more happiness.

As if you didn't need more incentive, **Google use Page Speed and Page Experience (including Web Vitals) signals in their ranking algorithm.**

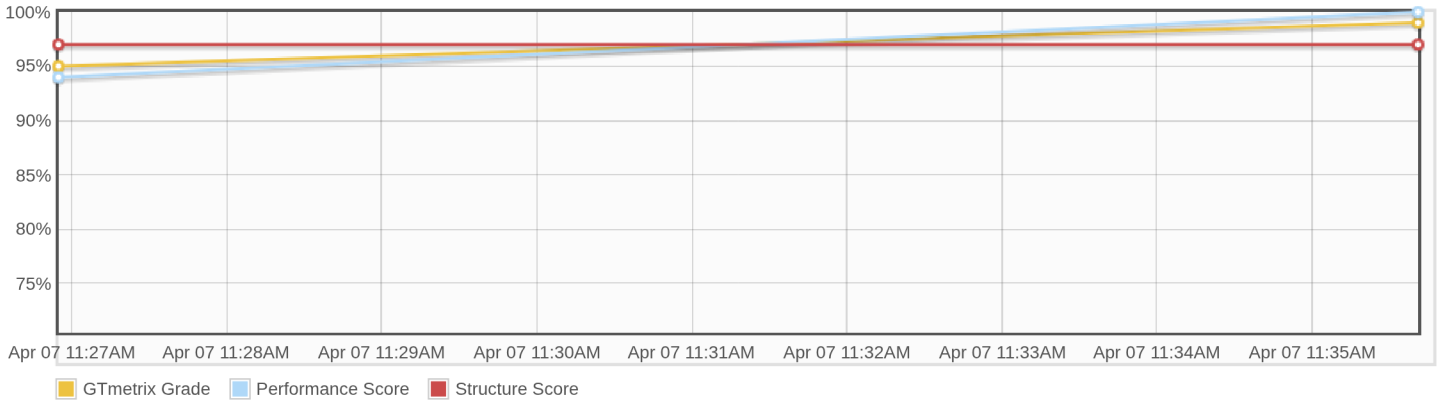
About GTmetrix



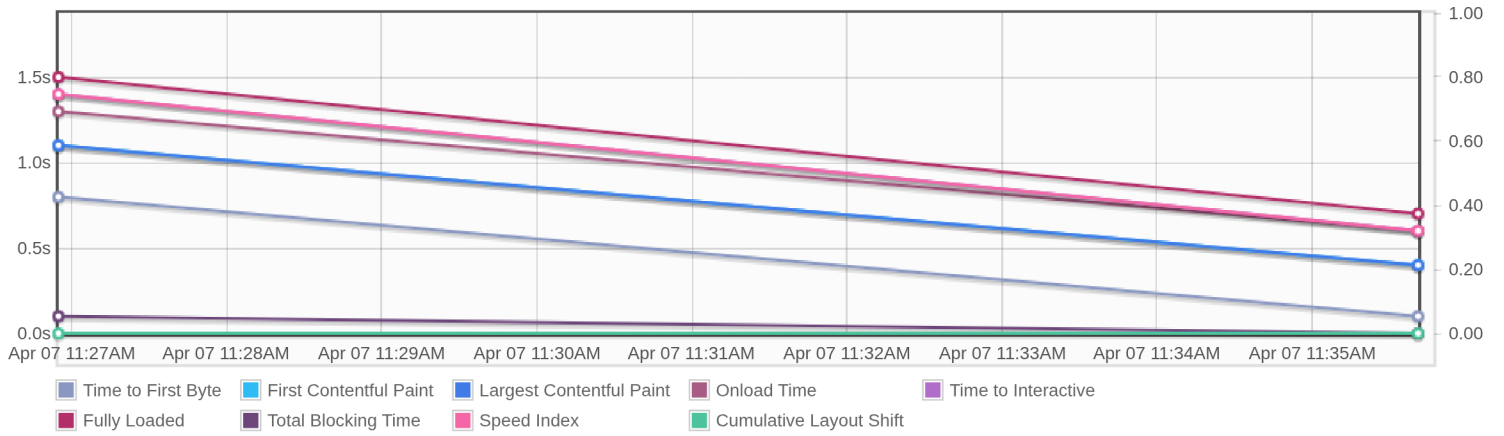
GTmetrix was developed as a tool for customers to easily test the performance of their webpages.

[Learn more about us.](#)

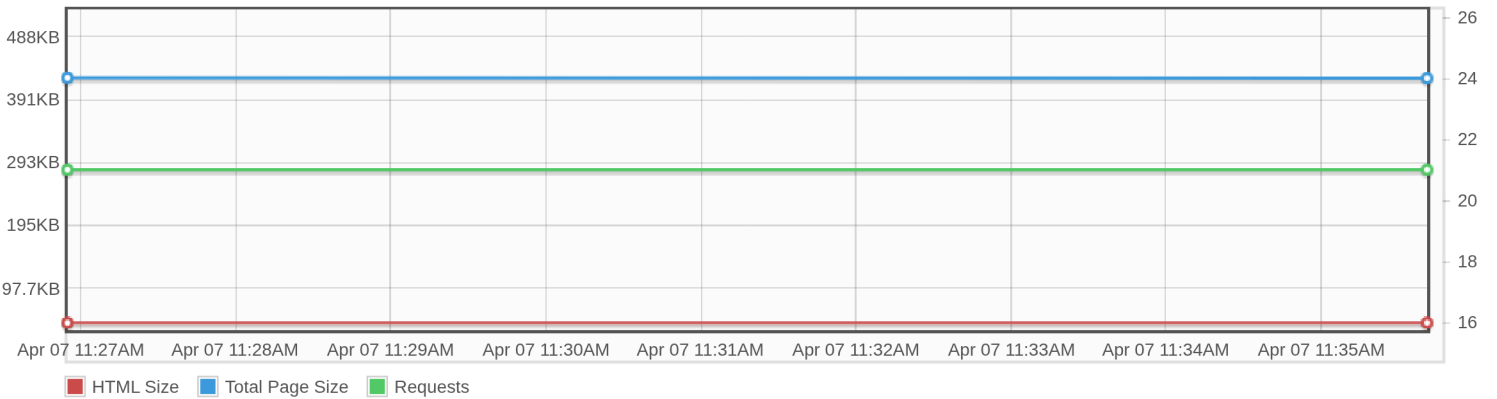
Page scores



Page metrics

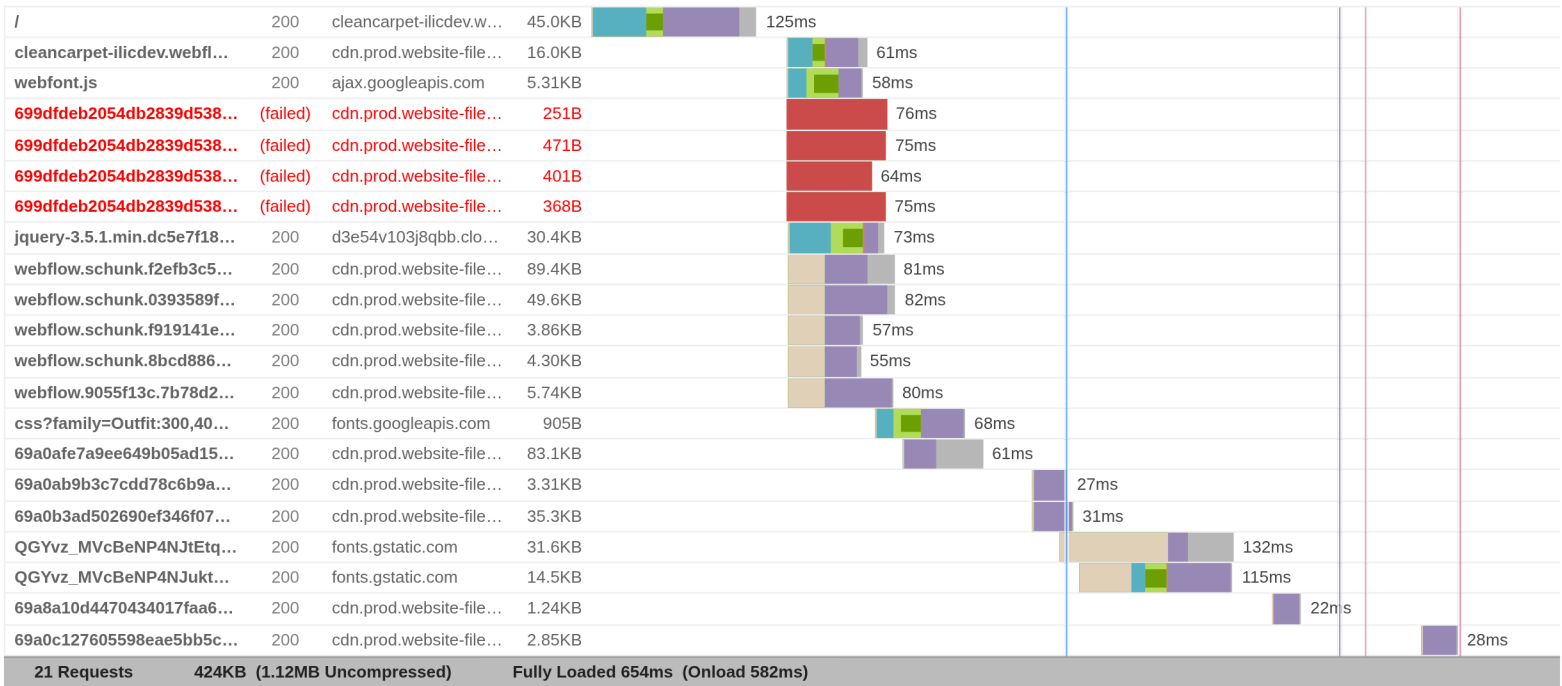


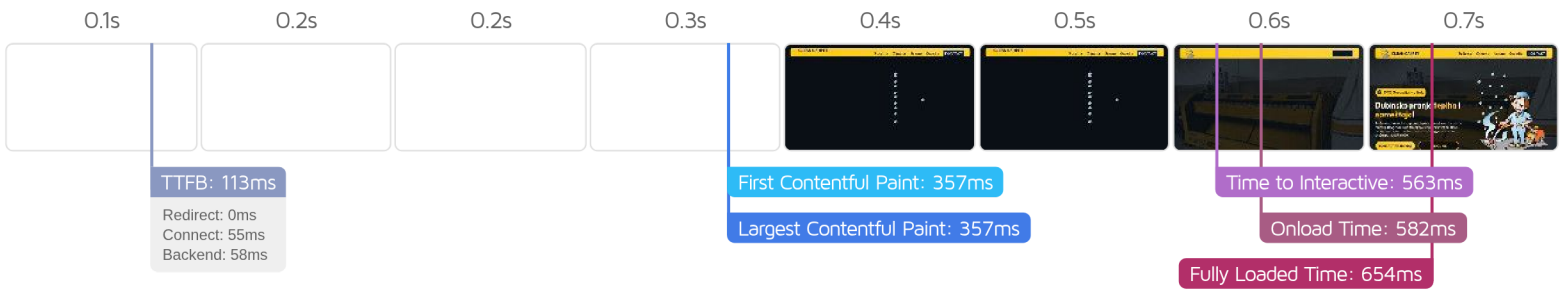
Page sizes and request counts



The waterfall chart displays the loading behaviour of your site in your selected browser. It can be used to discover simple issues such as 404's or more complex issues such as external resources blocking page rendering.

Dubinsko Pranje Tepiha i Nameštaja | Clean Carpet Beograd





Performance Metrics

<p>First Contentful Paint</p> <p>How quickly content like text or images are painted onto your page. A good user experience is 0.9s or less.</p>	<p>Good - Nothing to do here</p> <p>357ms</p>	<p>Time to Interactive</p> <p>How long it takes for your page to become fully interactive. A good user experience is 2.5s or less.</p>	<p>Good - Nothing to do here</p> <p>563ms</p>
<p>Speed Index</p> <p>How quickly the contents of your page are visibly populated. A good user experience is 1.3s or less.</p>	<p>Good - Nothing to do here</p> <p>646ms</p>	<p>Total Blocking Time</p> <p>How much time is blocked by scripts during your page loading process. A good user experience is 150ms or less.</p>	<p>Good - Nothing to do here</p> <p>34ms</p>
<p>Largest Contentful Paint</p> <p>How long it takes for the largest element of content (i.e., a hero image) to be painted on your page. A good user experience is 1.2s or less.</p>	<p>Good - Nothing to do here</p> <p>357ms</p>	<p>Cumulative Layout Shift</p> <p>How much your page's layout shifts as it loads. A good user experience is a score of 0.1 or less.</p>	<p>Good - Nothing to do here</p> <p>0</p>

Browser Timings

Redirect	0ms	Connect	55ms	Backend	58ms
TTFB	113ms	First Paint	357ms	DOM Int.	561ms
DOM Loaded	563ms	Onload	582ms	Fully Loaded	654ms

IMPACT	AUDIT	
Med-Low	Use explicit width and height on image elements <small>CLS</small>	2 images found
Med-Low	Serve static assets with an efficient cache policy	Potential savings of 49.2KB
Low	Avoid an excessive DOM size <small>TBT</small>	1,208 elements
Low	Reduce JavaScript execution time <small>TBT</small>	177ms spent executing JavaScript
Low	Avoid chaining critical requests <small>FCP LCP</small>	13 chains found
Low	Ensure text remains visible during webfont load <small>FCP LCP</small>	2 fonts found
Low	Avoid long main-thread tasks <small>TBT</small>	3 long tasks found
Low	Avoid non-composited animations <small>CLS</small>	2 animated elements found
Low	Avoid enormous network payloads <small>LCP</small>	Total size was 423KB
Low	Reduce unused CSS <small>FCP LCP</small>	Potential savings of 11.6KB
Low	Reduce unused JavaScript <small>LCP</small>	Potential savings of 54.4KB
N/A	Largest Contentful Paint element <small>LCP</small>	360 ms
N/A	Avoid large layout shifts <small>CLS</small>	2 layout shifts found
N/A	Minimize main-thread work <small>TBT</small>	Main-thread busy for 698ms
N/A	Eliminate render-blocking resources <small>FCP LCP</small>	Potential savings of 11ms
N/A	Reduce initial server response time <small>FCP LCP</small>	Root document took 57ms
N/A	Reduce the impact of third-party code <small>TBT</small>	Third-party code blocked the main thread for 34ms
N/A	Avoid serving legacy JavaScript to modern browsers <small>TBT</small>	
N/A	User Timing marks and measures	