

# Use Case Management

## Bring order to your AI portfolio

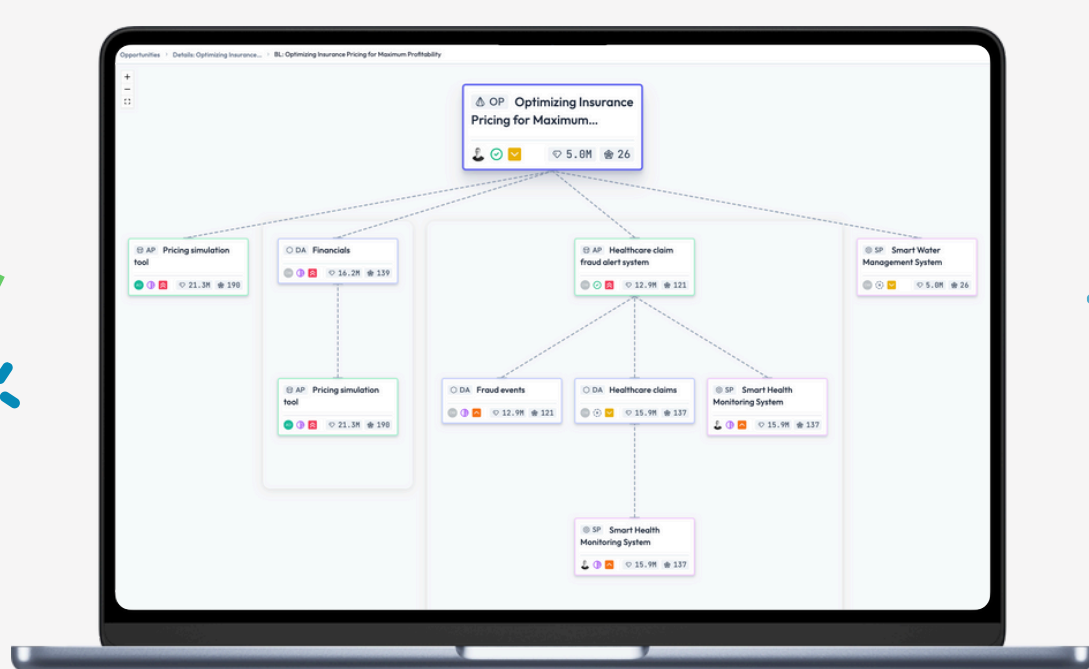
Create a single source of truth for your AI use case portfolio. Ensure alignment, efficiency, and long-term business value.

✗ Too many AI use cases scattered across teams?

✗ No clear tracking or visibility?



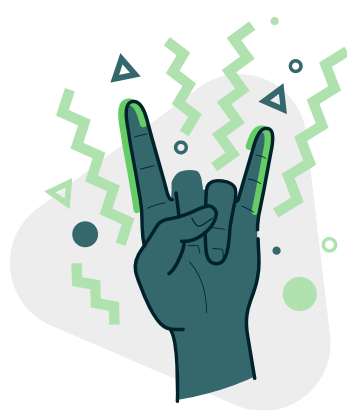
Use Case Management with Mindfuel brings it all together in one place.



## What you get:

### → Simplified Use Case Collection

Easily gather use cases from across your organization. Standardize the intake process and break down silos from the start.



### → Complete Portfolio Visibility

Track every use case in a single source of truth. Spot overlaps, align initiatives and drive real business outcomes.

### → End-to-End Lifecycle Oversight

Manage every phase of your AI initiatives from idea to operation, ensuring consistency and long-term value.



## Key Tools to Make It Happen:

✓ **Business Lineage:** See connections between use cases, spot dependencies, and align faster.

✓ **List, Card, and Tables Views:** See your portfolio your way. Navigate your use cases in the format that works best for you.

✓ **Custom Views & Favorites:** Build dashboards that show exactly what you and your team need.

✓ **Solution Management:** Map your use cases, spot synergies and reuse assets to move faster.

✓ **Scope Management:** Keep requirements clear and connect use cases to JIRA for easy collaboration.

Tame the chaos. Manage your AI portfolio in one place.

[Book a demo](#) to see Mindfuel in action.