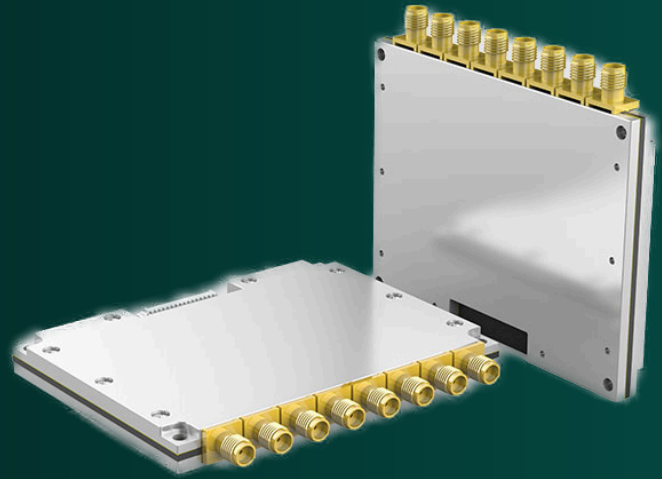


### UHF | RAIN - Reader Module **CHAINWAY - CM710-8**

- EPCglobal Gen2 (ISO18000-6C)
- Based on Impinj E710 chipset
- Adjustable RF output power up to 30 dBm
- UART host communication (3.3V TTL)
- Low power consumption



### UHF | RAIN - Reader Module 8-port UHF RFID module for OEM integration

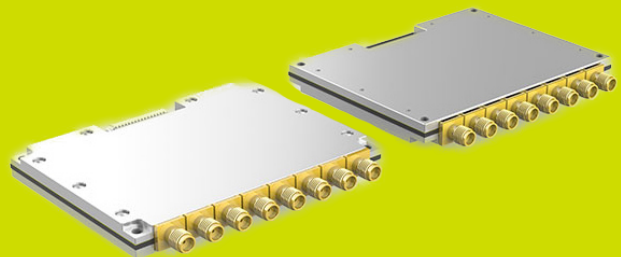
The Chainway CM710-8 is a high-performance 8-port UHF RFID module designed for integration into fixed RFID readers requiring scalable, multi-antenna architectures. Powered by the Impinj E710 chipset with Gen2X support, the module delivers reliable UHF performance with excellent read accuracy and stability.

Its compact form factor, low power consumption and efficient heat dissipation enable continuous operation in demanding industrial environments. With adjustable RF output power, high receive sensitivity and UART-based host communication, the CM710-8 supports the development of high-throughput RFID systems for logistics, warehousing and production automation.

### Common Applications

- Embedded RFID terminals
- Warehouse and logistics solutions
- Apparel and retail inventory systems
- Production line automation
- Mobile RFID readers

# CHAINWAY



## TECHNICAL SPECIFICATIONS

### Physical Characteristics

Dimensions	93.0 mm x 79.75 mm x 8.9 mm
Weight	108.0 g / 3.81 oz.

### RFID Features

RF Chip	Impinj E710
Impinj Gen2X	Supported
Air Interface Protocol	EPCglobal Gen2 (ISO18000-6C)
Working Frequency	865-868 / 920-925 / 902-928 MHz (custom-design for frequency band )
Output Power	5-30dBm adjustable; 1dB step interval; +/- 1dB precision
Output Power Flatness	+/- 0.2dB
Antenna Interface	8-channel 50Ω RF connector SMA receptacle
Regions Supported	FCC 902-928 MHz; ETSI 865.6-867.6 MHz; China 920-925MHz; Others for customization (865-868, 902-928MHz)
Receive Sensitivity	< -86 dBm
Tag RSSI	Supported
Antenna Detector	Supported
Ambient Temp Monitor	Supported
Working Mode	Single/DRM

### Communication Interface

Connector	15 PIN FPC Connector
Host Communication	UART 3.3V TTL Level Baud Rate: 115200bps

### Power Supply

Input Voltage	DC 3.5-5.25V
Power Consumption in RF Output Mode	7.5 W
Power Consumption in Standby (EN high TTL level)	0.175 W
Power Consumption in Power Down (EN low TTL level)	42.5 μW

### User Environment

Operating Temp.	-13°F to 149°F / -25°C to 65°C
Storage Temp.	-40°F to 185°F / -40°C to 85°C
Humidity	10% - 95%

### Reading Performance

Fastest Read Rate	950+ tags/s
Reading Range	Up to 34m (with 6dBi antenna & M750 tag)

### Model

8-Ports RFID Module	CM710-8
Development Board Module	CM-X_EDCB