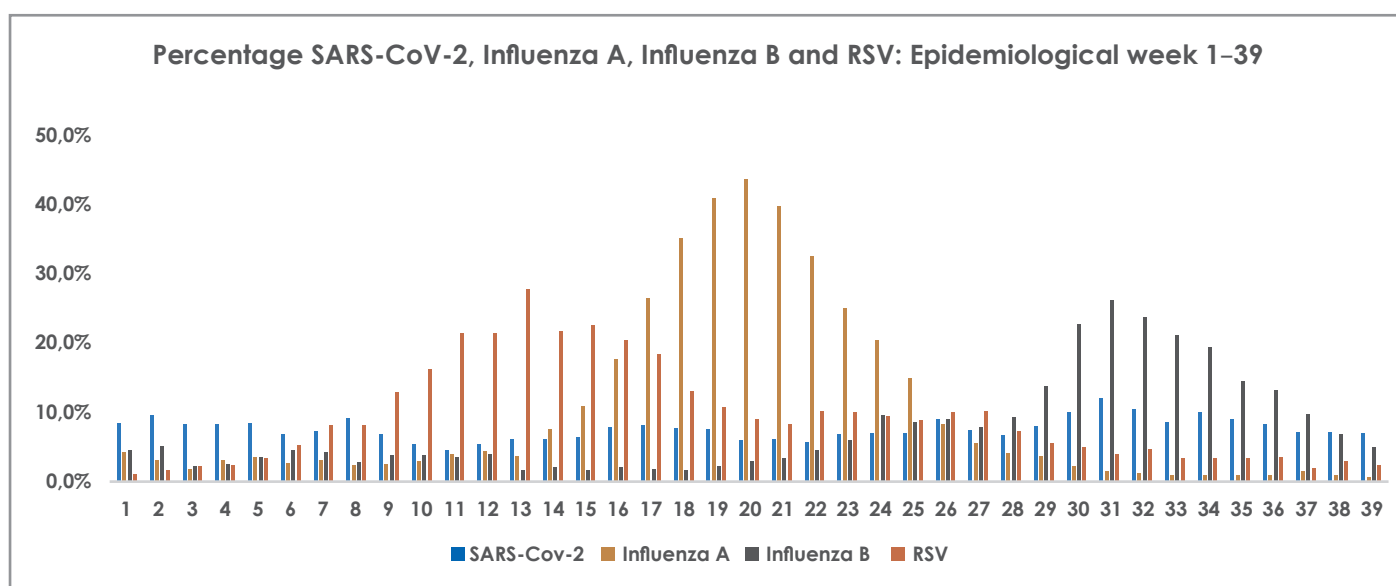
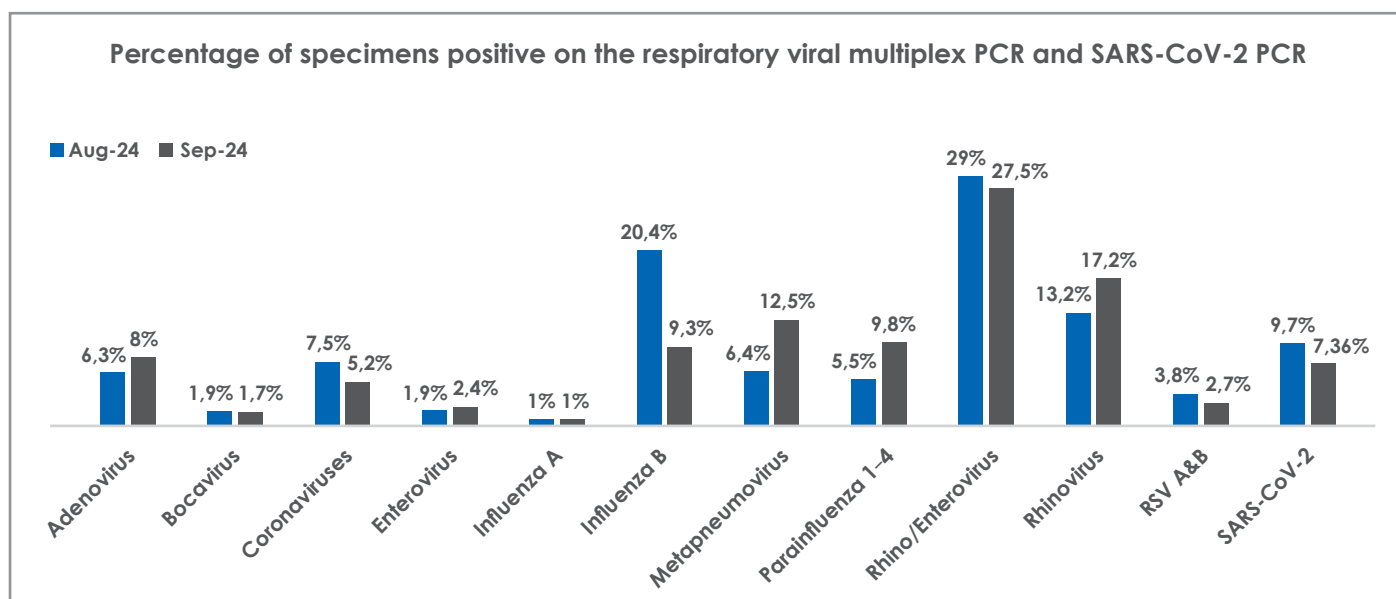


Respiratory virus multiplex PCR and SARS-CoV-2 PCR: All age groups

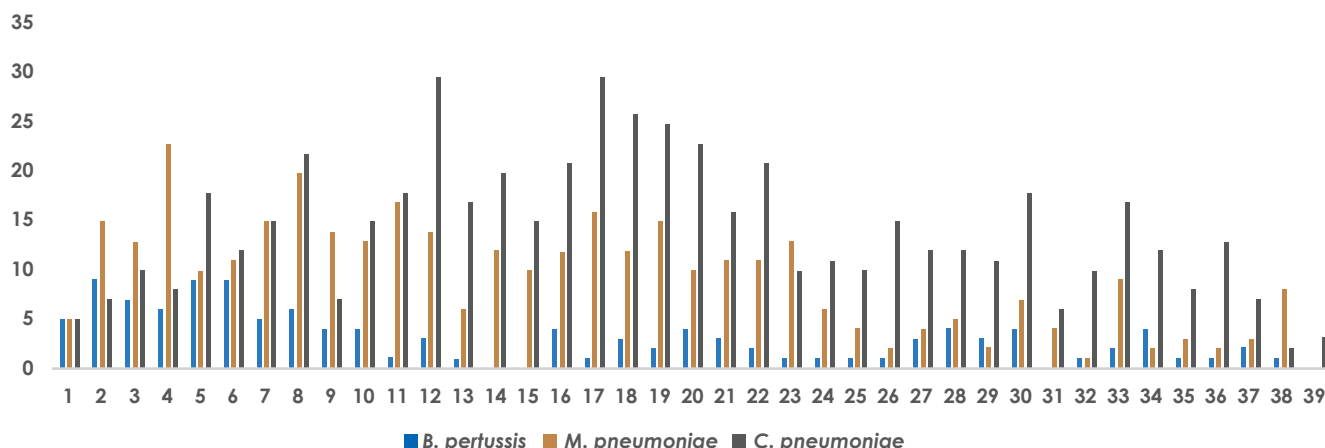


Comments

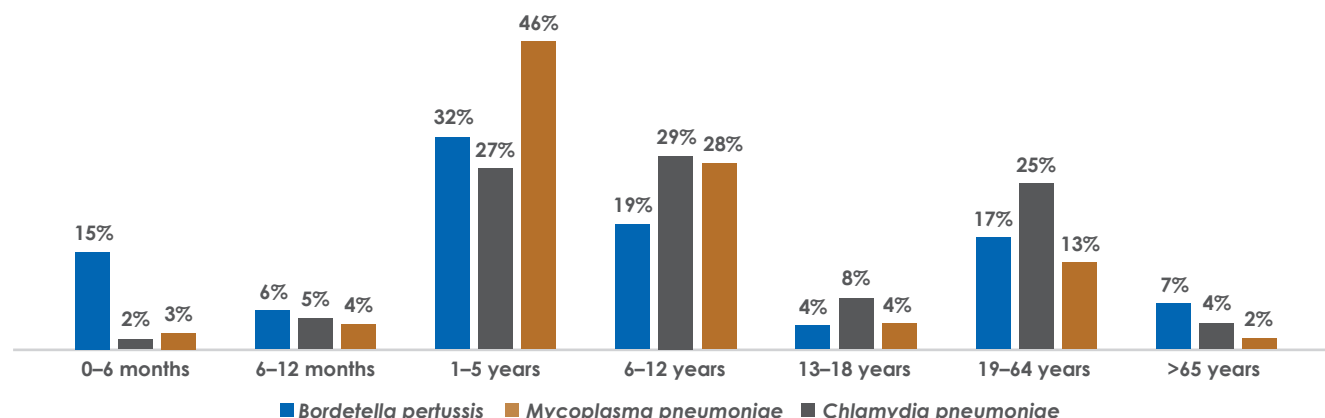
- The most frequently detected viruses across all age groups during September were: Rhino/enterovirus (27.5%), rhinovirus (17.2%) and metapneumovirus (12.5%).
- Epidemiological week 1-39:
 - SARS-CoV-2: During the last four weeks, the number of specimens that tested positive has remained stable.
 - Influenza A: The number of specimens testing positive for influenza A peaked during epidemiological week 20, with 43.6% of all specimens submitted testing positive. This declined to 0.5% in epidemiological week 39.
 - Influenza B: The number of specimens testing positive for influenza B peaked at 26% in epidemiological week 31, and declined to 4.8% during epidemiological week 39.
 - The number of specimens testing positive for RSV peaked in epidemiological week 13, with 27.8% of all specimens submitted testing positive. The overall positivity rate declined to 2.4% in epidemiological week 39.

Atypical bacterial pathogens: *Bordetella pertussis*, *Mycoplasma pneumoniae*, *Chlamydia pneumoniae* and *Legionella pneumophila*

Atypical bacterial pathogens: Number of cases per epidemiological week



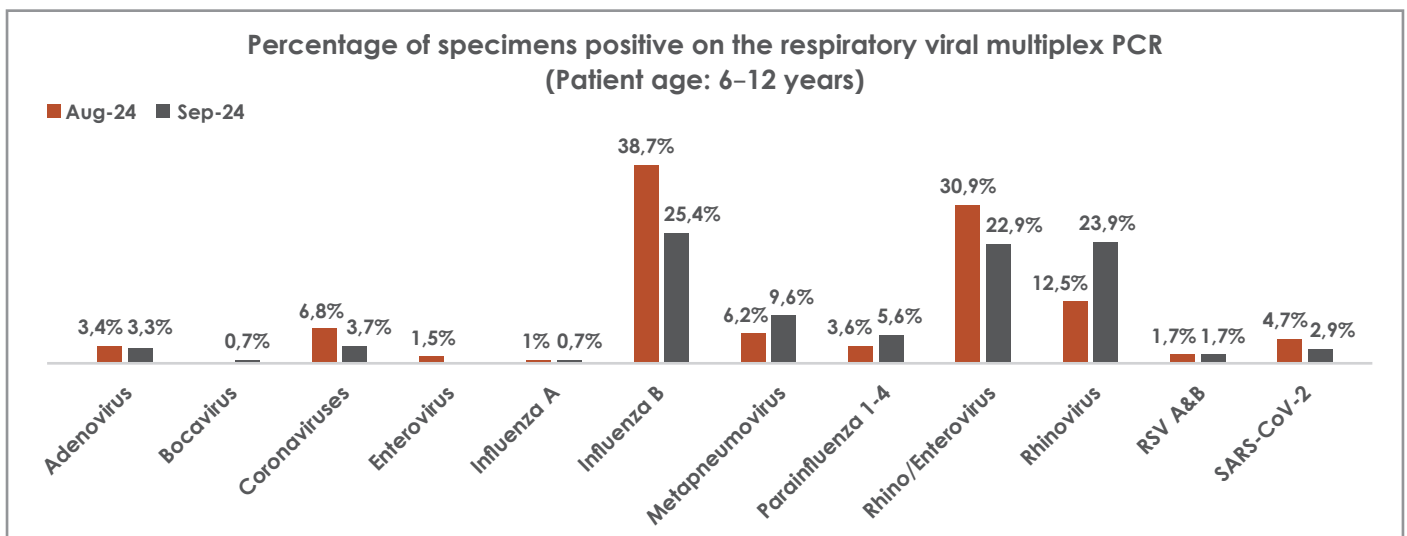
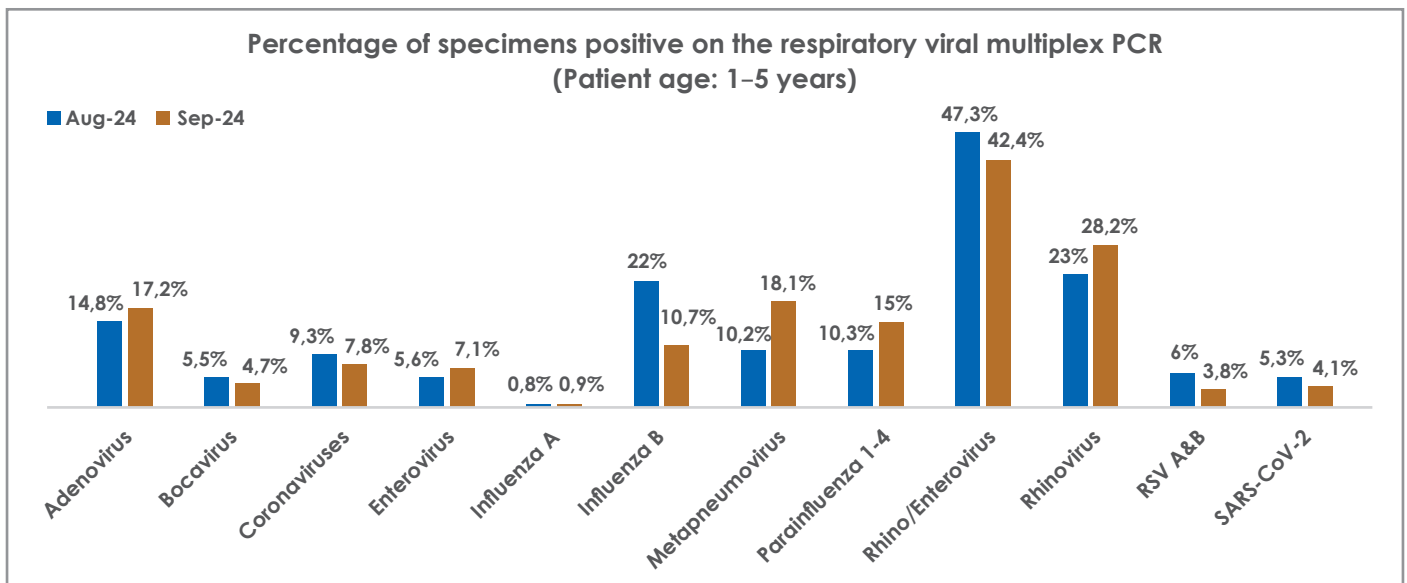
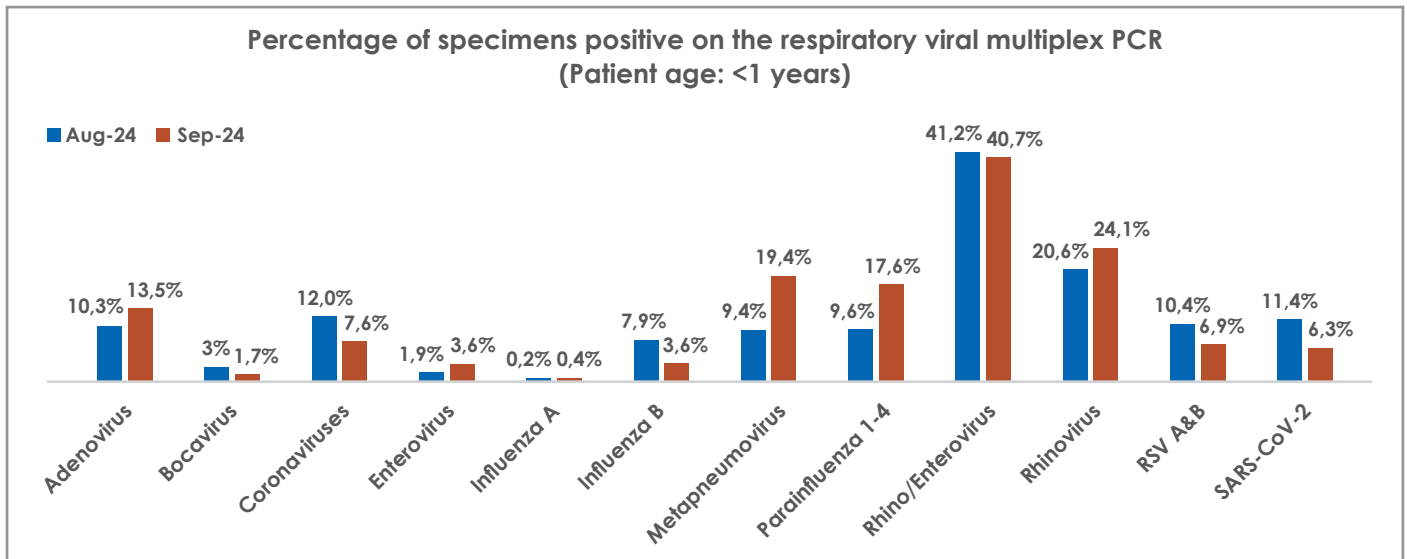
Age distribution of atypical respiratory pathogens: Epidemiological week 1-39



Comments

- Bordetella pertussis*, *Mycoplasma pneumoniae* and *Chlamydia pneumoniae* continue to circulate at low levels. One case of *Legionella pneumophila* pneumonia was detected by PCR testing during September.
- In paediatric patients, most *B. pertussis* cases were detected in the 1-5 year age group (32%). Twenty four percent of cases were detected in patients >18 years and 15% in patients <6 months old.
- For both *Mycoplasma pneumoniae* and *Chlamydia pneumoniae*, the majority of cases were detected in patients between 1-12 years of age.

Respiratory virus multiplex PCR and SARS-CoV-2 PCR: All age groups



Comments

Significant findings per age group during September:

- Less than 1 year of age: A significant increase in metapneumovirus (19.4% positivity rate), as well as of parainfluenza virus (17.6% positivity rate), was noted during September. The positivity rate of RSV and influenza B continued to decrease in this age group from August to September.
- 1–5 years of age: An increase in the positivity rate of metapneumovirus (18.1%), adenovirus (17.2%) and parainfluenza virus (15%) was observed in this age group. Influenza B and RSV positivity rates continued to decline from August to September.
- 6–12 years of age: The influenza B positivity rate in this age group peaked at 38.7% during August, though declining, it still remains the most common virus detected in this age group with a positivity rate of 25.4% during September.