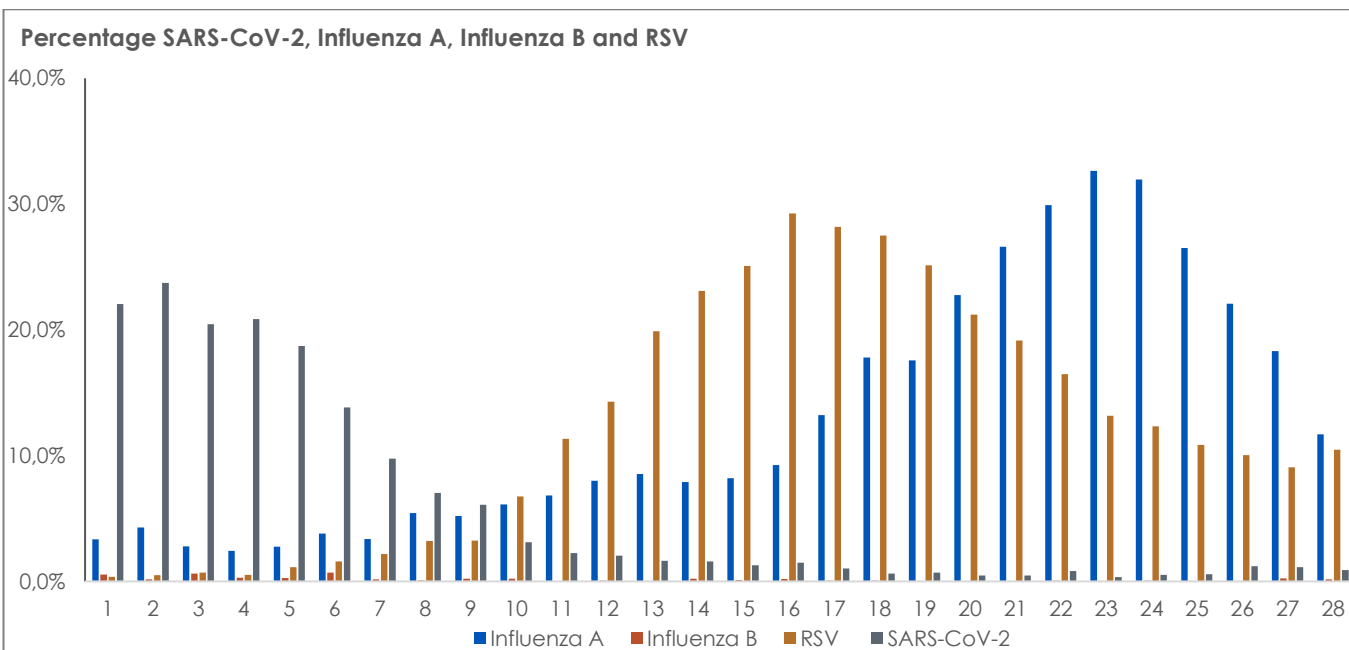
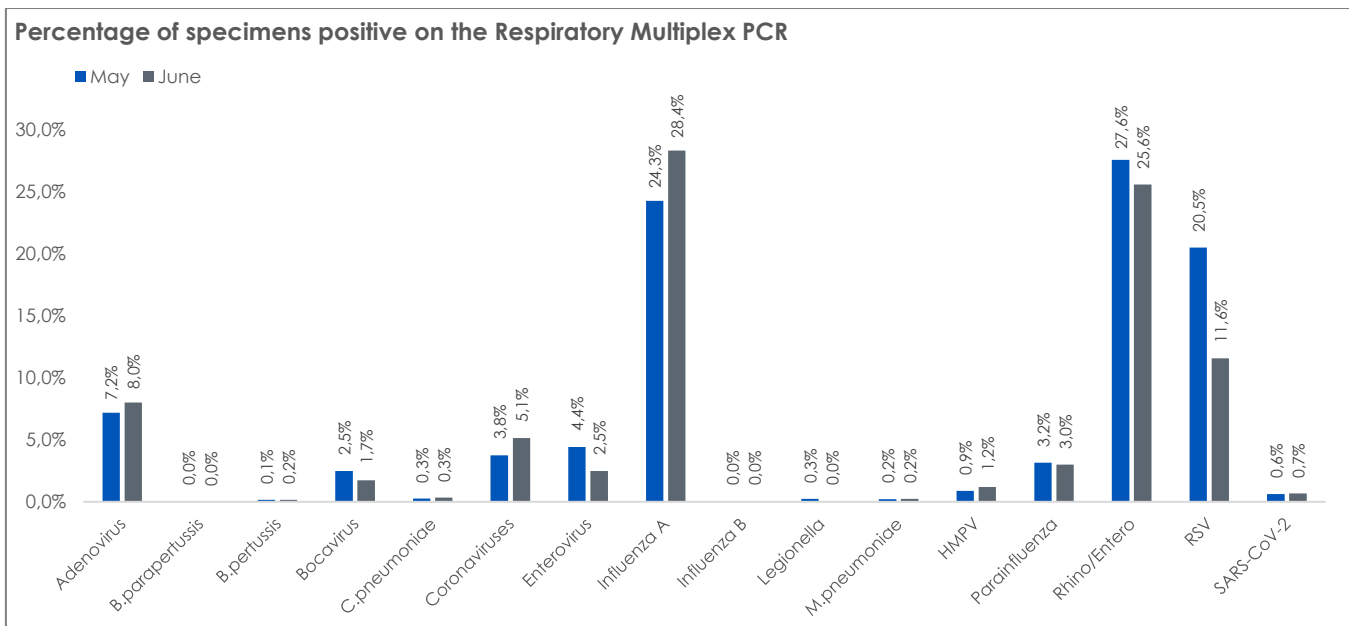


# RESPIRATORY VIRUS STATISTICS

## May/June 2025



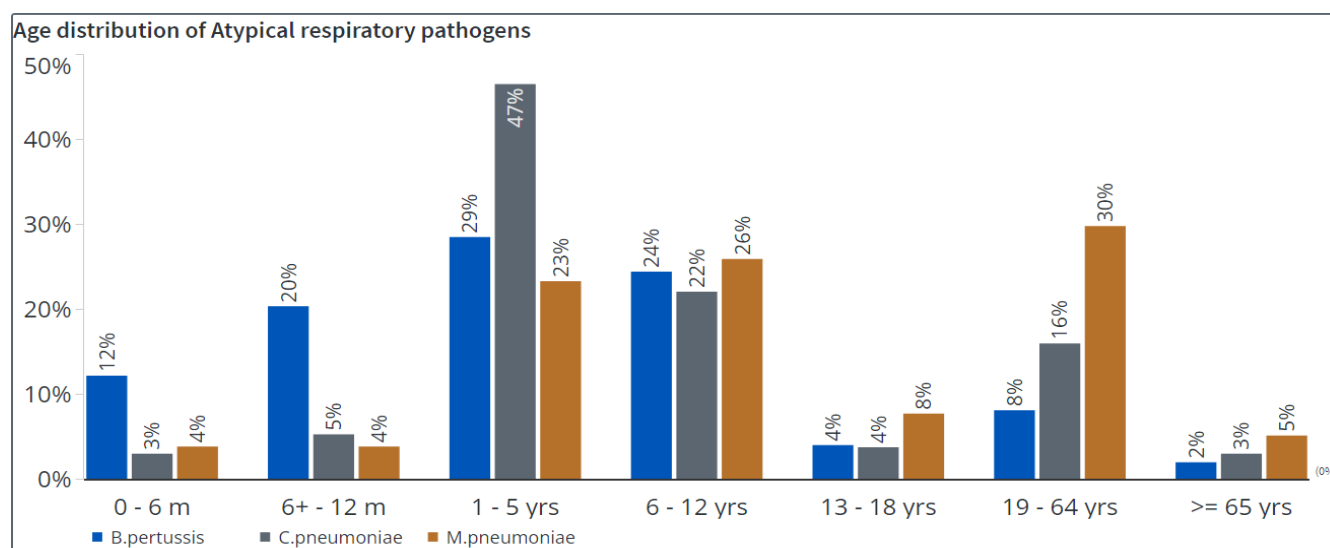
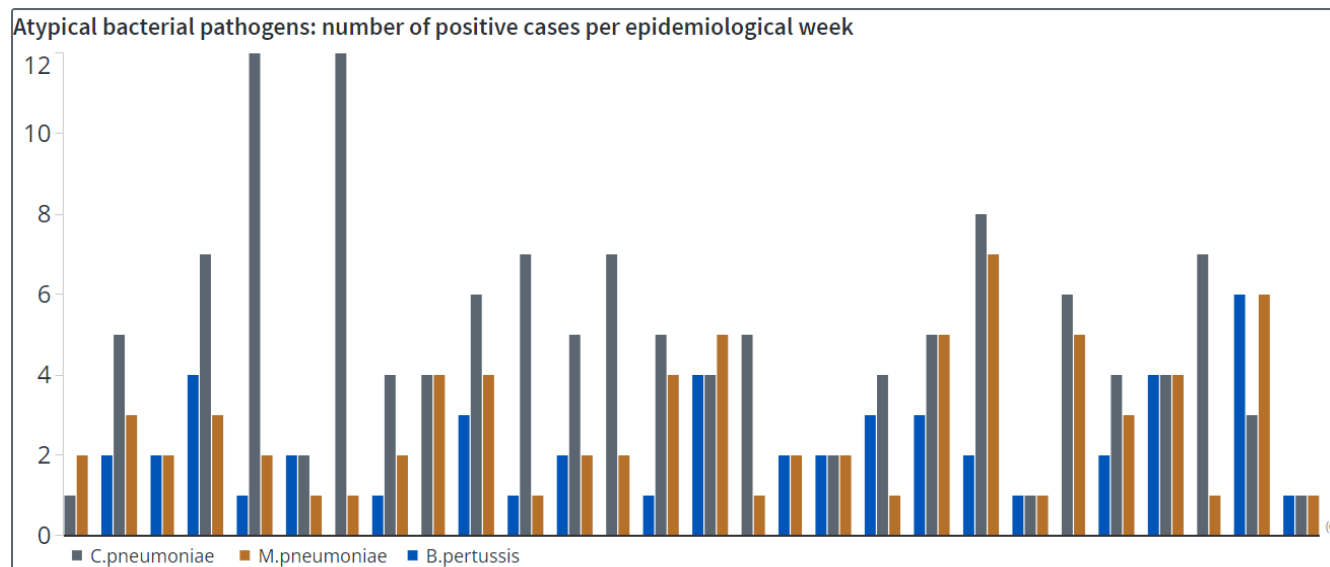
### Respiratory Virus Multiplex PCR and SARS-CoV-2 PCR: All age groups



### Comments

- The most frequently detected viruses across all age groups during June were: Influenza A (28.4%) and rhino/enterovirus 25.6%.
- Epidemiological week 1-28:
  - SARS-CoV-2: The number of specimens that tested positive remained low with 0.9% of specimens testing positive in week 28.
  - Influenza A and B: The number of specimens testing positive for influenza A peaked in week 23 with 32.6% of specimens testing positive for influenza A. Influenza B rates remain low with 0.2% of specimens testing positive in week 28.
  - The RSV positivity rate peaked at 29.3% during week 16, decreasing to 9.1% in week 27. A slight increase in the RSV positivity rate to 11.2% was noted in week 28.

## Atypical bacterial pathogens: *Bordetella pertussis*, *Mycoplasma pneumoniae*, *Chlamydia pneumoniae* and *Legionella pneumophila*



### Comments

- Bordetella pertussis*, *Mycoplasma pneumoniae* and *Chlamydia pneumoniae* continue to circulate at low levels. One case of *Legionella pneumophila* pneumonia was detected by PCR testing during June.
- In paediatric patients most *B. pertussis* cases were detected in the 1-5 year age group (29%).
- The majority of *C. pneumoniae* cases were detected in the 1-12 year age group. The majority of *M. pneumoniae* cases were detected in adults 19-64 years.

# RESPIRATORY VIRUS STATISTICS

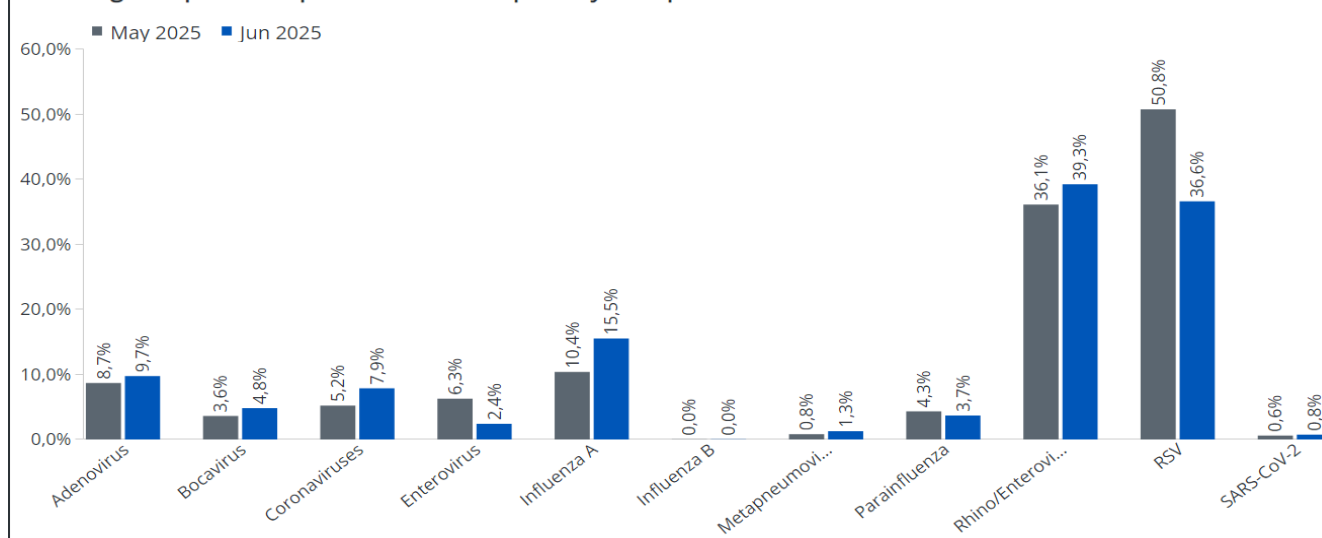
## May/June 2025



### Paediatric Respiratory Viral Multiplex PCR data

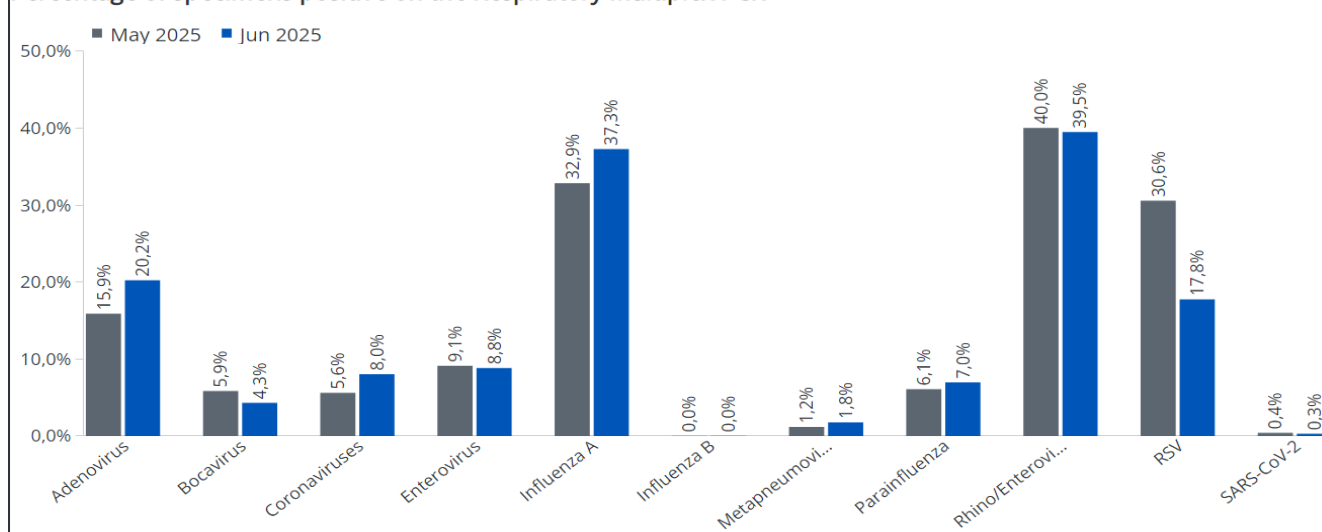
#### Patient age group < 1 year old

Percentage of specimens positive on the Respiratory Multiplex PCR



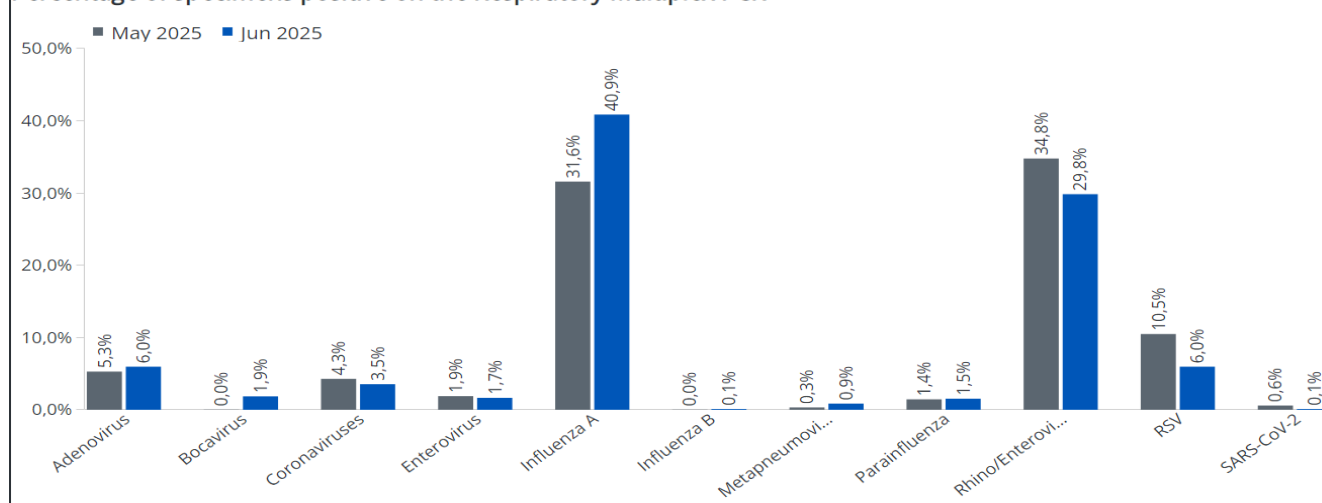
#### Patient age group 1-5 years old

Percentage of specimens positive on the Respiratory Multiplex PCR



#### Patient age group 6-12 years old

Percentage of specimens positive on the Respiratory Multiplex PCR



### Comments

Significant findings per age group during June:

- Less than 1 year of age: The most common virus detected in this age group remains RSV with a positivity rate of 36.6%. A significant increase in influenza A was also noted in this age group from 10.4% positivity rate in May to 15.5% during June.
- 1-5 years of age: The most common viruses detected in this age group were rhino/enterovirus (39.5%), influenza A (37.3%) and adenovirus (20.2%).
- 6-12 years of age: the most common viruses detected in this age group were influenza A (40.9%) and rhino/enterovirus (29.8%).