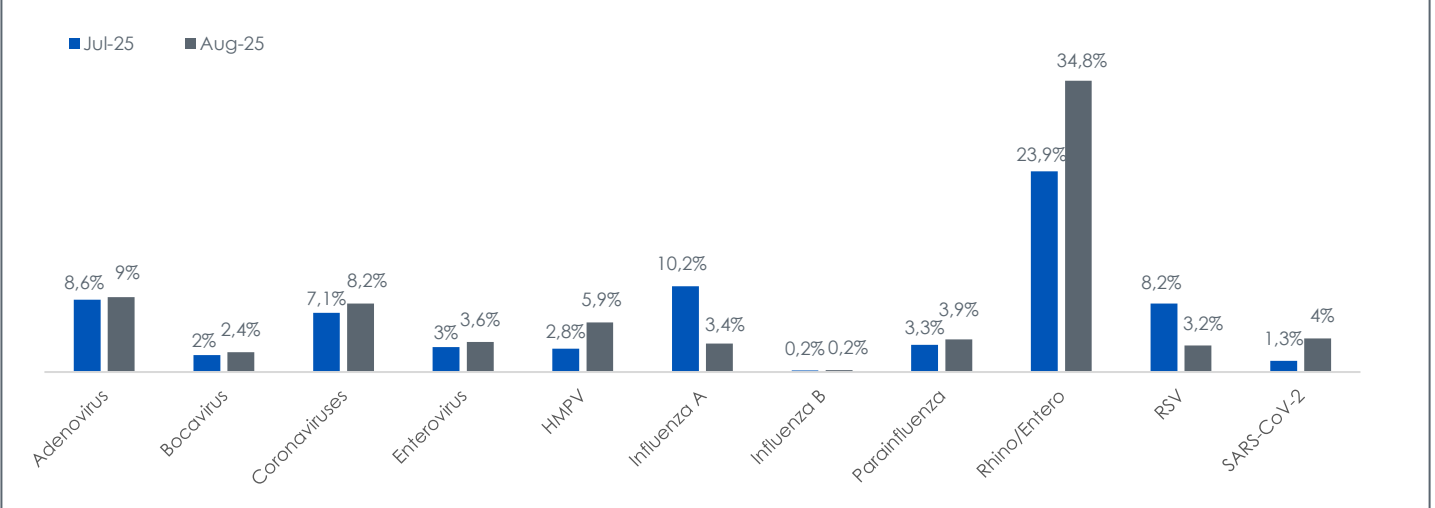
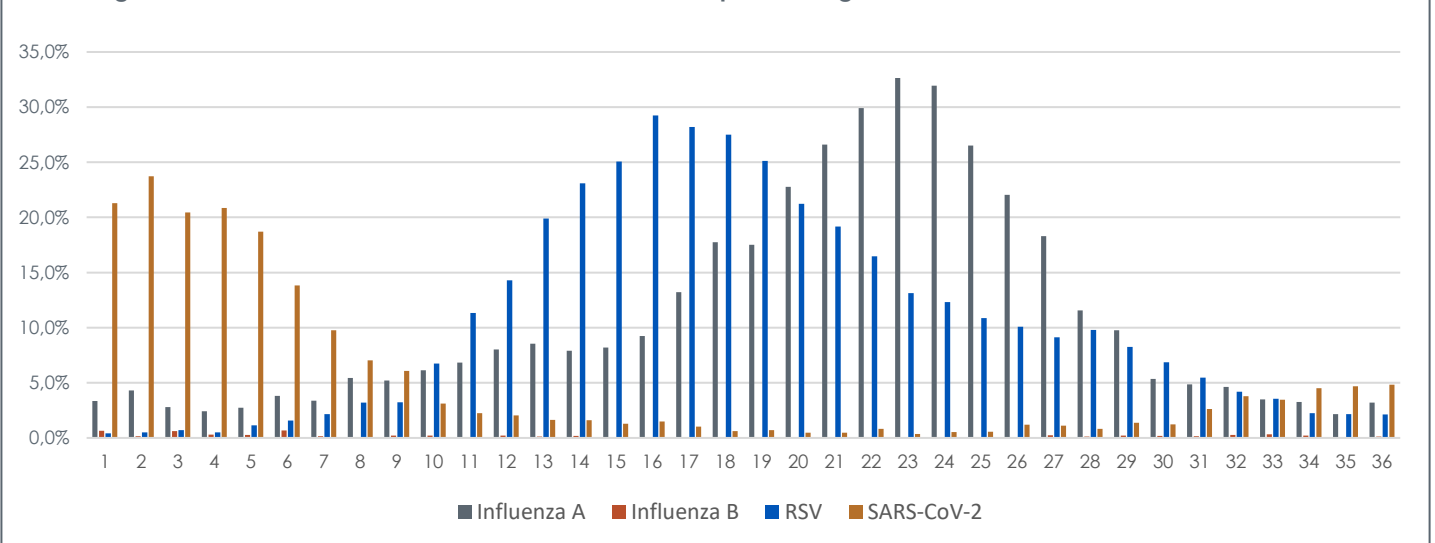


Respiratory Virus Multiplex PCR and SARS-CoV-2 PCR: All age groups

Percentage of specimens positive on the respiratory viral multiplex PCR and SARS-CoV-2 PCR



Percentage SARS-CoV-2, Influenza A, Influenza B, and RSV - Epidemiological week 1 - 36

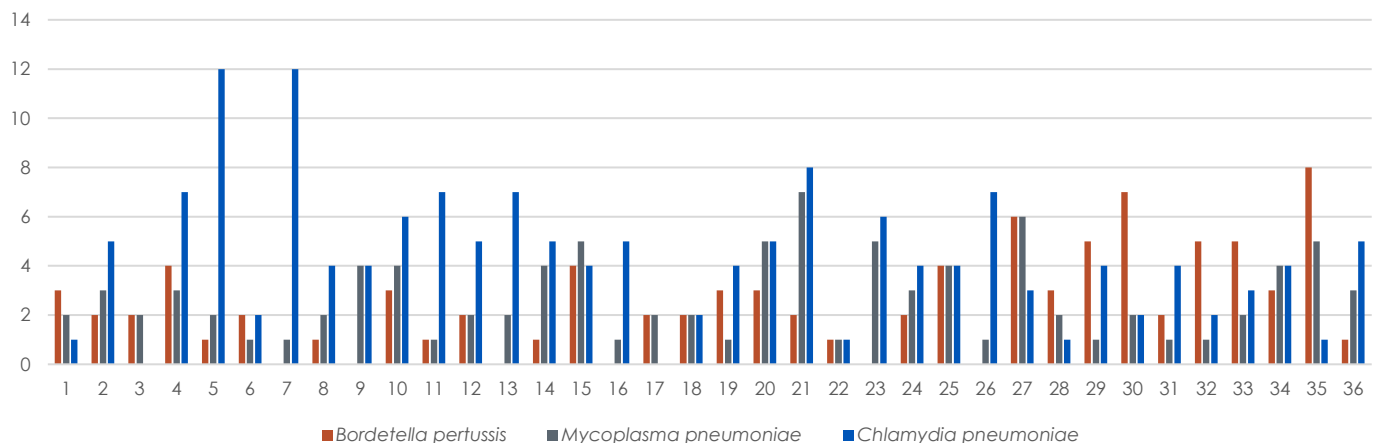


Comments

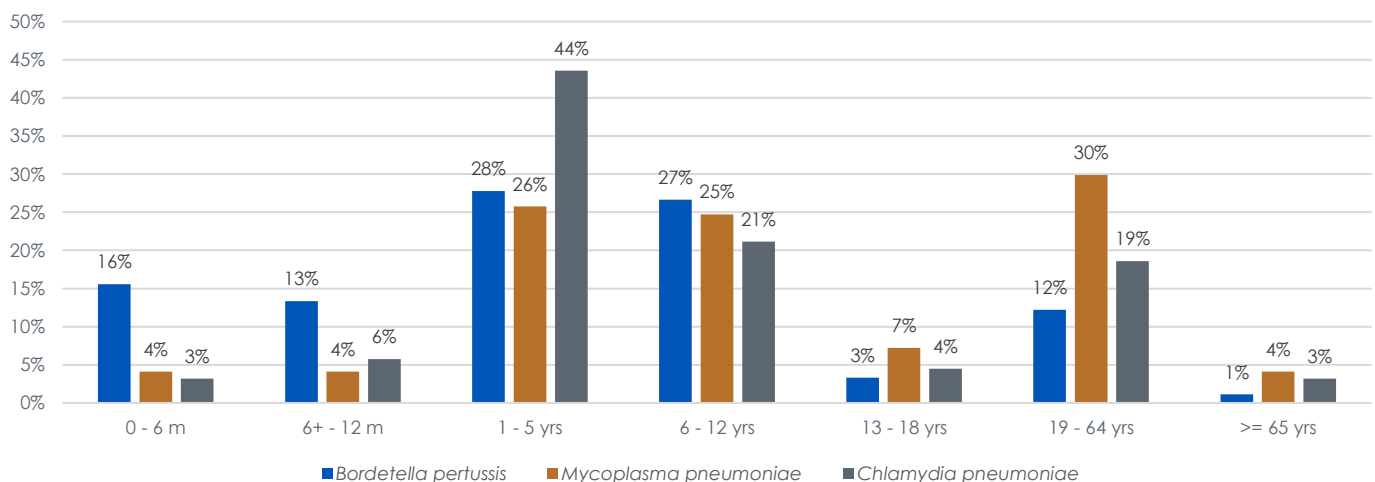
- The most frequently detected viruses across all age groups during August were: rhino/enterovirus (34.8%), adenovirus (9%) and the seasonal coronaviruses (8.2%)
- Epidemiological week 1-36:
 - SARS-CoV-2: The number of specimens that tested positive remained low with 4.8% of specimens testing positive in week 36.
 - Influenza A and B: The number of specimens testing positive for influenza A peaked in week 23 with 32.6% of specimens testing positive for influenza A, decreasing to 3.2% in week 36. Influenza B rates have remained low with 0.1% of specimens testing positive in week 36.
 - The RSV positivity rate peaked at 29.3% during week 16, decreasing to 2.1% in week 36.

Atypical bacterial pathogens: *Bordetella pertussis*, *Mycoplasma pneumoniae*, *Chlamydia pneumoniae* and *Legionella pneumophila*

Atypical bacterial pathogens: number of positive cases per epidemiological week 1 - 36



Age distribution of atypical respiratory pathogens: epidemiological week 1 - 36



Comments

- Bordetella pertussis*, *Mycoplasma pneumoniae* and *Chlamydia pneumoniae* continue to circulate at low levels. Six cases of *Legionella pneumophila* pneumonia was detected by PCR testing during August.
- In paediatric patients most *B. pertussis* cases were detected in the 1-5 year age group (28%) and the 6-12 year age group (27%).
- The majority of *C. pneumoniae* cases were detected in the 1-12 year age group. The majority of *M. pneumoniae* cases were detected in adults 19-64 years.

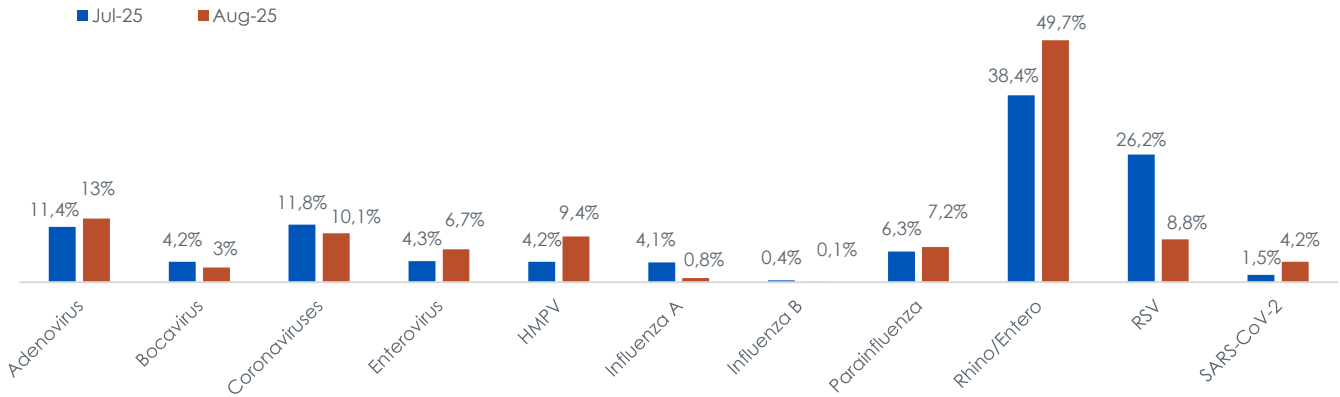
RESPIRATORY VIRUS STATISTICS

July/August 2025

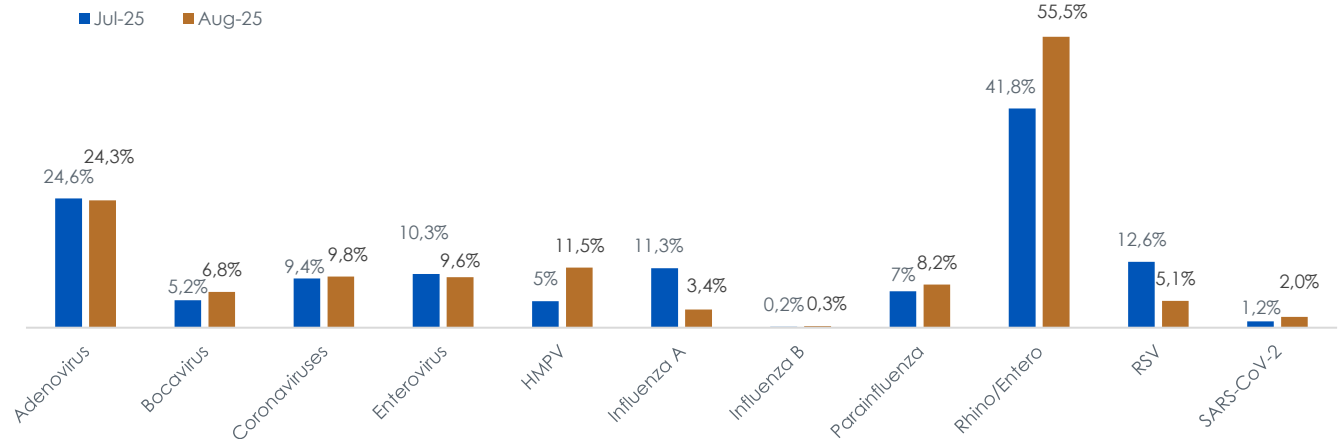


Paediatric Respiratory Viral Multiplex PCR data

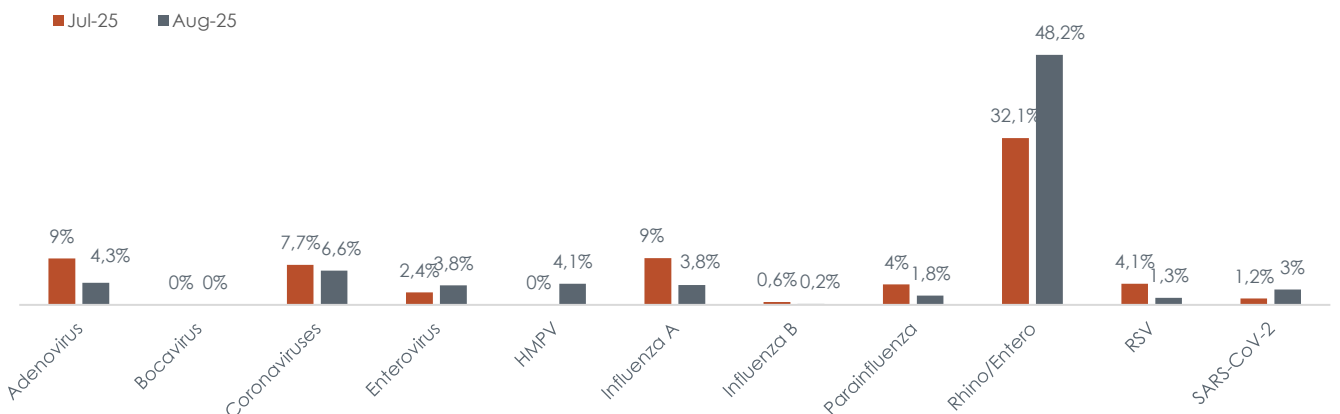
Percentage of specimens positive on the respiratory viral multiplex PCR (Pt age: <1 years)



Percentage of specimens positive on the respiratory viral multiplex PCR (Pt age: 1 - 5 years)



Percentage of specimens positive on the respiratory viral multiplex PCR (Pt age: 6 - 12 years)



Comments

Significant findings per age group during August:

- Less than 1 year of age: The most common viruses detected in this age were rhino/enterovirus (49.7%) and adenovirus (13%).
- 1-5 years of age: The most common viruses detected in this age group were rhino/enterovirus (55.5%) and adenovirus (24.3%).
- 6-12 years of age: the most common virus detected in this age group was rhino/enterovirus (48.2%), with the other viruses circulating at low levels in this age group.