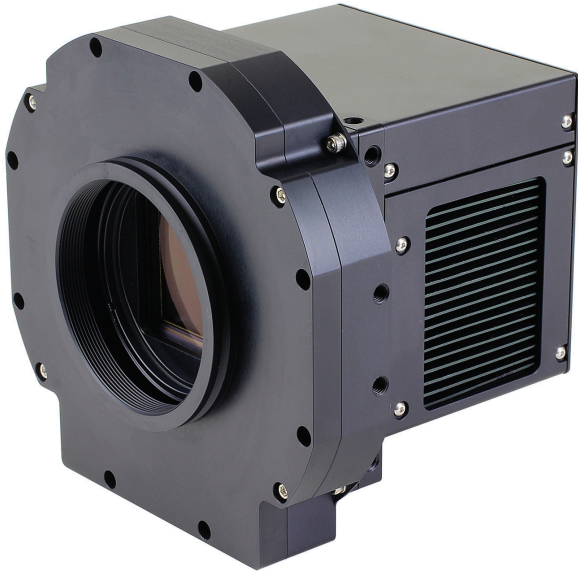
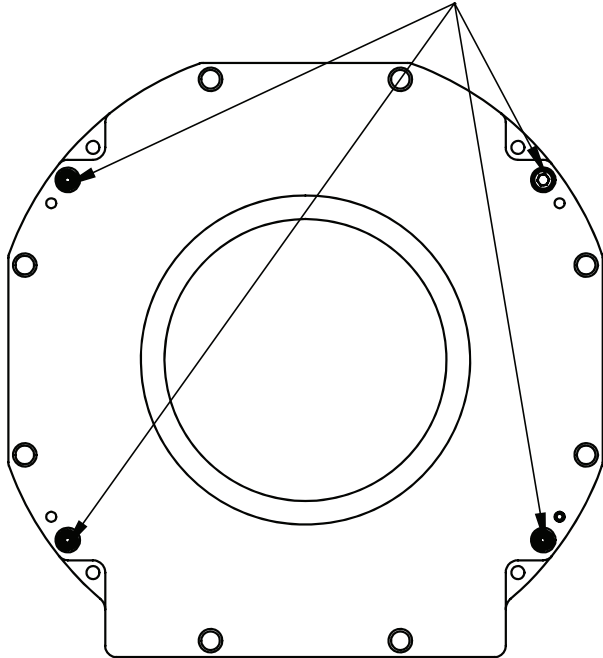


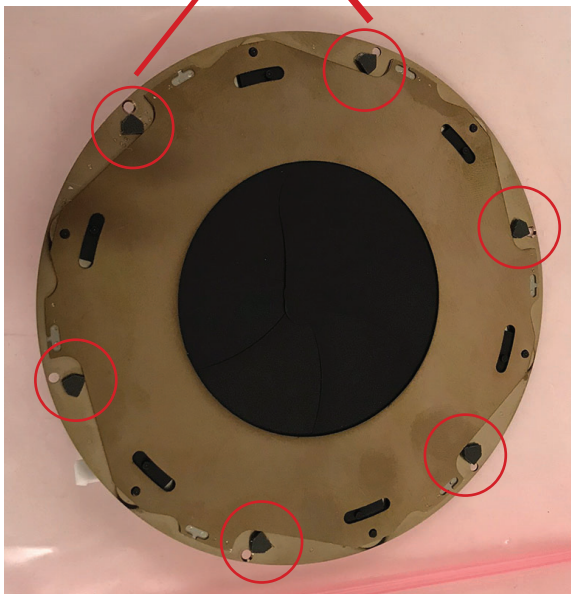
Accessing the 65mm Shutter (Kepler)



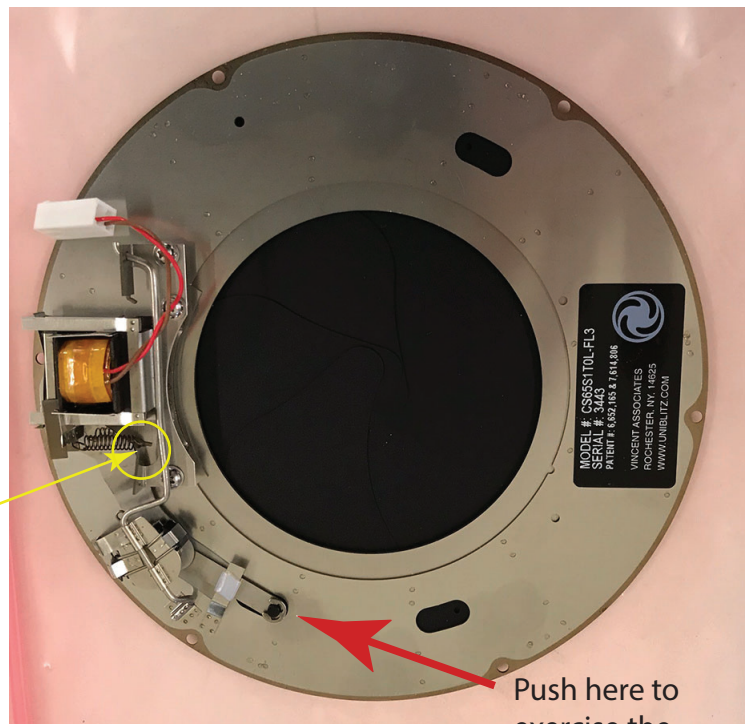
Remove these 4 screws
to access shutter



Sometimes the blades get stuck on
the pads around the outside of the
bottom



If the shutter fails to close 100%, increase
spring tension by gently bending the
arm holding the spring toward the
center of the shutter.



See also: www.fliccamera.com/videos/Vincent65mm_manual_operation.mp4