

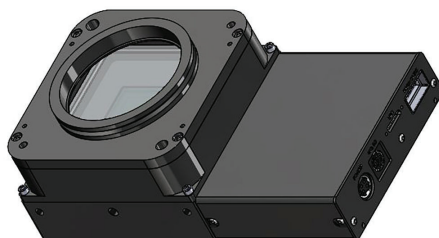
FLI Cameras

Since 2000, FLI has shipped over 20,000 cameras worldwide for a wide variety of applications from life science to astronomy, X-ray crystallography to spectroscopic analysis of volcano plumes. Our sensor chambers provide extreme reliability for use in remote locations or OEM applications.



Aurora CMOS

The Aurora series of cooled CMOS cameras supports Sony high sensitivity, low noise IMX back-illuminated sensors from 9 megapixels to 151 megapixels, including the IMX411, IMX461, IMX455, IMX571, and IMX533. Aurora's extreme reliability makes it ideal for remote installations. Air cooling is standard but all Auroras are plumbed for liquid circulation.



Revelation CMOS

Revelation cameras share Aurora's electronics and sensors, but in a form factor optimized for limited space front-to-back. Optional configurations include air cooling, liquid circulation, and mounting to the customer's housing as a heatsink (less than 55mm front to back). Revelation is the ideal evolution of our popular Hyperion life science OEM CCD camera.



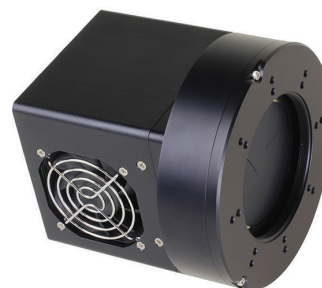
Kepler CMOS

The Kepler series supports GPixel GSense large format sCMOS front and back-illuminated sensors. Larger pixels provide high sensitivity and low noise at high throughput. User-replaceable shutter, fans, and digital board make Kepler ideal for remote installations. Air cooling is standard but all Keplers are plumbed for liquid circulation.



ProLine CCD

ProLine cameras provide two power and two USB connections for FLI accessories. Camera and filter wheel can be controlled with a single power and USB cable from your PC. High and low data rates are optimized using independent analog to digital converters. Both the inner and outer chambers are sealed for harsh environments. Supported sensors: CCD230-42 and CCD42-40.



MicroLine CCD

Despite being smaller and lighter than ProLine cameras, standard MicroLines cool within a few degrees of their larger sibling. With the optional copper heatsink, MicroLine cooling meets or exceeds ProLine cooling. Smaller sensors have a shorter back focal distance than ProLine cameras. MicroLines support dual and quad channel readout with some sensors. Supported sensors: CCD230-42, CCD42-40, CCD47-120, CCD47-20.



MADE IN USA

Finger Lakes Instrumentation
<https://www.flicamera.com>
USA 585-624-3760