



FACADE PANELS

ESKIN<sub>By</sub> **ES**  
METALS



## THE LATEST PRODUCT INTRODUCED TO THE MARKET BY ES, IS A VENTILATED CLADDING SYSTEM WITH THE LATEST TECHNOLOGY.

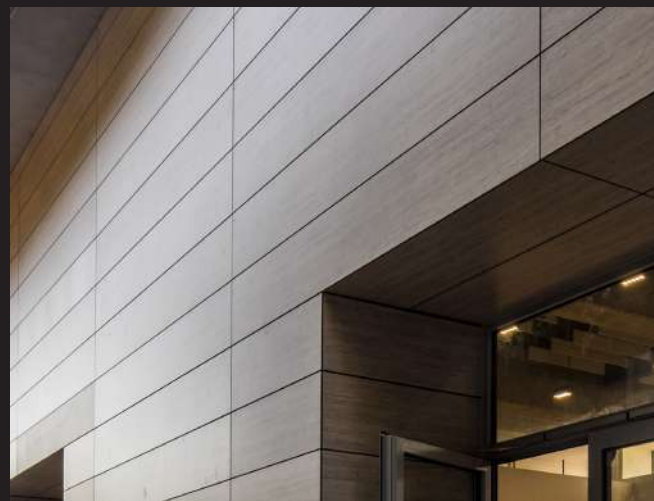
- The cladding system is versatile, able to be installed on the exterior skin of your Project as a wall or ceiling application.
- Requires no maintenance and performs with a long-life expectancy, delivering an aesthetic and cost-effective solution.
- Enhance the performance of your project and beautify the exterior facade, making it architecturally stunning.
- High impact resistance, scratch resistance and durability make our products Eco-friendly and sustainable.
- A wide variety of finishes, such as wood grains, metallics and natural finishes. Thanks to the advanced technology, the color appearance will have minimum differences over the years without much maintenance.
- Fast and efficient installation makes it an attractive solution for residential and commercial projects.



## FACADE GRILLES

Facade grilles are commonly used for sun protection, ventilation or as an aesthetic element. When installed separately from the building's structure, it also contributes with the thermal insulation of the building without damaging the visual aesthetics of it.

Thanks to its stability and versatility, E|SKIN By ESMetals can be cut into linear modules and installed in all types of structures to form screen facades, providing excellent appearance. This thermo stable architectural panel comes in a wide range of colors and designs, a variety of sizes and thicknesses, ensuring excellent appearance for a long period of time. It is ideal for façades that require efficient indoor temperature control, acoustics management, energy saving and easy maintenance.



## MAIN FEATURES



### ENVIRONMENTALLY FRIENDLY

Composed by 70% of renewable sources.



### UV RESISTANT

Protection against U.V. discoloration, assuring color stability over time.



### ANTI GRAFFITI\*

Allowing paint removal.



### ANTI- INSECTS

It does not suffer any kind of insect attack. Inert material preventing fungal growth.



### THERMAL

It acts independently as thermal insulation.



### IMPACT RESISTANT

Due to its high impact resistance, it can be exposed to high traffic areas, such as sports areas.



### HIGH CLEANABILITY

The top or bottom edges can be angle-milled, allowing water to flow towards the back.



### ACOUSTIC

It acts independently as acoustic insulation.



### FLOATING SYSTEM

Floating point fixing, allowing greater movement of the panels.



### MULTIFORMAT

Multiple sizes and thicknesses for easy modulation and installation.



### FIRE RESISTANCE

Complying with NFPA 285 standard.



### CARBON NEUTRAL

E|SKIN is produced under a system that measures, controls and balances emissions. We compensate our footprint and favor the environment.



### SELF-SUPPORTING

Even with large perforated areas in their design.



### WARRANTY

10-year warranty for all references.

#### SIZES

4x8 ft  
(1,22 x 2,44 m)

4x10 ft      5x12 ft  
(1,22 x 3,06 m)   (1,53 x 3,66 m)

#### THICKNESSES

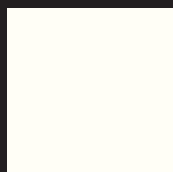
0,16" / 0,24" / 0,31" / 0,39" / 0,47"

4 / 6 / 8 / 10 / 12

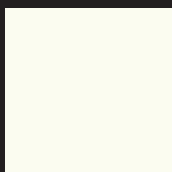
\* Check our technical datasheet for more info.



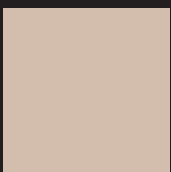
## SOLIDS



• Vanilla 2109



• Polar White 2111



• Latte 2167



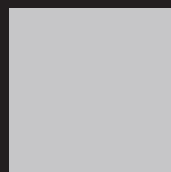
• Taupe 2165



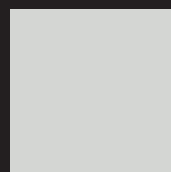
○ Shadow 2259



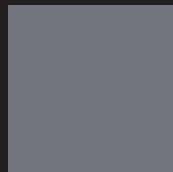
• Fog 2108



• Alumina 2103



• Cloud 2191



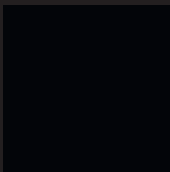
• Dark Steel 2315



• Graphite K 2192



○ Graphite 2174



• Cinder 2110



• Fossil 2297



○ Brick 2268



○ Terra 2225



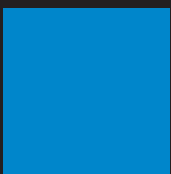
• Prism Blue 0888



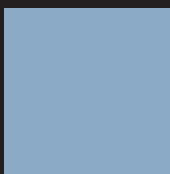
○ Pacific Blue 2170



○ Mediterranean 2180



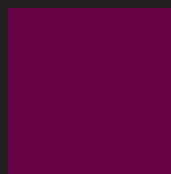
○ Caribbean 2182



○ Sky 2320



○ Magnolia 2299



○ Berenjena 2243



○ Prism Red 2135



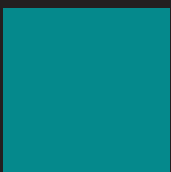
• Burgundy 2158



○ Teal 2321



○ Petroleo 2237



• Turquesa 2176



○ Bleen 2224



○ Forest 2252



○ Herbal 2274



○ Summer 2305

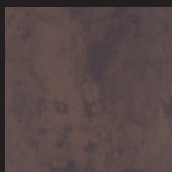


○ Mustard 2298

## OXIDES, CONCRETES & GRANITES



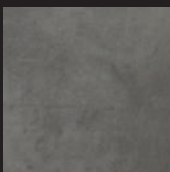
• Heavy Metal 3152



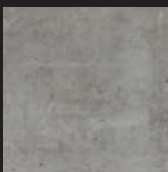
• Terra Steel 3116



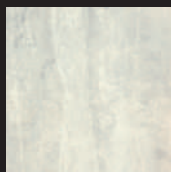
○ Mineral Steel 3166



• Grey Slate 3156



• Industrial Concrete 3127



○ Urban Concrete 3124



# WOODGRAINS



## METALLIZED & PEARLESCENTS

The color of the laminate varies according to the pattern and design used. Please ask for a real sample before you make a decision.



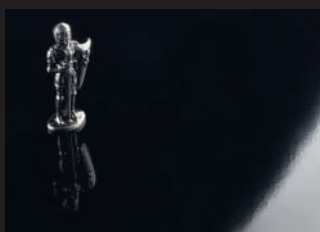
## SIZES

○ Color/Pattern available in:  
4 x 8 ft (1,22 x 2,44 m)  
4 x 10 ft (1,22 x 3,06 m)

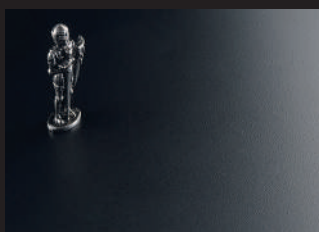
● Color / Pattern available in:  
4 x 8 ft (1,22 x 2,44 m)  
4 x 10 ft (1,22 x 3,06 m)  
5x12 ft (1,53 x 3,66 m)

☒ Color/Pattern available in:  
4 x 8 ft (1,22 x 2,44 m)  
4 x 10 ft (1,22 x 3,06 m)  
4,9 x 12 ft (1,52 x 3,66 m)

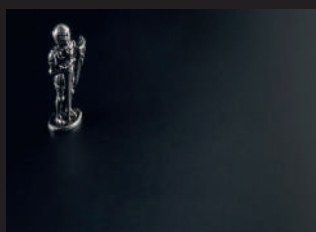
## FINISHES



GLOSS

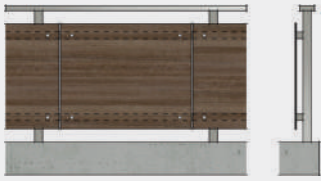


MATE

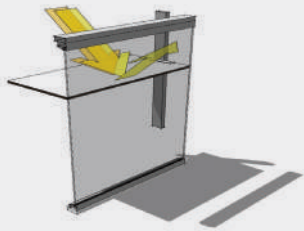


SUPER MATE

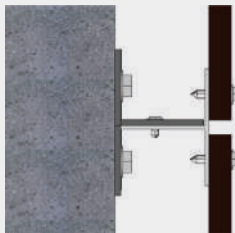
The finishes offered result from a high technology combination between inks and UV filters, which guarantee a highly stable appearance for many years.



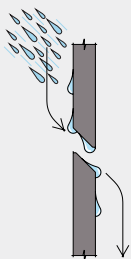
**A** RAILS AND CLOSURES



**B** LIGHT CONTROL



**C** VENTILATED CLADDING



**D** HIGH CLEANABILITY

## APPLICATIONS

### **A** RAILS AND CLOSURES

E|SKIN is ideal for solid enclosures and balconies. The panels can be installed on any type of grid or special accessories designed for that purpose. They can be installed through any of the cleats, always following technical recommendations. For this application we recommend using panels of thickness greater than or equal to 10 mm.

### **B** LIGHT CONTROL

E|SKIN is an opaque material that blocks and redirects light through reflection to control indoor's luminance and amount of energy that enters through windows or skylights. These properties keep a pleasant environment with stable temperatures and reduce energy consumption of mechanical conditioning systems.

### **C** VENTILATED CLADDING

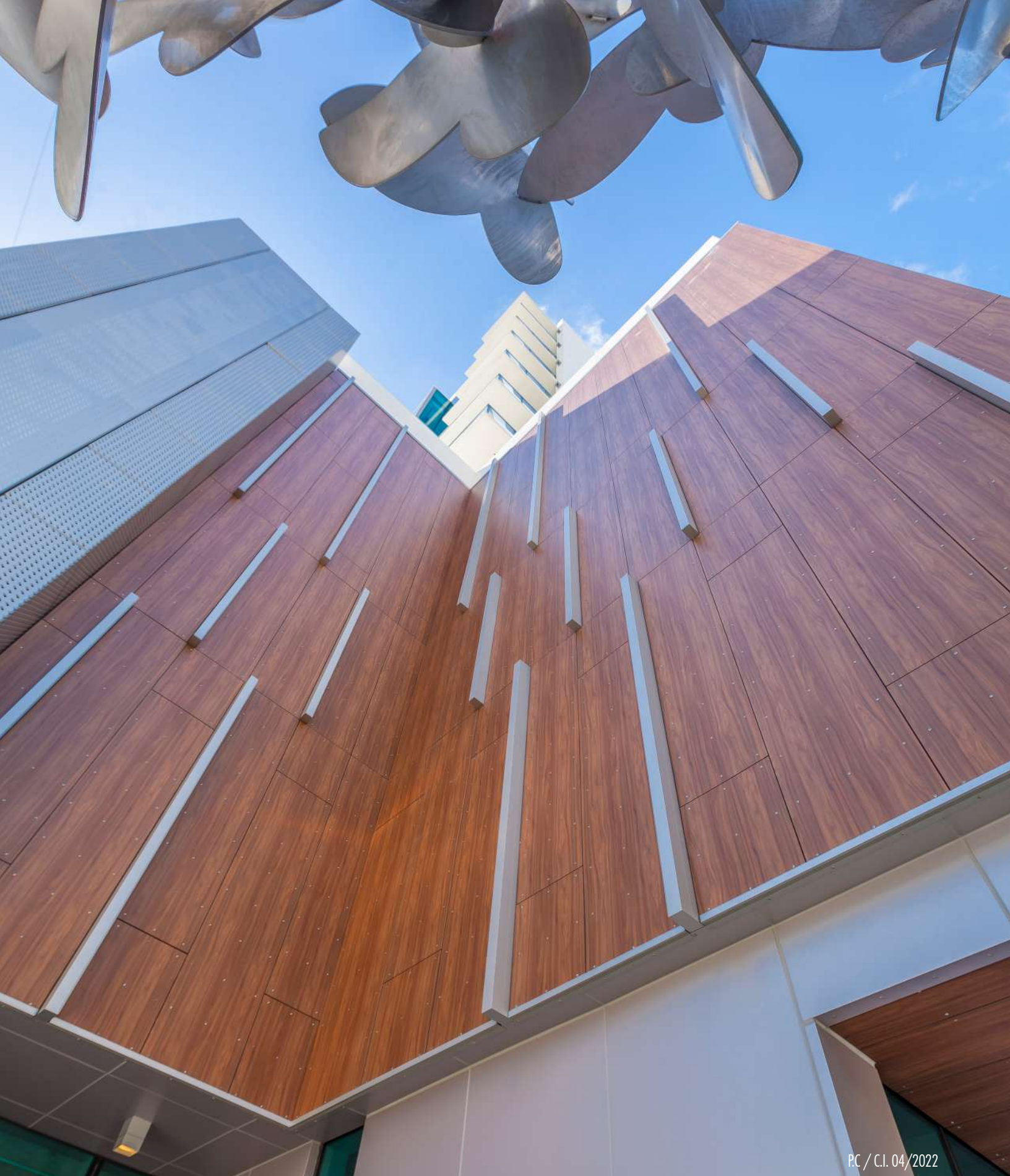
E|SKIN panel composition and modulation is ideal for installation of ventilated facades, in which insulation or thermal regulations compliance is required. It acts as a floating skin of the building, creating a posterior chamber which can be installed.

### **D** HIGH CLEANABILITY

The top or bottom edges can be angle-milled, allowing water to flow towards the back.







PC / C.I. 04/2022

TECNOGLASS



es-metals.com  
✉ info@es-metals.com