

# Revelation CMOS Camera

## RV455

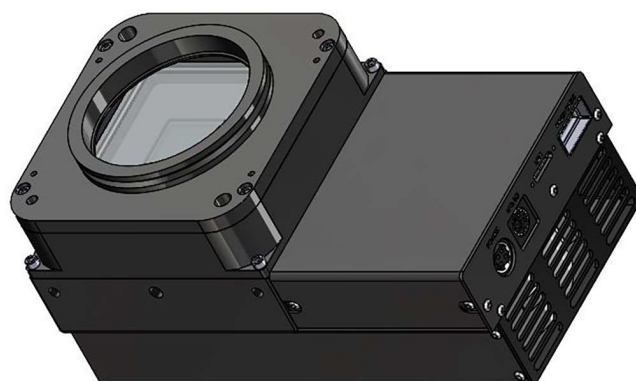
### 61.2 Megapixels at Up to 4 fps

Designed and manufactured in the USA with the same extreme reliability as the thousands of FLI OEM cameras. Install in remote observatories around the world with complete confidence in a long, trouble-free life. Full frame sensor with 90% quantum efficiency and massive 43.1mm diagonal field of view to increase throughput.

#### Technical Data

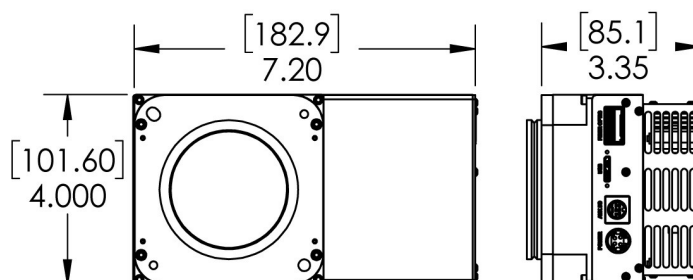
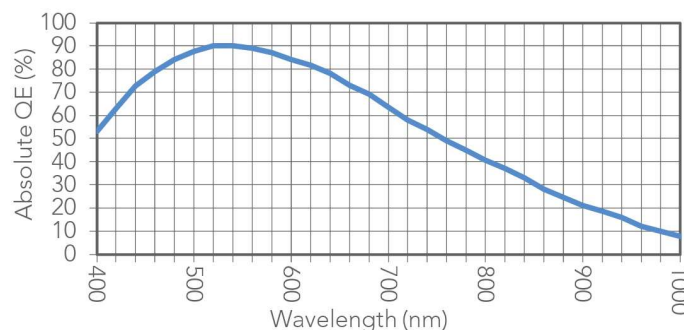
<b>Sensor Type</b>	Back Illuminated CMOS
<b>Sensor</b>	Sony IMX455
<b>Shutter Type</b>	Rolling; Rolling with Global Reset
<b>Active Pixels</b>	9568 x 6380
<b>Pixel Size (microns)</b>	3.76 x 3.76 $\mu\text{m}$
<b>Imaging Area (Diagonal)</b>	36 X 24 mm (43.2 mm)
<b>Full Well Capacity (e-)</b>	50000 electrons
<b>Typical Readout Noise</b>	1 e- (rolling)
<b>Dynamic Range</b>	93.6 dB
<b>Frame Rate (fps)</b>	4 fps
<b>Cooling Method<sup>1</sup></b>	Air or optional Liquid
<b>Max. Cooling (Air)</b>	50°C below ambient
<b>Temperature Stability</b>	0.1°C
<b>Dark Current (typical)</b>	0.002 eps at -20C
<b>Interface</b>	USB 3.0
<b>Data Bit Depth</b>	12 / 16 bit
<b>Optional Shutter</b>	None
<b>Optional Mounts</b>	Nikon F-Mount
<b>Subarray Readout</b>	Yes
<b>External Trigger In/Out</b>	Yes
<b>SDK / Software</b>	Kepler / FLI Pilot
<b>Weight</b>	2 lbs (.9 kg)

<sup>1</sup>Cameras are plumbed for liquid circulation; External liquid circulation connectors sold separately.



Revelation with FLI Dovetail Flange

#### Absolute Quantum Efficiency



See [FLIcamera.com](http://FLIcamera.com) for alternate configurations



Finger Lakes Instrumentation  
[FLIcamera.com](http://FLIcamera.com)  
USA 585-624-3760