

Revelation CMOS Camera

RV411

PRELIMINARY

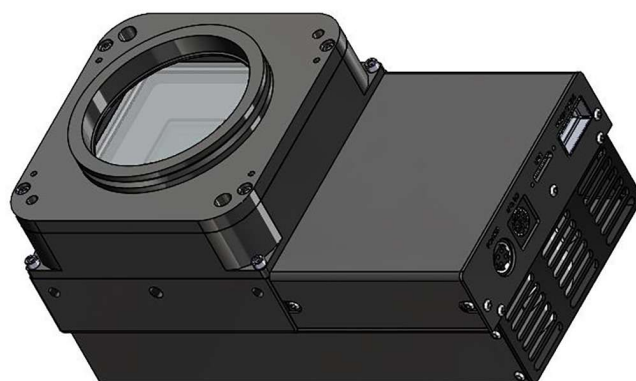
151 Megapixels with 2 fps at 16 bits

Designed and manufactured in the USA with the same extreme reliability as the thousands of FLI OEM cameras. Install in remote observatories around the world with complete confidence in a long, trouble-free life. Large format sensor with 90% quantum efficiency and massive 66.7mm diagonal field of view to increase throughput.

Technical Data

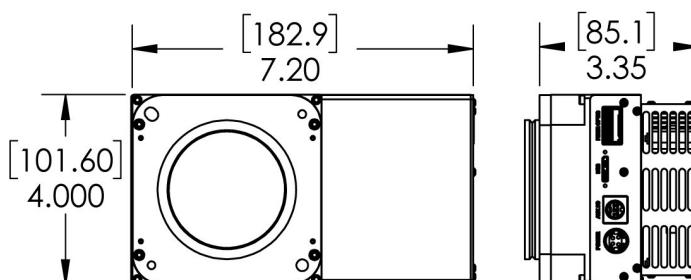
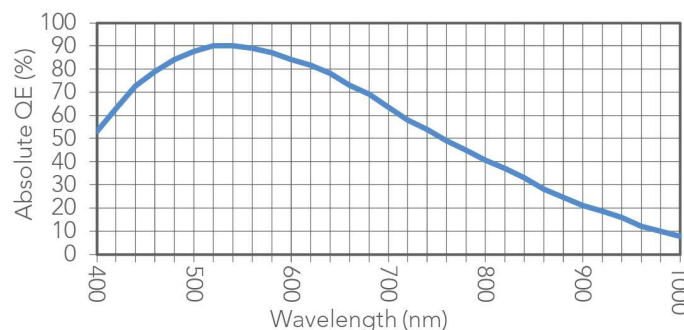
Sensor Type	Back Illuminated CMOS
Sensor	Sony IMX411
Shutter Type	Rolling
Active Pixels	14192 x 10640
Pixel Size (microns)	3.76 x 3.76 μm
Imaging Area (Diagonal)	53.4 X 40 mm (66.7 mm)
Full Well Capacity (e-)	50000 electrons
Typical Readout Noise	1 e- (rolling)
Dynamic Range	93.6 dB
Frame Rate (fps)	2 fps (16 bit)
Cooling Method ¹	Air or optional Liquid
Max. Cooling (Air)	50°C below ambient
Temperature Stability	0.1°C
Dark Current (typical)	0.002 eps at -20C
Interface	USB 3.0
Data Bit Depth	12 / 16 bit
Optional Shutter	None
Optional Mounts	Nikon F-Mount
Subarray Readout	Yes
External Trigger In/Out	Yes
SDK / Software	LIBFLI / FLIGrab
Weight	2 lbs (.9 kg)

¹Cameras are plumbed for liquid circulation; External liquid circulation connectors sold separately.



Revelation with FLI Dovetail Flange

Absolute Quantum Efficiency



See FLIcamera.com for alternate configurations



Finger Lakes Instrumentation
FLIcamera.com
USA 585-624-3760