



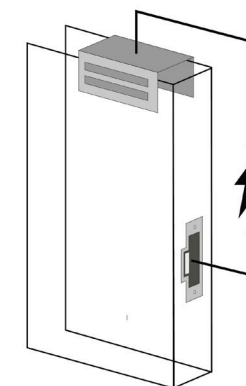
R SERIES

LATCH



R SERIES

The Latch R combines a reader, door controller, and management system into one simple product that directly connects to motion detectors and requests to exit devices, lobby doors, parking gates, elevators, and office turnstiles. But it doesn't stop there — you can also use Wiegand, Ethernet, or Wifi to connect the Latch R to a larger system anywhere you need it.



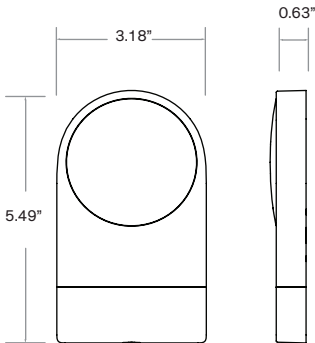
Designed for:

- Building entrances
- Common areas
- Elevators
- Garage gates

R SERIES



DIMENSIONS.



FINISHES



Black

Other standard and custom finishes are available upon request depending on order volume and project timing.

FEATURES

Credentials Types	Smartphone, NFC Card, Doorcode
Users	1500
Camera	172° image capture
Configuration	With existing access panels or standalone
Tamper Alert	Yes
Cloud Management	Yes

COMMUNICATION

Wireless Standards	Near Field Communication (NFC), Bluetooth Low Energy (BLE)
Wired Standards	Ethernet, Serial, Wiegand (input-only)
NFC Frequency	13.56 MHz
NFC Read Range	Up to 0.75"
NFC Type	MiFare Classic
Supported Smartphones	iOS and Android (see website for full list)
Credential Verification Time	0.5-2 seconds depending on credential type
Visual communications	7 white LEDs
Interface	Touchpad, web and mobile apps

INPUTS, OUTPUTS AND POWER

Power Type	Class 2 Isolated, UL Listed DC Power Supply
Supply Voltage	12VDC to 24VDC
Lock Relay	Configurable normally open/normally closed relay
Inputs and Outputs	3 configurable inputs/outputs
Termination	Pigtail + RJ45 for ethernet

ENVIRONMENTAL

Operating Temperature	Operating -30°C to 70°C
Operating Humidity	95%, non-condensing
Enviromental	IP65

CERTIFICATIONS & WARRANTY

Warranty	1-year limited warranty
Compliance	FCC Part 15, IC RSS

MECHANICAL SPECIFICATIONS.

Mounting	Flush mount or wallbox mount
----------	------------------------------

LATCH[®]

WWW.LATCH.COM