



ctm-marine.com

PRODUCT PRICE LIST 2025

€ - EUR

EFFECTIVE MAY 1ST, 2025



#SWITCHTOQUALITY

COPYRIGHT © 2025 CTM-MARINE LLC - ALL RIGHTS RESERVED



MARINE SOLUTIONS FOR EVERY BOAT

Welcome.

At CTM Marine, our passion for the sea and the various ways to navigate it is unwavering. Be it on a traditional sailboat or a modern motor yacht, we're equally devoted to enhancing your journey, making it memorable and more enjoyable.

With over a decade of experience in providing marine-related products to the boating community, we've gained profound insights into boaters' preferences and identified opportunities for product enhancements. Leveraging our expertise, we've crafted the reliable and cost-effective CTM Marine essential items for today's boater.

With a deep-seated appreciation for water, boating, and exploration, our mission is to ensure you're equipped with all the essential items needed for a memorable voyage.

See you on the water!

NOTES

This image shows a single sheet of white paper with horizontal blue ruling lines. The lines are evenly spaced and run across the width of the page. There are no margins, text, or other markings on the paper.



CONTENTS

PAGE

WELCOME	1
NOTES	2
CONTENTS	3 - 4
MARINE A/C PRODUCTS INTRO	5
1- SELF-CONTAINED A/C UNITS - CT	6 - 13
SELF - CONTAINED UNIT FEATURES	6
SELF - CONTAINED UNIT PRICE LIST	7
SELF - CONTAINED UNIT PARTS DIAGRAM	8
SELF - CONTAINED UNIT PARTS PRICE LIST	9 - 12
SELF - CONTAINED UNIT INSTALLATION DIAGRAM	13
2- NMEA2000 SELF-CONTAINED A/C UNITS	14 - 15
NMEA2000 UNIT FEATURES	14
NMEA2000 UNIT PRICE LIST	15
3- SPLIT-SYSTEM A/C UNITS - CX	16 - 21
SPLIT - SYSTEM UNIT FEATURES	16
SPLIT - SYSTEM UNIT PRICE LIST	17
SPLIT - SYSTEM UNIT PARTS DIAGRAM	18
SPLIT - SYSTEM UNIT PARTS PRICE LIST	19 - 21

4- NMEA2000 SPLIT SYSTEM A/C UNITS	22 - 23
NMEA2000 UNIT FEATURES	22
NMEA2000 UNIT PRICE LIST	23
5- EVAPORATOR UNITS - EV.....	24 - 29
EVAPORATOR UNIT FEATURES	24
EVAPORATOR UNIT PRICE LIST	25
EVAPORATOR PARTS DIAGRAM	26
EVAPORATOR PARTS PRICE LIST	27 - 29
EV - CX INSTALLATION DIAGRAM	29
6- CHILLED WATER SYSTEMS - CW	30 - 37
CHILLED WATER SYSTEM FEATURES	30
CHILLED WATER SYSTEM PRICE LIST	31
CHILLED WATER SYSTEM PARTS DIAGRAM	32
CHILLED WATER SYSTEM PARTS PRICE LIST	33 - 36
CHILLED WATER SYSTEM INSTALLATION DIAGRAM	37
7- AIR HANDLER UNITS - AH	38 - 43
AIR HANDLER UNIT FEATURES	38
AIR HANDLER UNIT PRICE LIST	39
AIR HANDLER PARTS DIAGRAM	40
AIR HANDLER PARTS PRICE LIST	41 - 43
8- NMEA2000 AIR HANDLER UNITS	44 - 45
NMEA2000 UNIT FEATURES	44
NMEA2000 UNIT PRICE LIST	45
9- CONTROLS & ACCESSORIES	46 - 52
CONTROLS & ACCESSORIES FEATURES	46
CONTROLS & ACCESSORIES PRICE LIST	47 - 52
RETROFIT KITS	52
10- MARINE PUMPS	53 - 55
MARINE PUMPS FEATURES	53
MARINE PUMPS & PARTS PRICE LIST	54
PUMP INSTALLATION DIAGRAMS	55
3D MODELS	56 - 57
NMEA 2000 NETWORK FOR MARINE A/C UNITS	58
UPCOMING PRODUCTS	59 - 60
PART NUMBER EXPLANATION	61
BECOME A CTM MARINE DEALER	62
FIND AUTHORIZED DEALERS & DISTRIBUTORS	63
NOTES	64

Prices are subject to change without notice and not guaranteed until an order is accepted by CTM Marine and/or its affiliates. Accepted order prices are final. Prices exclude taxes, duties, or charges by any authority, which are the buyer's responsibility unless an exemption certificate is provided.



ctm-marine.com

ESSENTIAL ITEMS FOR THE MODERN SAILOR



SMXIR



PASSPORT I/O



SMART TOUCH



ELITE II



**EASY COOL 3.0
NMEA 2000**



ctm-marine.com

1 - SELF-CONTAINED A/C UNITS

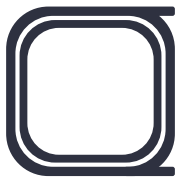
The CTM Marine CT series are self-contained, direct-expansion, seawater cooled, reverse cycle air conditioners designed for marine applications.



3D MODEL

CT

Turbo Units With Titanium Coils



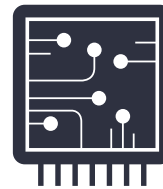
**TITANIUM
COIL**



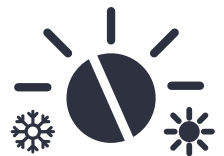
QUIET



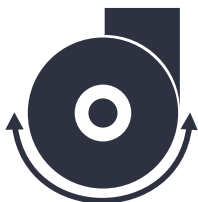
**COMPACT
DESIGN**



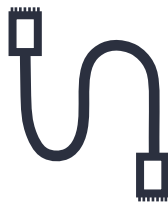
**UNIVERSAL
BOARD**



COOL / HEAT



**HIGH VELOCITY
ROTATABLE
TURBO FAN**



**CONTROL
CABLE
INCLUDED**



**GMCC
COMPRESSOR**



**RUST FREE
PROTECTION
COAT**



**ABS
COMPOSITE
PAN**

MODEL	CAPACITY (BTU)	VOLTAGE	CYCLE	PART NUMBER	MAP*
CT-6	6,000	115V	50 / 60 Hz	21101C	€1,805.00
CT-6H	6,000	230V	50 / 60 Hz	21201C	€1,865.00
CT-6S	6,000	115V	50 / 60 Hz	21401C	€1,995.00
CT-6HS	6,000	230V	50 / 60 Hz	21501C	€2,089.00
CT-6DC	6,000	12V / 115V	50 / 60 Hz	21601C	€3,325.00
CT-6DC24	6,000	24V / 115V	50 / 60 Hz	21701C	€3,325.00
CT-10	10,000	115V	50 / 60 Hz	22101C	€2,049.00
CT-10H	10,000	230V	50 / 60 Hz	22201C	€2,110.00
CT-10S	10,000	115V	50 / 60 Hz	22401C	€2,235.00
CT-10HS	10,000	230V	50 / 60 Hz	22501C	€2,299.00
CT-10DC	10,000	115V	50 / 60 Hz	22601C	€4,275.00
CT-12	12,000	115V	50 / 60 Hz	23101C	€2,169.00
CT-12H	12,000	230V	50 / 60 Hz	23201C	€2,239.00
CT-16	16,000	115V	50 / 60 Hz	24101C	€2,289.00
CT-16H	16,000	230V	50 / 60 Hz	24201C	€2,359.00
CT-16S	16,000	115V	50 / 60 Hz	24401C	€2,479.00
CT-16HS	16,000	230V	50 / 60 Hz	24501C	€2,650.00
CT-25H	25,000	230V	50 / 60 Hz	25201C	€3,609.00

H = 230V Unit S = W/ Soft Start DC = 12/24V Unit

**CHECK IF CTM IS COMPATIBLE
WITH YOUR CURRENT SYSTEM.**

SCAN ME



SMART TECHNOLOGY TO MANAGE COMPRESSOR STARTUP.

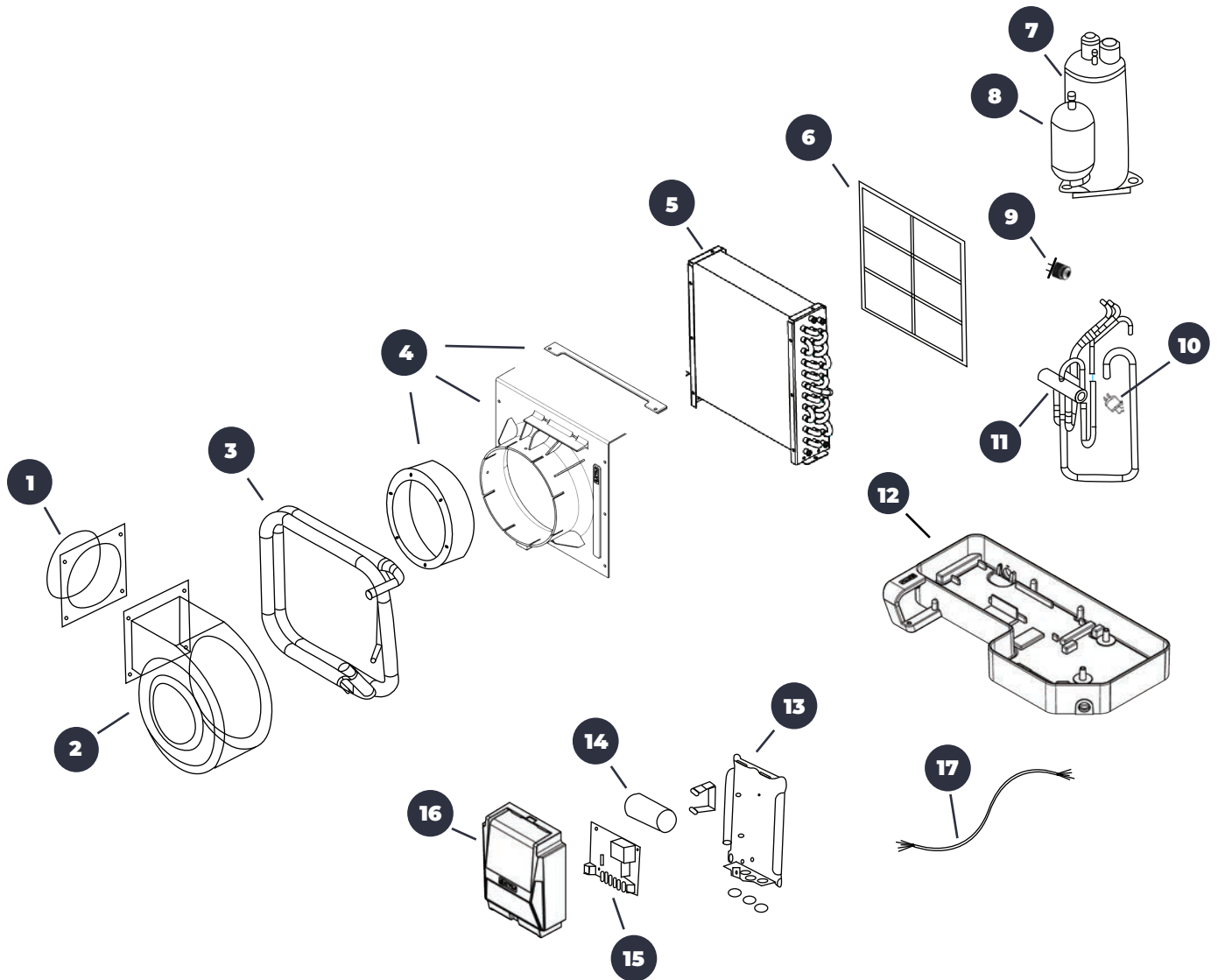
CTM Marine air conditioners are compatible with Micro-air EasyStart soft starters. Reduce starting amps up to 75% and have peace of mind with continuous runtime diagnostics monitoring for stalls, overcurrent, miswirings, short-cycles, and more.



***MAP = Minimum Advertise Price (Units cannot be ADVERTISED at a lower price).
Failure to follow MAP Policy will result in the suspension of the account**

PARTS DIAGRAM

CT - SELF CONTAINED A/C UNITS



- 1. Mounting / Duct Ring
- 2. Blower / Fan
- 3. Condensing Coil
- 4. Plate & Ring For Blower
- 5. Evaporator Coil
- 6. Air Filter
- 7. Compressor
- 8. Dryer
- 9. Solenoid

- 10. High Pressure Switch
- 11. Reversing Valve
- 12. ABS Drain Pan
- 13. Electrical Box Back Plate
- 14. Capacitor
- 15. Control Board
- 16. Electrical Box Front Cover
- 17. Electrical Harness

1 - CT - SELF CONTAINED

1 - MOUNTING / DUCT RING

PART NUMBER	CAPACITY (BTU)	SIZE	PRICE (USD)
40001M	6,000 BTU'S	4"	€20.99
40002M	10,000 - 12,000 BTU'S	5"	€25.99
40003M	16,000 BTU'S	6"	€38.99
40004M	25,000 BTU'S	7"	€29.99

2 - BLOWER / FAN

PART NUMBER	CAPACITY (BTU)	VOLTAGE	PRICE (USD)
40011B	6,000 BTU'S	115V	€280.99
40021B	6,000 BTU'S	230V	€280.99
40013B	10,000 - 12,000 BTU'S	115V	€300.99
40023B	10,000 - 12,000 BTU'S	230V	€300.99
40014B	14,000 - 16,000 BTU'S	115V	€329.99
40024B	14,000 - 16,000 BTU'S	230V	€329.99
40025B	25,000 BTU'S	230V	€435.99

3 - CONDENSING COIL

PART NUMBER	CAPACITY (BTU)	VOLTAGE	PRICE (USD)
40011Q	6,000 BTU'S	ALL	€725.99
40012Q	10,000 - 12,000 BTU'S	ALL	€725.99
40013Q	16,000 BTU'S	ALL	€725.99
40014Q	25,000 BTU'S	ALL	€1,540.99

4 - PLATE & RING FOR BLOWER

PART NUMBER	CAPACITY (BTU)	VOLTAGE	PRICE (USD)
40011R	6,000 BTU'S	ALL	€19.99
40012R	10,000 - 12,000 BTU'S	ALL	€25.99
40013R	16,000 BTU'S	ALL	€29.99
40014R	25,000 BTU'S	ALL	€30.99

1 - CT - SELF CONTAINED

5 - EVAPORATOR COIL

PART NUMBER	ITEM DESCRIPTION	PRICE (USD)
40011E	6,000 BTU'S	€365.99
40012E	10,000 - 12,000 BTU'S	€455.99
40013E	16,000 BTU'S	€545.99
40014E	25,000 BTU'S	€639.99

6 - AIR FILTER

PART NUMBER	ITEM DESCRIPTION	PRICE (USD)
40011F	6,000 BTU'S	€25.99
40012F	10,000 - 12,000 BTU'S	€29.99
40013F	16,000 BTU'S	€30.99
40014F	25,000 BTU'S	€35.99

7 - COMPRESSOR

PART NUMBER	CAPACITY (BTU)	VOLTAGE	PRICE (USD)
40110K	6,000 BTU'S	115V	€345.99
40210K	6,000 BTU'S	230V	€455.99
40111K	10,000 - 12,000 BTU'S	115V	€379.99
40211K	10,000 - 12,000 BTU'S	230V	€399.99
40112K	16,000 BTU'S	115V	€435.99
40212K	16,000 BTU'S	230V	€455.99
40213K	25,000 BTU'S	230V	€905.99

8 - DRYER

PART NUMBER	ITEM DESCRIPTION	PRICE (USD)
40010Y	6,000 BTU'S	€29.99
40011Y	10,000 - 12,000 BTU'S	€35.99
40012Y	16,000 BTU'S	€40.99
40013Y	25,000 BTU'S	€45.99

1 - CT - SELF CONTAINED

9 - SOLENOID

PART NUMBER	CAPACITY (BTU)	VOLTAGE	PRICE (USD)
40118V	ALL	115V	€29.99
40219V	ALL	230V	€29.99

10 - HIGH PRESSURE SWITCH

PART NUMBER	CAPACITY (BTU)	PRESSURE RATING	PRICE (USD)
40010H	ALL	450 - 575 PSI	€45.99

11 - REVERSING VALVE

PART NUMBER	ITEM DESCRIPTION	PRICE (USD)
40011V	6,000 BTU'S	€55.99
40012V	10,000 - 12,000 BTU'S	€60.99
40013V	14,000 - 16,000 BTU'S	€65.99
40014V	25,000 BTU'S	€75.99

12 - ABS DRAIN PAN

PART NUMBER	ITEM DESCRIPTION	PRICE (USD)
40011D	6,000 BTU'S	€86.99
40012D	10,000 - 12,000 - 16,000 BTU'S	€95.99
40013D	16,000 BTU'S - 454B GAS ONLY	€115.99
40014D	25,000 BTU'S	€120.99

13 - ELECTRICAL BOX BACK PLATE

PART NUMBER	ITEM DESCRIPTION	PRICE (USD)
40005J	ALL BTU'S	€69.99

1 - CT - SELF CONTAINED

14 - CAPACITOR

PART NUMBER	ITEM DESCRIPTION	PRICE (USD)
40101U	6,000 BTU'S - 115V / 40+6uF / 250VAC	€20.99
40201U	6,000 BTU'S - 230V / 15 + 2uF / 440VAC	€20.99
40102U	10,000 BTU'S - 115V / 45 + 10uF / 250VAC	€25.99
40202U	10,000 - 12,000 BTU'S - 230V / 25 + 3uF / 440VAC	€25.99
40103U	12,000 BTU'S - 115V / 55 + 10uF / 250VAC	€30.99
40104U	12,000 BTU'S - 115V / 70 + 10 uF / 250VAC	€30.99
40105U	16,000 BTU'S - 115V / 55 + 16 uF / 250VAC	€39.99
40106U	16,000 BTU'S - 115V / 70 + 16 uF / 250VAC	€39.99
40203U	16,000 BTU'S - 230V / 35 + 5 uF / 450VAC	€39.99
40204U	25,000 BTU'S - 230V / 50+ 8 uF / 450VAC	€45.99

15 - CONTROL BOARD

PART NUMBER	ITEM DESCRIPTION	PRICE (USD)
40002C	U-BOARD VERSION 2.0	€355.99
40003C	U-BOARD WITH SOFT START INTEGRATED	€415.99
40004C	U-BOARD WITH NMEA2000	€369.99

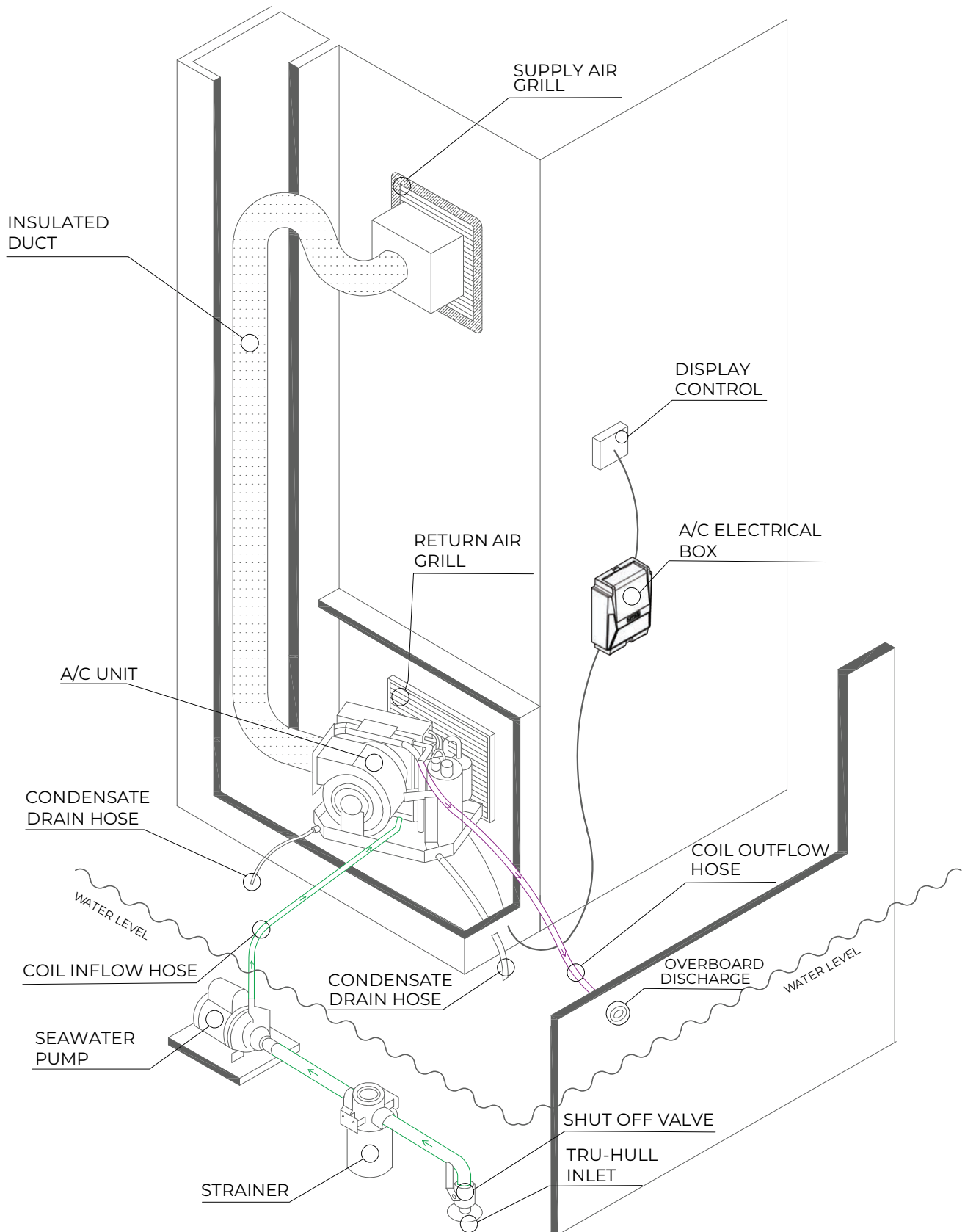
16 - ELECTRICAL BOX FRONT COVER

PART NUMBER	ITEM DESCRIPTION	PRICE (USD)
40004J	ALL BTU'S	€69.99

17 - ELECTRICAL HARNESS

PART NUMBER	ITEM DESCRIPTION	PRICE (USD)
40001L	ALL BTU'S	€79.99

SELF CONTAINED INSTALLATION DIAGRAM



Self-Contained units must be installed within the cabin area to ensure they recirculate the same air from the cabin.
They cannot be installed in the engine room.

2 - NMEA 2000 SELF-CONTAINED A/C UNITS



We are excited to announce the launch of our NMEA 2000 compatible unit, a significant milestone in enhancing connectivity and integration across marine systems. With integration with **Garmin Empirbus** and **Onehelm**, **Raymarine yachtsense***, enabling complete NMEA 2000 embedded control from MFDs and other networked devices.

This will allow for seamless control of multiple HVAC units without the need for additional displays, fully utilizing the vessel's existing MFD, and digital switching, control systems.

Our new CTM Easycool 3.5 in Touchscreen Display will feature Bluetooth and Wi-Fi connectivity, allowing users to remotely monitor and control HVAC systems via our companion Apple or Android apps. Key features include control over operating modes, power, fan speed, operation adjustments, and real-time monitoring of inlet temperature and humidity, enhancing comfort and the user experience both onboard and remotely.

Refer to page 58 for NMEA 2000 Network Diagram

COMPATIBLE WITH:



GARMIN



SIMRAD



RAYMARINE

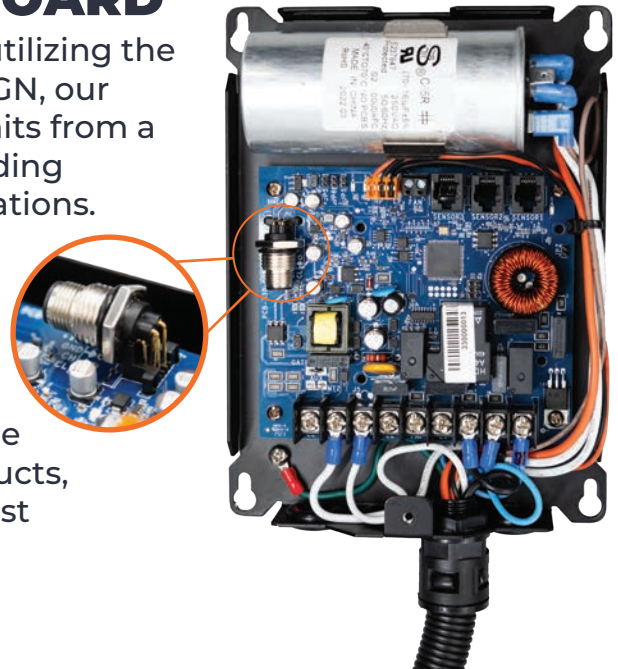
*All trademarks mentioned belong to their respective owners; use of these trademarks does not imply endorsement or affiliation.

MODEL	CAPACITY (BTU)	VOLTAGE	CYCLE	PART NUMBER	MAP*
CT-6N	6,000	115V	50 / 60 Hz	21132C	€2,495.00
CT-6HN	6,000	230V	50 / 60 Hz	21232C	€2,555.00
CT-6SN	6,000	115V	50 / 60 Hz	21432C	€2,685.00
CT-6HSN	6,000	230V	50 / 60 Hz	21532C	€2,779.00
CT-6DCN	6,000	12V / 115V	50 / 60 Hz	21632C	€4,015.00
CT-10N	10,000	115V	50 / 60 Hz	22132C	€2,739.00
CT-10HN	10,000	230V	50 / 60 Hz	22232C	€2,805.00
CT-10SN	10,000	115V	50 / 60 Hz	22432C	€2,929.00
CT-10HSN	10,000	230V	50 / 60 Hz	22532C	€2,989.00
CT-10DCN	10,000	12V / 115V	50 / 60 Hz	22632C	€4,965.00
CT-12N	12,000	115V	50 / 60 Hz	23132C	€2,859.00
CT-12HN	12,000	230V	50 / 60 Hz	23232C	€2,929.00
CT-16N	16,000	115V	50 / 60 Hz	24132C	€2,979.00
CT-16HN	16,000	230V	50 / 60 Hz	24232C	€3,049.00
CT-16SN	16,000	115V	50 / 60 Hz	24432C	€3,169.00
CT-16HSN	16,000	230V	50 / 60 Hz	24532C	€3,340.00
CT-25HN	25,000	230V	50 / 60 Hz	25232C	€4,299.00

H = 230V Unit S = W/ Soft Start DC = 12/24V Unit N = NMEA 2000

NMEA 2000 UNIVERSAL BOARD

As an approved NMEA manufacturer, and utilizing the new NMEA 2000 HVAC Control standard PGN, our system allows for the control of multiple units from a single display or MFD, syncing zones, providing real-time monitoring, and simplifying operations. Additionally, we will offer a retrofit kit to replace existing control boards and SMX displays used by other A/C systems over the last 20 years, bringing new technology and connectivity to already installed units. This advancement will significantly enhance the functionality and versatility of our products, ensuring customers have access to the latest technology and seamless integration.



***MAP = Minimum Advertise Price (Units cannot be ADVERTISED at a lower price).
Failure to follow MAP Policy will result in the suspension of the account**

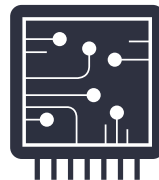
3 - SPLIT SYSTEM A/C UNITS

The CTM Marine Split-System air conditioner consists of two separate units; a condensing unit (CX), an evaporator unit (EV); and a refrigerant gas circulating through both.

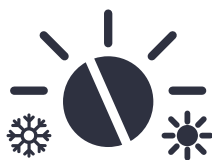

CX

Direct Expansion


3D MODEL

**COMPACT
DESIGN**

**UNIVERSAL
BOARD**

**RUST FREE
PROTECTION
COAT**

QUIET

COOL / HEAT

**TITANIUM
COIL**

**GMCC
COMPRESSOR**

MODEL	CAPACITY (BTU)	VOLTAGE	CYCLE	PART NUMBER	MAP*
CX - 10	10,000	115V	50 / 60 Hz	52101X	€2,200.00
CX - 10H	10,000	230V	50 / 60 Hz	52201X	€2,260.00
CX - 12	12,000	115V	50 / 60 Hz	53101X	€2,245.00
CX - 12H	12,000	230V	50 / 60 Hz	53201X	€2,295.00
CX - 16	16,000	115V	50 / 60 Hz	54101X	€2,355.00
CX - 16S	16,000	115V	50 / 60 Hz	54401X	€2,545.00
CX - 16H	16,000	230V	50 / 60 Hz	54201X	€2,399.00
CX - 16HS	16,000	230V	50 / 60 Hz	54501X	€2,649.00
CX - 24H	24,000	230V	50 / 60 Hz	55201X	€3,729.00
CX - 24HS	24,000	230V	50 / 60 Hz	55501X	€4,015.00
CX - 36H	36,000	230V	50 / 60 Hz	56201X	€4,205.00
CX - 36HS	36,000	230V	50 / 60 Hz	56501X	€4,395.00
CX - 48HS	48,000	230V	50 / 60 Hz	57201X	€5,249.00

H = 230V Unit S = W/ Soft Start

**CHECK IF CTM IS COMPATIBLE
WITH YOUR CURRENT SYSTEM.**

SCAN ME



SMART TECHNOLOGY TO MANAGE COMPRESSOR STARTUP.

CTM Marine air conditioners are compatible with Micro-air EasyStart soft starters. Reduce starting amps up to 75% and have peace of mind with continuous runtime diagnostics monitoring for stalls, overcurrent, miswirings, short-cycles, and more.

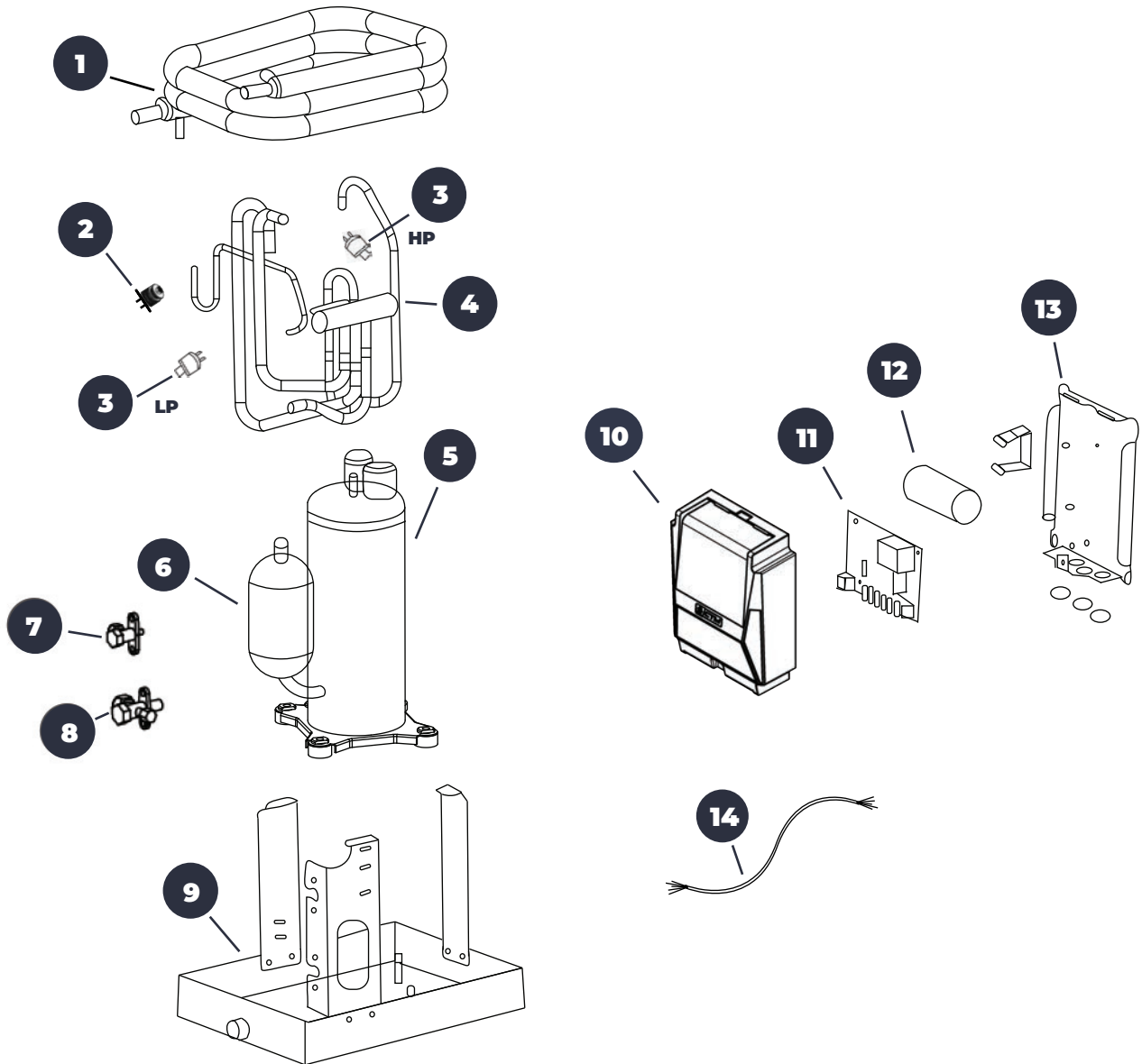


***MAP = Minimum Advertise Price (Units cannot be ADVERTISED at a lower price).**

Failure to follow MAP Policy will result in the suspension of the account

PARTS DIAGRAM

CX - SPLIT SYSTEM A/C UNITS



1. Condensing Coil
2. Solenoid
3. High & Low Pressure Switch
4. Reversing Valve
5. Compressor
6. Dryer
7. Discharge Valve

8. Suction Valve
9. Drain Pan
10. Electrical Box Front Cover
11. Control Board
12. Capacitor
13. Electrical Box Back Plate
14. Electrical Harness

3 - CX - SPLIT SYSTEM

1 - CONDENSING COIL

PART NUMBER	CAPACITY (BTU)	VOLTAGE	PRICE (USD)
40015Q	10,000 - 12,000 BTU'S	ALL	€725.99
40016Q	16,000 BTU'S	ALL	€725.99
40017Q	24,000 BTU'S	ALL	€1,540.99
40018Q	36,000 BTU'S	ALL	€1,540.99
40019Q	48,000 BTU'S	ALL	€1,630.99

2 - SOLENOID

PART NUMBER	CAPACITY (BTU)	VOLTAGE	PRICE (USD)
40118V	ALL	115V	€29.99
40219V	ALL	230V	€29.99

3 - HIGH & LOW PRESSURE SWITCH

PART NUMBER	ITEM DESCRIPTION	PRICE (USD)
40010H	HIGH PRESSURE / 450 - 575 PSI / ALL BTU'S	€45.99
40011H	LOW PRESSURE / 450 - 575 PSI / ALL BTU'S	€45.99

4 - REVERSING VALVE

PART NUMBER	ITEM DESCRIPTION	PRICE (USD)
40012V	10,000 - 12,000 BTU'S	€60.99
40013V	16,000 BTU'S	€65.99
40014V	24,000 BTU'S	€75.99
40015V	36,000 - 48,000 BTU'S	€85.99

5 - COMPRESSOR

PART NUMBER	CAPACITY (BTU)	VOLTAGE	PRICE (USD)
40111K	10,000 - 12,000 BTU'S	115V	€379.99
40211K	10,000 - 12,000 BTU'S	230V	€399.99
40112K	16,000 BTU'S	115V	€435.99
40212K	16,000 BTU'S	230V	€455.99

*THIS CHART CONTINUES ON THE NEXT PAGE

SPLIT SYSTEM A/C UNITS

3 - CX - SPLIT SYSTEM

5 - COMPRESSOR

PART NUMBER	CAPACITY (BTU)	VOLTAGE	PRICE (USD)
40213K	24,000 BTU'S	230V	\$905.99
40214K	36,000 BTU'S	230V	\$1,085.99
40215K	48,000 BTU'S	230V	\$1,449.99

6 - DRYER

PART NUMBER	ITEM DESCRIPTION	PRICE (USD)
40011Y	10,000 - 12,000 BTU'S	€35.99
40012Y	16,000 BTU'S	€40.99
40013Y	24,000 BTU'S	€45.99
40014Y	36,000 BTU'S	€50.99
40015Y	48,000 BTU'S	€55.99

7 - DISCHARGE VALVE

PART NUMBER	ITEM DESCRIPTION	PRICE (USD)
40001V	10,000 - 12,000 BTU'S	€175.99
40003V	16,000 BTU'S	€179.99
40005V	24,000 - 36,000 - 48,000 BTU'S	€189.99

8 - SUCTION VALVE

PART NUMBER	ITEM DESCRIPTION	PRICE (USD)
40002V	10,000 - 12,000 BTU'S	€175.99
40004V	16,000 BTU'S	€179.99
40006V	24,000 - 36,000 - 48,000 BTU'S	€189.99

9 - DRAIN PAN

PART NUMBER	ITEM DESCRIPTION	PRICE (USD)
40017D	10,000 - 12,000 BTU'S - STAINLESS STEEL	€119.99
40018D	16,000 BTU'S - STAINLESS STEEL	€165.99
40019D	24,000 BTU'S - STAINLESS STEEL	€185.99

*THIS CHART CONTINUES ON THE NEXT PAGE

3 - CX - SPLIT SYSTEM

9 - DRAIN PAN

PART NUMBER	ITEM DESCRIPTION	PRICE (USD)
40020D	36,000 BTU'S - STAINLESS STEEL	€190.99
40021D	48,000 BTU'S - STAINLESS STEEL	€209.99

10 - ELECTRICAL BOX FRONT COVER

PART NUMBER	ITEM DESCRIPTION	PRICE (USD)
40008J	ALL BTU'S	€79.99

11 - CONTROL BOARD

PART NUMBER	ITEM DESCRIPTION	PRICE (USD)
40002C	U-BOARD VERSION 2.0	€255.99
40003C	U-BOARD WITH SOFT START INTEGRATED	€415.99
40004C	U-BOARD WITH NMEA 2000	€369.99

12 - CAPACITOR

PART NUMBER	ITEM DESCRIPTION	PRICE (USD)
40102U	10,000 BTU'S - 115V / 45 + 10 uF / 250VAC	€25.99
40202U	10,000 - 12,000 BTU'S - 230V / 25 + 3 uF / 440VAC	€25.99
40103U	12,000 BTU'S - 115V / 55 + 10 uF / 250VAC	€30.99
40105U	16,000 BTU'S - 115V / 55 + 16 uF / 250VAC	€39.99
40203U	16,000 BTU'S - 230V / 35 + 5 uF / 450VAC	€39.99
40204U	24,000 - 36,000 BTU'S - 230V / 50 + 8 uF / 450VAC	€45.99
40205U	48,000 BTU'S - 230V / 60 uF / 450VAC	€65.99

13 - ELECTRICAL BOX BACK PLATE

PART NUMBER	ITEM DESCRIPTION	PRICE (USD)
40009J	ALL BTU'S	€79.99

14 - ELECTRICAL HARNESS

PART NUMBER	ITEM DESCRIPTION	PRICE (USD)
40003L	ALL BTU'S	€79.99

4 - NMEA 2000 SPLIT SYSTEM A/C UNITS



We are excited to announce the launch of our NMEA 2000 compatible unit, a significant milestone in enhancing connectivity and integration across marine systems. With integration with **Garmin Empirbus** and **Onehelm, Raymarine yachtsense***, enabling complete NMEA 2000 embedded control from MFDs and other networked devices.

This will allow for seamless control of multiple HVAC units without the need for additional displays, fully utilizing the vessel's existing MFD, and digital switching, control systems.

Our new CTM Easycool 3.5 in Touchscreen Display will feature Bluetooth and Wi-Fi connectivity, allowing users to remotely monitor and control HVAC systems via our companion Apple or Android apps. Key features include control over operating modes, power, fan speed, operation adjustments, and real-time monitoring of inlet temperature and humidity, enhancing comfort and the user experience both onboard and remotely.

Refer to page 58 for NMEA 2000 Network Diagram

COMPATIBLE WITH:



GARMIN



SIMRAD



RAYMARINE

*All trademarks mentioned belong to their respective owners; use of these trademarks does not imply endorsement or affiliation.

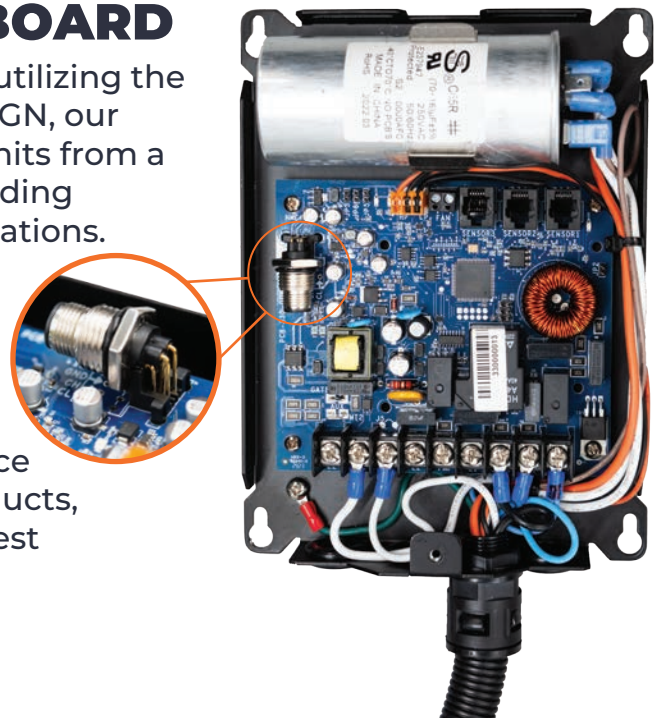
MODEL	CAPACITY (BTU)	VOLTAGE	CYCLE	PART NUMBER	MAP*
CX - 10N	10,000	115V	50 / 60 Hz	52132X	€2,890.00
CX - 10HN	10,000	230V	50 / 60 Hz	52232X	€2,950.00
CX - 12N	12,000	115V	50 / 60 Hz	53132X	€2,935.00
CX - 12HN	12,000	230V	50 / 60 Hz	53232X	€2,985.00
CX - 16N	16,000	115V	50 / 60 Hz	54132X	€3,045.00
CX - 16SN	16,000	115V	50 / 60 Hz	54432X	€3,235.00
CX - 16HN	16,000	230V	50 / 60 Hz	54232X	€3,089.00
CX - 16HSN	16,000	230V	50 / 60 Hz	54532X	€3,339.00
CX - 24HN	24,000	230V	50 / 60 Hz	55232X	€4,419.00
CX - 24HSN	24,000	230V	50 / 60 Hz	55532X	€4,705.00
CX - 36HN	36,000	230V	50 / 60 Hz	56232X	€4,895.00
CX - 36HSN	36,000	230V	50 / 60 Hz	56532X	€5,085.00
CX - 48HSN	48,000	230V	50 / 60 Hz	57232X	€6,939.00

H = 230V Unit S = W/ Soft Start N = NMEA 2000

NMEA 2000 UNIVERSAL BOARD

As an approved NMEA manufacturer, and utilizing the new NMEA 2000 HVAC Control standard PGN, our system allows for the control of multiple units from a single display or MFD, syncing zones, providing real-time monitoring, and simplifying operations.

Additionally, we will offer a retrofit kit to replace existing control boards and SMX displays used by other A/C systems over the last 20 years, bringing new technology and connectivity to already installed units. This advancement will significantly enhance the functionality and versatility of our products, ensuring customers have access to the latest technology and seamless integration.

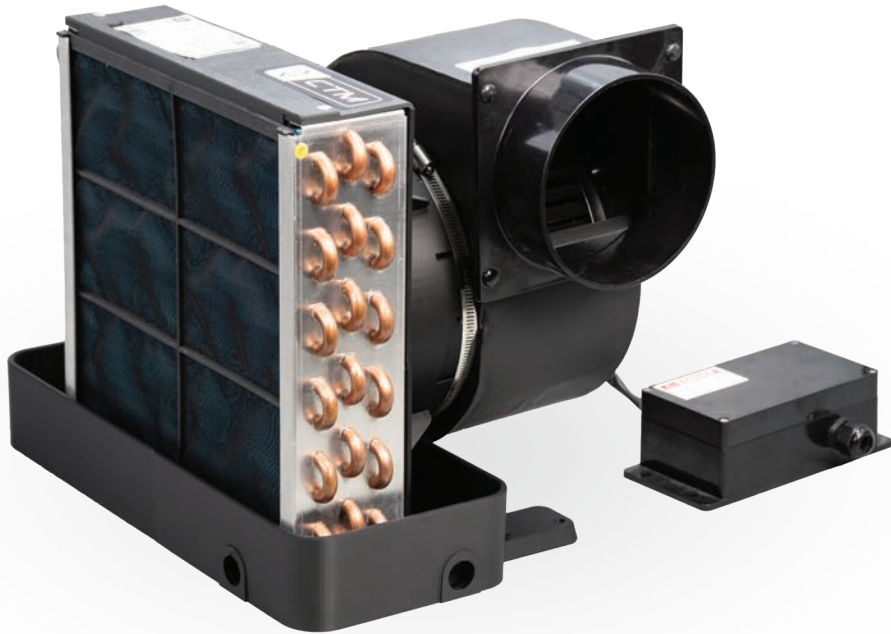


***MAP = Minimum Advertise Price (Units cannot be ADVERTISED at a lower price).**

Failure to follow MAP Policy will result in the suspension of the account

5 - EVAPORATOR UNITS

The CTM Marine Evaporators are powerful, quiet, and efficient. Stainless steel bolts and stainless steel structural pan ensure long-lasting, corrosion-proof evaporator performance in even the toughest of marine environments.



3D MODEL

EV

For Direct Expansion Units



**HIGH VELOCITY
ROTATABLE
TURBO FAN**



QUIET



**COMPACT
DESIGN**



**RUST FREE
PROTECTION
COAT**

MODEL	CAPACITY (BTU)	VOLTAGE	CYCLE	PART NUMBER	MAP*
EV - 6	6,000	115V	50 / 60 Hz	61101H	€689.00
EV - 6H	6,000	230V	50 / 60 Hz	61201H	€689.00
EV - 8	8,000	115V	50 / 60 Hz	62101H	€795.00
EV - 8H	8,000	230V	50 / 60 Hz	62201H	€795.00
EV - 10	10,000	115V	50 / 60 Hz	63101H	€855.00
EV - 10H	10,000	230V	50 / 60 Hz	63201H	€855.00
EV - 12	12,000	115V	50 / 60 Hz	64101H	€915.00
EV - 12H	12,000	230V	50 / 60 Hz	64201H	€915.00
EV - 16	16,000	115V	50 / 60 Hz	65101H	€1,205.00
EV - 16H	16,000	230V	50 / 60 Hz	65201H	€1,205.00
EV - 18	18,000	115V	50 / 60 Hz	66101H	€1,489.00
EV - 18H	18,000	230V	50 / 60 Hz	66201H	€1,489.00
EV - 24H	24,000	230V	50 / 60 Hz	67201H	€1,639.00

H = 230V Unit

**CHECK IF CTM IS COMPATIBLE
WITH YOUR CURRENT SYSTEM.**

SCAN ME

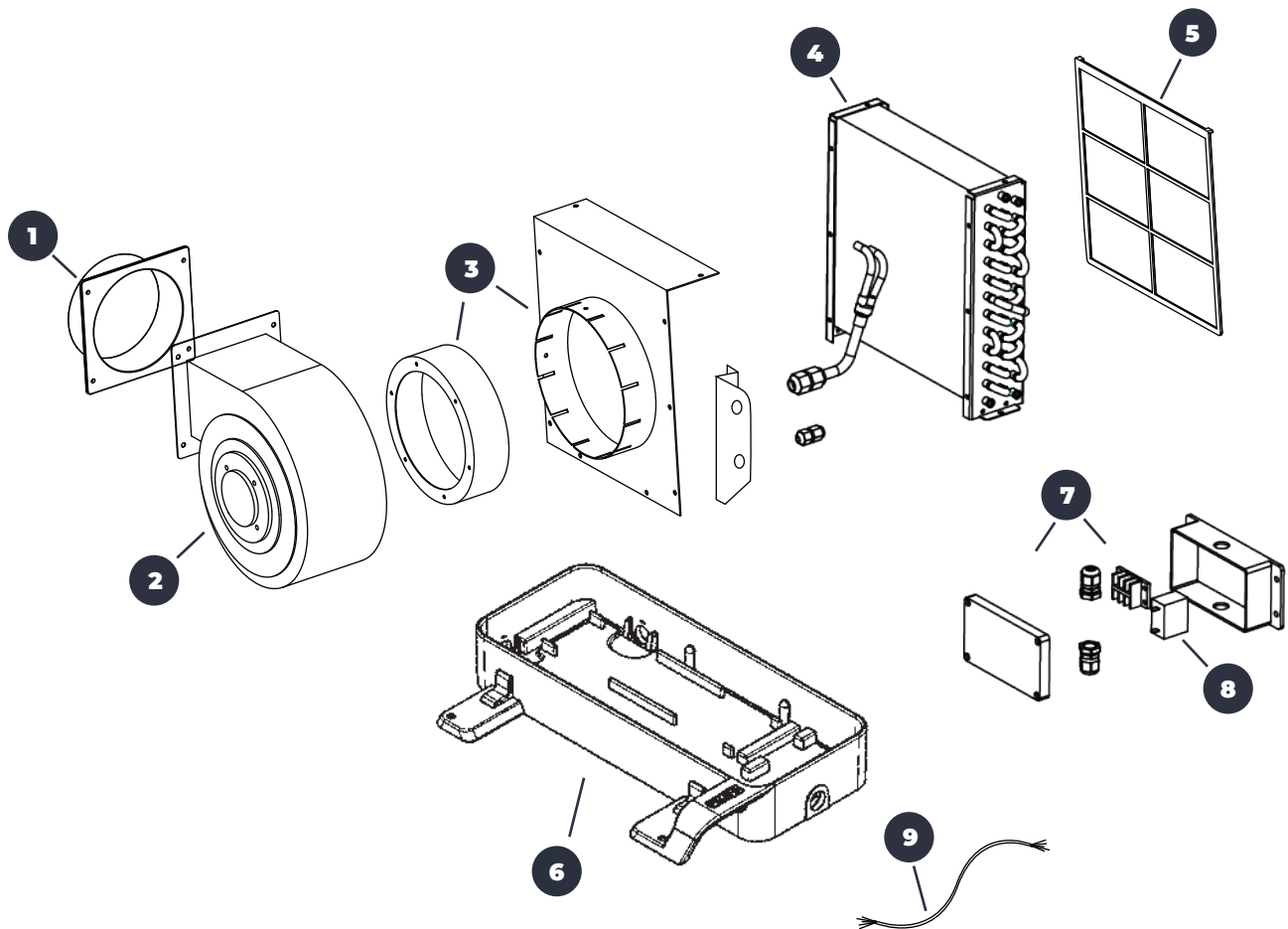


***MAP = Minimum Advertise Price (Units cannot be ADVERTISED at a lower price).**

Failure to follow MAP Policy will result in the suspension of the account

PARTS DIAGRAM

EV - EVAPORATOR UNITS



- 1. Mounting / Duct Ring
- 2. Blower / Fan
- 3. Plate & Ring For Blower
- 4. Evaporator Coil
- 5. Air Filter

- 6. ABS Drain Pan
- 7. Electrical Box
- 8. Blower Capacitor
- 9. Electrical Harness

5 - EV - EVAPORATOR

1 - MOUNTING / DUCT RING

PART NUMBER	CAPACITY (BTU)	SIZE	PRICE (USD)
40001M	6,000 - 8,000 BTU'S	4"	€20.99
40002M	10,000 - 12,000 BTU'S	5"	€25.99
40003M	16,000 BTU'S	6"	€28.99
40004M	24,000 BTU'S	7"	€29.99

2 - BLOWER / FAN

PART NUMBER	CAPACITY (BTU)	VOLTAGE	PRICE (USD)
40011B	6,000 BTU'S	115V	€280.99
40021B	6,000 BTU'S	230V	€280.99
40012B	8,000 BTU'S	115V	€290.99
40022B	8,000 BTU'S	230V	€290.99
40013B	10,000 - 12,000 BTU'S	115V	€300.99
40023B	10,000 - 12,000 BTU'S	230V	€300.99
40014B	14,000 - 16,000 BTU'S	115V	€329.99
40024B	14,000 - 16,000 BTU'S	230V	€329.99
40025B	24,000 BTU'S	230V	€435.99

3 - PLATE & RING FOR BLOWER

PART NUMBER	ITEM DESCRIPTION	PRICE (USD)
40011R	6,000 - 8,000 BTU'S	€19.99
40012R	10,000 - 12,000 BTU'S	€25.99
40013R	16,000 BTU'S	€29.99
40014R	24,000 BTU'S	€30.99

4 - EVAPORATOR COIL

PART NUMBER	ITEM DESCRIPTION	PRICE (USD)
40011E	6,000 - 8,000 BTU'S	€365.99
40012E	10,000 - 12,000 BTU'S	€455.99

*THIS CHART CONTINUES ON THE NEXT PAGE

5 - EV - EVAPORATOR

4 - EVAPORATOR COIL

PART NUMBER	ITEM DESCRIPTION	PRICE (USD)
40013E	16,000 BTU'S	€545.99
40014E	24,000 BTU'S	€639.99

5 - AIR FILTER

PART NUMBER	ITEM DESCRIPTION	PRICE (USD)
40011F	6,000 - 8,000 BTU'S	€25.99
40012F	10,000 - 12,000 BTU'S	€29.99
40013F	16,000 BTU'S	€30.99
40014F	24,000 BTU'S	€35.99

6 - ABS DRAIN PAN

PART NUMBER	ITEM DESCRIPTION	PRICE (USD)
40015D	6,000 - 8,000 BTU'S	€89.99
40016D	10,000 - 12,000 - 16,000 - 24,000 BTU'S	€95.99

7 - ELECTRICAL BOX

PART NUMBER	ITEM DESCRIPTION	PRICE (USD)
40002J	ALL BTU'S	€139.99

8 - BLOWER CAPACITOR

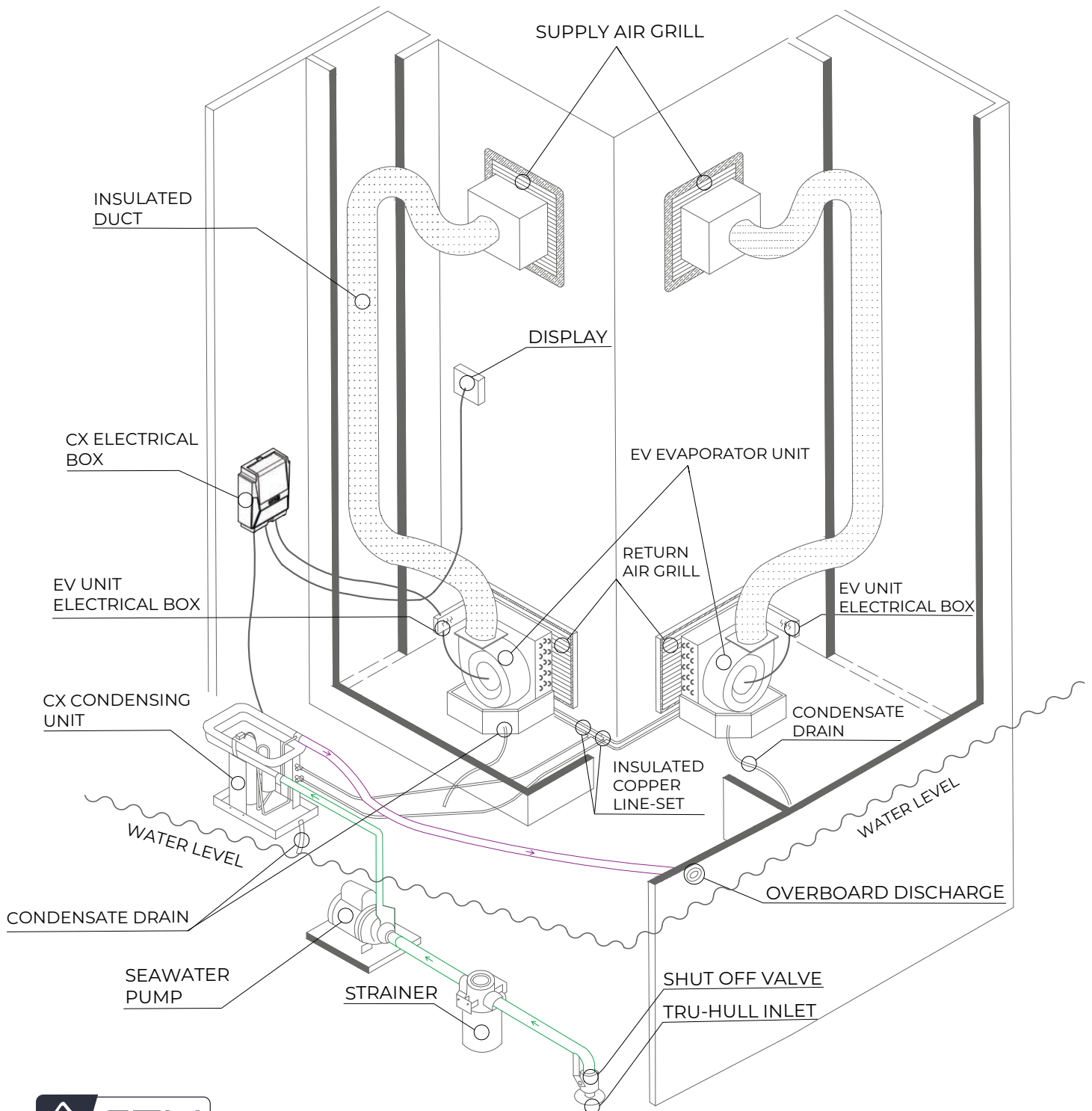
PART NUMBER	ITEM DESCRIPTION	PRICE (USD)
40107U	6,000 - 8,000 BTU'S - 115V / 6 uF / 450VAC	€20.99
40206U	6,000 - 8,000 BTU'S - 230V / 2 uF / 450VAC	€20.99
40108U	10,000 - 12,000 BTU'S - 115V / 10 uF / 250 - 450VAC	€30.99
40207U	10,000 - 12,000 BTU'S - 230V / 3 uF / 450VAC	€25.99
40109U	16,000 BTU'S - 115V / 16 uF / 250VAC	€30.99
40208U	16,000 BTU'S - 230V / 5 uF / 450VAC	€20.99
40209U	24,000 BTU'S - 230V / 8 uF / 450VAC	€35.99

5 - EV - EVAPORATOR

9 - ELECTRICAL HARNESS

PART NUMBER	ITEM DESCRIPTION	PRICE (USD)
40002L	ALL BTU'S	€35.99

DUAL EVAPORATOR SPLIT SYSTEM INSTALLATION DIAGRAM



6 - CHILLED WATER SYSTEMS

The CTM Marine Chilled Water System is the best option whenever three or more independent areas need to be air conditioned throughout the vessel.



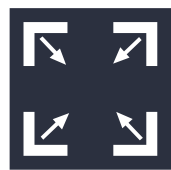
CW
Marine Chillers With Titanium Coils



3D MODEL



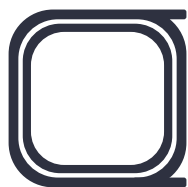
QUIET



**COMPACT
DESIGN**



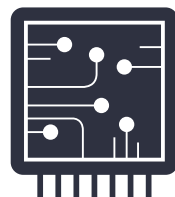
**RUST FREE
PROTECTION
COAT**



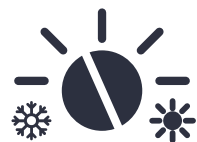
**TITANIUM
COIL**



**GMCC
COMPRESSOR**



**DDC CONTROL
BOARD**



COOL / HEAT

MODEL	CAPACITY (BTU)	VOLTAGE	CYCLE	PART NUMBER	MAP*
CW - 24H	24,000	230V	60HZ / 1Ph	31221W	€4,085.00
CW - 36HS	36,000	230V	60HZ / 1Ph	32521W	€6,269.00
CW - 48HS	48,000	230V	60HZ / 1Ph	33521W	€7,219.00
CW - 60HS	60,000	230V	60HZ / 1Ph	34521W	€8,169.00
CW - 72HS	72,000	230V	60HZ / 1Ph	35521W	€9,309.00
CW - 72H3	72,000	230V	60HZ / 3Ph	35321W	€10,259.00

H = 230V Unit S = W/ Soft Start

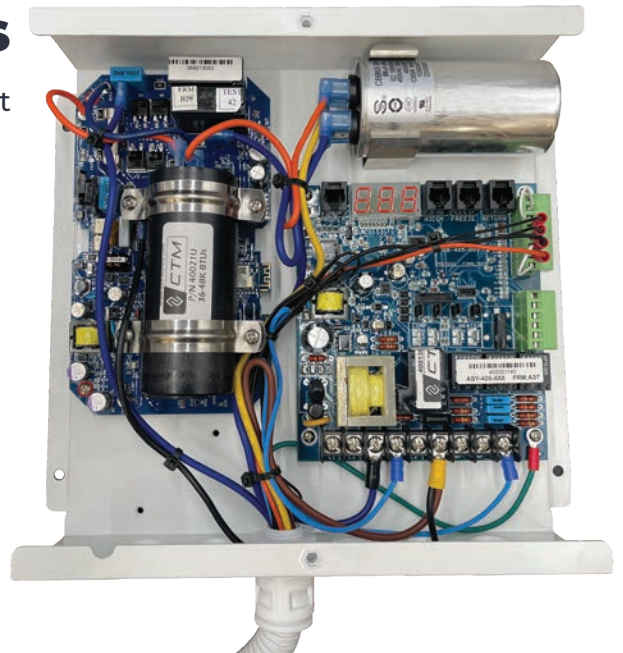
**CHECK IF CTM IS COMPATIBLE
WITH YOUR CURRENT SYSTEM.**

SCAN ME



DDC CONTROL BOARD FEATURES

- SMT (surface mount technology) reduces component size and frees up space for hardware improvements.
- New AC Voltmeter (± 2 volt accuracy) for brownout protection.
- Pilot duty relays for compressor and heater outputs when the load requires contactors.
- "Euro signal terminals" ease wiring and reduces board space requirements.
- User-friendly push button programming interface replaces the trim pots and allows parameter viewing without disrupting settings.
- Universal 115/220-volt switch mode power supply eliminates large AC transformer, requires less board space and improves 115-volt brownout operation.



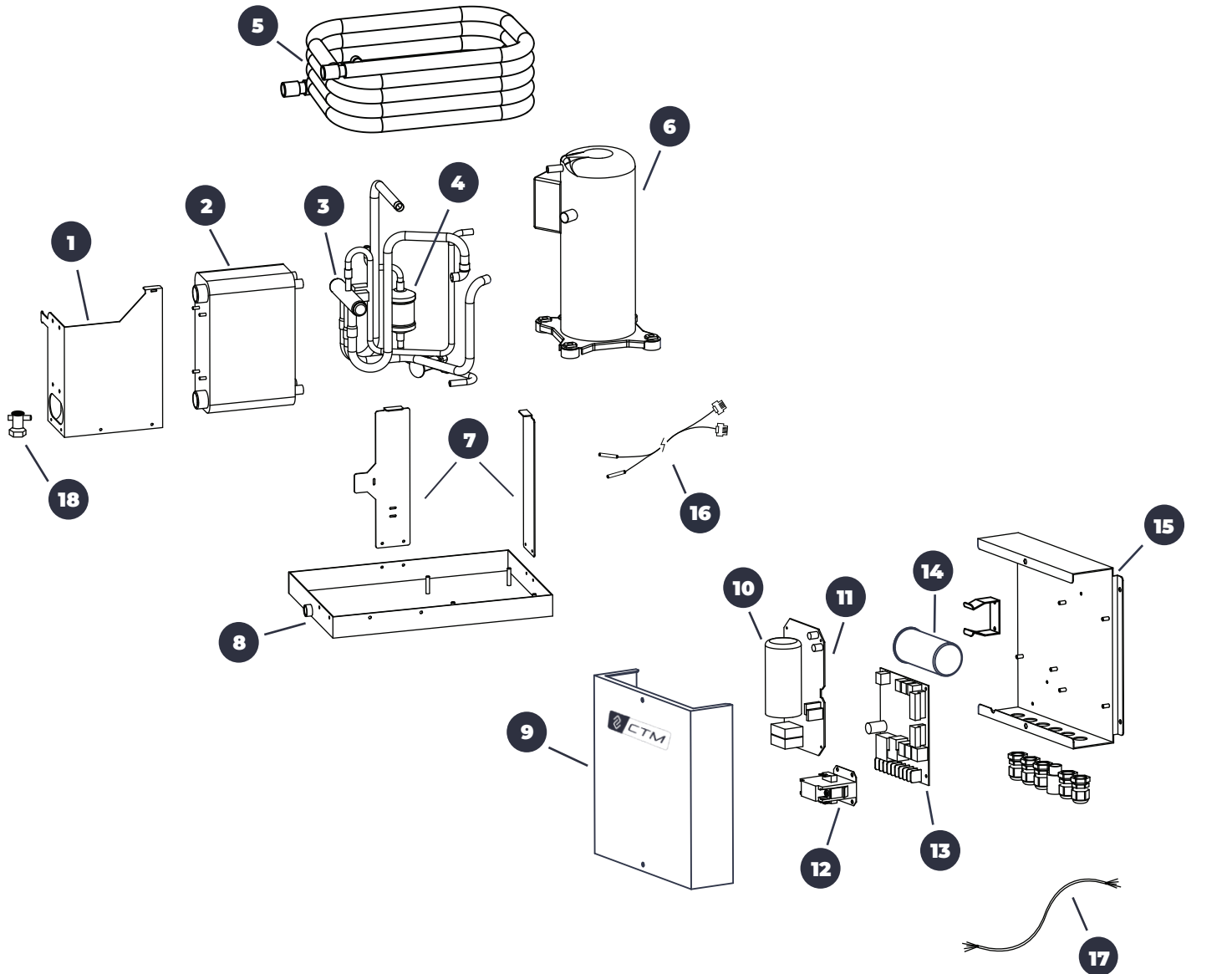
***MAP = Minimum Advertise Price (Units cannot be ADVERTISED at a lower price).**

Failure to follow MAP Policy will result in the suspension of the account



PARTS DIAGRAM

CW - CHILLED WATER SYSTEMS



1. Heat Exchanger Cover
2. Heat Exchanger
3. Reversing Valve
4. Dryer
5. Condensing Coil
6. Compressor

7. Structure Support Plates Kit
8. Drain Pan
9. Electrical Box Front Cover
10. Easy Start Capacitor
11. Easy Start Control Board
12. Contactor

13. DDC Control Board
14. Start / Run Capacitor
15. Electrical Box Back Plate
16. Water Temperature Sensors
17. Electrical Harness
18. Flow Control Switch

6 - CW - CHILLED WATER SYSTEMS

1 - HEAT EXCHANGER COVER

PART NUMBER	ITEM DESCRIPTION	PRICE (USD)
40000X	ALL BTU'S	€139.99

2 - HEAT EXCHANGER

PART NUMBER	ITEM DESCRIPTION	PRICE (USD)
40001X	24,000 BTU'S	€465.99
40002X	36,000 BTU'S	€519.99
40003X	48,000 BTU'S	€599.99
40004X	60,000 BTU'S	€655.99
40005X	72,000 BTU'S	€699.99

3 - REVERSING VALVE

PART NUMBER	ITEM DESCRIPTION	PRICE (USD)
40021V	24,000 BTU'S	€75.99
40022V	36,000 BTU'S	€85.99
40023V	48,000 BTU'S	€89.99
40024V	60,000 BTU'S	€90.99
40025V	72,000 BTU'S	€95.99

4 - DRYER

PART NUMBER	ITEM DESCRIPTION	PRICE (USD)
40013Y	24,000 BTU'S	€45.99
40014Y	36,000 BTU'S	€50.99
40015Y	48,000 BTU'S	€55.99
40016Y	60,000 BTU'S	€60.99
40017Y	72,000 BTU'S	\$65.99

6 - CW - CHILLED WATER SYSTEMS

5 - CONDENSING COIL

PART NUMBER	CAPACITY (BTU)	VOLTAGE	PRICE (USD)
40021Q	24,000 BTU'S	ALL	€1,540.99
40022Q	36,000 BTU'S	ALL	€1,540.99
40023Q	48,000 BTU'S	ALL	€1,630.99
40024Q	60,000 BTU'S	ALL	€1,815.99
40025Q	72,000 BTU'S	ALL	€1,815.99

6 - COMPRESSOR

PART NUMBER	CAPACITY (BTU)	VOLTAGE	PRICE (USD)
40213K	24,000 BTU'S	230V	€905.99
40214K	36,000 BTU'S	230V	€1,085.99
40215K	48,000 BTU'S	230V	€1,449.99
40216K	60,000 BTU'S	230V	€1,719.99
40217K	72,000 BTU'S	230V	€1,829.99

7 - STRUCTURE SUPPORT PLATES KIT

PART NUMBER	ITEM DESCRIPTION	PRICE (USD)
40001Z	24,000 BTU'S	€25.99
40002Z	36,000 BTU'S	€30.99
40003Z	48,000 BTU'S	€45.99
40004Z	60,000 BTU'S	€50.99
40005Z	72,000 BTU'S	€59.99

8 - DRAIN PAN

PART NUMBER	ITEM DESCRIPTION	PRICE (USD)
40022D	24,000 BTU'S - STAINLESS STEEL	€185.99
40023D	36,000 BTU'S - STAINLESS STEEL	€190.99
40024D	48,000 BTU'S - STAINLESS STEEL	€199.99
40025D	60,000 BTU'S - STAINLESS STEEL	€209.99

*THIS CHART CONTINUES ON THE NEXT PAGE

6 - CW - CHILLED WATER SYSTEMS

8 - DRAIN PAN

PART NUMBER	ITEM DESCRIPTION	PRICE (USD)
40026D	72,000 BTU'S - STAINLESS STEEL	€219.99

9 - ELECTRICAL BOX FRONT COVER

PART NUMBER	ITEM DESCRIPTION	PRICE (USD)
40006J	ALL BTU'S	€79.99

10 - EASY START CAPACITOR

PART NUMBER	CAPACITY (BTU)	VOLTAGE	PRICE (USD)
40021U	24,000 - 48,000 BTU'S	189 - 223 uF / 330VAC	€30.99
40022U	60,000 - 72,000 BTU'S	270 - 324 uF / 330VAC	€35.99

11 - EASY START CONTROL BOARD

PART NUMBER	ITEM DESCRIPTION	PRICE (USD)
40024C	ALL BTU'S	€585.99

12 - CONTACTOR

PART NUMBER	ITEM DESCRIPTION	PRICE (USD)
40022L	ALL BTU'S	€75.99

13 - DDC CONTROL BOARD

PART NUMBER	ITEM DESCRIPTION	PRICE (USD)
40023C	ALL BTU'S	€495.99

14 - START / RUN CAPACITOR

PART NUMBER	ITEM DESCRIPTION	PRICE (USD)
40204U	24,000 - 36,000 BTU'S - 230 V / 50 + 8 uF / 450VAC	€45.99
40205U	48,000 - 60,000 - 72,000 BTU'S - 230 V / 60 uF / 450VAC	€65.99

6 - CW - CHILLED WATER SYSTEMS

15 - ELECTRICAL BOX BACK PLATE

PART NUMBER	ITEM DESCRIPTION	PRICE (USD)
40007J	ALL BTU'S	€79.99

16 - WATER TEMPERATURE SENSORS

PART NUMBER	ITEM DESCRIPTION	PRICE (USD)
40016T / WTS7	7 FT - CHILLER UNITS	€49.99
40017T / WTS10	10 FT - CHILLER UNITS	€55.99
40018T / WTS20	20 FT - CHILLER UNITS	€65.99
40019T / WTS30	30 FT - CHILLER UNITS	€79.99
40010T / WTS50	50 FT - CHILLER UNITS	€100.99
40023L	CW TEMPERATURE SENSOR HARNESS	€90.99

17 - ELECTRICAL HARNESS

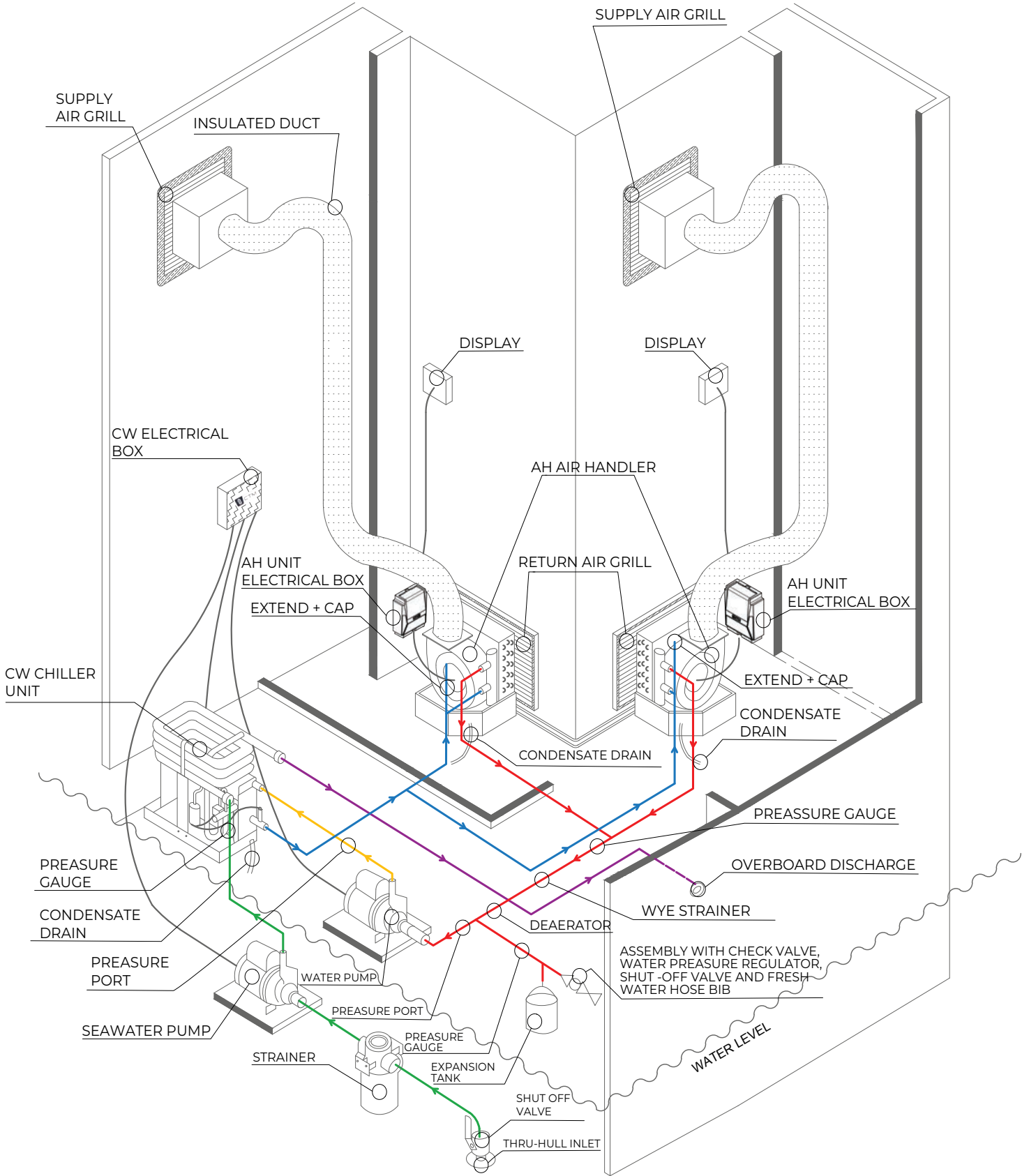
PART NUMBER	ITEM DESCRIPTION	PRICE (USD)
40021L	ALL BTU'S	€89.99

18 - FLOW CONTROL SWITCH

PART NUMBER	ITEM DESCRIPTION	PRICE (USD)
40008V	ALL BTU'S	€119.99



CHILLED WATER SYSTEM INSTALLATION DIAGRAM



7 - AIR HANDLER UNITS

The CTM Marine Air Handlers are lightweight, compact with a rotatable blower stainless steel frame with Abs composite pan and flow control valve.



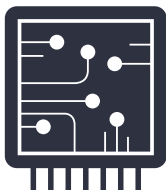
3D MODEL

AH

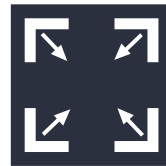
For Chilled Water System Units



**HIGH VELOCITY
ROTATABLE
TURBO FAN**



**UNIVERSAL
BOARD**



**COMPACT
DESIGN**



**RUST FREE
PROTECTION
COAT**

MODEL	CAPACITY (BTU)	VOLTAGE	CYCLE	PART NUMBER	MAP*
AH - 6H	6,000	230V	50 / 60HZ / 1Ph	71201A	€1,425.00
AH - 8H	8,000	230V	50 / 60HZ / 1Ph	72201A	€1,519.00
AH - 10H	10,000	230V	50 / 60HZ / 1Ph	73201A	€1,615.00
AH - 12H	12,000	230V	50 / 60HZ / 1Ph	74201A	€1,709.00
AH - 16H	16,000	230V	50 / 60HZ / 1Ph	75201A	€1,899.00
AH - 24H	24,000	230V	50 / 60HZ / 1Ph	76201A	€2,089.00

H = 230V Unit

**CHECK IF CTM IS COMPATIBLE
WITH YOUR CURRENT SYSTEM.**

SCAN ME



UNIVERSAL BOARD

Next generation control board is compatible with most controllers in the market, such as OEM Brands like Dometic, Cruisair, Micro Air, Aqua Air, Flow and Marine Air*. Also supports the TSEP Temperature sensor. Made in USA.



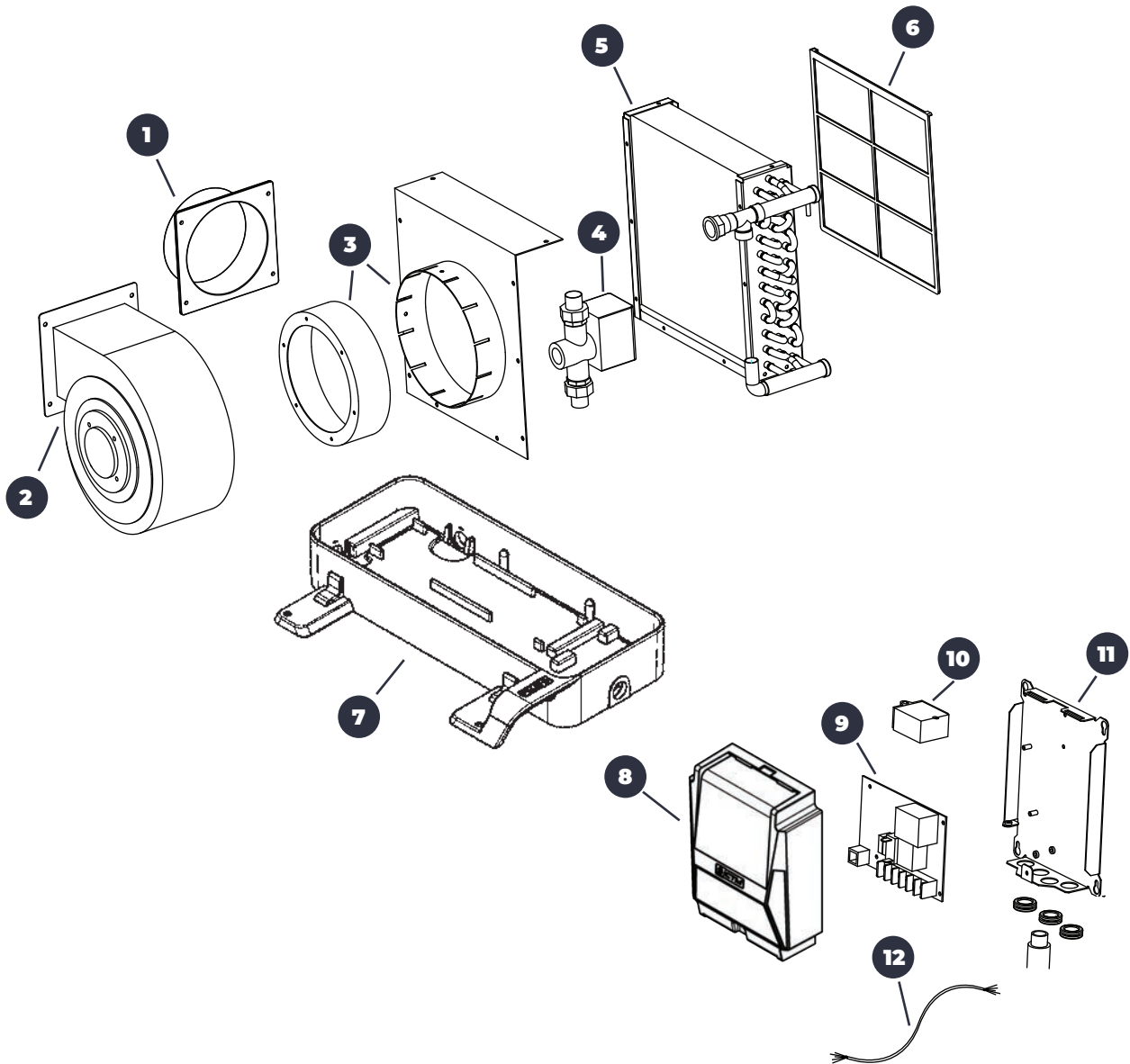
***MAP = Minimum Advertise Price (Units cannot be ADVERTISED at a lower price).**

Failure to follow MAP Policy will result in the suspension of the account

*All trademarks mentioned belong to their respective owners; use of these trademarks does not imply endorsement or affiliation.

PARTS DIAGRAM

AH - AIR HANDLERS



1. Mounting Duct Ring
 2. Blower / Fan
 3. Plate & Ring For Blower
 4. Flow Control Valve
 5. Evaporator Coil

6. Air Filter
 7. ABS Drain Pan
 8. Electrical Box Front Cover
 9. Control Board
 10. Compressor Relay

11. Electrical Box Back Plate
 12. Electrical Harness

7 - AH - AIR HANDLERS

1 - MOUNTING / DUCT RING

PART NUMBER	CAPACITY (BTU)	SIZE	PRICE (USD)
40001M	6,000 - 8,000 BTU'S	4"	€20.99
40002M	12,000 BTU'S	5"	€25.99
40003M	16,000 BTU'S	6"	€28.99
40004M	24,000 BTU'S	7"	€29.99

2 - BLOWER / FAN

PART NUMBER	CAPACITY (BTU)	VOLTAGE	PRICE (USD)
40011B	6,000 BTU'S	115V	€280.99
40021B	6,000 BTU'S	230V	€280.99
40012B	8,000 BTU'S	115V	€290.99
40022B	8,000 BTU'S	230V	€290.99
40013B	10,000 - 12,000 BTU'S	115V	€300.99
40023B	10,000 - 12,000 BTU'S	230V	€300.99
40014B	16,000 BTU'S	115V	€329.99
40024B	16,000 BTU'S	230V	€329.99
40025B	24,000 BTU'S	230V	€435.99

3 - PLATE & RING FOR BLOWER

PART NUMBER	ITEM DESCRIPTION	PRICE (USD)
40011R	6,000 - 8,000 BTU'S	€19.99
40012R	10,000 - 12,000 BTU'S	€25.99
40013R	16,000 BTU'S	€29.99
40014R	24,000 BTU'S	€30.99

4 - FLOW CONTROL VALVE

PART NUMBER	ITEM DESCRIPTION	PRICE (USD)
40007V	ALL BTU'S	€299.99

7 - AH - AIR HANDLERS

5 - EVAPORATOR COIL

PART NUMBER	ITEM DESCRIPTION	PRICE (USD)
40011E	6,000 - 8,000 BTU'S	€365.99
40012E	10,000 - 12,000 BTU'S	€455.99
40013E	16,000 BTU'S	€545.99
40014E	24,000 BTU'S	€639.99

6 - AIR FILTER

PART NUMBER	ITEM DESCRIPTION	PRICE (USD)
40011F	6,000 - 8,000 BTU'S	€25.99
40012F	10,000 - 12,000 BTU'S	€29.99
40013F	16,000 BTU'S	€30.99
40014F	24,000 BTU'S	€35.99

7 - ABS DRAIN PAN

PART NUMBER	ITEM DESCRIPTION	PRICE (USD)
40015D	6,000 - 8,000 BTU'S	€89.99
40016D	10,000 - 12,000 - 16,000 - 24,000 BTU'S	€95.99

8 - ELECTRICAL BOX FRONT COVER

PART NUMBER	ITEM DESCRIPTION	PRICE (USD)
40004J	ALL BTU'S	€69.99

9 - CONTROL BOARD

PART NUMBER	ITEM DESCRIPTION	PRICE (USD)
40002C	U-BOARD VERSION 2.0	€355.99
40003C	U-BOARD WITH SOFT START INTEGRATED	€415.99
40004C	U-BOARD WITH NMEA 2000	€369.99

7 - AH - AIR HANDLERS

10 - COMPRESSOR RELAY

PART NUMBER	ITEM DESCRIPTION	PRICE (USD)
40011L	6,000 - 8,000 BTU'S	€45.99
40012L	10,000 - 12,000 BTU'S	€49.99
40013L	16,000 - 18,000 BTU'S	€55.99
40014L	24,000 BTU'S	€59.99

11 - ELECTRICAL BOX BACK PLATE

PART NUMBER	ITEM DESCRIPTION	PRICE (USD)
40005J	ALL BTU'S	€69.99

12 - ELECTRICAL HARNESS

PART NUMBER	ITEM DESCRIPTION	PRICE (USD)
40004L	ALL BTU'S	€79.99



***MAP = Minimum Advertise Price (Units cannot be ADVERTISED at a lower price).**
Failure to follow MAP Policy will result in the suspension of the account

8 - NMEA 2000 AIR HANDLER UNITS



We are excited to announce the launch of our NMEA 2000 compatible unit, a significant milestone in enhancing connectivity and integration across marine systems. With integration with **Garmin Empirbus** and **Onehelm**, **Raymarine yachtsense***, enabling complete NMEA 2000 embedded control from MFDs and other networked devices.

This will allow for seamless control of multiple HVAC units without the need for additional displays, fully utilizing the vessel's existing MFD, and digital switching, control systems.

Our new CTM Easycool 3.5 in Touchscreen Display will feature Bluetooth and Wi-Fi connectivity, allowing users to remotely monitor and control HVAC systems via our companion Apple or Android apps. Key features include control over operating modes, power, fan speed, operation adjustments, and real-time monitoring of inlet temperature and humidity, enhancing comfort and the user experience both onboard and remotely.

Refer to page 58 for NMEA 2000 Network Diagram

COMPATIBLE WITH:



GARMIN



SIMRAD



RAYMARINE

*All trademarks mentioned belong to their respective owners; use of these trademarks does not imply endorsement or affiliation.

MODEL	CAPACITY (BTU)	VOLTAGE	CYCLE	PART NUMBER	MAP*
AH - 6HN	6,000	230V	50 / 60HZ / 1Ph	71232A	€2,115.00
AH - 8HN	8,000	230V	50 / 60HZ / 1Ph	72232A	€2,209.00
AH - 10HN	10,000	230V	50 / 60HZ / 1Ph	73232A	€2,305.00
AH - 12HN	12,000	230V	50 / 60HZ / 1Ph	74232A	€2,399.00
AH - 16HN	16,000	230V	50 / 60HZ / 1Ph	75232A	€2,589.00
AH - 24HN	24,000	230V	50 / 60HZ / 1Ph	76232A	€2,779.00

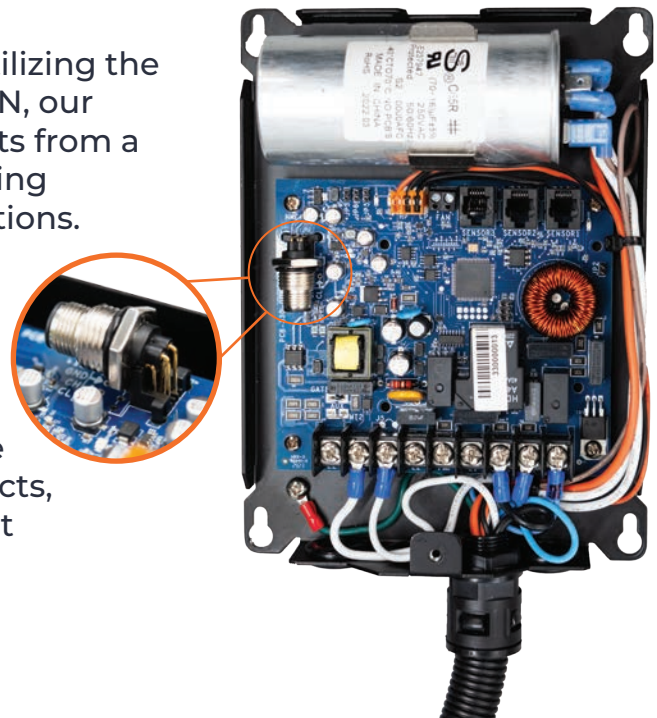
H = 230V Unit N = NMEA 2000

***MAP = Minimum Advertise Price (Units cannot be ADVERTISED at a lower price).**

Failure to follow MAP Policy will result in the suspension of the account

NMEA 2000 UNIVERSAL BOARD

As an approved NMEA manufacturer, and utilizing the new NMEA 2000 HVAC Control standard PGN, our system allows for the control of multiple units from a single display or MFD, syncing zones, providing real-time monitoring, and simplifying operations. Additionally, we will offer a retrofit kit to replace existing control boards and SMX displays used by other A/C systems over the last 20 years, bringing new technology and connectivity to already installed units. This advancement will significantly enhance the functionality and versatility of our products, ensuring customers have access to the latest technology and seamless integration.



*Check your manual for compatibility.

*All trademarks mentioned belong to their respective owners; use of these trademarks does not imply endorsement or affiliation.

9 - CONTROLS & ACCESSORIES

1 - CONTROL BOARDS

PART NUMBER	ITEM DESCRIPTION	PRICE (USD)
40002C	U-BOARD VERSION 2.0	€355.99
40003C	U-BOARD W/ SOFT START INTEGRATED	€415.99
40004C	U-BOARD WITH NMEA 2000	€369.99
40005C	2 - STATION PUMP RELAY BOARD IN METAL BOX	€329.99
40006C	6 - STATION PUMP RELAY BOARD IN METAL BOX	€365.99
40011C	HTML5 INTERFACE BOX	€519.99
40023C	DDC BOARD	€495.99
40024C	EASY START BOARD	€585.99

2 - CONTROL CABLES

PART NUMBER	ITEM DESCRIPTION	PRICE (USD)
40010G	5FT / 8-PIN	€20.99
40011G	10FT / 8-PIN	€25.99
40012G	15FT / 8-PIN	€29.99
40013G	20FT / 8-PIN	€35.99
40014G	30FT / 8-PIN	€39.99
40015G	5FT / 6-PIN	€20.99
40016G	10FT / 6-PIN	€35.99
40017G	15FT / 6-PIN	€39.99
40018G	20FT / 6-PIN	€40.99
40019G	30FT / 6-PIN	€45.99
40020G	NMEA STARTER KIT (6FT)	€119.99

3 - THERMOSTATS

PART NUMBER	ITEM DESCRIPTION	PRICE (USD)
40001A	SOFT TOUCH 8-PIN	€255.99
40002A	SOFT TOUCH 8-PIN / WIFI	€275.99

*THIS CHART CONTINUES ON THE NEXT PAGE

9 - CONTROLS & ACCESSORIES

3 - THERMOSTATS

PART NUMBER	ITEM DESCRIPTION	PRICE (USD)
40003A	SMXIR	€190.99
40005A	ELITE CONTROL GRAY	€209.99
40006A	EASY COOL STANDARD - 3.5" FOR NMEA 2000	€260.99
40007A	EASY COOL MINI - 2.4" FOR NMEA 2000	€260.99

4 - INVERTERS

PART NUMBER	ITEM DESCRIPTION	PRICE (USD)
40101I	IC-1200 W - 12V -115V	€589.99
40102I	1200 W - 24V - 115V	€589.99
40201I	1200 W - 12V - 230V	€589.99
40202I	1200 W - 24V - 230V	€589.99

5 - WATER TEMPERATURE SENSORS

PART NUMBER	ITEM DESCRIPTION	PRICE (USD)
40011T / TSEP5	5FT	€39.99
40012T / TSEP10	10FT	€45.99
40013T / TSEP20	20FT	€65.99
40014T / TSEP30	30FT	€75.99
40015T / TSEP40	40FT	€85.99
40016T / WTS7	7FT - CHILLER UNITS	€49.99
40017T / WTS10	10FT - CHILLER UNITS	€55.99
40018T / WTS20	20FT - CHILLER UNITS	€65.99
40019T / WTS30	30FT - CHILLER UNITS	€79.99
40010T / WTS50	50FT - CHILLER UNITS	€100.99
40001T	TEMPERATURE SENSOR FOR NMEA2000 BOARD	€119.99
40023L	CW TEMPERATURE SENSOR HARNESS	€90.99
40005O	CW TEMPERATURE SENSOR HOLDERS - PAIR	€10.99

9 - CONTROLS & ACCESSORIES

6 - INSULATED DUCTS

PART NUMBER	ITEM DESCRIPTION	PRICE (USD)
40001N	25FT - 3"	€65.99
40002N	25FT - 4"	€69.99
40003N	25FT - 5"	€70.99
40004N	25FT - 6"	€80.99
40005N	25FT - 7"	€85.99

7 - WATER HOSE

PART NUMBER	ITEM DESCRIPTION	PRICE (USD)
40001W	5/8" - 450 PSI - 50FT	€75.99
40002W	5/8" - 450 PSI - 250FT	€265.99

8 - ELECTRICAL BOXES - EMPTY

PART NUMBER	ITEM DESCRIPTION	PRICE (USD)
40002J	CT, CX, EV AND AH UNITS	€139.99
40003J	CW UNITS	€155.99

9 - ELECTRICAL BOX BRACKET MOUNT

PART NUMBER	ITEM DESCRIPTION	PRICE (USD)
40001O	CX UNITS - 10,000 TO 16,000 BTU'S	€35.99
40002O	CX UNITS -24,000 TO 36,000 BTU'S	€45.99
40003O	CX UNITS - 48,000 BTU'S	€55.99

10 - SMXII WALL PLATE COVER

PART NUMBER	ITEM DESCRIPTION	PRICE (USD)
40004O	SMXII WALL PLATE COVER FITS SMXIR, ELITE II & EASY TOUCH	€29.99
40006O	SMXII COVER PLATE	€25.99
40007O	SMXII COVER PLATE CARBON FIBER	€25.99
40008O	SMXII WALL PLATE COVER FITS SMXIR, ELITE II & EASY TOUCH - CARBON FIBER	€28.99

9 - CONTROLS & ACCESSORIES

11 - POWER ISOLATOR

PART NUMBER	ITEM DESCRIPTION	PRICE (USD)
40005L	POWER ISOLATOR FOR NMEA 2000	€19.99

12 - MOUNTING / DUCT RING

PAGE NUMBER

REFER TO MODELS CT, EV, AH	9 - 27 - 41
----------------------------	-------------

13 - BLOWER / FAN

PAGE NUMBER

REFER TO MODELS CT, EV, AH	9 - 27 - 41
----------------------------	-------------

14 - FLOW CONTROL VALVE

PAGE NUMBER

REFER TO MODEL AH	41
-------------------	----

15 - STAINLESS STEEL DRAIN PANS

PAGE NUMBER

REFER TO MODELS CX, CW	20 - 21 - 34 - 35
------------------------	-------------------

16 - ABS DRAIN PANS

PAGE NUMBER

REFER TO MODELS CT, EV, AH	11 - 28 - 42
----------------------------	--------------

17 - EVAPORATOR COIL

PAGE NUMBER

REFER TO MODELS CT, EV, AH	10 - 27 - 28 - 42
----------------------------	-------------------

18 - AIR FILTERS

PAGE NUMBER

REFER TO MODELS CT, EV, AH	10 - 28 - 42
----------------------------	--------------

19 - DRYERS

PAGE NUMBER

REFER TO MODELS CT, CX, CW	10 - 20 - 33
----------------------------	--------------

20 - EMPTY ELECTRICAL BOXES

PAGE NUMBER

REFER TO MODELS CT, CX, EV, CW, AH	11 - 12 - 21 - 28 - 35 - 36 - 42 - 43
------------------------------------	---------------------------------------

21 - COMPRESSORS

PAGE NUMBER

REFER TO MODEL CT, CX, CW	10 - 19 - 20 - 34
---------------------------	-------------------

22 - COMPRESSOR RELAY

PAGE NUMBER

REFER TO MODEL AH	43
-------------------	----

9 - CONTROLS & ACCESSORIES

23 - PLATE & RING FOR BLOWER

PAGE NUMBER

REFER TO MODEL CT, EV, AH

9 - 27 - 41

24 - CAPACITORS

PAGE NUMBER

REFER TO MODELS CT, CX, EV, CW

12 - 21 - 28 - 35

25 - REVERSING VALVE & VALVES

PAGE NUMBER

REFER TO MODELS CT, CX, CW, AH

11 - 19 - 33 - 41

26 - HEAT EXCHANGERS

PAGE NUMBER

REFER TO MODEL CW

33

27 - SUPPORT PLATES

PAGE NUMBER

REFER TO MODEL CW

34

28 - ELECTRICAL HARNESS

PAGE NUMBER

REFER TO MODELS CT, CX, EV, CW, AH

12 - 21 - 29 - 36 - 43

29 - CONDENSING COIL

PAGE NUMBER

REFER TO MODELS CT, CX, CW

9 - 19 - 34

30 - SOLENOID

PAGE NUMBER

REFER TO MODELS CT, CX

11 - 19

31 - HIGH & LOW PRESSURE SWITCH

PAGE NUMBER

REFER TO MODELS CT, CX

11 - 19

32 - HEAT EXCHANGER COVER

PAGE NUMBER

REFER TO MODELS CW

33

33 - CONTACTOR

PAGE NUMBER

REFER TO MODELS CW

35

34 - FLOW CONTROL SWITCH

PAGE NUMBER

REFER TO MODELS CW

36

9 - CONTROLS & ACCESSORIES

35 - RETROFIT KIT

PART NUMBER	ITEM DESCRIPTION	PRICE (USD)
40000J	A - RETROFIT KIT U-BOARD W/METAL BOX	€455.99
40001J	B - RETROFIT KIT U-BOARD W/METAL BOX CABLE & SMXIR	€589.99
40010J	C- NMEA 2000 RETROFIT KIT	€779.99

RETROFIT KITS

A - RETROFIT KIT U-BOARD W/METAL BOX

The CTM Retrofit Kit is specially designed to replace older Mechanical Controls to the New SMXir, Passport I/O or Digital Controls using U-Board.



B - RETROFIT KIT U-BOARD W/METAL BOX CABLE & SMXIR

The CTM Retrofit kit package is used to upgrade older Marine Air or Cruisair 3-Knob mechanical control to New SMXIR using U-Board.

This Retrofit Kit includes the following:

- 1.New CTM Retrofit kit box with U-Board
- 2.SMXIR Display
- 3.CXP Cable
- 4.Temperature Sensor



C - NMEA 2000 RETROFIT KIT

The new CTM NMEA2000 Control U-Board and Thermostat seamlessly integrates with any NMEA network, making it easy to retrofit older **CTM, Dometic, Cruisair, Aqua Air, Flow or Marine Air*** conditioning units that used previous-generation control boards.

Additionally, this advanced thermostat enables remote operation via mobile application, allowing you to control your Air Conditioning system from your phone, as long as your vessel has a stable internet connection.

The Retrofit Kit includes the following:

- 1.NMEA 2000 Universal Control Board
- 2.NMEA 2000 T-Connector
- 3.NMEA 2000 Display Cable
- 4.Humidity and Temperature Sensor
- 5.Touchscreen Display
- 6.Metal Electrical Box with Plastic Cover



*All trademarks mentioned belong to their respective owners; use of these trademarks does not imply endorsement or affiliation.

10 - MARINE PUMPS

CTM Marine Pumps stand out with their lightweight, compact design, rust-free protection, dual voltage capability, and a magnetic impeller. They seamlessly fit into confined spaces, ensuring durability, versatile power, and enhanced reliability with advanced impeller technology.

MAGNETIC DRIVE PUMPS:



PM250L



PM500L



PM1000A



PM1000L



**COMPACT
DESIGN**



**RUST FREE
PROTECTION
COAT**



**IGNITION
PROTECTED**



**MAGNETIC
IMPELLER**



**WATER
COOLED**



**THERMALLY
PROTECTED**

CENTRIFUGAL PUMPS:



PCX1500



PCX2100



PCX3000



PCX3600



**COMPACT
DESIGN**



**RUST FREE
PROTECTION
COAT**



**STAINLESS
STEEL
SHAFT**



**BRONZE
IMPELLER**



**DUAL
VOLTAGE**



**TOTALLY
ENCLOSED
FAN COOLED**

10 - MARINE PUMPS

MODEL	GALLONS PER HOUR (GPH)	VOLTAGE	INPUT	OUTPUT	IMPELLER	PART NUMBER	MAP*
PM250L	300 GPH	115V	3/4 MPT	1/4 MPT	1.8 in	40115P	€245.99
PM250LH	300 GPH	230V	3/4 MPT	1/4 MPT	1.8 in	40215P	€260.99
PM500L	500 GPH	115V	3/4 FPT	1/2 MPT	1 1/8 in	40111P	€270.99
PM500LH	500GPH	230V	3/4 FPT	1/2 MPT	1 1/8 in	40211P	€299.99
PM1000A	1000 GPH	115V	1 FPT	1/2 MPT	1 1/8 in	40112P	€335.99
PM1000AH	1000 GPH	230V	1 FPT	1/2 MPT	1 1/8 in	40212P	€359.99
PM1000L	1000 GPH	115V	1 FPT	1/2 MPT	1 1/8 in	40113P	€759.99
PM1000LH	1000 GPH	230V	1 FPT	1/2 MPT	1 1/8 in	40213P	€729.99
PCX1500	1500 GPH - J48	115/230V	1 NPT	3/4 NPT	3.0 in	40011P	€909.99
PCX2100	2100 GPH - J48	115/230V	1.25 NPT	1 NPT	3.5 in	40012P	€959.99
PCX2100	2100 GPH - J56	115/230V	1.25 NPT	1 NPT	3.5 in	40013P	€959.99
PCX3000	3000 GPH - J56	115/230V	1.25 NPT	1 NPT	3.31 in	40014P	€1,079.99
PCX3600	3600 GPH - J56	230V	1.5 NPT	1.5 NPT	4.0 in	40114P	€1,555.99
PCX3600 - 3PH	3600 GPH - J56	230V	1.5 NPT	1.5 NPT	4.0 in	40314P	€1,640.99

10 - MARINE PUMPS

1 - PUMP WET END KIT

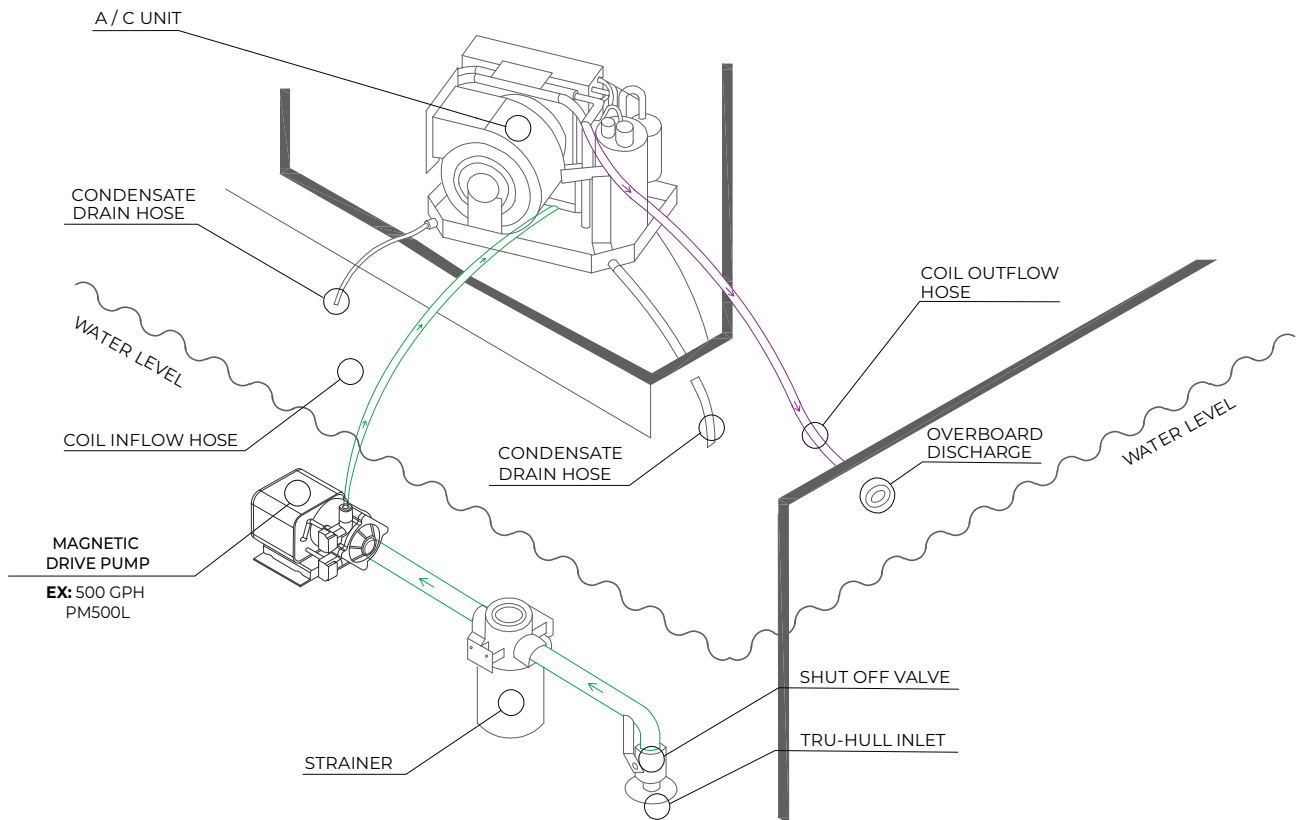
PART NUMBER	DESCRIPTION*	PRICE (USD)
40016P	PM250L - LH	€79.99
40017P	PM500L - LH	€139.99
40018P	PM1000A - AH	€180.99
40019P	PM1000L - LH	€185.99
40020P	1500 GPH - 35066	€39.99
40021P	2100 GPH - 35067	€39.99
40022P	2100 GPH - 35068	€39.99
40023P	3000 GPH - 35065	€39.99
40024P	3600 GPH - 48451	€79.99

2 - PUMP RELAY BOARD

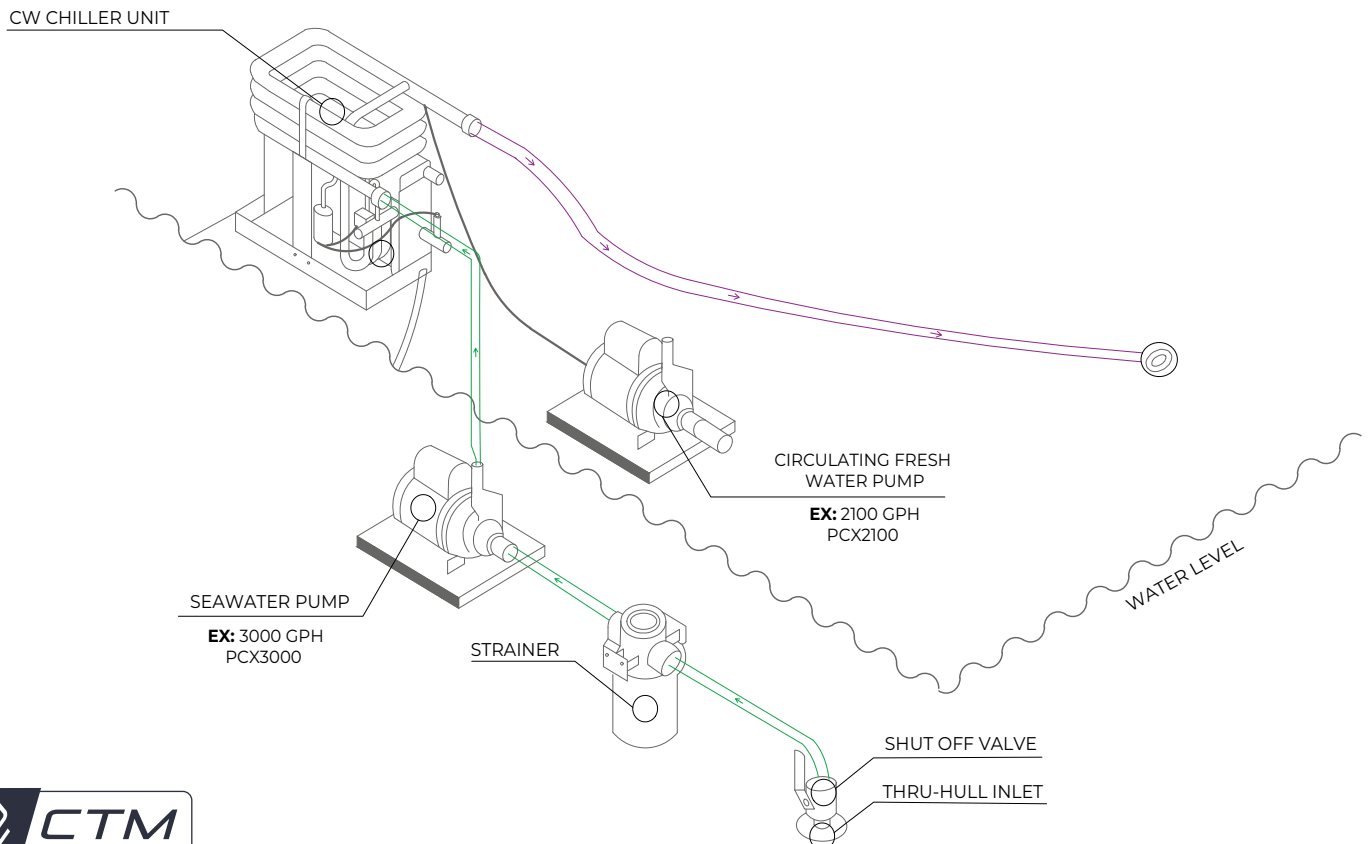
PART NUMBER	DESCRIPTION*	PRICE (USD)
40005C	2 - STATION PUMP RELAY BOARD IN METAL BOX	€329.99
40006C	6 - STATION PUMP RELAY BOARD IN METAL BOX	€365.99

*Pump wet end kits includes everything except motor and base.

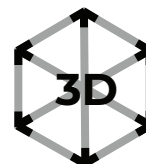
MARINE WATER PUMP INSTALLATION FOR SELF CONTAINED AND SPLIT SYSTEM UNITS



MARINE WATER PUMP INSTALLATION FOR CHILLED WATER SYSTEMS



3D MODELS



To ensure the units fit perfectly in your boat's designated spaces, scan the QR codes below. Each QR code links to detailed 3D models of each model, allowing for a comprehensive view. Simply press the "AR" button on the upper right corner of the page to visualize the units in real size, aiding in your decision-making process.

SELF CONTAINED - CT



CT - 6



CT - 10



CT - 12



CT - 16



CT - 25

SPLIT SYSTEM - CX



CX - 10



CX - 12



CX - 16



CX - 24



CX - 36



CX - 48

EVAPORATOR - EV



EV - 6



EV - 8



EV - 10



EV - 12



EV - 16



EV - 24

3D MODELS

CHILLER SYSTEM - CW



CW - 24



CW - 36



CW - 48



CW - 60



CW - 72

AIR HANDLER - AH



AH - 6



AH - 8



AH - 10



AH - 12



AH - 16



AH - 24

PUMPS



PM500



PM1000A



PCX1500



PCX2100



PCX3000



PCX3600

REFRIGERATORS & FREEZERS



CRU - 35 - SS



DRF - 65 - SS

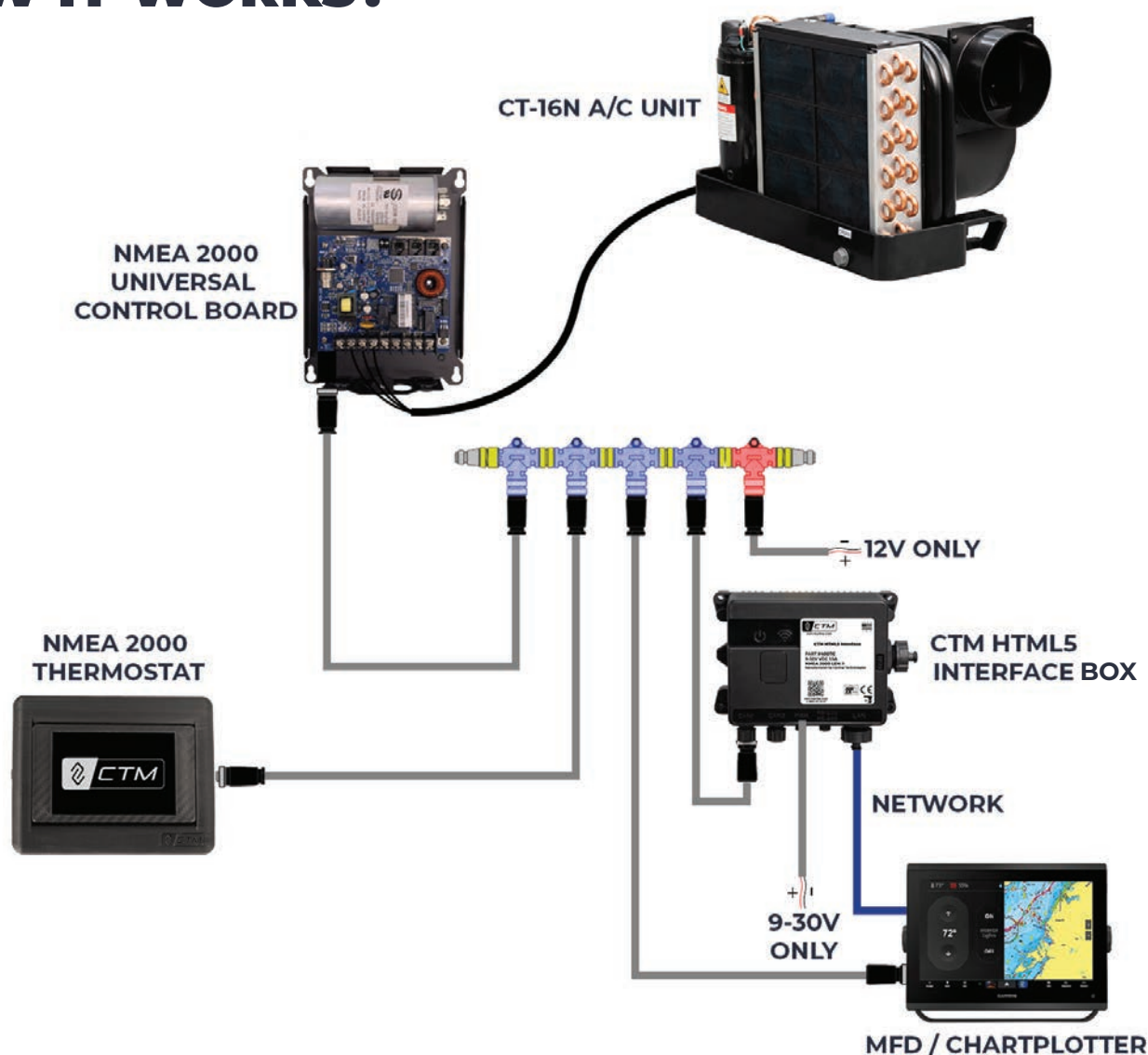


DRF - 85 - SS



VRF - 260 - SS

NMEA 2000 NETWORK FOR MARINE A/C UNITS HOW IT WORKS?



Our **NMEA 2000** compatible unit, enhancing marine HVAC comfort and control.

- CTM Easycool 3.5 in Touchscreen Display with Bluetooth and Wi-Fi connectivity.
 - Remote monitoring and control via companion Apple and Android apps.
 - Control over operating modes, power, fan speed, and operation adjustments.
 - Real-time monitoring of inlet temperature and humidity.
- Compatibility with Garmin Empirbus, OneHelm, and Raymarine YachtSense for full embedded control.
 - HTML5 MFD Interface compatible with all major MFD manufacturers.
 - Single-display control of multiple HVAC units from the helm.
 - Off-vessel remote operation via companion apps.
- NMEA Manufacturer Approved, using the NMEA 2000 HVAC Control standard PGN.
- Retrofit kit available to upgrade older SMX-controlled A/C systems with modern connectivity.

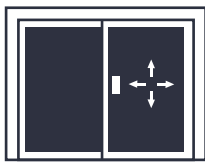
UPCOMING PRODUCTS / SUMMER 2025

REFRIGERATORS & FREEZERS

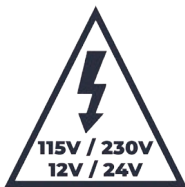
CTM Marine Refrigerators and Freezers combine quiet operation and compact design with rust-free protection for longevity in marine environments. Featuring dual voltage for convenience and stainless steel doors for durability, they offer a modern aesthetic that fits into tight spaces. The innovative sliding door mechanism enhances functionality, making them an ideal choice for efficient and reliable marine refrigeration.



QUIET



**SLIDING
DOORS**



**DUAL
VOLTAGE**



**COMPACT
DESIGN**



**RUST FREE
PROTECTION
COAT**

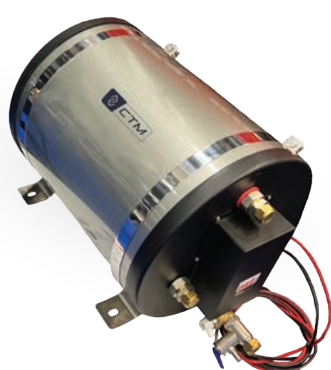
MODEL	ITEM DESCRIPTION	PART NUMBER	MAP*
CRU-35-SS	STAINLESS STEEL FRIDGE- 1.2 cu.f (35 LITERS)	91001R	€909.99
DRF-65-SS	STAINLESS STEEL DRAWER FRIDGE - 2.3 cu.ft (65 LITERS)	93001R	€1,459.99
DRF-85-SS	STAINLESS STEEL DRAWER FRIDGE - 2.3 cu.ft (65 LITERS)	94001R	€1,485.99
VRF-260-SS	STAINLESS STEEL FRIDGE - 8.1 cu.f (230 LITERS)	98001R	€1,839.99

***MAP = Minimum Advertise Price (Units cannot be ADVERTISED at a lower price).
Failure to follow MAP Policy will result in the suspension of the account**

UPCOMING PRODUCTS / SUMMER 2025

WATER HEATERS

Introducing our Marine Water Heaters, engineered for superior performance and durability in marine environments. Designed with a corrosion-resistant stainless steel tank, these water heaters ensure long-lasting reliability while delivering hot water efficiently on board. Available in multiple capacities; 2, 8, 12, 16, and 20 gallons and in both 115V / 850W and 230V / 850W options, they provide flexibility to meet the needs of various vessel sizes. With rapid heating capabilities and energy-efficient operation, our marine water heaters guarantee a consistent supply of hot water, enhancing comfort and convenience for every journey at sea.



QUIET



**STAINLESS
STEEL TANK**



**115V
OR 230V**



**COMPACT
DESIGN**



**RUST FREE
PROTECTION
COAT**

MODEL	CAPACITY	VOLTAGE	PART NUMBER	MAP*
WH-2	2 Gal - 6 Liters	115V / 850W	81101Y	€515.99
WH-2H	2 Gal - 6 Liters	230V / 850W	81201Y	€515.99
WH-8	8 Gal - 30 Liters	115V / 850W	82101Y	€819.99
WH-8H	8 Gal - 30 Liters	230V / 850W	82201Y	€819.99
WH-12	12 Gal - 45 Liters	115V / 850W	83101Y	€855.99
WH-12H	12 Gal - 45 Liters	230V / 850W	83201Y	€855.99
WH-16	16 Gal - 60 Liters	115V / 850W	84101Y	€909.99
WH-16H	16 Gal - 60 Liters	230V / 850W	84201Y	€909.99
WH-20	20 Gal - 80 Liters	115V / 850W	85101Y	€995.99
WH-20H	20 Gal - 80 Liters	230V / 850W	85201Y	€995.99

*MAP = Minimum Advertise Price (Units cannot be ADVERTISED at a lower price).

Failure to follow MAP Policy will result in the suspension of the account

PART NUMBER EXPLANATION

2ND DIGIT DEPENDING ON UNIT TYPE WILL SPECIFY BTU'S:

SELF-CONTAINED / SPLIT UNITS

- 0 - All BTU'S
- 1 - 6,000 BTU'S
- 2 - 10,000 BTU'S
- 3 - 12,000 BTU'S
- 4 - 16,000 BTU'S
- 5 - 24,000 BTU'S
- 6 - 36,000 BTU'S
- 7 - 48,000 BTU'S
- 8 - 60,000 BTU'S
- 9 - 72,000 BTU'S

AIR HANDLERS / EVAPORATORS

- 1 - 6,000 BTU'S
- 2 - 8,000 BTU'S
- 3 - 10,000 BTU'S
- 4 - 12,000 BTU'S
- 5 - 16,000 BTU'S
- 6 - 18,000 BTU'S
- 7 - 24,000 BTU'S
- 8 - 36,000 BTU'S

REFRIGERATORS

- 1 - 1.2 cu.ft / 34 Liters
- 2 - 1.8 cu.ft / 51 Liters
- 3 - 2.3 cu.ft / 65 Liters
- 4 - 3.0 cu.ft / 85 Liters
- 5 - 3.5 cu.ft / 100 Liters
- 6 - 4.2 cu.ft / 119 Liters
- 7 - 4.7 cu.ft / 133 Liters
- 8 - 8.1 cu.ft / 229 Liters

CHILLERS

- 1 - 24,000 BTU'S
- 2 - 36,000 BTU'S
- 3 - 48,000 BTU'S
- 4 - 60,000 BTU'S
- 5 - 72,000 BTU'S

WATER HEATERS

- 1 - 2 GAL - 6 LITERS
- 2 - 8 GAL - 30 LITERS
- 3 - 12 GAL - 45 LITERS
- 4 - 16 GAL - 60 LITERS
- 5 - 20 GAL - 80 LITERS

4TH DIGIT WILL SPECIFY BOARD TYPE:

- 0 - U-BOARD
- 1 - ALL BOARDS
- 2 - DDC CONTROL BOARDS
- 3 - U-BOARD WITH NMEA2000

6TH DIGIT WILL SPECIFY:

1. IF (2) SELF CONTAINED, (3) CHILLER, (5) DIRECT EXPANSION, OR (6) EVAPORATORS, IT WILL SPECIFY MODEL:

- A - AIR HANDLERS
- C - CT MODEL
- E - EC MODEL
- H - EVAPORATORS
- L - LOW VOLTAGE MODEL (12V)
- R - REFRIGERATORS
- W - CHILLERS
- X - DIRECT EXPANSION MODEL
- Y - WATER HEATERS

2. IF (4) PARTS, IT WILL SPECIFY PRODUCT TYPE:

- A - CONTROLS
- B - BLOWERS
- C - CONTROL BOARDS
- D - DRAIN PANS
- E - EVAPORATORS
- F - AIR FILTERS
- G - CABLES
- H - HIGH PRESSURE SENSORS
- I - INVERTERS
- J - ELECTRICAL BOXES
- K - COMPRESSORS
- L - ELECTRICAL COMPONENTS
- M - MOUNTING RING
- N - INSULATED DUCTS
- O - BRACKETS & PLATES
- P - PUMPS
- Q - COIL ASSEMBLY
- R - BLOWER ADAPTERS
- S - SMART STARTS
- T - TEMPERATURE SENSORS
- U - CAPACITORS
- V - REVERSING VALVE
- W - WATER HOSE
- X - HEAT EXCHANGERS
- Y - DRYERS
- Z - SUPPORT PLATES



3RD DIGIT WILL SPECIFY VOLTAGE:

- 0 - DUAL VOLTAGE
- 1 - 115V 50/60 HZ 1 PH
- 2 - 230V 50/60 HZ 1 PH
- 3 - 230V 50/60 HZ 3 PH
- 4 - 115V 50/60 HZ W/ SMART START
- 5 - 230V 50/60 HZ W/ SMART START
- 6 - 12V
- 7 - 24V

1ST DIGIT WILL SPECIFY PRODUCT TYPE:

- 2. SELF-CONTAINED
- 3. CHILLERS
- 4. PARTS
- 5. DIRECT EXPANSION (SPLIT UNITS)
- 6. EVAPORATORS
- 7. AIR-HANDLERS
- 8. WATER HEATERS
- 9. REFRIGERATORS

5TH DIGIT WILL SPECIFY:

1. IF (2) SELF-CONTAINED, (3) CHILLER, (5) DIRECT EXPANSION, OR (6) EVAPORATORS, IT WILL SPECIFY SERIES:

- 1 - FIRST SERIES
- 2 - SECOND SERIES
- 3 - THIRD SERIES

CTM MARINE DEALERS

WHY BECOME A CTM DEALER?

By becoming a CTM dealer, you'll tap into a rapidly expanding marine solutions company, offering boaters top-notch, dependable, and cost-effective products.

Here's what's in it for you:

- Expand your business with a proven line of products in high demand.
- Enjoy competitive pricing and support, boosting your profit margins.
- Benefit from industry-leading customer service, ensuring satisfaction for you and your customers.

Make your mark in the marine industry with CTM, where both dealer happiness and customer satisfaction are our priorities.

APPLY HERE



Real-Time Inventory

Check real-time available inventory and have the ability to back-order items.



Exclusive Dealer Discounts

Enjoy exclusive dealer discounts on all CTM branded products.



Technical Support

Chat with our tech support team about CTM products, troubleshooting, and more.
Phone: +1 (866) 317 5257



Strict MAP Enforced Policy

We make sure our dealers's margins are protected and consistent across the board.

FIND AUTHORIZED DEALERS & DISTRIBUTORS

To ensure the best experience when purchasing CTM products, we strongly recommend working with an authorized CTM dealer or distributor. These dealers have been carefully selected and approved based on their knowledge, reliability, and commitment to customer satisfaction. When you buy through an authorized dealer or a distributor, you'll have access to full product warranty, technical support, and expert guidance before and after your purchase.

Authorized dealers and distributors also stay up to date with the latest CTM product releases, system updates, and installation best practices, ensuring you get the most out of your marine equipment.

FIND US



WHERE TO BUY

For more information about this program, please contact:

E-mail: info@ctm-marine.com

Phone: +1 (866) 317 5257

Post: 10801 NW 33 ST,
Doral, Florida, 33172

NOTES

[illegible]

ctm-marine.com



ctm-marine.com

Doral, Florida, 33172

Phone: + 1 (866) 317 52 57

E-mail: info@ctm-marine.com

Form No. UM-PM1001125