

PRODUCT DATASHEET

**SURFACE
4" DIESEL DEWATERING /
LIGHT-SEWAGE PUMP
IMP4D-18-HCC**



IMPELLR
A TERRACORE COMPANY

SCAN HERE



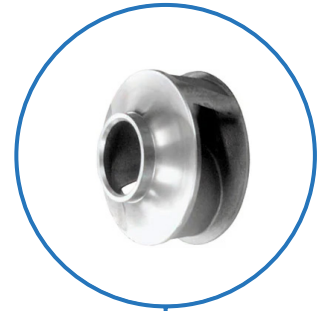
4" DIESEL

Single or 4 point lifting

Durable lifting eyes enable easy transportation and allow the pump to be placed into difficult areas.

Dual Channel Enclosed Impeller

Durable ductile iron dual channel impeller for good solids handling and efficient operation.



18.5kW Stage V Engines

Stage 5 engines for compliance and smooth running. Inter-changeable bundled fuel tank. HVO compatible.



100% Oil-spill free priming system

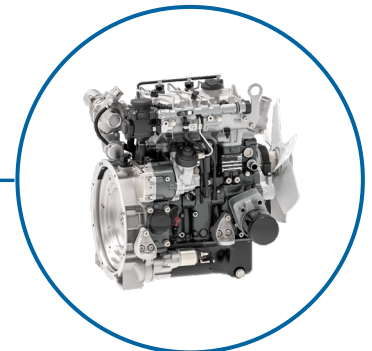
Mechanical priming system. Can quickly prime and re-prime, even from dry conditions.

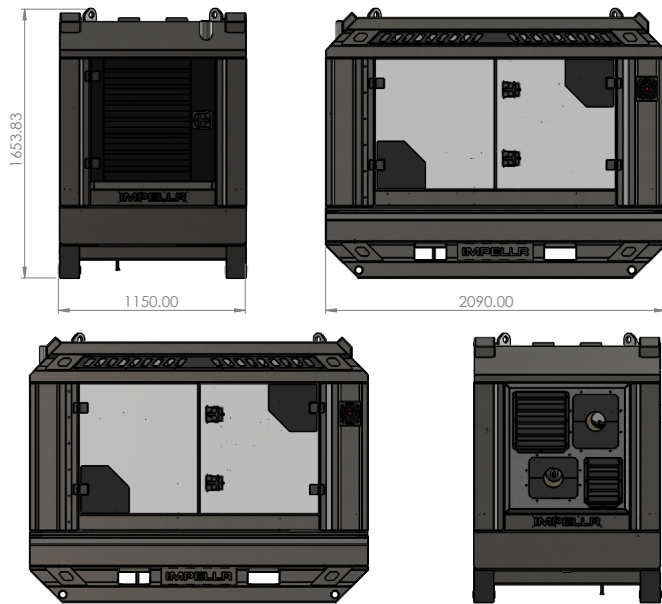
Corrosion free hot dip galvanized canopy

With forklift pockets for easy moving.

Easy Access doors

Made for practical access and easy maintenance of oil glasses, float box, impeller, non-return valve and more.





CONTROLLER FEATURES

CONNEX On-device Controller:

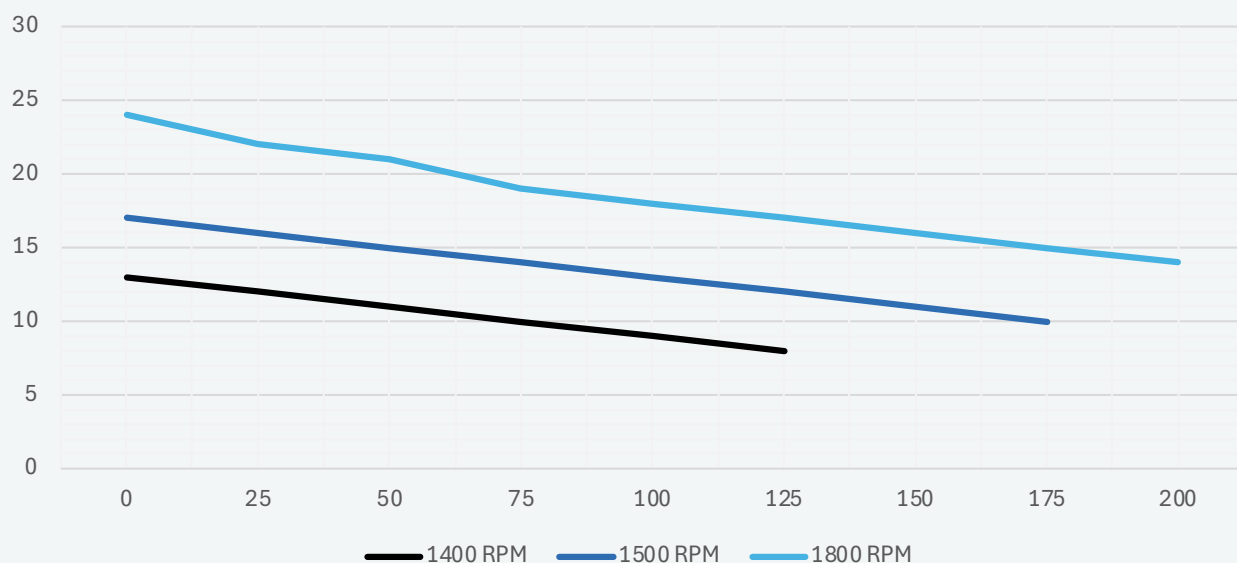
- Auto Start / Stop Sytem
- Switch On / Off
- Tachnometer
- Hour Counter
- Warning Lights
- Two Float Switches
- Support for Automatic operation
- 2 Emergency Stop Buttons

CONNEX Cloud Telematics:

- GPRS - Web Supervisor and App
- Geolocation and Geo-fencing
- Fleet manager
- + Much more. Visit connex.impellr.com

	IMP4D-18-HCC
Primary Use	Dewatering / Light Sewage
Max Flow m3/hr (CFM)	230 (135)
Max Closed Head m (Ft)	30 (98)
Max Operating Head m (Ft)	24 (78)
Best Efficiency	63%
BEP Flow m	158 (42)
BEP Head	21 (98)
Suction Flange mm (inch)	100 (4")
Discharge Flange mm (inch)	100 (4")
Solids Handling mm (inch)	76 (3")
Impeller Type	Semi Open Channel 2 blade
Impeller Material	Ductile Iron
Volute Material	Ductile Iron
Pump Shaft	Stainless Steel 17-4PH
Speed RPM	1400-1750
Priming System	Mechanical Drive Diaphragm Style
Discharge Check Valve	Swing Check Type
Vacuum prime m3/hr (CFM)	85 (50)
Vacuum Lift m (Ft)	8.5 (27)
Engine Type and Model	Hatz
Number of Cylinders	3
Engine Cooling System	Water Cooled
Emmisions Standard	Stage V
Exhust After Treatment	None
Fuel Type	Diesel (HVO)
Service Intervals Hrs	500
Fuel Tank Size - Ltr (USG)	300
Fuel Consumption Ltr/Hr (USG/Hr)	2.5lt/hr
Dimensions (LxWxH) - MM (inch)	2400x1150x1980 (95x45x78)
Dry Weight - Kg (Lbs)	NA
Wet Weight - Kg (Lbs)	NA
Warrentee Period	Std 12 Months Optional 3-year extended
Crane Lift Facility	YES
Fork Lift Facility	YES
Stackable	YES x3

PERFORMANCE CURVES



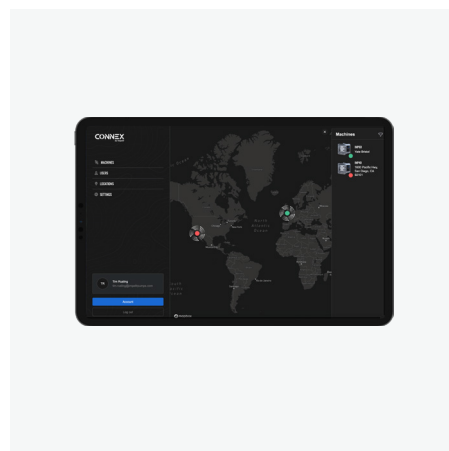
Trailer Mountable

A range of road and site-tow-spec trailers are available with optional hose and equipment carriers. These trailers are ideal for fast deployment of pumping equipment.



Stackable

Where storage is tight the Impellr pumps can be stacked 3 high.



Smart Software

Our CONNEX software platform allows you to manage and control your pumps remotely, with telematics and more.