



Product Portfolio

For the New Generation of Business

www.addpay.africa

E1 Lite

EMV Mini ECR



Quad-core at 2.0GHz



6.745" large screen



Android 13



Customer
side second screen



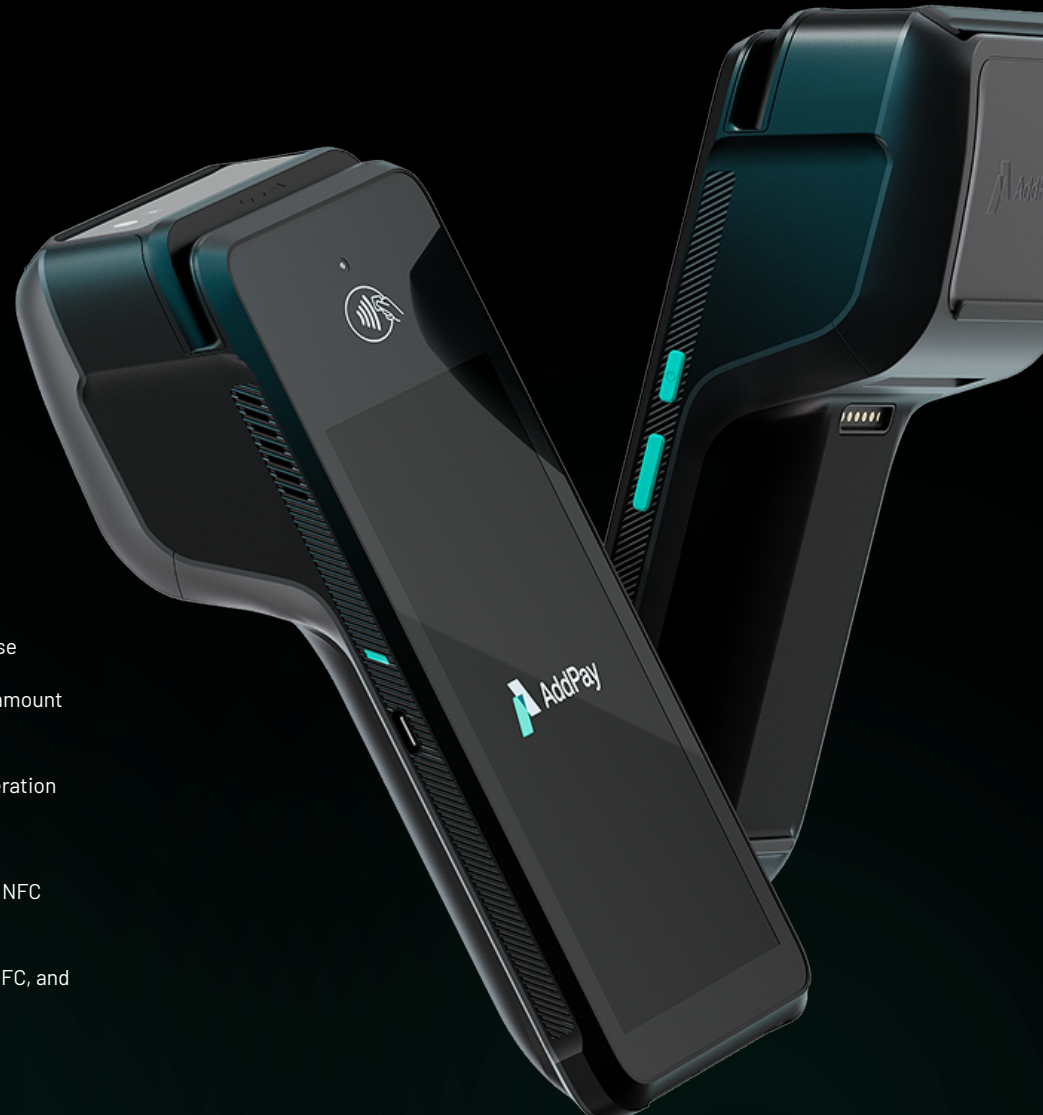
High-speed
thermal printer



Customer-friendly
NFC payment

- 6.745" touch screen with 1600*720 pixels resolution allows for more intuitive use
- The guest display screen equipped on E1 Lite is used to show the transaction amount clearly
- Quad-core at 2.0GHz processor and Android 13 operating system for faster operation
- Fast printing speed up to 80mm/s in virtue of professional thermal printer
- NFC antenna located on the front top of the device ensures customer-friendly NFC payment

Supports diverse payment methods, including IC card, magnetic stripe card, NFC, and QR/barcodes



Technical Specifications



Model Name

P051



Operating System

Android 13



CPU

Quad-core 2.0GHz



Security Processor

MH2101



Memory

2GB LPDDR4X + 32GB eMMC
Optional: 3GB LPDDR4X +
64GB eMMC



Display

Main display: 6.745 Inches (1600*720) IPS
Capacitance, Multi-touch
Second display: Dot matrix screen



Network

2G/3G/4G



WIFI

2.4G/5G, 802.11 a/b/g/n/ac



Bluetooth

Bluetooth5.1, BLE



GPS

GPS/A-GPS, Glonass,
Beidou, Galileo



Camera

Front Camera: 2M FF
Rear Camera: 5M FF
Optional: 13M AF
Flashlight LED: Torch LED 100mA



Fingerprint

Aralek A400-M
(Optional)



Audio

Speaker: 0.8W
Microphone: 1*MIC (Optional)



NFC

1. 13.56MHz
2. Support ISO/IEC 14443 Type
A&B Mifare S50/S70
FeliCa Compliance



Card Reader

MSR: ISO7810-7813, 3 tracks
IC Card: ISO7816



Card Slot

1*Nano SIM +2*PSAM
Optional:
1*Nano SIM + 1*Mini SIM + 1*PSAM
Optional:
1*eSIM + 1*Nano SIM+ 2*PSAM



Button

Power Button /
Multifunction Button



Battery

Removable, 7.2V high
Voltage, 2600mAh, 18650
Optional: Removable, 7.2V
high Voltage, 3350mAh,
18650



Peripheral Ports

Type C USB2.0, High Speed, OTG



Printer

2" High Speed Thermal Printer
Roll Size: 58*40mm
Print Speed: 80mm/s
Laboratory tested



Adapter

Input: AC 100-240V, 50/60Hz
Output: 5V/2A



Accessories

Optional: Professional
High-speed Scanner,
Charging Cradle, Multi-port
Charging Cradle



Environment

Storage temperature: -20°C to 60°C
Operating temperature: -10°C to 55°C
Humidity: ≤95%

Certifications

**EMV Contact L1 / EMV Contactless L1 / EMV Contact L2 / VISA / MASTERCARD / AMEX / DISCOVER / PCI 6.x / TQM /
CE / FCC / CB / IC / ROHS / WEEE**

AddPay Pty Ltd.

Email: sales@addpay.africa **Website:** www.addpay.africa

Head Office: 8 Quantum Street, Technopark, Stellenbosch, Cape Town, South Africa
Contact: +27 21 880 0644

Wiseasy Technology Pte. Ltd.

Email: mk@wiseasy.com **Website:** www.wiseasy.com

Headquarter: 51 Goldhill Plaza #18-03/4, Singapore 308900
China Office: 27th Floor, Air China Tower, No. 36 Xiaoyun Road, Chaoyang District, Beijing, China 100027
US Office: 185 Great Neck Rd, Ste 422, Great Neck, New York 11021, United States