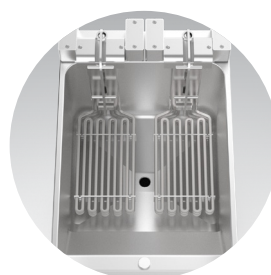
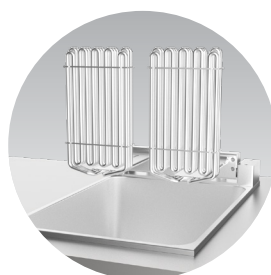
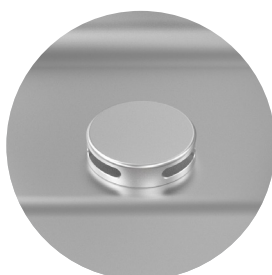
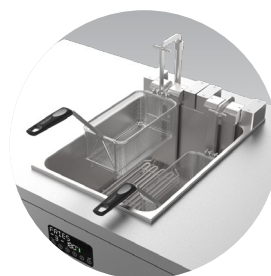
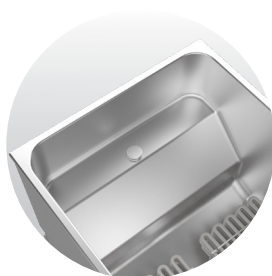


THE CORE SMART 600-E

TECHNICAL DATA SHEET

Informations techniques

Modèle / Type	CORE S600-E
Référence	8760-E
Cuve	25-28 litres
Dimensions*	Voir plan
Panier*	2x 255x285x135
Capacité de production	57-68kg/h
Tension	3N400V
Puissance	22 kW
Courant	32A
Corps de chauffe	2
Plage de température	95°C – 190°C
Indice de protection	-
Poids net	75kg
Câble	5m
Remarque	Livré sans fiche



* Width x depth x height (mm)

More information on valentine.ch

THE CORE SMART 600-E

TECHNICAL DATA SHEET

Features and benefits

- Precise cooking thanks to electronic control with $\pm 1^\circ\text{C}$ accuracy.
- 6 fully customisable programmes: individual adjustment of temperature, time and name for each programme.
- FrySmart Technology™ – Advanced oil-absence detection for enhanced safety and extended heating element lifespan.
- ECO mode: automatic optimisation of consumption during prolonged inactivity, with adjustable time and temperature.
- MELT mode: allows solid fat to be melted gently, without the risk of overheating or burning.
- CLEAN mode: for hot cleaning with water and alkaline degreasers (e.g. Pastigras).
- Integrated Sicotronic interface.
- Integrated smart key for testing the safety system.
- PWM regulator with protection against overheating.
- Removable cartridge-style electrical connection box, simplifying servicing, especially for built-in fryers.
- Maximum insulation to optimise efficiency and heat, with minimal energy loss.
- Tank with cold zone for waste recovery under the heating element, slows down oil degradation.

- Easy cleaning: rounded corners and swivel heating element with locking mechanism.
- Made entirely of stainless steel, solid and durable
- Swiss Made: manufactured in our factory in Romanel-sur-Morges.
- IPX5 rating / 2-year warranty / 20 years of spare parts.

Options

- Automatic basket lifting system (2 positions)
Automatic lift at end of program
- Pump system: filtration through metal filter and microfilter. Daily filtration extends oil life.
- Other voltages on request

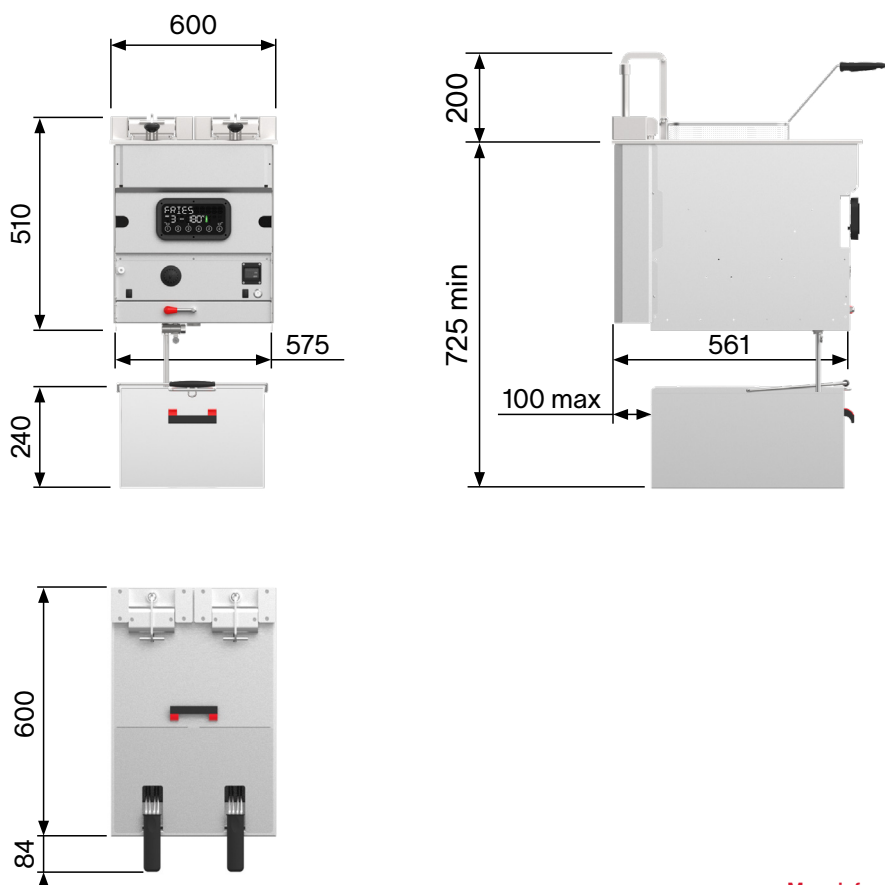
Accessoires

- Microfilter with support
- Fish grid
- Draining rack
- Fine meshed basket

Certificats

- CB, UKCA, UL, SABER, DNV-GL

Technical drawings (mm)



More information on valentine.ch