

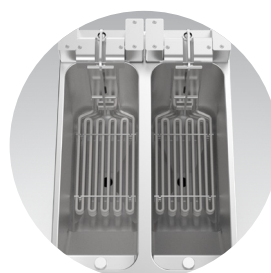
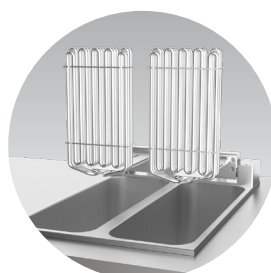
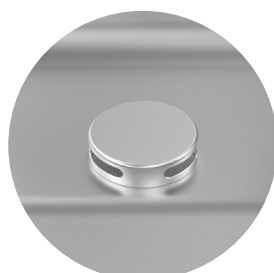
THE CORE SMART 2200-E(T)

TECHNICAL DATA SHEET

Valentine
SWISS MADE

Technical data

Model / Type	CORE S2200-E	CORE S2200-TE
Reference	8710-E	8715-E
Tank	2x 7-8 litres	2x 7-8 litres
Dimensions*	See drawing	See drawing
Basket	2x 158x285x135	2x 158x285x135
Production capacity	38-46kg/h	46-54kg/h
Voltage	3N400V	3N400V
Heating power	2x 7.2 kW	2x 9 kW
Current	20A	26A
Heating element	2	2
Temperature range	95°C – 190°C	95°C – 190°C
Protection index	-	-
Net weight	59kg	59kg
Power cable	2x 5m	2x 5m
Remark	Supplied without plug	Supplied without plug



* Width x depth x height (mm)

More information on valentine.ch

THE CORE SMART 2200-E(T) *Valentine*[®]

SWISS MADE

TECHNICAL DATA SHEET

Features and benefits

- Precise cooking thanks to electronic control with $\pm 1^\circ\text{C}$ accuracy.
- 2x 6 fully customisable programmes: individual adjustment of temperature, time and name for each programme.
- FrySmart Technology™ – Advanced oil-absence detection for enhanced safety and extended heating element lifespan.
- ECO mode: automatic optimisation of consumption during prolonged inactivity, with adjustable time and temperature.
- MELT mode: allows solid fat to be melted gently, without the risk of overheating or burning.
- CLEAN mode: for hot cleaning with water and alkaline degreasers (e.g. Pastigras).
- Integrated Sicotronic interface.
- Integrated smart key for testing the safety system.
- PWM regulator with protection against overheating.
- Removable cartridge-style electrical connection box, simplifying servicing, especially for built-in fryers.
- Maximum insulation to optimise efficiency and heat, with minimal energy loss.
- Tank with cold zone for waste recovery under the heating element, slows down oil degradation.

- Easy cleaning: rounded corners and swivel heating element with locking mechanism.
- Made entirely of stainless steel, solid and durable
- Swiss Made: manufactured in our factory in Romanel-sur-Morges.
- IPX5 rating / 2-year warranty / 20 years of spare parts.

Options

- Automatic basket lifting system (2 positions)
Automatic lift at end of program
- Pump system: filtration through metal filter and microfilter. Daily filtration extends oil life.
- Turbo (ideal for frying frozen foods)
- Other voltages on request

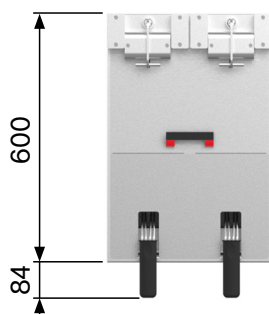
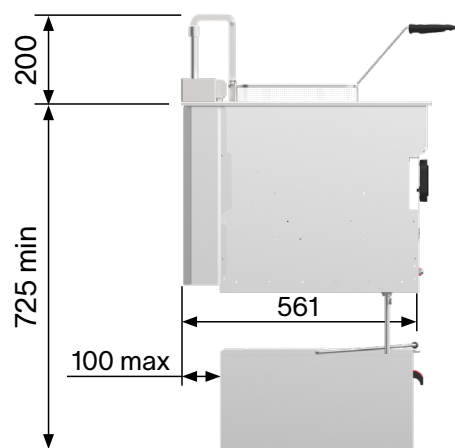
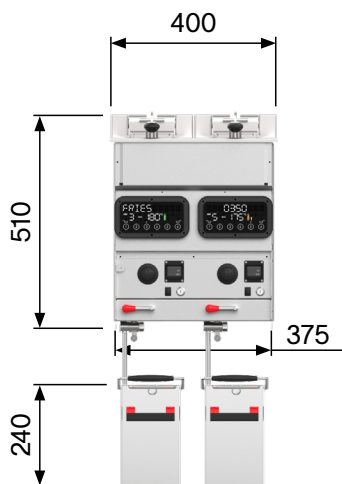
Accessoires

- Microfilter with support
- Fish grid
- Draining rack
- Fine meshed basket

Certificats

- CB, UKCA, UL, SABER, DNV-GL

Technical drawings (mm)



More information on valentine.ch