



JAN 1 - DEC 31

2024

2024

REPORT

Give yourself *fully*.



Because this is *who we are*

We refuse to stand idle while suffering persists. We are called to more—more than comfort, more than complacency, more than watching from a distance. We choose to step into the margins, to give ourselves fully on behalf of the poor and the oppressed, not out of obligation, but because the Gospel compels us.

We run toward those fleeing violence, bringing relief to the refugee. We confront the darkness of human trafficking with unwavering resolve. We stand against extreme poverty, believing that justice and provision should know no borders. And above all, we bring the hope of the Gospel to the unsafe, the unreachable, and the unresourced.

This is not charity; this is calling. It is not optional; it is obedience. We will not settle for passive faith when the world groans for active love. We are hands and feet, voices and advocates, laborers in the fields of restoration.

For the sake of the whole Gospel, we sacrifice our comfort, our security—so that others may know hope, freedom, and life. We will go where others will not. We will love when the world turns away. We will not stop until justice rolls like a river and righteousness like a never-failing stream.

**Because this is who we are. This is what we do.
We give ourselves fully.**

No turning back.



Table of Contents

- ▶ **Lives Fully Given**
Letter from the President | Page 7

▶ **International Programs**
Year In Review | Pages 10-13
Program Overviews & Stories | Pages 14-31

▶ **Financials**
We Run Lean | Page 48
- ▶ **Where We Work**
What Makes a Tough Place? | Pages 8-9

▶ **Domestic Programs & Partnerships**
Year In Review | Pages 32-33
Partnership Overviews & Stories | Pages 34-47



What Every Girl Deserves
Women's Health | Page 26



A Legacy Unsilenced
Church Planting | Page 30



Tough Things Over Time
Miles | Page 36

Featured Stories

Tailor of Dreams
Anti-Trafficking | Page 18



Hope on the Mountains
Refugee Care | Page 22



Because They're Worth It
Business for Good | Page 40



The Power of Going
Churches | Page 44



Rise: A Call to Venture
Monthly Giving | Page 47





LETTER FROM THE PRESIDENT

Lives Fully Given

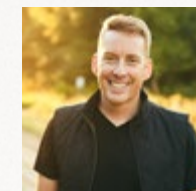
This year has been a remarkable testament to what happens when people give themselves fully to advancing the Kingdom.

This community has shown up in powerful ways—from making room in your budget to give, to mile participants pressing toward a finish line, to church partners moving their communities to engage in the Great Commission, and to business owners expanding their platforms for doing good in the world. Your unwavering support continues to rise, meeting the growing needs and dangers our partners face daily.

Because of your response, lives are being transformed. Families displaced by war are receiving food, safety, and education. Girls rescued from trafficking are healing from trauma and stepping into new beginnings through vocational training. House churches are being planted in remote, mountainous areas where the name of Jesus has never been spoken.

In all of it, the Gospel is advancing, but not without significant cost—some of our partners have laid down their lives to share the hope only found in Jesus. Their legacy is a powerful reminder of what is at stake, and why we must not grow weary.

Thank you for being a part of this work, and for your ongoing sacrifices—running, giving, praying, and believing that unshakable hope fuels transformation in unsafe, unreached, and unresourced places. Know that the impact of your generosity will reach generations.



R-Skoog
Ryan Skoog
PRESIDENT

WHERE WE WORK

We venture to *tough places*

VEN·TURE

/ven(t)SHər/

a risky or daring journey or undertaking

This word embodies what we do and where we go. We strategically work where the Gospel is least known and injustice is most severe—targeting areas that are unsafe, unreached, and unresourced.

► WHAT MAKES A TOUGH PLACE?

UNSAFE

Where the world's greatest injustices occur, including war, human trafficking, extreme poverty, and persecution.

UNREACHED

Where fewer than 2% of the people have heard the hope of the Gospel.

UNRESOURCED

Where less than 1% of all Christian giving goes.

INTERNATIONAL PROGRAMS

Year in Review

Thanks to your generosity, the total number of
individuals served across all international programs
in 2024 was:

133,973



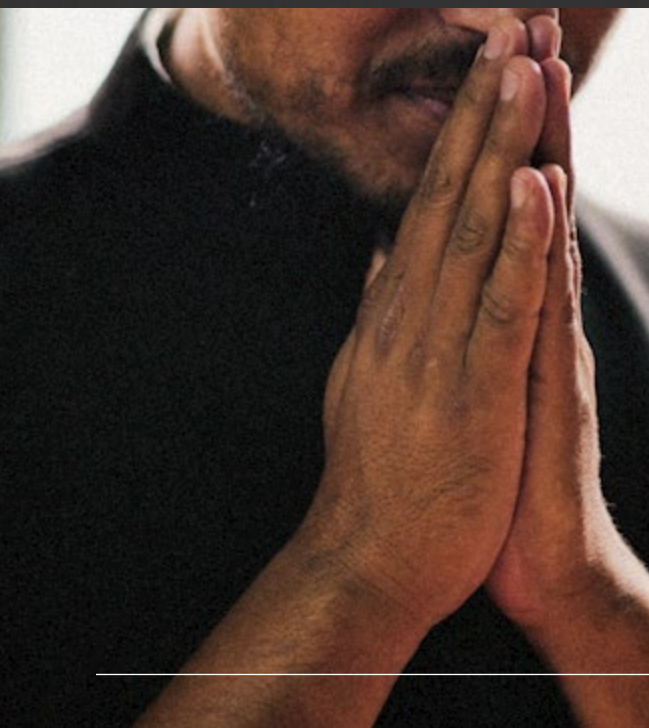


13,190,765
MEALS DISTRIBUTED
TO THOSE IN NEED

600
PROVIDED RESCUE & SAFETY
FROM HUMAN TRAFFICKING

8,337
CHURCHES PLANTED
IN UNREACHED AREAS

14,622
KITS DISTRIBUTED
FOR FEMININE HYGIENE
& TRAINING



PROGRAM OVERVIEW

Making the Gospel known and fighting injustice are inseparable.

Together, they form the intersection where societal change begins, and lasting transformation can occur. This approach, made possible through our courageous partners, is carried out through our four programs.

ANTI-TRAFFICKING

We prevent, rescue, and restore girls from human trafficking by raising awareness, providing safe housing and vocational training, conducting rescues, and offering holistic care rooted in the hope of the Gospel.

REFUGEE CARE

We provide urgent relief and long-term hope for families displaced by war—addressing immediate physical and spiritual needs while equipping them to begin rebuilding their lives.

WOMEN'S HEALTH

We support marginalized women with feminine hygiene kits, health education, and skills training in small business, farming, and leadership—helping them build independence, confidence, and the agency to shape their own futures.

CHURCH PLANTING

We courageously share the Gospel, engaging in multiplicative disciple making and church planting amongst unreached people groups—leading to widespread community transformation that has a generational impact.





Anti-Trafficking

In Nepal, thousands of young women and girls are targeted by traffickers every year due to extreme poverty, lack of job opportunities, and an oppressive caste system. For these vulnerable girls, the threat of being sold into slavery is a daily reality.

Our anti-trafficking program is built around:

- ▶ **PREVENTION**
- ▶ **RESCUE**
- ▶ **RESTORATION**

600

PROVIDED RESCUE & SAFETY

FROM HUMAN TRAFFICKING

7,426

COUNSELED

ABOUT HUMAN TRAFFICKING

3

BORDER STATIONS

OPERATING IN NEPAL



ANTI-TRAFFICKING

Tailor of Dreams



SCAN THE QR CODE TO
SEE HER STORY

Growing up in extreme poverty, Sarmila owned just one outfit. Trapped by hardship and the rigid constraints of a caste system, a better life seemed like a distant dream. Yet, her curiosity and passion for design began to form.

She was captivated by flowing dresses—the way they danced with movement, how seams and stitches transformed fabric into something beautiful. With no resources to her name, Sarmila scavenged through piles of trash, collecting discarded scraps in hopes of crafting her own creations.

At 14, tragedy struck. Sarmila's world collapsed when her father killed her mother, leaving her orphaned and alone. Nearing the end of her education, she worried she'd have to beg on the streets to survive or worse—all into the hands of traffickers.

But hope arrived when Sarmila graduated from grade 10. One of our partners welcomed her into a safe house, offering her a chance to dream up a new future.

Sarmila is thriving in advanced tailoring classes, channeling her creativity into award-winning designs—like a stunning dress crafted entirely from newspaper. Beyond her skills, she's finding deeper transformation: healing from past trauma and embracing God's love in ways she never thought possible.

A young girl with dark hair, wearing a red patterned dress with a large red bow, is sitting on the ground and filling a white bowl with water from a blue public water tap. She is looking off to the side with a slight smile. The background is blurred, showing other people and a dirt path.

Refugee Care

Myanmar (Burma) has endured violent conflict for over 60 years. Since the 2021 coup, airstrikes and ground attacks carried out by the junta have displaced over 2.7 million people. Today, nearly 20 million people need humanitarian aid to survive.

In the face of incredible danger, Venture partners continue to provide urgent relief and the hope of the Gospel to those displaced by war.

12.4M

MEALS DISTRIBUTED
TO FAMILIES DISPLACED BY WAR

642

CHILDREN SERVED
THROUGH EDUCATION &
DEVELOPMENT PROGRAMS

46

SELF-SUFFICIENT FARMS
OPERATING AMONG REFUGEES

Hope on the Mountains

In the remote mountain regions of Myanmar, children are running for their lives.

Many have watched their villages burn, seen their parents taken or killed, and fled into the jungle with nothing. Alone, afraid, and often malnourished, they survive in hiding, unsure if help will ever come. Some eventually find their way to overcrowded monasteries, where monks offer what they can—but the need far outweighs the resources.

During a recent mission, one of our partners reached one of these remote areas with much-needed food. As meals were served, children who had gone days without anything to eat received

their first full meal in weeks. Hunger was replaced with relief. And a simple meal, made possible by your support, became something more—a reminder that they are not forgotten.

This is just one story among thousands.

In 2024, thanks to your generosity, 12.4 million meals were provided to people displaced by war. And with every meal, a message was delivered: you are seen, you are loved, and you are not alone.

"For many children, it was their first full meal in weeks. That meal, made possible by you, was more than food—it was *hope*."

-VENTURE PARTNER



Women's Health

In many impoverished areas, cultural stigmas around women's periods and a lack of autonomy leave women vulnerable to exploitation and abuse. We provide feminine hygiene kits, health education, and training resources to help restore dignity, build confidence, and share the hope of the Gospel—so women can reclaim agency over their bodies and their futures.

14,622

KITS DISTRIBUTED

FOR FEMININE HYGIENE
& TRAINING



WOMEN'S EMPOWERMENT

What Every Girl Deserves

In many communities across Nepal, periods are taboo. For girls already marginalized by caste and poverty, this cultural stigma becomes more than an inconvenience—it becomes a barrier to education, confidence, and simply being a kid.

Nisha is a 14-year-old who just wanted to run and play with her friends at school. But without access to proper hygiene products, play sometimes felt out of reach.

Each month became a discouraging reminder of what she lacked. Her family, already

struggling to make ends meet, couldn't afford to buy her the products she needed.

Then, Nisha met one of our incredible partners who gave her a reusable hygiene kit and training. Nisha learned practical ways to care for her body, and everything began to shift.

Now, Nisha plays with confidence. The fear and shame that once held her back have been replaced by the freedom to be a kid, and the cost of disposable products no longer burdens her family.

Because of your generosity, our partners are able to reach girls like Nisha. Her story is one of 14,622 girls and women who received feminine hygiene kits and training last year. Now, they're gaining confidence and freedom to live as they were meant to.



Church Planting

Systemic injustice prevails in unsafe, unreached, and unresourced communities—places where generational lies and societal stigmas have long distorted power structures and suppressed people’s worth and purpose. But when our partners plant a church in these places, it becomes a source of transformation. As people hear about a God who loves them and overcame death to save them, they begin to confront the lies that have held them hostage. Their view of themselves and others shifts. The Gospel restores dignity, protects the vulnerable, and brings lasting hope.

That’s why we plant churches:

- ▶ Where fewer than 2% of the people have heard the hope of the Gospel.
- ▶ Where less than 1% of all Christian giving goes.
- ▶ Where Christians face extreme persecution and poverty.

8,337

CHURCHES PLANTED
IN UNREACHED AREAS

1,156

FARMERS EQUIPPED
THROUGH CHURCH PLANTING

7

AVERAGE SIZE
OF TYPICAL HOUSE CHURCH

7,408

NEWLY TRAINED LEADERS
IN CHURCH PLANTING

CHURCH PLANTING

A Legacy Unsilenced

In a country where sharing your faith can cost you your life, one of our partners lived with unwavering courage—and paid the ultimate price.

From his home, Kanit* helped plant nearly 100 churches, mentored young leaders, and created room for people to have a place to worship.

His house overflowed with life—students living under his roof, visitors seeking prayer, and a community growing in faith. Despite repeated government warnings, he continued to share the Gospel boldly.

But his impact didn't go unnoticed.

One evening, as he returned from the market with his wife, two men on motorcycles approached under the guise of offering help. He greeted them with kindness. They shook his hand—and then six shots rang out.

He died instantly.

The shock of his death rippled through the community. "We'll meet him in heaven," said a fellow pastor. "We will not stop."

Kanit's legacy lives on—not just in the churches he helped plant but in the faith and resilience he left behind.

Since his death, more than 200 churches have been planted, and thousands more have heard the Good News, led by those continuing the legacy he began.

**Name has been changed to protect identity.*



SCAN THE QR CODE TO
SEE THE STORY

DOMESTIC PROGRAMS & PARTNERSHIPS

Year in Review

Your partnership helped fuel all of Venture's international work. Thanks to our generous donors, Miles participants, Business for Good, and Church Partners, 2024 was a historic year.

The total raised in 2024 was:

\$9,601,741



IMPACT THROUGH MILES

Venture started with a simple invitation: to move from comfortable to less comfortable on behalf of others. Decades later, our community continues to respond in bold, courageous, and sacrificial ways—using their greatest energies to bring hope to tough places.



\$1,027,643

FUNDS RAISED

THROUGH MILES & MOVEMENTS

43

EVENTS & CHALLENGES

LED BY THE VENTURE COMMUNITY

3,442

PARTICIPANTS & VOLUNTEERS

ENGAGED IN MILES & MOVEMENTS

57,380

MILES LOGGED

THROUGH VENTURE MILES APP



Tough Things Over Time

Nate Kemper has tackled some crazy challenges over the years and is nowhere near slowing down. He aims to do one tough thing every year to raise funds and awareness because the need is critical—thousands of girls being trafficked in Nepal need rescue and hope.

Last year, Nate lapped a high school track for 100 miles. Even freezing rain and a nasty blister in the final stretch couldn't hold him back. In 2023, he faced the long night in a 24-hour run, refusing to stop until the morning light. In 2022, Nate ran the Grand Canyon from rim to rim and back again, covering 50 miles of varying elevation.

HOW DOES HE DO IT?

Nate says he can strain his body through these tough challenges partially because he's chosen to do small things consistently, even when it may have been easier not to.

His habit of consistency began with the 2% Challenge in 2019 when he and his wife, Jenny, committed 2% of each day (28 minutes and 48 seconds) to exercise. Altogether, they spent 20,790 minutes, logged over 4,000 miles, and raised over \$34,000 to help rescue girls in immediate danger at the Nepal-India border. To date, Nate has raised over \$100,000 to help rescue girls from human trafficking.

We cannot thank Nate and the Miles community enough for tackling crazy challenges, through small consistency, creating a huge impact for people in tough places.

Nate's Tough Things Through the Years

- ▶ **2019**
Ran 100 Miles on the Superior Hiking Trail
- ▶ **2020**
Ran the Calendar of November
- ▶ **2021**
Ran 1,000 Minutes on Day 1,000
- ▶ **2022**
Rim to Rim to Rim of the Grand Canyon
- ▶ **2023**
Ran 24 Hours Consecutively
- ▶ **2024**
Ran 100 Miles on High School Track



SCAN TO SEE HOW YOU CAN USE YOUR MILES TO MAKE AN IMPACT

Venture launched *Business for Good* as a way to invite businesses to weave generosity into what they do best—building impact through everyday work. This year, dozens of business leaders partnered with us to help fund critical programs in tough places. We're grateful for these creative, purpose-driven partners who are using their work to bring hope to tough places.

\$726,475

FUNDS RAISED

THROUGH BUSINESS FOR GOOD PARTNERS

35

PARTNERING BUSINESSES

MAKING AN IMPACT



BUSINESS FOR GOOD

Because They're Worth It

Brooke wanted to combine her love for business with her desire to make a difference in the world. Her vision for a jewelry business called Purity Pearls sparked after visiting a safe home for girls rescued from trafficking. She planned to use its profits to help girls who were trafficked find rescue, safety, and restoration.

Last year, Brooke dialed up her impact by partnering with Venture's anti-trafficking work along the Nepal-India border, where thousands of girls are deceived or coerced into trafficking every year.

"Venture made it super easy to partner with them, providing testimonies, media, and incredible causes to support," Brooke said. "Because Venture is on the frontlines, in some of the world's hardest and darkest places, my business can partner in bringing the Kingdom of God and light and hope where it's most needed."

Now, whenever customers wear jewelry from Purity Pearls, they can remember they helped fight for the value and protection of girls vulnerable to trafficking—*because they're worth it.*



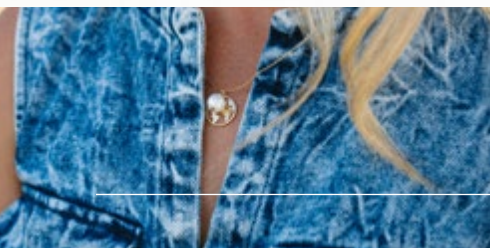
"Because Venture is on the frontlines, in some of the world's hardest and darkest places, my business can partner in bringing the Kingdom of God and light and hope where it's most needed."



BROOKE PARKS
FOUNDER & CEO | PURITY PEARLS



SCAN TO SEE HOW
YOUR BUSINESS CAN
MAKE AN IMPACT



IMPACT THROUGH CHURCHES

Venture has always been committed to coming alongside local churches as they lead their people into an active response to the Gospel. Time and again, we've seen churches step out in faith—meeting urgent needs and planting churches in some of the toughest places on earth.



\$1,262,706

FUNDS RAISED

THROUGH CHURCH GIVING

87

CHURCHES

ACTIVELY PARTNERING WITH VENTURE

21

CHURCH-BASED MILES EVENTS

LED BY CHURCHES



The Power of Going



**Desiree walking toward a border patrol station in Nepal*

Desiree, as the women’s director and head of HR, fosters her church community into passionately building relationships and showing Christ to the world. Because of shared missions, her church has supported Venture’s anti-trafficking program for ten years. She recently saw the impact firsthand during a vision trip to Nepal with a small group of women. Being there completely changed her perspective on the need and her church’s part in the story.

“Venture works with such excellence to bring hope to hopeless situations,” Desiree said. “The quality of work was very evident as I witnessed the care given to a girl on day one of her rescue.

The lifetime of restorative care she receives afterward is breaking the cycle of trafficking. Generations are being impacted.”

Desiree returned from Nepal with a deeper resolve to support the girls at risk. Moved by her experience, her church chose to increase its financial support for the year to bring more rescue, freedom, and hope to girls rescued from trafficking in Nepal.

Venture partners with local churches, inviting them to become part of making the Gospel known and fighting injustice.

“Partnering with Venture has been an incredible blessing because it allows us to be part of both rescuing lives and sharing the Gospel holistically. This past year, I had the opportunity to witness the impact firsthand, and I was deeply moved and grateful to see God at work. Knowing that 100% of donations go directly to the programs makes this partnership even more meaningful.”



DESIREE ST. JOHN
RIVER OF LIFE | COLD SPRING, MN



SCAN TO SEE HOW
YOUR CHURCH CAN
MAKE AN IMPACT



Rise

Join the monthly giving community dedicated to the long fight against injustice and making the Gospel known.

It takes time: for a girl rescued from trafficking to believe she's more than her past; for a war refugee family, devastated by violence, to rebuild; for a woman to break free from cultural stigmas; for the Gospel to transform entire communities.

But while it takes time, change is unfolding. Stories of hope and renewal happen every day—powered by our monthly giving community called Rise.

Join us today.



VENTURE.ORG/RISE

Balance Sheet

| Current Assets | |
|--------------------------------|-------------|
| Total Cash | 4,612,789 |
| Outstanding Donations | 119,402 |
| Other Current Assets | 24,775 |
| Inventory in Transit to Donee | 473,558 |
| Total Current Assets | 5,230,524 |
| Property & Equipment | |
| Furniture, Fixtures, Equipment | 28,001 |
| Technology (Venture Miles) | 322,597 |
| Computers | 5,398 |
| Vehicles | 51,154 |
| Real Estate | 300,000 |
| Accumulated Depreciation | (219,070) |
| Total Fixed Assets | 488,080 |
| Intangible Assets | |
| Technology Assets | 16,500 |
| Total Assets | \$5,735,104 |
| Liabilities & Net Assets | |
| Accounts Payable | 133,896 |
| Accrued Wages | 39,111 |
| Accrued Vacation/Sick | 48,328 |
| Notes Payable | - |
| Promises to Give | 473,558 |
| Total Current Liabilities | 694,894 |
| Equity | |
| Without Donor Restrictions | 2,106,312 |
| With Donor Restrictions | 2,933,898 |
| Total Equity | 5,040,210 |
| Total Liabilities & Equity | \$5,735,104 |

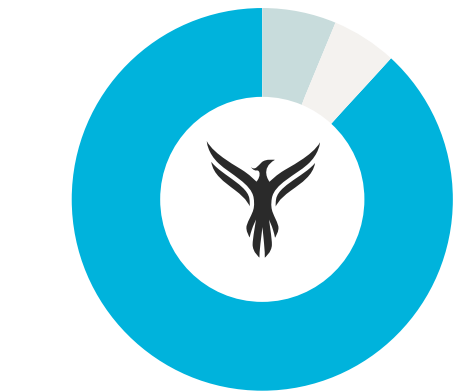
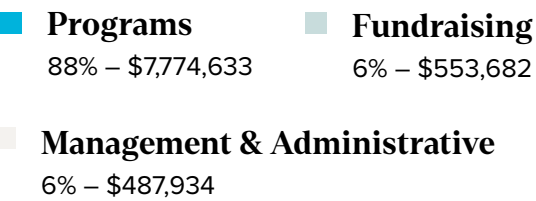
Statement of Cash Flows and Reconciliation is available upon request.

Income Statment

| Income | |
|-----------------------------|-------------|
| Revenue | 6,065,759 |
| In Kind Revenue | 3,535,982 |
| Total Income | \$9,601,741 |
| Expenses | |
| Programs (Int. & Domestic) | 7,774,633 |
| Management & Administrative | 487,934 |
| Fundraising | 553,682 |
| Total Expenses | 8,816,249 |
| Net Income | \$785,493 |

100% Promise

100% of all Administrative Costs and Fundraising are covered by Basecamp.*



*Basecamp is comprised of a generous group of individuals and businesses committed to ensuring the full impact of every donation.

Governing Board

- Brad Ahlm** | Board Treasurer
President & Owner, Conductive Containers Inc.
- Terry Boyton**
President, Yonder Travel Insurance
- Linda Furry**
President, Centrav
- Paul Hurckman**
Executive Director, Venture
- Andrea Lathrop, DMin**
Senior VP, OneHope
- Terry Lijewski**
Principal, Scott Equipment
- Seth Nielsen**
Partner, Legacy Law LLC
- Ryan Skoog**
Co-Founder & President, Venture
- Tim Skoog** | Board Chair
Founder & Chairman, Centrav Inc.
- Aaron Smith**
Co-Founder & Missionary, Venture
- Kristen L. Willard, Ph.D.**
Director of International Programs, Venture

Advisory Board

- Mat Angulo**
Owner, Parable Creative Co.
- John Draz**
VP, Member Experience Insights, United Healthcare
- Brad Godwin**
SVP of Sales & Partnerships, Breaktime Media
- Christina Kee**
Executive Pastor of Ministries, Oaks Church
- Austin Kertesz**
CEO, Pro Acoustics LLC



Thank You

Thank you for partnering with us to bring *hope* to tough places. Your generosity is making an impact.

Top 1%

We are ranked in the top 1% of charities in the nation for fiscal accountability.



100% Promise

100% of your donations go straight to Venture programs. Every dollar equals one *full* dollar, every time.



[VENTURE.ORG/GIVE](https://venture.org/give)



WE EXIST TO BRING HOPE TO TOUGH PLACES.

VENTURE.ORG

^A 511 East Travelers Trail
Burnsville, MN 55337

^T (952) 358-6444

^E info@venture.org

Venture is a 501(c)(3) charitable nonprofit organization registered with the federal government and the state of Minnesota (EIN 41-1720155).