

THE HAMLET HERALD



'Outstanding learning, within a glittering curriculum, where everyone matters'

ISSUE 22 | 7th March 2025

Executive Headteacher: Mrs Claire Purcell | Head of School: Mr Tom Salomonson

Email: office@dulwichhamletjuniorschool.org.uk | Tel: 020 7525 9188/9

NOTE FROM THE HEAD OF SCHOOL

This week has been full of activity, with many moments highlighting the school's focus on learning and curiosity. The sun has brought the children out of classrooms and the standout moment was, of course, World Book Day, a celebration that reinforced our love of reading across the school.

It was a day that reminded us why books are such a powerful part of learning and enjoyment. Days like these reflect what we aim for every day: **a lifelong love of learning**.

We go beyond in our efforts to inspire learning, and World Book Day was just one example of this. Our approach is built around **Opportunities**, **Nurture**, and **Excellence**, and this week has showcased all three in action:

Opportunities – We've captured some fantastic moments from World Book Day, alongside the excitement of our recent footballing success. These experiences show how we encourage our children to explore, engage, and grow beyond the classroom.

Nurture – A love of learning flourishes when children feel supported, both at school and at home. This week over 40 parents attended our Emotional Regulation Strategies Parent Café – check the link for upcoming Cafés and see the return of our Periods workshop too. Please also note our celebration of some Hamleteers whose love of stories have taken them to success at the Herne Hill Literary Festival.

Excellence – Every day, our staff work to stretch, challenge, and inspire our pupils. This week, see how we go beyond in maths, ensuring our

keenest mathematicians are given the support and challenge they need to excel. A few snapshots from the classroom also highlight the fantastic learning taking place across the school. Thank you for being part of this journey. Whether it's through reading, exploring new opportunities, or striving for excellence, we are all working together to inspire that lifelong love of learning.

KEY DATES

Monday 10th March

Y6 Girls' Football Tournament @ JAGS

Tuesday 11th March

Y6 Mexicolore Workshops

Deadline for Mothers' Day Competition

SEND Speech and Language Parent Café 9am

Friday 14th March

Y4 Girls' Football Tournament @ Rosemead

Advance warning: Friday 21st March

Red Nose Day – children wear red

WEEKLY HOUSE POINTS

| | | | |
|--------------|-----------------|----------------|-----------------|
| Ruby Fire | Sapphire Air | Topaz Water | Garnet Earth |
| | | | |
| 328 | 372 | 340 | 377 |

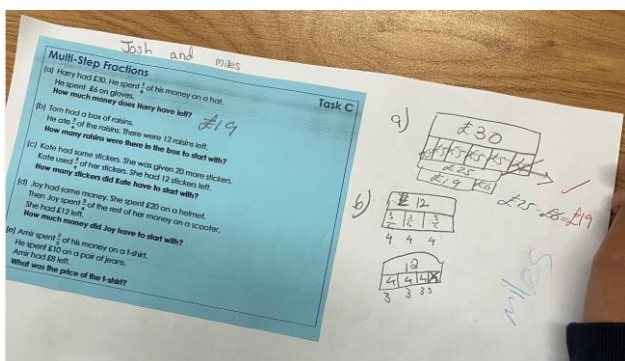
Please also see the wonderful 'Hamlet Herald Junior' written by our House Captains which you can find on Google Classroom.

A WEEK AT THE HAMLET

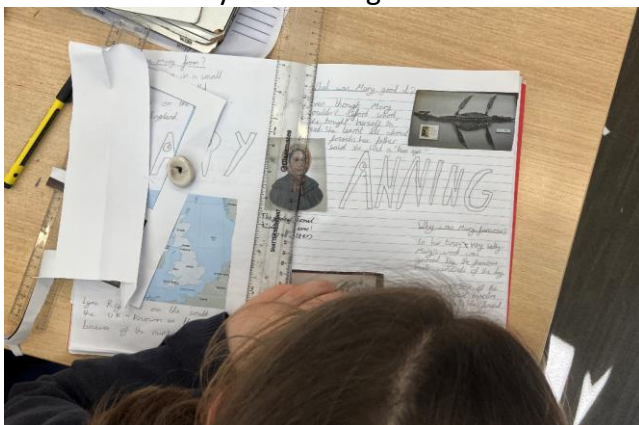
Year 4 checking the progress of their decaying experiment as part of their unit on Teeth.



Year 6 working on their Explicit Problem-Solving strategies in Maths. This evidence-informed curriculum strand is now being trialled in Years 3, 4 and 5.



Year 3 learning about the 'Greatest Ever Fossil Hunter' Mary Anning in Science.



5A taking advantage of the sunny weather to practise their 'ermayzing' class assembly.



GIFT AID

Have you nominated us for Gift Aid yet? In the words of Mrs Doyle, "Ah, go on"

<https://forms.gle/SMdGcHEW7DKNLNrD7>

WORLD BOOK DAY

The day started with a book-themed choir.



We then had a fancy-dress filled Open Classroom.



Teaching staff were overjoyed by the festivities.



A huge thanks to Ms Gorbett Rice, English Lead, and the team for making the day so special! Also, thank you to the Junior Librarians for their ideas and organisational skills.

Every upper school class teamed up with a class in the lower school to share reading time.



In addition to biscuits and a special assembly, we had a special visit from author Sandra Moodie to share her book, "Aminata and the Bag of Seeds." Skyla-Rae in Y3 even stars in this very book!



The day ended with a book swap and we'd like to say a huge thanks to all parents who supported throughout the day and all of you who sorted costumes, whether it was a Thursday morning scramble or planned weeks in advance!

SECONDARY TRANSFER

On Monday evening, our Y6 parents and carers who submitted an on-time application, received a confirmation from eAdmissions with an offer of a secondary school place for their child, together with information on what to do next. We hope that as a family, you receive the news that you are hoping for, but, as with primary admissions, there will be a period of time as places are accepted/declined and waiting lists move.

We politely request that you do not 'sit' on an offered place. This is always an anxious time for children and parents alike and every year we have some of our Hamleteers waiting for places to become available. Please decline a place for a school at your earliest convenience if you are not intending to accept it.

We ask that you keep us informed of the offer you accept, whether that be from the state or independent sector, by completing our [Google form here](#). It's a really quick job! Thanks in advance to you.

HAMLETEER SUCCESS AT LITERARY FESTIVAL

We are thrilled to celebrate the amazing achievement of our very own Eve, who won the **8-11 top prize** at the prestigious **Herne Hill Literary Festival!** Eve's fantastic story, *Zora and the Star Thieves*, captured the judges' imaginations and secured her the top spot in the competition.

Eve was overjoyed to meet acclaimed author **Robin Stevens**, best known for the *Murder Most Ladylike* series, and is pictured here with her award. She described the experience as "inspiring" and loved chatting about writing with one of her literary heroes.

A huge well done as well to our other talented Hamleteers who placed in the competition – **Fyn**, Eve's brother, along with **Aoife and Beatrix** from Year 3. Their creative stories impressed the judges and showcased the fantastic writing talent we have at our school.

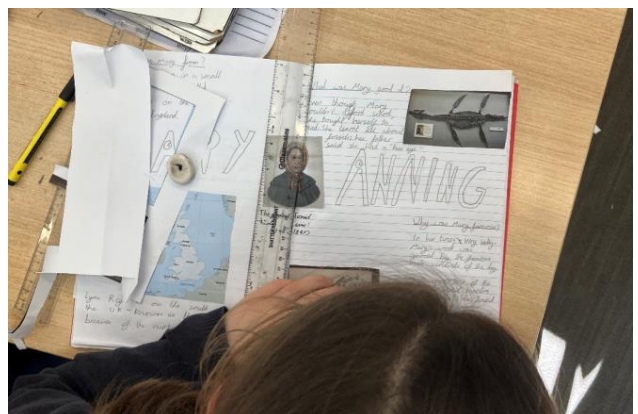


Eve with Author Robin Stevens

We are incredibly proud of all our young writers—keep dreaming big and telling your wonderful stories!

Y6 B-TEAM WIN ALLEYN'S TOURNAMENT

Congratulations to our successful Football Team, victorious at last week's tournament.



EMOTIONAL REGULATION PARENT CAFÉ

This week, we hosted our Parent and Care Café on emotional regulation strategies, the ability to recognise and manage our feelings in a healthy way. Thank you for the engagement and participation; it was a packed session!

This café was centred around the fact that we can't change the way children feel, but we can always help them to manage their responses to how they feel. This is so important in helping children to build positive relationships, to understand themselves and other in the world, and to find balanced ways to respond and cope in stressful situations. Grounding, soothing and calming, and physical and sensory strategies can be used to help children return to their happy, safe place, where they are ready to learn.

As adults, we can support children with their emotional regulation in many ways. Here are just a few examples:

- Notice ways that characters respond to stressful situations in books and discuss this with your children.
- Seek moments to celebrate and praise children for managing their emotions effectively, for example, staying calm when something goes wrong or persevering with something tricky.
- Talk aloud about our emotions and using effective strategies to help us feel better

Please find more details of the presentation on our school website [or by clicking here](#).

CHANGES IN THE CONCEPT OF AUTISM

Autism is often discussed in terms of challenges, but our understanding of what it means to be autistic has changed significantly over time.

This insightful talk – [Changes in the Concept of Autism](#) – by Professor Francesca Happé CBE, explores how scientific research, lived experiences, and societal perspectives have shaped our understanding of autism.

A Broader Understanding of Autism – The way autism is described and diagnosed has evolved, moving away from outdated ideas and towards a more nuanced, strengths-based perspective.

Appreciating Individual Differences – Professor Happé highlights the diversity within the autistic community, challenging stereotypes and helping parents see beyond the traditional 'one-size-fits-all' model.

Recognising Hidden Needs – Many autistic children and young people, especially girls and those masking, may not fit classic diagnostic criteria. This talk explores why some individuals go undiagnosed for so long.

Supporting Your Child Effectively – As research and perspectives change, so too do approaches to support. Understanding these shifts can help parents feel more confident in advocating for their child's needs at home and in school.

Autism is not a fixed concept, and recognising this can empower parents to see their child's unique strengths and challenges in a new light.




PERIOD WORKSHOP MONDAY 31st March

Dulwich Hamlet will be hosting a Periods Workshop at 6pm on Monday 31st March. At this session, which is open to Y4, 5 and 6 pupils accompanied by their parent/carer, we will look in more detail at female puberty and menstruation. We will cover the biology of periods, answer frequently asked questions and look at period products, including sustainable options, and how to use them. Hosted by PSHE Leads from across the Trust, including Mrs Begley, this workshop is a fantastic opportunity to support your child's learning about periods in an accessible and welcoming environment.

To secure your place at the Dulwich Hamlet session, [sign up via this link](#) or use the Dulwich Hamlet QR code in the flier below.

If you already have plans on 31st March, don't worry! The presenting team are visiting other primary schools in the Charter Trust over the next few weeks. See the flier for details and to sign up for an alternative session.



PARENT CAFE'S

THU 27/02: PARENT & CARER CAFÉ: FOCUS ON ABRSM MUSIC EXAMS

MON 03/03: EMOTIONAL REGULATION STRATEGIES

TUE 11/03: SPEECH AND LANGUAGE THERAPY

FRI 28/03: SOCIAL MEDIA AWARENESS

**PLEASE EMAIL THE OFFICE TO SIGN UP OR
CLICK ON HERE!**



LET'S TALK ABOUT PERIODS.

STUDENTS AND PARENTS / CARERS IN YEARS 4, 5 & 6, YOU ARE INVITED TO ATTEND A WORKSHOP ALL ABOUT PERIODS. LET'S TALK...

| | | | |
|---|--|--|--|
|  Lyndhurst 20th March 6pm |  Belham 25th March 6pm |  Dulwich Hamlet 31st March 6pm |  Charles Dickens 1st April 6pm |
|  |  |  |  |

Charter.
chartertrust.org.uk

Better Futures
for Children &
Young People

OPPORTUNITIES FOR CHILDREN TO BE CHALLENGED IN MATHS

The Hamlet offers various opportunities for children to develop their mathematical skills outside the classroom, providing engaging and challenging experiences to inspire young mathematicians.



WONDERMATHS

The Wondermaths Challenge aims to stretch students through stimulating problem-solving tasks that deepen their understanding and encourage creative thinking. It promotes both teamwork and individual challenge, with pupils sharing ideas and listening to one another. After engaging with Wondermaths activities in class, a team is chosen to compete in an exciting tournament, beginning with regional heats and ending in a tense final. Dulwich Hamlet is proud to be entering a team this year.

CHRIST'S HOSPITAL LONDON MATHS CHALLENGE

Christ's Hospital hosts the London Maths Challenge, offering young learners the chance to tackle challenging problems in a competitive yet fun setting. The event aims to build confidence and mathematical thinking. Their bi-annual Maths Challenge for Year 5 students takes place at the historic Guildhall in London, drawing over 200 enthusiastic mathematicians from schools across the region, including Dulwich Hamlet. It's a unique opportunity for students to test their problem-solving skills through challenging tasks in an interactive environment. We are always proud of our Hamleteers who participate.

PARALLEL ACADEMY

Parallel Academy offers a range of interactive maths problems online, designed for students at various levels. The platform provides weekly challenges that promote deeper thinking and problem-solving skills. Year 6 Hamleteers are typically selected for this programme, often enjoying the "shout outs" during webinars, where their ideas are shared by the facilitator.

MISTAKE OF THE MONTH

Dulwich Hamlet's Mistake of the Month competition encourages students to develop their mathematical reasoning by identifying and correcting deliberate mistakes made by their teachers. Each month, a new mistake is displayed around school and uploaded to Google Classroom, with students invited to submit their explanations and corrections. The puzzles are based on NRICH resources, which offer "low threshold, high ceiling" tasks to foster critical thinking and collaboration. NRICH, from the University of Cambridge's Faculty of Mathematics, provides free resources designed to challenge and inspire students.



PROBLEM-SOLVING LESSONS

Our maths mastery approach focuses on deep understanding, fluency, and problem-solving, ensuring all pupils are challenged while building a strong foundation of key concepts for confident progression through the curriculum. Dong Nao Jin exercises enrich learning with targeted activities that reinforce skills and maintain engagement, enabling pupils to apply their knowledge in various contexts. We also use Gareth Metcalfe's Deconstructing Word Questions to develop mathematical reasoning, logical thinking, and resilience. These resources help children break down word problems using the 'slow reveal' technique, visual aids, and bar models to highlight key ideas and address common mistakes. Extension tasks further challenge pupils' thinking.



PRIMARY MATHS CHALLENGE (PMC)

The Primary Maths Challenge (PMC) is a national competition designed to foster a love for mathematics among primary students. It features multiple-choice questions that test problem-solving skills and mathematical reasoning in an engaging and thought-provoking way. We hold an annual competition for both Upper and Lower School, with awards presented during Achievement Assemblies. Through participation, children build confidence, resilience in problem-solving, and a deeper passion for mathematics. The PMC is another way to extend learning beyond the classroom and nurture young mathematical talent.



National Autistic Society coffee mornings



Our guest speaker this month:
Nicole Conradie occupational therapist and owner & director of NC Therapy will be discussing how to support your child's sensory needs

For parents & carers of autistic children on:

Friday 7th March
9:30am
Carnegie Library Hub
Herne Hill, SE24 0AG

And the first Friday of every month
FREE of charge
Open to parents/carers of autistic people of all ages in Lambeth & neighbouring boroughs



Dulwich Youth Orchestra

Easter course at
Alleyn's School
SE22 8SU

Sat 5th - Wed 9th April 2025

9am-1pm with concert at 7pm on final day

For musicians, aged 7 - 18, grade 2 - 8+.
Students are divided into ensembles:

String Ensemble
Wind Band
Senior Strings
Symphony Orchestra

Apply now:

