



SPECIFICATION SHEET

TRADITIONAL PERGOLA



zilux.com



- LED Accent available on four sides of post (optional)
- Patent-pending 8" x 8" post structure design
- Available in 8' and 10' height
- High-definition digital printing
- Low-maintenance DuroClear™ protective coating (no staining, no fading, easy to clean)
- Prewired pole – 24 VDC low-voltage with Easy-access integral drivers
- Lightweight, sturdy construction compared to conventional wood pergolas
- Additional partitions and accessories available (optional)
- Integrated dimmable linear task lighting along joists (optional)
- Concealed cast aluminum base plate included



ORDERING OPTIONS

Model	Posts Accents	Joist Lighting	Joist Color Temperature	Joist length	Beams length	Height	Texture/Color	Driver	Options
TPG									
Traditional Pergola	40K - 4000K	1 - 1 in 4 lit joists	27K - 2700K	8 - 8ft	8 - 8ft	8 - 8ft	XXXX - See texture chart	DIM - ELV/ Triac/0-10V dimmable driver	MS - Motion Sensor
	60K - 6000K	2 - 1 in 2 lit joists	30K - 3000K	10 - 10ft	10 - 10ft	10 - 10ft	CU - Custom design ¹	DMX - DMX Driver for RGBW	RC - GFCI receptacle
	R - Red	3 - Perimeter joists only	40K - 4000K	12 - 12ft	12 - 12ft	CU - Custom Height ¹			
	G - Green	CU - Custom configuration	60K - 6000K	CU - Custom length ¹	14 - 14ft				
	B - Blue	NA - No joist lighting	RGBW - RGB + 6000K ²		16 - 16ft ³				
	Y - Yellow		NA - No Joist lighting		CU - Custom length ¹				
	GB - Glacier Blue								
	NA - No Accent								

¹ Consult factory for custom dimensions configurations.

² Requires DMX driver.

³ Requires six posts.

NOTES

DIMENSIONS



CONSTRUCTION

Aluminum posts, beams and joists assembly made of extruded aluminum, digitally printed aluminum composite panels and cast aluminum. The construction is chemically bonded together to create a robust assembly and a seamless look. The assembly is fully prewired with no visible wire and predrilled in the factory for ease of installation.

JOIST LIGHTING

Optional high efficiency, wet rated LED strip integrated seamlessly into the joists design and provide a smooth and uniform illumination. Acrylic lens is sealed and printed to match the selected texture finish. Light sources are available in static white and RGBW.

LED ACCENTS

Our unique design integrates LED Accents as an option, covered by a printed acrylic diffuser that matches the selected fixture finish. The accents are located on the four corners of the post. The accents color can be specified from a variety of options.

ELECTRICAL

CETL US listed for wet location and certified to CSA STDs C22.2 250.0, 206 and conforms to UL STDs 1598. Surge protected 100-277V 50/60hz Class II integral dimmable drivers located at the base and accessible through hand hole. Dimmable drivers are compatible with ELV, MLV, 0-10V, 1-10V, PWM and wired to a potentiometer in factory. Corner accents are on an independent circuit for individual dimming. Operating temperature is -40°C to 70°C / -40°F TO 158°F.

FINISH

Pretreated primer coated aluminum, then digitally printed with the selected texture or design. Consult the factory for custom textures application or to integrate any logos, indications or other references to your finish. The printed surface is covered with our proprietary DUROCLEAR clear coat, tested in accordance with ASTM standards for the following :



ASTM G155
UV resistance



ASTM D3389
Abrasion Test



ASTM B117
Salt Spray Resistance



ASTM D6578
Graffiti Resistance



ASTM D3359-B
Adhesion Test

BASE PLATE

Internal base plate made of heavy duty cast aluminum. Base plate is anchored directly on mounting surface using factory supplied mounting hardware.

SERVICEABILITY

Drivers are accessible through the hand hole at the base of the post. Access door is flush mounted, digitally printed to match the post finish and secured with anti-theft screws. All electrical components are field serviceable.

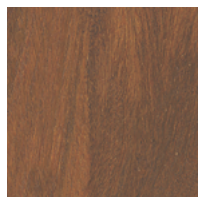
WARRANTY



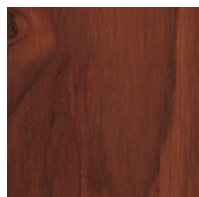
15-YEAR
LIMITED WARRANTY

15 years limited warranty against defects in workmanship on pole and fixture heads and excessive fading of the finish. LEDs are covered for 10 years and Drivers are covered for 7 years. Please refer to the warranty section of our website for additional information. : [zilux warranty](#)

WOOD



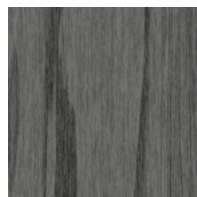
WD-1



WD-2



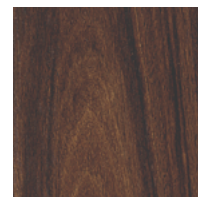
WD-3



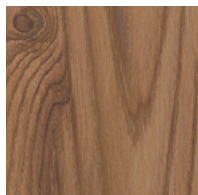
WD-4



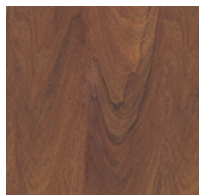
WD-5



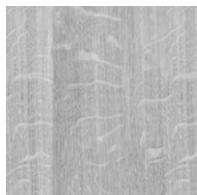
WD-6



WD-7



WD-8



WD-9



WD-10



WD-11



WD-12



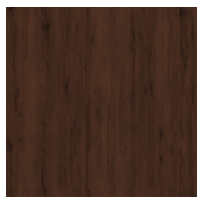
WD-13



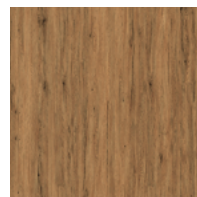
WD-14



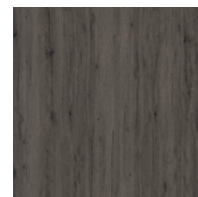
WD-15



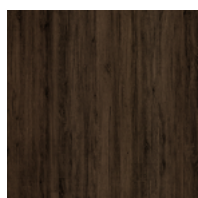
WD-16



WD-17



WD-18



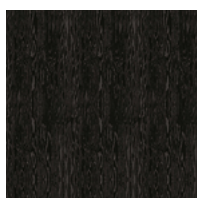
WD-19



WD-20

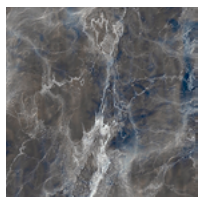


WD-21

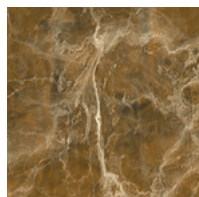


WD-22

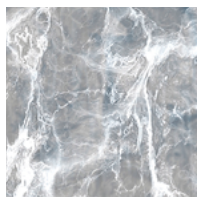
MARBLE



MB-1



MB-2



MB-3

RUST METAL



RM-1



RM-2

DIAMOND

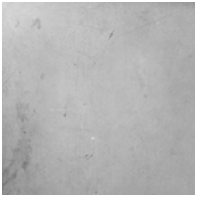


DM-1



DM-3

CONCRETE

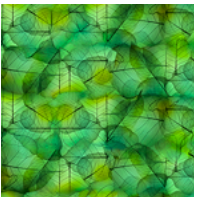


CC-1

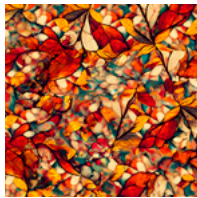


CC-2

VEGETAL

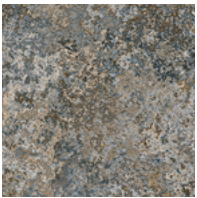


VG-1



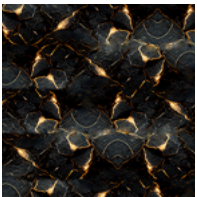
VG-2

STONE



ST-1

MISCELLANEOUS



MISC-1



*Consult us to design your new texture



Online textures