



## SPECIFICATION SHEET

### PARTITION



zilux.com



- LED Accent available on four sides of post (optional)
- Patent-pending 4" x 4" post structure design
- Up to 8' in height
- High-definition digital printing
- Low-maintenance DuroClear™ protective coating (no staining, no fading, easy to clean)
- Prewired post – 24 VDC low-voltage with Easy-access integral drivers
- Choice of CNC cutout patterns – Custom cutting of logo, symbol or other imagery available
- Option to print different textures/colors on each side of partition
- Concealed cast aluminum base plate and painted base cover included



## ORDERING OPTIONS

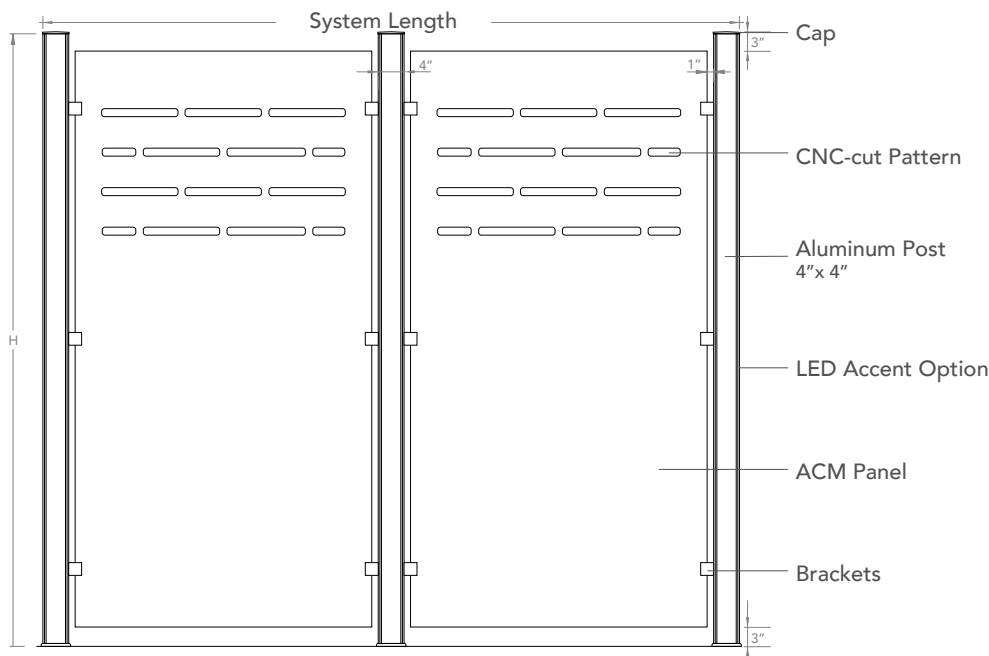
Model	System length <sup>1</sup>	Height	Posts Accents	Accents	Texture / Color	Cut Pattern	Driver
PT							DIM
Partition	CU - Custom length (specify UoM)	3 - 3ft 4 - 4ft 5 - 5ft 6 - 6ft 7 - 7ft 8 - 8ft CU - Custom Height	40K - 4000K 60K - 6000K R - Red G - Green B - Blue Y - Yellow GB - Glacier Blue NA - No Accent	1 - All posts 2 - 1 in 2 posts 3 - First and last posts CU - Custom configuration NA - No Accent	XXXX - See texture chart CU - Custom design (consult factory)	A - Style A B - Style B C - Style C CU - Custom style <sup>2</sup>	DIM - ELV/Triac/0-10V dimmable driver

<sup>1</sup> Individual panel width varies depending on system length and configuration. Maximum panel size is 4'W x 8'H.

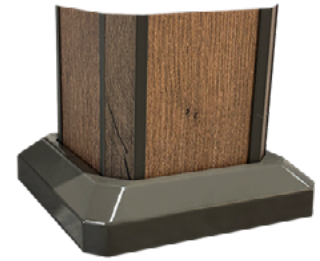
<sup>2</sup> Consult factory for custom designs including logos or patterns.

## NOTES

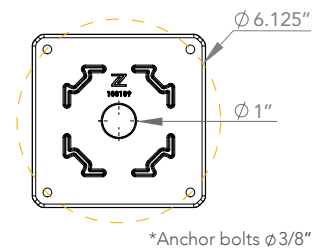
## DIMENSIONS



BASE COVER



BASE PLATE



## CONSTRUCTION

Aluminum posts, assembly made of extruded aluminum, digitally printed aluminum composite panels and cast aluminum. The construction is chemically bonded together to create a robust assembly and a seamless look. Partition panels are 1/4 inch thick aluminum composite with maximum dimensions of 4'x 8'. Panels feature standard or customized CNC-cut designs. The assembly is fully prewired with no visible wire and predrilled in the factory for ease of installation.

## LED ACCENTS

Our unique design integrates LED Accents as an option, covered by a printed acrylic diffuser that matches the selected fixture finish. The accents are located on the four corners of the column. The accents color can be specified from a variety of options.

## ELECTRICAL

CETL US listed for wet location and certified to CSA STDs C22.2 250.0, 206 and conforms to UL STDs 1598. Surge protected 100-277V 50/60hz Class II integral dimmable driver located at the top and accessible through hand hole. Dimmable driver are compatible with ELV, MLV, 0-10V, 1-10V, PWM and wired to a potentiometer in factory. Operating temperature is -40°C to 70°C / -40°F to 158°F.

## SERVICEABILITY

Drivers and all electrical components are field serviceable. Panels and posts can be replaced individually.

## FINISH

Pretreated primer coated aluminum, then digitally printed with the selected texture or design. Consult the factory for custom textures application or to integrate any logos, indications or other references to your finish. The printed surface is covered with our proprietary DUROCLEAR clear coat, tested in accordance with ASTM standards for the following :



ASTM G155  
UV resistance



ASTM D3389  
Abrasion Test



ASTM D6578  
Graffiti Resistance



ASTM B117  
Salt Spray Resistance



ASTM D3359-B  
Adhesion Test

## BASE PLATE

The base plate is made of heavy duty cast aluminum. Base plate is anchored directly on mounting surface using factory supplied mounting hardware. The base cover is made of two cast aluminum pieces with a powder coated painted finish.

## WARRANTY



15 years limited warranty against defects in workmanship on pole and fixture heads and excessive fading of the finish. LEDs are covered for 10 years and Drivers are covered for 7 years. Please refer to the warranty section of our website for additional information. : [zilux warranty](#).

STYLE A



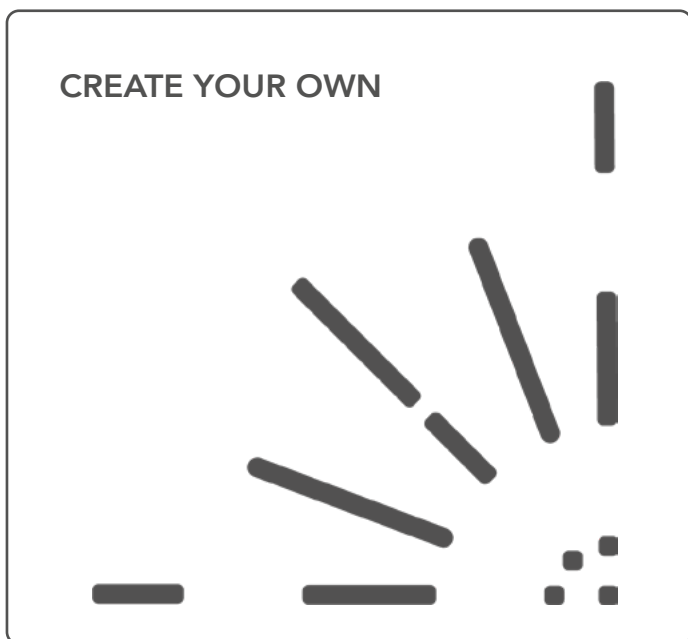
STYLE B



STYLE C



CUSTOM

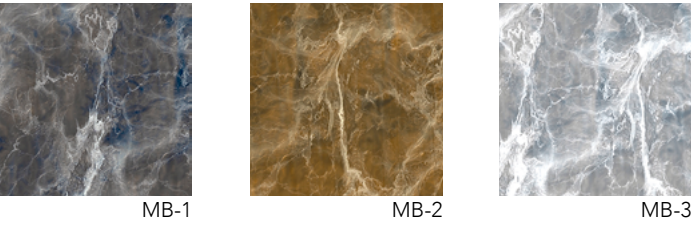




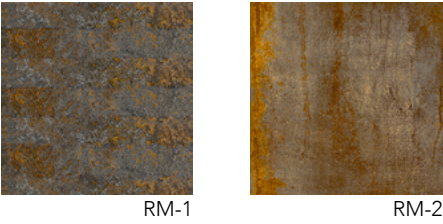
WOOD



MARBLE



RUST METAL



## DIAMOND

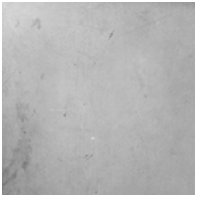


DM-1



DM-3

## CONCRETE

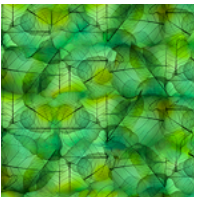


CC-1

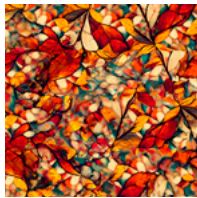


CC-2

## VEGETAL

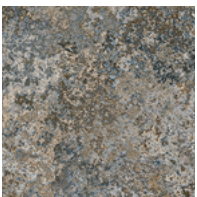


VG-1



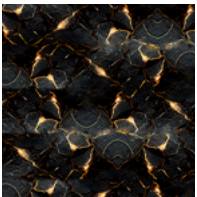
VG-2

## STONE



ST-1

## MISCELLANEOUS



MISC-1



\*Consult us to design your new texture



Online textures