

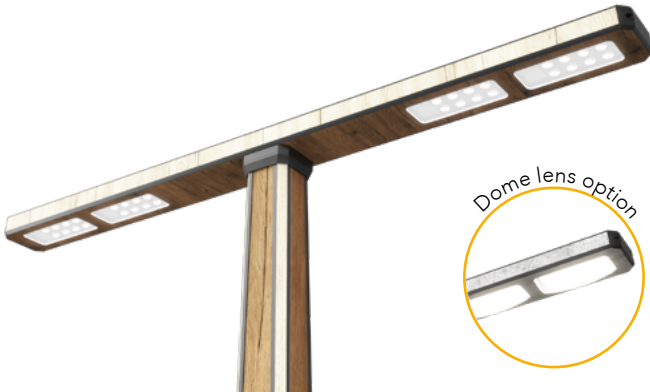


SPECIFICATION SHEET

LAMPPOST - Model T



zilux.com



- Up to 9500 lumens
- Dark sky compliant configurations
- LED Accent available on sides of head and pole (optional)
- Patent-pending pole structure design
- Available in 10' to 19' height
- High-definition digital printing
- Low-maintenance DuroClear™ protective coating (no staining, no fading, easy to clean)
- Prewired pole – 24 VDC low-voltage with Easy-access integral drivers
- Cast aluminum base plate and printed base cover included



ORDERING OPTIONS

Model	Head Accents	LED module ¹	Head Texture /Color	Distribution	Color Temperature	Pole Height	Pole Texture /Color	Pole Accents	Bolt circle	Driver	Options
T										DIM	
Model T	40K - 4000K	10000lm, 72W	XXXX - See texture chart	FII - Flush lens Type II	27K - 2700K	10 - 10ft pole	XXXX - See texture chart	40K - 4000K	A - 13in	Dimmable driver	MS - Motion Sensor
	60K - 6000K		CU - Custom design ²	FIII - Flush lens Type III	30K - 3000K	12 - 12ft pole	CU - Custom design ²	60K - 6000K	B - 9.25in		RC - GFCI receptacle
	R - Red			FV - Flush lens Type V	36K - 3600K	14 - 14ft pole		R - Red			
	G - Green			DII - Dome lens Type II	40K - 4000K	16 - 16ft pole		G - Green			
	B - Blue			DIII - Dome lens Type III	50K - 5000K	18 - 18ft pole		B - Blue			
	Y - Yellow			DV - Dome lens Type V	57K - 5700K	19 - 19ft pole		Y - Yellow			
	GB - Glacier Blue				65K - 6500K			GB - Glacier Blue			
	NA - No Accent							NA - No Accent			

¹ Nominal lumen value.
² Consult factory.
 Dark sky compliant options.

NOTES

CONSTRUCTION

Aluminum tapered pole and head assembly made of extruded aluminum, digitally printed aluminum composite panels and cast aluminum. The construction is chemically bonded together to create a robust assembly and a seamless look. The pole is fully prewired in factory and features a proprietary KwikLock™ tenon and quick connector for ease of installation and serviceability.

LIGHT MODULES

High efficiency, Sealed IP67 LED modules incorporating heat sink for efficient heat dissipation and an impact-resistant lens. The lens is available in two shapes: dome to maximize output or flush for reduced uplight and glare control.

LED ACCENTS

Our unique design integrates LED Accents as an option, covered by a printed acrylic diffuser that matches the selected fixture finish. The accents are located on the four corners of the pole and the position on the head varies according to the model. The accents color can be specified from a variety of options.

ELECTRICAL

CETL US listed for wet location and certified to CSA STDs C22.2 250.0, 206 and conforms to UL STDs 1598. Surge protected 100-277V 50/60hz Class II integral dimmable drivers located at the base and accessible through hand hole. Dimmable drivers are compatible with ELV, MLV, 0-10V, 1-10V, PWM and wired to a potentiometer in factory. Corner accents are on an independent circuit for individual dimming. Operating temperature is -40°C to 70°C / -40°F to 158°F.

FINISH

Pretreated primer coated aluminum, then digitally printed with the selected texture or design. Consult the factory for custom textures application or to integrate any logos, indications or other references to your finish. The printed surface is covered with our proprietary DUROCLEAR clear coat, tested in accordance with ASTM standards for the following:



ASTM G155
UV resistance



ASTM D3389
Abrasion Test



ASTM B117
Salt Spray Resistance



ASTM D6578
Graffiti Resistance



ASTM D3359-B
Adhesion Test

WARRANTY

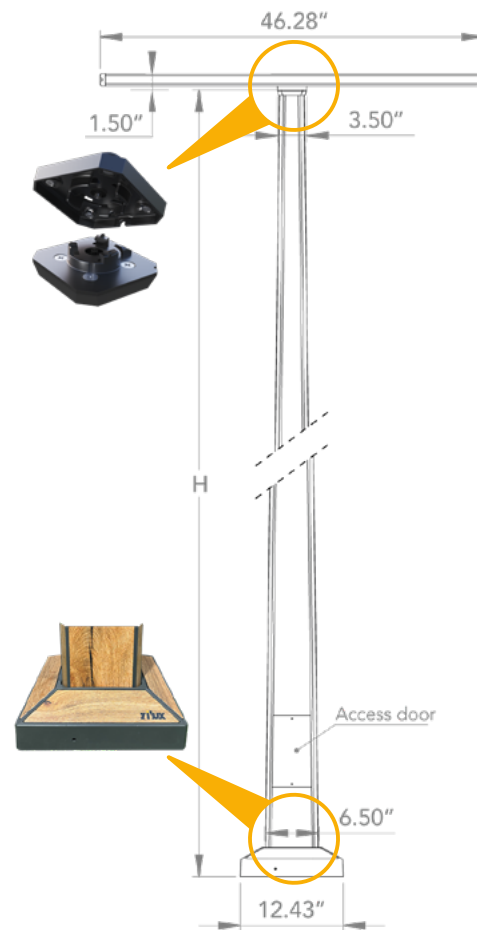


15 years limited warranty against defects in workmanship on pole and fixture heads and excessive fading of the finish. LEDs are covered for 10 years and Drivers are covered for 7 years. Please refer to the warranty section of our website for additional information : [zilux warranty](#)



6330 Zéphirin-Paquet Street - Local 1B
G2C 0M3 Québec QC - Canada
info@zilux.com - 418 842-3222

DIMENSIONS

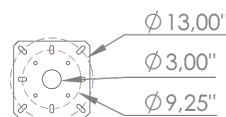


BASE PLATE AND COVER

The base plate and base cover are made of heavy duty cast aluminum. Base plate is anchored using factory supplied mounting hardware. The base cover is made of two pieces and features printed aluminum surfaces that match the selected texture.

BASE PLATE

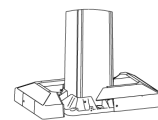
Dualt bolt circles available



*Anchor bolts Ø 1/2"

BASE COVER

Two-piece aluminium cover digitally printed



*Recommended 2" anchor bolt projection

SERVICEABILITY

Drivers are accessible through the hand hole at the base of the post. Access door is flush mounted, digitally printed to match the pole finish and secured with anti-theft screws. All electrical components are field serviceable.

WOOD



WD-1



WD-2



WD-3



WD-4



WD-5



WD-6



WD-7



WD-8



WD-9



WD-10



WD-11



WD-12



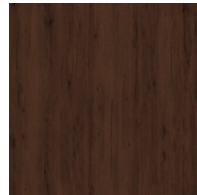
WD-13



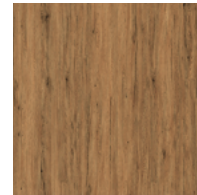
WD-14



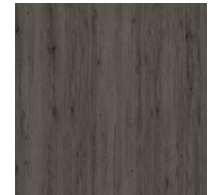
WD-15



WD-16



WD-17



WD-18



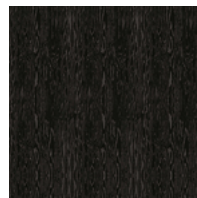
WD-19



WD-20

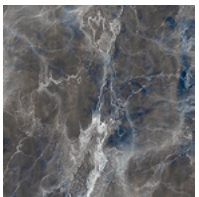


WD-21

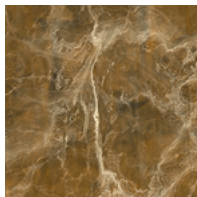


WD-22

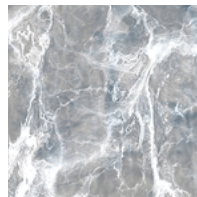
MARBLE



MB-1

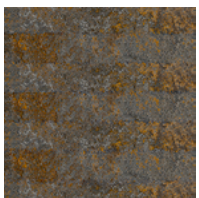


MB-2



MB-3

RUST METAL



RM-1



RM-2

DIAMOND

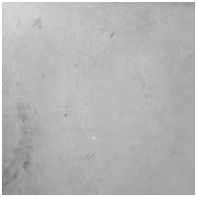


DM-1



DM-3

CONCRETE

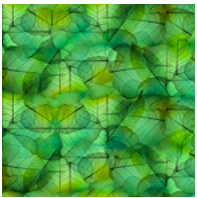


CC-1



CC-2

VEGETAL



VG-1



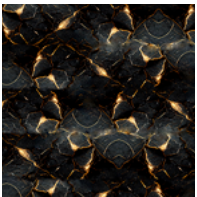
VG-2

STONE



ST-1

MISCELLANEOUS



MISC-1



**CREATE
YOUR OWN!***

*Consult us to design your new texture



Online textures