



SPECIFICATION SHEET

BOLLARD - Models ML - MLX



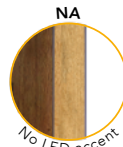
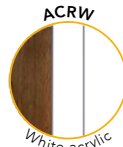
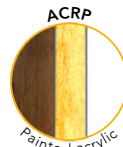
zilux.com



Model ML



Model MLX



- Up to 5 000 lumens
- Dark sky compliant configurations
- LED Accent available on sides of head and pole (optional)
- Patent-pending pole structure design
- Available in heights of 36", 42", 48", and custom sizes
- High-definition digital printing
- Low-maintenance DuroClear™ protective coating (no staining, no fading, easy to clean)
- Prewired pole – 24 VDC low-voltage
- Dimming driver easily accessible via access door at the base of the pole
- Secure aluminum anchor plate



ORDERING OPTIONS

Model	LED module ¹	Head Texture	Distribution	Color Temperature	Height	Pole Color	Pole Accents	Options
ML - Model ML	2500lm-18W	XXXX - See color chart	FII - Flat lens Type II	27K - 2700K	36 - 36in	XXXX - See texture chart	ACRL - Acrylic line top	RC - GFCI * ML only
MLX- Modèle MLX	3500lm-30W	CU - Custom design ²	FIII - Flat lens Type III	30K - 3000K	42 - 42in	CU - Custom design ²	ACRP - Painted acrylic	SP20 - Surge Protection 20Kv
			FV - Flat lens Type V	36K - 3600K	48 - 48in		ACRW - White acrylic	
				40K - 4000K	CU - Custom design ²		NA - No LED accent	
				50K - 5000K				
				57K - 5700K				

¹ Nominal lumen value.
² Consult factory.
 Dark sky compliant options.

NOTES



CONSTRUCTION

The pole and head are made of digitally printed aluminum composite panels, as well as extruded and molded aluminum parts. The assembly is chemically bonded, ensuring robustness and aesthetic appeal. The pole is fully pre-wired at the factory.

LIGHT MODULES

High-efficiency LED modules, IP67 waterproof, incorporating a heat sink to optimize heat dissipation. A flush-mounted, high-impact lens reduces upward light and optimizes glare control.

LED ACCENTS

Our unique design incorporates optional LED accents, covered with an acrylic diffuser printed to match the finish of the selected luminaire. The accents are located on each side of the bollard and vary depending on the model. The color of the accents can be specified from a variety of options.

ELECTRICAL

CETL US listed for wet location and certified to CSA STDs C22.2 250.0, 206 and conforms to UL STDs 1598. Surge protected 100-277V 50/60hz Class II integral dimmable driver located at the base and accessible through hand hole. Dimmable driver compatible with ELV, MLV, 0-10V, 1-10V, PWM and wired to a potentiometer in factory. Operating temperature is -40°C to 70°C / -40°F to 158°F.

FINISH

Pretreated primer coated aluminum, then digitally printed with the selected texture or design. Consult the factory for custom textures application or to integrate any logos, indications or other references to your finish. The printed surface is covered with our proprietary DUROCLEAR clear coat, tested in accordance with ASTM standards for the following:



ASTM G155
UV resistance



ASTM D3389
Abrasion Test



ASTM B117
Salt Spray Resistance



ASTM D6578
Graffiti Resistance

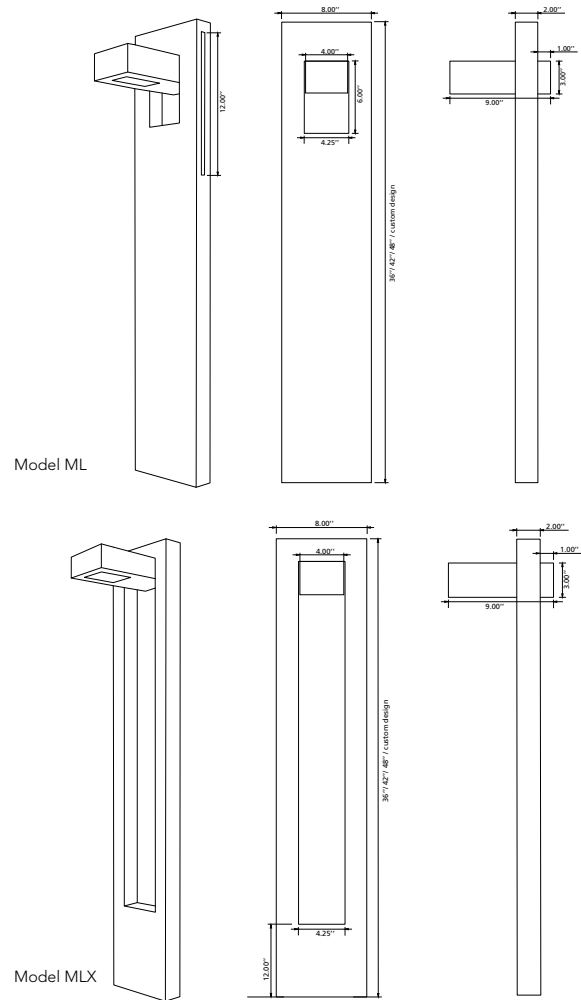


ASTM D3359-B
Adhesion Test

SERVICEABILITY

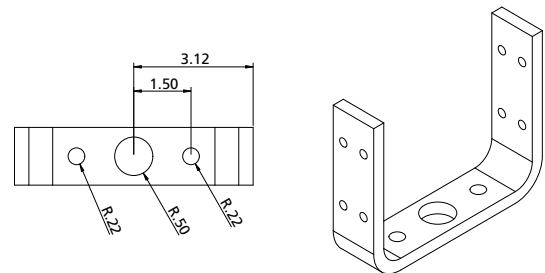
Drivers are accessible through the hand hole at the base of the post. Access door is flush mounted, digitally printed to match the pole finish and secured with anti-theft screws. All electrical components are field serviceable.

DIMENSIONS



BASE PLATE

Internal base plate made of heavy duty cast aluminum. Base plate is anchored directly on mounting surface using factory supplied mounting hardware.



WARRANTY



15 years limited warranty against defects in workmanship on pole and fixture heads and excessive fading of the finish. LEDs are covered for 10 years and Drivers are covered for 7 years. Please refer to the warranty section of our website for additional information : [zilux warranty](#)

WOOD



WD-1



WD-2



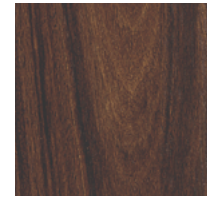
WD-3



WD-4



WD-5



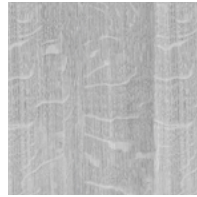
WD-6



WD-7



WD-8



WD-9



WD-10



WD-11



WD-12



WD-13



WD-14



WD-15



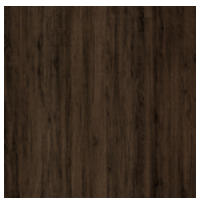
WD-16



WD-17



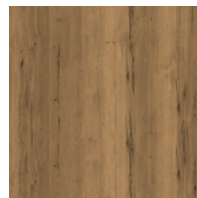
WD-18



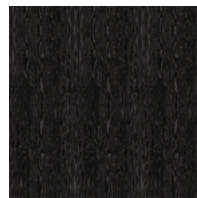
WD-19



WD-20

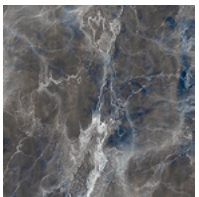


WD-21

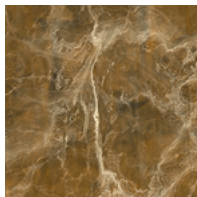


WD-22

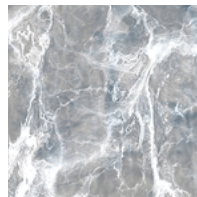
MARBLE



MB-1

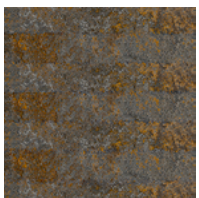


MB-2



MB-3

RUST METAL



RM-1



RM-2

DIAMOND

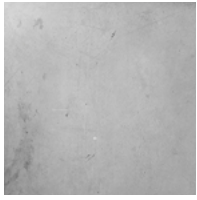


DM-1



DM-3

CONCRETE

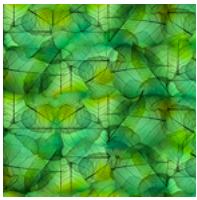


CC-1



CC-2

VEGETAL

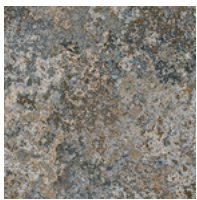


VG-1



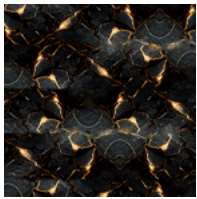
VG-2

STONE



ST-1

MISCELLANEOUS



MISC-1



*Consult us to design your new texture



Online textures