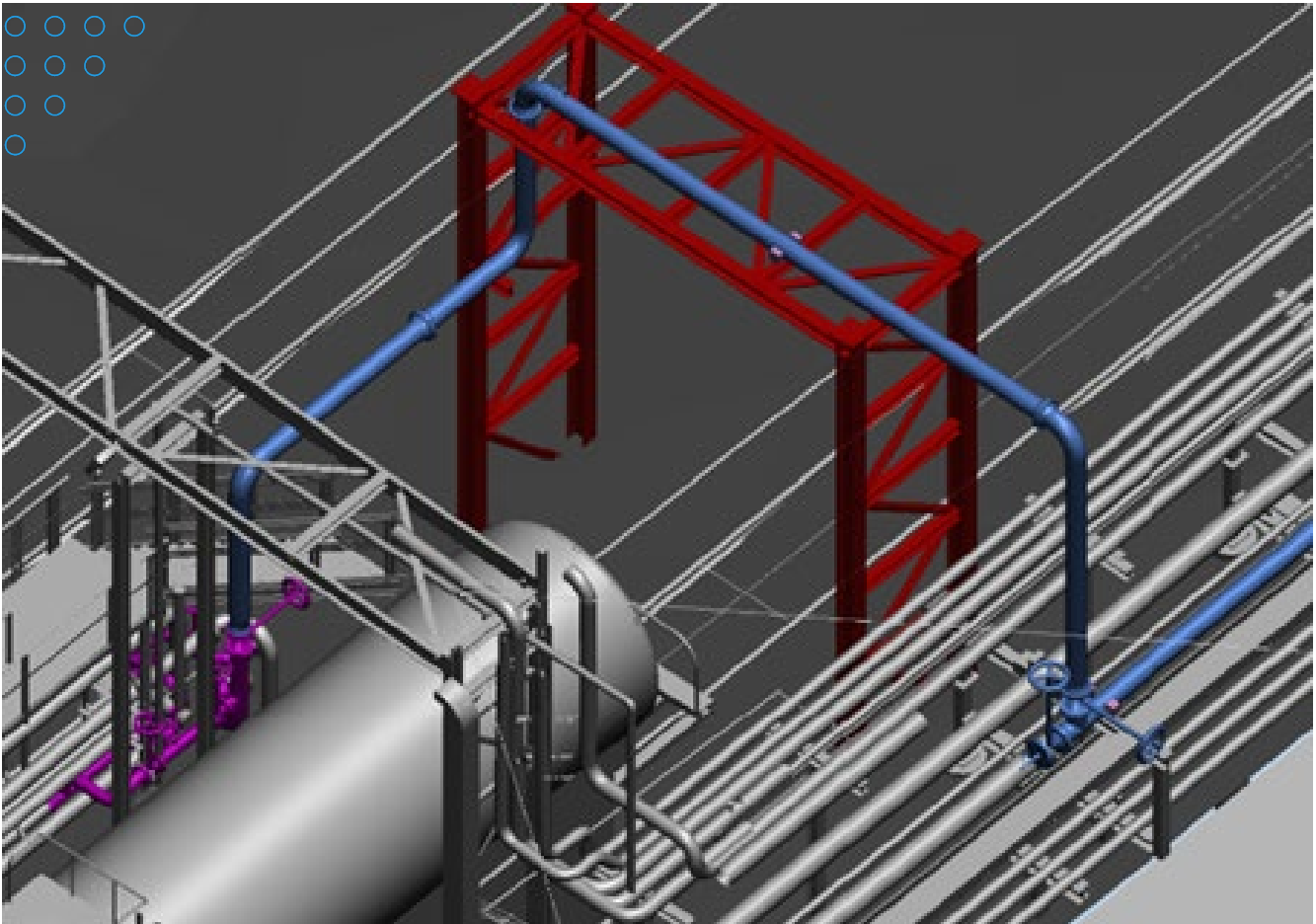


Diesel Railcar Loading Revamp

The Client needed to make changes to their product shipping terminal to debottleneck the loading of premium diesel fuel onto railcars and trucks. Rally provided the engineering and design services required to upgrade the existing piping, civil / structural, and electrical infrastructure to accomplish this goal.

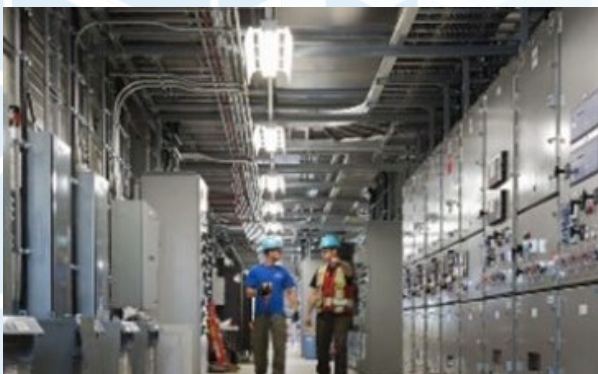
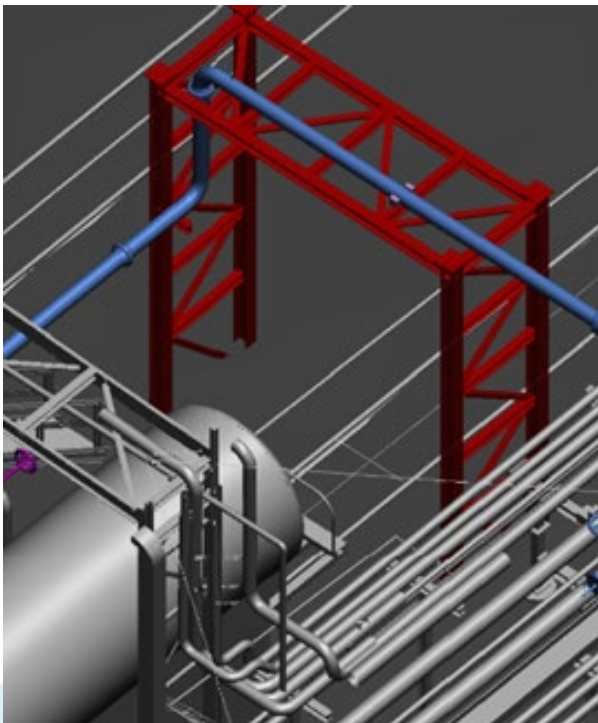


Diesel Railcar Loading Revamp

Saskatchewan

Refining & Petrochemicals

\$8M TIC



SCOPE OF WORK

A new 10" premium diesel fuel header was constructed from the existing filter to the rail loading facility. New structural steel, including a new bridge over the existing rail spurs, was required to support the piping.

An electrical load study indicated that upgrades were necessary to the existing electrical distribution system. Rally engineered the purchase requirements for a new transformer and an associated switchboard.

DELIVERABLES

Completed detailed construction work packages (CWPs) and provided contractor RFI support for all CWPs.