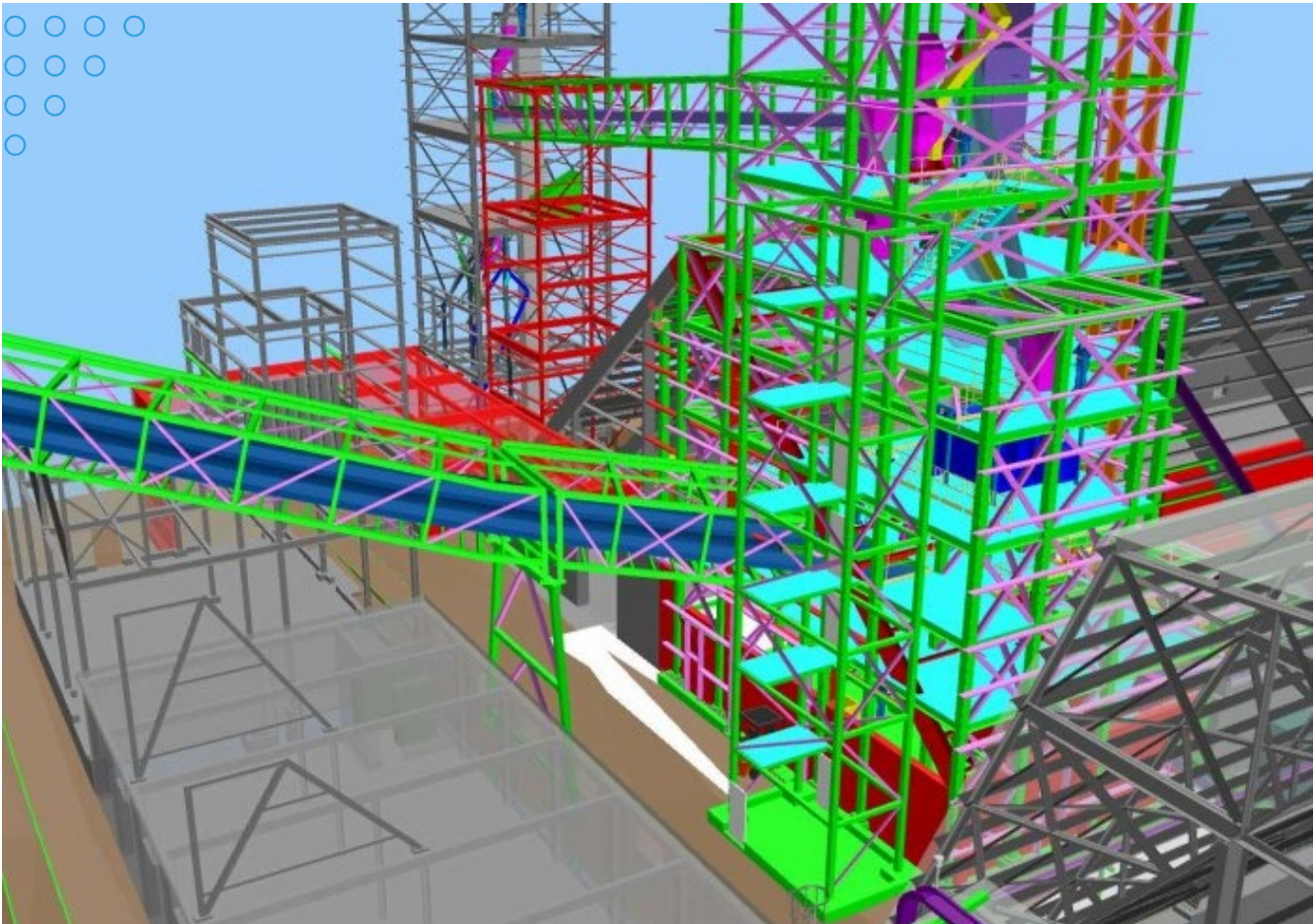
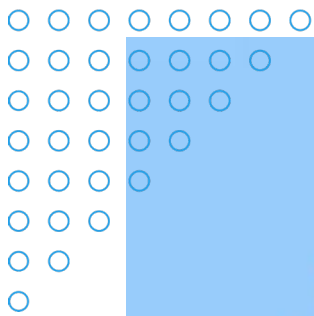


# Ammonium Sulphate Material Handling

The project was tasked to replace the existing ammonium sulphate material handling system due to concerns over the condition of the aging infrastructure. The project consisted of handling all distribution and screening of the product between the existing storage sheds to the load out facilities. The new system was designed considering the constraints of work within an operating facility and minimizing the impacts to the operational facility.

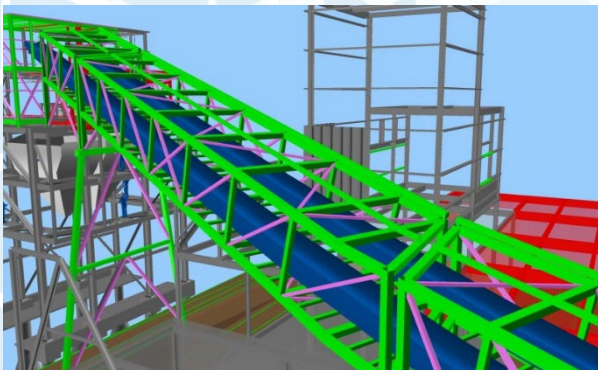
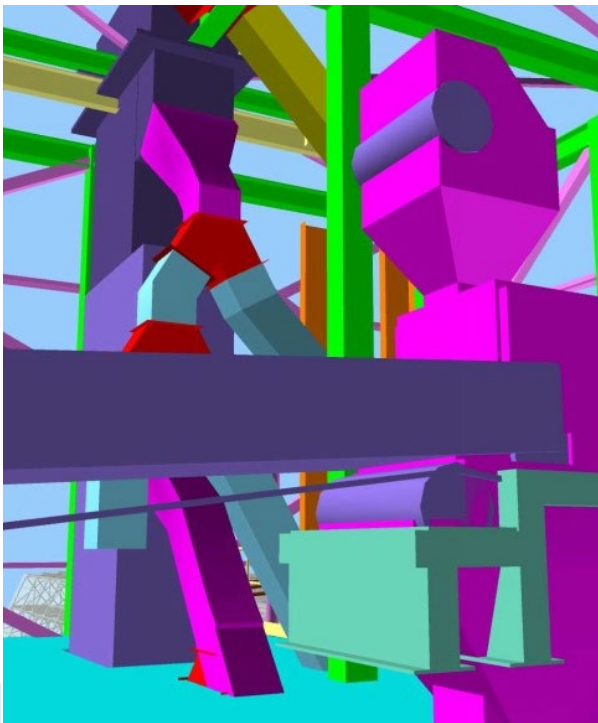


# Ammonium Sulphate Material Handling

Alberta

Refining & Petrochemicals

\$25M TIC



## DBM STUDY

A DBM was prepared in support of refining aspects of the design and obtaining stakeholder approvals.

- Updated flow schematics and P&IDs
- 3D layouts of equipment and major structures.
- Control narratives and operating philosophies.
- Equipment sizing and budget pricing.
- Material Takeoffs for a Capital Cost Estimate
- EPCM schedule and construction execution planning

## DETAILED ENGINEERING

Rally completed detail engineering including equipment MRs, structural design, and electrical & controls activities. Rally also executed the procurement for all major equipment.