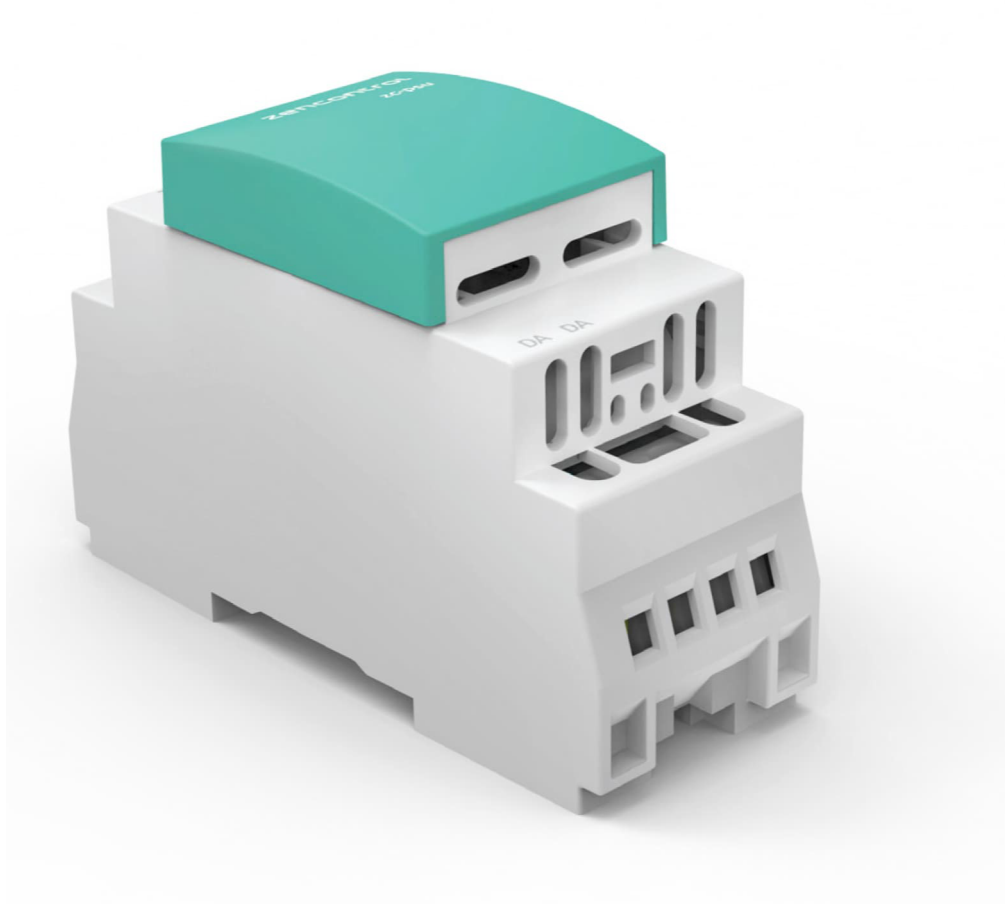


DALI power supply **datasheet**



Features

- 235 mA DALI line current
- DALI-2 compliant power supply
- Compliant to IEC 62386-101 Ed 2.0
- Advanced bus power supply, as defined by IEC 62386-101 Ed 2.0
- Suitable for distribution board mounting on standard 35 mm DIN rail



DALI-2

Certified DALI-2 compliant device



Thermal cut-off

Protected against over temperature conditions



Short circuit

Protected against short circuit conditions



Over-voltage

Protected against DALI over-voltage conditions



DALI power supply datasheet



Product range

| Order code | Description |
|------------|---------------------------------|
| zc-psu | DALI -2 power supply, DIN mount |

Features

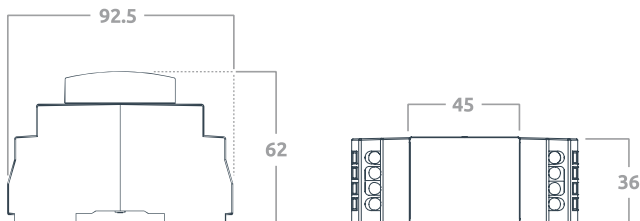
- Suitable for one DALI line
- 235 mA DALI line current
- Compatible with DALI systems
- DALI-2 compliant power supply
- Protected against short circuit and DALI over-voltage
- Tested and compliant to IEC 62386-101 Ed 2.0
- Advanced bus power supply, as defined by IEC 62386-101 Ed 2.0
- Suitable for distribution board mounting on standard 35 mm DIN rail

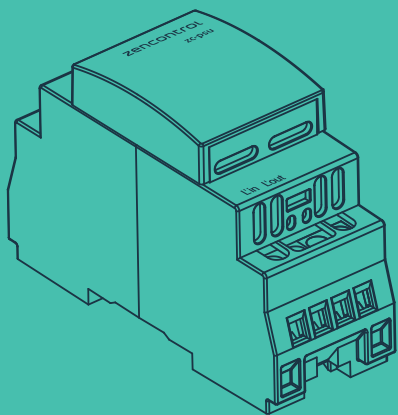
Specifications

| | |
|---------------------------|---|
| Supply voltage | 230 V ~ 50 Hz |
| Control system | DALI-2 |
| Guaranteed supply current | 235 mA |
| Maximum supply current | 250 mA |
| DALI voltage | 16.5 V nominal line voltage |
| Wiring | 1 - 4 mm ² Strip 6 - 7 mm |
| Operating temperature | 0 to 45°C |
| Material | PC |
| Classification | Class II |
| Mounting | DIN rail (35 mm) |
| Ingress protection | IP20 |
| Compliance standards | IEC 61347-2-11 IEC 62386-101 Ed 2.0 CISPR 15 EN 55015 EMC-2004/108/EC LVD-2006/95/EC |

Dimensions

92.5 / 62 / 36 mm





Product range

| Order code | Description |
|------------|--------------------------------|
| zc-psu | DALI-2 power supply, DIN mount |

Specifications

| | |
|---------------------------|---|
| Supply voltage | 220 - 240 V ~ 50 Hz |
| Control system | DALI-2 |
| DALI output voltage | 16.5 V dc nominal line voltage |
| Guaranteed supply current | 235 mA |
| Maximum supply current | 250 mA |
| Wiring | 1 - 4 mm ² Strip 6 - 7 mm |
| Operating temperature | 0 to 45°C |
| Material | PC |
| Classification | Class II |

Short circuit protection

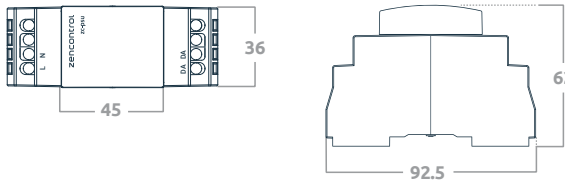
A DALI line load greater than the nominal current (> 240 mA) will cause the device to enter short circuit protection after 1.2 seconds. During short circuit protection the output will be disabled for 3 seconds and then restored. Once restored the process may repeat if the line current is still greater than nominal rated current.

Safety information

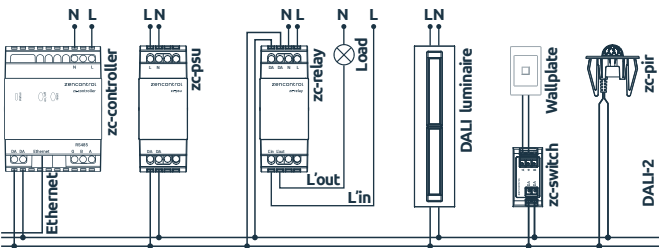
- This product must only be installed by a licensed electrician.
- Before commencing installation turn off and isolate the electrical supply.
- There are no user serviceable parts, attempting to service any part of the product will void the warranty
- DALI is not SELV and as such should be treated as LV.
- As the installer, it is your responsibility to ensure you comply to all relevant building and safety codes. Refer to application standards for the relevant rules.
- When the installation is complete, leave this manual with the building's owner for future reference.

Dimensions

| | |
|------------------|------------------------|
| Mounting options | DIN rail mount (35 mm) |
| Dimensions | 92.5 / 36 / 62 mm |



System overview

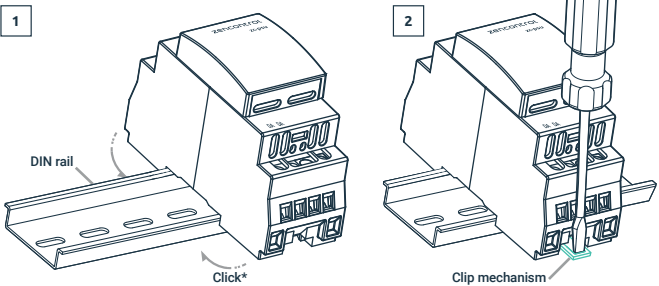


Installation

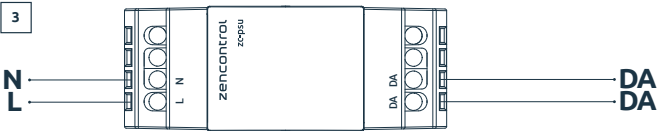
Remove the product from the box and inspect it for any damage. If you believe the product to be damaged or otherwise unsound, **do not** install the product. Please pack it back into its box and return it to the place of purchase for replacement.

If the product is satisfactory, proceed with the installation:

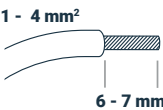
- 1 Ensure safety warnings are adhered to.
- 2 Mount the DALI power supply on DIN rail inside a mains rated enclosure as shown in **fig 1**. To remove from DIN rail, release the clip mechanism with a flat blade screw driver, as per **fig 2**.
- 3 Wire the DALI power supply as per the wiring diagram in **fig 3**.



Wiring diagram



Wire preparation



Notice

For more information on compliant software see our website **zencontrol.com**