

PROTACTILE EXPLORATION



Tactile exploration is when you are touching an object **together**.

Touching the same **objects simultaneously** is a way to engage in co-presence and leads to **richer linguistic and social experiences** for your child.

TACTILE EXPLORATION



Watch the video

Sometimes your hand will be touching the object and your child's hand will be on top of yours.

This is them observing what you are doing.



DISCOVER BY TOUCHING



This is similar to a sighted child observing you showing them an object.



KNOW BY SEEING

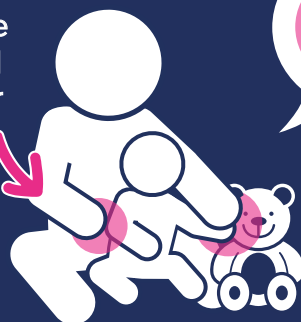
PAYING ATTENTION



Watch the video

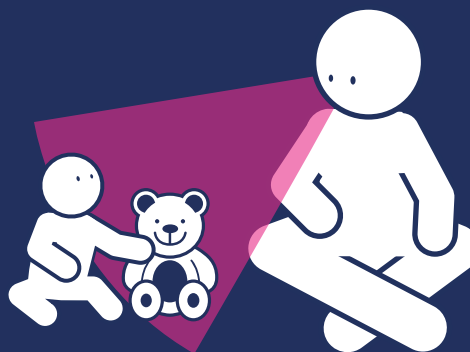
When your child is touching an object and your hand is on top of theirs, it indicates that you are **paying attention** to what they are doing.

Remember to provide **positive affirmation** through taps on their chest, arm or legs.



PHYSICAL CO-PRESENCE

It's the same attention given to a sighted child that says "Watch me!" to get attention.



VISUAL CO-PRESENCE

WATCH THE FULL VIDEO HERE

