



PATHWAY FOR THE DEVELOPMENT OF SAMOA FY2026/27 - FY2030/31





Pathway for the Development of Samoa FY2026/27 – FY2030/31

Apia, 2026

This publication was compiled and reviewed by the Economic Policy and Planning Division, Ministry of Finance
© Government of Samoa

Layout and Design by Vitolio Iamafana

Ministry of Finance
Economic Policy and Planning Division
Private Mail Bag - 02 Apia City Boulevard
SAMOA

Tel: +685-34333

Email: information@mof.gov.ws

**PATHWAY FOR THE DEVELOPMENT OF SAMOA
FY2026/27 – FY2030/31**

Apia, 2026

MESSAGE

It is an honour and a privilege to present the Pathway for the Development of Samoa (PDS2), covering the period FY2026/27–FY2030/31.

The first Pathway prioritised recovery and revival post-COVID, for all sectors of the economy. Efforts were focused on the extension of assistance to reach the most vulnerable, strengthening of rural services, building a more diversified economy, and safeguarding the environment upon which our livelihoods and way of life depend.

This new Pathway places a stronger emphasis on addressing key development challenges by advancing community empowerment, driving resilient growth, and upholding good governance, social justice, and strong partnerships. The strategic direction of the PDS2 is anchored in the Samoan cultural concept of *Aiga* – its interconnectedness, values and resilience representing the foundation and pillars of national development. As such, the development of Samoa is a shared and collective responsibility by all Samoans for the common good. What we can achieve together far exceeds what Government can accomplish alone. It is a collective effort as the AIGA working together in partnership. After all, Samoa is an extended family.



In alignment with the above, the Vision of this Pathway for the next five (5) years is for a:

“Highly resilient, safe and prosperous Samoa, grounded in the Fa’a-Samoa and Faith in God”.

This will be delivered through the theme of:

“Sustaining community empowerment, driving resilient growth and fostering good governance, social justice and partnerships”

We are deeply grateful for the contributions to the development of this Pathway through consultations held with all sectors of our economy, inclusive of the private sector, civil societies, communities and development partners. This Pathway continues to reflect on critical priorities and aspirations for a more resilient and prosperous Samoa, that is built together.

I commend this Pathway to all of Samoa – here and abroad – and our development partners.

A handwritten signature in blue ink, appearing to read 'Mulipola', written over a light blue circular watermark.

Hon. Mulipola Anarosa Ale-Molio'o
(DEPUTY PRIME MINISTER AND MINISTER OF FINANCE)

CONTENTS

MESSAGE	i
VISION & THEME	1
INTRODUCTION	2
KEY STRATEGIC OUTCOMES	4
KEY STRATEGIC OUTCOME 1	5
KEY PRIORITY AREA 1: PUBLIC HEALTH AND WELLNESS.....	7
Expected Outcome 1.1: Accessible Quality Healthcare	8
Expected Outcome 1.2: A Healthy Population.....	8
KEY PRIORITY AREA 2: EDUCATION AND CULTURE	10
Expected Outcome 2.1: Inclusive Education and Learning.....	11
Expected Outcome 2.2: Diversified Education and Training Relevance	12
Expected Outcome 2.3: Preserved Samoan culture and heritage.....	12
KEY STRATEGIC OUTCOME 2	14
KEY PRIORITY AREA 3: MACROECONOMIC RESILIENCE	16
Expected Outcome 3.1: Sustained Economic Performance	17
Expected Outcome 3.2: Safeguarded External Position	17
KEY PRIORITY AREA 4: COMMUNITIES’ ECONOMIC EMPOWERMENT	18
Expected Outcome 4.1: Improved Household Income and Living Standards.....	18
Expected Outcome 4.2: Enhanced Support and Protection for the Most Vulnerable	19
KEY PRIORITY AREA 5: PRIVATE SECTOR DIVERSIFICATION	20
Expected Outcome 5.1: Dynamic Business Growth and Innovation	21
Expected Outcome 5.2: Increased Employment and Export Opportunities.....	21
KEY STRATEGIC OUTCOME 3	23
KEY PRIORITY AREA 6: SOCIAL JUSTICE	25
Expected Outcome 6.1: Safer Communities	26
Expected Outcome 6.2: Equitable Access to Justice and Democracy.....	26
KEY PRIORITY AREA 7: WORKFORCE DEVELOPMENT	28
Expected Outcome 7.1 Skilled Workforce	29
Expected Outcome 7.2: Effective Public Service.....	29
KEY PRIORITY AREA 8: STRATEGIC DIPLOMACY AND SECURITY	30
Expected Outcome 8.1: Enhanced Border Security and Cyber Security.....	31
Expected Outcome 8.2: Elevated Diplomatic Relations and Global Influence	31
KEY STRATEGIC OUTCOME 4	33
KEY PRIORITY AREA 9: ENVIRONMENTAL PROTECTION, RESTORATION AND CONSERVATION	35

Expected Outcome 9.1: Strengthened Environmental Resilience and Sustainability	36
Expected Outcome 9.2: Enhanced Disaster Readiness.....	37
KEY PRIORITY AREA 10: RENEWABLE ENERGY TRANSITION	38
Expected Outcome 10.1: Balanced Energy Mix	39
KEY STRATEGIC OUTCOME 5.....	40
KEY PRIORITY AREA 11: PUBLIC INFRASTRUCTURE ASSET MANAGEMENT	42
Expected Outcome 11.1: Responsive Public Utility Services	43
Expected Outcome 11.2: Resilient Public Infrastructure	43
Expected Outcome 11.3: Enhanced Connectivity and Mobility	44
KEY PRIORITY AREA 12: DIGITAL TRANSFORMATION AND INNOVATION	45
Expected Outcome 12.1: Increased Digital Infrastructure and Technology Use	46
MAPPING (PDS2 – SAMOA 2040 – 2050 STRATEGY – SDGs)	47
MAPPING (PDS1 – PDS2)	48

► VISION & THEME



VISION

A Highly Resilient, Inclusive, Safe and Prosperous Samoa, grounded in the Fa'a-Samoa and Faith in God



THEME

Sustaining community empowerment, driving resilient growth and fostering good governance, social justice and partnerships.

INTRODUCTION

Samoa enters this new planning period having demonstrated notable economic resilience. Following economic contractions over two consecutive years during the COVID-19 pandemic, real GDP rebounded in FY2021/22 to 2.3 percent, before peaking at 15.2 percent in FY2022/23. Growth moderated to 4.8 percent in FY2023/24 and 4.2 percent in FY2024/25. This recovery was driven largely by the revival of the tourism sector, notable economic activity across the commerce industry, and sustained remittance inflows. The successful hosting of the Commonwealth Heads of Government Meeting (CHOGM) in October 2024 further elevated Samoa's international profile, attracting renewed investor confidence and regional engagement.

Despite these gains, Samoa continues to face structural vulnerabilities typical of Small Island Developing States. These include geographic remoteness, a narrow production and export base, limited domestic supply capacity, and a high reliance on remittances and official development assistance. The country remains acutely exposed to climate change and natural disasters, while emerging pressures such as energy insecurity, infrastructure capacity constraints, cybersecurity risks, and labour market limitations pose additional risks to sustained and inclusive growth. Recent challenges, including power rationing in early 2025, highlight the urgency of strengthening resilience in critical systems.

These key development challenges have directly informed the strategic direction and focus of the Pathway for the Development of Samoa (PDS2) for FY2026/27 to FY2030/31. The Plan adopts a more disciplined and integrated prioritisation approach, drawing on key lessons from PDS1, where the imperative for post-pandemic recovery resulted in a broad prioritisation of interventions across all sectors. While this approach was necessary at the time, the PDS2 recognises the importance of a sharper focus, sequencing and alignment of national efforts to achieve measurable and sustainable outcomes.

PDS2 is therefore anchored around five Key Strategic Outcomes (KSOs), supported by clearly defined Key Priority Areas (KPAs) which collectively respond to Samoa's most pressing development challenges – ranging from governance, education and health outcomes to economic diversification and labour force constraints. Emerging challenges include drug use and related crime as well as cybersecurity risks; and more persistent challenges around energy supply, infrastructure management and connectivity, and Samoa's vulnerability to external shocks and disasters. This structure strengthens policy coherence across the existing sector-wide approach in the National Planning Framework and ensures that national priorities are directly linked to the challenges they seek to address, while maintaining continuity with progress achieved under PDS1.

Importantly, these national priorities are also aligned with Samoa's regional and global commitments, including the 2050 Strategy for the Blue Pacific Continent and the Sustainable Development Goals (SDGs), ensuring coherence between national planning and international obligations. Across all KSOs, the Government is committed to mainstreaming two cross-cutting principles, climate resilience and Gender Equality, Disability and Social Inclusion. These are systematically embedded in programmes and initiatives at the different levels of planning, better ensuring contextual integration and monitoring.

At the same time, the Plan embraces a unifying national development narrative grounded in the Samoan culture of *Aiga* – the family as the foundation of society. The *Aiga* concept reflects the interconnectedness of social wellbeing, economic empowerment, environmental stewardship and governance, recognising that sustainable development outcomes are ultimately realised at the family and community level. Each of the five KSOs can be understood as reinforcing different dimensions of the *Aiga*: healthy and educated families, economically secure households, safe and well-governed communities, a protected natural environment, and resilient infrastructure that supports daily life.

In this way, the *Aiga* pillars of development complement existing sectoral structures and provide an integrating lens through which national priorities are conceptualised and delivered. It reinforces a whole-of-government

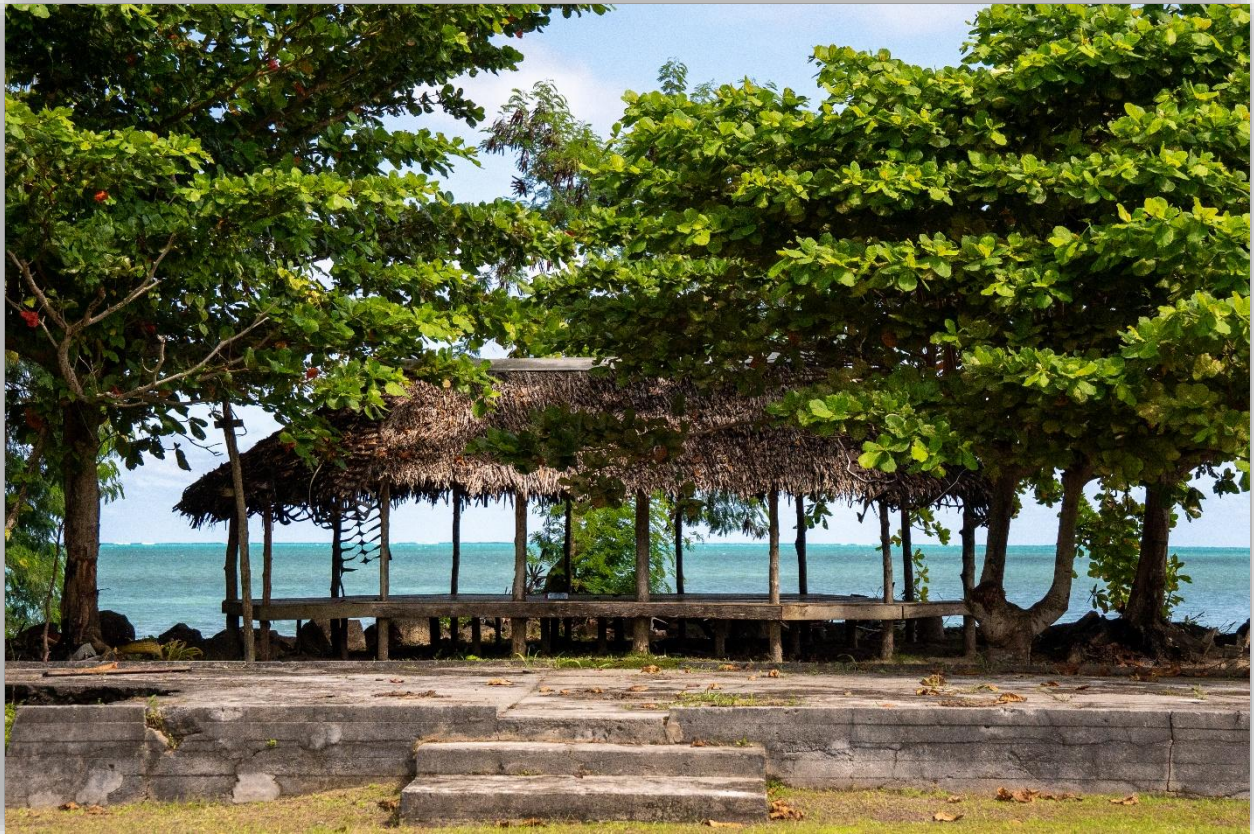
and whole-of-society approach, ensuring that policies, investments and services are better coordinated and centred on improving the wellbeing of Samoan families.

This integrated and evidence-based approach is further strengthened by the findings of the Mid-term Review and six-month pre-completion review of PDS1 (FY2021/22 - FY2025/26). The lessons and recommendations from these reviews, alongside extensive stakeholder consultations have directly shaped the priorities, structure, and Monitoring, Evaluation, and Learning (MEL) Framework of PDS2.

The MEL Framework will be used to track progress – in addition to the development of a national dashboard – towards the achievement of national priorities and Government commitments, with national indicators and targets further supported by the implementation of the 14 Sector Plans, and the corporate and district level plans to which they are aligned. The Cabinet Development Committee (CDC) will be the main oversight body for the monitoring and reporting of the PDS at its mid- and full term, complementing biannual sector progress reporting also to the CDC. On a more regular basis, implementation progress and updates will be facilitated through the Cabinet Budget and Finance, supporting the existing arrangement and establishment of Cabinet committees to monitor and provide Cabinet oversight of key Government initiatives.

As Samoa navigates an increasingly complex global and regional environment, PDS2 provides a coherent and focused pathway – one that balances resilience with opportunity, and national ambition with the enduring strength of the Aiga as the cornerstone of development.

KEY STRATEGIC OUTCOMES



KEY STRATEGIC OUTCOME 1
INCLUSIVE SOCIAL DEVELOPMENT

KPA 1: PUBLIC HEALTH & WELLNESS
KPA 2: EDUCATION & CULTURE



KEY STRATEGIC OUTCOME 2
SUSTAINABLE ECONOMY

KPA 3: MACROECONOMIC RESILIENCE
KPA 4: COMMUNITIES ECONOMIC EMPOWERMENT
KPA 5: PRIVATE SECTOR DIVERSIFICATION



KEY STRATEGIC OUTCOME 3
TRUSTED GOVERNANCE, RULE OF
LAW & SECURITY

KPA 6: SOCIAL JUSTICE
KPA 7: WORKFORCE DEVELOPMENT
KPA 8: STRATEGIC DIPLOMACY & NATIONAL
SECURITY



KEY STRATEGIC OUTCOME 4
SAFEGUARDED CLIMATE-RESILIENT
ENVIRONMENT

KPA 9: ENVIRONMENTAL PROTECTION,
RESTORATION & CONSERVATION
KPA 10: RENEWABLE ENERGY TRANSITION



KEY STRATEGIC OUTCOME 5
STRUCTURED PUBLIC WORKS AND
SUSTAINABLE INFRASTRUCTURE

KPA 11: PUBLIC INFRASTRUCTURE ASSET
MANAGEMENT
KPA 12: DIGITAL TRANSFORMATION & INNOVATION

KEY STRATEGIC OUTCOME 1 INCLUSIVE SOCIAL DEVELOPMENT

“Ua atoa usu taeao e ono ia Fulu’ulalefanua”



KEY PRIORITY AREA 1
PUBLIC HEALTH & WELLNESS

EXPECTED OUTCOMES

- ACCESSIBLE QUALITY HEALTH CARE
- A HEALTHY POPULATION



KEY PRIORITY AREA 2
EDUCATION & CULTURE

EXPECTED OUTCOMES:

- INCLUSIVE EDUCATION & LEARNING
- DIVERSIFIED EDUCATION & LEARNING RELEVANCE
- PRESERVED SAMOAN CULTURE & HERITAGE

KEY STRATEGIC OUTCOME 1: INCLUSIVE SOCIAL DEVELOPMENT

KEY POLICY INITIATIVES

Womb-to-Tomb Programme

- Public Health Care
- Establishment of the new Ministry of Family and Social Affairs
- Child Wellbeing Benefit
- Free education to College through the One Government Grant
- Free meals at ECE and Primary
- Subsidized fees at Tertiary through the Government Scholarship Schemes and the District Development Program
- Senior Citizens Pension (inclusive of free healthcare)

Inclusive social development reflects the Government's unwavering commitment to the health, education, cultural identity and overall well-being of its people. It recognises that sustainable development is inseparable from human capital development, and that a nation's progress is measured not only by economic growth but by the quality of life experienced by every Samoan.

This Key Strategic Outcome (KSO) draws together two deeply interconnected priority areas – the health and wellness of the population, and the quality, relevance and cultural grounding of education and learning. A healthy population learns and earns more effectively, and a well-educated population makes healthier choices and builds more resilient communities. Communities

rooted in Samoan culture and values sustain the social cohesion that underpins both. The outcomes pursued under this pillar are deliberately designed to reinforce one another.

The priorities in this Key Strategic Outcome are directly informed by lessons from the first Pathway for the Development of Samoa (PDS1). The PDS1 Mid-Term Review identified persistent gaps in rural health service delivery, a rise in neonatal mortality, and growing pressures from non-communicable diseases on current health services and resources. On the education front, there is a need for quality outcomes at all levels with more attention on Early Childhood Education (ECE) as well as stronger alignment between education and the demands of Samoa's labour market. At the same time, the PDS1 affirmed the foundational importance of Gagana Samoa and Samoan cultural heritage as pillars of national identity that must be actively preserved and transmitted across generations.

The Government's commitment to inclusive social development will be driven by a life-cycle support programme of Womb-to-Tomb policy initiatives as highlighted above.

KEY PRIORITY AREA 1: PUBLIC HEALTH AND WELLNESS



The Government of Samoa reaffirms its commitment to providing equitable and quality health services that reach every member of the population, with integrated efforts to improve health outcomes. This priority area sets the strategic direction for a health system that is responsive, well-resourced, and deeply connected to the communities it serves.

Samoa's health profile presents both persistent and emerging challenges. While progress was made under PDS1 in expanding health infrastructure and immunisation coverage, the Mid-Term Review identified areas requiring urgent renewed focus; service delivery gaps at rural district hospitals and health centres, a concerning rise in neonatal mortality, rapidly increasing incidence of non-communicable diseases (NCDs), and growing rates of sexually transmitted infections. Mental health, long underserved, has also emerged as a priority area that demands a more structured and adequately resourced response. These challenges are compounded by Samoa's vulnerability to climate-related events and disasters, which can disrupt health service delivery and increase disease burden at short notice.

The two expected outcomes under this priority area address both the infrastructure and service readiness of the health system and the health status of the population itself. Efforts towards this Key Priority Area are aligned with Samoa's regional and global commitments, respectively Thematic Area 2: People Centred Development of the 2050 Strategy for the Blue Pacific Continent, and the following Sustainable Development Goals (SDGs): SDG 1 - No Poverty, SDG 2 - Zero Hunger, SDG 3 - Good Health and Well-being, SDG 6 - Clean Water and Sanitation, and SDG 10 - Reduced Inequalities.

Expected Outcome 1.1: Accessible Quality Healthcare



PC: Ministry of Health

Accessible and quality healthcare means that every person in Samoa regardless of where they live, their gender, their age or their physical ability can obtain timely and clinically effective health services. This outcome directly addresses the access and quality gaps identified during the PDS1 implementation review, particularly the uneven capacity of district hospitals and the difficulties faced by rural and remote communities in reaching appropriate care.

This outcome will be achieved through targeted areas of investment and reform. Further investments in health infrastructure, including the upgrade of rural district hospitals and health centres will bring the physical condition of facilities in line with the standard of care the Government has committed to deliver. This will be complemented by improvements in the supply chain management for essential medicines, better ensuring that treatment is available when and where it is needed. Additionally, sustained investment in health workforce development and distribution will address the persistent imbalance between urban and rural staffing, which remains one of the most significant barriers to equitable access. At the sector level, the full implementation of digital health systems will reduce inefficiencies, support continuity of care and enable real-time public health surveillance across all levels of the health system. These efforts reflect the Government's recognition that quality healthcare is not limited to clinical inputs and service readiness, but also includes the dignity and responsiveness with which it is delivered. Patient experience and satisfaction are therefore treated as measurable national outcomes.

Expected Outcome 1.2: A Healthy Population



This outcome addresses Samoa's current and emerging health burden holistically, recognising that the factors driving ill-health in Samoa today span communicable and non-communicable disease, maternal and child health, mental health, and sexual and reproductive health.

Priority interventions in response to rising neonatal mortality rates will include antenatal care quality, skilled birth attendance, postnatal follow-up, and the strengthening of referral pathways between community health workers and hospital-level care. Immunisation coverage will continue and be sustained, extended by drawing on the community health network as the primary vehicle for outreach to remote populations.

The growing burden of NCDs represents one of the most serious development challenges to Samoa's public health and economic productivity. Diabetes, hypertension, cardiovascular disease and obesity are now among the leading causes of premature death and disability. This outcome prioritises a shift toward prevention – strengthening health literacy, supporting active recreation and physical activity across all age groups, reforming school nutrition and food environments, and scaling up community-based NCD screening and early intervention programmes.

Regular physical activity is one of the most cost-effective public health investments available to reduce non-communicable diseases, improve mental health, and strengthen overall wellbeing. Reflective of its integrated approach to development, the Government is committed to positioning sport and physical activity as fundamental components of a healthy national lifestyle, embedded across the education system, communities, workplaces and every day public spaces. Strengthened physical education, expanded community sports programmes leveraging the District Development Programme, and investment in facilities, recreational spaces for active participation will promote active living for all Samoans.

Mental health is explicitly recognised as part of this outcome, with enhanced surveillance for evidence-based planning. Samoa's mental health burden including depression, anxiety, substance misuse and the psychosocial impacts of climate-related disasters and economic displacement has historically been underserved by the formal health system. This outcome commits to strengthening mental health services, reducing stigma through community engagement, and integrating mental health screening into primary care settings.

The rising incidence of sexually transmitted infections will be addressed through integrated, multi-sectoral and community-based health programmes that combine education, testing, treatment and de-stigmatisation. Other communicable diseases and neglected tropical diseases will continue to be addressed through existing control programmes, with enhanced surveillance to enable early detection and response.

KEY PRIORITY AREA 2: EDUCATION AND CULTURE



PC: Radio New Zealand

Education is Samoa’s most powerful long-term investment in human capital. It equips individuals with the knowledge, skills and values to lead productive and fulfilling lives, drives workforce development, and builds the civic capacity that a functioning democracy requires. When grounded in Samoan culture and the living heritage of fa’ a-Samoa, education also becomes a vehicle for the transmission of identity, language and belonging – key assets that no generation can afford to lose.

This Key Priority Area builds on the achievements of PDS1 while responding directly to the challenges that were identified through its review. While access to education has improved, learning outcomes, particularly literacy and numeracy at the Primary and Secondary levels remain below the standard required to prepare young Samoans for the demands of further education and employment. The transition from Primary and Secondary Education to Post-Secondary Education and Training (PSET), and from PSET to the labour market requires stronger support in terms of the responsiveness of curricula and training programmes to actual market needs. In addition, the documentation, safeguarding and active transmission of Samoa’s cultural heritage including Gagana Samoa requires a more systematic and better-resourced approach than has previously been possible.

The three expected outcomes under this Key Priority Area reflect a coherent and mutually reinforcing strategy: improving the inclusivity of learning from early childhood through to tertiary level; diversifying the relevance and responsiveness of post-secondary education and training to workforce and national development needs; and safeguarding and actively revitalising Samoa’s tangible and intangible cultural heritage as a living inheritance. The links between these outcomes are deliberate. A young Samoan who learns well, gains relevant skills, and is grounded in the Samoan culture is the strongest possible foundation for the nation’s future.

This strategic direction is informed by international and regional development frameworks, including the 2030 Agenda for Sustainable Development, particularly SDG 4 on Quality Education, alongside SDG 8 on Decent Work and SDG 11 on Cultural Heritage and Sustainable Communities. It is further reinforced by the 2050 Strategy for the Blue Pacific Continent, which positions education, culture and identity as central pillars of resilience, inclusive development and regional self-determination under Thematic Area 2: People Centred Development.

Expected Outcome 2.1: Inclusive Education and Learning



PC: Government of Samoa

This outcome addresses both the quality of what is taught and learned, and the equity of who can access it. Improving learning outcomes requires sustained investment in teaching quality at all levels of the system. At the sector level, the Government will prioritise the pre-service and in-service professional development of teachers, the regular review and update of curricula to ensure relevance and rigour, and the strengthening of school leadership and management. Assessment frameworks at Years 8 and 12 will provide a consistent measure of student progress at the national level, as will

transition rates from Primary to Secondary and from Secondary to

PSET; the results of which will be used to drive targeted interventions in underperforming schools and regions. Early childhood education is recognised as the highest-return investment in the education pipeline. Participation rates at ECE level remain uneven across geographic areas and socioeconomic groups. This outcome commits to expanding access to quality ECE, with particular attention to underserved communities and families facing financial barriers to participation. The Ministry of Education and Culture and the ECE Council will work in partnership to ensure that ECE providers meet quality standards and are supported with adequate resources and training. These efforts will complement the holistic work under the Early Childhood Development Framework, implemented in collaboration by the Community, Health and Education Sectors.

The inclusion of students with disabilities in mainstream and specialist educational settings is a specific and measurable commitment under this outcome. The Government acknowledges that children and young people with disabilities have historically faced significant barriers to educational participation, and will take active steps through infrastructure improvements, teacher training, adapted learning materials and strengthened support services to remove those barriers.

Expected Outcome 2.2: Diversified Education and Training Relevance



National University of Samoa – TVET

A well-functioning PSET system is essential to Samoa’s ability to meet its workforce needs and provide young Samoans with genuine pathways to productive employment and economic participation. This outcome addresses the persistent gap between what PSET institutions are producing and what employers and the national development agenda require.

The diversification of PSET programmes will be driven by a structured analysis of current and emerging labour market demand.

Sectors identified as priority areas for workforce development include tourism and hospitality, healthcare and allied health, information and communications technology, construction and engineering, environment and land surveying, and agriculture and fisheries. Recent initiatives highlighting the diversification of education include the introduction of a Sports Science qualification at the National University of Samoa and the forthcoming reforms to the School of Maritime Training aimed at improving the qualification and national and international compliance of seafarers. The Samoa Qualifications Authority will play a central role in ensuring that qualifications are benchmarked against regional and international standards, and that the qualifications framework evolves in response to changing labour market conditions.

Strengthening the linkages between PSET institutions and the private sector is central to this outcome. The Government will facilitate structured industry partnerships that give employers a meaningful voice in curriculum design, provide students with work-integrated learning opportunities, and create clearer pathways from training into employment. The National University of Samoa and accredited private providers, both local and regional operating in Samoa will be supported to develop and maintain these partnerships as a core part of their institutional function.

Expected Outcome 2.3: Preserved Samoan culture and heritage



Samoa’s cultural identity is rooted in the Fa’aSamoa and Gagana Samoa, and in a rich heritage of oral traditions, performing arts, traditional crafts, ceremonies and social practices. It is a living system of knowledge, values and belonging that defines what it means to be Samoan in the present and equips future generations to navigate the world with a secure sense of who they are. The Government’s commitment under this outcome is both to safeguard this heritage against loss and to actively ensure its transmission, use and celebration. The Government will continue to use the Samoan language in Parliament, Cabinet and the work of all Government agencies

in order to sustain our Gagana Samoa.

The education system is the most powerful vehicle for cultural transmission available to the Government. The integration of Gagana Samoa as a core subject of rigorous instruction at all levels is essential to ensuring that the language remains vibrant. Cultural programmes implemented through schools and the District Development Programme provide structured opportunities for young people to engage with traditional arts, performances, ceremonies and craft practices. The Government will expand, strengthen and revive these

programmes, develop culturally responsive learning materials, and support the role of matai, elders and cultural practitioners as knowledge holders and educators.

The protection of tangible heritage including artefacts, historical sites, archives and built heritage, requires a coordinated institutional framework. The Ministry of Education and Culture will develop and maintain a national register of documented cultural heritage elements through the National Museum, and will work with villages, churches, civil society organisations and regional and international partners to establish sustainable conservation mechanisms. Samoa's engagement with UNESCO conventions on intangible cultural heritage and with Pacific regional cultural networks will be strengthened to support this work. This cultivation of our Samoan heritage will be further strengthened by a focus on increasing publications on Samoan language and culture through the National University of Samoa and other avenues. Cultural heritage courses also contribute to preservation, as graduates deepened this knowledge base and transmit it to future generations.

KEY STRATEGIC OUTCOME 2 SUSTAINABLE ECONOMY

“Ua utupūpū fulu o le sega’ula”



PC: Buy Local



KEY PRIORITY AREA 3
MACROECONOMIC RESILIENCE

EXPECTED OUTCOMES

- SUSTAINED ECONOMIC PERFORMANCE
- SAFEGUARDED EXTERNAL POSITION



KEY PRIORITY AREA 4
COMMUNITIES ECONOMIC
EMPOWERMENT

EXPECTED OUTCOMES:

- IMPROVED HOUSEHOLD INCOMES AND LIVING STANDARDS
- ENHANCED SUPPORT & PROTECTION OF THE MOST VULNERABLE



KEY PRIORITY AREA 5
PRIVATE SECTOR DIVERSIFICATION

EXPECTED OUTCOMES

- DYNAMIC BUSINESS GROWTH & INNOVATION
- INCREASED EMPLOYMENT & EXPORT OPPORTUNITIES

KEY STRATEGIC OUTCOME 2: SUSTAINABLE ECONOMY

POLICY INITIATIVES

- Separation of the Ministry of Agriculture and Ministry of Fisheries and Marine Resources
- Establishment of the new District Development Authority
- Social Protection Measures – Child Wellbeing Benefit, Senior Citizens Pension, Disability Benefit, Shelter Financing
- Minimum Wage Review and Increase
- First Harvest Program
- Concessional Housing Lending Facility through Samoa Housing Corporation
- Concessional Lending Facilities targeting exporters, manufacturing and tourism businesses through the Development Bank of Samoa and Samoa Business Hub

Building a diversified and sustainable economy is imperative to navigating the current geopolitical landscape, particularly for a developing country like Samoa whose external vulnerabilities necessitate a stable macroeconomic foundation. The Government is committed to improving the overarching economic state of the country while ensuring this is also felt and equally shared in the daily lives of its people – across businesses and within communities.

Drawing from the PDS1 lessons, this Key Strategic Outcome aims to sustain the momentum of macroeconomic stability, but with a sharpened focus on private sector growth and community economic empowerment, thus contributing to the diversification of Samoa's economy and its resilience to external shocks. The goal is a sustainable economy that is

diverse enough to cushion shocks, strong enough to withstand adverse effects, and inclusive enough to leave no one behind.

Key policy initiatives to be pursued will focus on targeted interventions that build and protect the economic livelihood of communities, as well as business enabling measures that support growth and innovation.

KEY PRIORITY AREA 3: MACROECONOMIC RESILIENCE



This Key Priority Area focuses on economic resilience, reflecting both the overarching vision of PDS2 and the need to adapt to increasing global volatility. It builds on the steady economic recovery achieved in recent years by embedding stability and adaptability at the centre of Samoa's macroeconomic framework.

In addition, Samoa's policy direction reflects a shift from post-pandemic recovery under PDS1 towards strengthening long-term macroeconomic resilience amid ongoing global tensions. While the economy has gradually rebounded, these challenges have reinforced the need to build a more self-sustaining and shock-resilient economy. The Government is therefore focused on strengthening macroeconomic fundamentals through disciplined fiscal and monetary policies that support stability and sustainable growth.

These efforts are complemented by targeted Government initiatives such as the expansion of the District Development Programme, tax relief measures, adjustments to the minimum wage, and broader family and community-based development approaches aimed at strengthening household resilience and supporting domestic economic activity. Continued investment in productive sectors, infrastructure, and Samoa's ability to successfully host major regional and international events, further reflect ongoing efforts to sustain economic growth and strengthen resilience amidst evolving external conditions to which Samoa is particularly vulnerable. Agencies including the Ministry of Finance, Central Bank of Samoa, Ministry of Revenue, Ministry of Customs and Samoa International Finance Authority continue to support these priorities through fiscal management, monetary policy, revenue administration, and strengthened regulatory compliance.

This Key Priority Area aligns with SDG 8: Decent Work and Economic Growth and SDG 9: Industry, Innovation and Infrastructure. It also contributes to the 2050 Strategy for the Blue Pacific Continent under Thematic Area 4: Resource and Economic Development, through efforts to strengthen economic resilience, financial stability, and sustainable development.

Expected Outcome 3.1: Sustained Economic Performance



PC: Central Bank of Samoa

Samoa's economic performance will be sustained through prudent fiscal management including debt management, strengthened domestic revenue mobilisation, and ongoing innovation in fiscal policy. By improving compliance and embedding efficiency into revenue systems, as well as developing its domestic market, Samoa will gradually reduce its reliance on external financing and create greater fiscal space to fund national priorities.

This outcome directly supports the Government's target of 3 percent average annual economic growth, at least 30 percent overall expansion in domestic revenues by the end of the PDS2 period, and a programme of innovation driven reforms designed to stimulate productive economic activities across key sectors. In tandem, the effective administration and monitoring of the price level of goods and services will continue, alongside monetary policy measures to maintain inflation within the targeted level of 3 percent.

Furthermore, ongoing reforms to strengthen revenue administration and improve tax compliance remain vital in supporting domestic revenue mobilisation and long-term fiscal sustainability. The Ministry of Revenue continues to advance digital initiatives such as the Tax Invoice Monitoring System (TIMS), which is expected to improve the efficiency, transparency, and monitoring of revenue collection processes. These efforts also support the cross-cutting priority of digital transformation by strengthening compliance systems, improving data management, and enhancing overall public financial administration.

Expected Outcome 3.2: Safeguarded External Position



PC: Samoa Observer

This outcome focuses on positioning Samoa to better withstand external economic shocks through sound monetary and financial management. In support of the efforts towards sustained economic performance, emphasis is placed on maintaining a vibrant domestic financial market and the sound management of foreign reserves. Key priorities include maintaining and strengthening the management of foreign reserves to ensure adequate import cover, as well as enhancing enforcement of anti-money laundering efforts and reinforcing compliance frameworks including the assessment of new initiatives such as crypto currency. Together, these measures will help contribute to a stable and credible external position that supports investor confidence and financial system integrity.

With Samoa's debt distress rating improved from high to moderate debt distress, the Government will maintain its proactive approach to debt distress complemented by the efforts in Samoa's Medium Term Debt Strategy. The Government will continue to closely monitor its debt position, focusing on public investments that are financially sound and economically viable, in support of long-term economic sustainability.

Developments that are informed by evidence-based analyses will be prioritised, maintaining targeted medium term thresholds – reinforcing Samoa's credibility and supporting a stable and resilient external position.

KEY PRIORITY AREA 4: COMMUNITIES' ECONOMIC EMPOWERMENT



PC: Government of Samoa

This Key Priority Area takes an integrated approach to community development and empowerment. The Government is committed to developing the economic self-reliance, wellbeing and resilience of communities, driven by the flagship program that is the District Development Programme (DDP). It brings together economic opportunity, social protection, and a more robust DDP to ensure that communities across Samoa have the tools, resources and support they need to build lasting self-reliance.

The outcomes herein contribute to the 2030 Agenda for Sustainable Development by reinforcing inclusive economic participation, reducing structural vulnerabilities and strengthening livelihood security and social protection systems that enable more equitable development outcomes. This also reflects the 2050 Strategy for the Blue Pacific Continent, by prioritising resilient and self-reliant communities and strengthened human development outcomes. Additional linkages can be made to the focus on locally driven economic development that enhances the ability of communities to anticipate, absorb and recover from shocks while sustaining long-term wellbeing.

Expected Outcome 4.1: Improved Household Income and Living Standards



This outcome promotes the creation of sustainable income-generating opportunities, with a particular focus on women and marginalised groups. It supports sector-specific initiatives that can be delivered through the DDP and promote grassroots development. Communities are encouraged to consider more investments in income generating activities that build on the foundational economic empowerment intent of the DDP, including agriculture and fisheries, eco- and cultural tourism, and sports development.

Key initiatives aimed at improving household incomes include the revival of the First Harvest programme and ongoing replanting schemes through the Agriculture and Fisheries Sector, complemented by initiatives implemented by such partners as the Women in Business Development Incorporated (WIBDI), the Samoa Farmers Association, Tautai Samoa Association, the Samoa Business Hub and other NGOs. Such initiatives facilitate the promotion of youth and women-led entrepreneurial platforms, the cultivation of cultural resources, and climate resilience. Labour mobility continues to be an alternative avenue for improved household income and employment. In this planning cycle, the Government will take a more balanced approach to the implementation of the current schemes (Pacific Australia Labour Mobility Scheme and the Recognised Seasonal Employer Scheme), better ensuring economic gains do not come at the cost of the breakdown of social structures. These avenues are intended to provide temporary employment opportunities particularly for unskilled workers, with direct benefits in terms of remittance flows and the skilling of our people who upon reintegration, can contribute to Samoa's labour force.

The establishment of the new Samoa District Development Authority will facilitate more effective governance, implementation and monitoring of the DDP – strengthening its intended impact of being the vehicle through which more families can have reliable incomes and better living standards. The aim is to improve the quality of life for all in a way that is community-owned and led, inclusive and lasting. This approach encourages families to be more self-sufficient and promotes food security, reflective of the Government's commitment to alleviating hardship.

Expected Outcome 4.2: Enhanced Support and Protection for the Most Vulnerable



PC: Ministry of Women, Community and Social Development

Communities across Samoa face a range of unavoidable vulnerabilities, including natural disaster risks, volatile market demand, and fluctuating labour supply. The Government is committed to the protection of the livelihoods of the most vulnerable members of society by ensuring communities are resilient to shocks and that economic gains are preserved and remain sustainable over time. This includes the strengthening of social protection frameworks and ensuring adequate access to basic services, so that no community is left behind as Samoa pursues broader economic growth.

The establishment of the new Ministry of Family and Social Affairs highlights an integrated approach to family development – promoting gender equality and social inclusion that encompasses men, women, youth and children. The Government remains committed to providing adequate support through targeted social protection measures. Existing support measures and programs will be continued and in some instances increased, in response to the evolving needs and vulnerabilities of our people. These include the Disability Benefit Scheme, the Senior Citizens Pension Scheme, Shelter Financing for vulnerable households, and concessional lending facilities through the Samoa Housing Corporation for first homeowners and low-income households. Furthermore, grants to Non-Government Organisations including those to Aged Care Homes and the Samoa Victim Support Group will continue to be provided, as will universal access to public healthcare services. Primary and Secondary education will also continue to be funded through the One Government Grant, channelled via the District Councils to ensure more effective implementation and complementarity of the education initiatives under the DDP.

Additionally, the new Child Well-being Benefit will add to related services provided under the Early Childhood Development Framework, further building the full suite of targeted interventions for the most vulnerable groups and reaffirming Government's commitment to life-cycle, womb-to-tomb care.

KEY PRIORITY AREA 5: PRIVATE SECTOR DIVERSIFICATION



PC: Government of Samoa (FERO Samoa)

The Government remains committed to the sustainable growth of private sector businesses, with an emphasis on diversifying the avenues through which this growth is realised. The performance of key productive sectors including tourism, agriculture and fisheries, and manufacturing will be tracked, as well as emerging sectors such as sports, to determine the effectiveness of policy interventions. This will be complemented by efforts to create more job opportunities and expand the capacity of export-oriented businesses.

This Key Priority Area (KPA) responds directly to challenges identified in the PDS1 Mid-Term Review, including declining business registrations, fluctuating export performance, and gaps in micro, small, and medium enterprise (MSME) data. It emphasises dynamic business innovation to support adaptability and diversification in a rapidly changing economic environment, with creativity and technology as key drivers of competitiveness. Sustainable growth is prioritised to ensure long-term resilience, in line with Government commitments and relevant Sector Plan objectives. The Government is committed to creating an enabling business environment with direct implications for employment, investment, and economic diversification.

Outcomes under this KPA are aligned to Samoa's regional commitments, namely Thematic Area 4: Resource and Economic Development of the 2050 Strategy for the Blue Pacific Continent; and to global commitments under Sustainable Development Goals 8, 9 and 12 on decent work, industry and innovation, and responsible consumption and production.

Expected Outcome 5.1: Dynamic Business Growth and Innovation



PC: Greenology Samoa Limited

This outcome lays the foundation for long-term growth by making businesses stronger, more competitive, and better equipped to adapt to economic shocks. It moves beyond efficiency to incorporate innovation and diversification, both of which are critical given the economic volatility experienced in recent years.

By improving innovation across key productive sectors including tourism, manufacturing, agriculture and fisheries, Samoa creates a stable platform for growth and investment. This aligns with Government priorities to improve access to finance, strengthen investment facilitation, and leverage international and diaspora

contributions to national development. The Government will continue its provision of concessional lending facilities through the Development Bank of Samoa (DBS) and Samoa Business Hub (SBH) to expand MSME lending and develop tailored financial products for women-led enterprises, youth entrepreneurs, businesses operating in rural and outer-island communities, and export-oriented businesses. Investment facilitation will also be strengthened for both foreign enterprises as well as the diaspora community, recognising the significant capital flows available to Samoa through its communities overseas and the potential to channel these resources into national development. Investment policy settings, including the frameworks governing foreign direct investment and other investment schemes will be reviewed to ensure they are consolidated, competitive and clearly communicated to prospective investors.

Central to achieving this outcome is deliberate action to lower the cost of doing business and strengthen the enabling environment for enterprise at every scale; in recognition of the persistent constraint on private sector growth in Samoa being the relatively high cost of doing business. At the sector level, the Government will pursue a programme of regulatory reform designed to reduce the time and cost associated with business registration, licensing, and ongoing compliance – with particular attention to the burdens faced by micro, small, and medium enterprises that lack the administrative capacity to absorb high compliance costs. Reforms will be guided by evidence drawn from direct engagement with the private sector through the Samoa Chamber of Commerce and Industry (SCCI), through sustained and structured public-private dialogue. Taken together, these reforms will improve Samoa’s investment climate, lower the barriers to entrepreneurship, and create the stable, competitive foundation on which growth in tourism, agriculture, fisheries, manufacturing, information and communications technology (ICT) and other productive sectors depends.

Expected Outcome 5.2: Increased Employment and Export Opportunities



This outcome directly addresses concerns about employment decline and trade volatility, with a specific emphasis on tourism development, agricultural and fisheries commercialisation, manufacturing growth and emerging service exports. It supports the Government’s commitment to export facilitation, job creation, and tourism industry promotion and earnings, while aligning with Sector priorities on market access, workforce development, and digital infrastructure for trade.

In agriculture and fisheries, targeted support will be placed on increasing domestic production, value-added processing, and export readiness. The recent establishment of the Atele Pack House and the Agriculture Mechanisation Project highlight Government’s commitment to expanding commercial opportunities for farmers, fishers, and agri-businesses that will in turn position the Sector as a stronger contributor to exports and employment. The split of the Ministry of Agriculture and

Fisheries (MAF) into the Ministry of Agriculture and the Ministry of Fisheries and Marine Resources is also indicative of the Government's commitment to unlocking the productive potential of agriculture and fisheries as key drivers of economic diversification. Realising these opportunities depends on the implementation of the Agriculture and Fisheries Sector Plan. Key initiatives include building a capable biosecurity system, strengthening value chains, delivering effective advisory and extension services, expanding inshore and offshore fishing capacity, and improving post-harvest infrastructure. At the national level, these efforts will position agriculture and fisheries as a competitive, climate-resilient, and commercially dynamic sector that contributes meaningfully to Samoa's sustainable private sector growth agenda.


Tourism is now recognised as an integral part of the Trade, Commerce and Manufacturing Sector with its contributions recognised in foreign exchange earnings, employment and economic diversification. Continued investment will focus on increasing visitor arrivals and earnings, and broadening the range of tourism products based on Samoa's natural and cultural advantages including eco-tourism, cultural tourism, community-based tourism, and sports tourism. Growth in tourism will be achieved through a renewed focus on marketing and product development, driven by sustainability and an integrated approach to tourism development that will leverage collaboration with industry partners and the District Development Programme.

The establishment of Sport and Recreation as one of Samoa's key sectors, highlights the Government's recognition of sport for development and economic diversification. The Government will leverage Samoa's strong international sporting profile to create employment and export opportunities through sports tourism, hosting regional and international events, and supporting sports-related enterprises. The Government's financial commitment is reflected in the increased provision for the Sports Development Fund that will support sports development at the grass roots, district, and national levels as well as exposure to international sporting events. This will establish sports as a complementary growth sector with spill-over benefits for tourism, retail and transport.

The Government's strategic focus on increasing employment and exports across key industries reflects a coordinated approach to strengthening Samoa's economic resilience and long-term sustainability. These investments aim to position Samoa to address employment challenges while diversifying sources of growth and foreign exchange earnings, through strengthened partnerships and the implementation of key Sector Plans.

KEY STRATEGIC OUTCOME 3 TRUSTED GOVERNANCE, RULE OF LAW AND SECURITY

“Aua le pō’ia Faleolo, sua le mulipou ae saili le i’a a le ali’i”



KEY PRIORITY AREA 6
SOCIAL JUSTICE

EXPECTED OUTCOMES

- SAFER COMMUNITIES
- EQUITABLE ACCESS TO JUSTICE & DEMOCRACY



KEY PRIORITY AREA 7
WORKFORCE DEVELOPMENT

EXPECTED OUTCOMES:

- SKILLED WORKFORCE
- EFFECTIVE PUBLIC SERVICE



KEY PRIORITY AREA 8
STRATEGIC DIPLOMACY & NATIONAL SECURITY

EXPECTED OUTCOMES

- ENHANCED BORDER SECURITY & CYBERSECURITY
- ELEVATED DIPLOMATIC RELATIONS & GLOBAL INFLUENCE

KEY STRATEGIC OUTCOME 3: TRUSTED GOVERNANCE, RULE OF LAW AND SECURITY

KEY POLICY INITIATIVES

- National Workforce Plan 2025/26 – 2039/40
- National Security Policy 2024 for a Resilient Samoa
- Expansion of the scope of Legal Aid services
- Say No to Illegal Drugs Nationwide Campaign
- Enactment of the Drugs Act and Arms Law to replace former legislations.
- Introduction of the Privacy and Online Safety Law
- Expansion of court services in Savaii
- Modernisation of the electoral system for out-of-country voting for Samoan citizens

Building trusted governance, upholding the rule of law and strengthening national security are essential foundations for Samoa's long-term stability. The Government is committed to fostering a safe, just and inclusive society where public institutions operate with integrity, communities are protected, and all Samoans have equitable access to justice, opportunities and democratic participation.

Drawing from the lessons and progress of PDS1, this Key Strategic Outcome focuses on strengthening governance systems and public confidence through coordinated investments in social justice, workforce capability, diplomacy and security. It recognises that effective governance depends not only on strong institutions and legal frameworks, but

also on empowered communities, ethical leadership and a capable workforce that can deliver responsive and equitable services across the country.

This Key Strategic Outcome brings together the work of the Law and Justice, Community, Public Administration, and Sport and Recreation Sectors. Through cross-sectoral and collaborative efforts, the Government will continue to strengthen accountability, transparency and inclusive access across public institutions, and address the social challenges that are rapidly affecting the safety of our communities. Workforce development will also be prioritised through the implementation of the new National Workforce Plan. Recognising evolving regional and global challenges, Samoa will also strengthen diplomacy, regional cooperation, international engagement and national security, to protect national interests and enhance resilience.

KEY PRIORITY AREA 6: SOCIAL JUSTICE



PC: Radio Samoa Auckland

The Government is committed to building a unified, safe and just society where the rights and dignity of all people are respected and protected. This Key Priority Area focuses on fostering social justice by strengthening community safety and meaningful engagement at every level, from national institutions to villages and families. It brings together effective law enforcement, robust legal frameworks and a shared commitment to human rights and the rule of law, ensuring that justice is accessible to all Samoans.

Samoa continues to face critical development challenges such as the rising prevalence of drug use and drug-related crime. Central to this KPA is the protection of the public from harm, inequity and uneven service delivery. It recognises the importance of ensuring that all individuals and communities, regardless of location or circumstance benefit from fair, consistent, and accessible safety and justice systems. This KPA also underscores the need to create and maintain strong legal frameworks alongside traditional decision-making systems. It acknowledges and honours the vital role of village governance structures and faith-based organisations in promoting community safety, harmony and peace. These systems remain essential in shaping culturally grounded approaches to conflict resolution, prevention, and social cohesion.

Furthermore, this priority area highlights the importance of strengthening community institutions and public agencies to administer the law fairly, transparently, and in the public interest. By reinforcing integrity, accountability and service delivery across institutions, Samoa can ensure that peace and harmony prevail nationwide. These efforts are further supported with the integration of cross-cutting priorities particularly Gender Equality, Disability and Social Inclusion (GEDSI), better ensuring that safety and justice systems are inclusive and protective of all.

The outcomes herein are aligned to Thematic Area 3 (Peace and Security) of the 2050 Strategy for the Blue Pacific Continent and SDG 16: Peace, Justice and Strong Institutions. These outcomes are guided by key national frameworks, primarily the National Security Policy 2024 (Resilient Samoa) and the National Legal Aid Policy 2025. These overarching policy initiatives ensure that safety and justice efforts are integrated to protect sovereignty and reinforces the rule of law.

The outcomes herein are aligned to Thematic Area 3 (Peace and Security) of the 2050 Strategy for the Blue Pacific Continent and SDG 16 which advocates for Peace, Justice and Strong Institutions. These outcomes are guided by key national frameworks, primarily the National Security Policy 2024 (Resilient Samoa) and the National Legal Aid Policy 2025. These overarching policy initiatives ensure that safety and justice efforts are integrated to protect sovereignty and reinforces the rule of law.

Expected Outcome 6.1: Safer Communities



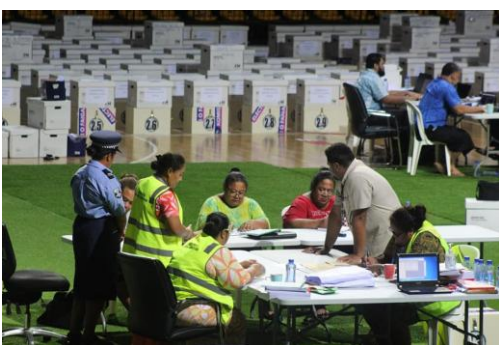
PC: Government of Samoa

This outcome prioritises strengthening community-based safeguards across prevention, reporting, response and reintegration systems to address critical social challenges, including domestic violence, gender-based violence, and drug use and abuse. This will be supported by Government’s commitment to genuine partnerships and engagement through which targeted interventions and programs will be implemented.

Legislation will be reviewed and updated to ensure robust legal frameworks are in place to safeguard the people of Samoa. The Law and Justice Sector has initiated work to have in place by the end of the PDS2 period, a Drugs Act to replace the Narcotics Act 1967, the Arms Law to replace the Arms Ordinance 1960, and the introduction of a new Privacy and Online Safety Law. This will be complemented by improved crime management systems to meet evolving national demands, emphasizing the upgrade of policing systems, tools and correctional facilities to enhance operational efficiency and effectiveness. Community policing through established outposts will also be strengthened, as will the capacity of police officers. This enhancement of competency and professionalism will be facilitated through the Samoa Police Academy, with the provision of structured programs in law enforcement, ethics, community policing and operational skills.

Greater emphasis is placed on early intervention and prevention strategies rooted in community engagement, cultural values and spiritual development. Partnerships with faith-based organisations and other non-government organisations, village councils and the wider community are essential in delivering coordinated and culturally responsive interventions. Further efforts under this outcome aim to strengthen community awareness and prevention programs in partnership with the Community Sector through initiatives such as the Pola Puiptui National Prevention Framework for Ending Gender-Based Violence. This is in addition to efforts to improve reporting mechanisms and victim support systems. Sector level priorities will be supported to enhance coordinated response services across Law and Justice Sector agencies, and strengthen rehabilitation and reintegration initiatives for offenders and affected individuals.

Expected Outcome 6.2: Equitable Access to Justice and Democracy



PC: Office of the Electoral Commission

This outcome focuses on expanding the reach of Samoa’s justice and democratic systems, ensuring that legal representation and civic participation are inclusive, equitable and protective of human rights. This includes initiatives to address barriers that limit access to legal services and to safeguard constitutional rights through fair and timely legal processes. Key initiatives include the expansion of court services in Savaii to ensure safety and justice are geographically accessible to all as well as the effective implementation of the three-tier structure of the Lands and Titles Court. This reaffirms the Government’s commitment to balancing formal legal systems with

traditional governance structures, while prioritizing fairness, inclusion and the wellbeing of all Samoan communities.

To foster a more equitable society, the Government will promote alternative conflict resolution by institutionalising mediation within the Family, Youth and Lands and Titles Courts which provides culturally sensitive pathways to justice. Key areas of focus include expanding access to legal aid and representation, specifically aiming to increase the number of approved applications for legal assistance and strengthening institutional capacity to deliver justice fairly and efficiently. This increased accessibility is reflected in the recent expansion of the scope of legal aid services to include cases at the District Court, Youth Court, Family Court and Court of Appeal.

Focus will also be placed on strengthening national mechanisms for human rights, with efforts led by the Office of the Ombudsman towards compliance with good governance standards and the rule of law. Initiatives include improved complaints resolution measures within public agencies and disciplinary forces. The modernisation of the electoral system will also be pursued, including the expansion of overseas voting for Samoan citizens to better ensure that all citizens can participate in Samoa's democratic future.

KEY PRIORITY AREA 7: WORKFORCE DEVELOPMENT



Like many small island developing states, Samoa faces persistent labour force constraints, including mismatched skills, limited opportunities for decent work, and challenges in retaining qualified personnel within the public service. These constraints directly affect the Government's ability to deliver high-quality and equitable services to all Samoans, particularly at the district and community levels.

Recognizing this reality, this Key Priority Area affirms the importance of building a capable national workforce, both at the national level and through strengthened District Councils and community-based organisations. To achieve this, the Government will take measures through its National Workforce Plan 2025/26 - 2039/40 to ensure that the skills gap is met and opportunities are shared across the public service and private sector. The overarching goal is a fair and resilient labour market, supported by a people-centred public administration that earns the trust and confidence of the communities it serves. Workforce development efforts will extend across all levels of Government to ensure that service delivery is consistent, accessible and responsive to community needs.

This responds directly to the development challenges of labour force constraints and governance, and is in alignment with the regional Thematic Area of Political Leadership and Regionalism in the 2050 Strategy for the Blue Pacific Continent. At the global level, these outcomes are linked to the SDG 16: Peace, Justice and Strong Institutions and SDG 17: Partnerships for the Goals.

Expected Outcome 7.1 Skilled Workforce



A skilled and agile workforce is the engine of any effective public administration. To achieve this, the Government will focus on targeted and strategic investment in human capital, ensuring that education and training are directly aligned with Samoa's current and future workforce needs. Actions will centre on the full implementation of the National Workforce Plan (NWP), supported by the central role of the Samoa Qualifications Authority and ongoing collaborations with PSET providers – including technical vocational schools and higher education institutions – and industry

bodies to keep curricula current and relevant. The promotion and facilitation of vocational and technical pathways, alongside the continuous upskilling of the current workforce, remains part of the Government's commitment to dynamic workforce development. In this regard, the Samoa Police Academy will continue to serve as a national training hub for law enforcement personnel, with the potential to expand into a recognised regional centre for accredited police training across the Pacific region.

Strengthening education-to-employment pathways is a critical area. The Government will therefore deepen structured university engagement led by the Scholarship Committee to ensure that graduates are job-ready and that scholarships translate directly into national capacity gains. Furthermore, workforce development will reach all levels of Government, including the District Development Offices, thereby building local service delivery capacity that is equitable and genuinely responsive to community needs.

This commitment is reinforced by Samoa's National Quality Policy, which provides the quality assurance framework for training provision and service standards across the public sector and nation as a whole.

Expected Outcome 7.2: Effective Public Service



Public trust is not given, it is earned through consistent, fair, transparent and responsive service delivery. Recognizing this, the Government is dedicated to building lasting public confidence in Government services. This involves setting clear and published service standards, valuing and actively supporting public servants, and upholding the highest levels of integrity and ethical conduct across the public administration. Public servants at all levels will be supported through fair performance management, professional development opportunities, and mechanisms that recognize and reward exemplary service.

To achieve this, the Government will directly address fraudulent and corrupt practices by reinforcing institutional accountability, strengthening internal audit functions, and ensuring the full implementation of the National Anti-Corruption Policy and Strategy 2024/25 – 2028/29. The independence and capacity of institutions such as the Ombudsman Office and Audit Office will be reinforced to support the investigation of complaints, oversight of public administration, and protection of public interest. Samoa will continue to align its anti-corruption frameworks with international standards and regional commitments.

Citizens and communities will be engaged as active partners in monitoring service quality, with accessible feedback channels and timely redress for complaints. Particular attention will be given to ensuring that service delivery is equally accessible to remote communities, persons with disabilities, women, youth, and other vulnerable groups. By embedding a culture of transparency, responsiveness, and ethical leadership, the Government aims to rebuild and sustain the trust that underpins an effective public service for all Samoans.

KEY PRIORITY AREA 8: STRATEGIC DIPLOMACY AND SECURITY



PC: Government of Samoa

Samoa will strengthen its voice and influence on the world stage through proactive diplomacy and strategic international partnerships. By building strong bilateral and multilateral relationships, the Government aims to protect its national interests and unlock sustainable opportunities that support long-term development.

This Key Priority Area encompasses national security efforts, aligned to Samoa's National Security Policy and Implementation Strategy 2024, including the protection of the security and resilience of Samoa's digital systems and improving data governance practices. Also prioritised is Samoa's foreign engagement strategies and development partner coordination. These efforts respond to a range of evolving development challenges that affect Samoa's international engagement and security environment. These include constraints in governance and coordination capacity, emerging threats associated with drug-related crime, and the growing need to strengthen cybersecurity and digital resilience as Samoa continues to advance its digital transformation.

By strengthening international partnerships, enhancing institutional coordination, and building resilience against emerging global and regional threats, Samoa will continue to safeguard its sovereignty, uphold its national interests, and position itself as a proactive and respected member of the international community. This Key Priority Area is aligned with the Sustainable Development Goals, particularly SDG 17 on Partnerships for the Goals and is consistent with the regional priorities under the 2050 Strategy for the Blue Pacific Continent, notably Thematic Area 1: Political Leadership and Regionalism, supporting Samoa's commitment to regional cooperation, security, and international engagement.

Expected Outcome 8.1: Enhanced Border Security and Cyber Security



PC: Government of Samoa

At the national level, the Government is committed to strengthening the protection of its borders – both physical and digital. The illegal importation of goods including drugs and other illicit substances will be the focus of security measures, with dedicated investments and collaboration across sector stakeholders. These measures are implemented under a broader border security and drug interdiction programme, which includes the deployment of advanced drug detection and screening equipment, supported by specialised training for frontline officers to improve the identification and interception of illicit substances at the border. These measures are complemented by

enhanced inspection and enforcement operations at Faleolo International Airport, sea ports and cargo facilities, including the use of dual-view X-ray technology and strengthened border operations to counter drug trafficking and other cross-border threats.

Samoa will strengthen national security through diplomacy-driven regional and international cooperation to enhance intelligence sharing, transnational crime prevention, joint border and law enforcement operations to improve risk detection, and coordinated responses to emerging security risks.

National efforts will also prioritise safeguarding sensitive information, mitigating cyber threats, and ensuring that data is stored, shared and used responsibly. These efforts are guided by the implementation of Samoa's National Cybersecurity Strategy 2025/26 – 2030/31 and the Information Security Policy 2024, which strengthen whole-of-government cyber governance, threat detection and response arrangements, and standards for protecting digital systems and data. Key priorities will include strengthening national cyber incident response capabilities, building on the role of the Samoa Computer Emergency Response Team (SamCERT); implementing government-wide cybersecurity standards, regular security audits and threat reports of critical systems and infrastructure. Public digital literacy and cybersecurity awareness programmes targeting citizens, businesses and public servants will also be expanded to promote safer digital practices and build confidence in digital systems.

These measures are designed to strengthen public trust in digital systems and promote safe, secure and reliable digital engagement across Government, businesses and the wider community.

Expected Outcome 8.2: Elevated Diplomatic Relations and Global Influence



PC: PacificAus Sports

Samoa's international representation will be prioritised as part of the Government's commitment to elevating its diplomatic relations and global influence. This encompasses Samoa's participation in international conventions and agreements, the effective coordination of development cooperation partnerships and Official Development Assistance (ODA) aligned to national priorities, and the strategic positioning of the nation's sporting presence within the region and internationally. Through proactive and strategic diplomacy, Samoa will continue to strengthen its global influence, mobilise resources for sustainable development and advance national interests.

As a Small Island Developing State highly vulnerable to the impacts of climate change, climate diplomacy remains one of Samoa's most important international priorities. The Government will continue to advocate strongly for ambitious global emissions reductions, increased and accessible climate finance, and stronger recognition of loss and damage experienced by Small Island Developing States. Trade and economic diplomacy will focus on maximising the benefits of existing regional and international trade arrangements,

including PACER Plus and other preferential trade agreements. Cross-sectoral efforts will also continue to strengthen engagement with traditional and emerging development partners to diversify cooperation opportunities and reinforce economic resilience.

The Government will strengthen Samoa's diplomatic presence and international engagement through the strategic placement and development of skilled diplomats, improved whole-of-government coordination of foreign policy priorities, and deeper engagement with regional and international organisations. Particular emphasis will also be placed on strengthening relationships with the Samoan diaspora in New Zealand, Australia, the United States and elsewhere, recognising the important role diaspora communities play in advocacy, cultural preservation, investment, tourism promotion and national development.

With the development of the Sport and Recreation Sector, the Government acknowledges Samoa's distinguished and globally recognised sporting heritage, which has earned the nation disproportionate visibility and soft influence on the world stage. This reputation constitutes a genuine national asset that the Government is committed to developing, systematically and sustainably, as a contributor to Samoa's broader economic growth and international profile. This commitment is reflected in the establishment of a dedicated Ministry of Sport and Recreation, which has been recognised by International Federations as a signal of Government intent and strategic investment in sport.

For professional and elite sports, national efforts will focus on maintaining and expanding Samoa's participation and competitiveness in regional and international competitions, including the Pacific Games, Commonwealth Games, Olympic Games, as well as in international rugby, boxing, weightlifting and other sports. National efforts will also emphasise sustained excellence and competitive performance by Samoan athletes and sporting organisations at regional and international levels, reinforcing Samoa's reputation as a respected and high-performing sporting nation. The economic and diplomatic value of elite Samoan athletes competing internationally, including their contribution to tourism marketing and diaspora engagement will be recognised and leveraged through structured athlete ambassador programmes. These efforts will be further detailed in the forthcoming Sport and Recreation Sector Plan, with a particular focus placed on strengthening women's elite sports pathways, recognising both the athletic talent present in Samoa and the national pride and gender equality benefits that women's sporting success delivers.

KEY STRATEGIC OUTCOME 4 SAFEGUARDED CLIMATE-RESILIENT ENVIRONMENT

“Moe i le ufu ae to’ a i le paipai”



KEY PRIORITY AREA 9
ENVIRONMENTAL PROTECTION,
RESTORATION & CONSERVATION

EXPECTED OUTCOMES

- STRENGTHENED ENVIRONMENTAL RESILIENCE & SUSTAINABILITY
- ENHANCED DISASTER READINESS



KEY PRIORITY AREA 10
RENEWABLE ENERGY TRANSITION

EXPECTED OUTCOMES:

- BALANCED ENERGY MIX

KEY STRATEGIC OUTCOME 4: SAFEGUARDED CLIMATE-RESILIENT ENVIRONMENT

KEY POLICY INITIATIVES

- Expansion of waste management initiatives
- Implementation of Samoa's Third Nationally Determined Contributions (NDC 3.0)
- National water security through watershed management and adaptive planning under the National Drought Policy
- Diversification and expansion of energy access and the energy mix through storage and transmission initiatives
- Renewable energy projects – solar farms
- Implementation of the Samoa Ocean Strategy 2020 – 2030
- Implementation of the Samoa Environment Youth Engagement Framework 2026 – 2029

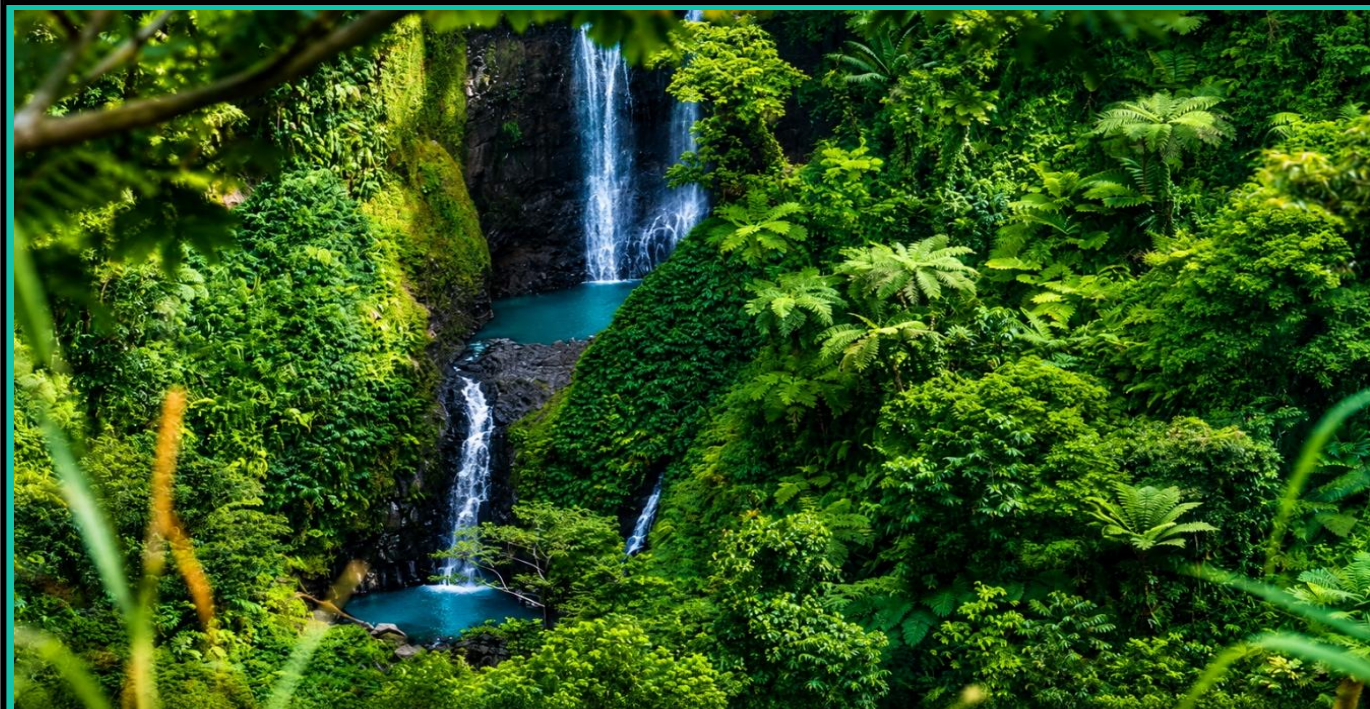
Samoa is one of the most climate-vulnerable nations in the world and the health of its environment directly shapes the health and livelihoods of its people. Ecosystem degradation, water insecurity, waste management challenges, and the increasing frequency of extreme weather events are real and urgent threats.

The Government remains committed to strengthening environmental resilience and sustainability through the enforcement of national safeguards, sustainable waste management and the protection and restoration of our natural resources and ecosystems. The intention is for Samoa to have healthier and more productive ecosystems that communities can depend on for

generations. The Government will also invest in early warning systems and community-level disaster preparedness to build resilience to natural disasters and climate change. No community will be left without the means to respond when disaster strikes.

This KSO also highlights the continuous national efforts aimed at accelerating the transition towards renewable energy infrastructure usage and energy efficiency. The Government continues its commitment towards increased renewable energy generation capacity for electricity, and fuel efficiency within the Transport sector specifically, contributing to Samoa's Nationally Determined Contributions (NDC) target for emissions reductions. The promotion and enforcement of the importation and usage of energy efficiency appliances contributes also to the emissions reduction target.

KEY PRIORITY AREA 9: ENVIRONMENTAL PROTECTION, RESTORATION AND CONSERVATION



As a small island nation, Samoa is highly vulnerable to the impacts of climate change and disasters, including rising sea levels, increasing cyclone intensity, prolonged droughts, and coastal erosion. These environmental pressures, combined with challenges of ecosystem degradation, invasive species, and unsustainable waste management, threaten the livelihoods, health, and cultural heritage of our communities. Recognising this reality, the Government is committed to a safeguarded environment as the foundation for national well-being and sustainable development. This Key Priority Area directly responds to the development challenge of Samoa’s vulnerability to natural disasters, while also playing an integral part in ongoing national efforts to address the existential threat of climate change. To ensure these efforts are sustained across generations, the Government will continue to implement the recently launched Samoa Environment Youth Engagement Framework 2026 – 2029, which strengthens youth participation in safeguarding the environment.

A climate-resilient environment is one in which natural and human-managed systems can withstand, adapt to, and recover from the impacts of climate change, while continuing to protect biodiversity and sustain the natural resources that support life and livelihoods. It represents a proactive approach that combines environmental protection, adaptation, mitigation, and long-term sustainability. To guide and coordinate action, the Government will establish a clear national framework for coordinated environmental action, with Sector Plans providing the technical detail required for effective implementation. These collective efforts will be complemented by sector-wide integration of climate change resilience as a cross-cutting priority. These outcomes align with the Ocean and Environment thematic area of the 2050 Strategy for the Blue Pacific

Continent, reinforcing Samoa’s regional commitments to ocean health, environmental stewardship, and collective resilience. Alignment is also made to the Sustainable Development Goals 11 to 15.

Expected Outcome 9.1: Strengthened Environmental Resilience and Sustainability



PC: MNRE (Tree Planting)

Effective environmental governance is the foundation upon which ecosystem restoration and biodiversity conservation depend. To achieve strengthened environmental resilience, Samoa will directly address the enforcement and compliance gaps identified in the Mid-term Review report for PDS1 and the State of the Environment Report 2023. Regulatory oversight and enforcement will be prioritised and measured at the national level, placing compliance at the centre of Samoa’s approach to environmental sustainability and building on the foundations established through the ongoing work of

the Environment Sector. The Government will continue to strengthen and enforce environmental safeguards through rigorous environmental impact assessments and improve land-use planning to reduce the risks associated with uncontrolled development. Land management will also be prioritized through the consolidation of Government lands and scoping of opportunities for the productive use of these resources.

Addressing waste management is essential to this outcome. Recognising the challenges of limited landfill capacity and inadequate oversight of hazardous waste, the Government will promote effective waste disposal systems and green economic opportunities by encouraging recycling, resource recovery, and waste-to-energy initiatives. The Government will continue to support and expand initiatives in partnership with associations of recyclers, including container deposit schemes and “return and pay” mechanisms, complemented by the Waste Levy and ban on priority single-use plastics to reduce litter and increase recovery rates of recyclable materials.

Building on these governance and waste management efforts, the Government will pursue the active restoration of terrestrial, coastal, and marine ecosystems alongside the effective control of invasive species. This responds directly to documented biodiversity loss, land degradation, the noted decline in mangrove coverage, and community engagement in conservation efforts. The Government continues to prioritise a ridge-to-reef restoration approach, recognising the critical interconnection between upland, coastal, and marine ecosystems and the role each plays in overall environmental health and community resilience. Through the implementation of key policies and strategies – including the Samoa Ocean Strategy 2020 – 2030, and the National Biodiversity Strategy and Action Plan 2025 – 2030 – the Government will ensure the restoration and conservation of Samoa’s unique biodiversity and ecosystems.

Water security is integrated at the national level through catchment-based watershed management and adaptive planning to reduce the risks of droughts and floods, as guided by the National Drought Policy 2025 – 2035. The focus moves beyond passive conservation towards active ecosystem restoration. Together, these efforts will protect Samoa’s natural environment for future generations and significantly reduce long-term environmental and economic costs associated with species loss, land degradation, and water insecurity.

Expected Outcome 9.2: Enhanced Disaster Readiness



PC: Samoa Fire & Emergency Services Authority (SFESA)

Building robust disaster readiness requires a cohesive national effort that strengthens both emergency response capabilities and preparedness systems. Samoa will consolidate its efforts across national and community levels to ensure timely and effective action in times of disasters. At the international level, the Government will continue to advocate strongly on the severe impacts of climate change to our small island nation, recognizing it as an existential threat to national development and community well-being. The Government aims to enhance Samoa's capacity to anticipate, absorb, and recover from climate-related events and natural hazards through

adaptation, loss and damage frameworks and mitigation efforts, including the implementation of Samoa's 3rd Nationally Determined Contributions and current efforts towards a Carbon Credit Assessment and Policy.

To achieve this, the Government is committed to expanding the coverage of its early warning systems and sustaining community-level preparedness mechanisms through Community Disaster and Climate Risk Management (CDCRM) programmes. This will be complemented by ongoing partnerships with key emergency response agencies, in the conduct of awareness and capacity building initiatives. These efforts will ensure that all communities, including those in rural and remote areas are equipped to respond effectively when disaster strikes. The Government will also ensure strategic implementation of the PREPARE project to further strengthen Samoa's disaster readiness, response coordination, and long-term adaptive capacity.

The National Adaptation Plan, will through the second phase target the updating of Community Integrated Management (CIM) Plans, assisting communities to revise and strengthen their relevant CIM plans in response to emerging climate risks and local vulnerabilities.

KEY PRIORITY AREA 10: RENEWABLE ENERGY TRANSITION



PC: Zheng Construction

Samoa's Renewable Energy Transition seeks to build a secure, affordable, low-carbon, and climate-resilient energy system that supports national development while reducing vulnerability to external shocks. This Key Priority Area recognises that reliable and sustainable energy is essential for economic growth, improved livelihoods, environmental protection, and long-term resilience. It focuses on accelerating the shift from imported fossil fuels to domestic renewable energy sources, while promoting efficient energy use across all sectors of the economy. Through coordinated investment, enabling policies, strengthened institutions, and public-private partnerships, Samoa aims to create an energy future that is cleaner, more self-sufficient, and responsive to the impacts of climate change.

Implementation under this priority will place greater emphasis on strengthening compliance with energy efficiency standards, enhancing monitoring and reporting systems, and ensuring that energy-efficient technologies remain accessible and suited to the needs of households and businesses. At the same time, continued oversight will sustain high standards in Health, Safety, Security and Environment (HSSE) compliance, particularly in the management of petroleum supply chains. These efforts will be reinforced through the coordinated actions and investments outlined in this priority area, supporting a more efficient, resilient, and sustainable energy system.

This KPA is aligned with the Vision and Mission of Samoa's Energy Sector Plan 2023/24 – 2027/28, the Sustainable Development Goals, particularly SDG 7 on Affordable and Clean Energy and SDG 13 on Climate Action, and supports Samoa's commitments under its Nationally Determined Contributions. It also reflects regional priorities under the 2050 Strategy for the Blue Pacific Continent, which emphasises energy security, resilience, and a transition to low carbon development pathways across Pacific Island countries. In recognising the cross-cutting nature of these commitments, climate resilience, gender equality, and digital transformation will be systematically integrated across all interventions to ensure that energy systems are adaptive to climate risks, inclusive in access and benefits, and supported by improved data, monitoring, and system efficiency.

Expected Outcome 10.1: Balanced Energy Mix



PC: Electric Power Corporation

This outcome prioritises the expansion of renewable energy generation alongside the increased uptake of energy efficiency practices as a critical foundation for Samoa's sustainable development. It integrates sustainability considerations into efforts to scale up investment in solar, hydro, wind, and biomass energy sources, while strengthening climate-resilient energy infrastructure and promoting efficient energy use across households, businesses, and the transport sector. These efforts support Samoa's goal of reducing dependence on imported fossil fuels, improving energy security, stabilising long-term energy costs, and lowering greenhouse gas

emissions. At the same time, the outcome aims to strengthen compliance with national energy efficiency standards, enhance monitoring and reporting systems, and increase awareness and adoption of energy-saving practices across all sectors.

Building on this, implementation of the Electric Power Corporation Energy Transition Master Plan 2024 – 2034 is progressing through a pipeline of strategic investments aimed at strengthening generation capacity and improving grid performance. Key initiatives include battery energy storage systems (BESS), solar-hybrid developments, hydro upgrades, off-grid electrification, and transmission network enhancements, supporting a more diversified and efficient energy mix while expanding access to modern energy services. Such initiatives include the Solar and BESS Projects in Salelologa and Fiaga. In parallel, Samoa is advancing innovative solutions to broaden its renewable energy base, including waste-to-energy initiatives developed through regional partnerships that contribute to renewable generation while promoting sustainable waste management practices.

At the same time, efforts under this outcome are driving the transformation of the Transport Sector through the promotion of sustainable and energy-efficient mobility solutions. Initiatives such as the Climate Action Pathways for Island Transport (CAP-IT) programme are supporting the adoption of fuel-efficient, hybrid, and electric vehicles, alongside the development of enabling infrastructure and supportive policy frameworks. Complementary measures include encouraging households and businesses to adopt renewable energy technologies and energy-efficient appliances, in support of a gradual shift away from diesel-based electricity supply.

These actions are reinforced by strengthened policy and regulatory settings to attract public and private sector investment, encourage innovation, and improve coordination across sectors. Through integrated efforts spanning environment, energy, and transport and infrastructure, Samoa will promote low-carbon development pathways, scale up green investment opportunities, and accelerate progress towards its national mitigation commitments. The Government continues to promote energy efficiency as a central pillar of this transition by lowering costs for households and businesses, reducing pressure on the national grid, and contributing to emissions reduction targets. Through education, targeted incentives, regulatory enforcement, and partnerships with the private sector, Samoa will foster a culture of efficient energy use. This supports economic resilience, environmental sustainability, and the achievement of its target of generating 70 per cent of energy from renewable sources by 2031.

KEY STRATEGIC OUTCOME 5 STRUCTURED PUBLIC WORKS AND SUSTAINABLE INFRASTRUCTURE

“Ua ōgatasi le lavelau ma le tu’ulau”



PC: Land Transport Authority



KEY PRIORITY AREA 11
PUBLIC INFRASTRUCTURE ASSET
MANAGEMENT

EXPECTED OUTCOMES

- RESPONSIVE PUBLIC UTILITY SERVICES
- RESILIENT PUBLIC INFRASTRUCTURE
- ENHANCED CONNECTIVITY & MOBILITY



KEY PRIORITY AREA 12
DIGITAL TRANSFORMATION &
INNOVATION

EXPECTED OUTCOMES:

- INCREASED DIGITAL INFRASTRUCTURE & TECHNOLOGY USE

KEY STRATEGIC OUTCOME 5: STRUCTURED PUBLIC WORKS AND SUSTAINABLE INFRASTRUCTURE

KEY POLICY INITIATIVES

- Re-introduction of an international aircraft for Samoa Airways.
- Establishment and operationalisation of the National Infrastructure Asset Management System.
- Ports developments (Upgrade of Asau Port)
- Airports developments (Upgrade of Asau and Maota airports)
- Implementation of Samoa's National E-Commerce Policy 2025 - 2030
- Establishment and operationalisation of the National Digital Identification (NDID) System

Structured Public Works and Sustainable Infrastructure encompasses two critical and interconnected priorities: Public Infrastructure Asset Management and Digital Transformation and Innovation.

The Government continues to strengthen public infrastructure asset management to ensure critical assets are resilient, sustainable, and responsive. Improvements will continue with essential utilities to be accessible to the whole of Samoa with limited interruptions, such as electricity, treated water and internet. A strengthened emphasis will be placed on asset management plans as an ongoing guide to be updated and implemented, as well as sustaining the enforcement of compliance with safety standards and safeguards for all major capital investments.

In addition, improvements include transport connectivity and mobility, with investments to upgrade national roads, ports infrastructure, and domestic airports in Upolu and Savaii. A key initiative is the investment towards re-introducing an International Aircraft for Samoa Airways – the national carrier.

Digital transformation and innovation continues to advance, positioning Samoa to adapt to the rapid global technological change and the growth of the digital economy. Samoa will build on its existing communications infrastructure for greater efficiency and cost effectiveness as well as additional solutions to strengthen long-term connectivity. Sustainable infrastructure, coupled with structured and secured delivery under digital transformation will facilitate the convenience with which service is delivered across all other sectors, especially Health and Education.

KEY PRIORITY AREA 11: PUBLIC INFRASTRUCTURE ASSET MANAGEMENT



PC: Samoa Water Authority

This Key Priority Area integrates cross-sectoral efforts to ensure that Samoa's public infrastructure remains responsive to community needs and is financially sustainable over the long term. It encompasses effective investment, sound asset management and consistent maintenance practices. The priority area also advances connectivity across transport systems to improve mobility, with a focus on accessibility and safety across land, sea and air transport.

The emphasis is on a strategic shift from expanding coverage, project-based monitoring, reactive maintenance and fragmented data systems to reliability and service performance, lifecycle asset management, preventative and periodic maintenance and climate-resilient infrastructure. This shift is informed by the development challenge of poor infrastructure and connectivity management, as well as the lessons learned from the implementation of PDS1. The review of PDS1 highlighted the urgent need for consolidated and integrated Transport and Infrastructure Sector efforts – ensuring the operational works of its various agencies are collectively reflected as effectively contributing to responsive, resilient and safe infrastructure.

Efforts under this Key Priority Area are aligned to Samoa's National Assets Management Policy Framework 2024, as well as to the 2050 Strategy for the Blue Pacific Continent through its Climate Change and Disasters and Technology and Connectivity thematic areas. At the global level, linkages can be made to Sustainable Development Goals 9, 11 and 13.

Expected Outcome 11.1: Responsive Public Utility Services



PC: Samoa Water Authority

Reliable access to essential utility services is fundamental to the wellbeing and productivity of Samoan households and businesses. This outcome addresses the critical need to reduce unplanned service disruptions, maintain consistent access to utilities and extend quality services to underserved areas. While near-universal access to treated water, electricity and internet services has largely been achieved, the focus now shifts to service stability, affordability and public confidence in the systems that support everyday livelihoods.

Samoa has achieved approximately 98 percent access to electricity nationwide, while access to safe water services remains high, though not yet universal. Despite these achievements, significant challenges persist in ensuring reliable and uninterrupted services. Frequent electricity and water outages, inconsistent service delivery and aging infrastructure continue to affect households, businesses and public services. These disruptions constrain productivity, increase operational costs and reduce community resilience, particularly in vulnerable and remote areas.

The Government is therefore committed to strengthening infrastructure resilience, improving maintenance systems and enhancing operational efficiency through continued funding for services improvement to the Electric Power Corporation and Samoa Water Authority. In parallel, the progressive expansion of safe and sustainable sanitation services is a key national priority, implemented through the cross-sectoral efforts of the Transport and Infrastructure and Water and Sanitation Sectors. Such efforts will prioritise the expansion of sanitation infrastructure and improving waste and wastewater management systems to safeguard public health, protect environmental resources and support sustainable urban and rural development.

Expected Outcome 11.2: Resilient Public Infrastructure



CBS Off-site Building

This outcome highlights the Government's commitment to strengthen the systematic planning, monitoring, maintenance, and safe management of public infrastructure across Samoa. The goal is to ensure that assets remain durable and cost-effective throughout their full life-cycle. This is especially important given the challenges posed by ageing infrastructure, historically limited maintenance investment, and the increasing frequency and intensity of weather events that place Samoa's built environment under growing pressure. The Government commits to acting on the lessons learned in PDS1, with a strengthened focus on asset management and infrastructure that is implemented according to approved engineering, resilience and applicable safety standards.

At the sector level, a key initiative is the establishment and full operationalisation of a National Infrastructure Asset Management System. Currently, infrastructure management is constrained by the absence of a consolidated national asset database, weak implementation and monitoring of the Samoa Infrastructure Asset Management (SIAM) framework and limited systematic asset revaluation processes. These gaps reduce the Government's ability to accurately assess infrastructure conditions, prioritise investments and plan maintenance requirements efficiently across sectors. Strengthening data systems and asset tracking mechanisms will therefore support more informed decision-making and better long-term infrastructure planning. This is complemented by efforts such as the development of master plans across key infrastructure sector agencies and the rehabilitation and upgrade of critical infrastructure to meet current and future demands.

The Government will also prioritise the institutionalisation of preventive and lifecycle-based maintenance approaches across all public infrastructure sectors. Historically, infrastructure maintenance has often been reactive, with repairs undertaken only after assets deteriorate or fail, resulting in increased long-term costs and service delivery disruption. Moving toward preventive and periodic maintenance practices will help preserve infrastructure quality and longevity, improve operational reliability and ensure more efficient use of public resources over time.

Given Samoa's high exposure to cyclones, flooding, coastal erosion and other climate-related hazards, resilience considerations must be fully embedded into infrastructure planning, design, construction and maintenance processes. This includes strengthening compliance with national safety standards, integrating climate-resilient engineering practices and ensuring that infrastructure investments contribute to safer and more sustainable communities.

Expected Outcome 11.3: Enhanced Connectivity and Mobility



PC: Samoa Airways

This outcome aims to improve the accessibility, reliability and safety of Samoa's transport networks, both domestically and internationally. Enhancing land, sea and air connectivity is fundamental to the efficient movement of people, goods, and services. It underpins economic growth, regional interaction, trade facilitation and strengthens Samoa's participation in the global economy.

The Government remains committed to the development of safe, reliable and climate-resilient road infrastructure, as the primary mode of transportation throughout Samoa. The increasing vulnerability of transport infrastructure – particularly the national road network – to climate-related hazards, necessitates the strengthening of road resilience through improved design standards, maintenance and climate-adaptive infrastructure investments.

This outcome also prioritises strengthening dependable maritime and aviation connectivity to improve both domestic and international access. Upgrading port infrastructure and expanding opportunities for safe and efficient inter-island travel as well as shipping and cargo services, will support stronger domestic connectivity and economic integration, with targeted investments towards the upgrade of the Asau Port.

In the aviation sector, the Government remains committed to reviving a national carrier to restore and expand international air routes, reconnecting Samoa to key regional and global destinations. Reliable aviation services are essential for tourism development, trade, investment and maintaining strong social and economic ties with international partners and the Samoan diaspora. This will be complemented by dedicated investments to upgrade domestic airport infrastructure including the Asau and Maota airports.

Overall, this outcome seeks to deliver an integrated, safe and resilient transport system that improves mobility, supports economic opportunity and strengthens Samoa's connectivity at local, regional and international levels.

KEY PRIORITY AREA 12: DIGITAL TRANSFORMATION AND INNOVATION



PC: Samoa Pocket Guide

The Government is committed to Samoa's digital transformation by expanding access to reliable, inclusive digital infrastructure while strengthening cybersecurity and data management systems. The focus is on enabling the effective use of digital technologies across Government, businesses and communities to improve service delivery, increase operational efficiency and foster innovation. By ensuring that Samoa's digital systems are secure and resilient, this priority area supports sustainable economic growth, improved livelihoods, and safe and confident participation in the digital economy.

This Key Priority Area has strong cross-cutting significance, supporting improvements across Government, business and social sectors. Digital systems enhance transparency and efficiency in public services, enable businesses to expand through e-commerce and digital payments and also enable more efficient delivery in health, education and financial services.

The Information and Communications and Technology (ICT) Sector has made notable progress in improving internet access, strengthening cybersecurity and expanding digital services. However, key development challenges remain, including the high cost of connectivity, limited digital infrastructure particularly in rural areas, and gaps in digital skills and literacy. The Government recognises that these challenges can be addressed through targeted investment in reliable and affordable digital infrastructure, strengthened digital capacity building as well as the effective implementation of relevant policies and strategies. This approach will ensure the efficient and secure use of ICT, while maintaining alignment with Samoa's national development framework, as well as regional priorities under the 2050 Strategy for the Blue Pacific Continent (Thematic Area 7: Technology and Connectivity) and global commitments reflected in Sustainable Development Goals 11: Sustainable Cities and Communities.

Expected Outcome 12.1: Increased Digital Infrastructure and Technology Use

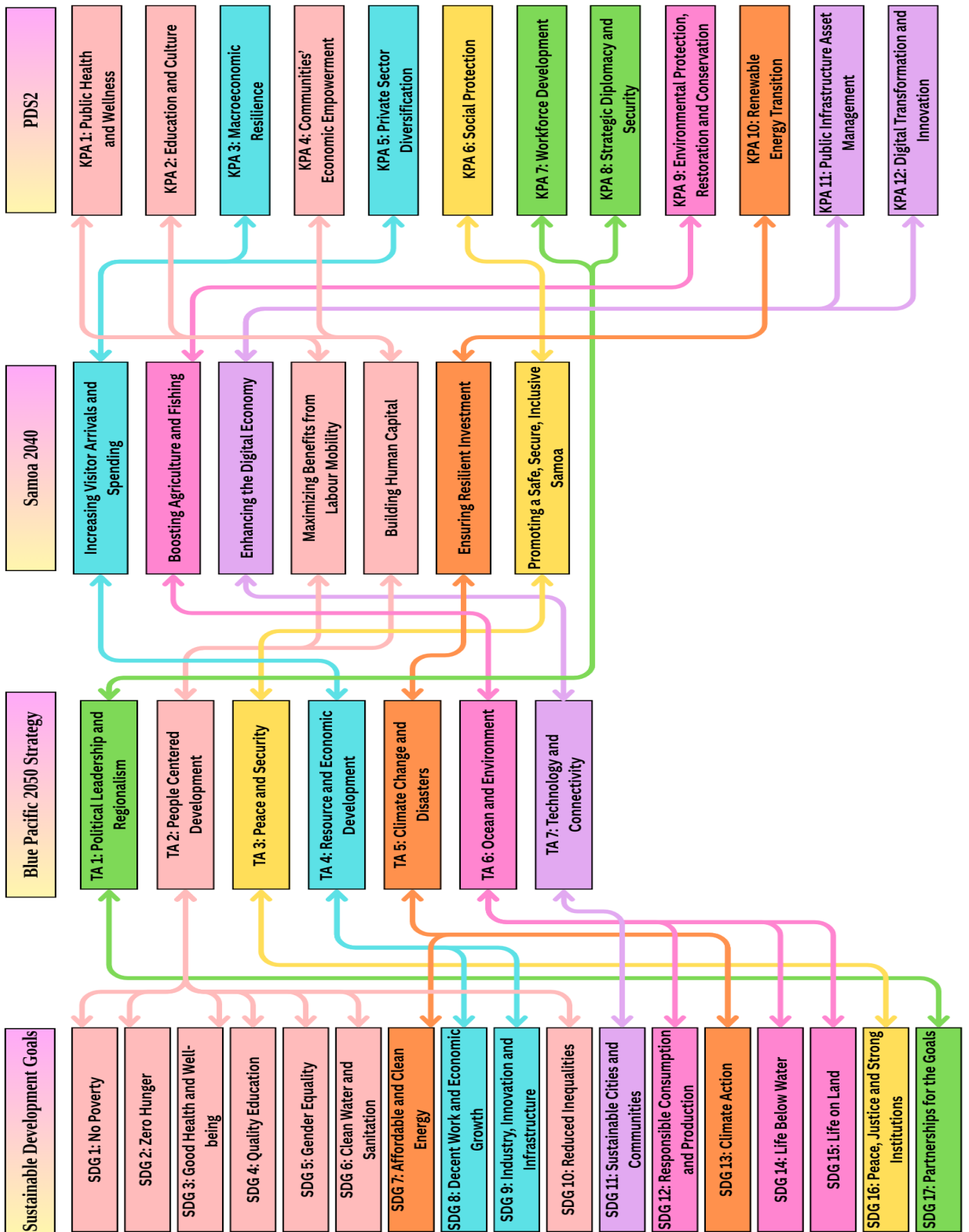


This outcome focuses on expanding access to reliable and affordable digital tools and services so that communities, businesses, and individuals across Samoa can connect to opportunities in education, healthcare, e-commerce and beyond. Strengthening digital literacy initiatives, supporting small and medium enterprises in adopting e-commerce and digital payment systems, and promoting an enabling environment for digital entrepreneurship will help increase participation in the digital economy.

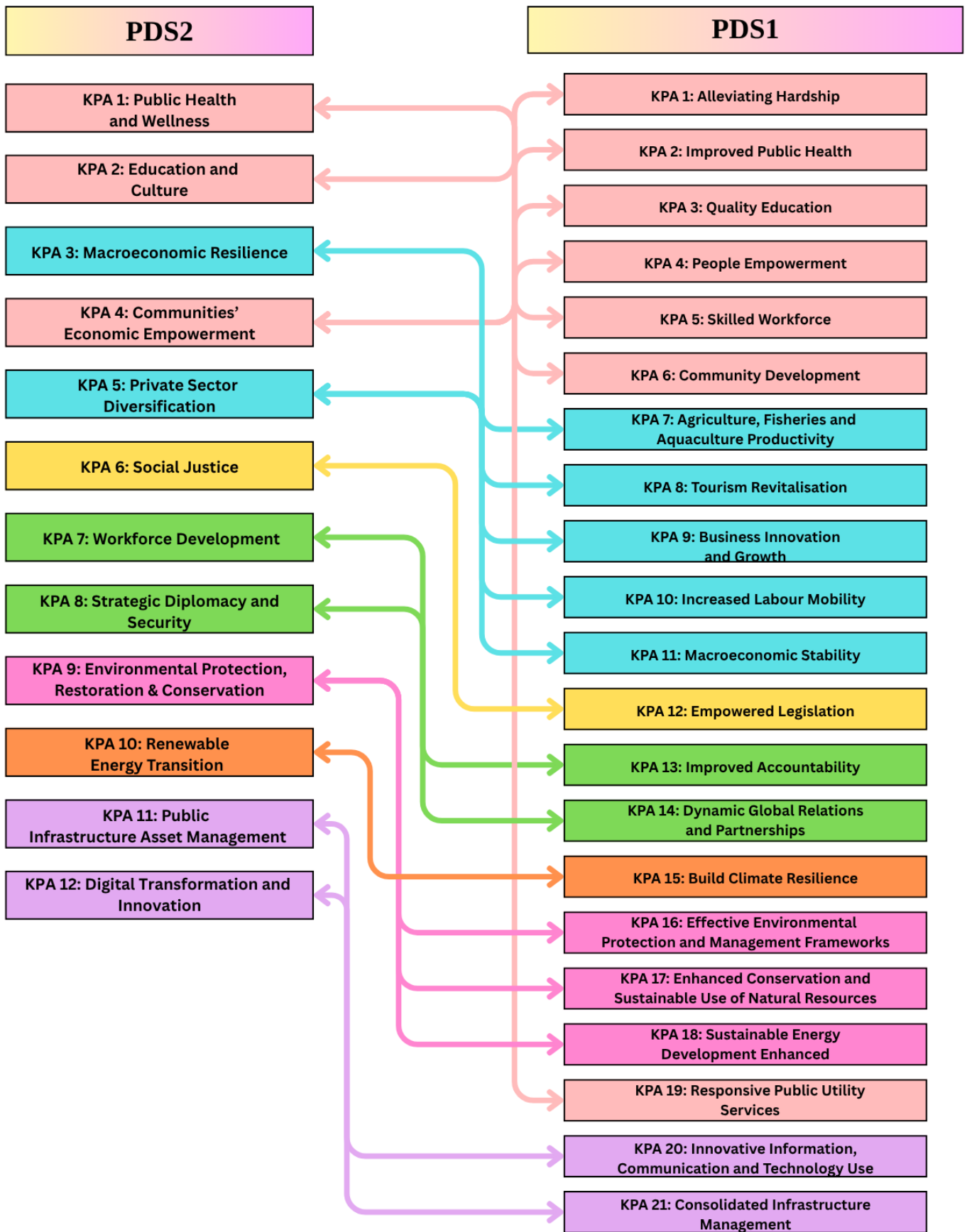
Improving digital access is a key driver of inclusive and sustainable economic growth, and this outcome places particular emphasis on leveraging information and communications technology (ICT) to enhance efficiency and service delivery across key sectors. This will be achieved through the targeted upgrading and modernisation of ICT infrastructure and systems, such as investing in submarine cables and satellite technology to significantly increase internet speed, improve reliable connectivity, enhance network resilience and extend connectivity to remote and underserved areas, ensuring Samoa keeps pace with the demands of a rapidly evolving digital landscape. The target is for diversified connectivity solutions to build resilience, expand capacity, and support Samoa's digital growth

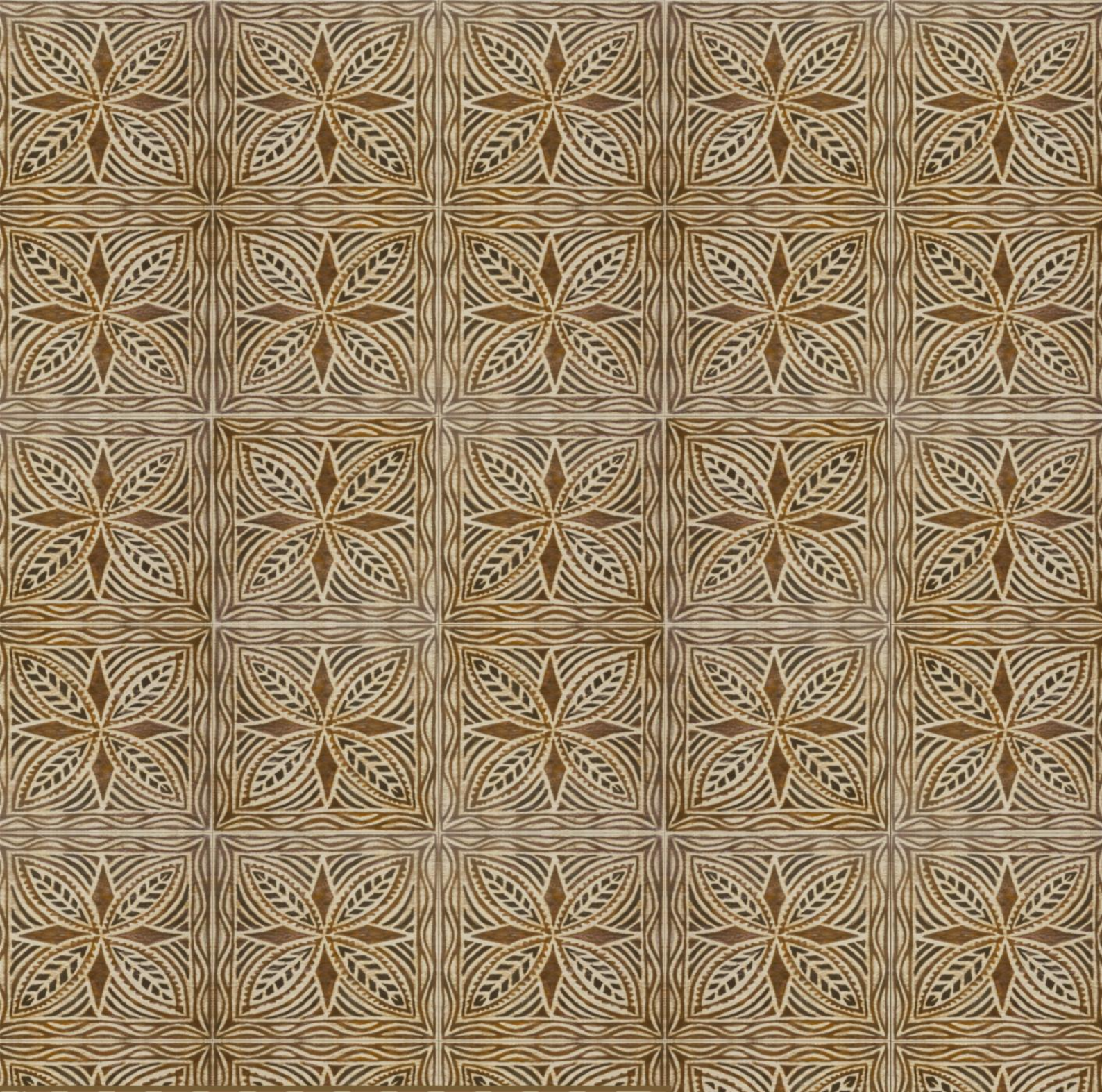
The Government remains committed to advancing the efficiency with which it provides its services, as highlighted in the aim to increase the availability of these services through online platforms. The National Digital Identification (NDID) system will be a major initiative to be established and implemented within this planning cycle – facilitating equitable and streamlined access to key services for the people of Samoa.

MAPPING (PDS2 – SAMOA 2040 – 2050 STRATEGY – SDGs)



MAPPING (PDS1 – PDS2)





+685 34333



information@mof.gov.ws



www.mof.gov.ws

