

SYMBOL	DESCRIPTION
<b>SECURITY DEVICES</b>	
	ACCESS CONTROL DOOR (ONE DIRECTION & BOTH DIRECTIONS) XX = TYPE (TYPE CADE CAN BE ANY DEVICE LISTED) i.e. CR = CARD READER CP = CARD READER WITH INTEGRAL PIN PAD
	ALARM SET BUTTON
	BIOMETRIC DATA POINT FOR IRIS SCAN/FINGERPRINT
	EMERGENCY EGRESS BREAK GLASS PANEL (EBG)
	CARD READER
	CARD READER - BIOMETRIC
	CARD READER - WITH INTEGRAL PIN PAD
	CARD READER - LOCKER
	CARD READER - OFFLINE
	CARD READER - WIRELESS
	CARD READER - ENROLMENT
	DURESS PUSHBUTTON
	ELECTRIC FENCE ENERGISER
	HEAVY DOOR MONITOR
	HOLD OPEN
	INTERLOCK BETWEEN DOORS
	SEPARATE KEY OVERRIDE TO ELECTRICALLY RELEASE LOCK
	KEY PAD
	LOCK STATUS MONITOR
	LOCK SIGNAL
	DOOR MONITOR (REED SWITCH)
	REMOTE RELEASE
	RADIO TRANSMITTER/RECEIVER
	REQUEST TO EXIT DEVICE (REX)
	U-BOX
	DOOR LOCK & DOUBLE DOOR LOCK X = TYPE i.e. B = BOLT C = COBALT E = ELECTROMAGNETIC H = HOOK M = MORTICE S = STRIKE V = V-LOCK
	Y = REFERENCE, REFER SCHEDULE
	REMOTE ARMING TERMINAL (BUILDING INTRUDER DETECTION SYSTEM)
	INFRA-RED POINT-TO-POINT DETECTION BEAM ARRAY TX = TRANSMITTER, RX = RECEIVER, XX = MIN DISTANCE
	INDICATES SPECIFIC LOCATION OF DEVICE
	INTERCOM STATION XX = TYPE i.e. A = AUDIO ONLY AC = AUDIO & CAMERA AM = AUDIO & MONITOR
	MASTER INTERCOM STATION XX = TYPE i.e. A = AUDIO ONLY AC = AUDIO & CAMERA AM = AUDIO & MONITOR
	VISUAL ALERTING DEVICE - CEILING MOUNTED
	VISUAL ALERTING DEVICE - WALL MOUNTED
	ABOVE DOOR LIGHT - CEILING MOUNTED
	ABOVE DOOR LIGHT - WALL MOUNTED
	SPEAKER - CEILING MOUNTED
	SPEAKER -WALL MOUNTED
	SPEAKER - DIRECTIONAL
	SOUNDER
	CCTV CAMERA c/w HOUSING & MOUNTING BRACKET
	CCTV CAMERA, HI SPEED, PAN, TILT & ZOOM c/w HOUSING & MOUNTING BRACKET
	360° CCTV CAMERA c/w HOUSING & MOUNTING BRACKET

SYMBOL	DESCRIPTION
<b>SECURITY DEVICES</b>	
	PASSIVE INFRA-RED SENSOR - 360° BEAM DETECTION
	PASSIVE INFRA-RED SENSOR - 90° BEAM DETECTION
	PASSIVE INFRA-RED SENSOR - 60° BEAM DETECTION
	PASSIVE INFRA-RED SENSOR - 45° BEAM DETECTION
	PASSIVE INFRA-RED SENSOR - DIRECT BEAM DETECTION
	MOTORISED ROLLER GRILLE (MOTOR CONTROLS BY OTHERS) INTERFACE GRILLE MONITORING AND ACCESS CONTROL BY SECURITY TRADE)
	TRAFFIC ROAD BARRIER
	GROUND LOOP
	TRAFFIC LIGHT
	KEY SWITCH (INCLUDING UP, DOWN, AUTO POSITIONS FOR LOCAL OVERRIDE OF ROLLER DOOR GRILLE)
	CAR COMING ILLUMINATED SIGN
	CARPARK PEDESTAL X = TYPE i.e. CP = CARD READER WITH INTEGRAL PIN PAD DB = SPACE ALLOCATION FOR DIRECTORY BOARD VP = VIDEO INTERCOM CALL STATION WITH NUMERIC SELECTION KEY PAD
	SECURITY PANEL XXX = PANEL REFERENCE i.e. SEC = SECURITY PANEL FCP = FIELD CONTROLLER PANEL LIFT = LIFT INTERFACE RDI = ROLLER DOOR INTERFACE
	SERVER - STANDALONE TOWER & RACK XXX = SERVER REFERENCE
	PATCH PANEL XXX = PANEL REFERENCE
	PATCH PANEL (SCHEMATICS) XXX = PANEL REFERENCE
	NETWORK SWITCH XXX = SWITCH REFERENCE
	MONITOR XXX = TYPE, WWW = SIZE i.e. DISP = DISPLAY LCD = FLAT SCREEN LCD LED = FLAT SCREEN LED TOUCH = TOUCH SCREEN
	CCTV MONITOR, WWW = SIZE
<b>CABLE CONTAINMENT</b>	
	TRUNKING e.g. 2 COMPARTMENT, CAT 6 2C = 2 COMPARTMENT, 3C = 3 COMPARTMENT CAT 5, CAT 6 CABLE DUCT / CONDUIT e.g. 100 DIA POWER P = POWER, C = COMMS, S = SECURITY
	CABLE HOLE THROUGH SLAB
	CABLE LADDER e.g. 300 WIDE POWER P = POWER, C = COMMS, S = SECURITY
	CABLE TRAY e.g. 300 WIDE POWER P = POWER, C = COMMS, S = SECURITY
	CABLE BASKET e.g. 300 WIDE POWER P = POWER, C = COMMS, S = SECURITY
	CABLE TRAY / LADDER / BASKET RISER/DROPPER e.g. 300 WIDE COMMS P = POWER, C = COMMS, S = SECURITY
	FLOOR BOX
	SERVICES DROP POINT XXX = TYPE i.e. 2C = 2 COMPARTMENT 3C = 3 COMPARTMENT SW = SPIRAL WRAP (NOTE: NO TYPE SHOWN FOR SINGLE COMPARTMENT)

ABBREVIATION	DESCRIPTION
(2000)	HEIGHT AFFL eg: 2000mm
AFFL	ABOVE FINISHED FLOOR LEVEL

CAMERA VIEW ARC	

B	DETAILED DESIGN	REM	KJR	ALS	17.05.24
A	CONCEPT DESIGN	REM	KJR	ALS	03.08.22
No.	Revision	By	Chk	Appd	Date

Drawing Originator:

Original Scale (A1)	Design	KJR	28.07.22	Approved For Construction*
Reduced Scale (A3)	Drawn	REM	28.07.22	Date
NTS	Dwg Verifier			
	Dwg Check			
	* Refer to Revision 1 for Original Signature			

Client:

SAMOA PORTS AUTHORITY

Project: ENHANCING SAFETY, SECURITY AND SUSTAINABILITY OF APIA PORT CIVIL WORKS

Title: LEGEND


ORIGINAL DRAWING  
IN COLOUR

DETAILED DESIGN  
NOT FOR CONSTRUCTION

Discipline	SECURITY SERVICES
Drawing No.	6060471-BS-001
Rev.	B

CAMERA (TYPE/NUMBER)	LOCATION	TYPE	MOUNTING	MIN. IP 66 RATED ENCLOSURE	MIN. IK 10 RATED ENCLOSURE	IR ILLUMINATOR BUILT IN	HORIZONTAL FOV	VERTICAL FOV	MIN ILLUMINATION - COLOUR	MIN ILLUMINATION - B&W	ANALYTICS	REMOTE	MAKE & MODEL (OR APPROVED EQUIVALENT)	RESOLUTION	COMMENTS
C3.01	Gatehouse Front Overview	PANORAMIC - MULTISENSOR	Soffit	✓	✓		180	90	0.15 LUX	0.05 LUX	Refer Specification	Focus	Axis P3827-PVE	7MP	Approx. mounting height of soffit 2.4m AGL
C1.02	Gatehouse Entry Lane	DOME	Soffit	✓	✓	✓	113	58	0.03 LUX	0.003 LUX	Refer Specification	PTRZ	Hanwha XNV-8083Z	6MP	Approx. mounting height of soffit 2.4m AGL
C2.03	Gatehouse Rear Overview	DOME	Soffit	✓	✓	✓	113	60	0.03 LUX	0.003 LUX	Refer Specification	PTRZ	Hanwha XNV-9083RZ	8MP	Approx. mounting height of soffit 2.4m AGL
C1.04	Gatehouse Exit Lane	DOME	Soffit	✓	✓	✓	113	58	0.03 LUX	0.003 LUX	Refer Specification	PTRZ	Hanwha XNV-8083Z	6MP	Approx. mounting height of soffit 2.4m AGL
C1.05	Gatehouse Front Service Window	DOME	Soffit	✓	✓	✓	113	58	0.03 LUX	0.003 LUX	Refer Specification	PTRZ	Hanwha XNV-8083Z	6MP	Approx. mounting height of soffit 2.4m AGL
C4.06	Shed 1 South East	PANORAMIC - MULTIDIRECTION	Corner	✓	✓	✓	87	64	0.11 LUX	0.01 LUX	Refer Specification	PTRZ	Hanwha PNM-9085RQZ	4x5MP	Mount directly beneath roof line. Approx. 6m
C2.07	X-Ray Interior	DOME	Drop Pole	✓	✓	✓	113	60	0.03 LUX	0.003 LUX	Refer Specification	PTRZ	Hanwha XNV-9083RZ	8MP	Lowest point to be no lower than top of door. Approx 6.2m
C4.08	Shed 1 North East	PANORAMIC - MULTIDIRECTION	Corner	✓	✓	✓	87	64	0.11 LUX	0.01 LUX	Refer Specification	PTRZ	Hanwha PNM-9085RQZ	4x5MP	Mount directly beneath roof line. Approx. 6m
C4.09	Shed 1 North West	PANORAMIC - MULTIDIRECTION	Pole	✓	✓	✓	87	64	0.11 LUX	0.01 LUX	Refer Specification	PTRZ	Hanwha PNM-9085RQZ	4x5MP	Mount directly under radio equipment. Approx. 12m
C4.10	Shed 2 South East	PANORAMIC - MULTIDIRECTION	Corner	✓	✓	✓	87	64	0.11 LUX	0.01 LUX	Refer Specification	PTRZ	Hanwha PNM-9085RQZ	4x5MP	Mount directly beneath roof line. Approx. 6m
C4.11	Shed 2 South West	PANORAMIC - MULTIDIRECTION	Corner	✓	✓	✓	87	64	0.11 LUX	0.01 LUX	Refer Specification	PTRZ	Hanwha PNM-9085RQZ	4x5MP	Mount directly beneath roof line. Approx. 6m
C3.12	Substation East	PANORAMIC - MULTISENSOR	Wall	✓	✓	☒	180	90	0.15 LUX	0.05 LUX	Refer Specification	Focus	Axis P3827-PVE	7MP	Mount directly beneath roof line. Approx. 2.2m
C4.13	Cable Warehouse South East	PANORAMIC - MULTIDIRECTION	Corner	✓	✓	✓	87	64	0.11 LUX	0.01 LUX	Refer Specification	PTRZ	Hanwha PNM-9085RQZ	4x5MP	Mount directly beneath roof line. Approx. 10m
C2.14	Cable Warehouse South 1	DOME	Wall	✓	✓	✓	113	60	0.03 LUX	0.003 LUX	Refer Specification	PTRZ	Hanwha XNV-9083RZ	8MP	Mount directly beneath roof line. Approx. 10m
C2.15	Cable Warehouse South 2	DOME	Wall	✓	✓	✓	113	60	0.03 LUX	0.003 LUX	Refer Specification	PTRZ	Hanwha XNV-9083RZ	8MP	Mount directly beneath roof line. Approx. 10m
C3.16	Cable Warehouse South West	PANORAMIC - MULTISENSOR	Wall	✓	✓	☒	180	90	0.15 LUX	0.05 LUX	Refer Specification	Focus	Axis P3827-PVE	7MP	Mount directly beneath roof line. Approx. 10m
C3.17	Cable Warehouse West	PANORAMIC - MULTISENSOR	Wall	✓	✓	☒	180	90	0.15 LUX	0.05 LUX	Refer Specification	Focus	Axis P3827-PVE	7MP	Mount directly beneath roof line. Approx. 10m
C2.18	Control Tower East	DOME	Corner	✓	✓	✓	113	60	0.03 LUX	0.003 LUX	Refer Specification	PTRZ	Hanwha XNV-9083RZ	8MP	Mount aligned with top of windows. Approx. 2.3m above platform.
C2.19	Control Tower West	DOME	Corner	✓	✓	✓	113	60	0.03 LUX	0.003 LUX	Refer Specification	PTRZ	Hanwha XNV-9083RZ	8MP	Mount aligned with top of windows. Approx. 2.3m above platform.
C5.20	Lighting Pole 12	PTZ	Pole	✓	✓	✓	n/a	n/a	0.1 LUX	0.01 LUX	Refer Specification	PTZ	Hanwha XNP-9300RW	8MP	Mount at 14m above ground level.

B	DETAILED DESIGN	REM	KJR	ALS	17.05.24
A	CONCEPT DESIGN	REM	KJR	ALS	03.08.22
No.	Revision	By	Chk	Appd	Date

Drawing Originator:		Original Scale (A1) NTS	Design	KJR	28.07.22	Approved For Construction*
		Reduced Scale (A3) NTS	Drawn	REM	28.07.22	
			Dwg Verifier			
			Dwg Check			
			* Refer to Revision 1 for Original Signature			Date

Client:	 SAMOA PORTS AUTHORITY
---------	---

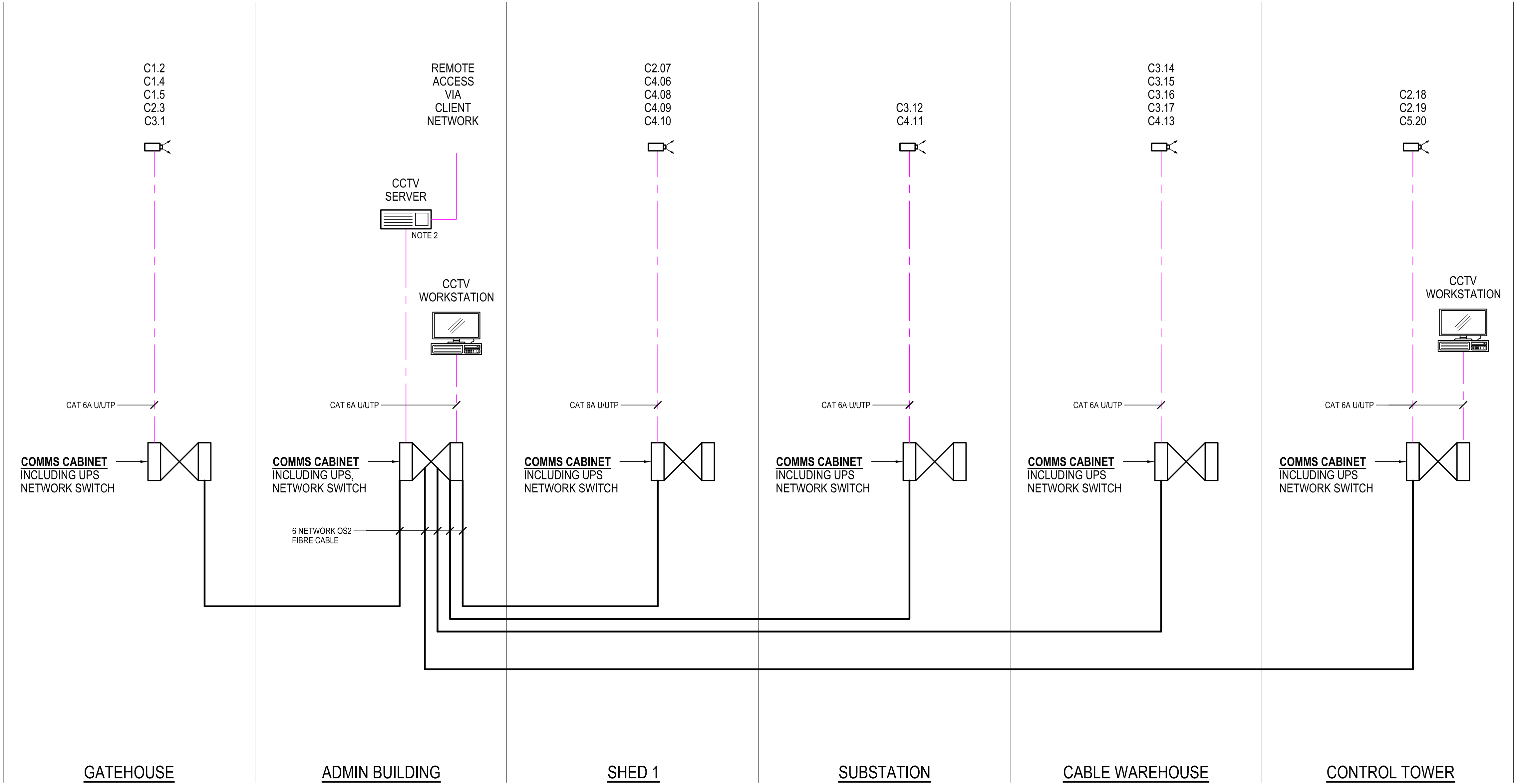
Project:	ENHANCING SAFETY, SECURITY AND SUSTAINABILITY OF APIA PORT CIVIL WORKS
----------	--

Title:	CAMERA SCHEDULE	Discipline	SECURITY SERVICES	
		Drawing No.	6060471-BS-002	Rev.





- NOTES:
1. SCHEMATIC PORTRAYS THE DESIGN INTENT FOR MAJOR EQUIPMENT ITEMS ONLY. PROVIDE ALL ITEMS REQUIRED FOR A FULLY FUNCTIONING SYSTEM.
  2. CCTV SERVER NETWORK ADAPTOR 1: CAMERA NETWORK  
NETWORK ADAPTOR 2: CLIENT NETWORK



ORIGINAL DRAWING  
IN COLOUR

DETAILED DESIGN  
NOT FOR CONSTRUCTION

No.	Revision	By	Crk	Appd	Date
B	DETAILED DESIGN	REM	KJR	ALS	17.05.24
A	CONCEPT DESIGN	REM	KJR	ALS	03.08.22

Drawing Originator:  
**Beca**

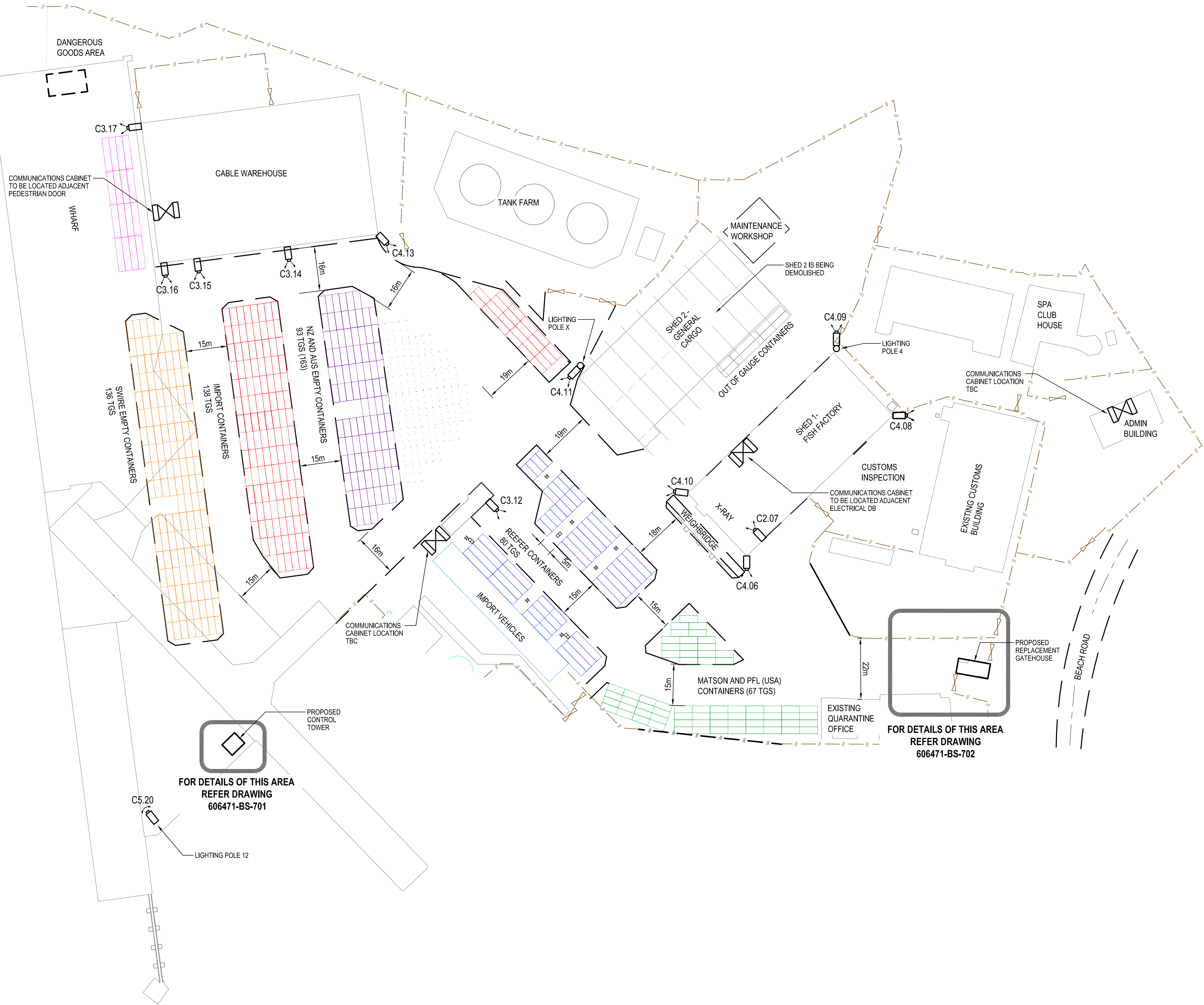
Original Scale (A1) NTS	Design Drawn	KJR	28.07.22	Approved For Construction*
Reduced Scale (A3) NTS	Design Verifier	REM	28.07.22	Date
	Dwg Check			
	* Refer to Revision 1 for Original Signature			

Client:  
 SAMOA PORTS AUTHORITY

Project: ENHANCING SAFETY, SECURITY AND SUSTAINABILITY OF APIA PORT CIVIL WORKS

Title: CCTV SCHEMATIC

Discipline	SECURITY SERVICES
Drawing No.	6060471-BS-011
Rev.	B



B	DETAILED DESIGN	REM	KJR	ALS	17.05.24
A	CONCEPT DESIGN	REM	KJR	ALS	03.08.22
No.	Revision	By	Chk	Appd	Date



Original Scale (A1)	Design	KJR	22.01.24	Approved For Construction*
1:750	Drawn	REM	22.01.24	Date
Reduced Scale (A3)	Design Checker			
1:1500	Draw Check			
	* Refer to Revision 1 for Original Signature			



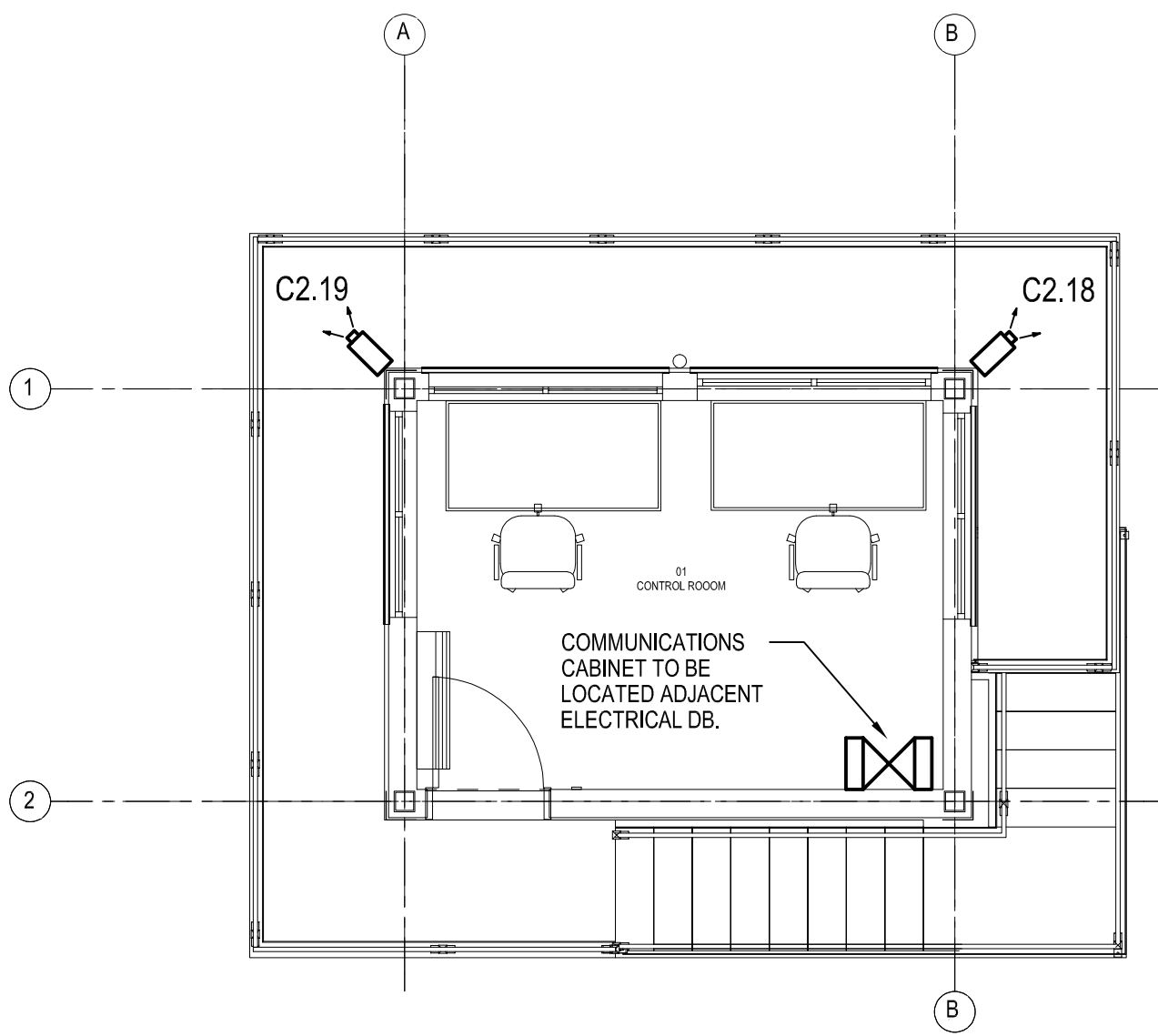
SAMOA PORTS AUTHORITY

Project: ENHANCING SAFETY, SECURITY AND SUSTAINABILITY OF APIA PORT CIVIL WORKS

Title: SITE PLAN  
SECURITY LAYOUT

DETAILED DESIGN  
NOT FOR CONSTRUCTION

Discipline	SECURITY SERVICES
Drawing No.	6060471-BS-101
Rev.	B



ORIGINAL DRAWING  
IN COLOUR

DETAILED DESIGN  
NOT FOR CONSTRUCTION

B	DETAILED DESIGN	REM	KJR	ALS	17.05.24
A	CONCEPT DESIGN	REM	KJR	ALS	03.08.22
No.	Revision	By	Chk	Appd	Date



Original Scale (A1)	Design	KJR	22.01.24	Approved For Construction*
1:50	Drawn	REM	22.01.24	
Reduced Scale (A3)	Design Verifier			Date
1:100	Dwg Check			
	* Refer to Revision 1 for Original Signature			

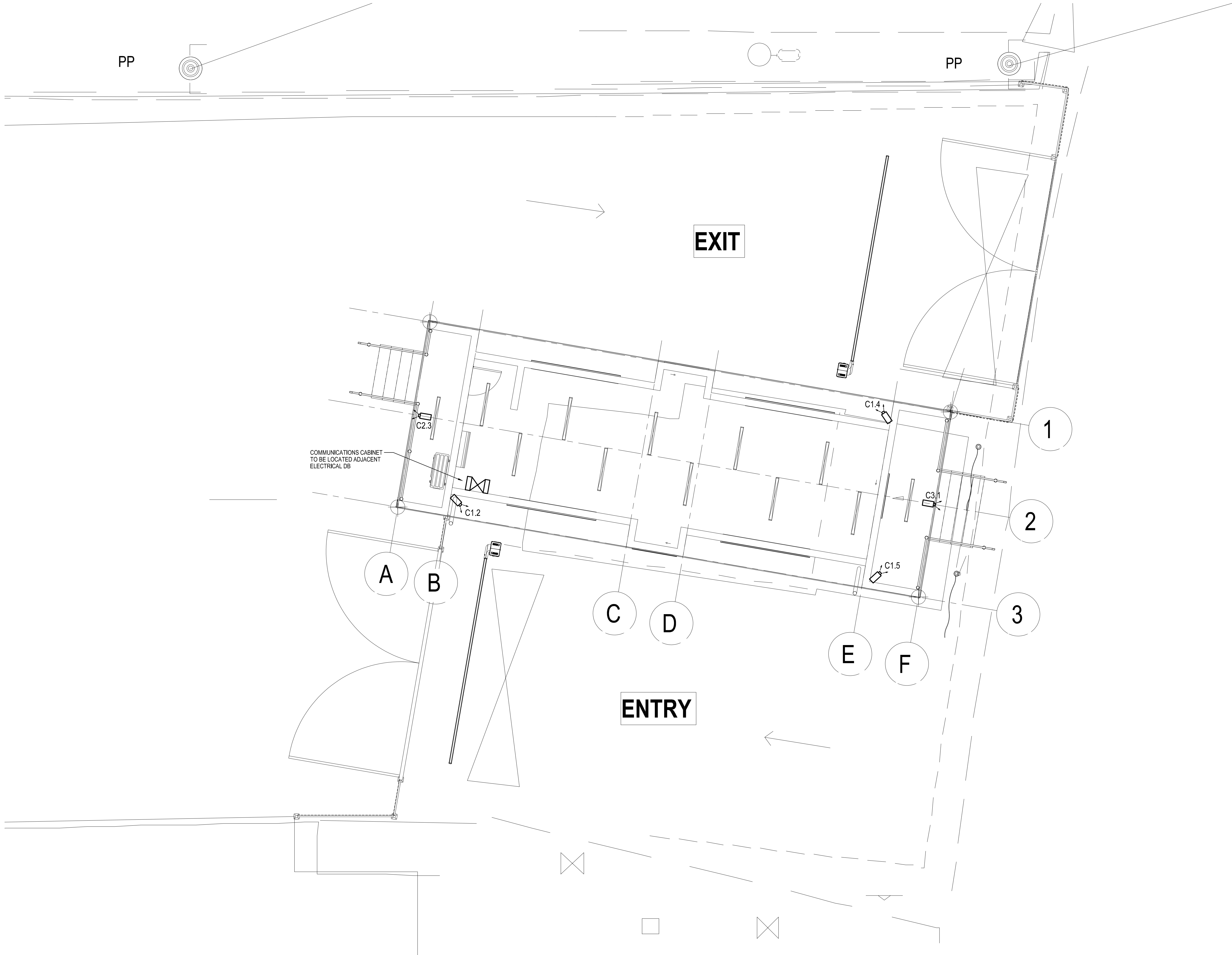


Project: ENHANCING SAFETY, SECURITY AND SUSTAINABILITY OF APIA PORT CIVIL WORKS

Title: CONTROL TOWER SECURITY LAYOUT

Discipline	SECURITY SERVICES
Drawing No.	6060471-BS-701
Rev.	B





No.	Revision	By	Chk	Appd	Date
B	DETAILED DESIGN	REM	KJR	ALS	17.05.24
A	CONCEPT DESIGN	REM	KJR	ALS	03.08.22

Drawing Originator:  
**Beca**

Original Scale (A1)	Design	KJR	22.01.24	Approved For Construction*
1:50	Drawn	REM	22.01.24	Date
Reduced Scale (A3)	Design Checker			
1:100	Draw Check			

\* Refer to Revision 1 for Original Signature

Client:  
**SAMOA PORTS AUTHORITY**

Project:  
**ENHANCING SAFETY, SECURITY AND SUSTAINABILITY OF APIA PORT CIVIL WORKS**

Title:  
**GATEHOUSE SECURITY LAYOUT**

**DETAILED DESIGN**  
**NOT FOR CONSTRUCTION**

Discipline	SECURITY SERVICES
Drawing No.	6060471-BS-702
Rev.	B