



About **Lahleni View**

The new and upcoming Lahleni View development includes approximately 20 000m² retail space anchored by Checkers Hyper that will be situated in Witbank, officially Emalahleni, a city situated on the Highveld of Mpumalanga which is known for its coal mining industry.

Lahleni View will be located along Mandela Street, adjacent to the newly built Makro, easily accessible to residential areas, guest houses and schools including Laerskool Klipfontein, Witbank High School, Robert Carruthers School, and Ed-U-College Combined School.

The architectural inspiration for the development derives from the word “Emalahleni” which originates from the Zulu language. Therefore translates to “Place of Ashes” or “Place of Coals” in Zulu which is the inspiration for the architectural language that will be conveyed throughout this development.





Fact Sheet



Current GLA: ±20 000m²

Number of tenants: 42

Anchors: Checkers Hyper

Trading hours:

Monday - Thursday: 9am - 6pm

Friday: 9am - 7pm

Saturday, Sunday and Public

Holidays: 9am - 5pm

Managed by:

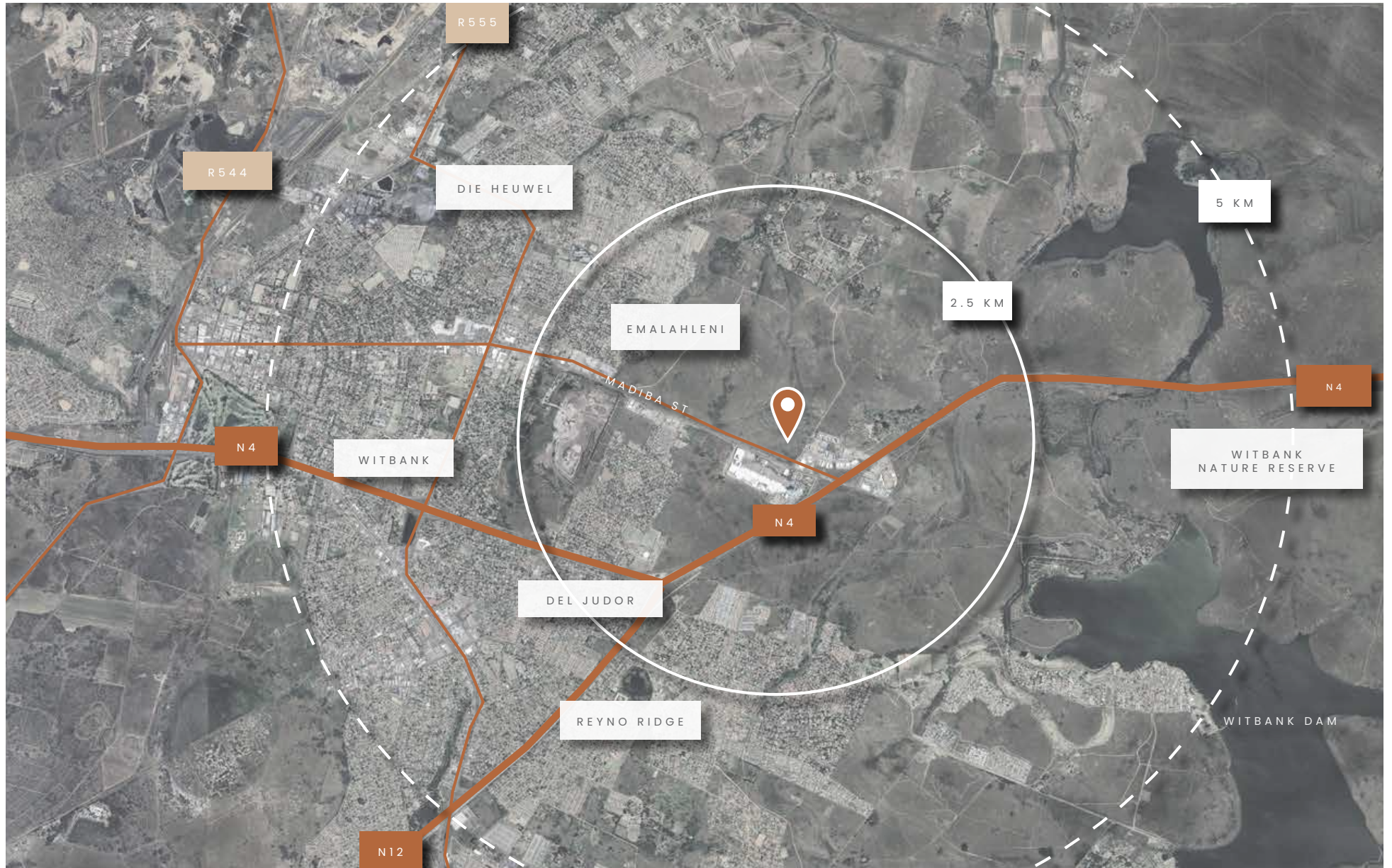
Broll

Parking Bays:

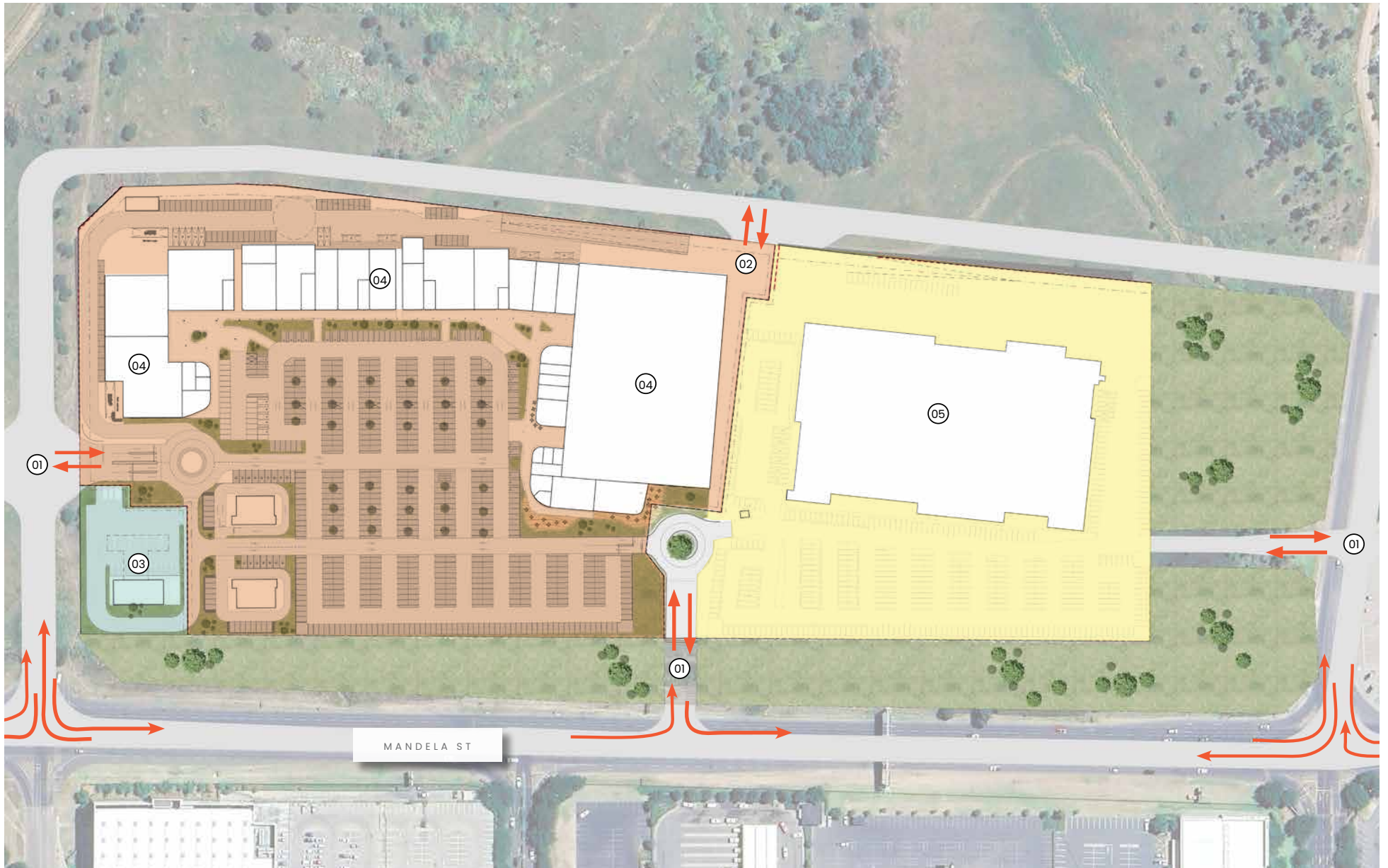
±820

Location:

Emalaheni, Mpumalanga







Site Master Plan





JOHANNESBURG

Tel: +27 10 020 1810

Email: info@retailafrica.co.za

Web: www.retailafrica.co.za

1 Melrose Square, Amdec House,
Office 303, Melrose Arch, 2076,

P O Box 877, Melrose Arch, 2076

